



Rapid Response



Special Edition: Brazilian Fires

September 2019

Based on fire alerts in August 2019

Prepared with

aidenvironment

Waxman

Introduction

This report links 12 cases of detected fires in the Amazon and Cerrado biomes in Brazil in August 2019 with details of ownership and supply chain linkages. These cases were part of previous Rapid Response reports on deforestation between April and July 2019. Fire events included in this report are based on data from NASA and were visually confirmed. These images suggest that the farms that were cleared between March and June 2019 are now being prepared for pasture or crop production, illustrating how man-made fires are a key piece of land conversion in Brazil. Our report confirms that soy traders and cattle processors with zero-deforestation commitments purchase from farms that are not only clearly engaging in deforestation and land conversion, but also that had fire outbreaks last month.

Summary of Cases

No	Biome	Municipality, State	Farm name	Deforestation (ha)	Report ¹	Page
1	Amazon	São Félix do Xingu, Pará	Fazenda Lagoa do Triunfo IV	436	5	3
2	Amazon	Novo Progresso, Pará	PDS Vale do Jamanxim and Floresta Nacional do Jamanxim	3,932	3	4
3	Amazon	Nova Maringá, Mato Grosso	Fazenda Pontal I e II	796	5	5
4	Amazon	Feliz Natal, Mato Grosso	Fazenda Mirandópolis / Fazenda Vó Constância	324	2	6
5	Cerrado	Correntina, Bahia	Fazenda Tapera Grande	834	2	7
6	Cerrado	Formosa do Rio Preto, Bahia	Fazenda São José - Parcela 10	1,611	3	8
7	Cerrado	Formosa do Rio Preto, Bahia	Fazenda Agropecuária Albuquerque	837	3	9
8	Cerrado	Luís Eduardo Magalhães, Bahia	Fazenda Bananal IX	1,155	4	10
9	Cerrado	Uruçuí, Piauí	Agropecuária Cimpar / Fazenda Rio Verde / Fazenda Alto Garças / Fazenda Palmeira das Missões / Fazenda Indianópolis / Fazenda Palmeira das Missões / Fazenda Indianópolis / Fazenda Rio Verde	1,787	4	11
10	Cerrado	Cocalinho, Mato Grosso	Fazenda Forquilha	1,717	5	12
11	Cerrado	Nova Nazaré, Mato Grosso	Fazenda Sol Nascente	793	4	13
12	Cerrado	Balsas, Maranhão	Fazenda Nebraska	954	2	14
Total				11,439	-	

¹ <http://www.mightyearth.org/rapid-response-soy-cattle>

1. Fazenda Lagoa do Triunfo IV (São Félix do Xingu, Pará) – Amazon

June 2019



Imagery © 2019 Planet Labs Inc.

June 2019



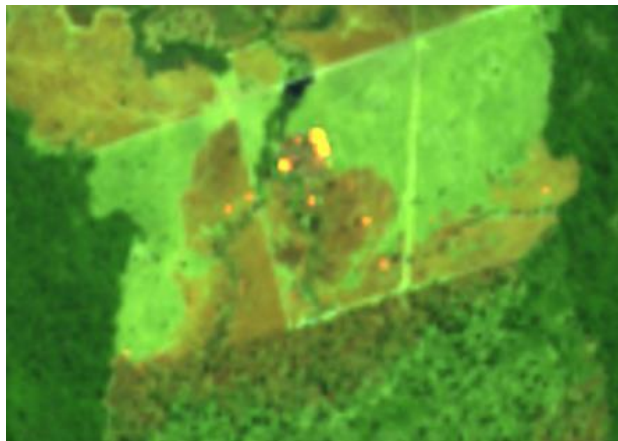
Imagery © 2019 Planet Labs Inc.

August 2019



Imagery © 2019 Planet Labs Inc.

August 17, 2019



Source: European Union, contains modified Copernicus Sentinel data 2019, processed with EO Browser

Fazenda Lagoa do Triunfo IV is a 30,204 ha farm (co-)owned by Agropecuária Santa Bárbara Xinguara (AgroSB).² Between May 27 and July 13, 2019, 163 ha of native vegetation was cleared on the farm, and between July and August 2019, another 273 ha was cleared.³ AgroSB is the owner of all six farms named Fazenda Lagoa do Triunfo (I, II, III, IV, V, VI).⁴ On August 17, 2019, NASA detected fires on Fazenda Lagoa do Triunfo IV. Allegedly, AgroSB raised cattle on embargoed areas on the group of AgroSB farms and sold them to JBS.⁵ While JBS stated in 2017 that it blocked all farms related to Agropecuária Santa Bárbara Xinguara from selling livestock to JBS⁶, cattle from the group of AgroSB farms still indirectly supplied the company recently. In fact, cattle from embargoed areas was transferred for fattening to Fazenda Espírito Santo, which supplies JBS, Minerva, Frigol, Marfrig and Frigorífico Valêncio.^{7,8}

² <http://car.semas.pa.gov.br/>

³ http://www.mightyearth.org/wp-content/uploads/Rapid-Response_soy-and-cattle_report-5.pdf

⁴ <http://car.semas.pa.gov.br/>

⁵ <https://www.theguardian.com/environment/2019/jul/02/revealed-amazon-deforestation-driven-global-greed-meat-brazil>

⁶ <https://reporterbrasil.org.br/2017/06/respostas-da-jbs/>

⁷ <https://www.theguardian.com/environment/2019/jul/02/revealed-amazon-deforestation-driven-global-greed-meat-brazil>

⁸ Animal Transfer Data

2. PDS Vale do Jamanxim and Floresta Nacional do Jamanxim (Novo Progresso, Pará) – Amazon

December 2018



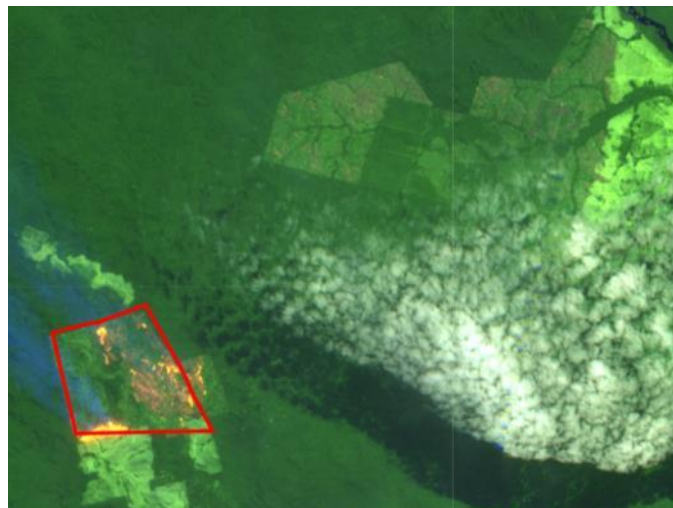
Imagery © 2019 Planet Labs Inc.

June 11, 2019



Imagery © 2019 Planet Labs Inc.

August 5, 2019



Source: European Union, contains modified Copernicus Sentinel data 2019, processed with EO Browser

Between April and June 2019, 3,932 ha of Amazon rainforest was cleared in the rural settlement PDS Vale do Jamanxim, which overlaps with the Floresta Nacional do Jamanxim (Jamanxim National Forest).⁹ The PDS Vale do Jamanxim was established in 2005 by the National Institute of Colonization and Agrarian Reform (INCRA) for the settlement of 441 families.¹⁰ However, since 2007, this rural settlement has been legally suspended. In addition, there is not an approved forest management plan for public-private forest concessions to operate inside the Floresta Nacional do Jamanxim.¹¹ Still, forest clearings and considerable fires continue in this deforestation hotspot, as shown in the images.

⁹ <http://www.mightyearth.org/soy-and-cattle-report-3/>

¹⁰ <http://painel.incra.gov.br/sistemas/index.php>

¹¹ <https://epoca.globo.com/ciencia-e-meio-ambiente/blog-do-planeta/noticia/2017/10/por-que-floresta-de-jamanxim-nao-foi-concedida-para-exploracao-sustentavel.html>

3. Fazenda Pontal I e II (Nova Maringá, Mato Grosso) – Amazon

June 1, 2019



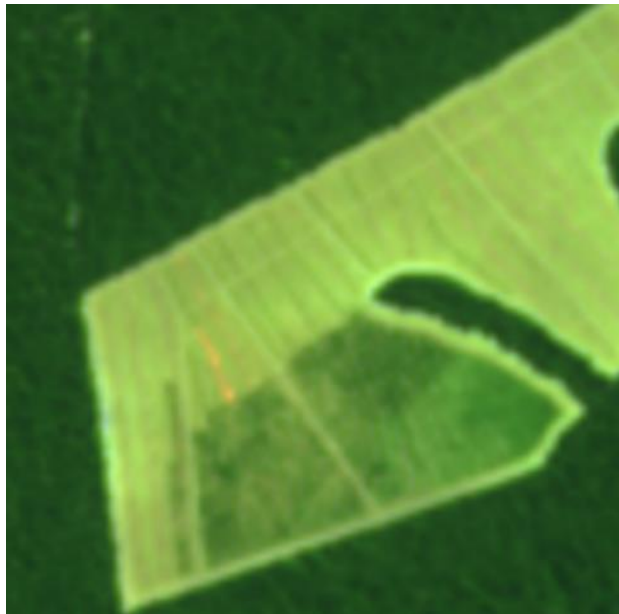
Imagery © 2019 Planet Labs Inc.

August 16, 2019



Imagery © 2019 Planet Labs Inc.

August 3, 2019



Source: European Union, contains modified Copernicus Sentinel data 2019, processed with EO Browser

Between June 1 and August 16, 2019, 796 ha of native vegetation was cleared on the two properties,¹² and fires were detected there on August 3, 2019. Neuza Terezinha de Brida and Nilson de Brida own Fazenda Pontal I e II, totalling 5,205 ha. There are multiple farms linked to the de Brida family, most of which are involved in logging and cattle production. For instance, the farm Fazenda Pontal, owned by Neli de Brida, supplied cattle to a JBS slaughterhouse in Diamantino (MT).¹³ There have been fires detected in Fazenda Pontal I e II, suggesting that part of previously cleared areas (cleared between June and November 2017) are now being prepared for agricultural use. Moreover, the dotted pattern in the images is linked to logging and suggests that the land is being prepared for more deforestation.

¹² http://www.mightyearth.org/wp-content/uploads/Rapid-Response_soy-and-cattle_report-5.pdf

¹³ Animal Transfer Data

4. Fazenda Mirandópolis / Fazenda Vó Constância (Feliz Natal, Mato Grosso) - Amazon

March 16, 2019



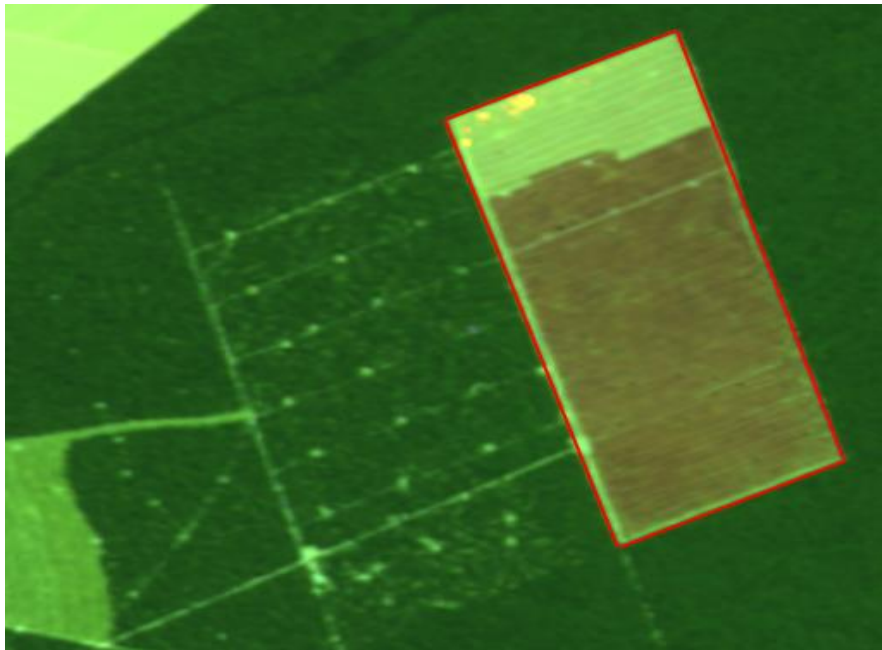
Imagery © 2019 Planet Labs Inc.

May 20, 2019



Imagery © 2019 Planet Labs Inc.

August 7, 2019



Source: European Union, contains modified Copernicus Sentinel data 2019, processed with EO Browser

Between March 16 and May 20, 2019, 324 ha of semideciduous seasonal forest was cleared on the farm, including 45 ha inside the farm's declared Legal Reserve,¹⁴ and fires were detected in the farm on August 7, 2019. The ownership of this 12,510 ha farm area is under dispute between Ian Zibetti Francio and Ilton Vicentini. Ian Zibetti Francio has links with companies such as Santa Laura Compra e Venda de Madeiras and Imaçu Industrial e Florestal, both linked to timber extraction and logging.

¹⁴ <http://www.mightyearth.org/soy-and-cattle-report-2/>

5. Fazenda Tapera Grande (Correntina, Bahia) - Cerrado

March 15, 2019



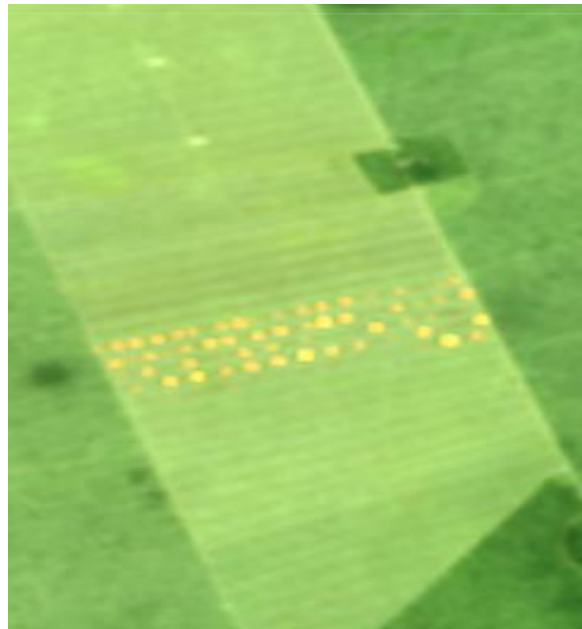
Imagery © 2019 Planet Labs Inc.

May 10, 2019



Imagery © 2019 Planet Labs Inc.

August 3, 2019



Source: European Union, contains modified Copernicus Sentinel data 2019, processed with EO Browser

Between March 15 and May 10, 2019, 834 ha of forested savanna was cleared on the farm,¹⁵ and on August 18, NASA detected fires on this farm. Fazenda Tapera Grande is a 1,239 ha owned by Vera Lúcia Orth. Agropecuária Tapera Grande Indústria e Comércio, which is owned by Vera Lúcia Orth's family members Afonso Orth, Douglas Orth and Irineu Orth, is also registered at this location. The Orth Family is also partner of the Cooperativa dos Produtores Rurais de Rosário through Daniel Orth. Data from 2014 from the National Supply Company (CONAB) links cotton produced in Fazenda Tapera Grande - through the Cooperativa dos Produtores Rurais de Rosário - to Cargill Agrícola and others in Luís Eduardo Magalhães, Bahia. Cargill responded that they "have not negotiated with this farm or farmer."

¹⁵ <http://www.mightyearth.org/soy-and-cattle-report-2/>

6. Fazenda São José - Parcela 10 (Formoso Do Rio Preto, Bahia) - Cerrado

April 6, 2019



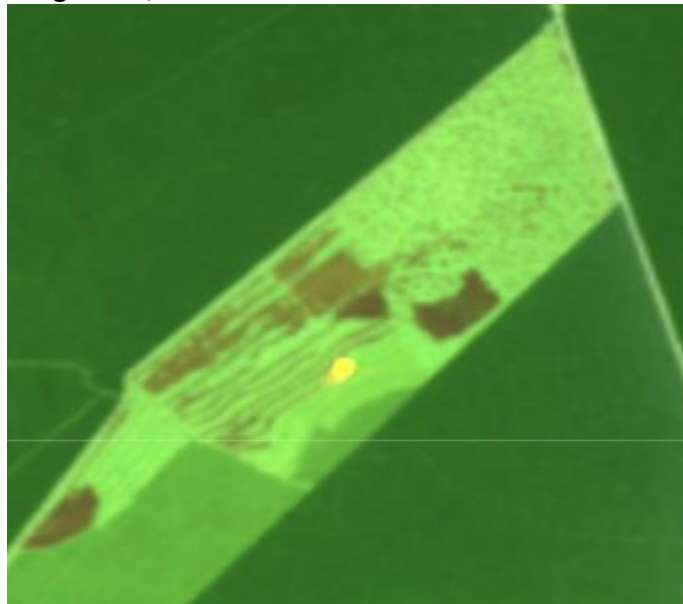
Imagery © 2019 Planet Labs Inc.

June 6, 2019



Imagery © 2019 Planet Labs Inc.

August 13, 2019



Source: European Union, contains modified Copernicus Sentinel data 2019, processed with EO Browser

Between April 6 and June 6, 2019, 1,611 ha of wooded savanna was cleared on this farm, and fires were detected on the farm on August 13, 2019.¹⁶ José Valter Dias and the company JJF Holding de Investimentos e Participações are the alleged owners of this 3,887 ha farm, although they are both involved in one of the largest land grabbing cases in Brazil, claiming the ownership of 255 properties totalling 366,000 ha.¹⁷ Bunge, Cargill, and LDZ Grãos (formerly Amaggi & LD Commodities) have warehouses that are located inside these properties.

¹⁶ <http://www.mightyearth.org/soy-and-cattle-report-3/>

¹⁷ <https://economia.estadao.com.br/noticias/geral,congresso-investiga-grilagem-na-bahia,70002636375>

7. Fazenda Agropecuária Albuquerque (Formoso Do Rio Preto, Bahia) – Cerrado

March 25, 2019



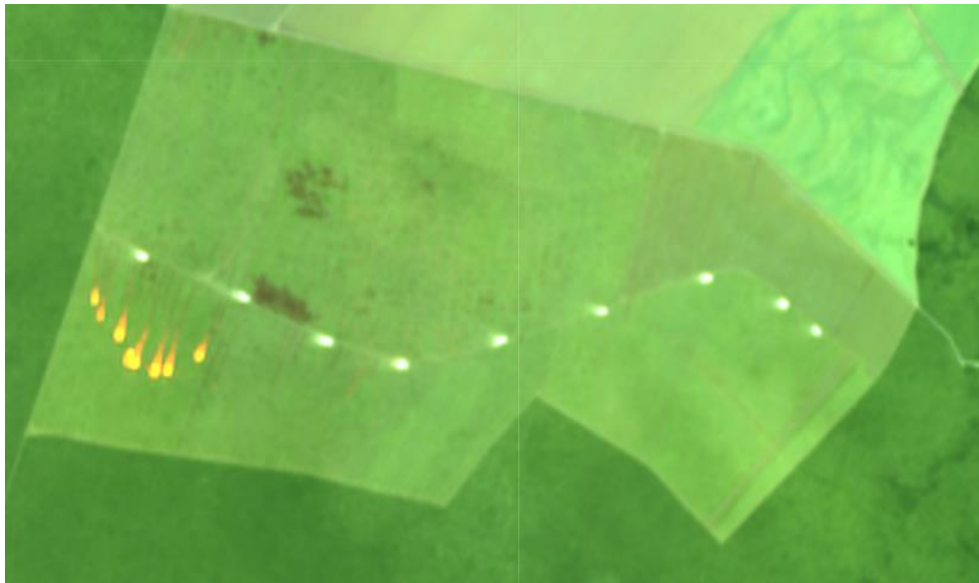
Imagery © 2019 Planet Labs Inc.

May 11, 2019



Imagery © 2019 Planet Labs Inc.

August 23, 2019



Source: European Union, contains modified Copernicus Sentinel data 2019, processed with EO Browser

Between April 16 and June 8, 2019 837 ha of wooded savanna was cleared on this farm, including 147 ha within the farm’s declared Legal Reserve,¹⁸ and fires were detected on the farm on August 23, 2019. The farm belongs to members of the Toledo de Albuquerque family from Alagoas state, and this family has a history of receiving environmental fines. Registered landowner João Toledo de Albuquerque is directly involved in seven labor law infractions.¹⁹ Cargill confirmed that they currently purchase from this farm, and they stated that they “will review further if future negotiations takes [sic] place.” However, after further questioning, Cargill did not share what the further review entails.

¹⁸ <http://www.mightyearth.org/soy-and-cattle-report-3/>

¹⁹ Former Brazilian Ministry of Labor and Employment (currently merged with the Ministry of Economy)

8. Fazenda Bananal IX (Luís Eduardo Magalhães, Bahia) - Cerrado

April 15, 2019



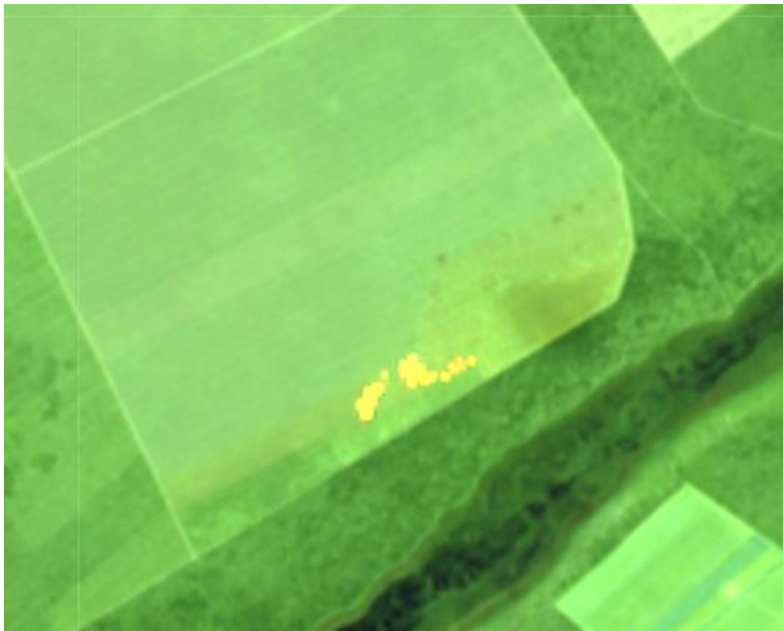
Imagery © 2019 Planet Labs Inc.

July 13, 2019



Imagery © 2019 Planet Labs Inc.

August 3, 2019



Source: European Union, contains modified Copernicus Sentinel data 2019, processed with EO Browser

Between April 15 and July 13, 2019, 1,155 ha of woody-grass savanna was cleared, including 10 ha within the farm's declared Legal Reserve, and an additional 1,632 ha of wooded savanna was cleared in the first quarter of 2019. Fires were detected on this farm on August 23, 2019. Fazenda Bananal IX is a 6,586 ha farm registered by Agrifirma Brasil, a joint venture between Brasil Agronegócio FIP,²⁰ a private equity fund managed by BRZ Investimentos, and Genagro, based in London.²¹ Brasil Agronegócio FIP invested BRL 160 million in this joint venture company.²² Cargill has purchased soy from a farmer who rents on this property, but the company asserted that land clearing occurred after the planting of soy and that the farm is not on the IBAMA list of embargoed areas. Cargill did not share whether it intends to suspend this supplier in the future.

²⁰ <https://www.valor.com.br/empresas/1000146/mesmo-com-captacao-agrifirma-mantem-planos-de-ipo>

²¹ <http://www.genagro.net/index.html>

²² <http://www.mightyearth.org/soy-and-cattle-report-4/>

9. Agropecuária Cimpar / Fazenda Rio Verde / Fazenda Alto Garças / Fazenda Palmeira das Missões / Fazenda Indianópolis / Fazenda Palmeira das Missões, / Fazenda Indianópolis / Fazenda Rio Verde (Uruçuí, Piauí) - Cerrado

May 20, 2019



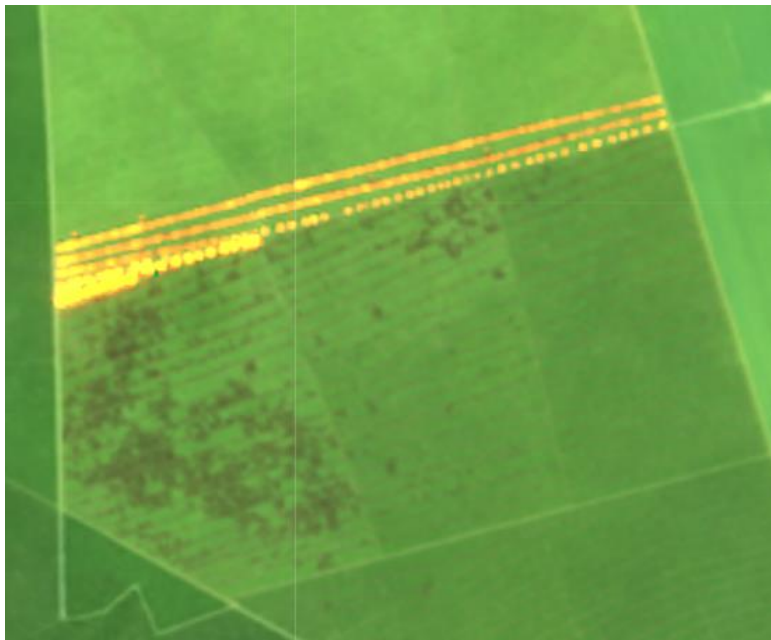
Imagery © 2019 Planet Labs Inc.

July 29, 2019



Imagery © 2019 Planet Labs Inc.

Aug 18, 2019



Source: European Union, contains modified Copernicus Sentinel data 2019, processed with EO Browser

Between October 2018 and June 8, 2019, 888 ha of wooded savanna was cleared on Fazenda Palmeira das Missões, Fazenda Indianópolis, and Fazenda Rio Verde.²³ Between May 20 and July 29, 2019, an additional 901 ha of woody-grass savanna was cleared on Agropecuária Cimpar, Fazenda Rio Verde, Fazenda Alto Garças, Fazenda Palmeira das Missões, and Fazenda Indianópolis.²⁴ Fires were detected in the deforested area on August 23, 2019. These farms are operated by the Aernoudts family, who control a range of companies in the area, including Agropecuária Aernoudts, Agropecuária Nova Granja Guará, Agropecuária Nova Granja Zelândia, Agropecuária Uberlândia, Agrisa Agropecuária, and Agropecuária Aernoudts Sul. Confirmed past clients of the Aernoudts family include Bunge Alimentos, Noble Brasil, Nidera Sementes (now part of COFCO International), Truman Brazilian Trading, and Vida Grãos. Bunge confirmed that they had a partial commercial relationship with this farm during the last

²³ <http://www.mightyearth.org/soy-and-cattle-report-3/>

²⁴ <http://www.mightyearth.org/soy-and-cattle-report-4/>

harvest season, and they stated, “For these farms, as for all others that we source from, we make certain that no purchases are related to embargo areas nor to modern slavery activities. We continue our engagement process with farmers so they understand our commitments.”

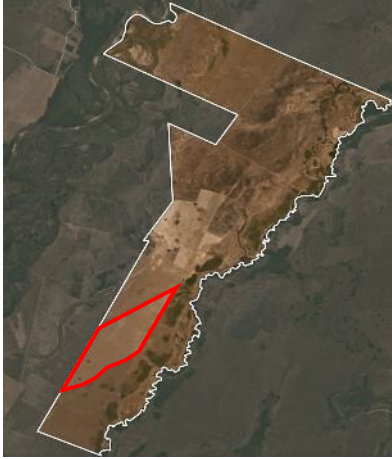
10. Fazenda Forquilha (Cocalinho, Mato Grosso) - Cerrado

May 21, 2019



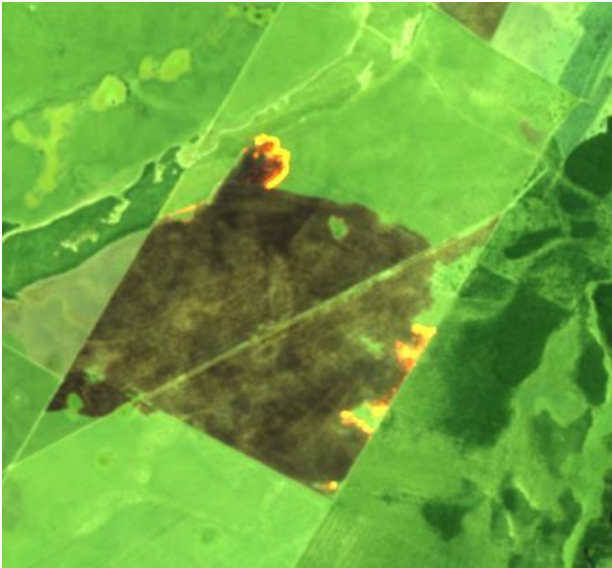
Imagery © 2019 Planet Labs Inc.

August 8, 2019



Imagery © 2019 Planet Labs Inc.

August 9, 2019



Source: European Union, contains modified Copernicus Sentinel data 2019, processed with EO Browser

There is a cumulative deforestation in this farm happening since January 2019 and totaling 1,717 ha until July 2019. This farm, which was reported by Rapid Response in its fifth report,²⁵ is owned by Gerci Lopes Rampelotto.²⁶ In 2018, the bordering farm Fazenda Furquilha, owned by Fernanda Rampeloto Balbino, a family member, sent cattle to Fazenda Minerva - EPE021 in Abaetetuba, Pará (owned by Minerva). Moreover, in 2019 Benjamin Rampelotto Junior, another family member, sent animals for

²⁵ http://www.mightyearth.org/wp-content/uploads/Rapid-Response_soy-and-cattle_report-5.pdf

²⁶ <https://www.olhardireto.com.br/noticias/exibir.asp?id=30137¬icia=ministerio-aponta-quem-sao-os-75-maiores-desmatadores-do-estado>

fattening from Fazenda Forquilha to 22 other farms. There are direct suppliers of JBS and Marfrig plants among the farms supplied with cattle from Fazenda Forquilha.²⁷

11. Fazenda Sol Nascente (Nova Nazaré, Mato Grosso) - Cerrado

March 8, 2019



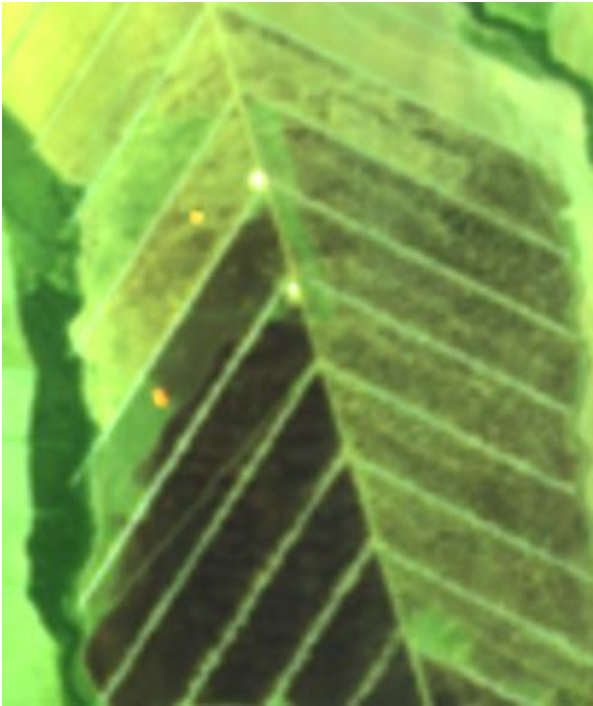
Imagery © 2019 Planet Labs Inc.

July 13, 2019



Imagery © 2019 Planet Labs Inc.

August 4, 2019



Source: European Union, contains modified Copernicus Sentinel data 2019, processed with EO Browser

Between March 8 and July 13, 2019, 793 ha of woody-grass savanna was cleared on this farm,²⁸ and fires were detected on the farm on August 4, 2019. Dilceu Borges, the farm owner, is linked to the company group Fazendas Nova Geração (FNG)²⁹ and owns another 809,977 ha in rural properties in

²⁷ Animal Transfer Data

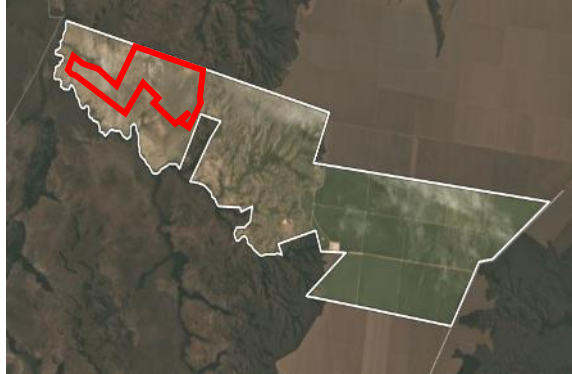
²⁸ <http://www.mightyearth.org/soy-and-cattle-report-4/>

²⁹ <https://webcache.googleusercontent.com/search?q=cache:7T4r8JMaOFYJ:https://www.consultasocio.com/g/sa/dilceu-borges+&cd=1&hl=en&ct=clnk&gl=nl>

Mato Grosso. Dilceu Borges sold corn produced on his farms Fazenda Nova Regeração and Fazenda Nova Geração (both located in Costa Rica, Mato Grosso) to ADM and Bunge in 2017.³⁰

12. Fazenda Nebraska (Balsas, Maranhão) - Cerrado

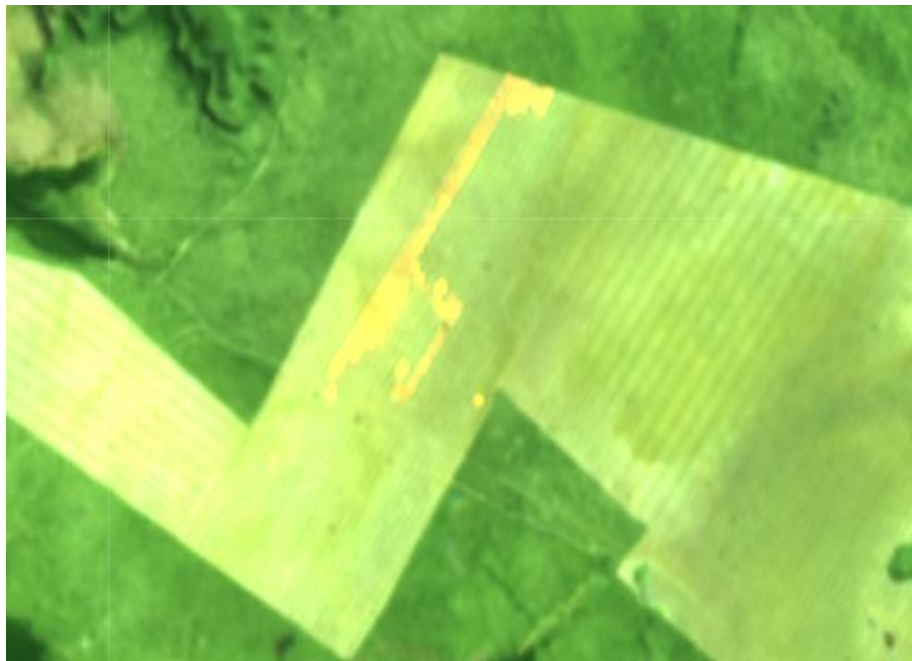
18 January 2019



13 May 2019



August 16, 2019



Between January 18 and May 13, 2019, 954 ha of wooded savanna was cleared,³¹ and fires were detected on this farm on August 16, 2019. Fazenda Nebraska is a subsidiary of Guabijú Agronegócio, headquartered in Rio de Janeiro and affiliated with the Canadian company Brookfield Asset Management (Brookfield).³² Brookfield is considered one of the main players in land grabbing in Brazil. In addition, according to a Chain Reaction Research report, Brookfield is connected to 13,746 ha of

³⁰ https://www.conab.gov.br/comercializacao/leiloes-agropecuarios/pepro/item/download/16621_eaeae835fc8e1d02b3245a8eb03841c8

³¹ <http://www.mightyearth.org/soy-and-cattle-report-2/>

³² <http://www.brookfieldbrasilra.com.br/equipe/>

deforestation in the Matopiba region from 2000 to 2017.³³ Bunge confirmed that they had a partial commercial relationship with this farm during the last harvest season, and they stated, “For these farms, as for all others that we source from, we make certain that no purchases are related to embargo areas nor to modern slavery activities. We continue our engagement process with farmers so they understand our commitments.” Cargill confirmed that they currently purchase from this farm, and they stated that they “will review further if future negotiations takes [sic] place.” However, after further questioning, Cargill did not share what the further review entails.

The Rapid Response program has received support, in part, from the International Climate and Forest Initiative (NICFI) scheme managed by the Norwegian Agency for Development Cooperation (Norad). This report does not necessarily reflect the standpoints of Norad.

The work of Mighty Earth is supported by Waxman Strategies. Waxman Strategies is funded by Aidenvironment under grant from the Norwegian Agency for Development Cooperation. Additional information is on file with the Department of Justice, Washington, D.C.

³³ <https://chainreactionresearch.com/wp-content/uploads/2018/12/Foreign-Farmland-Investors-in-Brazil-Linked-to-423000-Hectares-of-Deforestation-2.pdf>