



MIGHTY EARTH



RAPID RESPONSE

Soy & Cattle Report

Report 9

January 2020



Prepared with

aidenvironment
Waxman

Executive Summary

This report presents nine cases of land clearing based on alerts data from DETER (System for Monitoring Deforestation on Real Time) and PRODES (Program for Deforestation Calculation) observed between October 27, 2019 and November 28, 2019 in the Brazilian Amazon and Cerrado biomes. Land clearing alerts considered in this report were visually confirmed. Four of the selected cases are in the Amazon biome and five are in the Cerrado biome.

Cleared land per municipality of all cases included in this report (in hectares)

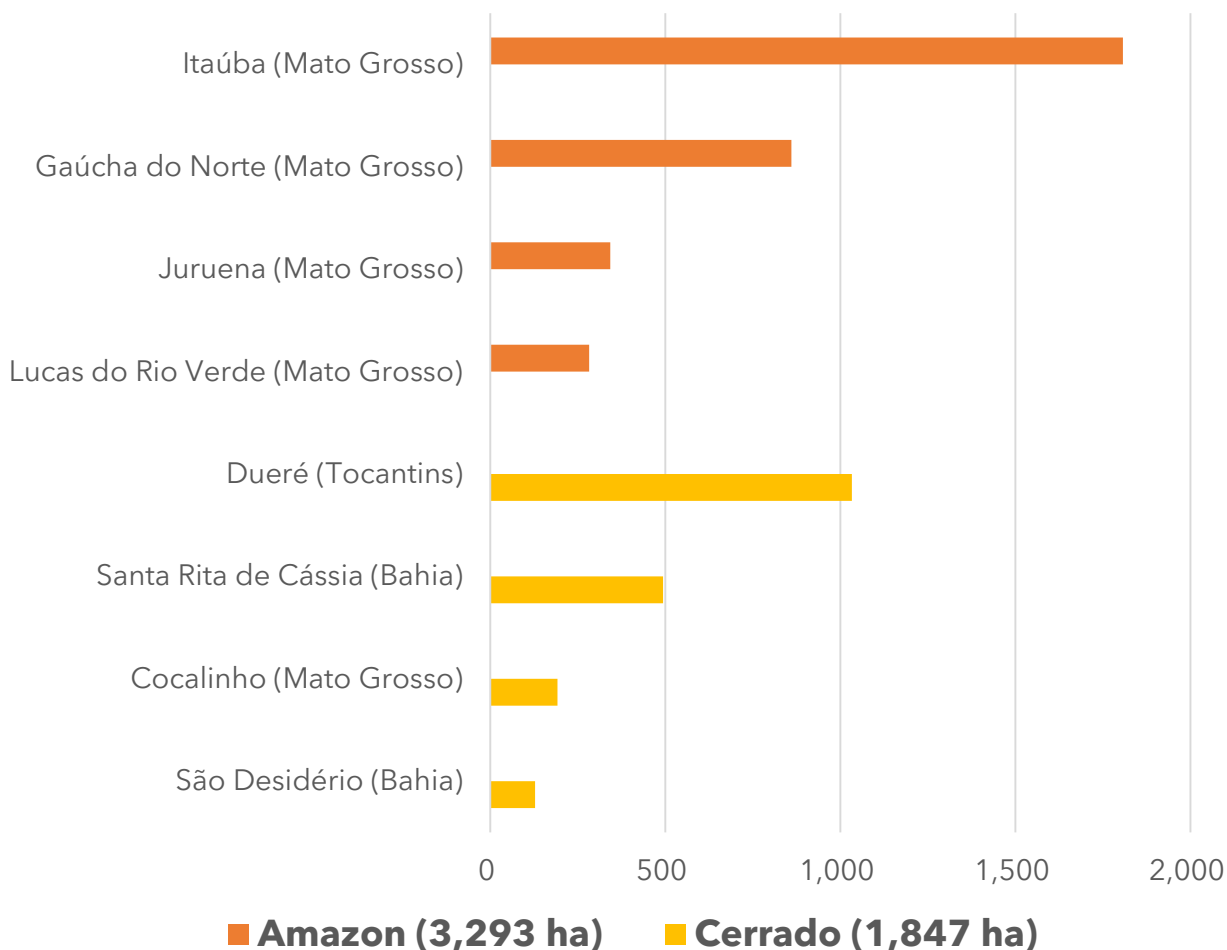


Table of Contents

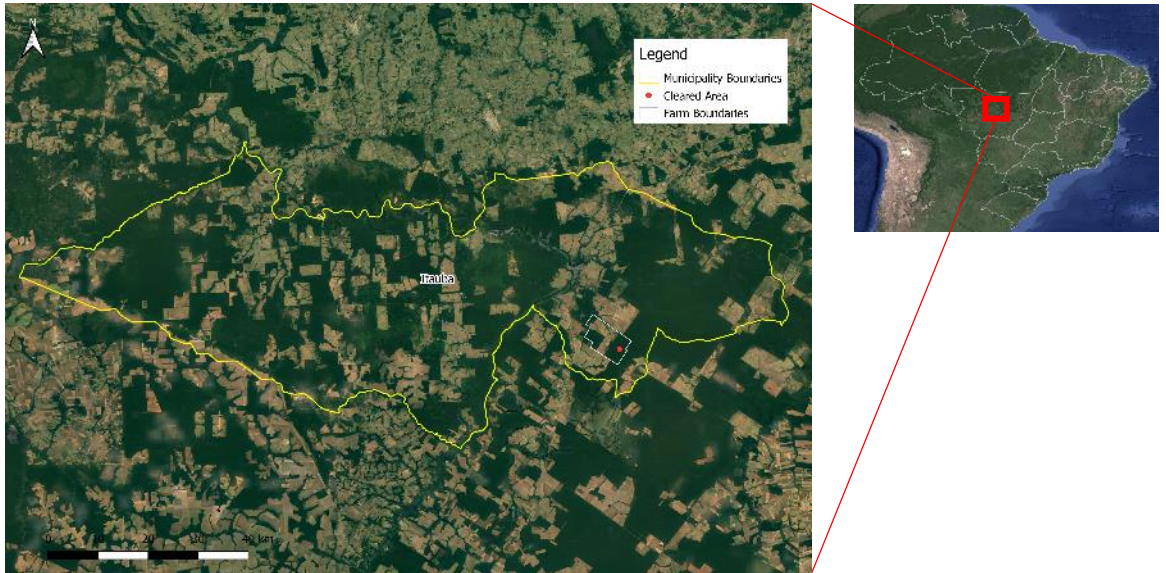
Amazon Biome

1.	Fazenda São João – Itaúba (Mato Grosso)	4
2.	Fazenda Batovi – Gaúcha do Norte (Mato Grosso)	6
3.	Fazenda Cerejeiras / Fazenda Jaracatiá – Juruena (Mato Grosso)	8
4.	Fazenda Corumbá II / Fazenda Corumbá I and III, and Fazenda Sertão – Lucas do Rio verde (Mato Grosso)	10

Cerrado Biome

5.	Fazenda Tingui / Fazenda Remansão – Dueré (Tocantins)	12
6.	Fazenda Novale – Santa Rita de Cássia (Bahia)	15
7.	Fazenda Piracicaba – Santa Rita de Cássia (Bahia)	18
8.	Fazenda São Domingos (Fazenda Cobiçada Gleba 1/1A) Cocalinho (Mato Grosso)	20
9.	Fazenda Santana I – São Desidério (Bahia)	22

Property Location



Yellow border – boundary of Itaúba (Mato Grosso) / White border – boundary of Fazenda São João / Red dot – location of cleared area

Alert Imagery (before and after clearance)

05-Aug-2019



Source: European Union, contains modified Copernicus Sentinel data 2019, processed with EO Browser

18-Nov-2019



Source: European Union, contains modified Copernicus Sentinel data 2019, processed with EO Browser



Source: European Union, contains modified Copernicus Sentinel data 2019, processed with EO Browser

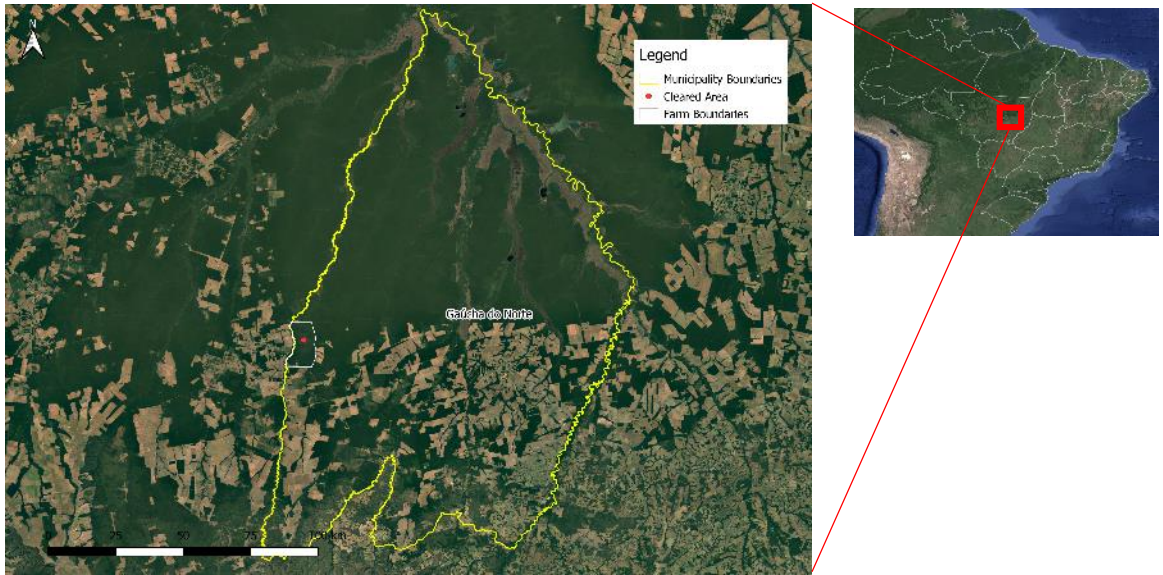
General Information		
Property; Registry	Fazenda São João	9110200312832
Size (ha); Coordinates	4,940	-55.24473, -11.20649
Land Clearance		
Period of clearing	05 Aug to 18 Nov 2019	
Size (ha); Coordinates	1,807	-55.21788, -11.22348
Inside Forest Code protected areas	Yes	1,807 ha inside declared Legal Reserve
Type of vegetation	Ombrophilous Forest transition	
Legal Status		
Embargoes	No	-
Environmental fines	No	-
Natural Reserves	No	-
Indigenous Lands	No	-
Priority for biodiversity conservation	No	
Ownership		
Company group	no linked companies found	
Other linked properties	1 other property in Cláudia (MT): Fazenda Lagoa Azul - Esperança I (1,210 ha)	
Supply Chain		
Main commodity	Multiple	
Confirmed supply chain relation	Yes	
Soy	Main traders in municipality	Bunge (100%)
	Warehouses within 50 km radius	28 warehouses, e.g.: 1 owned by Cargill (720,000 MT) and 3 owned by COFCO (124,000 MT)
	Supply chain details	-
Beef	Main traders in municipality	JBS (79%), Marfrig (11%), CP Comercial (4%), Minerva (2%) and others (4%)
	Slaughterhouses sourcing from municipality	6 different beef processors sourced cattle from Itaúba in 2019, e.g.: 2 owned by JBS (Diamantino and Colider) and 2 owned by Vale Grande (Matupá and Nova Canaã do Norte)
	Supply chain details	-
Other supply chain details	-	

IBAMA named Fazenda São João on a “dirty list” of properties with environmental embargoes, and this list was the basis for a court case opened by the Federal Prosecutors in 2013 called “Pecuária Sustentável” (1). Fazenda São João was part of the court case for receiving fines for environmental degradation in 2006. In 2013, the state punishment for environmental crimes in Fazenda São João was prescribed and the court case linked to these crimes was closed by a local judge in Sinop (2). Consequently, in 2014, a Federal judge in Sinop (MT) decided to exclude Fazenda São João from the “Pecuária Sustentável” dirty list (3).

The family that owns Fazenda São João was also part of the ownership dispute of Gleba Atlântica Grandes Matas and was obliged to leave the area in 2018 (4). Other family members manage Estância Rodeio in Sinop (MT), Fazenda Santo Ângelo, Estância Berrante and Estância Velho Pai, all in Itaúba (MT), and other properties in Paranaíba (MT), Nova Santa Helena (MT) and Altamira (PA).

- (1) http://www.mpf.mp.br/mt/sala-de-imprensa/pecuaria-sustentavel/Recomendacao_BNDES_Pecuaria%20Sustentavel.pdf
- (2) <https://www.jusbrasil.com.br/diarios/58221425/djmt-23-08-2013-pg-462>
- (3) <https://www.jusbrasil.com.br/diarios/73230764/djmt-18-07-2014-pg-394>
- (4) <http://www.folhamt.com.br/artigo/319867/Moradores-da-Gleba-Grandes-Matas-de-Sinop-terao-que-desocupar-area-por-decisao-judicial>

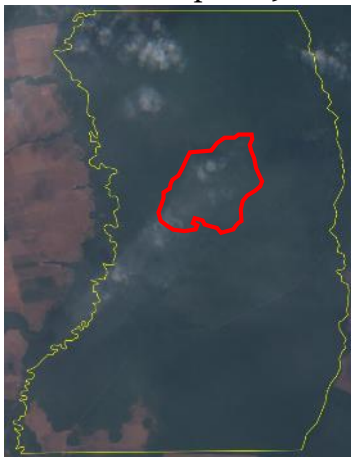
Property Location



Yellow border – boundary of Gaúcha do Norte (Mato Grosso) / White border – boundary of Fazenda Batovi / Red dot – location of cleared area

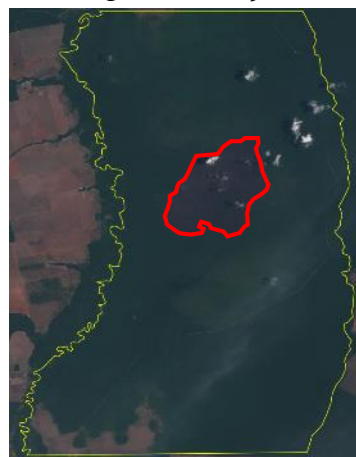
Alert Imagery (before and after clearance)

01-Sep-2019



Source: European Union, contains modified Copernicus Sentinel data 2019, processed with EO Browser

31-Oct-2019



Source: European Union, contains modified Copernicus Sentinel data 2019, processed with EO Browser



Source: European Union, contains modified Copernicus Sentinel data 2019, processed with EO Browser

2. Fazenda Batovi

Gaúcha do Norte (Mato Grosso)

General Information			
Property; Registry	Fazenda Batovi	9010322823752	
Size (ha); Coordinates	15,031	-53.94970, -13.07999	
Land Clearance			
Period of clearing	01 Sep to 31 Oct 2019		
Size (ha); Coordinates	860	-53.94110, -13.05646	
Inside Forest Code protected areas	Yes	860	ha inside declared Legal Reserve and APP
Type of vegetation	Semideciduous Seasonal Forest		
Legal Status			
Embargoes	No	-	
Environmental fines	No	-	-
Natural Reserves	No	-	
Indigenous Lands	Yes	Bordering TI Batovi (Waurá) - inside the Indigenous Park of Xingu	
Priority for biodiversity conservation	High		
Ownership			
Company group	Batovi Agropecuária		
Other linked properties	no other linked properties found		
Supply Chain			
Main commodity	Soy		
Confirmed supply chain relation	No		
Soy	Main traders in municipality	Gavillon (17%), ADM (16%), Cargill (6%), Multigrain (6%), others (18%) and domestic consumption (37%)	
	Warehouses within 50 km radius	10 warehouses, e.g.: 2 owned by Macuco Agropecuária (33,000 MT) and 1 owned by Bunge (30,000 MT)	
	Supply chain details	-	
Beef	Main traders in municipality	Marfrig (85%), JBS (9%) and others (6%)	
	Slaughterhouses sourcing from municipality	6 different beef processors sourced cattle from Gaúcha do Norte in 2019, e.g.: 2 owned by JBS (Água Boa and Barra do Garças) and 2 owned by Marfrig (Paranatinga and Nova Xavantina)	
	Supply chain details	-	
Other supply chain details	-		

The company Batovi, the owner of the farm in this case, was closed in 2017 (1). There is no Environmental Database Declaration (CAR) in the area that could indicate recent operations or agricultural production.

Batovi was prosecuted and convicted in 2010 for lacking transparency regarding the use of financial benefits in an Amazon Development Agency (Sudam) program (2, 3).

During the recognition and delimitation of the Terra Indígena Batovi (Waujá people), Batovi Agropecuária alleged that the claimed area was under their ownership. The process started in 1992, and after 10 years, FUNAI recognized the Indigenous Land (4).

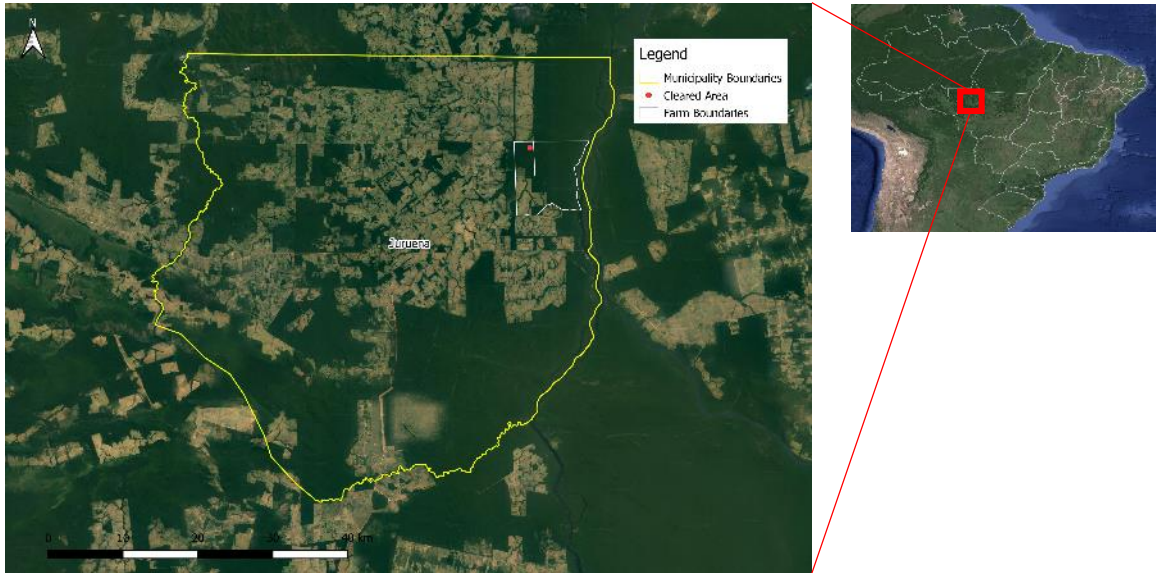
(1) <https://www.sefaz.mt.gov.br/cadastro/emissaocartao/emissaocartaocontribuinteacessodireto>

(2) <https://economia.ig.com.br/empresas-de-agronegocio-terao-de-devolver-recursos-a-sudam/n1237561136844.html>

(3) <https://www.suinoculturaindustrial.com.br/imprensa/aplicacao-irregular/20100218-102342-F111>

(4) <https://pib.socioambiental.org/es/Not%C3%Adcias?id=9592>

Property Location



Yellow border – boundary of Juruena (Mato Grosso) / White border – boundary of Fazenda Cerejeiras and Fazenda Jaracatiá / Red dot – location of cleared area

Alert Imagery (before and after clearance)

02-Sep-2019

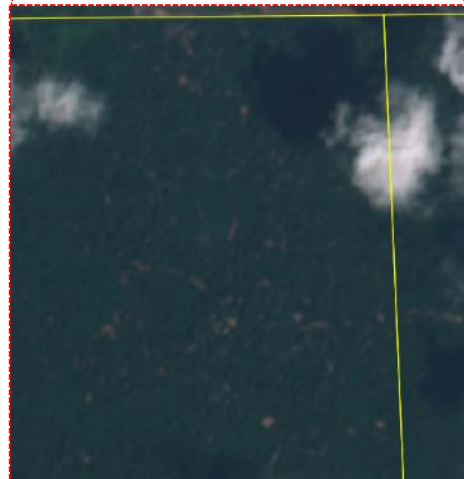


Source: European Union, contains modified Copernicus Sentinel data 2019, processed with EO Browser

26-Nov-2019



Source: European Union, contains modified Copernicus Sentinel data 2019, processed with EO Browser



Source: European Union, contains modified Copernicus Sentinel data 2019, processed with EO Browser

3. Fazenda Cerejeiras / Fazenda Jaracatiá Juruena (Mato Grosso)

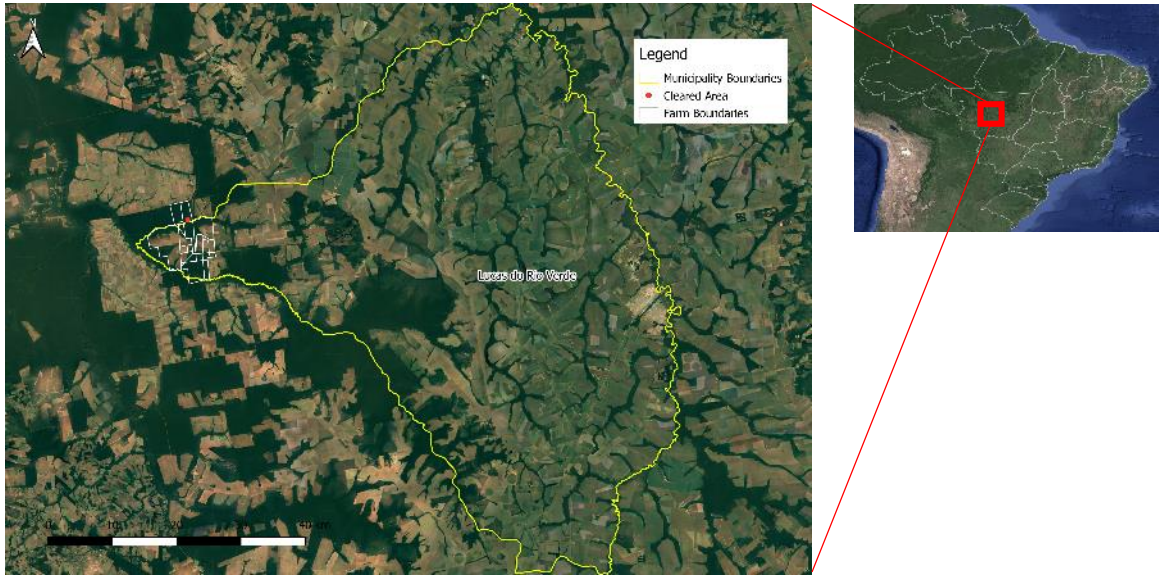
General Information		
Property; Registry	Fazenda Cerejeiras / Fazenda Jaracatiá	9013771036403
Size (ha); Coordinates	8,074	-58.39609, -10.27201
Land Clearance		
Period of clearing	02 Sep to 26 Nov 2019	
Size (ha); Coordinates	343	-58.42272, -10.23518
Inside Forest Code protected areas	Yes	343 ha inside declared Legal Reserve
Type of vegetation	Ombrophilous Dense Forest	
Legal Status		
Embargoes	No	-
Environmental fines	No	-
Natural Reserves	No	-
Indigenous Lands	No	-
Priority for biodiversity conservation	Very high	
Ownership		
Company group	no linked companies found	
Other linked properties	9 other properties, not possible to check total size. In Juruena (MT): Sítio Saraiva, Sítio Iasmim, Sítio Planície, Sítio Cachoeira, Sítio Santa Fé, Sítio Estância Firmino, Chácara Fundão and Sítio Iasmim 2. In Cotriguaçu (MT): Fazenda Vó Ivete	
Supply Chain		
Main commodity	Beef	
Confirmed supply chain relation	Yes	
Soy	Main traders in municipality	Domestic consumption (100%)
	Warehouses within 50 km radius	No warehouses neither within 100 km radius
	Supply chain details	-
Beef	Main traders in municipality	Marfrig (58%), JBS (30%), Minerva (5%) and others (7%)
	Slaughterhouses sourcing from municipality	5 different beef processors sourced cattle from Juruena in 2019, e.g.: 1 owned by JBS (Juina), 1 owned by Marfrig (Tangará da Serra), and 1 owned by Vale Grande (Nova Canaã do Norte)
	Supply chain details	Direct supplier to JBS (Juruena) and Marfrig (Tangará da Serra), in 2018 and 2019. Indirect supplier to JBS (Sapezal and Pontes e Lacerda) through Fazenda Rafaela, in Sapezal (MT), in 2018 and 2019
Other supply chain details	-	

Fazenda Cerejeiras and Fazenda Jaracatiá directly supply cattle to Marfrig in Tangará da Serra (MT) and JBS in Juruena (MT). In 2010, the owners of these properties signed an agreement with the Mato Grosso environmental agency for the restoration of native vegetation after committing illegal deforestation in a property in Juruena (1).

(1) <https://www.jusbrasil.com.br/diarios/28225299/pg-6-diario-oficial-do-estado-do-mato-grosso-doemt-de-06-01-2011>

4. Fazenda Corumbá II / Fazenda Corumbá I and III, Amazon and Fazenda Sertão - Lucas do Rio Verde (Mato Grosso) biome

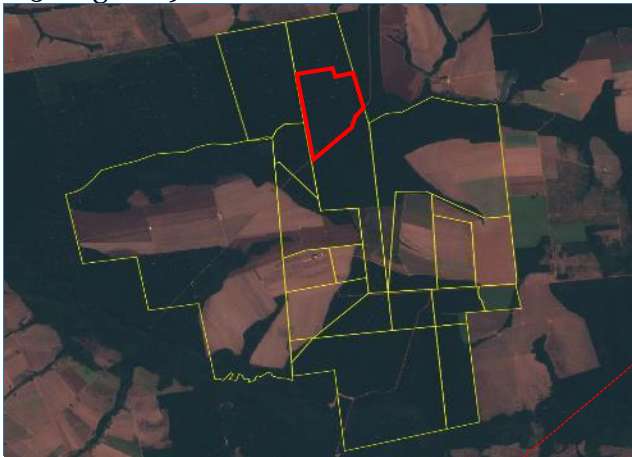
Property Location



Yellow border – boundary of Lucas do Rio Verde (Mato Grosso) / White border – boundary of Fazenda Corumbá II / Fazenda Corumbá I and III, and Fazenda Sertão / Red dot – location of cleared area

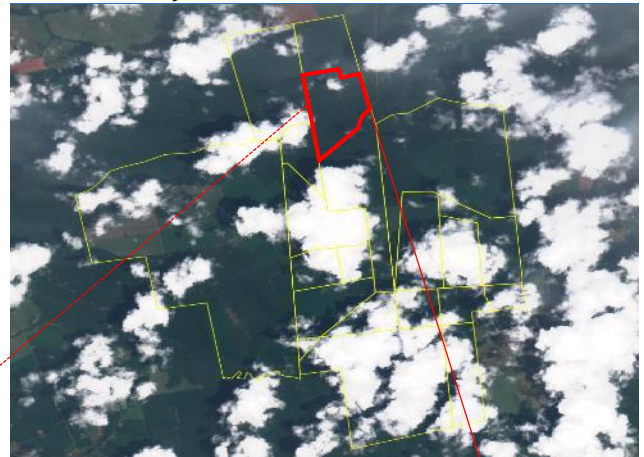
Alert Imagery (before and after clearance)

05-Aug-2019

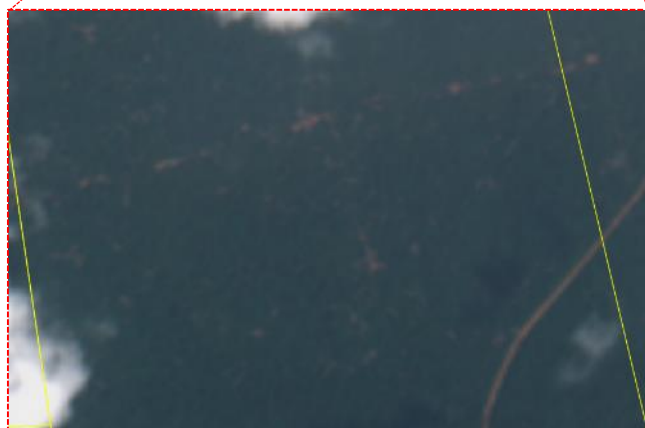


Source: European Union, contains modified Copernicus Sentinel data 2019, processed with EO Browser

08-Dec-2019



Source: European Union, contains modified Copernicus Sentinel data 2019, processed with EO Browser



Source: European Union, contains modified Copernicus Sentinel data 2019, processed with EO Browser

4. Fazenda Corumbá II / Fazenda Corumbá I and III, Amazon and Fazenda Sertão - Lucas do Rio Verde (Mato Grosso) **Amazon biome**

General Information		
Property; Registry	Fazenda Corumbá II / Fazenda Corumbá I, Fazenda Corumbá III and Fazenda Sertão	9500176578918 / 9500331295774
Size (ha); Coordinates	8,009	-56.58922, -12.97719
Land Clearance		
Period of clearing	05 Aug to 08 Dec2019	
Size (ha); Coordinates	283	-45.06184, -7.91665
Inside Forest Code protected areas	Yes	283 ha inside declared Legal Reserve and APP
Type of vegetation	Ombrophilous Dense Forest	
Legal Status		
Embargoes	No	-
Environmental fines	No	-
Natural Reserves	No	-
Indigenous Lands	No	-
Priority for biodiversity conservation	Very high	
Ownership		
Company group	no linked companies found	
Other linked properties	3 other properties totaling 3,620 ha. In Nossa Senhora do Livramento (MT): Fazenda Passárgada (1,940 ha). In Nova Mutum (MT): Gleba Matinhas (420 ha). In Juara (MT): Fazenda Sonho do Vô Gino (1,260 ha)	
Supply Chain		
Main commodity	Beef and Soy	
Confirmed supply chain relation	Yes	
Soy	Main traders in municipality	Amaggi (27%), Bunge (24%), Cargill (20%), Fiagril (11%), ADM (9%), COFCO (4%) and others (15%)
	Warehouses within 50 km radius	42 warehouses, e.g.: 2 owned by Tauá Biodiesel (80,000 MT) and 3 owned by Marapé Agropecuária (53,000 MT)
	Supply chain details	-
Beef	Main traders in municipality	JBS (91%), CP Comercial (3%), Minerva (1%) and others (5%)
	Slaughterhouses sourcing from municipality	8 different beef processors sourced cattle from Lucas do Rio Verde in 2019, e.g.: 1 owned by JBS (Dimantino), 1 owned by Naturafriq (Barra do Bugres), and 1 owned by Vale Grande (Nova Canaã do Norte)
	Supply chain details	Linked property Fazenda Passargada, in Nossa Senhora do Livramento (MT), indirectly supplied cattle to JBS (Barra do Garças and Diamantino), Minerva (Várzea Grande), and Marfrig (Tangará da Serra) through Fazenda Jaguar, in Nortelândia (MT), in 2018
Other supply chain details	-	

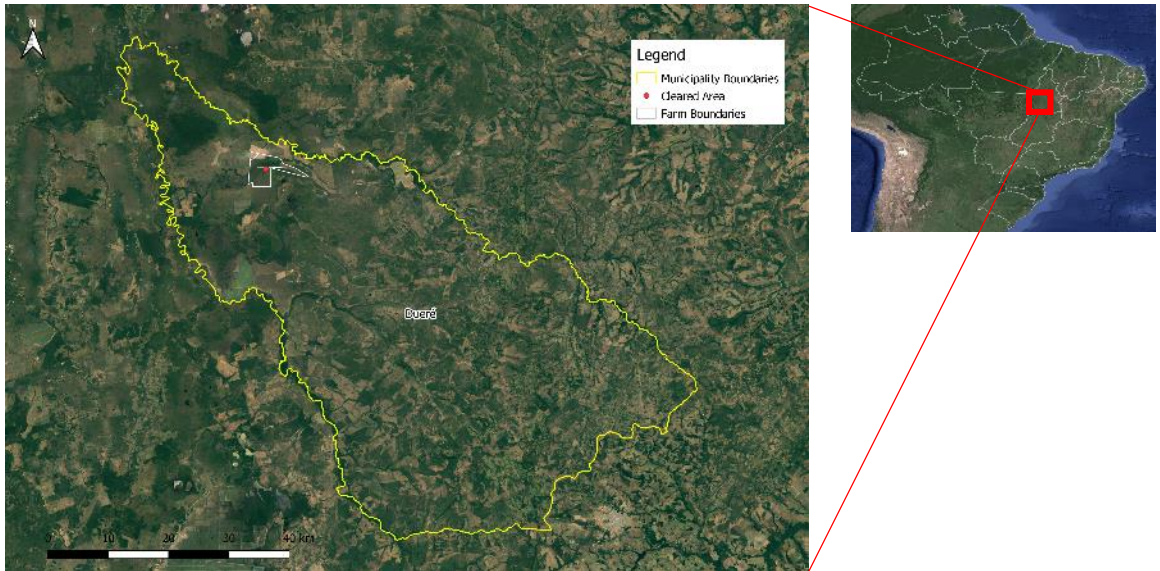
In 2010, the owner of Fazenda Corumbá I, II, and III and Fazenda Sertão signed an agreement with the Mato Grosso environmental agency for the restoration of native vegetation after the agency found environmental degradation in another property, Fazenda Sonho do Vô Gino in Juara (MT) (1).

In 2004, a company linked to the owner of the farm in this case, Jamad Indústria de Madeiras (currently not operating), was prosecuted by the Mato Grosso state attorney for illegal deforestation in a preservation area in São José do Rio Claro (MT) (2).

(1) <https://www.jusbrasil.com.br/diarios/28223693/pg-44-diario-oficial-do-estado-do-mato-grosso-doemt-de-15-12-2010>

(2) <https://www.jusbrasil.com.br/diarios/30731814/pg-282-diario-de-justica-do-estado-do-mato-grosso-djmt-de-20-09-2011>

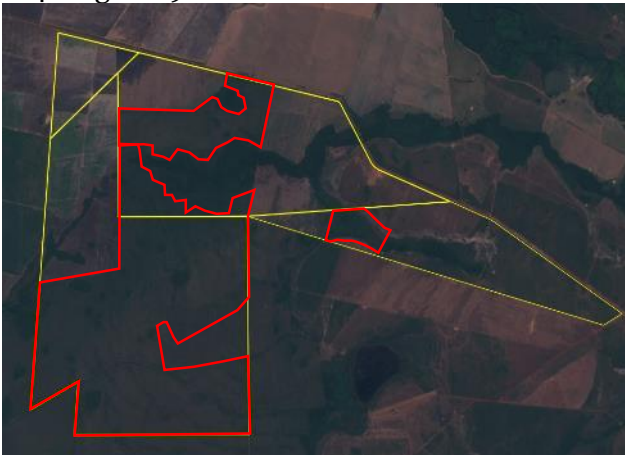
Property Location



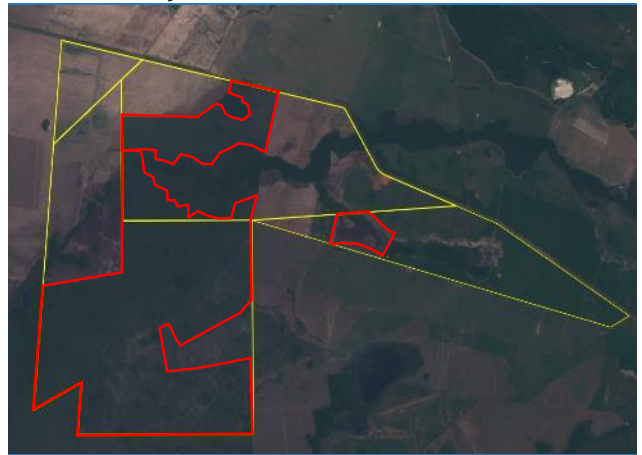
Yellow border – boundary of Dueré (Tocantins) / White border – boundary of Fazenda Tingui and Fazenda Remansão / Red dot – location of cleared area

Alert Imagery (before and after clearance)

04-Aug-2019

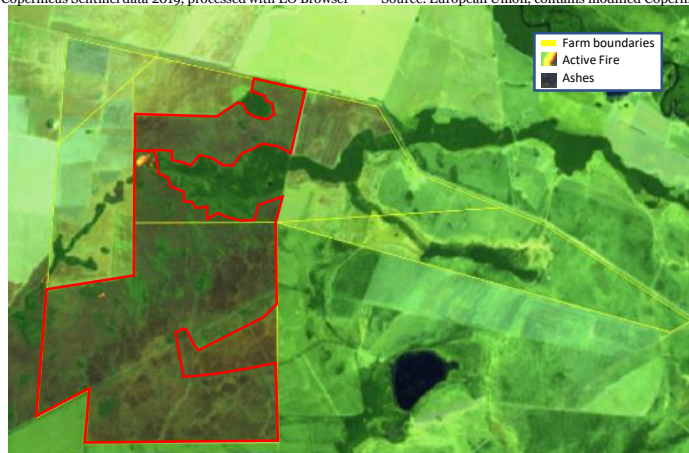


12-Nov-2019



Source: European Union, contains modified Copernicus Sentinel data 2019, processed with EO Browser

Source: European Union, contains modified Copernicus Sentinel data 2019, processed with EO Browser



Source: European Union, contains modified Copernicus Sentinel data 2019, processed with EO Browser

5. Fazenda Tingui / Fazenda Remansão Dueré (Tocantins)

General Information		
Property; Registry	Fazenda Tingui / Fazenda Remansão	433632940 / 431261448
Size (ha); Coordinates	2,683	-49.56423, -11.20017
Land Clearance		
Period of clearing	04 Aug to 12 Nov 2019	
Size (ha); Coordinates	1,033	-49.58090, -11.19808
Inside Forest Code protected areas	Yes	1,021 ha inside declared Legal Reserve and APP
Type of vegetation	Savanna Park	
Legal Status		
Embargoes	No	-
Environmental fines	No	-
Natural Reserves	No	-
Indigenous Lands	No	-
Priority for biodiversity conservation	No	
Ownership		
Company group	Agropecuária Quarain, Madeireira Remansão and Ciacel - Comércio, Indústria e Armazenamento de Cereais	
Other linked properties	7 bordering properties totaling 7,853 ha. In Dueré (TO): Fazenda Quarain (1,460 ha), 5 other parcels of Fazenda Remansão (6,273 ha), and another parcel of Fazenda Tingui (120 ha)	
Supply Chain		
Main commodity	Multiple	
Confirmed supply chain relation	No	
Soy	Main traders in municipality	Domestic consumption (100%)
	Warehouses within 50 km radius	29 warehouses, e.g.: 2 owned by Marcelo Pedro de Moraes (54,000 MT), 3 owned by Lagovalle - Cooperativa Industrial do Vale da Lagoa (32,000 MT) and 2 owned by Xavante Agroindustrial (16,000 MT)
	Supply chain details	-
Beef	Main traders in municipality	Cooperativa de Produtores de Carne e Derivados de Gurupi (76%) and Boi Brasil (24%)
	Slaughterhouses sourcing from municipality	no data on beef processors sourcing cattle from Dueré
	Supply chain details	-
Other supply chain details	-	

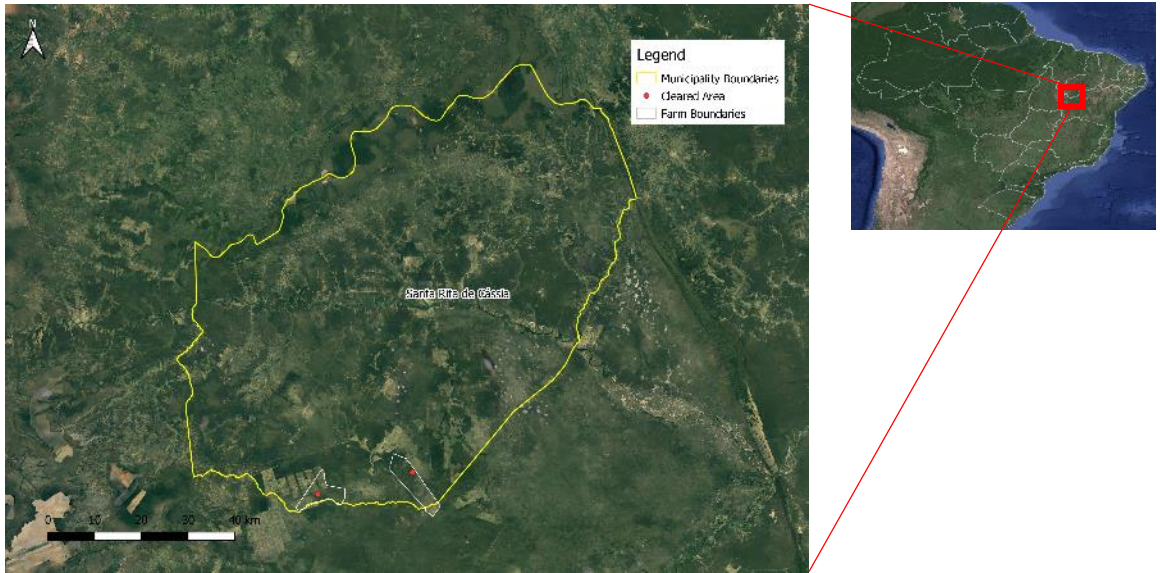
The owner of Fazenda Tingui, Luiz Carlos Dal Molin, signed three agreements with environmental agencies to address environmental degradation in his properties. In 2011, he signed a TAC with the Federal environmental agency, IBAMA (1) for environmental degradation in a property in Pedro Afonso (Tocantins) (2). In 2013 (3) and 2014 (4) he signed another two agreements with the Tocantins environmental agency.

Near Fazenda Tingui, there is a settlement named “Loroty” or “Capão do Côco,” where Krahô-Kanela indigenous people were relocated after some conflicts linked to the territory claimed by them in the bordering municipality of Lagoa da Confusão (5). After decades of claims, they are still waiting for their territorial rights to be guaranteed.

The Dal Molin family is also active in agribusiness activities in Amambaí (Mato Grosso do Sul) through their other company, Ciacel. Ari Dionísio Dal Molin, one of the partners of Ciacel, was president of two major wheat cooperatives in Rio Grande do Sul: Centralsul and Fecotrigo. In 1983, Brazil’s Central Bank prohibited Ari from operating rural credits after having 200 million USD in debts (6). Ari was the former owner of Fazenda Sarandi, in Nonoáí (RS), whose occupation by landless workers in the 1970s inspired the creation of the Movement of Rural Landless Workers (MST) in 1985 (7).

- (1) <https://www.jusbrasil.com.br/diarios/33205879/dou-secao-3-15-12-2011-pg-290>
- (2) <https://servicos.ibama.gov.br/ctf/publico/areasembargadas/ConsultaPublicaAreasEmbargadas.php>
- (3) <https://www.jusbrasil.com.br/diarios/49931156/doeto-17-01-2013-pg-50>
- (4) <https://www.escavador.com/diarios/389558/DOETO/P/2014-12-02?page=47>
- (5) <http://www.dhnet.org.br/w3/cdhcto/indio/funai.html>
- (6) <https://books.google.com.br/books?id=evurDwAAQBAJ&pg=PT251&lpg=PT251&dq=Ari+Dion%C3%ADsio+Dalmolin&source=bl&ots=5Ap7j8amq0&sig=ACfU3UoMtItMPBC1VB-G517T51QbXevU1w&hl=pt-BR&sa=X&ved=2ahUKEwid-cLm9fnmAhVZD7kGHXhcBk44ChDoATAAegQICRAB#v=onepage&q=Ari%20Dion%C3%ADsio%20Dalmolin&f=false>
- (7) <https://mst.org.br/2019/08/29/artigo-acampamento-na-fazenda-sarandi-vira-simbolo-de-resistencia/>

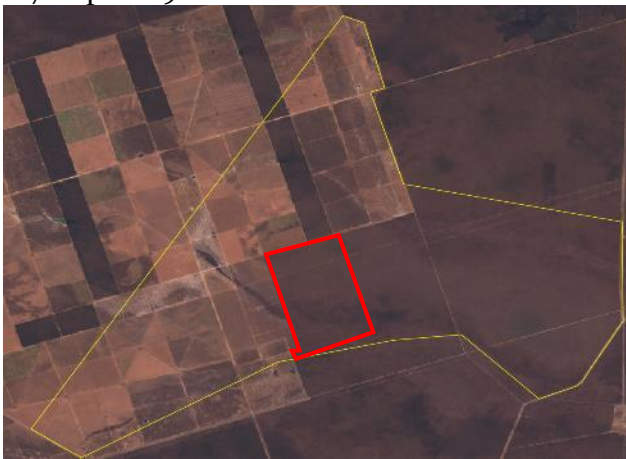
Property Location



Yellow border – boundary of Santa Rita de Cássia (Bahia) / White border – boundary of Fazenda Novale / Red dot – location of cleared area

Alert Imagery (before and after clearance)

07-Sep-2019



21-Dec-2019



Source: European Union, contains modified Copernicus Sentinel data 2019, processed with EO Browser

Source: European Union, contains modified Copernicus Sentinel data 2019, processed with EO Browser

6. Fazenda Novale

Santa Rita de Cássia (Bahia)

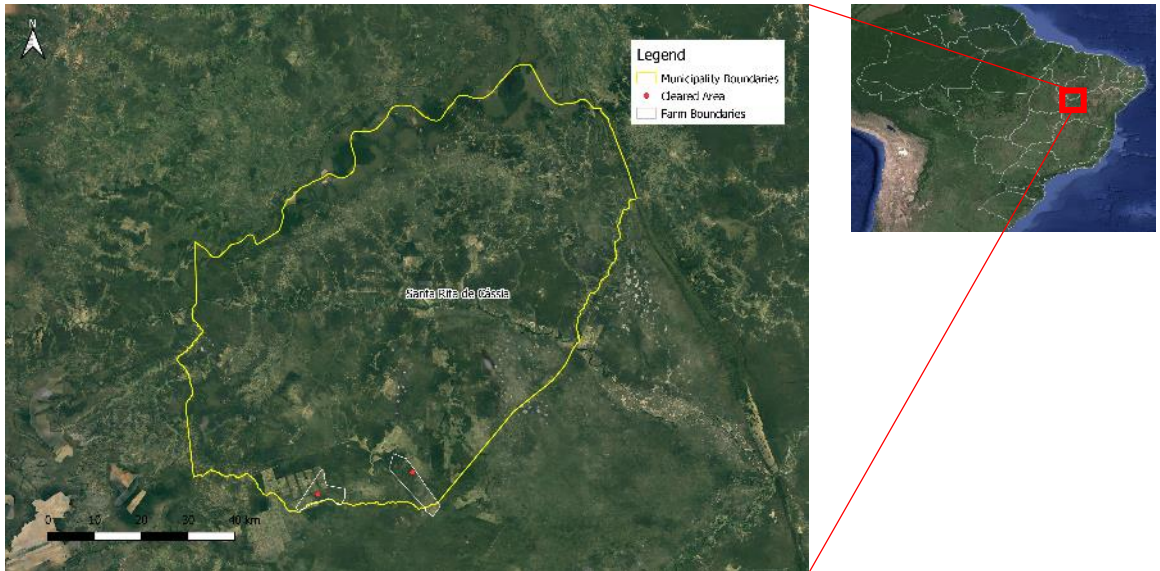
General Information		
Property; Registry	Fazenda Novale	3011080077907
Size (ha); Coordinates	3,915	-44.72559, -11.38593
Land Clearance		
Period of clearing	07 Sep to 21 Dec 2019	
Size (ha); Coordinates	289	-44.73109, - 11.38747
Inside Forest Code protected areas	No	--
Type of vegetation	Forested Savanna	
Legal Status		
Embargoes	No	-
Environmental fines	No	-
Natural Reserves	No	-
Indigenous Lands	No	-
Priority for biodiversity conservation	No	
Ownership		
Company group	Agropecuária A. Manjabosco, Agropecuária Mariana Manjabosco and Alvorada Sistemas Agrícolas, originally from Santa Rosa, Rio Grande do Sul (Southern Brazil)	
Other linked properties	4 other properties totaling 16,461 ha. In Riachão das Neves (BA): Fazenda Santa Maria (3,335 ha), Fazenda Santa Maria II (1,830 ha) and Fazenda Santa Marta (1,246 ha). In Formosa do Rio Preto (BA): Fazenda Triunfo (10,050 ha)	
Supply Chain		
Main commodity	Multiple	
Confirmed supply chain relation	No	
Soy	Main traders in municipality	Gavillon (46%), Copalem (3%) and domestic consumption (51%)
	Warehouses within 50 km radius	6 warehouses, e.g.: 1 owned by Bunge (83,000 MT)
	Supply chain details	-
Beef	Main traders in municipality	JBS (100%)
	Slaughterhouses sourcing from municipality	8 different regional beef processors sourced cattle from Santa Rita de Cássia in 2017, all located in Bahia
	Supply chain details	Direct supplier to Frigorífico Vale do Sol (Jequié), Frigorífico Regional de Barreiras (Barreiras), Frigorífico Muquém de São Francisco (Muquém de São Francisco,) and Confrigo Frigorífico (Vitória da Conquista) between 2014 and 2017
Other supply chain details	In 2014, Fazenda Triunfo supplied corn to Asa indústria e Comércio in Pernambuco	

Fazenda Novale (Santa Rita de Cássia, Bahia) and Fazenda Triunfo (Formosa do Rio Preto, Bahia) are part of the owner's family business, which integrates cattle, soy, and timber production (1) in Western Bahia. In 2015, the family's cattle business included 2,500 animals with an expectation to double the livestock total in the following years (2). A family member is a partner of the Cooperativa dos Produtores Rurais da Bahia (Cooperfarms), present also in Goiás and Tocantins states (3). The family also owns a company that officially represents the John Deere brand in Rio Grande do Sul (4).

In November 2019, Agropecuária A. Manjabosco and Agropecuária Mariana Manjabosco were investigated as part of a federal police operation, Avati, which resulted in the companies' prosecution for tax fraud (totaling BRL 6.5 million), money laundering and criminal association together with other groups and landowners (5).

- (1) <https://revistagloborural.globo.com/Integracao/noticia/2016/04/integracao-da-opcao-de-renda-e-ameniza-riscos.html>
- (2) <https://www.dinheirorural.com.br/secao/agronegocios/fantastica-fabrica-de-touros>
- (3) <https://www.consultasocio.com/q/sa/eduardo-antonio-manjabosc>
- (4) http://www.alvorada-rs.com.br/content/about_us
- (5) <https://www.correio24horas.com.br/noticia/nid/empresas-ligadas-ao-agronegocio-sao-suspeitas-de-sonegar-r-20-milhoes-na-bahia/>

Property Location



Yellow border – boundary of Santa Rita de Cássia (Bahia) / White border – boundary of Fazenda Piracicaba / Red dot – location of cleared area

Alert Imagery (before and after clearance)

07-Sep-2019



21-Dec-2019



Source: European Union, contains modified Copernicus Sentinel data 2019, processed with EO Browser

Source: European Union, contains modified Copernicus Sentinel data 2019, processed with EO Browser

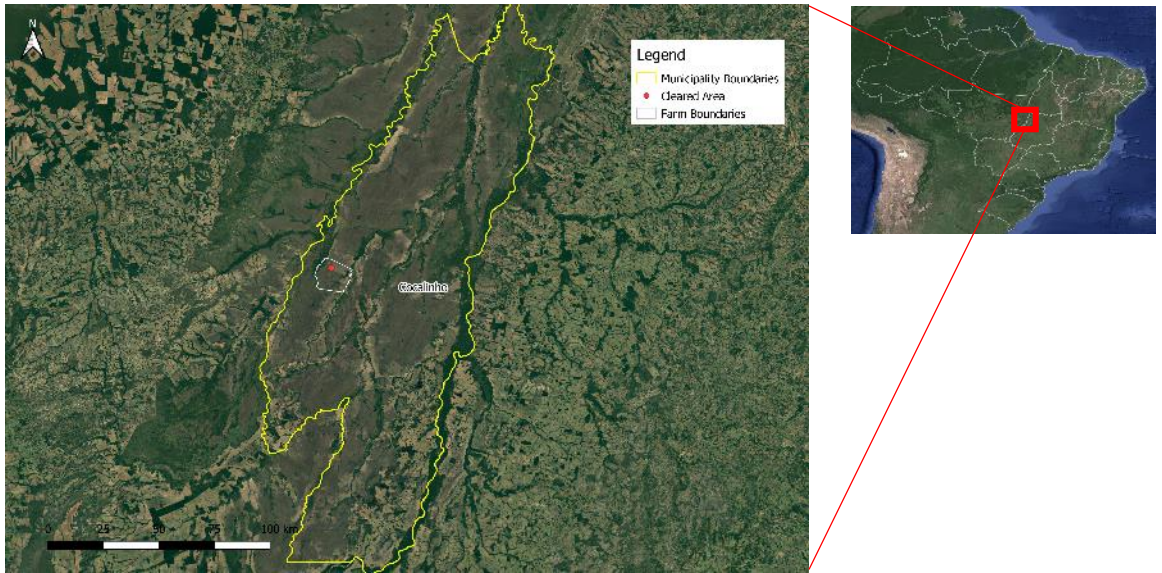
7. Fazenda Piracicaba Santa Rita de Cássia (Bahia)

General Information		
Property; Registry	Fazenda Piracicaba	3010603081613
Size (ha); Coordinates	5,243	-44.54460, -11.36682
Land Clearance		
Period of clearing	07 Sep to 21 Dec 2019	
Size (ha); Coordinates	205	-44.54662, -11.34496
Inside Forest Code protected areas	No	-
Type of vegetation	Forested Savanna	
Legal Status		
Embargoes	No	-
Environmental fines	No	-
Natural Reserves	No	-
Indigenous Lands	No	-
Priority for biodiversity conservation	No	
Ownership		
Company group	Family group owns a building supply shop in Paulo Afonso, Bahia, and distribution companies in Bahia, Alagoas and Sergipe (baverage, coffe and gas)	
Other linked properties	2 other properties totaling 1,031 ha. In Santa Rita de Cássia (BA): Fazenda Vitória (906 ha). In Riachão das Neves (BA): Fazenda Sabiá (125 ha)	
Supply Chain		
Main commodity	Soy	
Confirmed supply chain relation	No	
Soy	Main traders in municipality	Gavillon (46%), Copalem (3%) and domestic consumption (51%)
	Warehouses within 50 km radius	3 warehouses, e.g.: 2 warehouses owned by Leandro Volter Laurindo de Castilhos (4,900 MT) and 1 owned by Osvino Ricardi (unknown capacity)
	Supply chain details	-
Beef	Main traders in municipality	JBS (100%)
	Slaughterhouses sourcing from municipality	8 different regional beef processors sourced cattle from Santa Rita de Cássia in 2017, all located in Bahia
	Supply chain details	-
Other supply chain details	-	

Part of Fazenda Piracicaba (around 4,320 ha) is under ownership dispute between the Onias Silva family and Equatorial Transmissora, an energy supply company, and the court has not yet resolved the case (1). Onias Silva is a family of politicians from Juazeiro, Bahia (2). They have family links with Misael Aguilar Silva Neto, a former state deputy in Bahia (2007-2011) (3), and with Misael Aguilar Silva Júnior, former mayor of Juazeiro, Bahia. Misael Aguilar Silva Júnior was condemned in 2011 to return BRL 90,000 to the mayor's office because these funds were inappropriately given to private entities, including the Trade & Agriculture Association of Juazeiro (4).

- (1) <https://www.jusbrasil.com.br/processos/213797492/processo-n-8000393-4820188050224-do-tjba>
- (2) <http://www.araujo.eti.br/depend.asp?numPessoa=13654&dir=genxdir/>
- (3) <https://www.al.ba.gov.br/deputados/ex-deputado-estadual/910647>
- (4) <https://www.correio24horas.com.br/noticia/nid/ex-prefeito-de-juazeiro-e-condenado-a-devolver-cerca-de-r-90-mil-aos-cofres-da-cidade/>

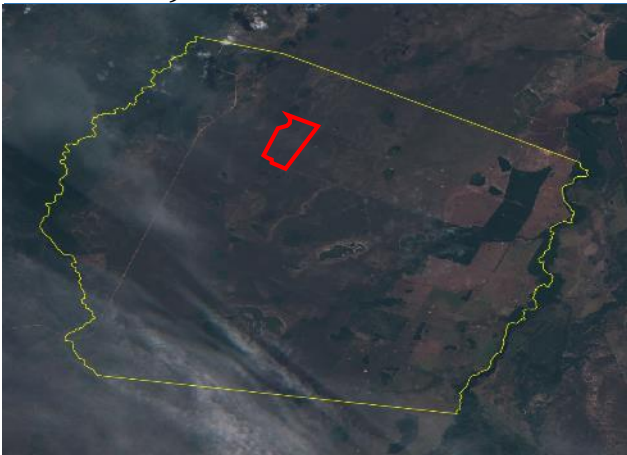
Property Location



Yellow border – boundary of Cocalinho (Mato Grosso) / White border – boundary of Fazenda São Domingos (Cobiçada - Gleba 1/1A) / Red dot – location of cleared area

Alert Imagery (before and after clearance)

06-Jun-2019



02-Dec-2019



Source: European Union, contains modified Copernicus Sentinel data 2019, processed with EO Browser

Source: European Union, contains modified Copernicus Sentinel data 2019, processed with EO Browser

8. Fazenda São Domingos (Cobiçada Gleba 1/1A) Cerrado biome

Cocalinho (Mato Grosso)

General Information			
Property; Registry	Fazenda São Domingos (Fazenda Cobiçada Gleba 1/1A)		9050701022610
Size (ha); Coordinates	19,016	-51.42701, -13.79318	
Land Clearance			
Period of clearing	06 Jun to 02 Dec 2019		
Size (ha); Coordinates	192	-51.43153, -13.75883	
Inside Forest Code protected areas	No	-	
Type of vegetation	Forested Savanna		
Legal Status			
Embargoes	Yes	Clearance of 210 ha without authorization (2016)	
Environmental fines	Yes	2 fines for environmental degradation (September 2019)	BRL 556,000
Natural Reserves	No	-	
Indigenous Lands	Yes	Overlapping TI Wedezé (Xavante)	
Priority for biodiversity conservation	No		
Ownership			
Company group	no linked companies found		
Other linked properties	3 other properties, not possible to check total size. In Cocalinho (MT): Fazenda Jussara, Fazenda Cobiçada I and Fazenda Cobiçada II		
Supply Chain			
Main commodity	Beef		
Confirmed supply chain relation	Yes		
Soy	Main traders in municipality	Gavillon (41%) and domestic consumption (59%)	
	Warehouses within 50 km radius	No warehouses within 50 km radius, but 39 warehouses within 100 km radius, e.g.: 2 owned by Caramuru Alimentos (135,000 MT), 3 owned by Cargill (120,000 MT), 2 owned by Louis Dreyfus (115,000 MT), 1 owned by COFCO (67,000 MT) and 1 owned by Bunge (59,000 MT)	
	Supply chain details	-	
Beef	Main traders in municipality	JBS (91%), Minerva (2%), Marfrig (2%) and others (5%)	
	Slaughterhouses sourcing from municipality	Indirect supplier to JBS (Água Boa, Barra do Garças and Confresa) through Fazenda Amparo and Fazenda Água Preta in Cocalinho (MT), both owned by Agropecuária Água Preta, in 2018 and 2019	
	Supply chain details	-	
Other supply chain details	-		

The owner of Fazenda Cobiçada (Gleba 1 and 1A) also owns nine companies in Goiás with a total equity of BRL 80 million (1). The same owner is linked to other farms in Cocalinho (Fazenda Cobiçada I, Fazenda Cobiçada II and Fazenda Jussara). Although we found three embargoed areas linked to the farms Cobiçada I and II, it was not possible to confirm a connection between these embargoes and Fazenda São Domingos (Cobiçada Gleba 1 and 1A).

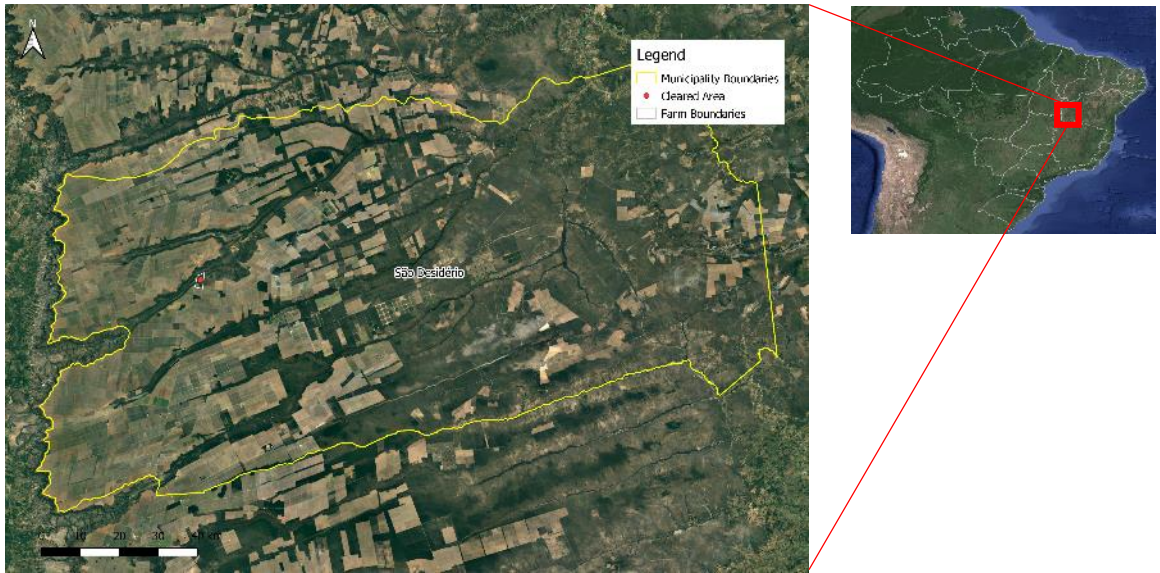
In 2011, one of the companies linked to Fazenda Cobiçada Gleba 1 and 1A was part of a court case involving the former mayor of Goiânia, Íris Rezende. The prosecution was linked to the acquisition of an under-priced area by the municipality of Goiânia resulting in a loss to the public finances (2). The owner of Fazenda Cobiçada is affiliated with the Sindicato Rural de Cocalinho (3).

(1) <https://www.consultasocio.com/q/sa/claudsonor-rodrigues-fernandes>

(2) <https://mp-go.jusbrasil.com.br/noticias/2857633/mp-aciona-ex-prefeito-e-empresa-por-improbidade-na-permuta-de-area-publica>

(3) <http://www.cocalinhorural.com.br/cocalinhorural/associados.php>

Property Location



Yellow border – boundary of São Desidério (Bahia) / White border – boundary of Fazenda Santana I / Red dot – location of cleared area

Alert Imagery (before and after clearance)

02-Oct-2019



Source: European Union, contains modified Copernicus Sentinel data 2019, processed with EO Browser

21-Dec-2019



Source: European Union, contains modified Copernicus Sentinel data 2019, processed with EO Browser



Source: European Union, contains modified Copernicus Sentinel data 2019, processed with EO Browser

General Information		
Property; Registry	Fazenda Santana I	2290400399854
Size (ha); Coordinates	690	-45.94458, -12.80264
Land Clearance		
Period of clearing	02 Oct to 21 Dec 2019	
Size (ha); Coordinates	128	-45.94369, -12.79867
Inside Forest Code protected areas	No	- -
Type of vegetation	Woody-grass Savanna	
Legal Status		
Embargoes	No	-
Environmental fines	No	-
Natural Reserves	No	-
Indigenous Lands	No	-
Priority for biodiversity conservation	No	
Ownership		
Company group	no linked companies found	
Other linked properties	1 bordering property in São Desidério (BA): Fazenda São Geraldo (174 ha)	
Supply Chain		
Main commodity	Beef and Soy	
Confirmed supply chain relation	No	
Soy	Main traders in municipality	ADM (23%), Multigrain (17%), Bunge (11%), Amaggi & LD Commodities (9%), Cargill (8%), COFCO (4%), others (1%) and domestic consumption (27%). In 2017, ranked 2nd in soy production in Brazil and 1st in Bahia
	Warehouses within 50 km radius	135 warehouses, e.g.: 3 owned by Bunge (126,00 MT) and 2 owned by Cargill (45,000 MT)
	Supply chain details	-
Beef	Main traders in municipality	JBS (100%)
	Slaughterhouses sourcing from municipality	3 different regional beef processors sourced cattle from São Desidério in 2017: 1 in Muquém do São Francisco, 1 in Barreiras and 1 in Brumado, all in Bahia
	Supply chain details	Linked property Fazenda São Geraldo, in São Desidério (BA), directly supplied cattle for fattening to 3 farms in Bahia in 2016 and 2017
Other supply chain details	-	

In 2015, the state environmental agency of Bahia authorized the conversion of 600 hectares of native vegetation in Fazenda Santana I for agricultural activities (1).

The owner of Fazenda Santana I is affiliated with the Association of Irrigators of Bahia (AIBA) (2). The family owns a building supply shop in Aparecida de Goiânia (Goiás) (3) and petrol stations in Western Bahia. In 2013, the owner of Fazenda Santana I caused a car accident that killed two people in São Desidério, Bahia (4), and the corresponding court case continues nearly seven years later.

- (1) <http://portaldatransparencia.com.br/prefeitura/saodesiderio/?pagina=abreDocumento&arquivo=31ED04598C4D>
- (2) <https://aiba.org.br/wp-content/uploads/2016/01/informaiba-Janeiro-2016-1.pdf>
- (3) <https://www.consultasocio.com/q/sa/leonidas-fernandes-lima>
- (4) <http://www.infosaodesiderio.com/2013/09/empresario-responsavel-por-tragedia.html>

Glossary

Deforestation and land clearance - Any land use change already classified as loss of native vegetation by deforestation alert systems

Agrarian conflicts - Include conflicts on land tenure, for natural resources (water, forests), slave labor, other crimes, and human right issues

Embargoed areas - Areas where any kind of activity is suspended or not authorized by the Federal Environmental Agency (IBAMA) due to environmental degradation or irregularity

Environmental fines - List of environmental infractions that resulted in fines addressed to the owner of the property where the crimes were found

Forest Code protected areas - Areas defined by the Brazilian Forest Code that have mandatory conservation status in private properties. *Legal Reserves* [80% (Amazonia biome), 35% (Cerrado biome inside Legal Amazon), 20% other areas] and *Permanent Preservation Areas (APP)* linked to water and soil conservation (close to river bases, wetlands, slopes, and high hills). The Legal Reserve and APP areas considered in this report are those self-declared within the Environmental Register System “Cadastro Ambiental Rural – CAR”. In some cases, the CAR was also used to find information on ownership because even if it is a self-declared document, sometimes, it provides the most recent information on the probable ownership of a property.

Illegal deforestation - Any deforestation event happening without an authorization of the state or federal environmental agency or those that are inside a Legal Reserve or a Permanent Preservation Area (APP)

Natural Reserves - Officially recognized Natural Reserves areas according to the National System of Natural Reserves (SNUC – Sistema Nacional de Unidades de Conservação). The SNUC determines who administrates the area - federal, state or local government, or private owner -, and how the natural resources may be used by whom in each of the natural reserves’ categories.

Indigenous lands - Lands under FUNAI (Nacional Foundation for Indigenous People) administration defined as a heritage right of local Indigenous populations where any activity not linked to these groups are not allowed.

Priority for Biodiversity conservation - Brazilian Ministry of Environment (MMA) study listing the Biodiversity hotspots in Brazil and the priority of actions for biodiversity conservation in these areas.

* * * *

The Rapid Response program has received support, in part, from the International Climate and Forest Initiative (NICFI) scheme managed by the Norwegian Agency for Development Cooperation (Norad). This report does not necessarily reflect the standpoints of Norad.

The work of Mighty Earth is supported by Waxman Strategies. Waxman Strategies’ work on forest conservation is funded in part by Aidenvironment. Waxman is required under 22 U.S.C. § 614 to disclose that this material is distributed on behalf of the aforementioned organization, working under grant from the Norwegian Agency for Development Cooperation. Additional information is on file with the Department of Justice, Washington, D.C.