



MIGHTY EARTH

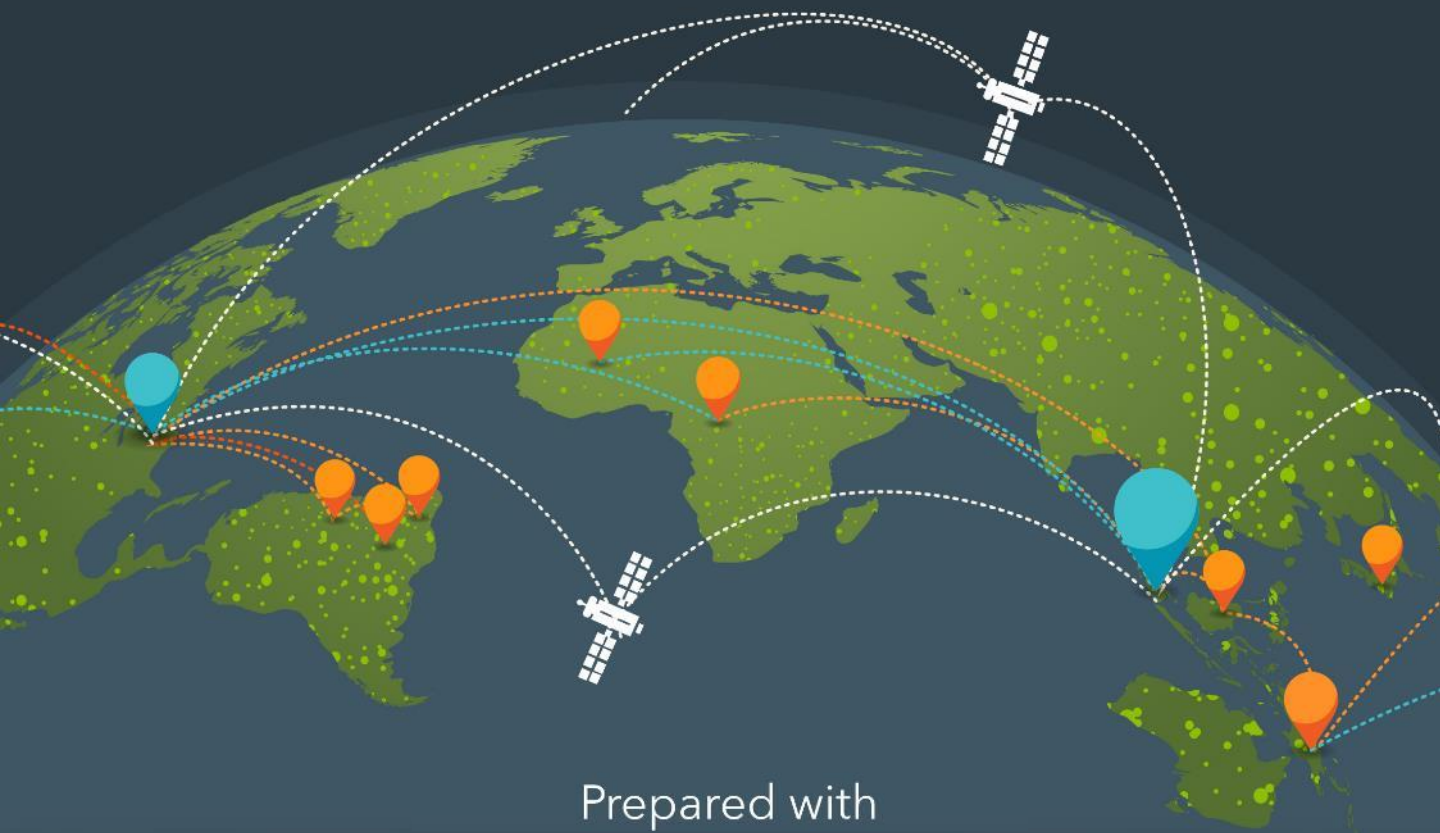


RAPID RESPONSE

Soy & Cattle Report

Report 7

November 2019



Prepared with

aidenvironment
Waxman

Executive Summary

This report presents 12 cases of land clearing based on alerts data from DETER (System for Monitoring Deforestation on Real Time) and PRODES (Program for Deforestation Calculation) observed between 27 August 2019 and 26 September 2019, in the Brazilian Amazon and Cerrado biomes. Land clearing alerts considered in this report were visually confirmed. Eight of the selected cases are in the Amazon biome, and four are in the Cerrado biome.

Cleared land per municipality of all cases included in this report (in hectares)

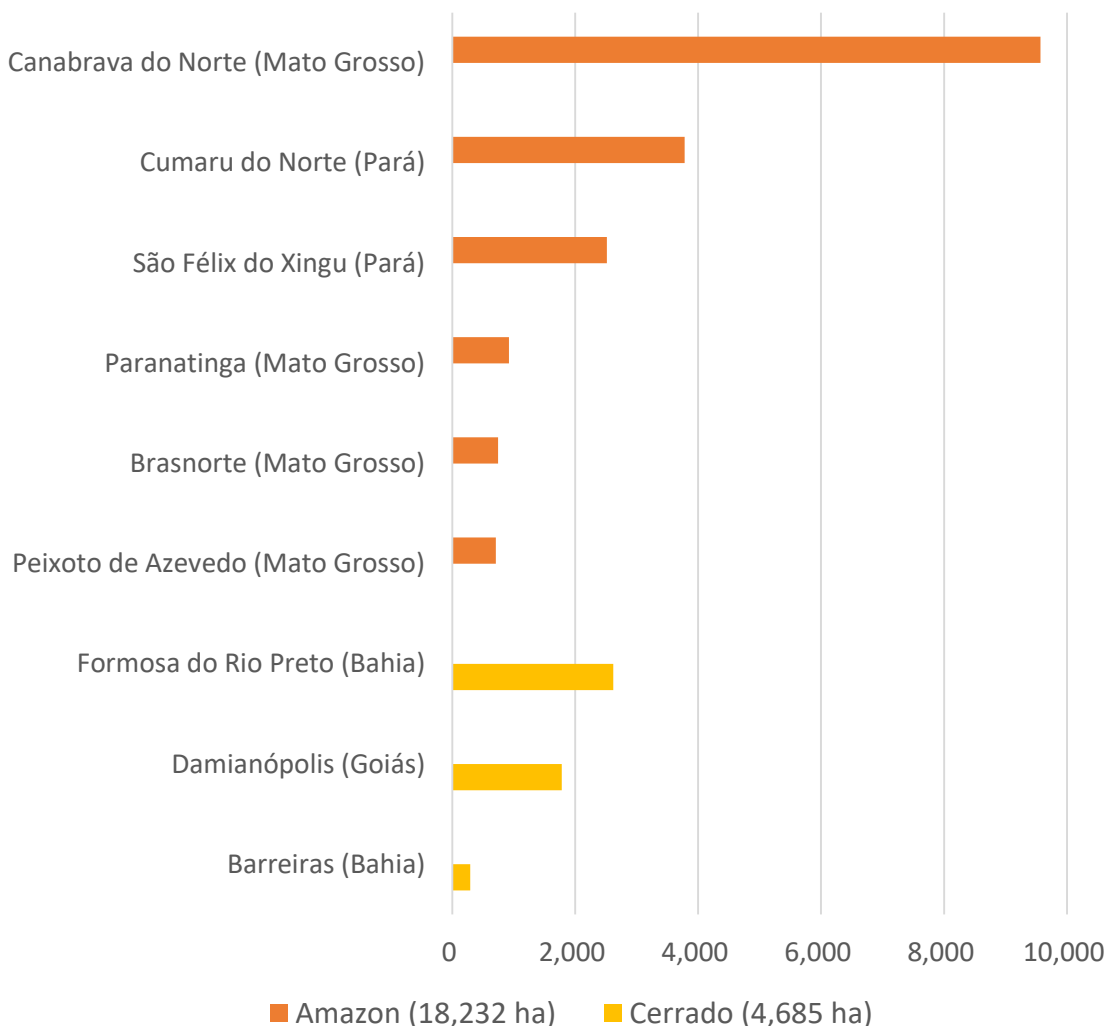


Table of Contents

Amazon Biome

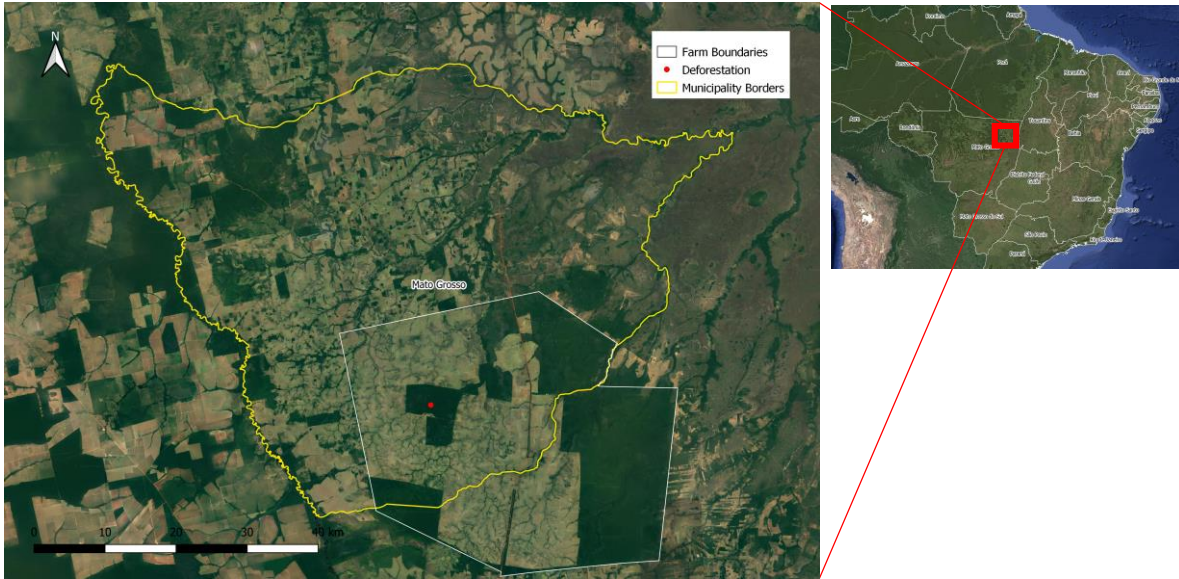
1. Fazenda Rio Preto I e II – Canabrava do Norte (Mato Grosso)	4
2. Fazenda Rio Dourado – Cumaru do Norte (Pará)	7
3. Fazenda Nossa Senhora da Medalha – São Félix do Xingu (Pará)	10
4. Fazenda Cabocla – Cumaru do Norte (Pará)	12
5. Fazenda Brusque do Xingu – São Félix do Xingu (Pará)	15
6. Fazenda Macuco – Paranatinga (Mato Grosso)	18
7. Fazenda Nove de Julho – Brasnorte (Mato Grosso)	20
8. Fazenda São José I – Peixoto de Azevedo (Mato Grosso)	23

Cerrado Biome

9. Fazenda Santa Maria Gleba 02 and Fazenda Santa Maria Gleba 03 – Formosa do Rio Preto (Bahia)	25
10. Fazenda Grotão – Damianópolis (Goiás)	28
11. Fazenda Santa Maria d’Oeste 14 – Formosa do Rio Preto (Bahia)	30
12. Fazenda Espírito Santo – Barreiras (Bahia)	32

1. Fazenda Rio Preto I e II (Canabrava do Norte, Mato Grosso)

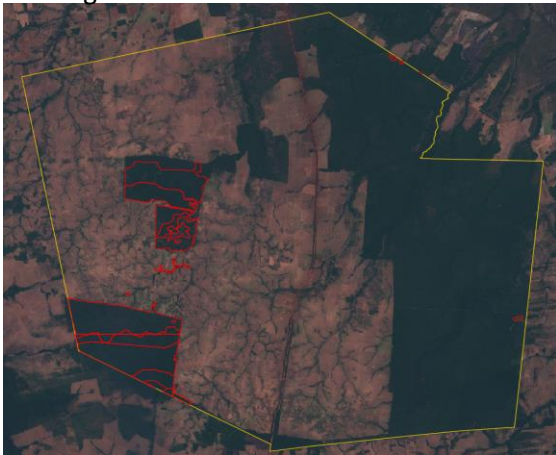
Property Location



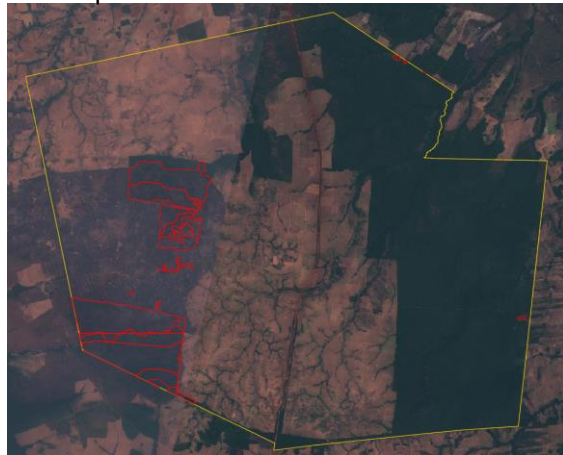
Yellow border – boundary of Canabrava do Norte (Mato Grosso) / White border – boundary of Fazenda Rio Preto I e II / Red dot – location of cleared area

Alert Imagery (before and after clearance)

04-Aug-19



21-Sep-19



1. Fazenda Rio Preto I e II (Canabrava do Norte, Mato Grosso)

General Information			
Property; Registry	Fazenda Rio Preto I e II		9010830134717
Size (ha); Coordinates	143,853	-51.68664, -11.41759	
Land Clearance			
Period of clearing	04 Aug to 21 Sep 2019		
Size (ha); Coordinates	9,570	-51.79134, -11.37703	
Inside Forest Code protected areas	Yes	741 ha inside declared APP	
Type of vegetation	Semidecidual Seasonal Forest		
Legal Status			
Embargoes	No	-	
Environmental fines	Yes	Clearing by fire of 121 ha without authorization in 2016	BRL 12,097,000
Natural Reserves	No	-	
Indigenous Lands	Yes	Bordering TI Maraiwatsede (Xavante)	
Priority for biodiversity conservation	Extremely high		
Ownership			
Company group	Agropecuária Nacional Ltda		
Other linked properties	4 farms - total area unknown. in Turvânia (GO): Fazenda Califórnia and Fazenda Califórnia Confinamento. In Anicuns (GO): Fazenda Califórnia and São Domingos da Boa Esperança (5,288 ha). In São Félix do Araguaia (MT): Fazenda Rio Preto		
Supply Chain			
Main commodity	Multiple		
Confirmed supply chain relation	Yes		
Soy	Main traders in municipality	Aliança Agrícola do Cerrado (65%); Novaagri (35%)	
	Warehouses within 50 km radius	12 warehouses, e.g.: 2 owned by Amaggi (170,000 MT)	
	Supply chain details	-	
Beef	Main traders in municipality	JBS (85%); Marfrig (7%); CP Comercial (3%); others (5%)	
	Slaughterhouses sourcing from municipality	5 slaughterhouses in Mato Grosso and São Paulo, including: 2 owned by JBS in Mato Grosso (Água Boa and Confresa); 2 owned by Marfrig in Mato Grosso (Paranatinga and Nova Xavantina)	
	Supply chain details	Indirect supply to JBS in Confrea (2019) through Fazenda Três Cores (Confresa) and to Minerva in Palmeiras de Goiás (2018) through Fazenda Califórnia Confinamento (Turvânia)	
Other supply chain details	-		

1. Fazenda Rio Preto I e II (Canabrava do Norte, Mato Grosso)

NASA detected fires inside the farms Fazenda Rio Preto I e II on September 8, 2019 that spread into adjacent Indigenous Reserve IT Maraiwatsede five days later (1), destroying roughly 1,000 hectares of native vegetation inside the reserve. Total native vegetation clearance within Fazenda Rio Preto I e II reached 9,570 ha between August 4 and September 21, 2019. The farms are not declared in the Rural Environmental Registry (CAR) (2), and as such will not be screened by companies who rely on the CAR as a source for their monitoring systems.

Cattle from Fazenda Rio Preto were transferred to JBS's slaughterhouse in Confrea, Mato Grosso in 2019 via Fazenda Tres Cores (3). Cattle is also moved between the Fazenda Rio Preto farms and other farms under the same ownership, for instance to Fazenda California Confinamento that directly supplied to Minerva (Palmeiras De Goiás - GO and José Bonifácio - SP) in 2018 and 2019 and Mataboi Alimentos Ltda (Araguari - MG) in 2018.

The Fazenda Rio Preto farms are a known supplier of JBJ Agropecuária Ltda (3), a beef company established by the eldest brother of the family that owns JBS (4). JBJ farms are an important local JBS supplier.

The owner of the Rio Preto farms is allegedly linked to numerous environmental and social crimes. For instance, in 2004, 18 workers were rescued from slave labor conditions in Fazenda Rio Preto (5). In 2009, the Federal Police accused the owner of being involved in land grabbing (grigalem) in Araguaia region, including within the Natural Reserve Maraiwatsede (6). In addition, he was accused by federal prosecutors in Operação Pluma of contracting lawyers to illegally grab land (7).

(1) https://firms.modaps.eosdis.nasa.gov/active_fire/#firms-shapefile

(2) <https://monitoramento.sema.mt.gov.br/simcar/tecnico.app/publico/car>

(3) cattle transfer data

(4) <http://jbjagropecuaria.com.br/>

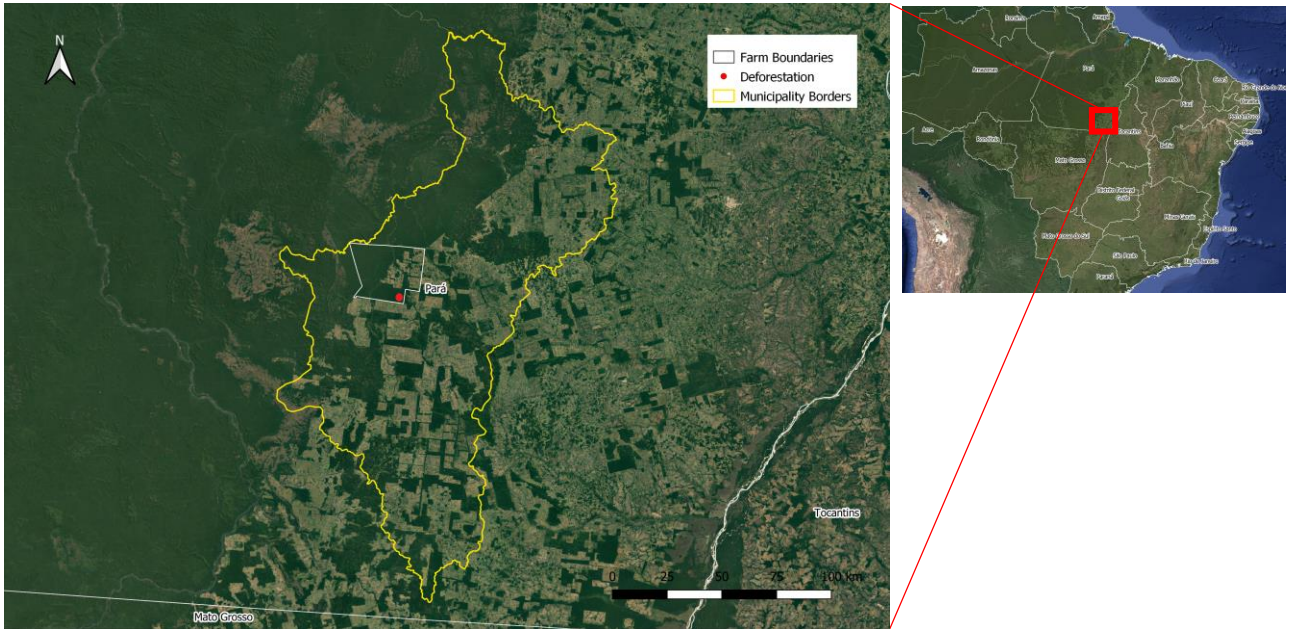
(5) <https://reporterbrasil.org.br/2007/05/nove-condenacoes-somam-mais-de-10-milhoes-de-reais/>

(6) <https://www.olhardireto.com.br/noticias/exibir.asp?id=35122¬icia=entenda-quem-era-quem-no-esquema-de-grilagem-praticado-no-araguaia>

(7) <https://www.rdnews.com.br/ultimas/pecuarista-contrata-advogados-para-desapropriar-terra/15694>

2. Fazenda Rio Dourado (Cumaru do Norte, Pará)

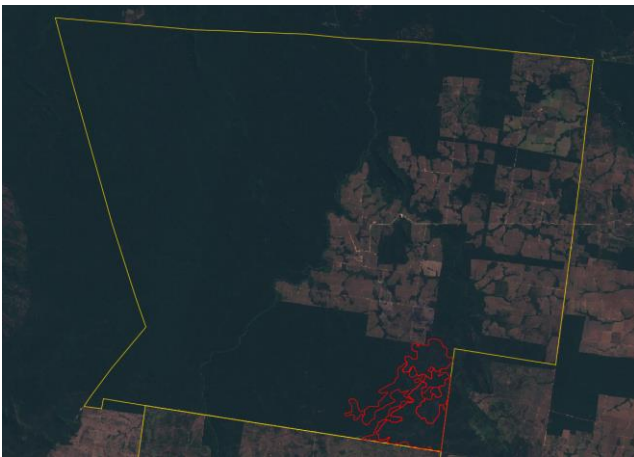
Property Location



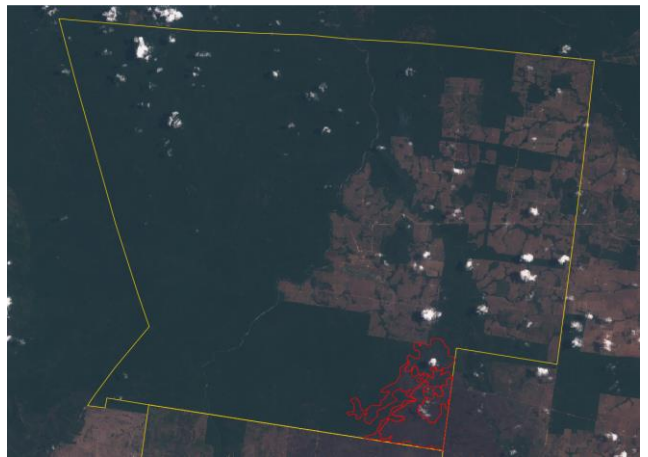
Yellow border – boundary of Cumaru do Norte (Pará) / White border – boundary of Fazenda Rio Dourado /
Red dot – location of cleared area

Alert Imagery (before and after clearance)

02-Aug-19



21-Sep-19



2. Fazenda Rio Dourado (Cumaru do Norte, Pará)

General Information			
Property; Registry	Fazenda Rio Dourado		440321017703
Size (ha); Coordinates	73,286	-51.46070, -8.32050	
Land Clearance			
Period of clearing	02 Aug to 21 Sep 2019		
Size (ha); Coordinates	2,414	-51.41280, -8.43631	
Inside Forest Code protected areas	Yes	2,414 ha inside declared Legal Reserve and APP	
Type of vegetation	Open Submontane Humid Forest		
Legal Status			
Embargoes	Yes	Environmental Law violation (399 ha embargoed in 2018)	
Environmental fines	Yes	Clearing of 399 ha of native vegetation without authorization in 2018	BRL 300,000,000
Natural Reserves	No	-	
Indigenous Lands	Yes	Bordering TI Kaiapó	
Priority for biodiversity conservation	No		
Ownership			
Company group	> 20 companies (e.g. Petrovia, Usina Trapiche, Usina)		
Other linked properties	1 farm in Cumaru do Norte (PA): Fazenda Morada do Boi (unknown area)		
Supply Chain			
Main commodity	Multiple		
Confirmed supply chain relation	Yes		
Soy	Main traders in municipality	Glencore (70%); Agrex (30%)	
	Warehouses within 50 km radius	No warehouses	
	Supply chain details	-	
Beef	Main traders in municipality	JBS (64%); Xinguara Industria Comercio (9%); Frigol (9%); Marfrig (3%); others (15%)	
	Slaughterhouses sourcing from municipality	29 slaughterhouses in São Paulo, Pará and Bahia, including: 3 owned by JBS in Pará (Redenção, Santana do Araguaia and Tucumã); 1 owned by Marfrig in Pará (Tucumã)	
	Supply chain details	Indirectly supplied JBS in Redenção (2019) through Fazenda Morada do Boi (Cumaru do Norte)	
Other supply chain details	-		

2. Fazenda Rio Dourado (Cumaru do Norte, Pará)

Fazenda Rio Dourado has had 399 hectares under embargo since February 2018 for the destruction of flora (1). Nevertheless, the farm continued to indirectly supply cattle to a JBS plant in Redenção (Pará) in 2019 through the nearby (almost bordering) farm Fazenda Morada do Boi (2).

The owner of both cattle farms controls over 20 companies. Among them are Temape, a controlling company of fuel storage centers in the port of Suape. In addition, he is the owner of two major sugar cane mills: Usina Serra Grande, in São José da Lage (Alagoas), and Usina Trapiche, in Sirinhaém (Pernambuco). The latter company has been repeatedly involved in human rights violations against fishermen communities. In 2009, the community accused Usina Trapiche's workers for disposal of materials used to wash sugarcane into the Sirinhaém River, leading to an environmental fine of BRL 1 million (3). In 2011, the company opened clandestine roads, causing intense deforestation in mangrove areas (4). In addition, in 2013, a private security company hired by Usina Trapiche destroyed and set fire to the houses of local fishermen (5). The series of human rights allegations collected by Comissão Pastoral da Terra (CPT) and Oxfam International led Coca-Cola to cancel their sugar supply contracts with Usina Trapiche (6).

(1) <https://servicos.ibama.gov.br/ctf/publico/areasembargadas/ConsultaPublicaAreasEmbargadas.php>

(2) cattle transfer data

(3) <https://terradedireitos.org.br/noticias/noticias/usina-trapiche-e-multada-em-um-milhao-por-cometer-crime-ambiental/1671>

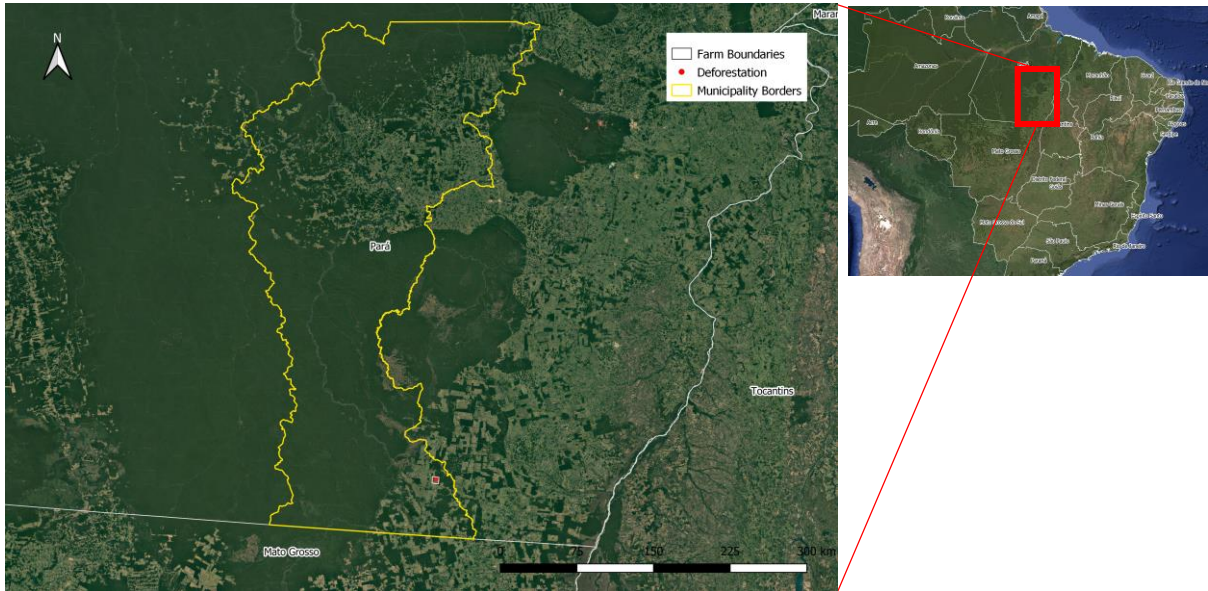
(4) <https://www.cptne2.org.br/index.php/publicacoes/noticias/40-especiais/3580-hist%C3%B3rico-dos-crimes-ambientais-usina-trapiche-%E2%80%93-a-partir-de-2008>

(5) <https://www.cptne2.org.br/index.php/publicacoes/noticias/trabalho-escravo/63-pe/3891-funcion%C3%A1rios-da-usina-trapiche-incendeiam-barraca-de-pescadora-tradicional-em-sirinha%C3%A9m-pe.html>

(6) <http://brasil.agenciapulsar.org/dd-hh/usina-trapiche-tem-contratos-cancelados-pela-coca-cola/>

3. Fazenda Nossa Senhora da Medalha (São Félix do Xingu, Pará)

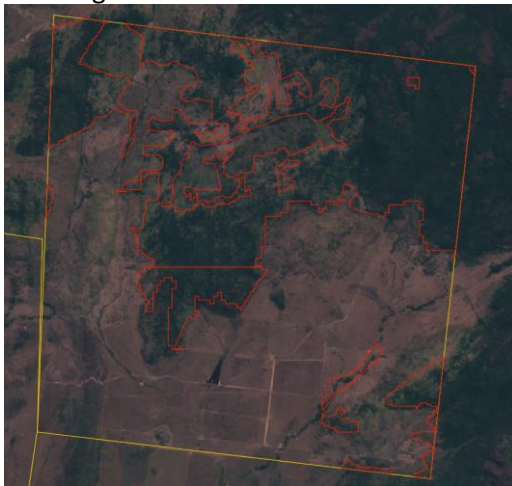
Property Location



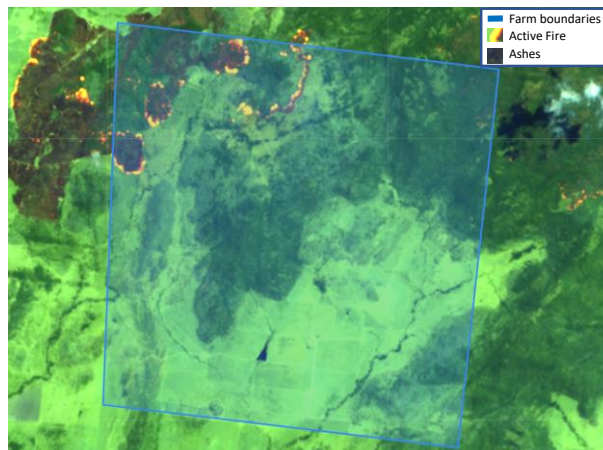
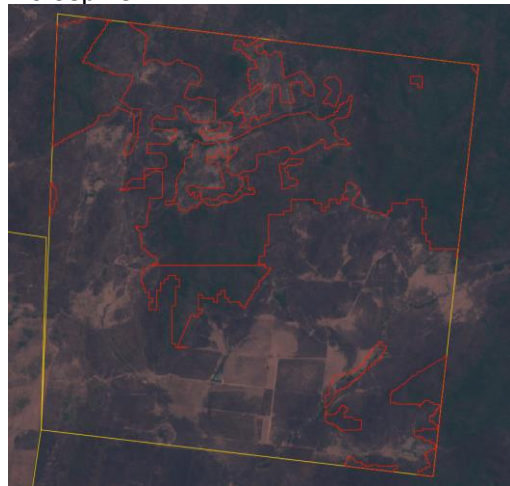
Yellow border – boundary of São Félix do Xingu (Pará) / White border – boundary of Fazenda Nossa Senhora da Medalha / Red dot – location of cleared area

Alert Imagery (before and after clearance)

02-Aug-19



16-Sep-19

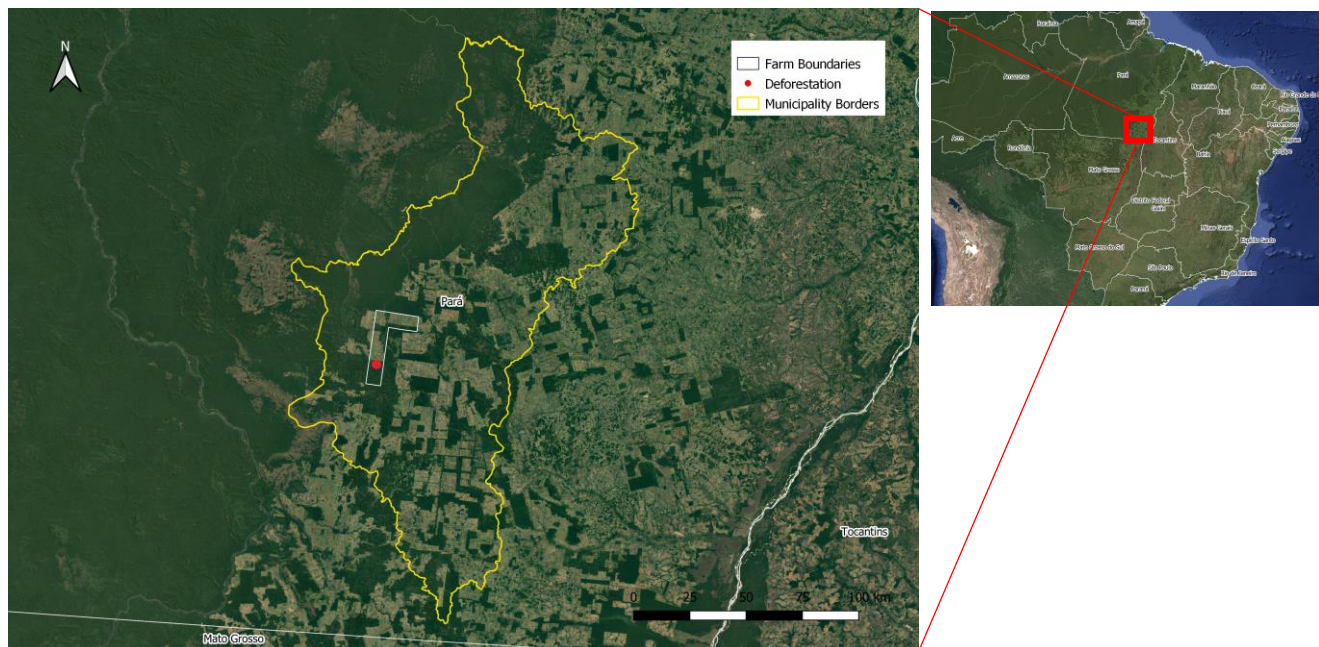


3. Fazenda Nossa Senhora da Medalha (São Félix do Xingu, Pará)

General Information			
Property; Registry		Fazenda Nossa Senhora da Medalha	9500331860153
Size (ha); Coordinates		4,136	-51.65039, -9.24694
Land Clearance			
Period of clearing		02 Aug to 16 Sep 2019	
Size (ha); Coordinates		1,517	-51.65703, -9.24352
Inside Forest Code protected areas		Yes	1,431 ha inside declared Legal Reserve and APP
Type of vegetation		Open Submontane Humid Forest	
Legal Status			
Embargoes		Yes	Environmental Law violation (360 ha embargoed in 2017)
Environmental fines		Yes	Clearing of 360 ha of native vegetation without authorization in 2017 BRL 180,500,000
Natural Reserves		No	-
Indigenous Lands		No	-
Priority for biodiversity conservation		No	
Ownership			
Company group		No linked company found	
Other linked properties		3 farms - total 15,249 ha. In Cumaru do Norte (PA): Fazenda Luanda (4,545 ha), Fazenda São Cosme e Damião (4,945 ha). In Santana do Araguaia (PA): Fazenda Nossa Senhora de Fátima (5,759 ha)	
Supply Chain			
Main commodity		Beef	
Confirmed supply chain relation		Yes	
Soy	Main traders in municipality	No soy exporters in the municipality	
	Warehouses within 50 km radius	No warehouses	
	Supply chain details	-	
Beef	Main traders in municipality	Frigol (42%); Marfrig Global Foods (35%); JBS (10%); Mercúrio Alimentos (5,5%); Xinguara Indústria e Comércio (2,5%); others (5%)	
	Slaughterhouses sourcing from municipality	42 slaughterhouses in Bahia, Goiás, Mato Grosso, Pará, Pernambuco, São Paulo and Tocantins, including: 5 owned by JBS in Pará (Santana do Araguaia, Tucumã, Eldorado do Carajás, Marabá and Redenção); 1 owned by Marfrig in Pará (Tucumã)	
	Supply chain details	Indirect supply to JBS in Rendenção (2019) through Fazenda Cosme e Damião (Cumaru do Norte) and Fazenda Luanda (Cumaru do Norte), and to JBS in Santana do Araguaia (2018) through Fazenda Launda (Cumaru do Norte)	
Other supply chain details		-	

4. Fazenda Cabocla (Cumaru do Norte, Pará)

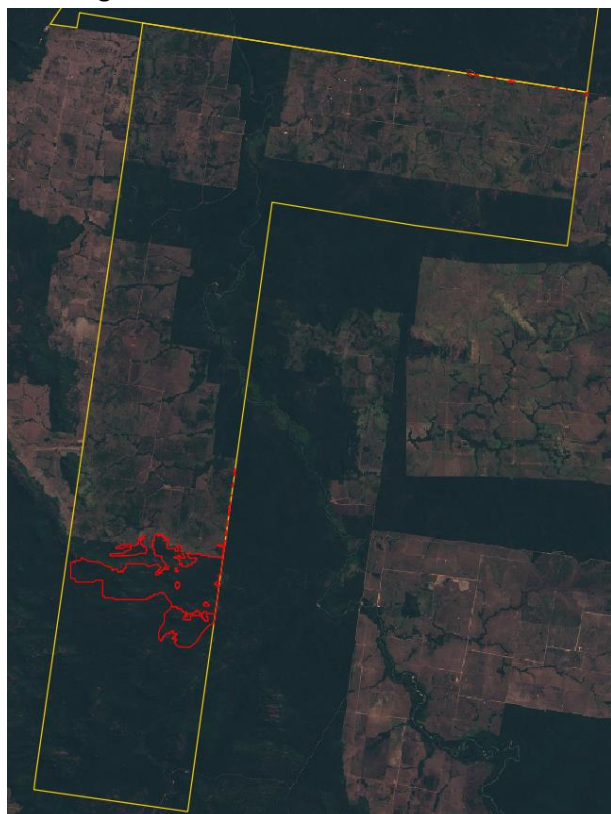
Property Location



Yellow border – boundary of Cumaru do Norte (Pará) / White border – boundary of Fazenda Cabocla / Red dot – location of cleared area

Alert Imagery (before and after clearance)

02-Aug-19



21-Sep-19



4. Fazenda Cabocla (Cumaru do Norte, Pará)

General Information		
Property; Registry	Fazenda Cabocla	9501306969007
Size (ha); Coordinates	30,811	-51.53033, -8.55403
Land Clearance		
Period of clearing	02 Aug to 21 Sep 2019	
Size (ha); Coordinates	1,365	-51.56216, -8.64758
Inside Forest Code protected areas	Yes	1,365 ha inside declared Legal Reserve and APP
Type of vegetation	Open Submontane Humid Forest	
Legal Status		
Embargoes	No	-
Environmental fines	No	-
Natural Reserves	No	-
Indigenous Lands	No	-
Priority for biodiversity conservation	No	
Ownership		
Company group	Sociedade Agropecuária Imaculada Conceição (SOMICOL) / Grupo Amil / UnitedHealth Group Brazil	
Other linked properties	3 farms - total 41,045 ha. In Cumaru no Norte (PA): Fazenda Vale Formoso (22,156 ha), Fazenda Jaguari (12,998 ha) and Fazenda Da Mata (5,891 ha)	
Supply Chain		
Main commodity	Multiple	
Confirmed supply chain relation	Yes	
Soy	Main traders in municipality	Glencore (70%); Agrex (30%)
	Warehouses within 50 km radius	No warehouses
	Supply chain details	-
Beef	Main traders in municipality	JBS (64%); Xinguara Industria Comercio (9%); Frigol (9%); Marfrig (3%); others (15%)
	Slaughterhouses sourcing from municipality	29 slaughterhouses in São Paulo, Pará and Bahia, including: 3 owned by JBS in Pará (Redenção, Santana do Araguaia and Tucumã); 1 owned by Marfrig in Pará (Tucumã)
	Supply chain details	Directly supplied JBS in Redenção (2019) and in Santana do Araguaia (2019)
Other supply chain details	-	

Fazenda Cabocla is owned by Sociedade Agropecuária Imaculada Conceição Ltda (SOMICOL) (1), which is part of Grupo Amil, one of the largest health insurance companies in Brazil (2). UnitedHealth Group bought the conglomerate in 2012 (3). Three of the four owners of SOMICOL are on the list of Brazilian billionaires published by *Forbes* magazine in 2019.

SOMICOL owns at least two other cattle farms next to Fazenda Cabocla in Cumaru do Norte, all with direct supply chain links to meatpacker JBS (4). There has been an embargo in one of the other farms under the same ownership, Fazenda Jaguari, since February 2018 (5). While there are no cattle transfer records of JBS sourcing from Fazenda Jaguari in 2019, JBS has continued to source from Fazenda Cabocla in 2019.

As detailed in the table on page 13, within Fazenda Cabocla there were 1,365 hectares of potentially illegal deforestation between August and September 2019. NASA also detected fires in September 2019 in the farm and deforested area under alert (6).

(1) <http://car.semas.pa.gov.br/#/>

(2) <https://forbes.com.br/negocios/2014/06/a-historia-de-sucesso-de-edson-de-godoy-bueno/>

(3) <https://www.uhcglobal.com/global-markets/latin-america/brazil/>

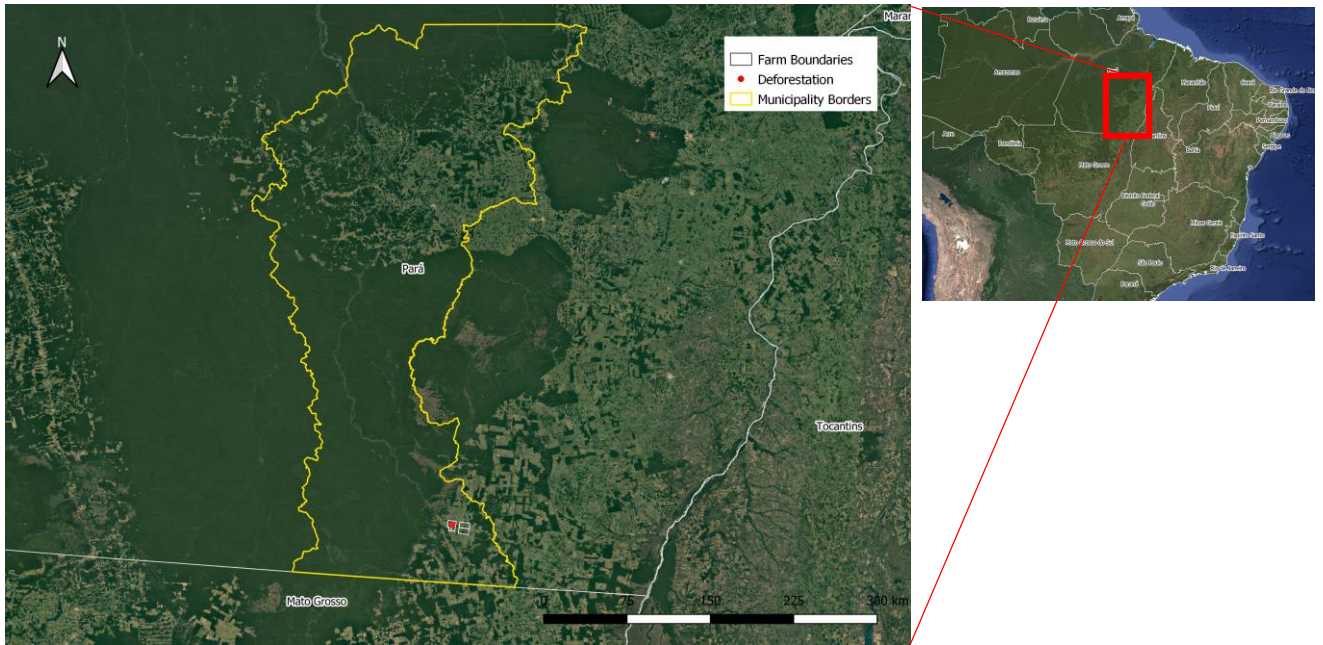
(4) Cattle transfer data

(5) <https://servicos.ibama.gov.br/ctf/publico/areasembargadas/ConsultaPublicaAreasEmbargadas.php>

(6) https://firms.modaps.eosdis.nasa.gov/active_fire/#firms-shapefile

5. Fazenda Brusque do Xingu (São Félix do Xingu, Pará)

Property Location

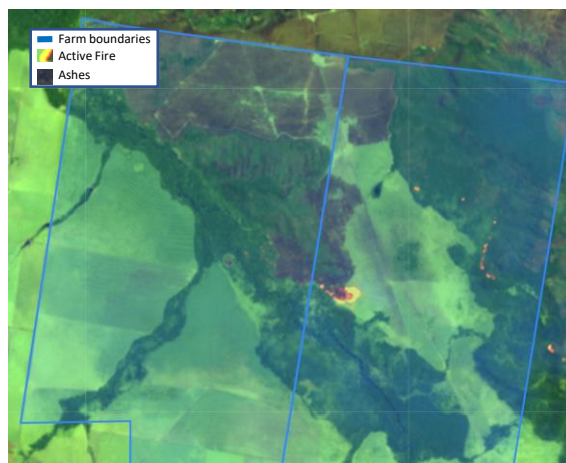
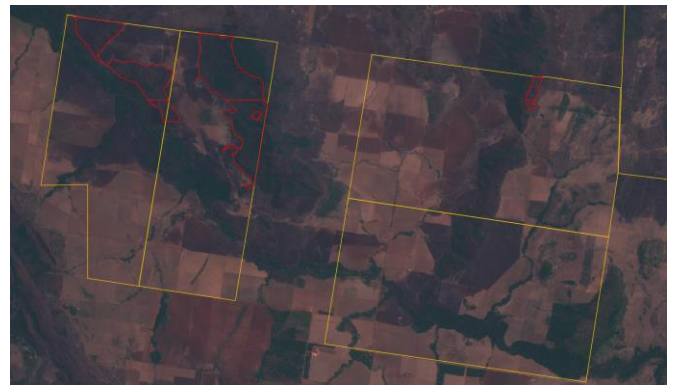


Yellow border – boundary of São Félix do Xingu (Pará) / White border – boundary of Fazenda Brusque do Xingu / Red dot – location of cleared area

Alert Imagery (before and after clearance)

02-Aug-19

16-Sep-19



5. Fazenda Brusque do Xingu (São Félix do Xingu, Pará)

General Information		
Property; Registry	Fazenda Brusque do Xingu	9501650346736
Size (ha); Coordinates	15,837	-51.81097, -9.27059
Land Clearance		
Period of clearing	02 Aug to 16 Sep 2019	
Size (ha); Coordinates	996	-51.80714, -9.23956
Inside Forest Code protected areas	Yes	544 ha inside declared Legal Reserve and APP
Type of vegetation	Open Submontane Humid Forest	
Legal Status		
Embargoes	Yes	Environmental Law violation (1,065 ha embargoed in 2012)
Environmental fines	Yes	Clearing of 1,065 ha of native vegetation without authorization in 2012
Natural Reserves	No	-
Indigenous Lands	No	-
Priority for biodiversity conservation	No	
Ownership		
Company group	Agropecuária Umuarama; Agropecuária Novo Norte	
Other linked properties	16 farms - at least 57,700 ha. In São Félix do Xingu (PA): Fazenda Flor da Mata (4,453 ha), Fazenda Gamela (10,726 ha), Fazenda Souza (3,283 ha) and Lote 26G (3,094 ha). In Canaã dos Carajás (PA): Fazenda Lagoa das Antas (32,584 ha), Fazenda Pouso do Sol (2,150ha) and Sítio SH36, 37, 38, 39 and 40 (465 ha). In Xinguara (PA): Fazenda Pedra Branca (944 ha). In Jacareacanga (PA): Fazenda Boi Verde. In Vila Bela de Santíssima Trindade (MT): Fazenda Campo Alegre, Fazenda São Francisco e São Sebastião do Guaporé, Fazenda Marambaia, and Fazenda Birigui. In Nova Bandeirantes (MT): Fazenda Santa Luzia. In Nova Santa Helena (MT): Fazenda Santa Laura Vicuñas and Fazendas Reunidas	
Supply Chain		
Main commodity	Beef	
Confirmed supply chain relation	Yes	
Soy	Main traders in municipality	No soy exporters in the municipality
	Warehouses within 50 km radius	No warehouses
	Supply chain details	-
Beef	Main traders in municipality	Frigol (42%); Marfrig Global Foods (35%); JBS (10%); Mercúrio Alimentos (5,5%); Xinguara Indústria e Comércio (2,5%); others (5%)
	Slaughterhouses sourcing from municipality	42 slaughterhouses in Bahia, Goiás, Mato Grosso, Pará, Pernambuco, São Paulo and Tocantins, including: 5 owned by JBS in Pará (Santana do Araguaia, Tucumã, Eldorado do Carajás, Marabá and Redenção); 1 owned by Marfrig in Pará (Tucumã)
	Supply chain details	Indirect supply to Marfrig in Tucumã (2018) through Fazenda Pedra Branca (Xinguara)
Other supply chain details	-	

5. Fazenda Brusque do Xingu (São Félix do Xingu, Pará)

Umuarama group controls four livestock companies with farms in São Felix do Xingu (PA), Canaã dos Carajás (PA), Sapucaia (PA) and Barreiras (BA) (1). The group is active in car sales, operates real estate agencies and participates in the management of Tocantins Export Processing Zone (ZPE Tocantins) (1).

In total, 381 workers have been rescued from slave labor conditions in properties linked to Umuarama group (2). In 2017, the most recent operation rescued 23 workers from Fazenda Santa Laura, in Nova Santa Helena, Mato Grosso (3). One of the shareholders of Umuarama group was sentenced to pay a fine for being part of a slave-labor scheme in Southern Pará (4) and in 2008 was part of the government list of biggest deforesters of the country (5). In 2018, the group was also sentenced to pay a BRL 6 million fine in a court decision regarding violations of labor law (6).

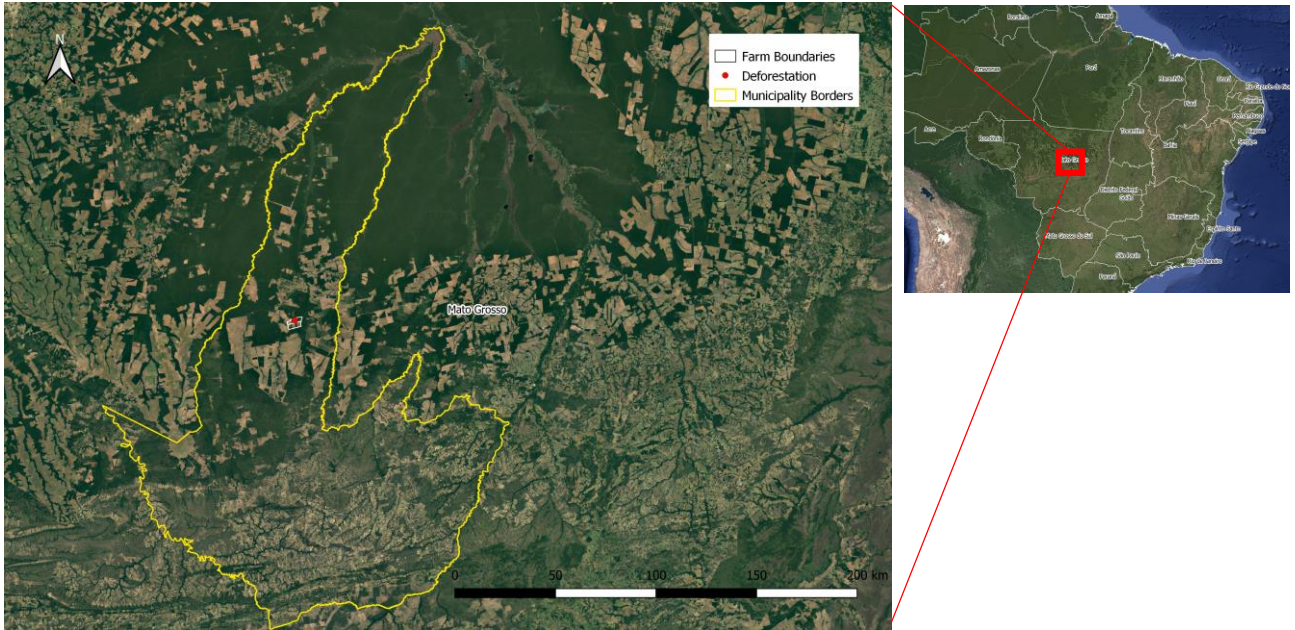
Another shareholder of Umuarama group has been under a Federal Police investigation (Operação Reis do Gado) since 2016 for suspicion of participation in a corruption and money laundering scheme (7). The prosecution indicates that two farms (BRL 60 million) were donated to politicians to gain Umuarama group's favor in public tenders (8). In October 2019, a former governor of Tocantins was arrested by the Federal Police under the same operation (9).

Umuarama group shareholders were also linked to the Frigorífico Quatro Marcos, a beef processor with links to violations of labor laws in different plants (10). Quatro Marcos underwent receivership (judicial reorganization) in 2008, and they subsequently sold some of their plants to JBS.

- (1) <https://www.consultasocio.com/q/sa/agropecuaria-umuarama-ltda>
- (2) <https://reporterbrasil.org.br/2006/10/fazendeiro-que-ganhou-r-2-milhoes-por-usar-escravos-volta-a-atacar/>
- (3) <https://g1.globo.com/mato-grosso/noticia/operacao-resgata-23-trabalhadores-em-fazenda-de-mt-e-mpt-pede-indenizacao-de-r-100-milhoes.ghtml>
- (4) <http://www.prt15.mpt.mp.br/informe-se/boletins/2-uncategorised/677-trabalho-escravo-mpt-pede-indenizacao-de-r-100-milhoes-e-expropriacao-de-fazenda-onde-23-trabalhadores-foram-resgatados>
- (5) <http://g1.globo.com/Amazonia/0,,MUL778368-16052,00-MINISTERIO+DO+MEIO+AMBIENTE+DIVULGA+LISTA+DOS+MAIORES+DESMATADORES+DA+AMAZO.h tml>
- (6) <http://prt23.mpt.gov.br/procuradorias/ptm-alta-floresta/1023-grupo-economico-familiar-de-mt-e-condenado-a-pagar-r-6-milhoes-por-trabalho-escravo>
- (7) <https://www.t1noticias.com.br/estado/pf-nas-ruas-de-palmas-nesta-terca-cumprindo-tres-mandados-de-prisao/106169/>
- (8) www.mpf.mp.br/to/sala-de-imprensa/docs/Deciso352559.2019.pdf
- (9) <https://www.t1noticias.com.br/politica/marcelo-miranda-pai-irmao-e-mais-5-viram-reus-no-processo-da-operacao-reis-do-gado/98300/>
- (10) <https://reporterbrasil.org.br/2008/02/decisao-paralisa-atividades-de-frigorifico-do-grupo-quatro-marcos/>

6. Fazenda Macuco (Paranatinga, Mato Grosso)

Property Location



Yellow border – boundary of Paranatinga (Mato Grosso) / White border – boundary of Fazenda Macuco / Red dot – location of cleared area

Alert Imagery (before and after clearance)

02-Aug-19



21-Sep-19



6. Fazenda Macuco (Paranatinga, Mato Grosso)

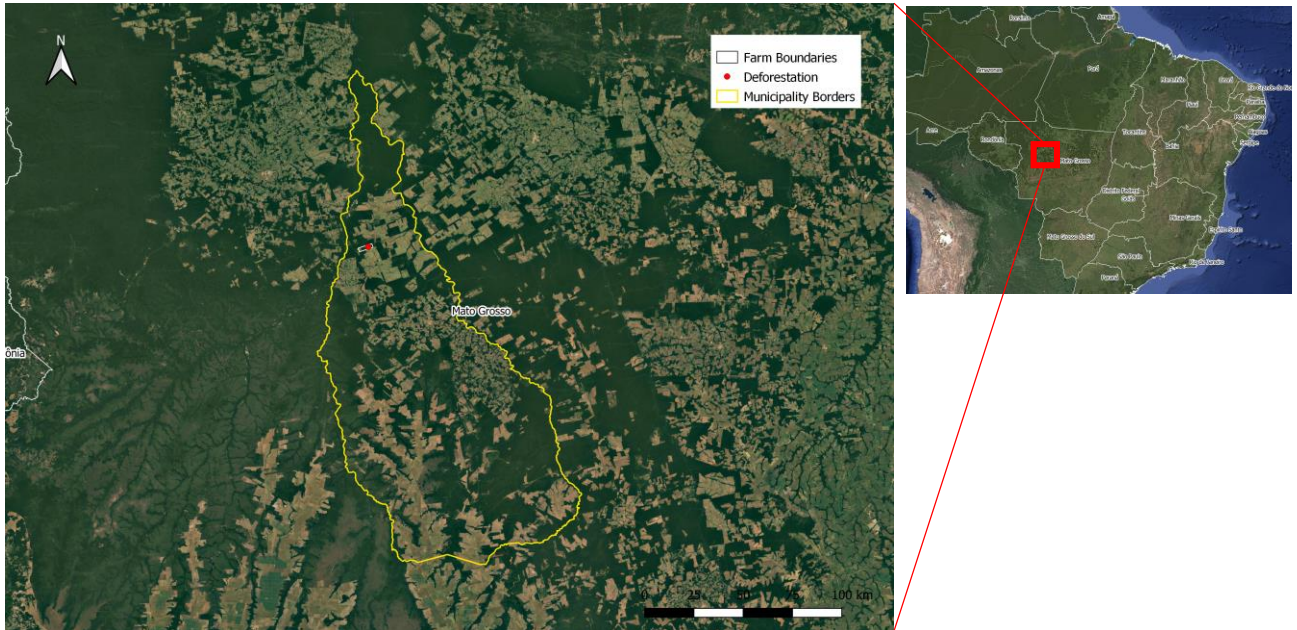
General Information		
Property; Registry	Fazenda Macuco	9500171706071
Size (ha); Coordinates	3,169	-54.21275, -13.30576
Land Clearance		
Period of clearing	02 Aug to 21 Sep 2019	
Size (ha); Coordinates	919	-54.21257, -13.30411
Inside Forest Code protected areas	Yes	919 ha inside declared Legal Reserve and APP
Type of vegetation	Montane Semi Deciduous Seasonal Forest	
Legal Status		
Embargoes	No	-
Environmental fines	No	-
Natural Reserves	No	-
Indigenous Lands	No	-
Priority for biodiversity conservation	No	
Ownership		
Company group	Vikan Empreendimentos Imobiliários	
Other linked properties	1 bordering farm in Paranatinga (PA): Fazenda Macuco Gabriela I (1,622 ha)	
Supply Chain		
Main commodity	Multiple	
Confirmed supply chain relation	Yes	
Soy	Main traders in municipality	Domestic Consumption (68%); Bunge (32%)
	Warehouses within 50 km radius	14 warehouses, e.g.: 1 owned by Bunge (29,7600 MT) and inside the property 2 owned by Macuco Agropecuária (33,130 MT)
	Supply chain details	-
Beef	Main traders in municipality	Marfrig Global Foods (57%); JBS (25%); Minerva (7%); others (11%)
	Slaughterhouses sourcing from municipality	13 slaughterhouses in Mato Grosso and São Paulo, including: 5 owned by JBS in Mato Grosso (Colider, Pedra Preta, Diamantino, Barra do Garças and Água Boa); 2 owned by Minerva in Mato Grosso (Paranatinga and Várzea Grande); 1 owned by Marfrig in Mato Grosso (Paranatinga)
	Supply chain details	Indirect supply to Marfrig in Paranatinga (2019) and to Minerva in Paranatinga (2019) and in Várzea Grande (2018) through Fazenda Agrochapada (Paranatinga)
Other supply chain details	-	

Vikan Empreendimentos Imobiliários is part of Vikstar Group, a telemarketing company with 6 units in Brazil and more than 14,000 workers (1). The company operates also in Piauí, including a call center in Parnaíba that is providing services to public institutions (2). The company is also linked to the construction of a “new” city, Santiago do Norte, with the promise of being new agribusiness center in Mato Grosso (3).

- (1) <http://www.acidadevotuporanga.com.br/cidade/2018/07/com-1-600-funcionarios-vikstar-deve-contratar-mais-em-votuporanga-n49141>
- (2) <https://www.portalrg.com.br/noticia/governo-recebe-presidente-da-vikstar-e-discute-ampliacao-da-empresa-26723.html>
- (3) <https://www.tribunamt.com.br/2014/03/14/futura-cidade-e-opcao-para-investimento/>

7. Fazenda Nove de Julho (Brasnorte, Mato Grosso)

Property Location



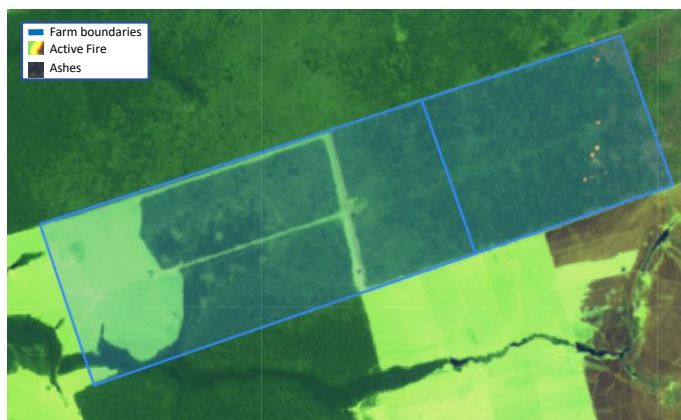
Yellow border – boundary of Brasnorte (Mato Grosso) / White border – boundary of Fazenda Nove de Julho / Red dot – location of cleared area

Alert Imagery (before and after clearance)

08-Aug-19



17-Sep-19



7. Fazenda Nove de Julho (Brasnorte, Mato Grosso)

General Information		
Property; Registry	Fazenda Nove de Julho	9010750948896
Size (ha); Coordinates	17,390	-58.31595, -11.77419
Land Clearance		
Period of clearing	08 Aug to 17 Sep 2019	
Size (ha); Coordinates	743	-58.28262, -11.76634
Inside Forest Code protected areas	Yes	743 ha inside declared Legal Reserve
Type of vegetation	Open Submontane Humid Forest	
Legal Status		
Embargoes	No	-
Environmental fines	No	-
Natural Reserves	No	-
Indigenous Lands	No	-
Priority for biodiversity conservation	No	
Ownership		
Company group	No linked company found	
Other linked properties	5 farms - total 4,560 ha. In Juara (MT): Fazenda Sagarana (2,180 ha). In Brasnorte (MT): Sítio Rio Verde (109 ha), Fazenda Flor da Mata (590 ha) and Fazenda Água Boa (968 ha). In Santo Antônio do Leverger (MT): Estância Indiana (713 ha)	
Supply Chain		
Main commodity	Beef and Soy	
Confirmed supply chain relation	Yes	
Soy	Main traders in municipality	Amaggi (67%); Bunge (11%); CGG (10%); Domestic Consumption (12%). In 2017, ranked 10th in soy production in Mato Grosso.
	Warehouses within 50 km radius	7 warehouses, e.g.: 1 owned by Aldo Rezende Telles inside the property (12,630 MT)
	Supply chain details	Fazenda Nove de Julho supplied soy to Bunge (2019) and Amaggi (2018)
Beef	Main traders in municipality	Marfrig Global Foods (66%); JBS (24%); Minerva (4%); others (6%)
	Slaughterhouses sourcing from municipality	21 slaughterhouses in Mato Grosso, including: 3 owned by JBS (Diamantino, Juara and Juina); 2 owned by Marfrig (Pontes e Lacerda and Tangará da Serra); 1 owned by Minerva (Várzea Grande); 1 owned by Naturafrig (Barra do Bugres)
	Supply chain details	Direct supply to JBS in Juína (2019), Diamantina (2019) and Juara (2019)
Other supply chain details	-	

7. Fazenda Nove de Julho (Brasnorte, Mato Grosso)

Fazenda Nove de Julho produces both beef and soy. Cattle from the farm was transferred in 2018 and 2019 to JBS processing facilities in Juína, Diamantino, and Juara (Mato Grosso) (1). Moreover, cattle was directly sent from Estância Indiana (under the same ownership) in Santo Antônio do Leverger (Mato Grosso) to Minerva's slaughterhouse in Várzea Grande (Mato Grosso). In addition, Estância Indiana (part in Cuiabá - MT) has received cattle from Agropecuária Santa Barbara Xinguara (AgroSB Group/Opportunity Fund), allegedly the biggest deforester in Brazil in 2017 (2).

Soy was supplied from Fazenda Nove de Julho in 2019 to Bunge and in 2018 to Amaggi (3).

The owner of Fazenda Nove de Julho is councilor of the Association of Breeders of Mato Grosso (Acrimat) (4). He is currently under investigation for environmental irregularities (5), and he was accused by Mato Grosso prosecutors in April 2019 of fraudulent actions related to the registration of his farm Fazenda 9 de Julho in Mato Grosso's Rural Environmental Registry (CAR) system (6, 7).

(1) Cattle transfer data

(2) <http://www.mightyearth.org/soy-and-cattle-report-6/>

(3) Undisclosed source

(4) <https://www.sonoticias.com.br/agronoticias/associacao-dos-criadores-de-gado-elege-nova-diretoria>

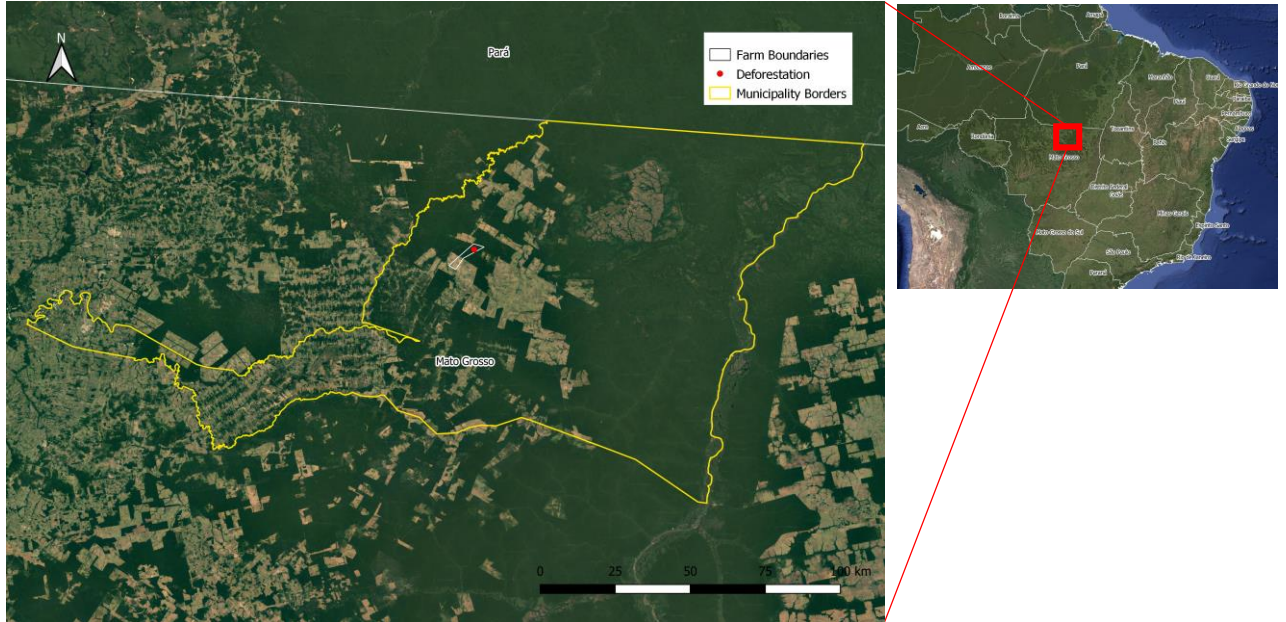
(5) <https://www.al.mt.gov.br/storage/webdisco/cp/20170410121129301000.pdf>

(6) <http://www.paranatinganews.com.br/policia/mpe-investiga-13-fazendeiros-por-fraudes-na-sema-veja-os-avos/138267200>

(7) <https://www.olharjuridico.com.br/noticias/exibir.asp?id=39939¬icia=promotores-instauram-inquerito-contra-17-investigados-por-fraudes-em-car-veja-lista>

8. Fazenda São José I (Peixoto de Azevedo, Mato Grosso)

Property Location



Yellow border – boundary of Peixoto de Azevedo (Mato Grosso) / White border – boundary of Fazenda São José I / Red dot – location of cleared area

Alert Imagery (before and after clearance)

02-Aug-19



21-Sep-19



8. Fazenda São José I (Peixoto de Azevedo, Mato Grosso)

General Information			
Property; Registry		Fazenda São José I	9999200520432
Size (ha); Coordinates		2,452	-53.83565, -10.02166
Land Clearance			
Period of clearing		02 Aug to 21 Sep 2019	
Size (ha); Coordinates		708	-53.80938, -10.00355
Inside Forest Code protected areas		Yes	708 ha inside declared Legal Reserve and APP
Type of vegetation		Open Submontane Humid Forest	
Legal Status			
Embargoes		Yes	Environmental Law violation (154 ha embargoed in 2014)
Environmental fines		Yes	Clearing of 154 ha of native vegetation without authorization in 2014 BRL 116,250,000
Natural Reserves		No	-
Indigenous Lands		No	-
Priority for biodiversity conservation		No	
Ownership			
Company group		Agropecuária Santa Lúcia; Agropecuária São Judas; Agropecuária São Judas Tadeu	
Other linked properties		6 farms - unknown area. Bordering farm in Peixoto de Azevedo (MT): Fazenda São José (2,458 ha). In Altamira (PA): Fazenda Rio Preto, Agropecuária Santa Lúcia and Agropecuária São Judas Tadeu. In Almerin (PA): Agropecuária São Judas. In Novo Progresso (PA): Fazenda Borbulha	
Supply Chain			
Main commodity		Beef and Soy	
Confirmed supply chain relation		Yes	
Soy	Main traders in municipality	Bunge (88%); COFCO (12%)	
	Warehouses within 50 km radius	No warehouses	
	Supply chain details	Linked bordering farm Fazenda São José supplied soy to Amaggi (2017) and Cargill (2016)	
Beef	Main traders in municipality	JBS (47%); Vale Grande Indústria e Comércio de Alimentos (28%); Marfrig Global Foods (13,5%); others (11,5%)	
	Slaughterhouses sourcing from municipality	5 slaughterhouses in Mato Grosso, including: 3 owned by JBS (Colider, Confresa and Barra do Garças)	
	Supply chain details	Indirect supply to Vale Grande in Matupá (2018) through Fazenda Gavião (Matupá)	
Other supply chain details		-	

The three linked companies (Agropecuária Santa Lúcia, Agropecuária São Judas and Agropecuária São Judas Tadeu) have operations in São Paulo, Minas Gerais, Goiás, Mato Grosso and Pará states. In 2010, a linked shareholder was part of a Federal Police list that included 93 farmers who allegedly participated in illegal timber trading in Mato Grosso (1). In 2014, as indicated in the table, 154 hectares of Fazenda São José were embargoed for violation of environmental law. The Rural Environmental Register (CAR) of the farm was declared in 2015 and does not include the embargoed area. This might be a case where the CAR is used to clean the property of any fines or illegalities, simply removing these areas from the registration. The companies are linked to producer groups that are closely associated with the recent fire events in the Amazon (2).

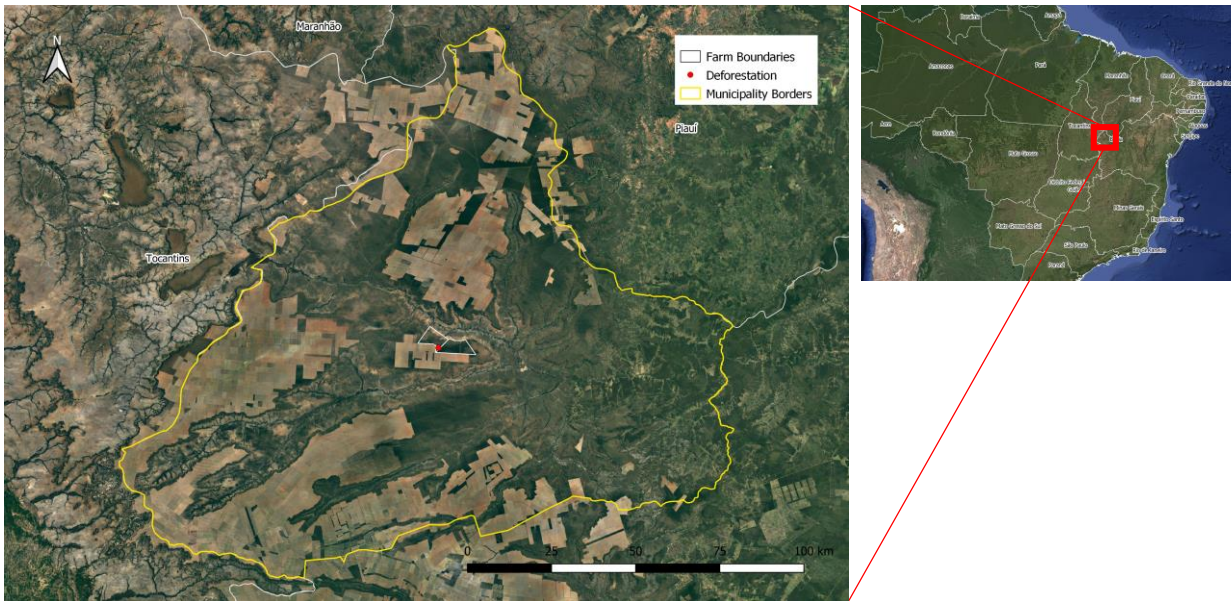
(1) <https://www.olhardireto.com.br/noticias/exibir.asp?id=107007¬icia=pf-indicia-93-pessoas-acusadas-de-crimes-ambientais-confira-a-lista-dos-envolvidos>

(2) <https://www.nytimes.com/2019/10/06/video/amazon-rainforest-fires-burning.html>

9. Fazenda Santa Maria Gleba 02 and 03 (Formosa do Rio Preto, Bahia)

Cerrado
biome

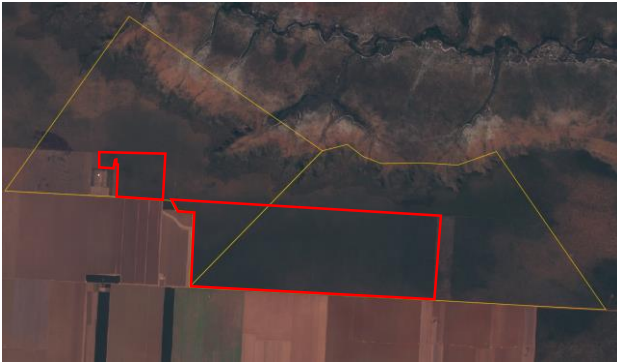
Property Location



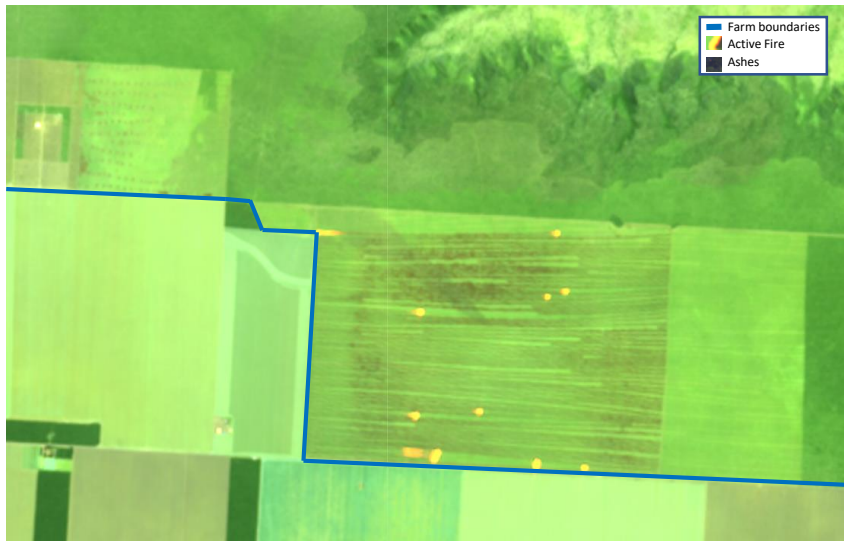
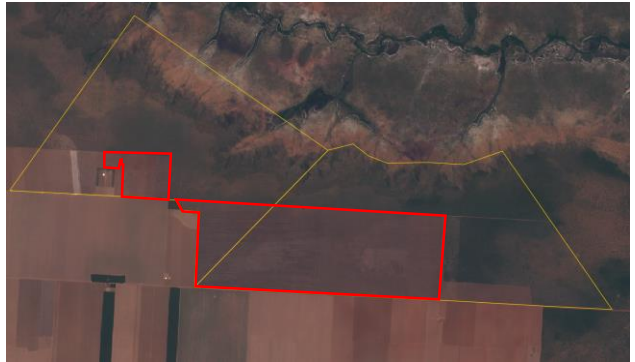
Yellow border – boundary of Formosa do Rio Preto (Bahia) / White border – boundary of Fazenda Santa Maria Gleba 02 and 03 / Red dot – location of cleared area

Alert Imagery (before and after clearance)

03-Aug-19



12-Oct-19



9. Fazenda Santa Maria Gleba 02 and 03 (Formosa do Rio Preto, Bahia)

**Cerrado
biome**

General Information		
Property; Registry	Fazenda Santa Maria Gleba 02 / Fazenda Santa Maria Gleba 03	9501903353203 / 9501903353394
Size (ha); Coordinates	6,627	-45.69817, -10.97880
Land Clearance		
Period of clearing	03 Aug to 12 Oct 2019	
Size (ha); Coordinates	1,954	-45.74685, -10.97931
Inside Forest Code protected areas	No	-
Type of vegetation	Wooded Savanna	
Legal Status		
Embargoes	No	-
Environmental fines	No	-
Natural Reserves	Yes	APA do Rio Preto
Indigenous Lands	No	-
Priority for biodiversity conservation	Extremely high	
Ownership		
Company group	Agrotupã Agricultura de Precisão - Oeste Plantar	
Other linked properties	4 farms - total 14,080 ha. In Catolândia (BA): Fazenda Baixa da Vitória (2,050 ha). In Formosa do Rio Preto (BA): Fazenda Santa Maria Gleba 01 (2,530 ha) and Fazenda Boa Esperança (4,850 ha). In Buritirama (BA): Fazenda Boa Vista (4,650 ha). The company Agrotupã also operates in Amapá, Mato Grosso do Sul and Paraná states.	
Supply Chain		
Main commodity	Soy	
Confirmed supply chain relation	No	
Soy	Main traders in municipality	Bunge (28%); ALZ Grãos (25%); Cargill (6%); Horita (5%); and Domestic Consumption (36%). In 2017, ranked 2nd in soy production in Brazil.
	Warehouses within 50 km radius	21 warehouses, e.g.: 4 owned by Bunge (151,200 MT), 1 owned by ALZ Grãos (50,000 MT) and 1 owned by Cargill (50,000 MT)
	Supply chain details	-
Beef	Main traders in municipality	JBS (100%)
	Slaughterhouses sourcing from municipality	12 slaughterhouses in Bahia, including: 1 owned by JBS (Itapetinga)
	Supply chain details	-
Other supply chain details	-	

9. Fazenda Santa Maria Gleba 02 and 03 (Formosa do Rio Preto, Bahia)

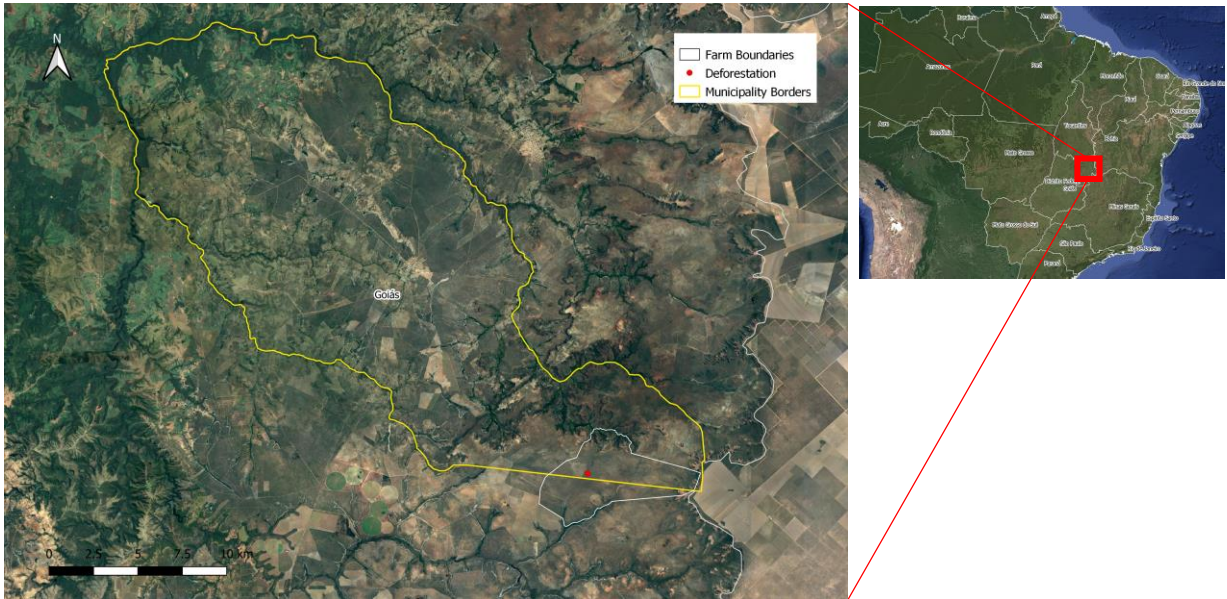
A court decision from May 2019 lists Fazenda Santa Maria as a possible case of land grabbing. The same court decision suspended the ownership of the farm under the name of Jacy Pimentel de Souza (1). He allegedly forged a false inventory to register the farm in his name without the signature of the rightful heirs, and later transferred the registration to the company Agrotupã Agricultura de Precisão (Oeste Plantar). The company had a turnover of USD 72,300 in 2018 and employs eight people (2). This company is linked to Agrotupã Planejamento Agrícola (3), registered in Tupãssi (Paraná), home city of the owners of both companies and where they own 1,061 hectares (4).

In January 2016, Jacy was authorized to clear 2,302 hectares in Fazenda Santa Maria Gleba 02 and 458 hectares in Fazenda Santa Maria Gleba 01. Also in January 2016, Oeste Plantar was authorized to clear 2,782 hectares in Fazenda Santa Maria Gleba 03 and 3,850 hectares in Empreendimento Rural Fazenda Santa Maria (5).

- (1) <https://cdn.jornalgrandebahia.com.br/2019/05/Decis%C3%A3o-judicial-do-Desembargador-Salom%C3%A3o-Resed%C3%A1-sobre-conflito-fundi%C3%A1rio-em-Formosa-do-Rio-Preto-e-Santa-Rita-de-C%C3%A1ssia-20190509.pdf>
- (2) <https://www.cnpj.world/empresa/agrotupa-agricultura-de-precisao-ltda/11980522000113>
- (3) <https://www.cnpj.world/empresa/agrotupa-planejamento-agricola-ltda/cx7y5heLo>
- (4) <http://www.pioneersementes.com.br/media-center/artigos/32/planejamento-e-conhecimento-tecnico-para-obter-melhores-rendimentos-na-segunda-safra>
- (5) <https://www.escavador.com/diarios/318726/DOEBA/executivo/2016-01-27?page=40>

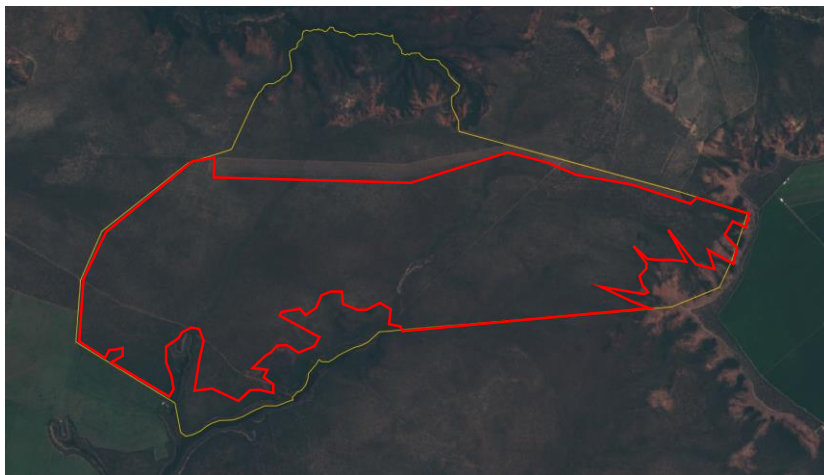
10. Fazenda Grotão (Damianópolis, Goiás)

Property Location

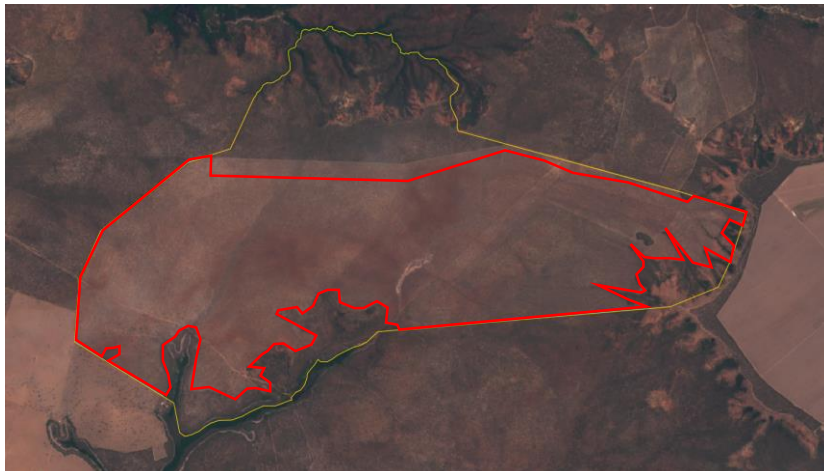


Yellow border – boundary of Damianópolis (Goiás)/ White border – boundary of Fazenda Grotão / Red dot – location of cleared area

Alert Imagery (before and after clearance)



16-Mar-19



12-Oct-19

10. Fazenda Grotão (Damianópolis, Goiás)

General Information		
Property; Registry	Fazenda Grotão	9500172043823
Size (ha); Coordinates	2,630	-46.07058, -14.67151
Land Clearance		
Period of clearing	16 Mar to 12 Oct 2019	
Size (ha); Coordinates	1,778	-46.08216, -14.66891
Inside Forest Code protected areas	Yes	485 ha inside declared Legal Reserve
Type of vegetation	Forested Savanna	
Legal Status		
Embargoes	No	-
Environmental fines	No	-
Natural Reserves	Yes	APA Nascentes do Rio Vermelho
Indigenous Lands	No	-
Priority for biodiversity conservation	Very high	
Ownership		
Company group	Novaterra Incorporações Imobiliárias e Participações / NA Fomento Mercantil	
Other linked properties	1 farm in Sítio d'Abadia (GO): Quinhão 01 (2,598 ha)	
Supply Chain		
Main commodity	Unknown	
Confirmed supply chain relation	No	
Soy	Main traders in municipality	Bunge (76%); Domestic Consumption (24%)
	Warehouses within 50 km radius	19 warehouses, e.g.: 6 owned by Coop Agrop Reg Piratinga (103,900 MT)
	Supply chain details	-
Beef	Main traders in municipality	JBS (38%); Minerva (36%); Mataboi Alimentos (23%); others (3%)
	Slaughterhouses sourcing from municipality	6 slaughterhouses in Goiás, including: 1 owned by Friboi (Goiânia)
	Supply chain details	-
Other supply chain details	-	

Fazenda Grotão is owned by real estate company Novaterra Incorporações Imobiliárias e Participações (Novaterra), registered in Campinas (São Paulo). The company had a turnover of USD 1.29 million in 2018, employs 36 staff (1), and its manager, Wagner Bisco, is owner of 23 other companies. Wagner, his brother João Batista Bisco, and his son Frederico Luís Penteado Bisco were all charged by the Federal Police as part of Operação Rosa dos Ventos in 2017 for participating in a scheme of tax evasion and money laundering in Campinas (SP), orchestrated by sugarcane businessman Miceno Rossi Neto (2). The Bisco's used their company NA Fomento Mercantil, a banking, insurance, and financial services company (3), to create fictitious debts and juridical disputes to transfer assets from two sugarcane factories – Usina São Paulo and Usina Santa Mercedes – to Miceno Rossi Neto (2). Since March 2019, continual deforestation has taken place on the farm.

(1) <https://orbis.bvdinfo.com>

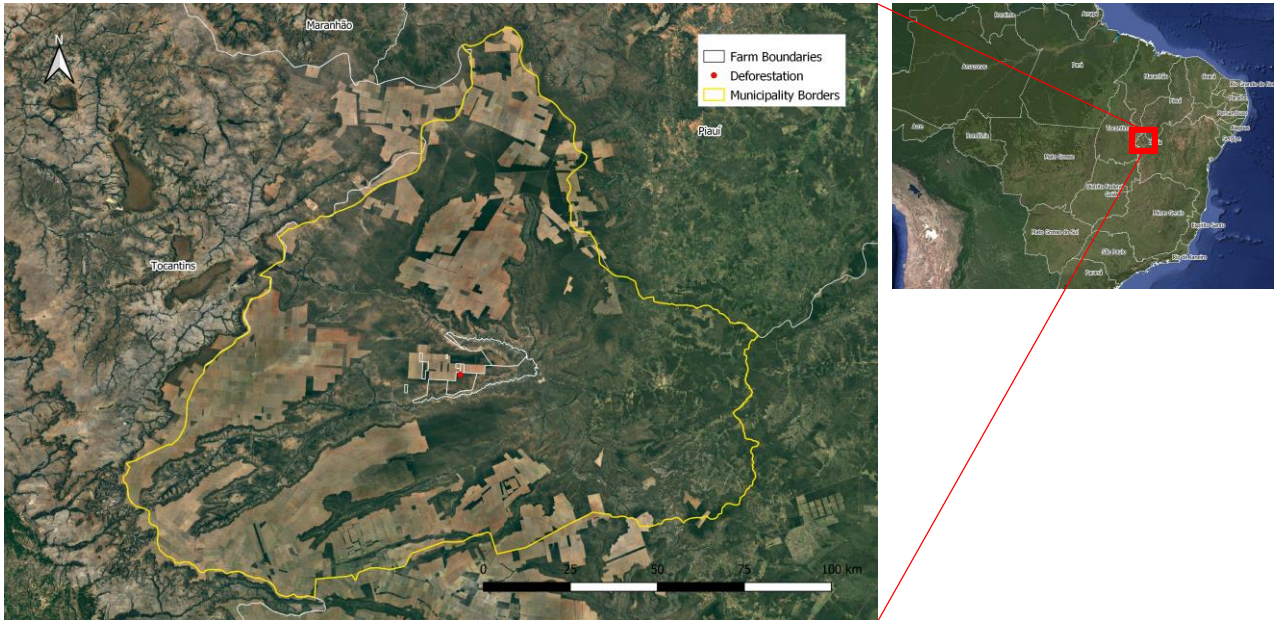
(2) <https://politica.estadao.com.br/blogs/fausto-macedo/wp-content/uploads/sites/41/2017/10/Relat%C3%B3rio-Eletr%C3%B4nico-Final.pdf>

(3) <https://orbis.bvdinfo.com>

11. Fazenda Santa Maria d'Oeste 14 (Formosa do Rio Preto, Bahia)

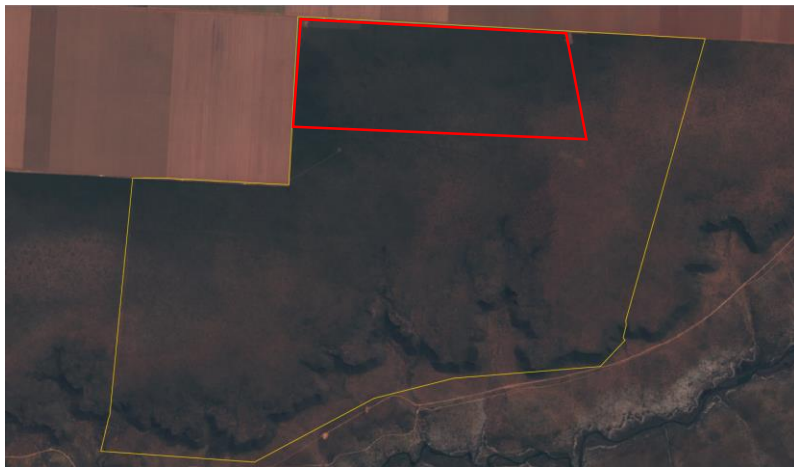
Cerrado
biome

Property Location



Yellow border – boundary of Formosa do Rio Preto (Bahia) / White border – boundary of Fazenda Santa Maria d'Oeste 14 / Red dot – location of cleared area

Alert Imagery (before and after clearance)



18-Aug-19



12-Oct-19

11. Fazenda Santa Maria d'Oeste 14 (Formosa do Rio Preto, Bahia)

General Information			
Property; Registry	Fazenda Santa Maria D'Oeste 14		4321050368896
Size (ha); Coordinates	3,967	-45.72585, -11.04443	
Land Clearance			
Period of clearing	18 Aug to 12 Oct 2019		
Size (ha); Coordinates	663	-45.72851, -11.02222	
Inside Forest Code protected areas	No	-	-
Type of vegetation	Wooded Savanna		
Legal Status			
Embargoes	Yes	Environmental Law violation (2011)	
Environmental fines	Yes	Clearing native vegetation without authorization	BRL 15,000
Natural Reserves	Yes	APA do Rio Preto	
Indigenous Lands	No	-	
Priority for biodiversity conservation	Extremely high		
Ownership			
Company group	Canabrava Agropecuária		
Other linked properties	30 farms - total 87,500 ha in a contiguous area in Formosa do Rio Preto (BA). In Uberaba (MG): Fazenda Jurema. In Parata (MG): Fazenda Piracan		
Supply Chain			
Main commodity	Soy and cotton		
Confirmed supply chain relation	Yes		
Soy	Main traders in municipality	Bunge (28%); ALZ Grãos (25%); Cargill (6%); Horita (5%); and Domestic Consumption (36%). In 2017, ranked 2nd in soy production in Brazil.	
	Warehouses within 50 km radius	32 warehouses, e.g.: 4 owned by Bunge (151,200 MT), 1 owned by ALZ Grãos (50,000 MT) and 1 owned by Cargill (50,000 MT)	
	Supply chain details	Linked farm Fazenda Santa Maria (Formosa do Rio Preto) supplied soy to Bunge (2017)	
Beef	Main traders in municipality	JBS (100%)	
	Slaughterhouses sourcing from municipality	12 slaughterhouses in Bahia, including: 1 owned by JBS (Itapetinga)	
	Supply chain details	-	
Other supply chain details	-		

Canabrava Agropecuária is one of the largest breeders of American Quarter Horses in Brazil. Based in Uberaba (MG), the company was established in 1971 by Ferdinando José de Assumpção (deceased in 2018) and is now owned by his son Mario Fernando Palmério Assumpção (1). Canabrava Agropecuária has links to Chongqing Grain Group and has the intention to attract Chinese groups for investment in the agribusiness sector in Uberaba (MG) (2). Currently, Canabrava Agropecuária holds BRL 9.7 million in debts with the Brazilian government (3).

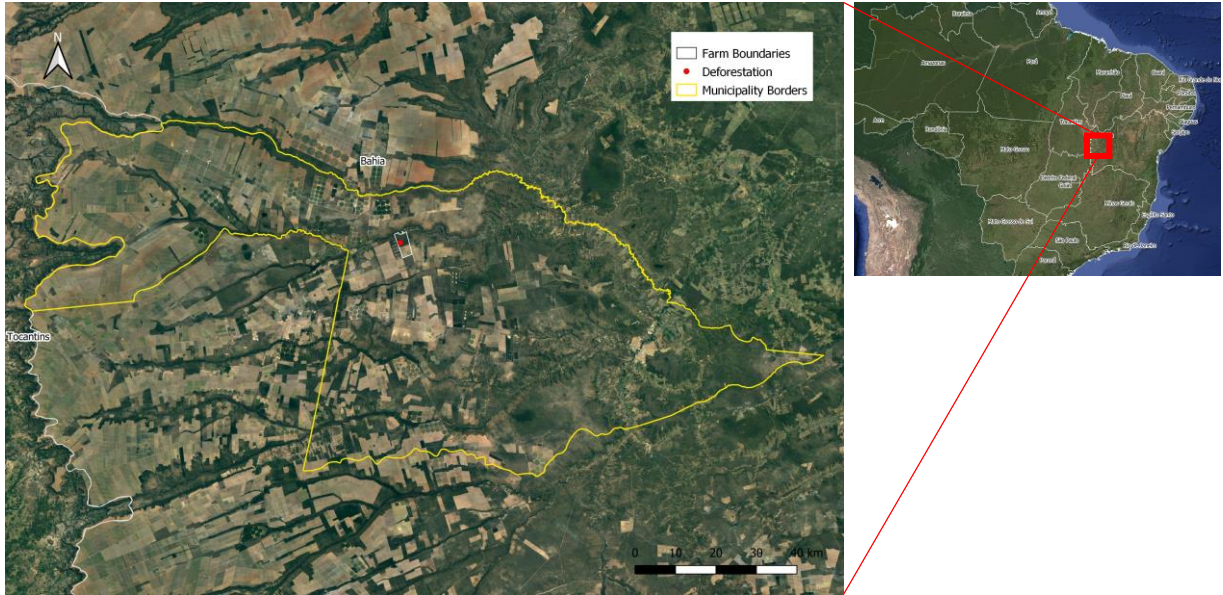
(1) <http://cbonline.com.br>

(2) <http://g1.globo.com/minas-gerais/triangulo-mineiro/noticia/2017/01/interessado-no-potencial-do-triangulo-mineiro-grupo-chines-visita-uberaba.html>

(3) <https://www.listadevedores.pgfn.gov.br/>

12. Fazenda Espírito Santo (Barreiras, Bahia)

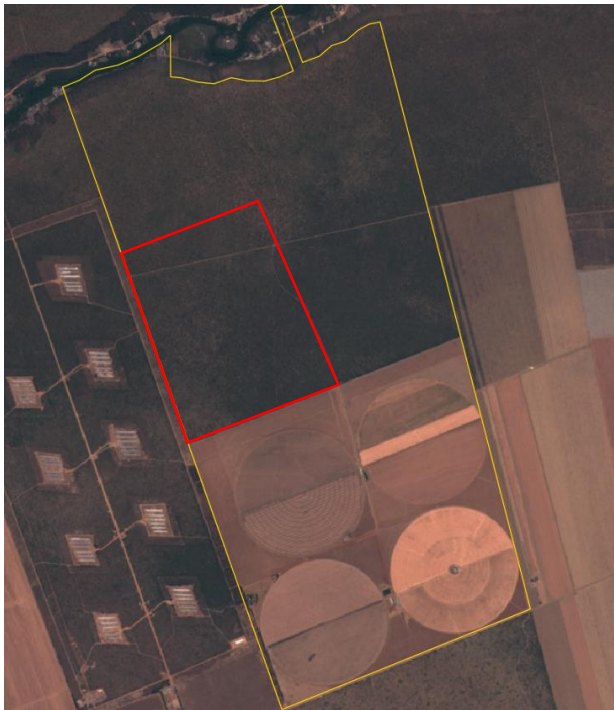
Property Location



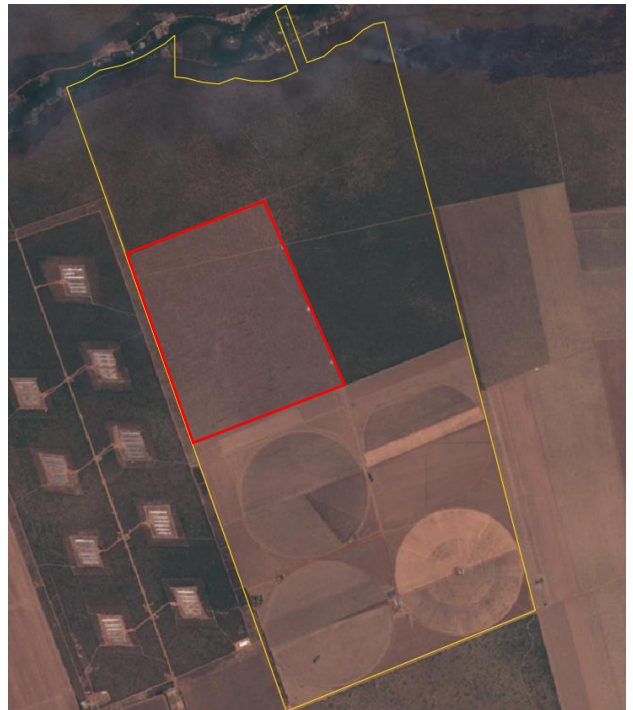
Yellow border – boundary of Barreiras (Bahia) / White border – boundary of Fazenda Espírito Santo / Red dot – location of cleared area

Alert Imagery (before and after clearance)

02-Sep-19



12-Oct-19



12. Fazenda Espírito Santo (Barreiras, Bahia)

General Information		
Property; Registry	Fazenda Espírito Santo	3010350147027
Size (ha); Coordinates	1,694	-45.53602, -11.90103
Land Clearance		
Period of clearing	02 Sep to 12 Oct 2019	
Size (ha); Coordinates	290	-45.54363, -11.89715
Inside Forest Code protected areas	No	-
Type of vegetation	Savanna Park	
Legal Status		
Embargoes	No	-
Environmental fines	No	-
Natural Reserves	Yes	APA do Rio de Janeiro
Indigenous Lands	No	-
Priority for biodiversity conservation	Very high	
Ownership		
Company group	Laticínios Faedo leases the property from Dasilveira South America	
Other linked properties	No other linked properties found	
Supply Chain		
Main commodity	Soy	
Confirmed supply chain relation	No	
Soy	Main traders in municipality	ADM (25%); Gavillon (25%); Cargill (14%); COFCO (11%); and Domestic Consumption (25%). In 2017, ranked 3rd in soy production in Bahia.
	Warehouses within 50 km radius	88 warehouses, e.g.: 12 owned by Bunge (1,200,000 MT), 2 owned by Cargill (68,000 MT) and 1 owned by ADM (58,000 MT)
	Supply chain details	-
Beef	Main traders in municipality	JBS (100%)
	Slaughterhouses sourcing from municipality	32 slaughterhouses in Bahia, Sergipe and Alagoas
	Supply chain details	-
Other supply chain details	-	

Dasilveira South America is a company based in Santa Catarina focused on the production of appliances and machinery for the dairy industry (1). In May 2019, Ivan Luiz Faedo received an authorization from the environmental agency of Bahia for clearing 560 hectares of native vegetation within Fazenda Espírito Santo (2), which confirms he is leasing the property from the original owner. Ivan Luiz Faedo owns Laticínios Faedo Nutrilatte, a dairy company in Barreiras (BA) (3). In 2016, he contracted rural insurance for soy production in Barreiras (BA) (3).

(1) <https://www.consultacnpj.com/dasilveira-south-america-ltda/03596294000154>

(2) <http://sistema.seia.ba.gov.br>

(3) <http://www.agricultura.gov.br/assuntos/riscos-seguro/seguro-rural/documentos-produtores-beneficiados/bahia-atualizado-19-07-2019.xlsx/view>

Deforestation and land clearance - Any land use change already classified as loss of native vegetation by deforestation alert systems

Agrarian conflicts - Include conflicts on land tenure, for natural resources (water, forests), slave labor, other crimes, and human right issues

Embargoed areas - Areas where any kind of activity is suspended or not authorized by the Federal Environmental Agency (IBAMA) due to environmental degradation or irregularity

Environmental fines - List of environmental infractions that resulted in fines addressed to the owner of the property where the crimes were found

Forest Code protected areas - Areas defined by the Brazilian Forest Code that have mandatory conservation status in private properties. *Legal Reserves* [80% (Amazonia biome), 35% (Cerrado biome inside Legal Amazon), 20% other areas] and *Permanent Preservation Areas (APP)* linked to water and soil conservation (close to river bases, wetlands, slopes, and high hills). The Legal Reserve and APP areas considered in this report are those self-declared within the Environmental Register System “Cadastro Ambiental Rural – CAR”. In some cases, the CAR was also used to find information on ownership because even if it is a self-declared document, sometimes, it provides the most recent information on the probable ownership of a property.

Illegal deforestation - Any deforestation event happening without an authorization of the state or federal environmental agency or those that are inside a Legal Reserve or a Permanent Preservation Area (APP)

Natural Reserves - Officially recognized Natural Reserves areas according to the National System of Natural Reserves (SNUC – Sistema Nacional de Unidades de Conservação). The SNUC determines who administrates the area - federal, state or local government, or private owner -, and how the natural resources may be used by whom in each of the natural reserves’ categories.

Indigenous lands - Lands under FUNAI (Nacional Foundation for Indigenous People) administration defined as a heritage right of local Indigenous populations where any activity not linked to these groups are not allowed.

Priority for Biodiversity conservation - Brazilian Ministry of Environment (MMA) study listing the Biodiversity hotspots in Brazil and the priority of actions for biodiversity conservation in these areas.

* * * *

The Rapid Response program has received support, in part, from the International Climate and Forest Initiative (NICFI) scheme managed by the Norwegian Agency for Development Cooperation (Norad). This report does not necessarily reflect the standpoints of Norad.

The work of Mighty Earth is supported by Waxman Strategies. Waxman Strategies’ work on forest conservation is funded in part by Aidenvironment. Waxman is required under 22 U.S.C. § 614 to disclose that this material is distributed on behalf of the aforementioned organization, working under grant from the Norwegian Agency for Development Cooperation. Additional information is on file with the Department of Justice, Washington, D.C.