



MIGHTY EARTH



RAPID RESPONSE

Soy & Cattle Report

Report 20

January 2021



Prepared with

aidenvironment
Waxman

Executive Summary

The 9 deforestation cases selected for this Rapid Response report highlight the clearing of native vegetation linked to soy and cattle supply chains in Brazil. Four cases are located in the Cerrado biome, in Bahia and Mato Grosso states, and five cases are located in the Amazon biome, in Mato Grosso and Pará states. The cases cover a total clearance of 53,564 ha of native vegetation (49,034 ha in the Amazon biome, of which 30,024 is located in one single property, and 4,530 ha in the Cerrado biome.)

The 9 cases of native vegetation clearance presented in this report were selected through the analysis of deforestation alerts data from DETER (Brazil's System for Monitoring Deforestation in Real Time) and PRODES (Brazil's Program for Deforestation Calculations) observed between September 5 and 23, 2020. Native vegetation clearance alerts considered in this report were visually confirmed.

Cases and clearance (ha) per municipality

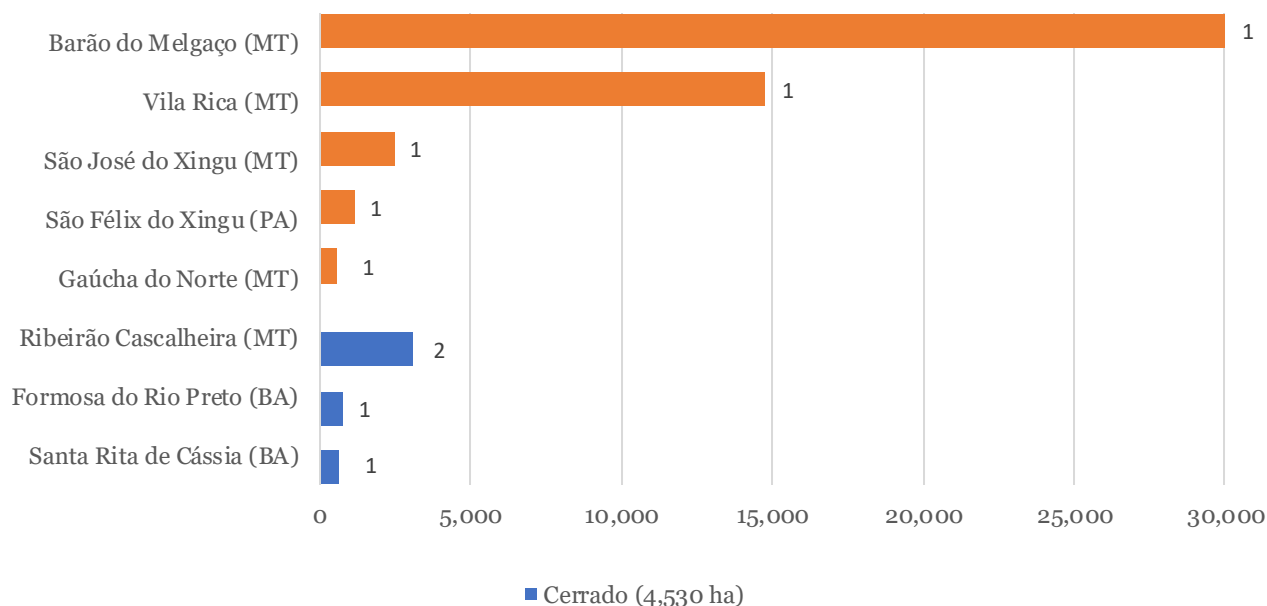


Table of Contents

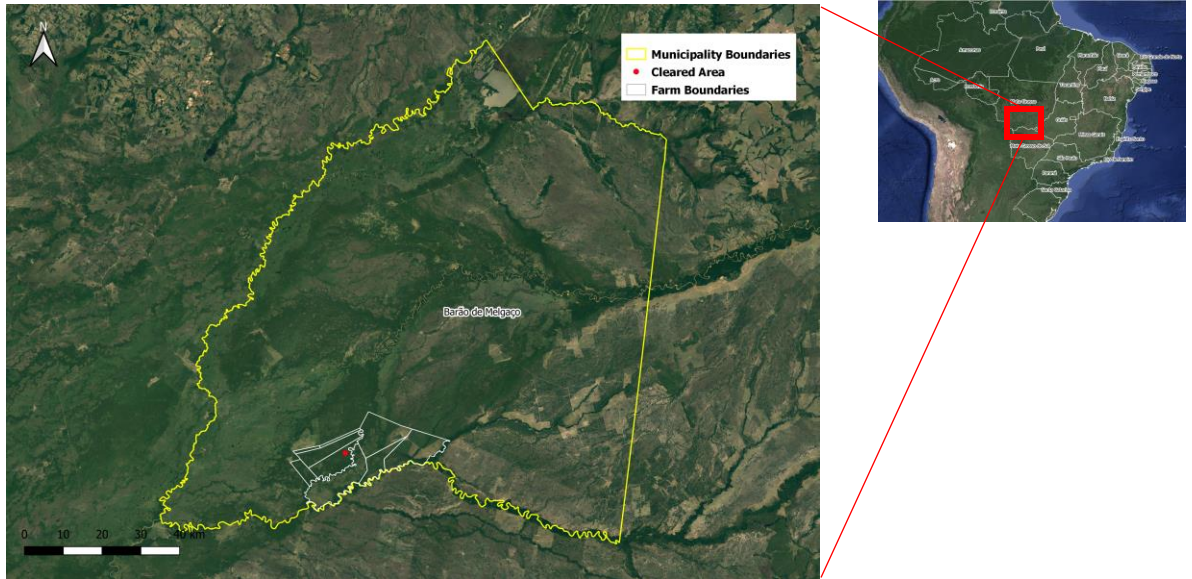
	Amazon biome	Supply chain link (level of certainty)*	Soy trader / Beef processor	Page
1.	Fazenda Pindaival Barão de Melgaço (Mato Grosso)	Medium	Marfrig, JBS, Minerva	4
2.	Fazenda Pontal do Rio Areia II Vila Rica (Mato Grosso)	Low / High	Glencore / JBS	7
3.	Fazenda Aliança and Fazenda Nova Aliança São José do Xingu (Mato Grosso)	Medium	JBS	9
4.	Fazenda Gamela São Félix do Xingu (Pará)	Medium	Marfrig	11
5.	Fazenda Vó Jovita Gaúcha do Norte (Mato Grosso)	Low / High	Cargill, Bunge / JBS, Marfrig	14
Cerrado biome				
6.	Fazenda Sevilha I and Fazenda Sevilha II Ribeirão Cascalheira (Mato Grosso)	-	-	17
7.	Fazenda Santana Ribeirão Cascalheira (Mato Grosso)	High	JBS, Marfrig	20
8.	Fazenda Santo Cristo II Formosa do Rio Preto (Bahia)	High / Low	Cargill / JBS	22
9.	Fazenda Sobradinho Santa Rita de Cássia (Bahia)	-	-	25

*According to the qualitative research conducted on each case in the report

1. Fazenda Pindaival

Barão de Melgaço (Mato Grosso)

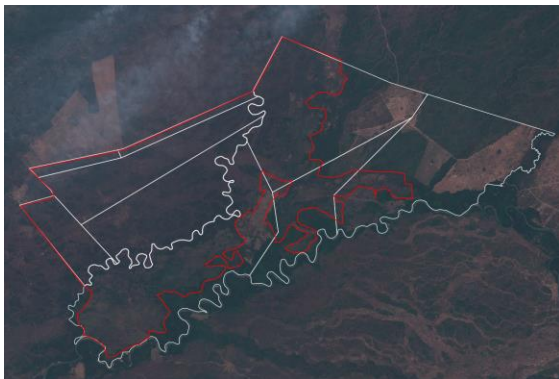
Property Location



Yellow border – boundary of Barão do Melgaço (Mato Grosso)/ White border – boundary of Fazenda Pindaival / Red dot – location of cleared area

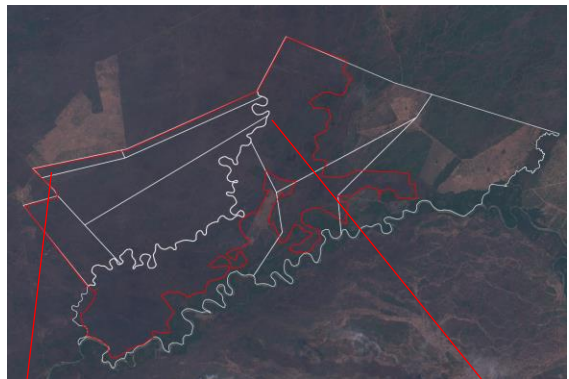
Alert Imagery (before and after clearance)

24 Aug 2020



Source: European Union, contains modified Copernicus Sentinel data 2 020, processed with EO Browser

18 Oct 2020



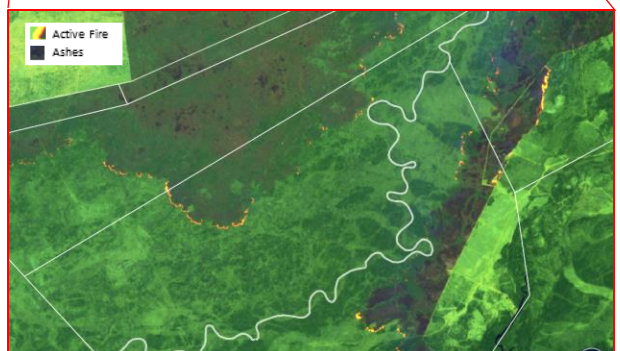
Source: European Union, contains modified Copernicus Sentinel data 2 020, processed with EO Browser

Fires on 29 Aug 2020



Source: European Union, contains modified Copernicus Sentinel data 2 020, processed with EO Browser

Fires on 03 Sep 2020



1. Fazenda Pindaival

Barão de Melgaço (Mato Grosso)

General Information			
Property; Registry; CAR	Fazenda Pindaival		9040230065300
	CAR	-	
Size (ha); Coordinates	58,339	-56.29623, -17.17043	
Land Clearance			
Period of clearing	24 Aug to 18 Oct 2020		
Size (ha); Coordinates	30,024	-56.27134, -17.14809	
Inside Forest Code protected areas	Yes	30,024 ha inside declared Legal Reserve and APP	
Type of vegetation	Woody-grass Savanna		
Legal Status			
Embargoes	No	-	
Environmental fines	No	-	-
Natural Reserves	No	-	
Indigenous Lands	No	-	
Priority for biodiversity conservation	Very high		
Ownership			
Company group	J Mansur Pecuária e Participações, Lomapora Participações Societárias, Rio Azul Pecuária		
Other linked properties	5 other properties, totaling at least 9,952 ha. In Camapuã (MS): Fazenda Império (unknown area). In Campo verde (MT): Fazenda Pocinho (unknown area). In Poxoréo (MT): Fazenda Vitória (unknown area). In Santo Antônio do Leverger (MT): Fazenda Pedra Grande (unknown area). In Barão do Melgaço (MT): Fazenda Piranhas (9,952 ha)		
Supply Chain			
Main commodity	Beef		
Confirmed supply chain link, level of certainty, and trader	Yes	Medium	Marfrig, JBS, Minerva
Soy	Main exporters (municipality)	-	
	Warehouses within 50 km radius	No warehouses	
	Supply chain details	-	
Beef	Main exporters (municipality)	Minerva (38%), JBS (27%), Marfrig (4%)	
	Slaughterhouses sourcing from municipality	5 different beef processors sourced from Barão de Melgaço in 2019 e.g. 1 owned by JBS in MT (Pedra Preta)	
	Supply chain details	Linked farms Fazenda Vitória (Poxoréo - MT), Fazenda Pedra Grande (Santo Antônio do Leverger - MT) and Fazenda Piranhas (Barão de Melgaço - MT) supplied another linked farm, Fazenda Poçinhos (Campo Verde - MT) that then indirectly supplied 2 slaughterhouses owned by JBS (Pedra Preta - MT, Barra do Garças - MT), 2 slaughterhouses owned by Minerva (Várzea Grande - MT, Paranatinga - MT), and 1 slaughterhouse owned by Marfrig (Paranatinga - MT) through Fazenda Poconos Fartura (Campo verde - MT), owned by Grupo Bom Futuro	
Other supply chain details	-		

J Mansur Pecuária is active in cattle with at least 5 properties in Mato Grosso, and are indirect suppliers to JBS, Minerva and Marfrig (through Fazenda Fartura, owned by Grupo Bom Futuro.) The family is originally from Paraná (1). In 1999, J Mansur Pecuária bought Fazenda Piranhas, also in Barão de Melgaço (MT), from Antonio Raulino de Souza Filho, who passed away years later. In 2017, J Mansur Pecuária filed an "adverse possession" lawsuit arguing that, although it had paid for the property, the company did not have the full ownership of the area. Fazenda Pindaival is mentioned in the lawsuit (2). João Abib Mansur, one of the owners of J Mansur Agropecuária, is also owner of MG Construtora, with several public contracts with the state of Mato Grosso do Sul (3). In 2011, he was honoured with title of "citizen" of Mato Grosso do Sul (4). In 2016, he was called by the Organized Crime Special Working Group (GAECO) to testify in an inquiry of Operation Midas that investigated a corruption scheme involving public contracts signed by the former mayor of Campo Grande (5), but he was not prosecuted in the case.

(1) <https://xeretando.com.br/noticia/ler/13811>

(2) <https://www.jusbrasil.com.br/diarios/164105903/djmt-pri-seg-ter-entrancia-11-10-2017-pg-613?ref=serp>

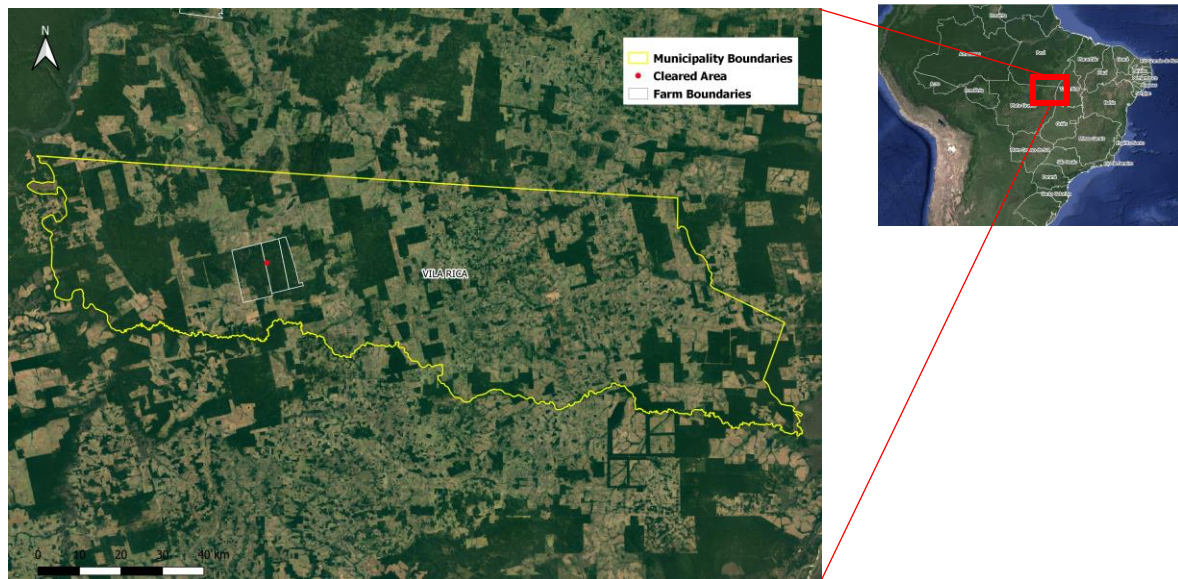
(3) <https://www.midiamax.com.br/geral/2011/governo-contrata-mg-construtora-por-r-55-milhoes-para-obra-em-anel-viario-de-caarapo>

(4) <https://al.ms.gov.br/Noticias/66402/parlamentares-entregam-titulo-a-personalidade-agropecuaria>

(5) <https://paginabrazil.com/joao-amorim-3o-processo-com-2a-fase-de-acao-contra-procurador-da-camara/>

2. Fazenda Pontal do Rio Areia II Vila Rica (Mato Grosso)

Property Location



Yellow border – boundary of Vila Rica(Mato Grosso)/ White border – boundary of Fazenda Pontal do Rio Areia II / Red dot – location of cleared area

Alert Imagery (before and after clearance)

12 Jul 2020



Source: European Union, contains modified Copernicus Sentinel data 2 020, processed with EO Browser

30 Sep 2020



Source: European Union, contains modified Copernicus Sentinel data 2 020, processed with EO Browser

2. Fazenda Pontal do Rio Areia II Vila Rica (Mato Grosso)

General Information			
Property; Registry; CAR	Fazenda Pontal do Rio Areia II		9500500901824
	CAR	MT-5108600-CC283BEC8BDB47FCB58155FBB817F175	
Size (ha); Coordinates	18,116	-51.72987, -9.95030	
Land Clearance			
Period of clearing	12 Jul to 30 Sep 2020		
Size (ha); Coordinates	14,788	-51.74753, -9.94350	
Inside Forest Code protected areas	Yes	12,594 ha inside declared Legal Reserve and APP	
Type of vegetation	Ombrophilous Forest transition		
Legal Status			
Embargoes	No	-	
Environmental fines	No	-	-
Natural Reserves	No	-	
Indigenous Lands	No	-	
Priority for biodiversity conservation	No		
Ownership			
Company group	Goudoi Construtora e Incorporações, Goimal - Gouveia Industrial de Madeiras		
Other linked properties	No linked properties identified		
Supply Chain			
Main commodity	Multiple		
Confirmed supply chain link, level of certainty, and trader	Yes	Low / High	Glencore / JBS
Soy	Main exporters (municipality)	Glencore (100%)	
	Warehouses within 50 km radius	4 warehouses e.g. 1 owned by Agropecuaria Flexas (25,180 MT), 1 by Transcap (12,609 MT)	
	Supply chain details	-	
Beef	Main exporters (municipality)	JBS (79%), CP Comercial (6%), Marfrig (5%)	
	Slaughterhouses sourcing from municipality	4 different beef processors sourced from Vila Rica in 2019 e.g. 3 owned by JBS in MT (Agua Boa, Confresa and Barra do Garças), 1 by Marfrig in MT (Nova Xavantina)	
	Supply chain details	Directly supplied cattle to 1 slaughterhouse owned by JBS (Confresa - MT), in 2018	
Other supply chain details	The property has rural insurances for corn production in 2019 and 2020		

3. Fazenda Aliança and Fazenda Nova Aliança São José do Xingu (Mato Grosso)

Property Location



Yellow border – boundary of São José do Xingu (Mato Grosso) / White border – boundary of Fazenda Aliança and Fazenda Nova Aliança / Red dot – location of cleared area

Alert Imagery (before and after clearance)

05 Sep 2020



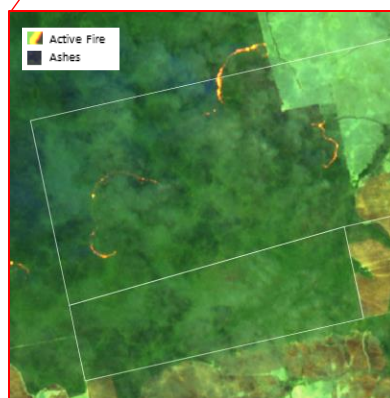
Source: European Union, contains modified Copernicus Sentinel data 2 020, processed with EO Browser

25 Sep 2020



Source: European Union, contains modified Copernicus Sentinel data 2 020, processed with EO Browser

Fires on 15 Sep 2020



Source: European Union, contains modified Copernicus Sentinel data 2 020, processed with EO Browser

3. Fazenda Aliança and Fazenda Nova Aliança São José do Xingu (Mato Grosso)

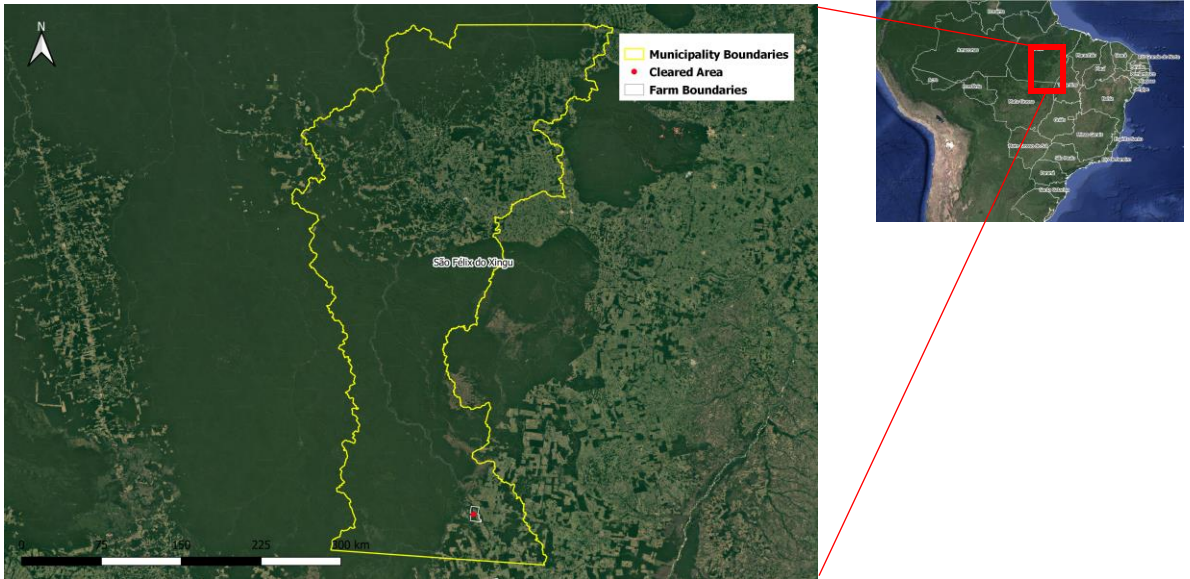
General Information			
Property; Registry; CAR	Fazenda Aliança and Fazenda Nova Aliança		9010590183413
	CAR	MT-5107354-049B63C30186425C9E677785AD4F9C78	
Size (ha); Coordinates	4,976	-51.61661, -10.74676	
Land Clearance			
Period of clearing	05 Sep to 25 Sep 2020		
Size (ha); Coordinates	2,463	-52.55928, -10.74903	
Inside Forest Code protected areas	Yes	1,623 ha inside declared Legal Reserve and APP	
Type of vegetation	Ombrophilous Forest transition		
Legal Status			
Embargoes	No	-	
Environmental fines	Yes (other links)	1 environmental fine for illegal clearing of 206 ha of native vegetation in 2002 in a linked property in Araguaçu (TO)	BRL 20,600
Natural Reserves	No	-	
Indigenous Lands	No	-	
Priority for biodiversity conservation	No		
Ownership			
Company group	Agropecuária Estrela do Xingu, Acauê Agropecuária		
Other linked properties	8 other properties, totaling at least 25,470 ha. In São José do Xingu (MT): Fazenda Escondida (2,650 ha), Fazenda Benjamim (10,720 ha), Fazenda Renata (unknown area), Fazenda dos Vieiras (1,940 ha). In São Félix do Araguaia (MT): Fazenda Marcélia IV (5,710 ha), Fazenda Marcélia V (4,450 ha), Fazenda São Sebastião (unknown area). In Santa Cruz do Xingu (MT): Fazenda VR (unknown area). In Araguaçu (TO): unknown property		
Supply Chain			
Main commodity	Beef		
Confirmed supply chain link, level of certainty, and trader	Yes	Medium	JBS
Soy	Main exporters (municipality)	Amaggi (93%), Cargill (6%)	
	Warehouses within 50 km radius	8 warehouses e.g. 2 owned by Cargill (33,55 MT), 1 by Bunge (49,810 MT)	
	Supply chain details	-	
Beef	Main exporters (municipality)	JBS (71%), Minerva (7%), Marfrig (6%)	
	Slaughterhouses sourcing from municipality	4 different beef processors sourced from São José do Xingu in 2019 e.g. 3 owned by JBS in MT (Água Boa, Confresa and Barra do Garças), 1 by Marfrig in MT (Nova Xavantina)	
	Supply chain details	Indirectly supplied cattle to 2 slaughterhouses owned by JBS (Confresa - MT, Barra do Garças - MT), in 2019, through the linked property Fazenda dos Vieiras (São José do Xingu - MT)	
Other supply chain details	-		

The company Acauê Agropecuária is registered in São José do Xingu (PA) and received public investments from the Amazon Investment Fund (FINAM/SUDAM) to implement agriculture in the Araguaia Valley. The project was discovered to be inoperative, leading to a crime investigation requested by government of the state of Mato Grosso (1).

(1) http://www.al.mt.gov.br/docs/doc_3918.pdf

4. Fazenda Gamela São Félix do Xingu (Pará)

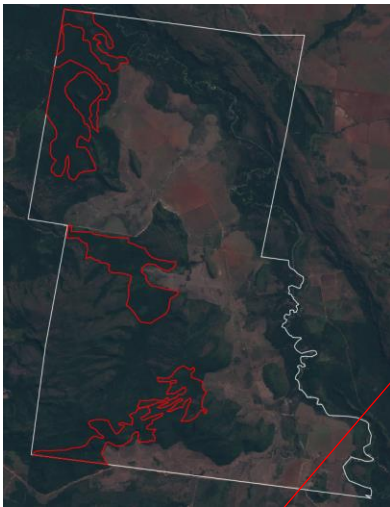
Property Location



Yellow border – boundary of São Félix do Xingu (Pará)/ White border – boundary of Fazenda Gamela / Red dot – location of cleared area

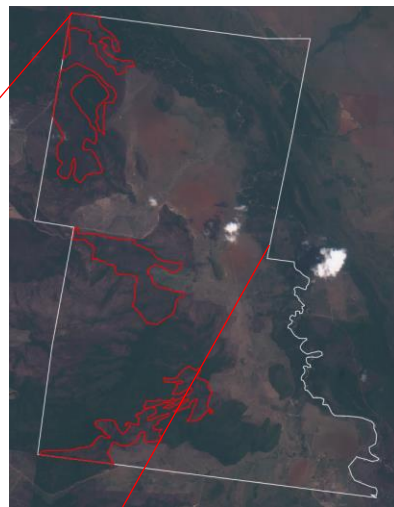
Alert Imagery (before and after clearance)

12 Jul 2020



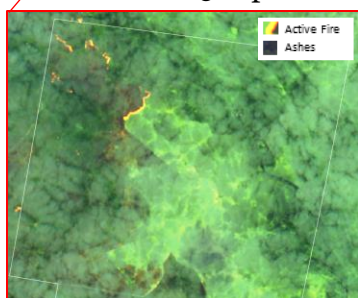
Source: European Union, contains modified Copernicus Sentinel data 2020, processed with EO Browser

20 Oct 2020



Source: European Union, contains modified Copernicus Sentinel data 2020, processed with EO Browser

Fires on 15 Sep 2020



Source: European Union, contains modified Copernicus Sentinel data 2020, processed with EO Browser

4. Fazenda Gamela

São Félix do Xingu (Pará)

General Information			
Property; Registry; CAR	Fazenda Gamela		9501733492327
	CAR	PA-1507300-489E2FAFF9E94598A24D5085AF2604B1	
Size (ha); Coordinates	10,870	-51.90000, 9.33963	
Land Clearance			
Period of clearing	12 Jul to 20 Oct 2020		
Size (ha); Coordinates	1,154	-51.91180, -9.33959	
Inside Forest Code protected areas	Yes	1,154 ha inside declared Legal Reserve and APP	
Type of vegetation	Ombrophilous Open Forest		
Legal Status			
Embargoes	Yes (other links)	2 embargoes for illegal clearing of native vegetation and use of fire without authorization (644 ha embargoed in their bordering property Fazenda Brusque do Xingu, in 2012; 231 ha embargoed in the linked property Fazenda Santa Teresinha II, in 2011)	
Environmental fines	Yes (other links)	2 fines: 1 for illegal deforestation of 1,065 ha in Fazenda Brusque do Xingu, in 2012; and 1 for illegal use of fire in Fazenda Santa Teresinha II, in 2011	BRL 7,070,000
Natural Reserves	Yes	Next to Indigenous Territory Menkragnoti (Kayapó)	
Indigenous Lands	No	-	
Priority for biodiversity conservation	No		
Ownership			
Company group	Agropecuária Umuarama, Agropecuária Novo Norte		
Other linked properties	16 farms, totaling at least 46,973 ha. In São Félix do Xingu (PA): Fazenda Flor da Mata (4,453 ha), Fazenda Souza (3,283 ha), Lote 26G (3,094 ha). In Canaã dos Carajás (PA): Fazenda Lagoa das Antas (32,584 ha), Fazenda Pouso do Sol (2,150ha), Sítio SH36, 37, 38, 39 and 40 (465 ha). In Xinguara (PA): Fazenda Pedra Branca (944 ha). In Jacareacanga (PA): Fazenda Boi Verde (unknown area). In Vila Bela de Santíssima Trindade (MT): Fazenda Campo Alegre, Fazenda São Francisco e São Sebastião do Guaporé, Fazenda Marambaia, Fazenda Birigui (all unknown area). In Nova Bandeirantes (MT): Fazenda Santa Luzia (unknown area). In Nova Santa Helena (MT): Fazenda Santa Laura Vicuñas and Fazendas Reunidas (all unknown area)		
Supply Chain			
Main commodity	Beef		
Confirmed supply chain link, level of certainty, and trader	Yes	Medium	Marfrig
Soy	Main exporters (municipality)	Domestic Consumption (100%)	
	Warehouses within 50 km radius	5 warehouses in 100 km radius e.g. 1 owned by Agropecuária Três Flexas (25,180 MT), 1 by Transcap (12,609 MT)	
	Supply chain details	-	
Beef	Main exporters (municipality)	Frigol (42%); Marfrig Global Foods (35%); JBS (10%); Mercúrio Alimentos (5,5%); Xinguara Indústria e Comércio (2,5%); others (5%)	
	Slaughterhouses sourcing from municipality	25 different meat processors sourced from São Félix do Xingu in 2019 e.g.: 4 owned by JBS (Marabá - PA, Redenção - PA, Santana do Araguaia - PA, Tucumã - PA), 1 owned by Marfrig (Tucumã - PA), 1 owned by Mercurio (Xinguara - PA)	
	Supply chain details	Indirectly supplied Marfrig in Tucumã (PA) through Fazenda Pedra Branca (Xinguara - PA), in 2018	
Other supply chain details	-		

Umuarama group controls four livestock companies with farms in São Felix do Xingu (PA), Canaã dos Carajás (PA), Sapucaia (PA) and Barreiras (BA) (1). The group also owns car dealerships, operates real estate agencies and participates in the management of the Tocantins Export Processing Zone (ZPE Tocantins) (1). In total, 381 workers have been rescued from slave labor conditions in properties linked to Umuarama group (2). In 2017, the most recent operation rescued 23 workers from Fazenda Santa Laura, in Nova Santa Helena, Mato Grosso (3). Luiz Pereira Martins Pires, one of the shareholders of Umuarama group was sentenced to pay a fine for being part of a slave-labor scheme in Southern Pará (4). In 2018, the group was also sentenced to pay a BRL \$6 million fine in a court decision regarding violations of labor law (5).

Umuarama group shareholders are also linked to the Frigorífico Quatro Marcos, a beef processor with links to violations of labor laws in different plants (6). Quatro Marcos went bankrupt in 2008 and afterwards sold some of their plants to JBS. Luiz Pereira Martins Pires, shareholder of Umuarama, is the 101st largest deforesters on the Federal Environmental Agency's (IBAMA) list (7). He has already received BRL \$ 31 million in fines in 2007, 2010 and 2011 - all on linked properties in São Félix do Xingu (PA). Luiz Pereira Martins Pires is also involved in a Federal Police investigation (Operação Reis do Gado) for suspicion of participation in a corruption and money laundering scheme in Tocantins state (8). The prosecution indicates that two farms worth BRL \$60 million were donated to politicians to benefit Umuarama group in public tenders (9). In October 2019, a former governor of Tocantins was arrested by the Federal Police under the same operation (10). Luiz Pereira Martins Pires's son, currently the President of FIETO (the Industry Federation of the State of Tocantins), is also linked to a suspicious corruption scheme involving a judge from Tocantins who received a Hilux pickup truck from Tocantins's former governor, Marcelo Miranda. The pickup truck belonged to a dealership of Umuarama's group in Goiania (11).

In October 2019, the Federal Court of Pará ordered that the federal government did not have to pay for the expropriation of Fazenda Umuarama, a 33,000 hectare property located in the municipality of São Félix do Xingu (PA). This is because federal agents verified, during the survey of land data for the payment of compensation, that “the property records had been defrauded” (12).

(1) <https://www.consultasocio.com/q/sa/agropecuaria-umuarama-ltda>

(2) <https://reporterbrasil.org.br/2006/10/fazendeiro-que-ganhou-r-2-milhoes-por-usar-escravos-volta-a-atacar/>

(3) <https://g1.globo.com/mato-grosso/noticia/operacao-resgata-23-trabalhadores-em-fazenda-de-mt-e-mpt-pede-indenizacao-de-r-100-milhoes.ghtml>

(4) <http://www.prt15.mpt.mp.br/informe-se/boletins/2-uncategorised/677-trabalho-escravo-m-pt-pede-indenizacao-de-r-100-milhoes-e-expropriacao-de-fazenda-onde-23-trabalhadores-foram-resgatados>

(5) <http://prt23.mpt.gov.br/procuradorias/ptm-alta-floresta/1023-grupo-economico-familiar-de-mt-e-condenado-a-pagar-r-6-milhoes-por-trabalho-escravo>

(6) <https://reporterbrasil.org.br/2008/02/decisao-paralisa-atividades-de-frigorifico-do-grupo-quatro-marcos/>

(7) <http://g1.globo.com/Amazonia/0,,MUL778368-16052,00-MINISTERIO+DO+MEIO+AMBIENTE+DIVULGA+LISTA+DOS+MAIORES+DESMATADORES+DA+AMAZO.html>

(8) <https://www.tnnoticias.com.br/estado/pf-nas-ruas-de-palmas-esta-terca-cumprindo-tres-mandados-de-prisao/106169/>

(9) www.mpf.mp.br/to/sala-de-imprensa/docs/Deciso352559.2019.pdf

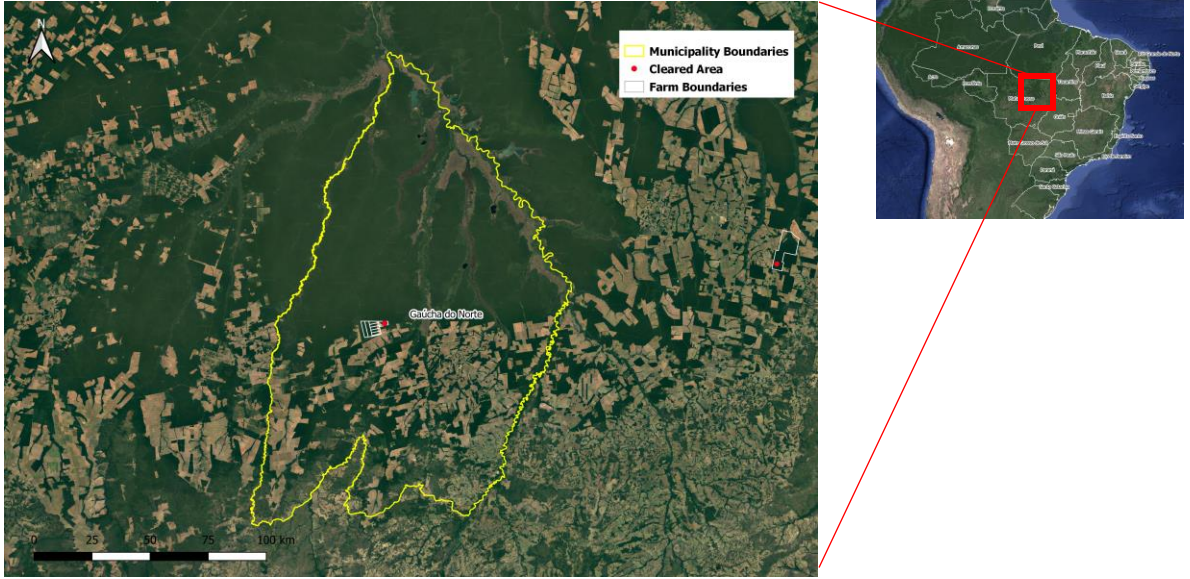
(10) <https://www.tnnoticias.com.br/politica/marcelo-miranda-pai-irmao-e-mais-5-viram-reus-no-processo-da-operacao-reis-do-gado/98300/>

(11) <https://deolhonosruralistas.com.br/2020/06/08/hilux-dada-por-ex-governador-liga-desembargador-do-tocantins-a-desmatadores-do-para/>

(12) https://www.em.com.br/app/noticia/politica/2019/10/26/interna_politica.1096083/agu-aponta-fraude-que-esticava-fazenda-no-para-em-300-kms.shtml

5. Fazenda Vó Jovita Gaúcha do Norte (Mato Grosso)

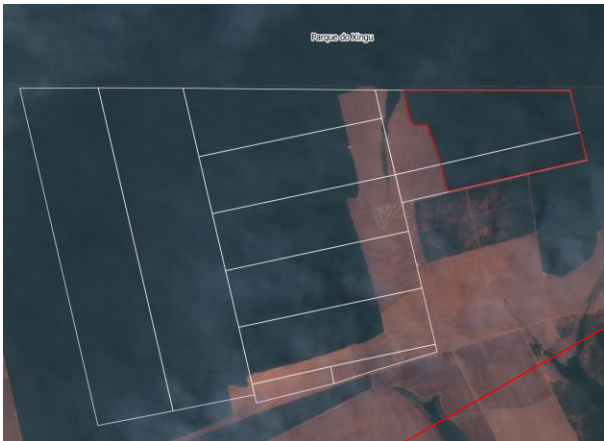
Property Location



Yellow border – boundary of Gaúcha do Norte (Mato Grosso)/ White border – boundary of Fazenda Vó Jovita / Red dot – location of cleared area

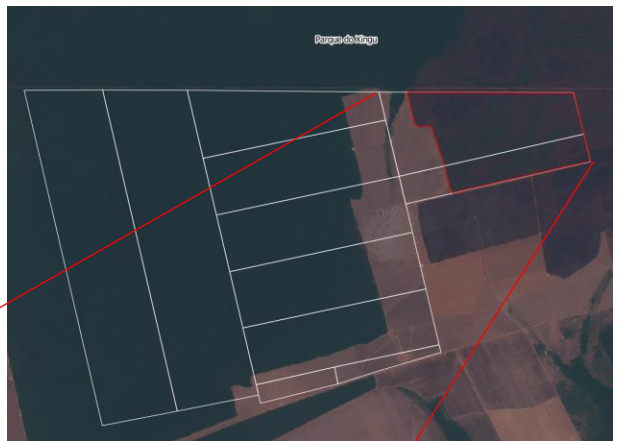
Alert Imagery (before and after clearance)

10 Sep 2020

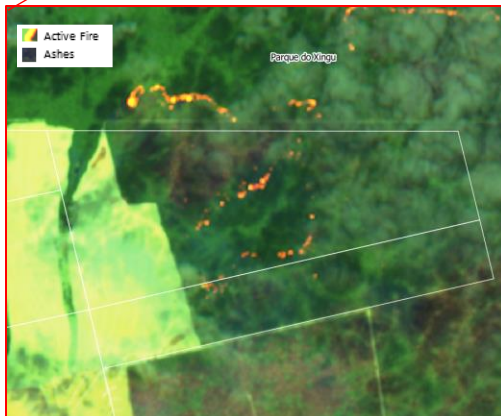


Source: European Union, contains modified Copernicus Sentinel data 2020, processed with EO Browser

30 Sep 2020



Source: European Union, contains modified Copernicus Sentinel data 2020, processed with EO Browser



Fires on 15 Sep 2020

Source: European Union, contains modified Copernicus Sentinel data 2020, processed with EO Browser

5. Fazenda Vó Jovita Gaúcha do Norte (Mato Grosso)

General Information			
Property; Registry; CAR	Fazenda Vó Jovita		9501811891896
	CAR	-	
Size (ha); Coordinates	5,754	-56.59641, -13.02646	
Land Clearance			
Period of clearing	10 Sep to 30 Sep 2020		
Size (ha); Coordinates	605	-53.55808, -13.00876	
Inside Forest Code protected areas	Yes	565 ha inside declared Legal Reserve	
Type of vegetation	Ombrophilous Forest transition		
Legal Status			
Embargoes	Yes (other links)	5 embargoes on linked farms for clearing a total of at least 4,000 ha of native vegetation without authorization, in 2009, 2015 and 2017. Embargoes on linked properties in Gaúcha do Norte (MT): 1 embargo in Fazenda Botuverá, in 2015; 1 embargo in Fazenda Barriga, in 2015; and 1 embargo in Fazenda São Vicente, in 2017	
Environmental fines	Yes (other links)	4 fines for deforestation of 2,740 ha in 2009 and 3 other environmental fines in 2014 on linked properties in Gaúcha do Norte (MT)	BRL \$6,036,000
Natural Reserves	No	-	
Indigenous Lands	Yes	Next to Parque do Xingu	
Priority for biodiversity conservation	No		
Ownership			
Company group	Bissoni Agropecuária, Bissoni Participações Societárias, Ipê Administração e Participações, Grupo Botuverá		
Other linked properties	15 other properties, totaling 39,465 ha. In Gaúcha do Norte (MT): Fazenda Madre Paulina (1,590 ha), Fazenda Santa Paulina (1,960 ha), Fazenda Perotti (2,460 ha), Fazenda Mata Verde II (1,520 ha), Fazenda Brusque I e II (3,165 ha), Fazenda Vô Vicente (5,090 ha), Fazenda Botuverá (1,670 ha), Fazenda Bissoni (940 ha), Fazenda Barriga Verde (4,230 ha), Fazenda Porto Franco II e II (840 ha), Fazenda Boca da Mata (2,550 ha). In Paranatinga (MT): Fazenda Botuverá (10,400 ha). In Tesouro (MT): Fazenda Antinha (80 ha), Fazenda Córrego dos Bois (580 ha). In Guiratinga (MT): Fazenda Alto Alegre (2,350 ha)		
Supply Chain			
Main commodity	Multiple		
Confirmed supply chain link, level of certainty, and trader	Yes	Low / High	Cargill, Bunge / JBS, Marfrig
Soy	Main exporters (municipality)	Cargill (97%)	
	Warehouses within 50 km radius	14 warehouses e.g. 2 owned by Cargill (91,338 MT), 2 by Agricola Alvorada (78,399 MT)	
	Supply chain details	Linked Grupo Botuverá has more than 35,000 ha of crop cultivation	
Beef	Main exporters (municipality)	Marfrig (85%), JBS (9.2%)	
	Slaughterhouses sourcing from municipality	6 different beef processors sourced cattle from Gaúcha do Norte (MT) in 2019, e.g.: 2 owned by JBS (Água Boa and Barra do Garças, both in MT) and 2 owned by Marfrig (Paranatinga and Nova Xavantina, both in MT)	
	Supply chain details	Direct supplied cattle to 1 slaughterhouse owned by JBS (Água Boa - MT) and 1 slaughterhouse owned by Marfrig (Paranatinga - MT) in 2019	
Other supply chain details	In 2014, an unknown property in Gaúcha do Norte sold corn to Bunge in Primavera do Leste and Rondonópolis. Grupo Botuverá is also active in forestry (Eucalyptus)		

This case is connected to Grupo Botuverá, which is active in the crop production, cattle, reforestation, and transportation industries (1). The Bissoni family, owner of Grupo Botuverá, is known in the agribusiness sector for having more than 30,000 hectares in crop plantations and more than 5,000 cattle herds (2). Vicente Bissoni, Botuverá's administrative and financial director, is a former planning and control manager at Bunge, where he worked for almost 5 years (3). A linked property, Fazenda Botuverá, also in Gaúcha do Norte (MT), has a community of more than 140 employees and their families live in a small village inside the property, which includes a school and a medical centre (4). In July 2020, an accidental fire event took place in Fazenda Botuverá (5).

Grupo Botuverá is particularly powerful in the transportation sector, leading local associations and unions (6) (7). Botuvera's transportation company was accused by labor auditors of fraud related to the records of a trucker who died in an accident in April 2014. The trucker worked more than 12 hours per day, seven days a week, even on vacation days (8). The Bissoni family is closely related to the former national deputy Adilton Sachetti and participates actively in the local politics of the Rondonópolis municipality (9). In 2014, Santo Nicolau Bissoni donated BRL \$50,000 to Sachetti's electoral campaign (10), and in 2016, Adelino Bissoni became the president of Sachetti's party, PSB, in Rondonópolis (11).

(1) <http://botuvera.com/home>

(2) <http://gauchanews.com.br/gaucha-do-norte/grupo-botuvera---a-historia-do-agricultor-que-achou-a-solucao-antes-do-problema-aparecer/7898864>

(3) <https://www.linkedin.com/in/vicente-bissoni-402b243a/>

(4) <http://g1.globo.com/mato-grosso/agrodebate/noticia/2014/05/familias-optam-por-vida-tranquila-em-comunidade-rural-de-mato-grosso.html>

(5) http://www.aguabonews.com.br/noticias/exibir.asp?id=23594¬icia=gaucha_do_norte_-_mais_de_150_hectares_de_palha_de_milho_sao_destruidos_durante_incendio_em_fazendas

(6) <https://www.tribunamt.com.br/2013/01/17/empresario-glomir-bissoni-e-o-novo-presidente-da-ate/>

(7) <https://www.tribunamt.com.br/2020/01/10/trevao-transtornos-continuam-e-usuarios-esperam-viaduto/>

(8) <https://reporterbrasil.org.br/2015/03/transportadoras-escondem-jornadas-perigosas-ao-volante/>

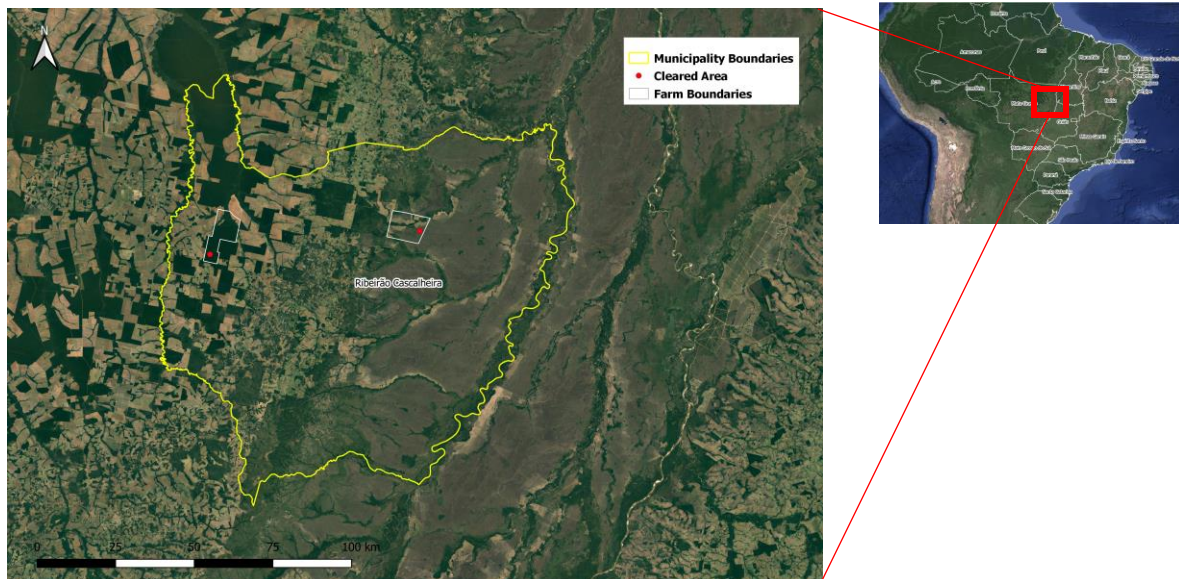
(9) <https://www.rdnews.com.br/blog-do-romilson/conteudo/conteudos/114831>

(10) <https://reporterbrasil.org.br/2018/01/maioria-dos-deputados-recebeu-doacao-de-desmatadores-como-isso-reflete-na-sua-atuacao/>

(11) <https://www.agoramt.com.br/2016/08/adelino-bissoni-e-astrid-sachetti-passam-com-andar-o-psb/>

6. Fazenda Sevilha I and Fazenda Sevilha II Ribeirão Cascalheira (Mato Grosso)

Property Location



Yellow border – boundary of Ribeirão Cascalheira (Mato Grosso)/ White border – boundary of Fazenda Sevilha I and Sevilha II / Red dot – location of cleared area

Alert Imagery (before and after clearance)

07 Sep 2020



Source: European Union, contains modified Copernicus Sentinel data 2020, processed with EO Browser

17 Oct 2020



Source: European Union, contains modified Copernicus Sentinel data 2020, processed with EO Browser



Fires on 12 Sep 2020

Source: European Union, contains modified Copernicus Sentinel data 2020, processed with EO Browser

6. Fazenda Sevilha I and Fazenda Sevilha II Ribeirão Cascalheira (Mato Grosso)

General Information			
Property; Registry; CAR	Fazenda Sevilha I and Fazenda Sevilha II	9014740006200	
Size (ha); Coordinates	10,316		-51.96118, -12.71326
Land Clearance			
Period of clearing	07 Sep to 17 Oct 2020		
Size (ha); Coordinates	2,213		-51.99535, -12.77243
Inside Forest Code protected areas	Yes	2,213 ha inside declared Legal Reserve	
Type of vegetation	Ombrophilous Forest transition		
Legal Status			
Embargoes	No	-	
Environmental fines	No	-	-
Natural Reserves	No	-	
Indigenous Lands	No	-	
Priority for biodiversity conservation	Very high		
Ownership			
Company group	Agro Pecuária Noirumbá, Atlantis Consultoria e Assessoria Internacional, Taquari Agro Comercial		
Other linked properties	2 other properties, totaling at least 14,915 ha. In Ribeirão Cascalheira (MT): Fazenda Campina Verde (5,315 ha); Fazenda Torção de Ouro (unknown area). In Canarãna (MT): Fazenda São Pedro (9,600 ha)		
Supply Chain			
Main commodity	Soy		
Confirmed supply chain link, level of certainty, and trader	No	-	-
Soy	Main exporters (municipality)	CHS (100%)	
	Warehouses within 50 km radius	31 warehouses e.g. 1 owned by ADM (62,359 MT), 3 by Amaggi (188,690 MT), 1 by Bunge (63,250 MT), 1 by Cargill (58,210 MT), 1 by LDC (83,819 MT)	
	Supply chain details	-	
Beef	Main exporters (municipality)	JBS (90%), Marfrig (5%), others (5%)	
	Slaughterhouses sourcing from municipality	5 different beef processors sourced from Ribeirão Cascalheira in 2019 e.g. 3 owned by JBS in Mato Grosso (Água Boa, Barra do Garcas and Confresa), 2 owned by Marfrig in MT (Paranatinga and Nova Xavantina)	
	Supply chain details	-	
Other supply chain details	-		

6. Fazenda Sevilha I and Fazenda Sevilha II Ribeirão Cascalheira (Mato Grosso)

Fazenda Sevilha is in a region known for land conflicts and disputes over land ownership. There is a lawsuit on the ownership of a portion of Fazenda Sevilha I and II because of controversies over property ownership documents. Allegedly, the property was illegally occupied and in August 2020 Agropecuária Noirumbá received a court order in favour of removing the occupiers (1). Antônio de Toledo Lara Neto, the owner of Agropecuária Noirumbá was previously a cattle producer in São Paulo and shifted to sugarcane production in 2003 (2). He is also involved in horseracing (3).

In 2007, Agropecuária Noirumbá filed a lawsuit against a farmer who set fire on his own property and the fire reached Fazenda Sevilha causing material and financial damages. At that time, part of the property was leased to Arantes Alimentos (linked to Premium Foods), which was a large meat company (4), but declared bankruptcy in 2019 (5). In 2011, the Public Prosecutor's Office of Mato Grosso state filed a lawsuit against Agropecuária Noirumbá for illegal deforestation on Fazenda Sevilha (I and II). Agropecuária Noirumbá was convicted and ordered to restore the cleared area, to pay a fine, and the company was blocked from receiving loans from public banks. However, Agropecuária Noirumbá contested the court decision stating that it was not the effective owner of the area, and the case is still unresolved (6). The owner of Agropecuária Noirumbá is involved in another lawsuit due to a conflict regarding the linked property Fazenda São Pedro in Canarãna (MT). The lawsuit was filed by Pedro Nardelli and Julia Nardelli, accusing Lara Neto of using armed guards to threaten and remove them from the area (7).

(1) <https://portalquerenciahoje.wordpress.com/2020/08/28/apos-invasao-produtor-rural-da-fazenda-sevilha-aciona-ju-ridico-obtem-liminar-e-aciona-equipe-de-seguranca/>

(2) <https://www.milkpoint.com.br/noticias-e-mercado/giro-noticias/tradicional-produtor-e-selecionador-de-holandes-tr-o-ca-o-leite-pela-cana-16479n.aspx>

(3) <https://www1.folha.uol.com.br/fsp/agrofolh/fa2208200016.htm>

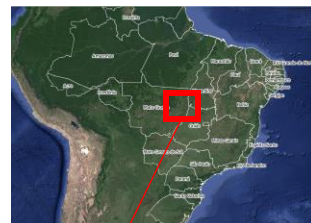
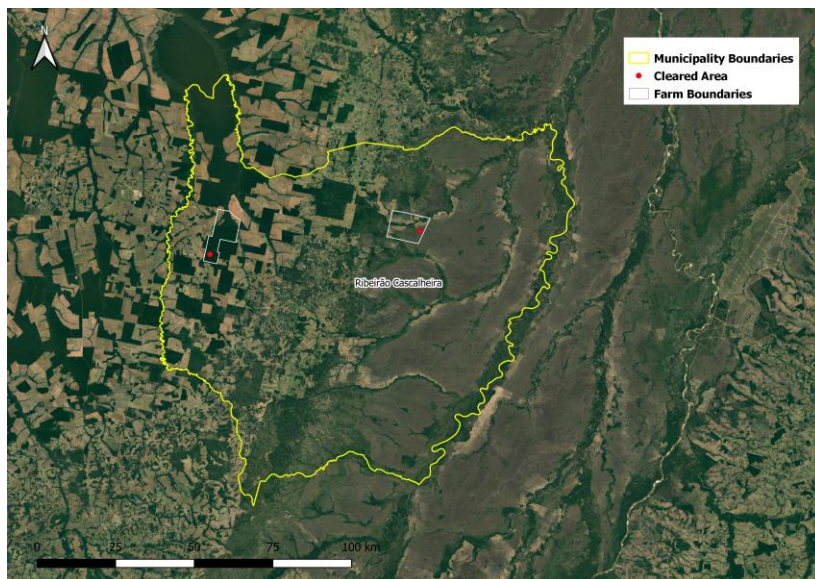
(4) <https://www.jusbrasil.com.br/processos/100584677/processo-n-1508-7720088110079-do-tjmt>

(5) <https://www.diariodaregiao.com.br/conteudo/2019/08/economia/rio-preto-e-regiao/1163228-grupo-arantes-se-reabilita-e-sai-da-fase-judicial-de-recuperacao.html>

(6) <https://www.tjmt.jus.br/ConsultaProcessual>

(7) <https://www.jusbrasil.com.br/processos/99318359/processo-n-729-8320128110079-do-tjmt>

Property Location



Yellow border – boundary of Ribeirão Cascalheira (Mato Grosso)/ White border – boundary of Fazenda Santana / Red dot – location of cleared area

Alert Imagery (before and after clearance)

03 Aug 2020

17 Oct 2020



Source: European Union, contains modified Copernicus Sentinel data 2 020, processed with EO Browser

Source: European Union, contains modified Copernicus Sentinel data 2 020, processed with EO Browser

7. Fazenda Santana Ribeirão Cascalheira (Mato Grosso)

General Information			
Property; Registry; CAR	Fazenda Santana		9011131074845
	CAR	MT-5107180-D175392C84A847789B889F31D1A5104D	
Size (ha); Coordinates	10,219	-51.41530, -12.69122	
Land Clearance			
Period of clearing	03 Aug to 17 Oct 2020		
Size (ha); Coordinates	895	-51.37807, -12.703500	
Inside Forest Code protected areas	No	-	-
Type of vegetation	Savanna Park		
Legal Status			
Embargoes	No	-	-
Environmental fines	No	-	-
Natural Reserves	No	-	-
Indigenous Lands	No	-	-
Priority for biodiversity conservation	Extremely high		
Ownership			
Company group	Dom Pedrito Agropecuária, Teb Empreendimentos e Participações, Odb Empreendimentos e Participações, Monte Verde Empreendimentos, Cozil Equipamentos Industriais, Onix Cook		
Other linked properties	1 other property in Canarãna (MT): Fazenda Dom Pedrito (17,545 ha)		
Supply Chain			
Main commodity	Beef		
Confirmed supply chain link, level of certainty, and trader	Yes	High	JBS, Marfrig
Soy	Main exporters (municipality)	CHS (100%)	
	Warehouses within 50 km radius	12 warehouses e.g. 3 owned by Bom Futuro Agrícola (133,000 MT)	
	Supply chain details	-	
Beef	Main exporters (municipality)	JBS (90%), Marfrig (5%), others (5%)	
	Slaughterhouses sourcing from municipality	5 different beef processors sourced from Ribeirão Cascalheira in 2019 e.g. 3 owned by JBS in Mato Grosso (Água Boa, Barra do Garças and Confresa), 2 owned by Marfrig in MT (Paranatinga and Nova Xavantina)	
	Supply chain details	Fazenda Santana indirectly supplied 2 slaughterhouses owned by JBS (Água Boa - MT and Barra do Garças - MT) and 1 slaughterhouse owned by Marfrig (Nova Xavantina - MT), through a linked property Fazenda Dom Pedrito (Canarãna - MT), in 2018 and 2019	
Other supply chain details	-		

This property's CAR registry is declared by João Carlos Bossle Caminha (1). João is linked to the Berni family, the owners of Fazenda Santa under alert in this case, through its own company, Onix Cook (2) and through the Berni family company Cozil. Both companies are operating in the industrial equipment sector and are located in the same city, Itaquaquecetuba (SP) (3). Cozil is owned by the three Berni brothers Tito, Oneri and Izaías Berni and is an important services supplier to public institutions, earning BRL \$25.8 million from 153 public contracts, most of them with Petrobrás (4). João Carlos Bossle Caminha also competes for public bids in industrial kitchen equipment – and has previously won bids for Cozil's devices (5).

(1) <https://monitoramento.sema.mt.gov.br/simcar/tecnico.app/publico>

(2) <http://inoxcook.com.br/>

(3) <https://cozil.com.br/>

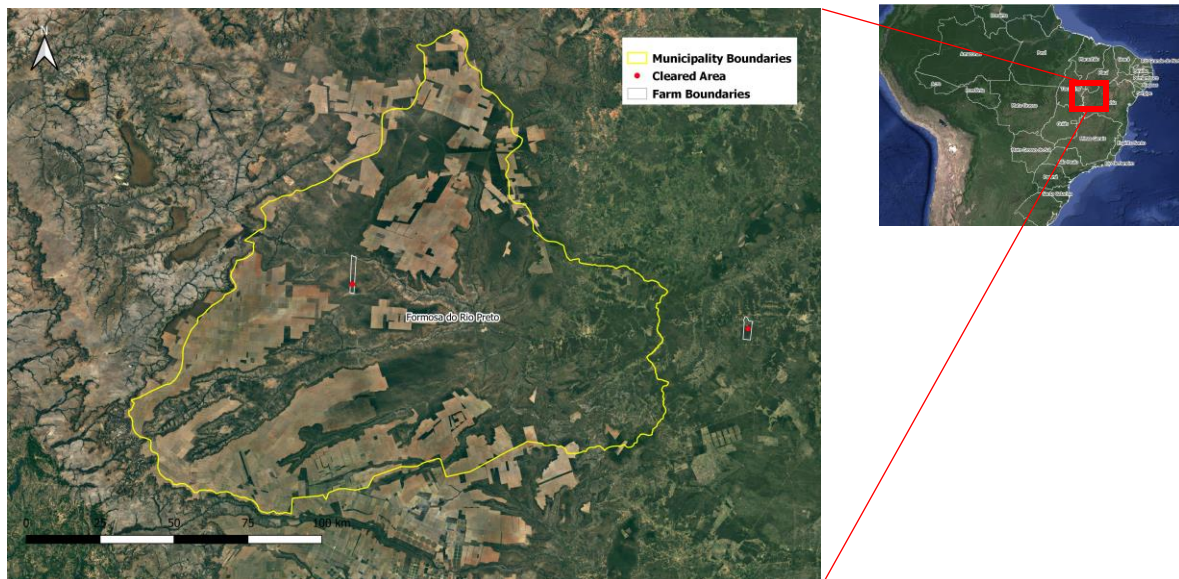
(4) http://portaldatransparencia.cgu.gov.br/licitacoes/33003360/pessoa-ju_ridica/5417788600172?paginaoSimples=true&tamanhoPagina=&offset=&direcaoOrdenacao=asc&colunasSelecionadas=linkDetalhamento%2Corgao%2CunidadeGestora%2CnumeroLicitacao%2CdataAbertura&id=24439146

(5) <http://dap.araquari.ifc.edu.br/wp-content/uploads/sites/3/2016/12/9-Inoxcook.pdf>

8. Fazenda Santo Cristo II

Formosa do Rio Preto (Bahia)

Property Location



Yellow border – boundary of Formosa do Rio Preto (Bahia)/ White border – boundary of Fazenda Santo Cristo II / Red dot – location of cleared area

Alert Imagery (before and after clearance)

03 Jun 2020



Source: European Union, contains modified Copernicus Sentinel data 2020, processed with EO Browser

21 Oct 2020



Source: European Union, contains modified Copernicus Sentinel data 2020, processed with EO Browser

8. Fazenda Santo Cristo II Formosa do Rio Preto (Bahia)

General Information			
Property; Registry; CAR		Fazenda Santo Cristo II	9501658914288
		CAR	BA-2911105-EFB4D3BB429C4ACC818C8B05B2BAF70D; BA-2911105-2F1DBE03818B42B9AEA07E5A4587549E
Size (ha); Coordinates		1,881	-45.92151, -10.86510
Land Clearance			
Period of clearing		03 Jun to 21 Oct 2020	
Size (ha); Coordinates		777	-45.92368, -10.89597
Inside Forest Code protected areas		No	-
Type of vegetation		Wooded Savanna	
Legal Status			
Embargoes		Yes (other links)	3 embargoes on a linked farm (Fazenda Santa Rita de Cássia, Barreiras - BA) for deforestation without proper authorization in 2008
Environmental fines		Yes (other links)	4 environmental fines: 2 on the property Fazenda Santa Rita de Cássia in Barreiras (BA) in 2008 for illegal deforestation of 35.37 hectares, and 2 on a property in São Desidério (BA) in 2008 and 2010, for illegal deforestation of 160 hectares and for non-compliance of an embargo
Natural Reserves		Yes	Área de Proteção Ambiental do Rio Preto
Indigenous Lands		No	-
Priority for biodiversity conservation		Extremely high	
Ownership			
Company group		JPR Agrícola registered in Luís Eduardo Magalhães (BA)	
Other linked properties		9 other properties, totaling 23,410 ha. In Formosa do Rio Preto: Fazenda Santo Cristo (4,983 ha). In Barreiras: Fazenda Santa Rosa I (1,200 ha); Fazenda Santa Rosa II (810 ha); Fazenda Santa Rosa III (332 ha); Fazenda São João (5,631 ha); Fazenda São João III, IV, V e VI (1,546 ha). In Luís Eduardo Magalhães: Fazenda San Michel (625 ha). In Mansidão: Fazenda São João (6,425 ha)	
Supply Chain			
Main commodity		Multiple	
Confirmed supply chain link, level of certainty, and trader		Yes	High / Low Cargill / JBS
Soy	Main exporters (municipality)	Bunge (27%), Horita (19%), Amaggi (11%), Cargill (6%), Domestic Consumption (38%)	
	Warehouses within 50 km radius	29 warehouses e.g. 1 owned by Synagro Comercial Agrícola (800,000 MT), 4 owned by Bunge (123,800 MT), 1 owned by Amaggi (50,000 MT)	
	Supply chain details	Cargill has confirmed a sourcing relationship with this property. In 2014, the same owner applied for rural insurance for soy production in another property in Barreiras (BA)	
Beef	Main exporters (municipality)	JBS (100%)	
	Slaughterhouses sourcing from municipality	9 different beef processors sourced from Formosa do Rio Preto in 2019 e.g. 1 owned by Frigorífico Regional de Alagoinhas, 1 by IPSE	
	Supply chain details	A linked farm, Fazenda São João (Barreiras - BA) is active on cattle supply chain and had 2 embargoes and 2 environmental fines in 2008	
Other supply chain details		-	

8. Fazenda Santo Cristo II Formosa do Rio Preto (Bahia)

Fazenda Santo Cristo II was also a case from Rapid Response Report 12, and after its publication, Cargill has confirmed a trading relationship with the property. The Rambo family, owner of Fazenda Santo Cristo II, is originally from Santo Cristo (RS) (1). One of the family members belongs to the financial council of Bahia's Farmers and Irrigation Association (AIBA) (2) and is listed as a public supplier of "cereals" to the Brazilian Army (unit in Barreiras, Bahia) (3). A linked property in Barreiras (BA), had rural insurance linked to soy production in 2014 (4). There is a possible connection to JPR Agrícola (soy), owned by another member of the Rambo family and based in Luis Eduardo Magalhães (BA). Rambo's family members own a cargo transport company, the Rodo Rambo, based also in Luis Eduardo Magalhães (BA) (5).

In 2017, Ildo João Rambo was prosecuted for environmental fraud on the bordering farm Fazenda Santo Cristo, also in Formosa do Rio Preto, together with Aristides Queiroz Nogueira (6), who was arrested in 2017 for trying to destroy a neighbour's fence related to land grabbing (7). However, the land in Formosa do Rio Preto is under dispute between Aristides Queiroz Nogueira, Ildo João Rambo and Canabrava Agropecuária (8). Canabrava Agropecuária, based in the State of Minas Gerais, was allowed by Inema (the environmental agency of the State of Bahia) to clear 3,519 hectares on an unknown property in Formosa do Rio Preto. Canabrava's CEO is the grandson of a politician and former Brazilian ambassador to Paraguay. He led the negotiations with Chongqing Grain Group Corp, a Chinese state sector of agricultural commodities, to attract investment into a specific region of Minas Gerais, the "triângulo Mineiro." Controller of Universo Verde Agronegócios, Chongqing owns at least 100 thousand hectares of land in Brazil (9). In January 2019, Ildo João Rambo entered with a lawsuit against Ibama in Brazil's Supreme Court (10).

Ildo João Rambo had three embargoed areas for environmental degradation (2014, 2015, and 2017) within its properties in Barreiras (BA). There is an environmental license for "legal" removal of 3,744 ha of native vegetation for the implementation of cattle ranching activities in a bordering farm under the same ownership, Fazenda Santo Cristo, active until 25/07/2019 (11), which could be linked to the deforestation pointed in previous Rapid Response reports 1 and 5 (12, 13). In 2012, Ildo João Rambo received a license to grow eucalyptus in Fazenda São João in Barreiras (BA) (14).

(1) <http://www.novoeste.com/index.php?page=destaque&op=readNews&id=6112>

(2) <https://jornalnovafrenteira.com.br/canais/cidade/assembleia-elege-nova-diretoria-e-o-conselho-fiscal-da-aiba-e-do-instituto-aiba/>

(3) http://compras.dados.gov.br/fornecedores/doc/fornecedor_pf/170807

(4) http://www.agricultura.gov.br/assuntos/riscos-seguro/seguro-rural/documentos-seguro-rural/Bahia_PSR.xlsx

(5) <https://www.brasilcnpj.com/empresa/rodo-rambo-transporte-de-cargas-ltda/c9qAk5qwD>

(6) <https://www.mp.ba.gov.br/sites/default/files/biblioteca/diariojustica/20180504.pdf>

(7) <https://www.blogbahia.com/2017/12/policia-militar-de-formosa-do-rio-preto.html>

(8) https://www.jusbrasil.com.br/diarios/documentos/520424028/andamento-do-processo-n-0000035-5220078050081-reintegracao-manutencao-de-posse-14-11-2017-do-tjba?ref=topic_feed

(9) <https://deolhonosruralistas.com.br/2020/07/22/autorizacoes-para-desmatamento-na-bahia-incluem-gigante-da-celulose-e-fazendeiro-parricida/>

(10) <https://www.jusbrasil.com.br/diarios/documentos/667036885/andamento-do-processo-n-1148-0720164013303-acao-ordinaria-24-01-2019-do-trf1>

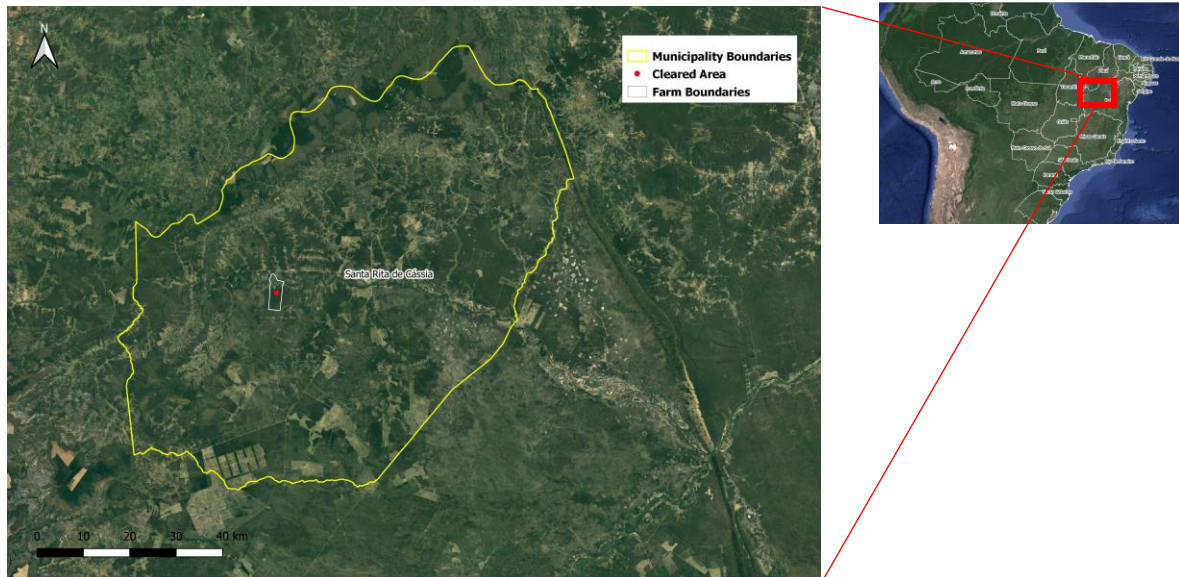
(11) <http://dovirtual.ba.gov.br/egba/reader2>

(12) http://www.mightyearth.org/wp-content/uploads/Rapid-Response_Soy-and-Cattle_Report-1.pdf

(13) http://www.mightyearth.org/wp-content/uploads/Rapid-Response_soy-and-cattle_report-5.pdf#new_tab

(14) <https://www.barreiras.ba.gov.br/diario/pdf/diari01407.pdf>

Property Location



Yellow border – boundary of Santa Rita de Cássia (Bahia)/ White border – boundary of Fazenda Sobradinho / Red dot – location of cleared area

Alert Imagery (before and after clearance)

03 Jun 2020



Source: European Union, contains modified Copernicus Sentinel data 2 020, processed with EO Browser

21 Oct 2020



Source: European Union, contains modified Copernicus Sentinel data 2 020, processed with EO Browser

9. Fazenda Sobradinho

Santa Rita de Cássia (Bahia)

General Information			
Property; Registry; CAR	Fazenda Sobradinho		3010940033442
	CAR	BA-2928406-4F9D4A9E9EC34839B50EB892E280B7AF	
Size (ha); Coordinates	1,878	-44.69713, -11.03535	
Land Clearance			
Period of clearing	03 Jun to 21 Oct 2020		
Size (ha); Coordinates	645	-44.69531, -11.03418	
Inside Forest Code protected areas	No	-	-
Type of vegetation	Deciduous Seasonal Forest		
Legal Status			
Embargoes	No	-	
Environmental fines	No	-	
Natural Reserves	Yes	Área de Proteção Ambiental do Rio Preto	
Indigenous Lands	Yes	Next to the Indigenous Territory Fazenda Jenipapeiro (Atikum)	
Priority for biodiversity conservation	Extremely high		
Ownership			
Company group	Gauay Agropecuária, Frigorífico Ipê		
Other linked properties	11 other properties, totaling 21,069 ha. In Santa Rita de Cássia (BA): Fazenda Santa Jacira (2,842 ha), Fazenda Santa Jacira III (2,245 ha), Fazenda Taquari (1,240 ha), Fazenda Eldorado (1,100 ha), Fazenda Mangabeiras (180ha), Fazenda Conquista (360 ha), Fazenda Alvorada (220 ha), Fazenda Mimosa (262 ha), Fazenda Boa Sorte (225 ha), Fazenda Itaparica (395 ha), Fazenda Ipê (12,000 ha)		
Supply Chain			
Main commodity	Multiple		
Confirmed supply chain link, level of certainty, and trader	No	-	-
Soy	Main exporters (municipality)	Domestic Consumption (100%)	
	Warehouses within 50 km radius	5 warehouses e.g. 1 owned by Canabrava Agrop (3,000 MT)	
	Supply chain details	Has a license for soy cultivation in a linked farm (Fazenda Jatobá, in Santa Rita de Cássia - BA), issued in 2019	
Beef	Main exporters (municipality)	JBS (100%)	
	Slaughterhouses sourcing from municipality	-	
	Supply chain details	Ownership links to the regional slaughterhouse Frigorífico Ipê (Barreiras - BA)	
Other supply chain details	-		

Fazenda Sobradinho owners are linked to Agropecuária Gaunay and Frigorífico Ipê, one of the largest beef processors in operation in Bahia state and with a license for beef exporting (1). Stefan Zambrod, one of the owners of Agropecuária Guanay and CEO of Ipê Group, was the president of the Association of Cattle Breeders from West Bahia (ACRIOESTE) from 2017-2018 (2).

In 2019, an official delegation from Indonesia and Cuba visited Fazenda Ipê, another linked property to this case, to prospect beef imports (3). Fazenda Ipê is a 12,000 hectares property with a 10,000 cattle herd (Nelore and Angus races) in Santa Rita de Cássia (Bahia). The property uses artificial insemination techniques, produces bovine feed from cotton and produces biogas and biodiesel as well (4). Ipê Group also owns Ipê Foods, a store brand for high quality processed beef products (5).

(1) <https://jornalnovafronteira.com.br/destaque/frigorifico-ipe-assume-planta-frigorifica-do-antigo-friobarreiras/>

(2) <http://oestepecuaria.com.br/2018/07/23/pecuaria-cresce-no-oeste-baiano/>

(3) <https://www.cnabrazil.org.br/noticias/delegacao-estrangeira-visita-fazenda-de-pecuaria-de-corte>

(4) <https://www.cnabrazil.org.br/noticias/delegacao-estrangeira-visita-fazenda-de-pecuaria-de-corte>

(5) <https://ipefoods.com.br/quem-somos/>

Glossary

Deforestation and land clearance - Any land use change classified as loss of native vegetation by deforestation alert systems

Agrarian conflicts - Includes conflicts regarding land tenure, natural resources (water, forests), slave labor, and other human rights violations

Embargoed areas - Areas where any kind of activity is suspended or unauthorized by the Federal Environmental Agency (IBAMA) oftentimes due to environmental degradation

Environmental fines - List of environmental infractions that resulted in fines addressed to the owner of the property

Forest Code protected areas - Areas defined by the Brazilian Forest Code that have mandatory conservation status on private properties. These include *Legal Reserves* [80% Amazonia biome, 35% Cerrado biome inside Legal Amazon, 20% other areas] and *Permanent Preservation Areas (APP)* linked to water and soil conservation (close to river bases, wetlands, slopes, and high hills.) The Legal Reserve and APP areas considered in this report are those self-declared within the Cadastro Ambiental Rural (CAR) system – Brazil’s environmental registration system. In some cases, the CAR was also used to find information on ownership because even if it is a self-declared document, sometimes, it provides the most recent information on the probable ownership of a property

Illegal deforestation - Any deforestation event occurring without authorization from the state or Federal Environmental Agency, or any deforestation that is inside a Legal Reserve or Permanent Preservation Area (APP)

Natural Reserves - Officially recognized Natural Reserves according to the National System of Natural Reserves (SNUC – Sistema Nacional de Unidades de Conservação). The SNUC determines jurisdiction of the area - federal, state or local government, or private owner - and how the natural resources may be used by whom in each of the natural reserves’ categories

Indigenous lands - Lands under FUNAI (Nacional Foundation for Indigenous People) where local Indigenous populations have customary rights to the land and outside development is prohibited

Priority for biodiversity conservation - Brazilian Ministry of Environment (MMA) lists the biodiversity hotspots in Brazil and the priority of actions for biodiversity conservation in these areas

* * * *

The Rapid Response program has received support, in part, from the International Climate and Forest Initiative (NICFI) scheme managed by the Norwegian Agency for Development Cooperation (Norad). This report does not necessarily reflect the standpoints of Norad.

The work of Mighty Earth is supported by Waxman Strategies. Waxman Strategies’ work on forest conservation is funded in part by Aid Environment. Waxman is required under 22 U.S.C. § 614 to disclose that this material is distributed on behalf of the aforementioned organization, working under grant from the Norwegian Agency for Development Cooperation. Additional information is on file with the Department of Justice, Washington, D.C.