



MIGHTY EARTH



# RAPID RESPONSE

## Soy & Cattle Report

Report 12  
May 2020



Prepared with

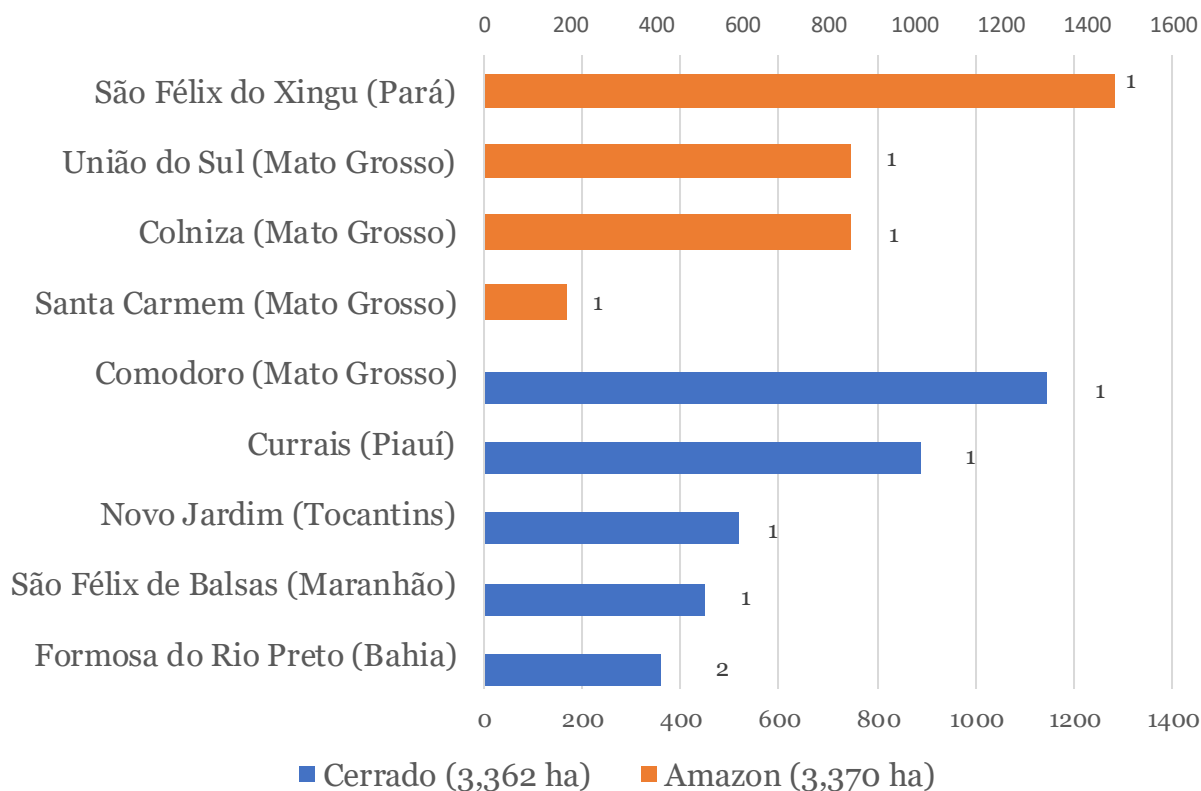
aidenvironment  
**Waxman**

# Executive Summary

This Rapid Response report highlights 10 cases of deforestation within 4 municipalities in Amazon biome and 5 municipalities in Cerrado biome. Four of the selected cases are in the Amazon biome and six are in the Cerrado biome.

The 10 cases of land clearing presented in this report were based on alerts data from DETER (System for Monitoring Deforestation on Real Time) and PRODES (Program for Deforestation Calculation) observed between February 26, 2020 and March 23, 2020. Land clearing alerts considered in this report were visually confirmed.

## Cases and clearance (ha) per municipality



# Table of Contents

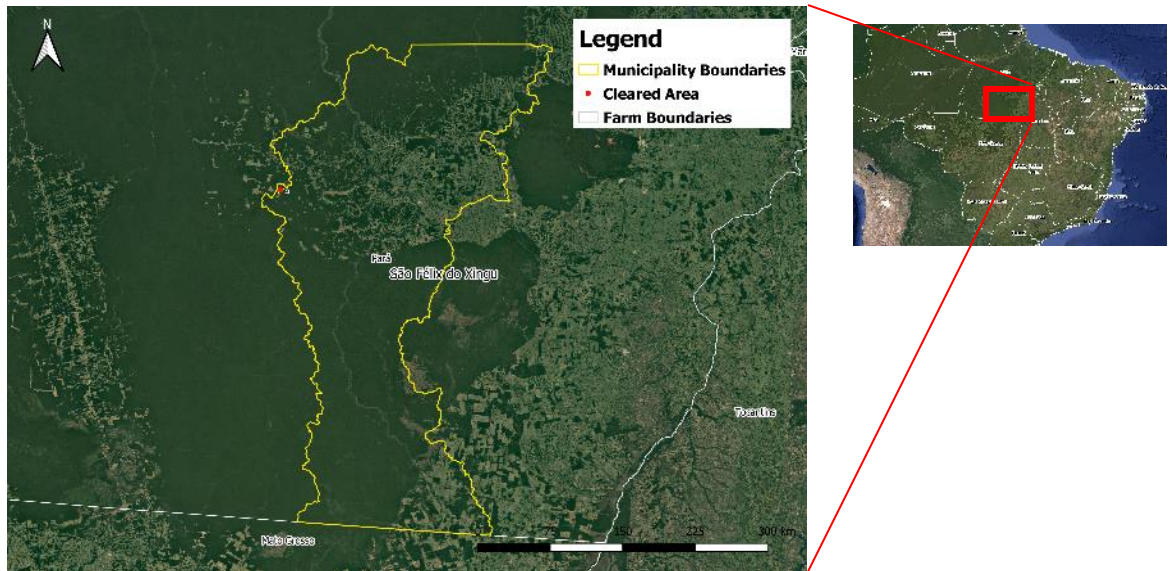
## Amazon biome

1.	<b>Fazenda Tiborna</b> (São Félix do Xingu, Pará)	4
2.	<b>Fazenda Floresta Ramada I, II, III, IV and V - Fazenda Califórnia</b> (União do Sul, Mato Grosso)	6
3.	<b>Fazenda Araguaia - Gleba Escol Norte</b> (Colniza, Mato Grosso)	9
4.	<b>Fazenda Sumatra - Mat 1424, I, II and III</b> (Santa Carmem, Mato Grosso)	14

## Cerrado biome

5.	<b>Fazenda Oeste</b> (Comodoro, Mato Grosso)	17
6.	<b>Fazenda Nossa Senhora Aparecida</b> (Currais, Piauí)	14
7.	<b>Fazenda Morro Branco</b> (Novo Jardim, Tocantins)	20
8.	<b>Fazenda Rã</b> (São Félix das Balsas, Maranhão)	22
9.	<b>Fazenda Triunfo</b> (Formosa do Rio Preto, Bahia)	24
10.	<b>Fazenda Santo Cristo II</b> (Formosa do Rio Preto, Bahia)	27

## Property Location



Yellow border – boundary of São Félix do Xingu (Pará) / White border – boundary of Fazenda Tiborna / Red dot – location of cleared area

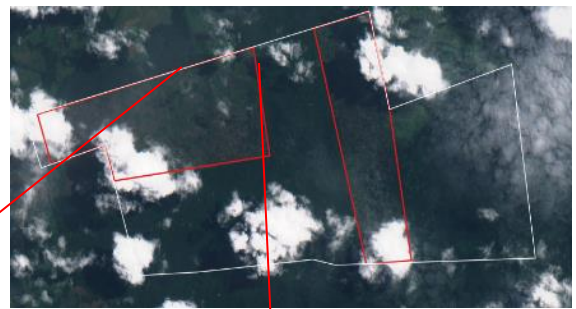
## Alert Imagery (before and after clearance)

8<sup>th</sup> November 2019



Source: European Union, contains modified Copernicus Sentinel data 2019, processed with EO Browser

26th April 2020



Source: European Union, contains modified Copernicus Sentinel data 2019, processed with EO Browser



MapBiomas with PlanetScope images

# 1. Fazenda Tiborna

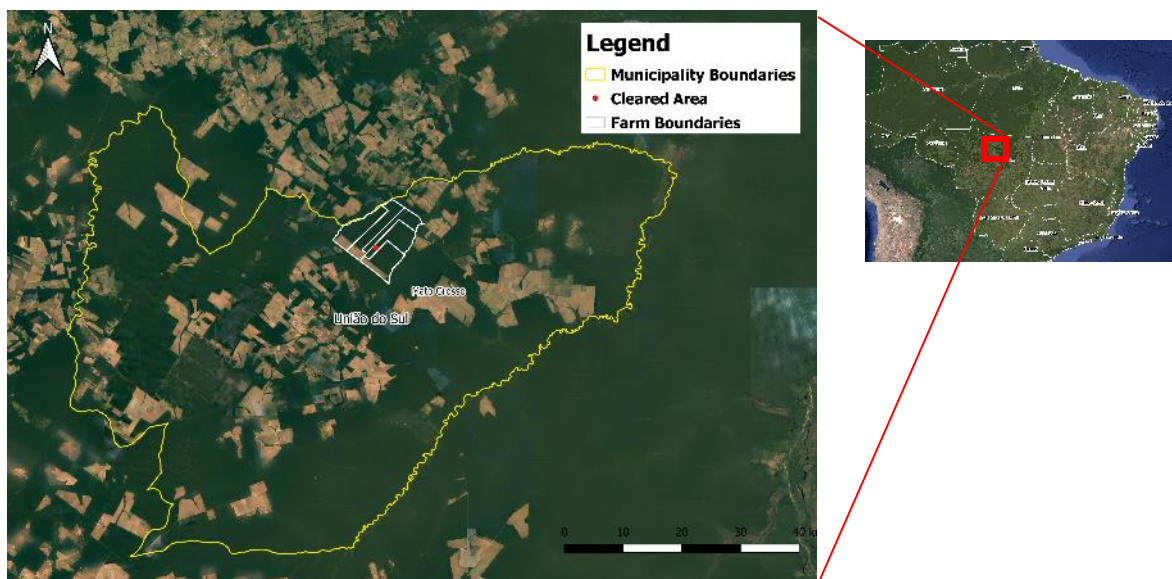
(São Félix do Xingu, Pará)

General Information		
Property; Registry	Fazenda Tiborna	9500172551730
Size (ha); Coordinates	4,350	-6.53586, -53.26444
Land Clearance		
Period of clearing	08 Nov 2019 to 26 Apr 2020	
Size (ha); Coordinates	1,469	-6.52155, -53.28691
Inside Forest Code protected areas	Yes	764 ha inside declared Legal Reserve and APP
Type of vegetation	Ombrophilous Open Forest	
Legal Status		
Embargoes	Yes (other links)	In a linked farm (Fazenda Morro Verde, in São Félix do Xingu - MT) for deforestation without proper authorization in 2012
Environmental fines	No	-
Natural Reserves	Yes	Área de Proteção Ambiental Triunfo do Xingu
Indigenous Lands	No	-
Priority for biodiversity conservation	No	
Ownership		
Company group	Metalúrgica Arantes, registered in Xinguara (PA)	
Other linked properties	3 other properties, totaling at least 3,524 ha. In São Félix do Xingu (PA): Fazenda Morro Verde (3,433 ha). In Canaã dos Carajás and Água Azul do Norte (PA): Fazenda Planalto (91 ha). In São Félix do Xingu (MT): Fazenda Ouro Verde (ha unknown)	
Supply Chain		
Main commodity	Beef	
Confirmed supply chain relation	Yes	
Soy	Main traders in municipality	-
	Warehouses within 50 km radius	-
	Supply chain details	-
Beef	Main traders in municipality	Frigol (42%), Marfrig (35%), JBS (10%), others (13%)
	Slaughterhouses sourcing from municipality	25 different beef processors sourced from Sao Felix do Xingu in 2019 e.g. 4 owned by JBS (Santana do Araguaia, Tucuma, Maraba, Redencao - PA), 1 owned by Marfrig (Tucuma - PA), 2 owned by Frigol SA (Sao Felix do Xingu, Agua Azul do Norte - PA)
	Supply chain details	In 2019 and 2020, through Fazenda São André and Fazenda Jeitosa, both in Xinguara (PA), Fazenda Tiborna indirectly supplied 5 different slaughterhouses, including 1 owned by Mercúrio, in Xinguara (PA). In the same period, Fazenda Tiborna was an indirect cattle supplier to at least 20 other farms through Fazenda São Caetano, in Xinguara (PA). In 2017, Fazenda Tiborna directly supplied cattle to a slaughterhouse owned by Mercúrio, in Xinguara (PA)
Other supply chain details	-	

The owner of this property was linked to a previous case of deforestation in 2016 at Fazenda Morro Verde I, II and III, another cattle ranch bordering Fazenda Tiborna. The owner is also mentioned in an administrative process by Pará Institute of Lands (ITERPA) over a property of a similar size as Fazenda Tiborna (4,356 ha). In the process 2015/400359, ITERPA attested that the land purchase documents issued in name of Jaime Neves Ferreira in 1962 were false (1).

(1) [www.ioepa.com.br/pages/2015/11/04/2015.11.04.DOE\\_29.pdf](http://www.ioepa.com.br/pages/2015/11/04/2015.11.04.DOE_29.pdf)

## Property Location



Yellow border – boundary of União do Sul (Mato Grosso) / White border – boundary of Fazenda Floresta Ramada I, II, III, IV and V - Fazenda Califórnia / Red dot – location of cleared area

## Alert Imagery (before and after clearance)

13<sup>th</sup> February 2020



Source: European Union, contains modified Copernicus Sentinel data 2019, processed with EO Browser

28th April 2020



Source: European Union, contains modified Copernicus Sentinel data 2019, processed with EO Browser



MapBiomias with PlanetScope images

## 2. Fazenda Floresta Ramada I, II, III, IV and V - Fazenda Califórnia (União do Sul, Mato Grosso)

General Information		
Property; Registry	Fazenda Floresta Ramada I, II, III, IV and V (Fazenda Califórnia)	9501902680898
Size (ha); Coordinates	11,320	-11.38411, -54.24468
Land Clearance		
Period of clearing	13 Feb to 28 Apr 2020	
Size (ha); Coordinates	855	-11.40346, -54.25036
Inside Forest Code protected areas	No	-
Type of vegetation	Semidecidual Seasonal Forest	
Legal Status		
Embargoes	No	-
Environmental fines	No	-
Natural Reserves	No	-
Indigenous Lands	No	-
Priority for biodiversity conservation	Extremely high	
Ownership		
Company group	Links to Grupo Scheffer/Bom Futuro, registered in Sapezal (MT)	
Other linked properties	21 other properties, totaling 33,310 ha. In Rondonópolis (MT): Fazenda Imbú (2,640 ha); Fazenda Santa Rosa (470 ha); Fazenda Imbaí (3,000 ha); Nova Esperança (330 ha); Fazenda Ouro Branco (2,590 ha); Fazenda Estrela Dalva (500 ha); Fazenda Nova Esperança I (1,200 ha). In Paranatinga: Caxuxá (1,230 ha); Fazenda Água Limpa (2,660 ha); Fazenda Rosabel (1,660 ha); Fazenda Paraíso (4,230 ha). In Novo Santo Antônio (MT): Fazenda Nova Kênia (3,000 ha). In Barreiras (BA): Fazenda 2001 (988 ha); Fazenda Salvador (929 ha); Fazenda Delta (684 ha); Fazenda JR (1,210 ha); Fazenda Caravelas (676 ha); Fazenda Santa Maria I e II (960 ha); Fazenda Santa Terezinha (670 ha); Fazenda Erva Doce (683 ha). In São Desidério (BA): Fazenda Campo Grande II (3,014 ha)	
Supply Chain		
Main commodity	Timber, Beef and Soy	
Confirmed supply chain relation	Yes	
Soy	Main traders in municipality	Amaggi (70%), Multigrain (22%), Bunge (8%)
	Warehouses within 50 km radius	11 warehouses e.g. 1 owned by Cofco (84,450MT), 2 owned by Scheffer (77,960 MT), 1 owned by União Armazéns Gerais (40,840 MT)
	Supply chain details	In 2016, the same owners applied for rural insurance for soy production for another property in Rondonópolis (MT). In 2018 and 2019, Fazenda Imbu, Fazenda Sol Nascente and Fazenda Planalto, under the same ownership, supplied soy to Cofco, ADM and Bunge. Also in 2018 and 2019, Fazenda Água Limpa, under the same ownership, supplied soy to Cargill
Beef	Main traders in municipality	JBS (76%), Marfrig (22%), others (2%)
	Slaughterhouses sourcing from municipality	3 different beef processors sourced cattle from União do Sul in 2019, e.g.: 2 owned by JBS (Colider-MT and Diamantino-MT)
	Supply chain details	In 2019, the owner of this property directly sent cattle from an unknown farm in União do Sul (MT) to a slaughterhouse owned by Vale Grande, in Matupá (MT), and indirectly to a slaughterhouse owned by JBS, in Colider (MT), through two farms in Marcelândia (MT) that then directly supplied JBS
Other supply chain details	In 2020, Fazenda Floresta Ramada sold timber to 10 different sawmills	

Fazenda Floresta Ramada I, II, III IV, V and VI have valid authorizations for timber extraction. All of them except Fazenda Floresta Ramada III also received this year permits for deforestation. The deforestation was detected on Fazenda Floresta Ramada IV and V, which has a deforestation permit of 488 hectares granted in January 2020.

The family of the owners also owns 9,814 hectares in Western Bahia, where they produce coffee (1). In 2012, one of the owners, was fined for labor infractions on a coffee farm in Bahia. Infractions included using child labor and employing workers without formal contracts who were housed in poor conditions and exposed to pesticides use (2).

In 2019, the three owners were prosecuted by the Public Attorney of Mato Grosso (MPMT) for an environmental crime committed in Fazenda Floresta Ramada I, II and VI (3), and signed a Conduct Adjustment Term (TAC) nº 17/2019 (4, 5). In 2016, one of the owners was prosecuted for “causing pollution in levels that resulted in damage to human health or provoked death of animals and destruction of flora.” A conditional suspension of the process was negotiated, and the case archived in 2019 (6).

One of the owners also co-owns the property Fazenda Nova Kênia, in Novo Santo Antônio (MT), together with Eraí Maggi Scheffer (7). Eraí is known as the “King of Soy” and has links to the Grupo Scheffer/Bom Futuro and to his well-known cousin Blairo Borges Maggi (8). The listed company “Eraí Maggi Scheffer e Outros” is headquartered in Brazil and active in businesses operating farms with soybean production (9).

(1) <http://www.seagri.ba.gov.br/noticias/2009/12/03/caf%C3%A9-os-melhores-do-cerrado-baiano-revelados-na-abertura-do-ix-encontro-da>

(2) [www.mpf.mp.br/atuacao-tematica/ccr2/publicacoes/boletins/documentos/boletins-2013/boletim-46/votos-na-integra/5001.pdf](http://www.mpf.mp.br/atuacao-tematica/ccr2/publicacoes/boletins/documentos/boletins-2013/boletim-46/votos-na-integra/5001.pdf)

(3) <https://mpmt.mp.br/transparencia/includes/simpweb-det-view.php?action=consultar&protocolo=000694-097/2019>

(4) <https://www.jusbrasil.com.br/diarios/251496863/doemt-15-07-2019-pg-11>

(5) <https://www.jusbrasil.com.br/diarios/256839307/doemt-16-08-2019-pg-76>

(6) <https://www.sistemadje.tjmt.jus.br/publicacoes/10626-2019%20C5%20Comarcas%20-%20Primeira%20Entr%C3%A2ncia.pdf>

(7) <https://sigef.incra.gov.br/geo/parcela/detalhe/a9ee3b3b-670e-4a28-96cd-798765cba72f>

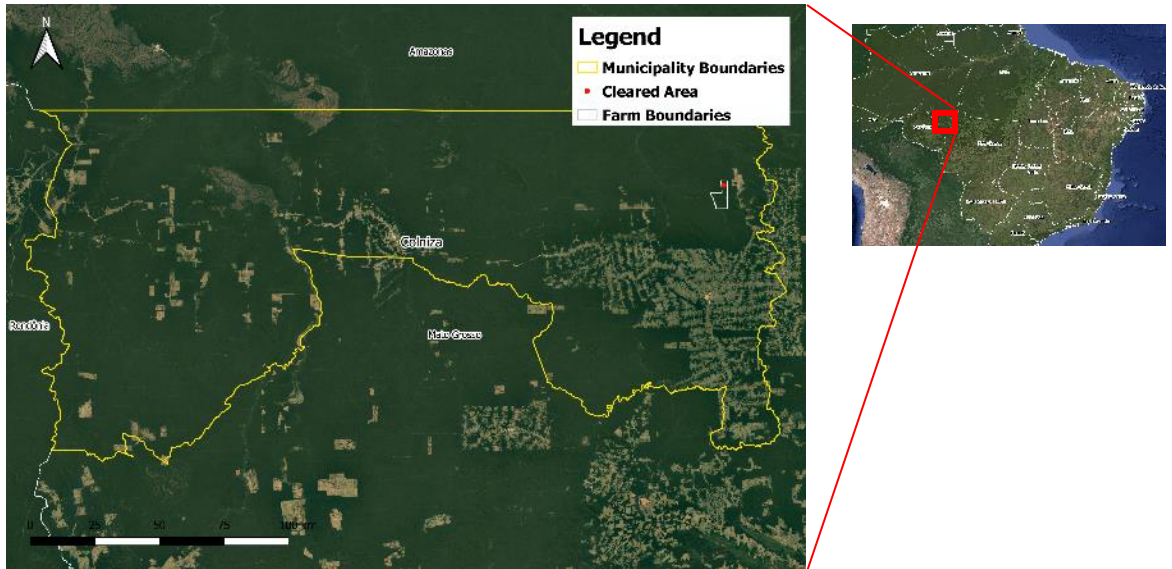
(8) <http://www.globo.com/GloboRural/0.6993.EEC1709662-2886.00.html>

(9) <https://www.bloomberg.com/profile/company/6179759Z:BZ>



# 3. Fazenda Araguaia - Gleba Escol Norte (Colniza, Mato Grosso)

## Property Location



Yellow border – boundary of Colniza (Mato Grosso) / White border – boundary of Fazenda Araguaia - Gleba Escol Norte / Red dot – location of cleared area

## Alert Imagery (before and after clearance)

4<sup>th</sup> December 2019



Source: European Union, contains modified Copernicus Sentinel data 2019, processed with EO Browser

7<sup>th</sup> April 2020



Source: European Union, contains modified Copernicus Sentinel data 2019, processed with EO Browser



MapBiomas with PlanetScope images

### 3. Fazenda Araguaia - Gleba Escol Norte (Colniza, Mato Grosso)

General Information		
Property; Registry	Fazenda Araguaia (Gleba Escol Norte)	9010911552173
Size (ha); Coordinates	4.490	-9.10799, -59.17021
Land Clearance		
Period of clearing	04 Dec 2019 to 07 Apr 2020	
Size (ha); Coordinates	852	-9.06324, -59.16150
Inside Forest Code protected areas	No	-
Type of vegetation	Ombrophilous Open Forest	
Legal Status		
Embargoes	Yes	1 embargoed area in Fazenda Araguaia for deforestation of 28 ha without proper authorization in 2008
Environmental fines	Yes	1 environmental fine for deforestation without legal authorization and 1 environmental fine for illegal fires in Fazenda Araguaia in 2008
Natural Reserves	Yes	Parque Estadual Igarapés do Juruena
Indigenous Lands	No	-
Priority for biodiversity conservation	No	
Ownership		
Company group	Not identified	
Other linked properties	Not identified	
Supply Chain		
Main commodity	Beef and Timber	
Confirmed supply chain relation	Yes	
Soy	Main traders in municipality	-
	Warehouses within 50 km radius	-
	Supply chain details	-
Beef	Main traders in municipality	JBS (34%), Marfrig (32%), Minerva (16%), others (18%)
	Slaughterhouses sourcing from municipality	14 different beef processors sourced cattle from Colniza in 2019, e.g.: 2 owned by JBS (Juara-MT and Juina - MT)
	Supply chain details	The property has a registration for cattle production
Other supply chain details	The property has also a registration for timber production. In 2019 Fazenda Araguaia sold timber to 3 different sawmills including MGM Agroflorestal, which exported timber to China, Italy, Belgium and France. One of the importers in France is a supplier of retailers owned by Saitn Gobain Group	

The property Fazenda Araguaia is mentioned in a CAR fraud case from April 2019: "for fraud in information posted in the CAR regarding 'Fazenda Araguaia', located in the municipality of Colniza" (1). The investigation was closed due to lack of criminal evidence (2). Nine years before, in 2010, part of Fazenda Araguaia was declared as legal reserve as part of a Conduct Adjustment Term (3).

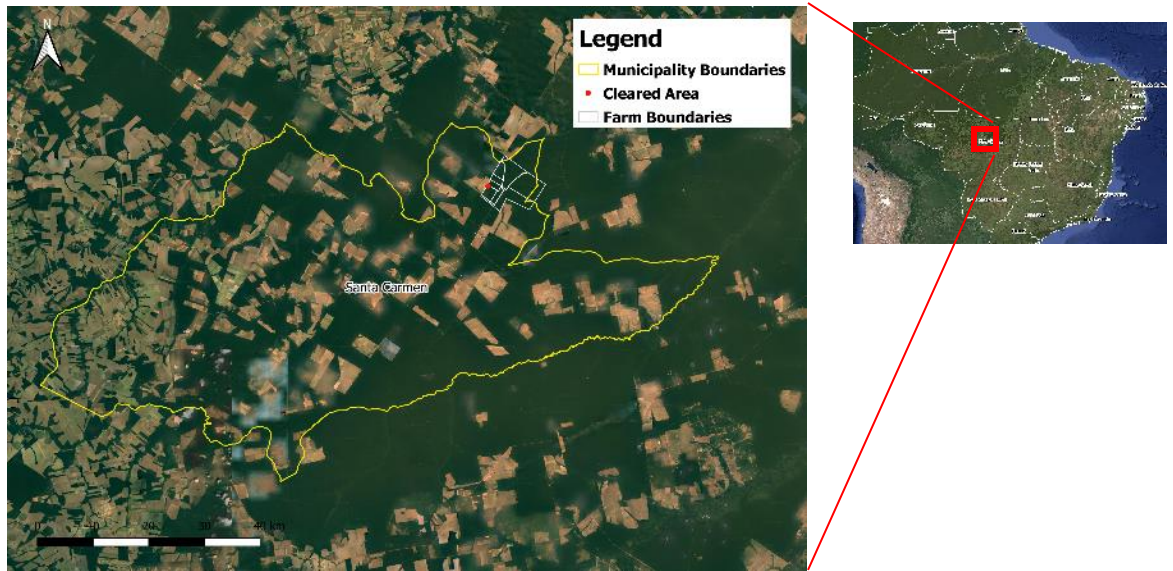
Fazenda Araguaia has a valid permit for deforestation of 835 hectares, issued in July 2019, as well as authorization for selling timber from the deforested area.

(1) <https://www.olharjuridico.com.br/noticias/exibir.asp?id=39939&noticia=promotores-instauram-inquerito-contra-17-investigados-por-fraudes-em-car-veja-lista>

(2) <https://www.mpmt.mp.br/transparencia/includes/simpweb-det-view.php?action=consultar&protocolo=000481-097/2019>

(3) <https://www.jusbrasil.com.br/diarios/28226759/pg-46-diario-oficial-do-estado-do-mato-grosso-doemt-de-28-01-2011>

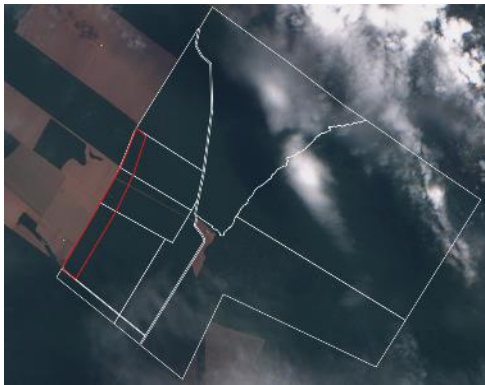
## Property Location



Yellow border – boundary of Santa Carmem (Mato Grosso) / White border – boundary of Fazenda Sumatra - Mat 1424, I, II and III / Red dot – location of cleared area

## Alert Imagery (before and after clearance)

3<sup>rd</sup> November 2019



Source: European Union, contains modified Copernicus Sentinel data 2019, processed with EO Browser

6th April 2020



Source: European Union, contains modified Copernicus Sentinel data 2019, processed with EO Browser



MapBiomias with PlanetScope images

## 4. Fazenda Sumatra - Mat 1424, I, II and III (Santa Carmem, Mato Grosso)

General Information		
Property; Registry	Fazenda Sumatra (Mat 1424, I, II and III)	9011641797795
Size (ha); Coordinates	6,450	-11.75262, -54.63184
Land Clearance		
Period of clearing	03 Nov 2019 to 06 Apr 2020	
Size (ha); Coordinates	194	-11.75506, -54.66735
Inside Forest Code protected areas	No	-
Type of vegetation	Semidecidual Seasonal Forest	
Legal Status		
Embargoes	No	-
Environmental fines	No	-
Natural Reserves	No	-
Indigenous Lands	No	-
Priority for biodiversity conservation	Extremely high	
Ownership		
Company group	Madeirato Madeira and Imatol Indústria de Madeiras Tomelin, both registered in Sinpo (MT)	
Other linked properties	2 other properties, totaling at least 1,460 ha. In Itaúba (MT): Fazenda Macuco (1,460 ha). In Terra Nova do Norte (MT): Estância Rio das Pedras (unknown area)	
Supply Chain		
Main commodity	Timber, Beef and Soy	
Confirmed supply chain relation	Yes	
Soy	Main traders in municipality	Glencore (36%), Cofco (28%), Engelhart (26%), others (10%)
	Warehouses within 50 km radius	26 warehouses e.g. 1 owned by Cargill (720,000 MT), 2 owned by Sival (96,728 MT), 2 owned by Cofco (65,338 MT)
	Supply chain details	The property is registered for soy production
Beef	Main traders in municipality	JBS (56%), Vale Grande (41%), others (3%)
	Slaughterhouses sourcing from municipality	3 different beef processors sourced cattle from Santa Carmem in 2019, e.g.: 1 owned by JBS (Diamantino - MT), 1 owned by Vale Grande (Matupa - MT)
	Supply chain details	The property is also registered for cattle production. Since 2018, a linked farm - Fazenda Macuco, in Itaúba (MT) - supplied cattle to 29 farms and 1 slaughterhouse owned by Bombonato, in Sinop (MT), with 1 fine. The linked property, Estância Rio das Pedras in Terra Nova do Norte (MT), also supplied cattle to Bombonato in 2019
Other supply chain details	The property is also registered for rice and corn production and logging operations. In 2019, Fazenda Sumatra sold timber to 7 different sawmills	

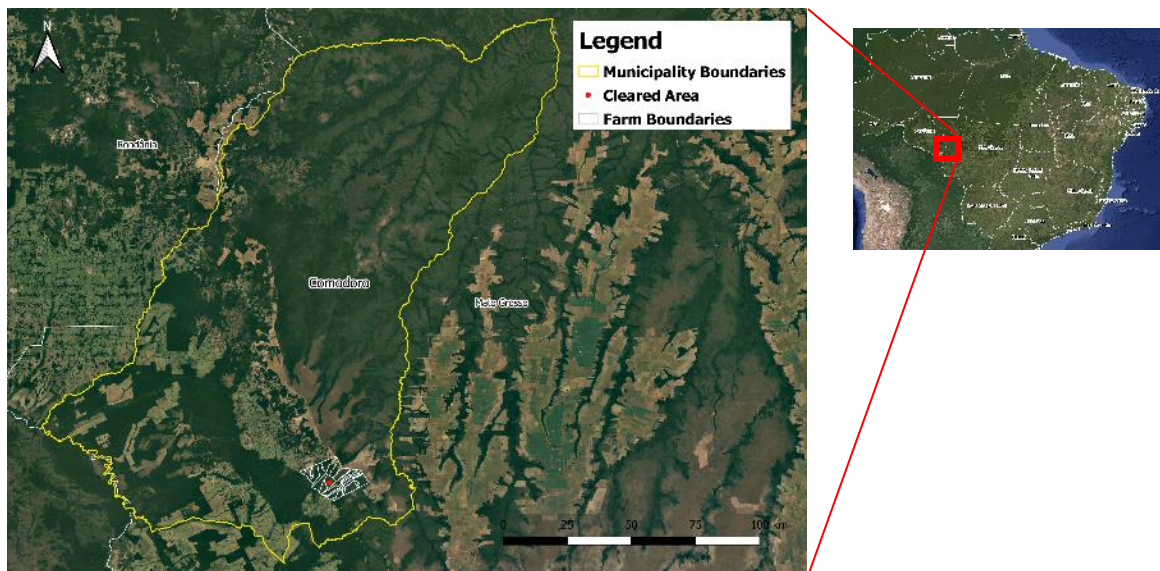
Fazenda Sumatra (Mat. 1424 and III) have active permits for deforestation and timber trade. One of the owners was investigated for CAR frauds in Fazenda Sumatra (1), but the investigation was closed for lack of criminal evidence (2). The other owner of this property currently breeds cattle at Fazenda Macuco and Fazenda Sumatra (3).

Founded in 1985 in Sinop (MT), with properties in Santa Carmem (MT), the company Madeirato Madeiras was closed in 2007 as a result of “Operation Curupira” (4). Initiated in 2005, the operation dismantled a criminal organization of illegal loggers that extracted 1.9 million cubic meters of timber from the Amazon forest, and severely impacted the logging sector in that region (5).

The owners of Fazenda Sumatra are also involved in a land dispute in Sinop, MT (6). One of the owners is one of the 12 farmers involved in the judicial dispute over Gleba Atlântica, an area of 9,700 hectares. After being closed in 2016, the process was reopened in 2018 and involves reparation payments totalling BRL 90 million related to the construction of the reservoir of Hydropower Plant (UHE) Sinop (7, 8).

- (1) <https://transparencia.mpmt.mp.br/includes/simpweb-det-view.php?action=consultar&protocolo=001021-097/2019>
- (2) <https://transparencia.mpmt.mp.br/includes/simpweb-det-view.php?action=consultar&protocolo=001021-097/2019>
- (3) <https://www.paginarural.com.br/noticia/174597/anunciados-cdeoes-do-ranking-nelore-de-mato-grosso-na-27ordf-expota>
- (4) <https://www.escavador.com/processos/104314333/processo-1006776-1020198110015-do-diario-de-justica-do-estado-do-mato-grosso?ano=2019>
- (5) <https://www.mma.gov.br/informma/item/2590-governo-desmantela-quadrilha-que-atuava-ha-14-anos-no-mato-grosso>
- (6) <http://gcnoticias.com.br/geral/tribunal-reabre-processo-para-sequestro-de-12-fazendas-na-gleba-atlantica/62014240>
- (7) <http://gcnoticias.com.br/geral/tribunal-reabre-processo-para-sequestro-de-12-fazendas-na-gleba-atlantica/62014240>
- (8) <http://gcnoticias.com.br/geral/maisder90milh-iesemindeniza-c-iesdausinaest-econgelados/69178096>

## Property Location



Yellow border – boundary of Comodoro (Mato Grosso) / White border – boundary of Fazenda Oeste / Red dot – location of cleared area

## Alert Imagery (before and after clearance)

10<sup>th</sup> January 2020



Source: European Union, contains modified Copernicus Sentinel data 2019, processed with EO Browser

24<sup>th</sup> April 2020



Source: European Union, contains modified Copernicus Sentinel data 2019, processed with EO Browser



MapBiomias with PlanetScope images

## 5. Fazenda Oeste (Comodoro, Mato Grosso)

General Information		
Property; Registry	Fazenda Oeste	9021280006980
Size (ha); Coordinates	25,600	-13.86871, -59.66599
Land Clearance		
Period of clearing	10 Jan to 24 Apr 2020	
Size (ha); Coordinates	1,146	-13.88674, -59.67711
Inside Forest Code protected areas	No	-
Type of vegetation	Wooded Savanna	
Legal Status		
Embargoes	Yes	1 embargo issued by the Mato Grosso environmental agency
Environmental fines	Yes	-
Natural Reserves	No	-
Indigenous Lands	Yes	Bordering two Indigenous Territories: Nambikwara and Vale do Guaporé
Priority for biodiversity conservation	Very high	
Ownership		
Company group	Fazenda da Chapada, Chapada Grãos, Mazan Madeireira Zamban, and Indústria de Madeiras Zamban, all registered in Vacaria (RS)	
Other linked properties	12 other properties, totaling at least 12,099 ha. In Comodoro (MT): Fazenda Mazan (125 ha); Fazenda Vacaria (940 ha); Fazenda Vacaria III (2,800 ha); Fazenda Vacaria IV (2,840 ha); Fazenda Vacaria V (2,230 ha). In Campo Grande (MT): Fazenda Santana (unknown area); Fazenda São Geraldo (unknown area). In Passo Fundo (RS): Fazenda Nossa Senhora Aparecida (571 ha). In Bom Jesus (RS): Invernada da Serra Remanescente (797 ha). In Campestre da Serra and Vacaria (RS): Fazenda do Cedro (571 ha); Fazenda São Geraldo (811 ha). In Muitos Capões (RS): Fazenda Morro Grande (614 ha)	
Supply Chain		
Main commodity	Timber, Beef and Soy	
Confirmed supply chain relation	Yes	
Soy	Main traders in municipality	Cargill (37%), ADM (14%), others (8%), Domestic Consumption (41%)
	Warehouses within 50 km radius	17 warehouses e.g. 1 owned by Bunge (47,829 MT), 1 owned by Valdemar Mansueto Zanella (35,560 MT), 1 owned by Amaggi (21,780 MT)
	Supply chain details	-
Beef	Main traders in municipality	JBS (65%), Minerva (18%), Marfrig (9%), others (18%)
	Slaughterhouses sourcing from municipality	10 different beef processors sourced cattle from Comodoro in 2019, e.g.: 2 owned by JBS (Diamantino - MT and Pontes e Lacerda - MT), 1 owned by Marfrig (Pontes e Lacerda - MT)
	Supply chain details	In 2019, a linked property, Fazenda Vacaria III, also in Comodoro directly supplied a slaughterhouse owned by JBS in Pontes e Lacerda (MT)
Other supply chain details	Linked properties are active in the timber sector	

## 5. Fazenda Oeste (Comodoro, Mato Grosso)

Fazenda Oeste received 2 environmental fines in October 2019 issued by the Environmental Agency of Mato Grosso. In 2020 Fazenda Oeste received authorizations for deforestation and timber trade on behalf of the owners and the company Fazenda da Chapada. The company Mazan Madeireira Zamban maintains its operations in Fazenda Oeste according to licensing registered at the Environmental Agency of Mato Grosso.

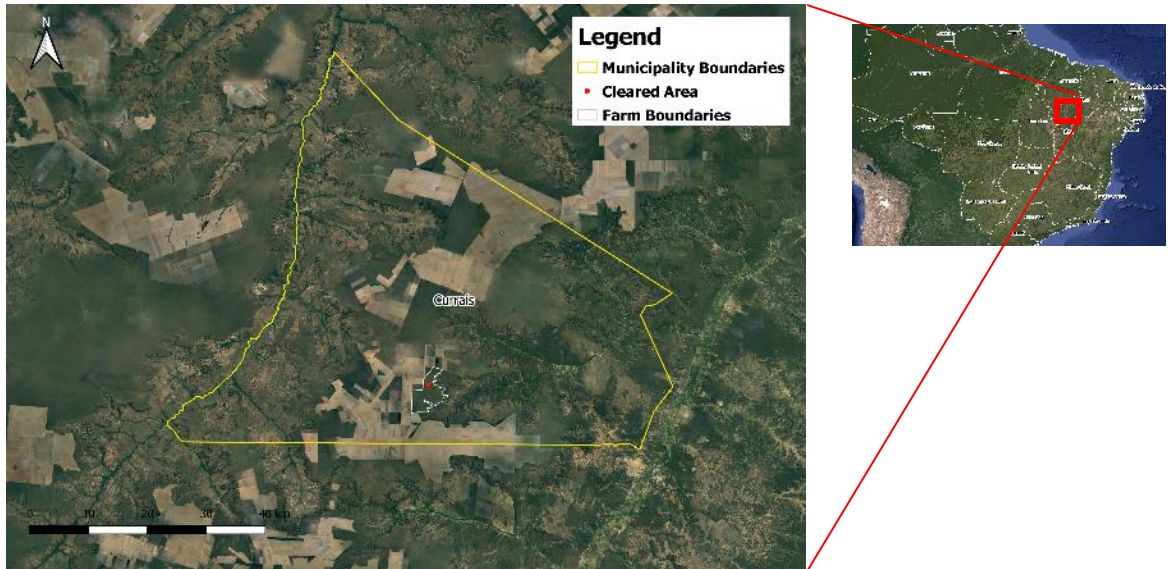
The owners of Fazenda Oeste are also linked to Gleba Zamban, an area disputed over for 9 years with landless workers, and converted into an agrarian reform settlement “Assentamento Zamban” in 2013 (1, 2).

(1) <https://www.folhadosulonline.com.br/noticias/detalhe/2011/fazendeiro-e-aplaudido-por-sem-terra-durante-audiencia>

(2) <http://www.folhadearaputanga.com.br/artigo/759>



## Property Location



Yellow border – boundary of Currais (Piauí)/ White border – boundary of Fazenda Nossa Senhora Aparecida / Red dot – location of cleared area

## Alert Imagery (before and after clearance)

7<sup>th</sup> October 2019



Source: European Union, contains modified Copernicus Sentinel data 2019, processed with EO Browser

24<sup>th</sup> April 2020



Source: European Union, contains modified Copernicus Sentinel data 2019, processed with EO Browser



MapBiomass with PlanetScope images

## 6. Fazenda Nossa Senhora Aparecida (Currais, Piauí)

General Information		
Property; Registry	Fazenda Nossa Senhora Aparecida	9510217686181
Size (ha); Coordinates	2,481	-8.95487, -44.68128
Land Clearance		
Period of clearing	07 Oct 2019 to 24 Apr 2020	
Size (ha); Coordinates	648	-8.94138, -44.68196
Inside Forest Code protected areas	Yes	887 ha inside declared Legal Reserve and APP
Type of vegetation	Wooded Savanna	
Legal Status		
Embargoes	Yes (other links)	2 embargoes for native vegetation degradation: 25 ha in Fazenda Varedão in Paraná (TO) in 2013 and 70 ha inside the conservation area "Estação Ecológica Terra do Meio" in Altamira (PA) in 2017
Environmental fines	Yes	2 environmental fines: 1 for violating an embargo and preventing natural regeneration of native vegetation in Altamir, in 2017; 1 for illegal deforestation in Fazenda Varedão, in 2013
Natural Reserves	No	-
Indigenous Lands	No	-
Priority for biodiversity conservation	No	
Ownership		
Company group	Agropecuária Nossa Senhora Aparecida and Agrovale Agropecuária Vale do Boi, both registered in Brasília (DF)	
Other linked properties	1 other property in Currais (PI): Fazenda Santíssima Trindade I (2,480 ha)	
Supply Chain		
Main commodity	Soy	
Confirmed supply chain relation	Yes	
Soy	Main traders in municipality	Oleoplan (6%), Domestic Consumption (94%)
	Warehouses within 50 km radius	21 warehouses e.g. 1 owned by José Antônio Marafon (959,000 MT), 2 owned by Bunge (62,358 MT), 1 owned by Agrex (25,986 MT)
	Supply chain details	-
Beef	Main traders in municipality	-
	Slaughterhouses sourcing from municipality	-
	Supply chain details	-
Other supply chain details	-	

Related companies are active in trading of raw agricultural products, specifically beans, rice, corn, and wheat (1). Ailton Aguiar Barbosa was also accused by IBAMA of illegal deforestation in two embargoed areas: one in Fazenda Veredão in Paranã (TO) in 2013 (fine of BRL 25,000, still unpaid); and another one inside the “Estação Ecológica Terra do Meio”, a federal natural reserve in Altamira (PA) in 2016 (2). Ailton Aguiar Barbosa is also involved in at least two land conflict legal cases in Piauí (3).

In 2015, the Public Prosecutor Office in Piauí started an investigation about environmental damages resulting from deforestation in Fazenda Nossa Senhora Aparecida (4, 5). The deforestation was allegedly affecting a Legal Reserve area belonging to the Community Development Association of Rural Micro Producers of Alto Alegre (6, 7). The case went to the Justice Court of Piau state, but in 2019 the trial was suspended due to the prescription of the crime (8). Another lawsuit for environmental crimes in the same region was filed in 2018 and it is still pending (9).

(1) <https://cnpj.biz/20359490000124>

(2) <https://servicos.IBAMA.gov.br/ctf/publico/areasembargadas/ConsultaPublicaAreasEmbargadas.php>

(3) [https://www.jusbrasil.com.br/diarios/85093589/tce-pi-15-10-2007-pg-13?ref=previous\\_button](https://www.jusbrasil.com.br/diarios/85093589/tce-pi-15-10-2007-pg-13?ref=previous_button)

(4) [www.mppi.mp.br/consulta-publica/tac/dw?id=1715308&pmov=25871437](http://www.mppi.mp.br/consulta-publica/tac/dw?id=1715308&pmov=25871437)

(5) <https://www.gpi.com.br/noticias/ministerio-publico-investiga-desmatamento-ilegal-no-municipio-de-currais-367289.html>

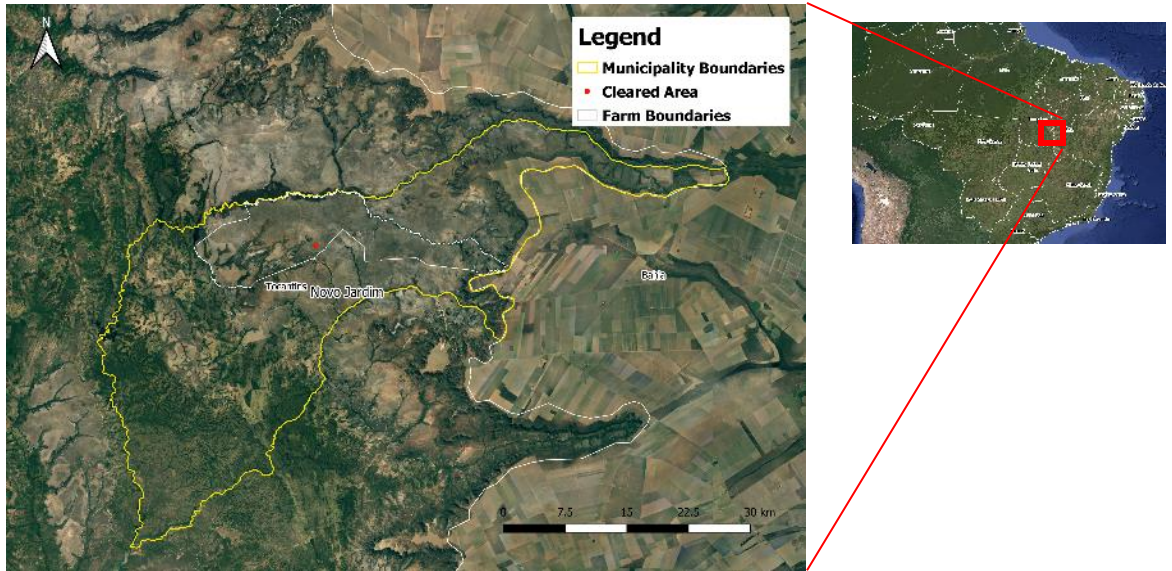
(6) <https://www.mppi.mp.br/consulta-publica/tac/dw?id=1715308&pmov=25871437>

(7) <https://www.gpi.com.br/noticias/ministerio-publico-investiga-desmatamento-ilegal-no-municipio-de-currais-367289.html>

(8) Lawsuit 0000099-37.2016.8.18.0129, checked at <http://www.tjpi.jus.br/>

(9) Lawsuit 0000041-63.2018.8.18.0129, checked at <http://www.tjpi.jus.br/>

## Property Location



Yellow border – boundary of Novo Jardim (Tocantins) / White border – boundary of Fazenda Morro Branco / Red dot – location of cleared area

## Alert Imagery (before and after clearance)

6<sup>th</sup> November 2019



29<sup>th</sup> April 2020



## 7. Fazenda Morro Branco (Novo Jardim, Tocantins)

General Information		
Property; Registry	Fazenda Morro Branco	9251100027980
Size (ha); Coordinates	20,596	-11.67805, -46.53017
Land Clearance		
Period of clearing	06 Nov 2019 to 29 Apr 2020	
Size (ha); Coordinates	518	-11.71055, -46.54410
Inside Forest Code protected areas	No	--
Type of vegetation	Savanna Park	
Legal Status		
Embargoes	No	-
Environmental fines	No	-
Natural Reserves	Yes	Área de Proteção Ambiental Bacia do Rio de Janeiro
Indigenous Lands	No	-
Priority for biodiversity conservation	Very high	
Ownership		
Company group	Agropecuária Morro Branco registered in Novo Jardim (TO) and in São Paulo (SP) and MB Bovinos Agropecuária registered in Novo Jardim (TO)	
Other linked properties	6 other properties, totaling 4,840 ha. In Novo Jardim (TO): Fazenda Descoberto (410 ha). In Dianópolis (TO): Fazenda Vale Verde (670 ha); Fazenda São Bento (710 ha); Fazenda Açúde (480 ha); Fazenda Santa Fé (640 ha). In Almas (TO): Fazenda Jataí (1,930 ha)	
Supply Chain		
Main commodity	Beef and Soy	
Confirmed supply chain relation	Yes	
Soy	Main traders in municipality	ADM (100%)
	Warehouses within 50 km radius	48 warehouses e.g. 1 owned by Marcelino Walker (680,000 MT), 1 owned by SJ Brazil (530,000 MT), 2 owned by Bunge (62,154 MT)
	Supply chain details	-
Beef	Main traders in municipality	-
	Slaughterhouses sourcing from municipality	3 different beef processors sourced cattle from Novo Jardim in 2018 and 2019, e.g.: 1 owned by Boi Branco (Dianópolis - TO)
	Supply chain details	From 2018 to 2020 Fazenda Morro Branco transferred animals to at least 28 other farms through MB Bovinos Agropecuária. These farms included direct suppliers to Boi Brasil, Frilem, LKJ, and Cooperfrigu
Other supply chain details	-	

Fazenda Morro Branco participates in a program developed by Embrapa, the Brazilian state-owned agriculture development agency, with the goal of raising productivity through land use projects integrating agriculture and cattle raising (1, 2).

Agropecuária Morro Branco only raises cattle until the rearing stage, selling them for slaughter to others (3). The animals are sold through the company MB Bovinos Agropecuária, owned by Agropecuária Morro Branco. The property Morro Branco was part of a Chain Reaction Research report focused on deforestation in Tocantins, published in April 2019, with 1,072 hectares deforested on the property (4).

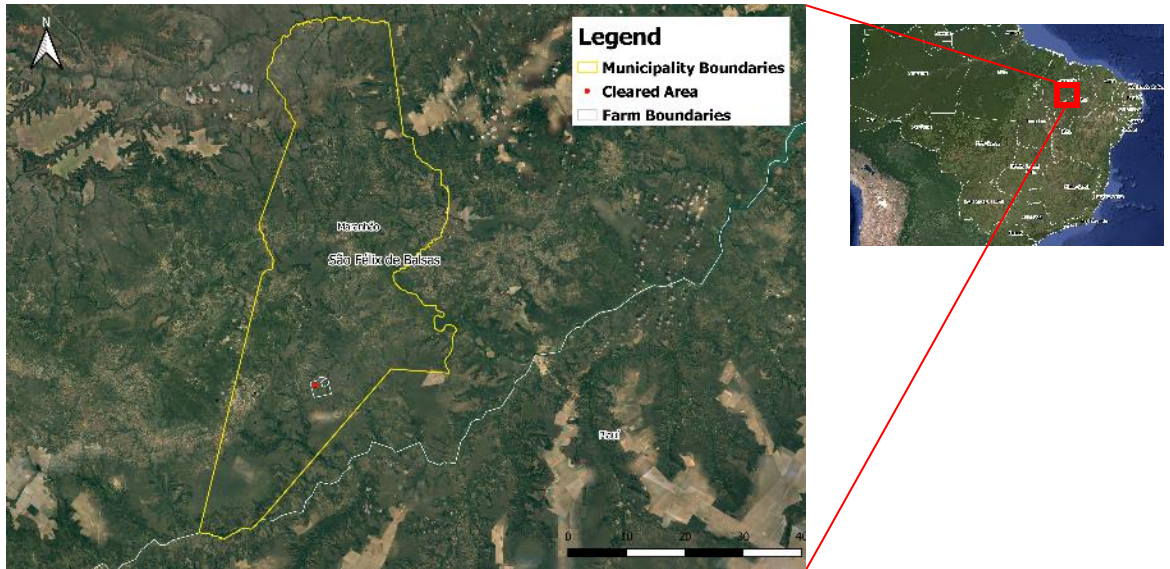
(1) <https://bico24horas.com.br/noticia/embrapa-marca-presenca-em-eventos-no-tocantins-e-no-para-que-tem-em-comum-a-discussao-sobre-sustentabilidade-rural/13473>

(2) <https://www.jusbrasil.com.br/diarios/205168974/dou-secao-3-23-08-2018-pg-6>

(3) [https://www.youtube.com/watch?time\\_continue=30&v=4wrZX1E4kbc&feature=emb\\_logo](https://www.youtube.com/watch?time_continue=30&v=4wrZX1E4kbc&feature=emb_logo)

(4) <https://chainreactionresearch.com/report/brazilian-state-of-tocantins-a-hotspot-for-cerrado-deforestation/>

## Property Location



Yellow border – boundary of São Félix das Balsas (Maranhão) / White border – boundary of Fazenda Rã / Red dot – location of cleared area

## Alert Imagery (before and after clearance)

1<sup>st</sup> November 2019

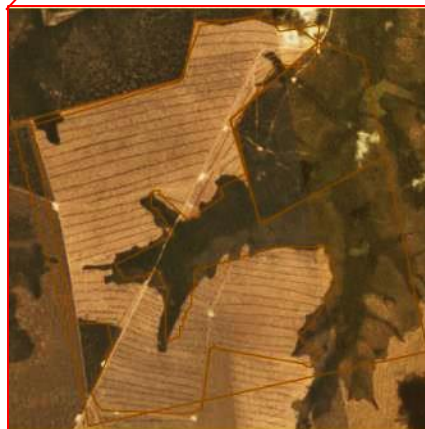


Source: European Union, contains modified Copernicus Sentinel data 2019, processed with EO Browser

30<sup>th</sup> March 2020



Source: European Union, contains modified Copernicus Sentinel data 2019, processed with EO Browser

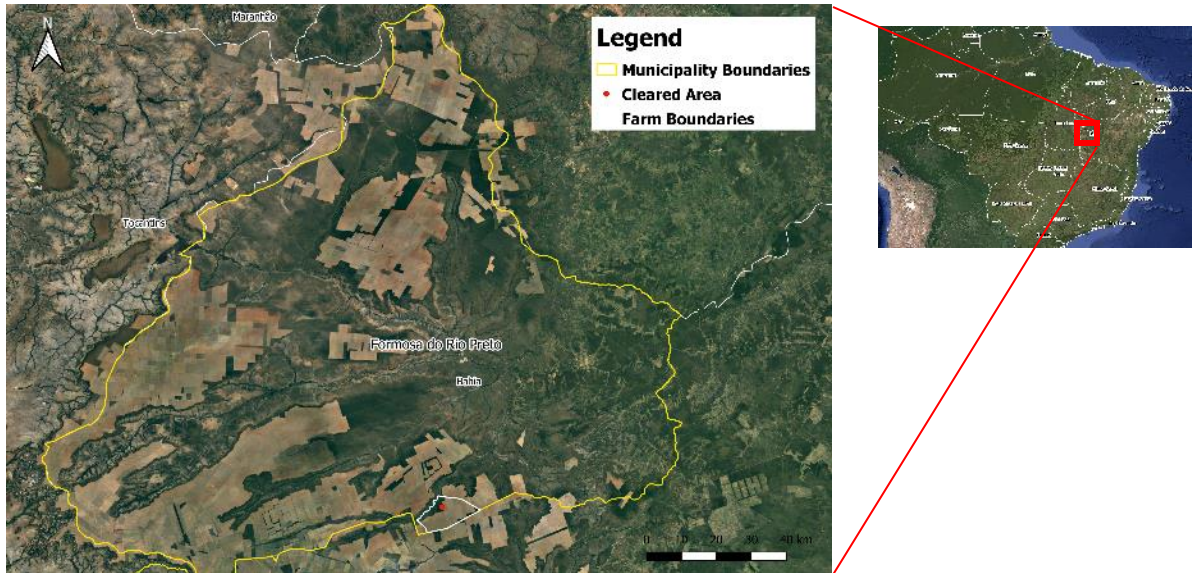


MapBiomias with PlanetScope images

## 8. Fazenda Rã (São Félix das Balsas, Maranhão)

General Information		
Property; Registry	Fazenda Rã	9501907499580
Size (ha); Coordinates	867	-7.27858, -44.89635
Land Clearance		
Period of clearing	01 Nov 2019 to 30 Mar 2020	
Size (ha); Coordinates	450	-7.27337, -44.90523
Inside Forest Code protected areas	Yes	77 ha inside declared Legal Reserve and APP
Type of vegetation	Forested Savanna	
Legal Status		
Embargoes	No	-
Environmental fines	No	-
Natural Reserves	No	-
Indigenous Lands	No	-
Priority for biodiversity conservation	No	
Ownership		
Company group	Not identified	
Other linked properties	Not identified	
Supply Chain		
Main commodity	Soy	
Confirmed supply chain relation	Yes	
Soy	Main traders in municipality	Domestic Consumption (100%)
	Warehouses within 50 km radius	7 warehouses e.g. 2 owned by Canel-Central Agropecuária Nova Era (29,017 MT)
	Supply chain details	In 2019, the farm requested an environmental license for a soy plantation (process number 123760/2019) from the Environmental Agency of Mato Grosso
Beef	Main traders in municipality	-
	Slaughterhouses sourcing from municipality	-
	Supply chain details	-
Other supply chain details	-	

## Property Location



Yellow border – boundary of Formosa do Rio Preto (Bahia) / White border – boundary of Fazenda Triunfo / Red dot – location of cleared area

## Alert Imagery (before and after clearance)

21<sup>st</sup> December 2019

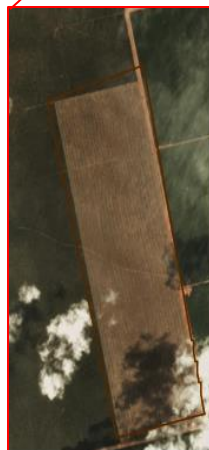


Source: European Union, contains modified Copernicus Sentinel data 2019, processed with EO Browser

4<sup>th</sup> April 2020



Source: European Union, contains modified Copernicus Sentinel data 2019, processed with EO Browser



MapBiomias with PlanetScope images



## 9. Fazenda Triunfo (Formosa do Rio Preto, Bahia)

General Information		
Property; Registry	Fazenda Triunfo	3010860089315
Size (ha); Coordinates	10,050	-11.44223, -45.56049
Land Clearance		
Period of clearing	21 Dec 2019 to 04 Apr 2020	
Size (ha); Coordinates	191	-11.42101, -45.57023
Inside Forest Code protected areas	No	-
Type of vegetation	Wooded Savanna	
Legal Status		
Embargoes	No	-
Environmental fines	No	-
Natural Reserves	Yes	Área de Proteção Ambiental do Rio Preto
Indigenous Lands	No	-
Priority for biodiversity conservation	No	
Ownership		
Company group	Agropecuária A. Manjabosco, Agropecuária Mariana Manjabosco and Alvorada Sistemas Agrícolas, registered in Santa Rosa (RS)	
Other linked properties	4 other properties, totaling 10,326 ha. In Riachão das Neves (BA): Fazenda Santa Maria (3,335 ha); Fazenda Santa Maria II (1,830 ha); Fazenda Santa Marta (1,246 ha). In Santa Rita de Cássia (BA): Fazenda Novale (3,915 ha)	
Supply Chain		
Main commodity	Timber, Beef and Soy	
Confirmed supply chain relation	Yes	
Soy	Main traders in municipality	Bunge (27%), Horita (19%), Amaggi (11%), Cargill (6%), Domestic Consumption (38%)
	Warehouses within 50 km radius	43 warehouses e.g. 3 owned by Belap Agropecuária (1,960,140 MT), 2 owned by Sérgio Setsuo Sato (830,000 MT), 1 owned by Antônio Crespan (771,000 MT)
	Supply chain details	-
Beef	Main traders in municipality	JBS (100%)
	Slaughterhouses sourcing from municipality	7 different beef processors sourced from Formosa do Rio Preto in 2017 e.g. 1 owned by Frigorífico Regional De Barreiras LTDA (Barreiras, BA), 1 owned by Matadouro Municipal de Formosa do Rio Preto (Formosa do Rio Preto, BA)
	Supply chain details	Direct supplier to 4 regional slaughterhouses in Bahia state and indirect supplier to a slaughterhouse owned by JBS in Itapetininga (BA) through other 4 farms between 2018 and 2019
Other supply chain details	In 2014, Fazenda Triunfo supplied corn to Asa indústria e Comércio, in Pernambuco	

Fazenda Novale (Santa Rita de Cássia - BA), a property under the same ownership, was part of the Rapid Response report 9 published in December 2019 (1). Fazenda Triunfo (Formosa do Rio Preto - BA) and Fazenda Novale (Santa Rita de Cássia - BA) are part of the owner's family business integrating cattle, soy, and timber production in Western Bahia (2). In 2015, the family's cattle business included 2,500 animals with an expectation to double it in the following years (3).

A family member is partner of the Cooperativa dos Produtores Rurais da Bahia (Cooperfarms), present in Goiás and Tocantins state (4). The family also owns a company that officially represents the John Deere brand in Rio Grande do Sul (5). In November 2019, the companies that own the property, Agropecuária A. Manjabosco and Agropecuária Mariana Manjabosco, and other landowners were part of a Federal Police's operation, Avati, which resulted in a prosecution for tax fraud (totaling BRL 6.5 million), money laundering and criminal association (6).

(1) [http://www.mightyearth.org/wp-content/uploads/Rapid-Response\\_Soy-and-Cattle\\_Report\\_9\\_January-2020.pdf#new\\_tab](http://www.mightyearth.org/wp-content/uploads/Rapid-Response_Soy-and-Cattle_Report_9_January-2020.pdf#new_tab)

(2) <https://revistagloborural.globo.com/Integracao/noticia/2016/04/integracao-da-opcao-de-renda-e-amenizariscos.html>

(3) <https://www.dinheirorural.com.br/secao/agronegocios/fantastica-fabrica-de-touros>

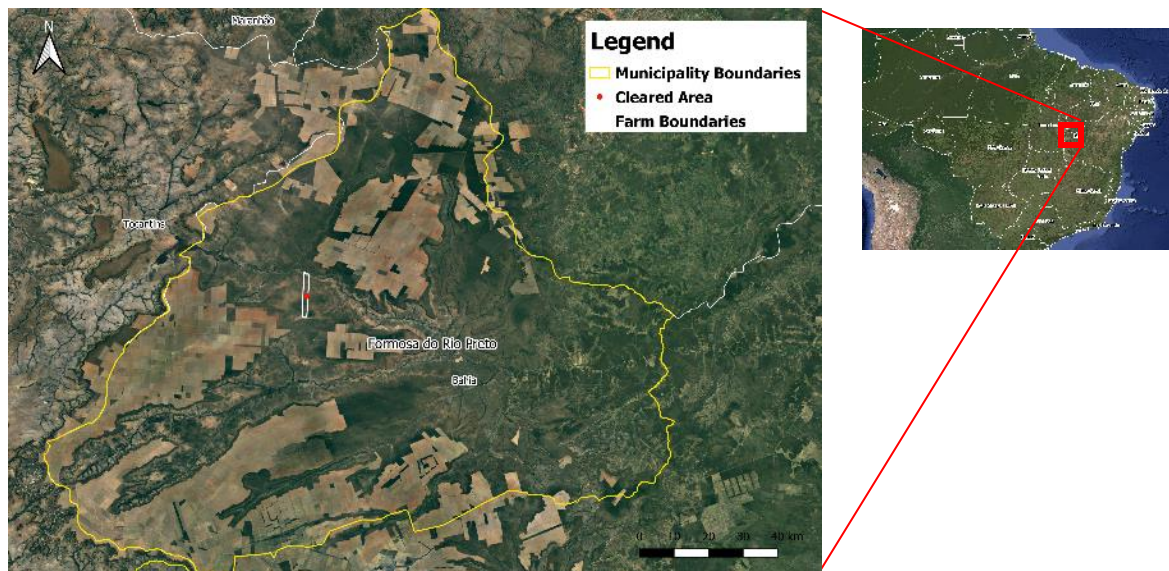
(4) <https://www.consultasocio.com/q/sa/eduardo-antonio-manjabosco>

(5) [http://www.alvorada-rs.com.br/content/about\\_us](http://www.alvorada-rs.com.br/content/about_us)

(6) <https://www.correio24horas.com.br/noticia/nid/empresas-ligadas-a-o-agronegocio-sao-suspeitas-de-sonegar-r-20-milhoes-na-bahia/>

# 10. Fazenda Santo Cristo II (Formosa do Rio Preto, Bahia)

## Property Location



Yellow border – boundary of Formosa do Rio Preto (Bahia) / White border – boundary of Fazenda Santo Cristo II / Red dot – location of cleared area

## Alert Imagery (before and after clearance)

14<sup>th</sup> February 2020

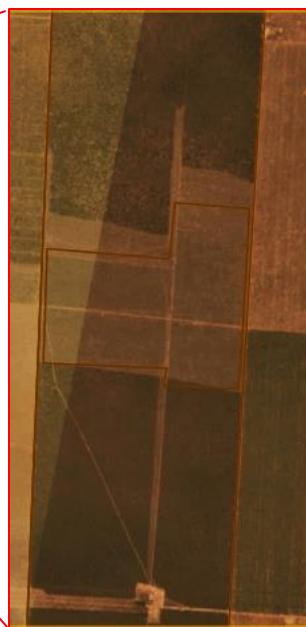


Source: European Union, contains modified Copernicus Sentinel data 2019, processed with EO Browser

4<sup>th</sup> April 2020



Source: European Union, contains modified Copernicus Sentinel data 2019, processed with EO Browser



MapBiomias with PlanetScope images

# 10. Fazenda Santo Cristo II

(Formosa do Rio Preto, Bahia)

General Information		
Property; Registry	Fazenda Santo Cristo II	9501658914288
Size (ha); Coordinates	6,790	-10.87050, -45.92258
Land Clearance		
Period of clearing	14 Feb to 04 Apr 2020	
Size (ha); Coordinates	170	-10.86908, -45.91791
Inside Forest Code protected areas	No	-
Type of vegetation	Wooded Savanna	
Legal Status		
Embargoes	Yes (other links)	2 embargoes in a linked farm (Fazenda Santa Rita de Cássia, Barreiras - BA) for deforestation without proper authorization in 2008 and 2009
Environmental fines	No	-
Natural Reserves	Yes	Área de Proteção Ambiental do Rio Preto
Indigenous Lands	No	-
Priority for biodiversity conservation	Extremely high	
Ownership		
Company group	JPR Agrícola registered in Luís Eduardo Magalhães (BA)	
Other linked properties	9 other properties, totaling 23,410 ha. In Formosa do Rio Preto: Fazenda Santo Cristo (4,983 ha). In Barreiras: Fazenda Santa Rosa I (1,200 ha); Fazenda Santa Rosa II (810 ha); Fazenda Santa Rosa III (332 ha); Fazenda São João (5,631 ha); Fazenda São João III, IV, V e VI (1,546 ha). In Luís Eduardo Magalhães: Fazenda San Michel (625 ha). In Mansidão: Fazenda São João (6,425 ha)	
Supply Chain		
Main commodity	Beef and Soy	
Confirmed supply chain relation	Yes	
Soy	Main traders in municipality	Bunge (27%), Horita (19%), Amaggi (11%), Cargill (6%), Domestic Consumption (38%)
	Warehouses within 50 km radius	29 warehouses e.g. 1 owned by Synagro Comercial Agrícola (800,000 MT), 4 owned by Bunge (123,800 MT), 1 owned by Amaggi (50,000 MT)
	Supply chain details	In 2014, the same owner applied for rural insurance for soy production in another property in Barreiras (BA)
Beef	Main traders in municipality	JBS (100%)
	Slaughterhouses sourcing from municipality	7 different beef processors sourced from Formosa do Rio Preto in 2017 e.g. 1 owned by Frigorífico Regional De Barreiras LTDA (Barreiras, BA), 1 owned by Matadouro Municipal de Formosa do Rio Preto (Formosa do Rio Preto, BA)
	Supply chain details	A linked farm, Fazenda São João (Barreiras - BA), had 2 embargoes and 2 environmental fines in 2008
Other supply chain details	-	

The Rambo Family, owner of Fazenda Santo Cristo II, is originally from Santo Cristo (RS), though the farm in question is in Formosa do Rio Preto (1). One of the family members belongs to the fiscal council of Bahia's Farmers and Irrigation Association (AIBA) (2) and is listed as a public supplier of "cereals" to the Brazilian Army (unit in Barreiras, Bahia) (3). A linked property, in Barreiras (BA), had rural insurance linked to soy production in 2014 (4). There is also a possible connection to JPR Agrícola (soy), owned by Michel Rodrigo Rambo and based in Luis Eduardo Magalhães (BA). Rambo's family members own a cargo transport company, the Rodo Rambo, based also in Luis Eduardo Magalhães (BA) (5).

In 2017, Ildo João Rambo was prosecuted for environmental fraud in the bordering farm Fazenda Santo Cristo, also in Formosa do Rio Preto, together with Aristides Queiroz Nogueira (6), who was arrested in 2017 for trying to destroy a neighbour's fence - usually an act of land grabbing (7). However, the lands in Formosa do Rio Preto are under dispute between Aristides Queiroz Nogueira, Ildo João Rambo and Canabrava Agropecuária (8). In January 2019, Ildo João Rambo entered into a lawsuit against IBAMA in Brazil's Supreme Court (9).

Ildo João Rambo had three embargoed areas associated with environmental degradation (2014, 2015, and 2017) within its properties in Barreiras (BA). There is an environmental license for the "legal" clearance of 3,744 ha of native vegetation for cattle ranching in a bordering farm under the same ownership. This license was active until 7/25/2019 (10), and could be linked to the deforestation pointed to in previous Rapid Response reports 1 and 5 (11, 12). In 2012, Ildo João Rambo received a license to grow eucalyptus in its Fazenda São João in Barreiras (BA) (13).

(1) <http://www.novoeste.com/index.php?page=destaque&op=readNews&id=6112>

(2) <http://aiba.org.br/quem-e-quem/>

(3) [http://compras.dados.gov.br/fornecedores/doc/fornecedor\\_pf/170807](http://compras.dados.gov.br/fornecedores/doc/fornecedor_pf/170807)

(4) [http://www.agricultura.gov.br/assuntos/riscos-seguro/seguro-rural/documentos-seguro-rural/Bahia\\_PSR.xlsx](http://www.agricultura.gov.br/assuntos/riscos-seguro/seguro-rural/documentos-seguro-rural/Bahia_PSR.xlsx)

(5) <https://www.brasilcnpi.com/empresa/rodo-rambo-transporte-de-cargas-ltda/c9qAk5qwD>

(6) <https://www.mp.ba.gov.br/sites/default/files/biblioteca/diariojustica/20180504.pdf>

(7) <https://www.blogbahia.com/2017/12/policia-militar-de-formosa-do-rio-preto.html>

(8) [https://www.jusbrasil.com.br/diarios/documentos/520424028/andamento-do-processo-n-0000035-5220078050081-reintegracao-manutencao-de-posse-14-11-2017-do-tjba?ref=topic\\_feed](https://www.jusbrasil.com.br/diarios/documentos/520424028/andamento-do-processo-n-0000035-5220078050081-reintegracao-manutencao-de-posse-14-11-2017-do-tjba?ref=topic_feed)

(9) <https://www.jusbrasil.com.br/diarios/documentos/667036885/andamento-do-processo-n-1148-0720164013303-acao-ordinaria-24-01-2019-do-trf-1>

(10) <http://dovirtual.ba.gov.br/egba/reader2>

(11) [http://www.mightyearth.org/wp-content/uploads/Rapid-Response\\_Soy-and-Cattle\\_Report-1.pdf](http://www.mightyearth.org/wp-content/uploads/Rapid-Response_Soy-and-Cattle_Report-1.pdf)

(12) [http://www.mightyearth.org/wp-content/uploads/Rapid-Response\\_soy-and-cattle\\_report-5.pdf#new\\_tab](http://www.mightyearth.org/wp-content/uploads/Rapid-Response_soy-and-cattle_report-5.pdf#new_tab)

(13) <https://www.barreiras.ba.gov.br/diario/pdf/diario1407.pdf>

# Glossary

---

**Deforestation and land clearance** - Any land use change already classified as loss of native vegetation by deforestation alert systems

**Agrarian conflicts** - Include conflicts about land tenure, natural resources (water, forests), slave labor, other crimes, and human right issues

**Embargoed areas** - Areas where any kind of activity is suspended or not authorized by the Federal Environmental Agency (IBAMA) due to environmental degradation or irregularity

**Environmental fines** - List of environmental infractions that resulted in fines addressed to the owner of the property where the crimes were found

**Forest Code protected areas** - Areas defined by the Brazilian Forest Code that have mandatory conservation status in private properties. *Legal Reserves* [80% Amazonia biome, 35% Cerrado biome inside Legal Amazon, 20% other areas] and *Permanent Preservation Areas (APP)* linked to water and soil conservation (close to river bases, wetlands, slopes, and high hills). The Legal Reserve and APP areas considered in this report are those self-declared within the Environmental Register System “Cadastro Ambiental Rural – CAR”. In some cases, the CAR was also used to find information on ownership because even if it is a self-declared document, sometimes, it provides the most recent information on the probable ownership of a property.

**Illegal deforestation** - Any deforestation event happening without an authorization of the state or federal environmental agency or those that are inside a Legal Reserve or a Permanent Preservation Area (APP)

**Natural Reserves** - Officially recognized Natural Reserves according to the National System of Natural Reserves (SNUC – Sistema Nacional de Unidades de Conservação). The SNUC determines jurisdiction of the area - federal, state or local government, or private owner - and how the natural resources may be used by whom in each of the natural reserves’ categories.

**Indigenous lands** - Lands under FUNAI (National Foundation for Indigenous People) defined as a heritage right of local indigenous populations where any activity not linked to these groups is not allowed.

**Priority for Biodiversity conservation** - Brazilian Ministry of Environment (MMA) study listing the biodiversity hotspots in Brazil and the priority of actions for biodiversity conservation in these areas.

\* \* \* \*

*The Rapid Response program has received support, in part, from the International Climate and Forest Initiative (NICFI) scheme managed by the Norwegian Agency for Development Cooperation (Norad). This report does not necessarily reflect the standpoints of Norad.*

*The work of Mighty Earth is supported by Waxman Strategies. Waxman Strategies’ work on forest conservation is funded in part by Aidenvironment. Waxman is required under 22 U.S.C. § 614 to disclose that this material is distributed on behalf of the aforementioned organization, working under grant from the Norwegian Agency for Development Cooperation. Additional information is on file with the Department of Justice, Washington, D.C.*