



Mighty Earth Rapid Response Report 12

Indonesian companies:

PT Kapuasindo Palm Industri, PT Kartika Cipta Pratama, PT Palem Segar Lestari,
PT Sawit Berkat Sejahtera, PT Internusa Jaya Sejahtera, PT Marita Makmur Jaya,
PT Persada Era Agro Kencana, PT Sebaung Sawit Plantations, PT Dwiwira Lestari Jaya,
PT Krida Dharma Kahuripan, PT Sentosa Suksesutama

Malaysian company:

Jaya Tiasa / Rimbunan Hijau Group

January 2019

Prepared with support from Aidenvironment and MapHubs

Table of contents

Indonesian Companies

Evershine Asset Corporation and Everbright Resources Corporation – PT Kapuasindo Palm Industry	3
HSA Group – PT Kartika Cipta Pratama	6
Henan Jiujiu Chemical Co. Ltd. – PT Palembang Segar Lestari	9
Unknown Group – PT Sawit Berkat Sejahtera	12
Indonusa Agromulia Group/Indonusa Group – PT Internusa Jaya Sejahtera	14
Mariya family – PT Marita Makmur Jaya	17
Mulia Sawit Group – PT Persada Era Agro Kencana	19
Pundi Group - PT Pinang Witmas Abadi	22
Shanghai Xinjiu Chemical Co. Ltd. – PT Sebaung Sawit Plantations	25
Triputra Agro Persada - PT Dwiwira Lestari Jaya	27
Unknown group – PT Krida Dharma Kahuripan	30
Wings Group Indonesia – PT Sentosa Suksesutama	32

Malaysian Companies

Rimbunan Hijau Group / Jaya Tiasa Holding Berhad - LPF/0024	35
References	38

Evershine Asset Corporation and Everbright Resources Corporation

PT Kapuasindo Palm Industry

PT Kapuasindo Palm Industry is located in Kapuas Hulu Regency, West Kalimantan. The concession covers an area of 18,443 hectares¹.

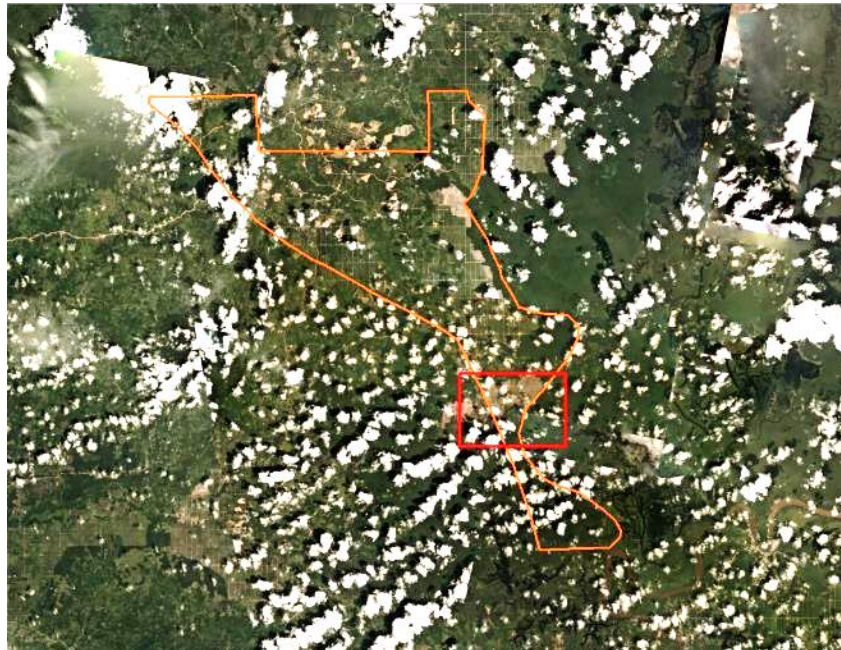
(Long: 111°49'16.50"E, Lat: 0°46'42.77"N)



Deforestation

Report	Deforestation (ha)	Peat development (ha)	Peat forest development (ha)	Clearance prep/Stacking lines (ha)	Time period
Report 5	33	-	26	-	April 22 – June 22, 2018
Report 6	-	-	35	60	June 22 – July 24, 2018
Report 12	-	65	44	-	November 28, 2018 – January 10, 2019

Satellite imagery (see below) shows that between November 28, 2018 and January 10, 2019, a total of 44 hectares of peat forest were cleared and an additional 65 hectares of peat was developed in the PT Kapuasindo Palm Industry concession. (Imagery © 2019 Planet & Sentinel-2).



Alert Imagery (before and after satellite images)

Date: Nov 28, 2018



Date: Jan 10, 2019



Ownership Information

Group: Evershine Asset Corporation and Everbright Resources Corporation

PT Kapuasindo Palm Industry is owned by Evershine Asset Corporation (90%) and Everbright Resources Corporation (10%), through PT Kencana Agung Lestari and PT Binanusa Mukti Sentosa. Everbright Resources Corporation also ultimately owns PT Buana Tunas Sejahtera and PT Sentrakarya Manunggal. The companies all share the same President Director (Johanes Ibrahim Tjendana), Director (Juliana Lukmin) and President Commissioner Ricky Surjana).

Identity	Ownership	Position
Johanes Ibrahim Tjendana	-	President Director
Juliana Lukmin	-	Director
Dr. Ing. Ricky Sujana	-	President Commissioner

Supply Chain Information

Traders:

Supply chain links:	AAK	ADM	Cargill	KLK
PT Kapuasindo Palm Industry				
Evershine Asset and Everbright Resources Corporation	X	X	X	X

Consumer Brands:

Supply chain links:	General Mills	Hershey	Kellogg's	Mars	Nestlé	Pepsi Co	P&G	Reckitt Benckiser	Unilever
PT Kapuasindo Palm Industry									
Evershine Asset and Everbright Resources Corporation	X	X	X	X	X (via ADM, Bunge, Fuji Oil)	X	X	X	X

HSA Group

PT Kartika Cipta Pratama

PT Kartika Cipta Pratama is located in Boven Digoel Regency, West Kalimantan. The concession covers an area of 41,257 hectares².

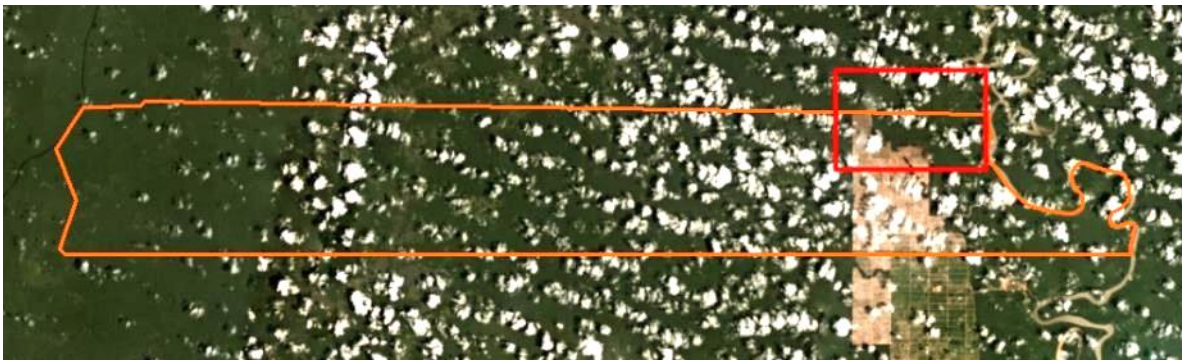
(Long 140°12'31.6"E, Lat 6°20'26.6"S)



Deforestation

Report	Deforestation (ha)	Peat development (ha)	Peat forest development (ha)	Clearance prep/Stacking lines (ha)	Time period
Report 5	322	-	-	-	March 31 – May 31, 2018
Report 7	828	-	-	-	May 30 – August 13, 2018
Report 9	781	-	-	-	August 13 – October 8, 2018
Report 10	363	-	-	-	October 8 – November 7, 2018
Report 11	227	-	-	-	November 7 – December 6, 2018
Report 12	286	-	-	-	December 6, 2018 – January 11, 2019

Satellite imagery (see below) shows that between December 6, 2018 and January 11, 2019, a total of 286 hectares of forest were cleared in the PT Kartika Cipta Pratama concession. (Imagery © 2019 Planet Labs Inc & Sentinel-2).

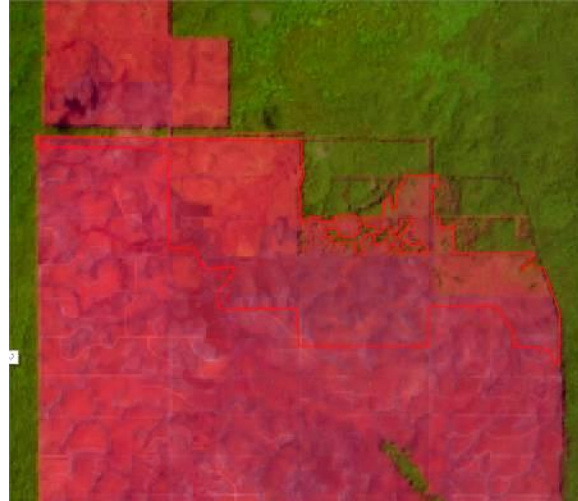
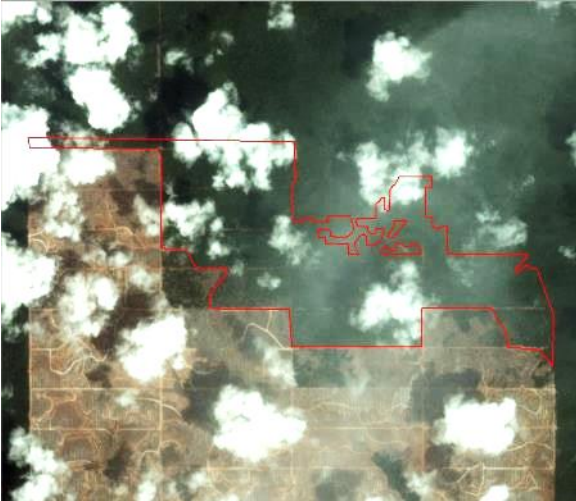


² Pelepasan Kawasan Hutan, 2018

Alert Imagery (before and after satellite images)

Date: Dec 6, 2018

Date: Jan 11, 2019



Ownership Information

Group: HSA Group

In 2012, four UAE holding companies (Prestige Holding Ltd., Malindo Investments Ltd, Crescent Investments Ltd, and Green Resources Ltd) believed to be affiliated with the Yemen-based HSA Group purchased 80% stake of each of these four companies located in the Boven Digoel district of West Papua, Indonesia: PT Megakarya Jaya Raya, PT Kartika Cipta Pratama, PT Graha Kencana Mulia and PT Energi Samudera Kencana. PT Megakarya Jaya Raya and PT Kartika Cipta Pratama are two concessions involved in Tanah Merah project in Boven Digoel Regency. These concessions cover a combined 155,330 hectares. Since January 2014, around 5,000 hectares of forest have been cleared in PT Megakarya Jaya Raya and PT Kartika Cipta Pratama.

Up until June 5, 2018, the four plantation companies had Fouad Hayel Saeed Anam listed as President Commissioner on their notary acts. Fouad Hayel Saeed is Regional Director-Malaysia of the HSA Group and Managing Director of Pacific Inter-Link, the group's subsidiary. Legal documents also listed Salah Ahmed Hayel Saeed as Commissioner of PT Energi Samudera Kencana & PT Megakarya Jaya Raya and President Director of PT Graha Kencana Mulia & PT Kartika Cipta Pratama. Hayel Saeed is Director of Pacific Inter-Link's refining division, PT Pacific Palmindo Industri. Recent notary acts confirm that on June 5, 2018, Fouad Hayel Saeed ceased to be President Commissioner of PT Megakarya Jaya Raya and PT Kartika Cipta Pratama, and Salah Ahmed Hayel Saeed is no longer Commissioner of PT Megakarya Jaya Raya and President Director of PT Kartika Cipta Pratama. Nakul Rastogi also disappeared from PT Kartika Cipta Pratama's notary acts.

However, June 5, 2018 notary acts does not show any change in PT Megakarya Jaya Raya, PT Kartika Cipta Pratama, PT Graha Kencana Mulia and PT Energi Samudera Kencana shareholders. Hence, it is assumed that these companies remain affiliated with the HSA Group. Little is known about the new directors of the two concessions, except that some notable individuals in Indonesian politics and business are involved. Mr. Alwi Abdurrahman Shihab, former Foreign Minister of the Indonesian government, has become President Commissioner of PT Megakarya Jaya Ray. Drs. Tommy Sagiman is now the commissioner of PT KCP. He is ex-Inspector General of the police. Nata Singh Gurdev Singh became director of PT Megakarya Jaya Raya in June 2018. Until April 2018, he worked for Sime Darby. Alwi Abdurrahman Shihab is the Indonesian President's special envoy to the Middle East and the Organisation of Islamic Cooperation.

The HSA Group is one of the oldest business conglomerate in the Middle East, founded in 1938 by Al Haj Hayel Saeed Anam and his brothers Mohamed, Abdo and Gazern. The Group is today headed by Abdul Gabbar Hayel Saeed, CEO and Chairman. The HSA Group is involved in the palm oil industry through its subsidiaries PT Pacific Palmindo Industri, PT Pacific Medan Industry, PT Pacific Indopalm Industries, Pacific Oil & Fats Industries and Pacific Inter-Link, which are all RSPO members³, and PT Pacific Indomas.

Additional evidence shows continued family links to the PT Tulen Jayamas Timber Industries timber complex, a joint-venture project with Bumimas Raya Sdn Bhd, Pacific Inter-Link Sdn Bhd, Yakin Dijaya Sdn Bhd and Al Salam Bank Bahrain' announced by Tadmax Resources in 2012.⁴ The PT Tulen Jayamas Timber Industries timber complex is situated within the PT Kartika Cipta Pratama concession.

Malindo Investments Ltd which holds 80% shares in PT Kartika Cipta Pratama (see above), also holds 40% of the shares in the Malaysian-based parent company of PT Tulen Jayamas Timber Industries – i.e. Tulen Jayamas Sdn Bhd. Mr. Salah Ahmed Hayel Saeed and Mr. Fouad Hayel Saeed Anam were directors of Tulen Jayamas Sdn Bhd, in addition to their positions in the Indonesian subsidiary (PT Tulen Jayamas Timber Industries) as of 28 April 2018.

In the period 21 February 2013 to 24 April 2018, Mr Salah Ahmed Hayel Saeed held 1 share in PT Tulen Jayamas Timber Industries, with the remaining 499 shares held by Tulen Jayamas Sdn Bhd. As of 11 November 2018 Mr Salah Ahmed Hayel Saeed and Mr Fouad Hayel Saeed Anam were no longer directors of Tulen Jayamas Sdn Bhd. However, Malindo Investments Ltd still holds 40% in Tulen Jayamas Sdn Bhd.

Between 24 April 2018 and 13 December 2018, Mr Salah Ahmed Hayel Saeed was no longer a shareholder and director in PT Tulen Jayamas Timber Industries. Also, Mr Fouad Hayel Saeed Anam ceased to be a director in PT Tulen Jayamas Timber Industries.

Supply Chain Information

The HSA Group company Pacific Inter-Link (PIL) used to trade with IOI and Nestlé, however both companies have suspended trade with the company due to concerns over its involvement in deforestation. Pacific Inter-Link claims to be one of the largest palm oil traders to the Middle East, Africa, Russia, Ukraine and Turkey.⁵

³ <https://www.rspo.org/members/617/PT.-Pacific-Palmindo-Industri>,
<https://www.rspo.org/members/3152/PT.-Pacific-Medan-Industri>,
<https://www.rspo.org/members/714/pt-pacific-indopalm-industries>,
<https://www.rspo.org/members/602/Pacific-Oils-Fats-Industries-Sdn-Bhd>,
<https://www.rspo.org/members/304/pacific-inter-link-sdn-bhd>

⁴ See: Bursa Malaysia bit.ly/2z9WNq4 and Tadmax Annual Report 2012
bit.ly/2QN2cbF

⁵ Pacific Inter-Link corporate brochure



Henan Jiujiu Chemical Co. Ltd.

PT Palem Segar Lestari

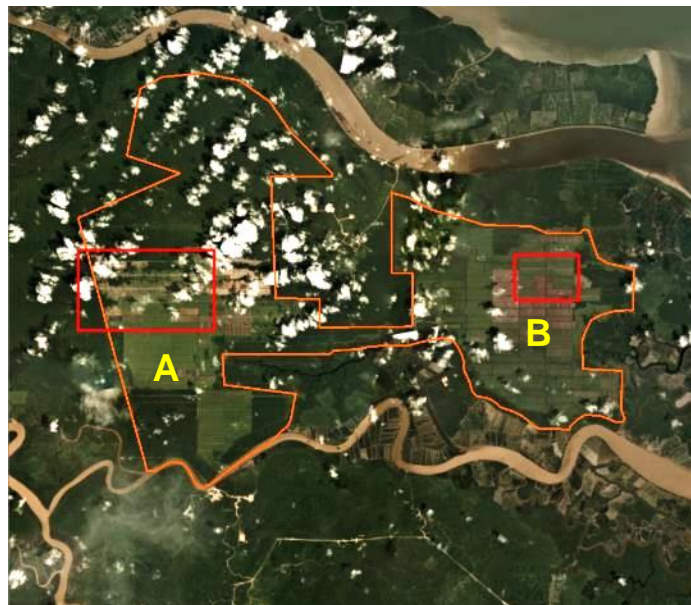
PT Palem Segar Lestari is located in Nunukan Regency, North Kalimantan. The concession covers a total area of 14,433 hectares⁶. (Long 117°32'19.68"E, Lat 3°50'2.05"N)



Deforestation

Report	Deforestation (ha)	Peat development (ha)	Peat forest development (ha)	Clearance Prep/Stacking lines (ha)	Time Period
Report 5	-	-	143	-	April 7 – June 14, 2018
Report 7	-	91	-	-	June 14 – August 9, 2018
Report 12	-	44	-	-	December 18, 2018 – January 10, 2019 (Area A & Area B)

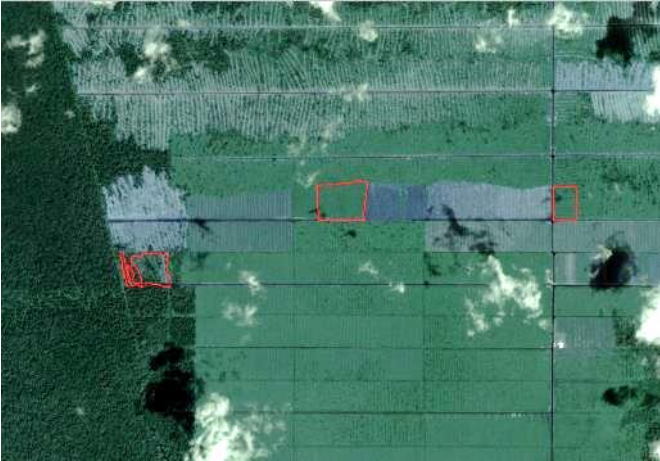
Satellite imagery (see below) shows that between December 18, 2018 and January 10, 2019, a total of 44 hectares of peat was developed in the PT Palem Segar Lestari concession - Area A and B. (Imagery © 2019 Planet).



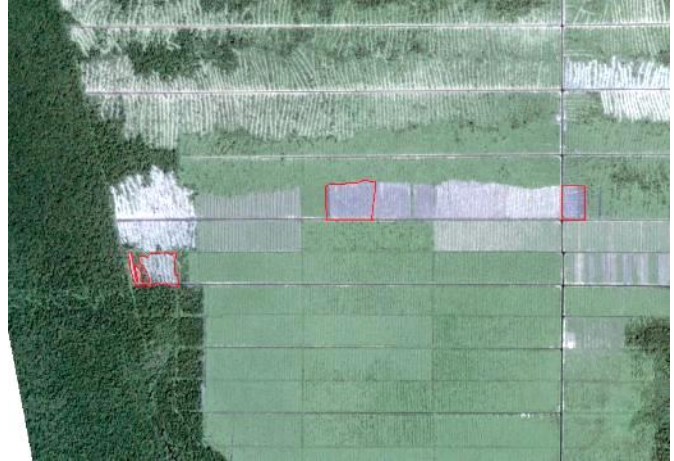
⁶ Dinas Perkebunan Kalimantan Utara 2012

Alert Imagery (before and after satellite images)

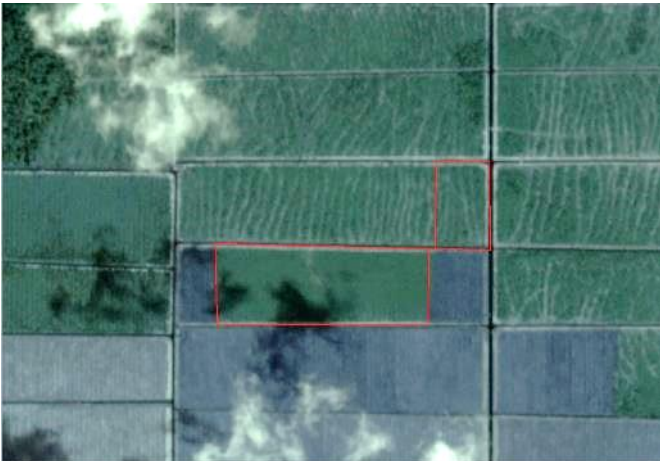
Date: Dec 18, 2018 Area A



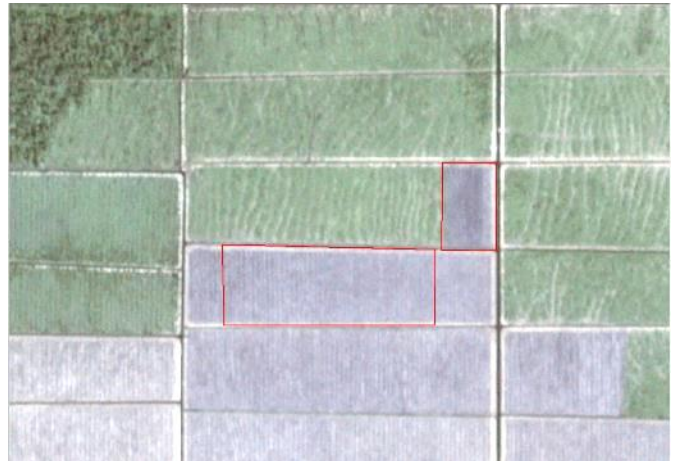
Date: Jan 10, 2019 Area A



Date: Dec 18, 2018 Area B



Date: Jan 10, 2019 Area B



Ownership Information

Group: Henan Jiujiu Chemical Co. Ltd.

PT Palem Segar Lestari is 90% owned by Henan Jiujiu Chemical Co. Ltd and 10% owned by PT Citra Makmur Sentosa. Henan Jiujiu Chemical Co. Ltd is a China-registered company specializing in fatty acids and derivative products.

Mr. Tjia Ke Seng (alias 'Dachlan'), a Chinese citizen, is the President Director of PT Palem Segar Lestari⁷. He is also the Director of PT Sebaung Sawit Plantation, also located in North Kalimantan.

Identity	Ownership	Position
Mao Chunning	-	President Commissioner
Tjia Ke Seng/Dachlan	-	President Director

Supply Chain Information

No supply chain information available.

⁷ Notary Act

Unknown group PT Sawit Berkat Sejahtera

PT Sawit Berkat Sejahtera is located in Bulungan Regency, North Kalimantan. The concession covers an area of 7,613 hectares⁸.

(Long 117°34'6.17"E, Lat 2°33'32.50"N)



Deforestation

Report	Deforestation (ha)	Peat development (ha)	Peat forest development (ha)	Clearance prep/Stacking lines (ha)	Time period
Report 12	21	-	-	-	December 17, 2018 – January 7, 2019

Satellite imagery (see below) shows that between December 17, 2018 and January 7, 2019, a total of 21 hectares of forest were cleared in the PT Sawit Berkat Sejahtera concession. (Imagery © 2019 Planet Labs Inc).

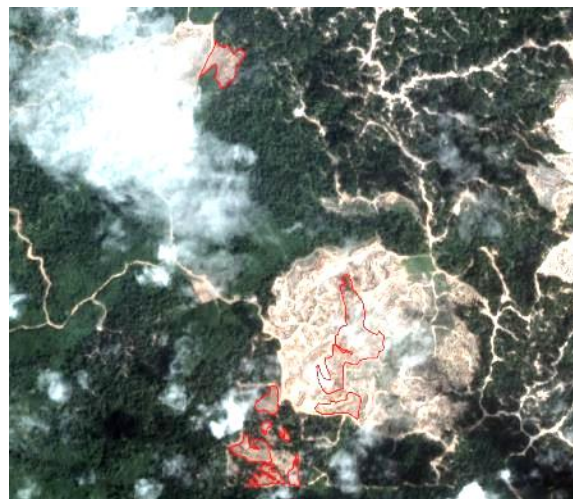


⁸ Kadastral Kalimantan Timur, 2012

Alert Imagery (before and after satellite images)

Date: Dec 17, 2018

Date: Jan 7, 2019



Ownership Information

Group: Unknown

PT Sawit Berkhat Sejahtera is owned (99%) by Mr. Ir. Daud through PT Cahaya Agro Pratama. He is the Director of PT Sawit Berkhat Sejahtera and PT Cahaya Agro Plantation, and also served as the President Director of PT Rimbun Sawit Papua⁹.

Identity	Ownership	Position
Tuan Wiandi Halisantoso	1%	Commissioner
Ir. Daud	99%	Director

Supply Chain Information

No supply chain information available

⁹ Notary Act

Indonusa Agromulia group

PT Internusa Jaya Sejahtera

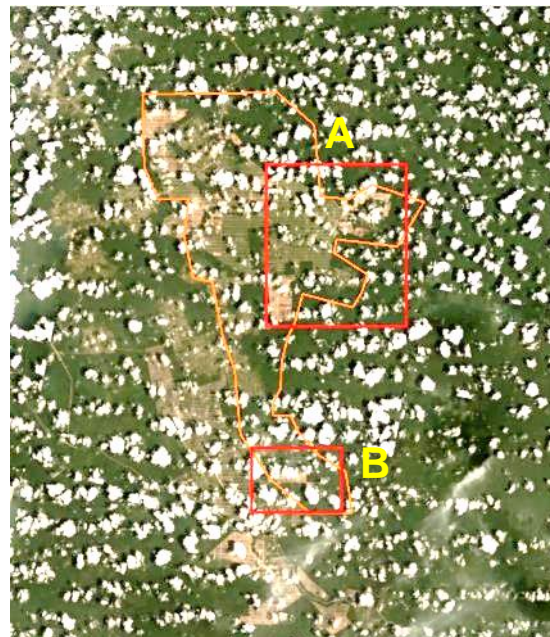
PT Internusa Jaya Sejahtera is located in Papua province. The concession covers an area of 25,395 hectares¹⁰.
(Long 140°48'22.6"E, Lat 7°19'30.0"S)



Deforestation

Report	Deforestation (ha)	Peat development (ha)	Peat forest development (ha)	Clearance prep/Stacking lines (ha)	Time period
Report 7	502	-	-	168	March 9 – July 28, 2018
Report 10	517	-	-	-	July 28 – Oct 9, 2018
Report 11	635	-	-	-	October 9 – December 4 and October 6 – December 11, 2018
Report 12	217	-	-	-	December 4, 2018 – January 6, 2019 (Area A) and December 11, 2018 – January 6, 2019 (Area B)

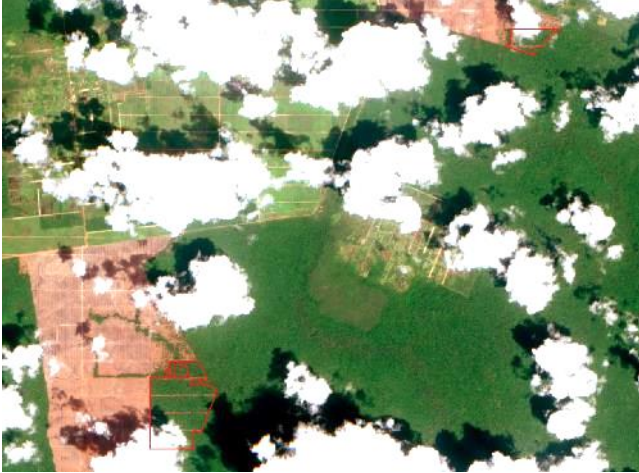
Satellite imagery (see below) shows that between December 4, 2018 and January 6, 2019, a total of 109 hectares of forest were cleared in Area A of the PT Internusa Jaya Sejahtera concession. Also, between December 11, 2018 and January 6, 2019, a total of 108 hectares of forest were cleared in Area B of the PT Internusa Jaya Sejahtera concession. (Imagery © 2019 Planet & Landsat 8 Imagery 2019).



¹⁰Dinas Perkebunan Papua 2015

Alert Imagery (before and after satellite images)

Date: Dec 4, 2018 Area A



Date: Jan 6, 2019 Area A



Date: Dec 11, 2018 Area B



Date: Jan 6, 2019 Area B



Ownership Information

Group: Indonusa Agromulia Group/Indonusa Group

PT Internusa Jaya Sejahtera is part of Indonusa Agromulia Group, commonly known as Indonusa group. PT Internusa Jaya Sejahtera is owned by Rosna Tjuatja (99.87%), who sits as the Commissioner on the Indonusa Agromulia Group and also serves as President commissioner at PT Profindo International Securities.¹¹

Identity	Ownership	Position
Rosna Tjuatja	99.87%	Commissioner

Supply Chain Information

Traders:

Supply chain links:	ADM	Apical	PIL
PT Internusa Jaya Sejahtera			
Indonusa Group	X	X	X

Consumer Brands:

Supply chain links:	Kellogg's	Reckitt Benckiser
PT Internusa Jaya Sejahtera		
Indonusa Group	X	X

¹¹ https://profindo.com/?page_id=57&lang=id

Mariya family

PT Marita Makmur Jaya

PT Marita Makmur Jaya is located in Bengkalis Regency, Riau. The concession covers an area of 6,612 hectares¹². (Long 101°29'5.18"E, Lat 2° 2'7.99"N)



Deforestation

Report	Deforestation (ha)	Peat development (ha)	Peat forest development (ha)	Clearance prep/Stacking lines (ha)	Time period
Report 12	52	-	-	-	December 24, 2018 – January 12, 2019

Satellite imagery (see below) shows that between December 24, 2018 and January 12, 2019, a total of 52 hectares of forest were cleared in the PT Marita Makmur Jaya concession. (Imagery © 2019 Planet Labs Inc.)

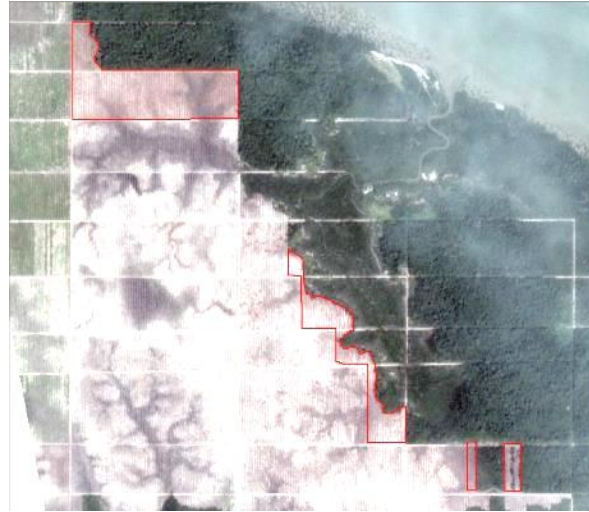
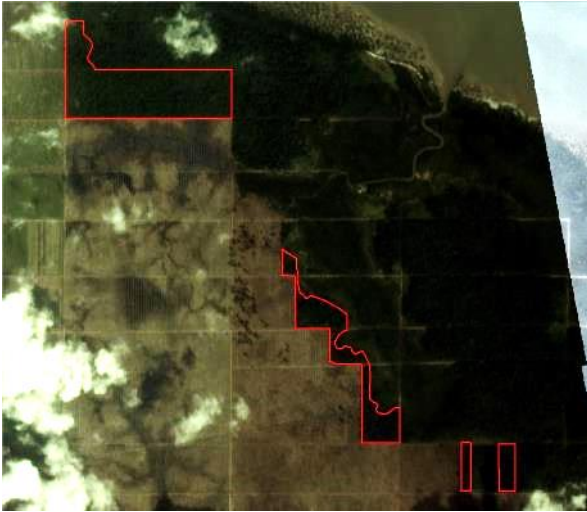


¹² Kadastral Riau, 2012

Alert Imagery (before and after satellite images)

Date: Dec 24, 2018

Date: Jan 12, 2019



Ownership Information

Family: Mariya

PT Marita Makmur Jaya is 70% owned by Ms Mariya, who is the currently the Commissioner, 20% by Marita family members and 10% by Sidharta.

Identity	Ownership	Position
Ms Mariya	70%	Commissioner
Gulberson Simare Mare	-	Director
Sidharta	10%	-
Jenny Marita	5%	-
Dessy Marita	5%	-
Sally Marita	5%	-
Harry Marita	5%	-

Supply Chain Information

No supply chain information available.

Mulia Sawit group

PT Persada Era Agro Kencana

PT Persada Era Agro Kencana is located in Katingan district, Central Kalimantan. The concession covers an area of 12,933 hectares¹⁴.

(Long 113° 17' 02" E, Lat 2° 34' 09" S).



Deforestation

Report	Deforestation (ha)	Peat development (ha)	Peat forest development (ha)	Clearance prep/Stacking lines (ha)	Time period
Report 9	-	-	129	-	August 27 – September 25, 2018
Report 10	-	383	-	-	August 27 – October 31, 2018
Report 11	-	200	189	-	September 25 – December 1, 2018 and October 31 – December 5, 2018
Report 12	-	-	189	-	December 5, 2018 – January 7, 2019

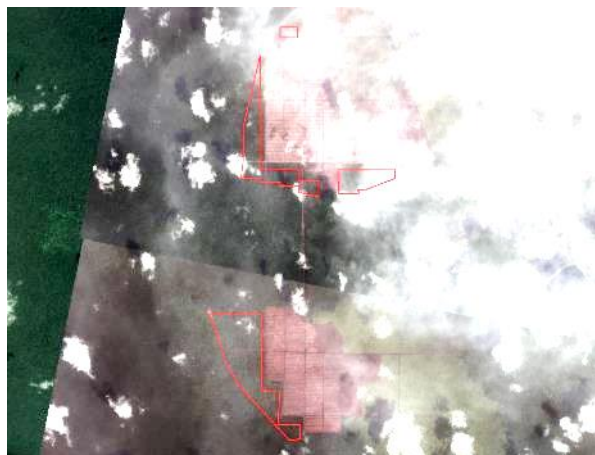
Satellite imagery (see below) shows that between December 5, 2018 and January 7, 2019, a total of 189 hectares of peat forest were developed in the PT Persada Era Agro Kencana concession. (Imagery © 2019 Planet Labs Inc).



Alert Imagery (before and after satellite images)

Date: Dec 5, 2018

Date: Jan 7, 2019



Ownership Information

Group: Mulia Sawit group

PT Persada Era Agro Kencana is a subsidiary of Mulia Sawit group. Mulia Sawit group is owned by Kurnia Lukman Goutama, Tjio Andre Yenatha, Kevin Wusman and Sanjaya Lukman. Tjio Andra Yenatha, known as Andre, also serves as a Director of PT Bangun Jaya Alam Permai of the Best Plantation Group.¹⁵

Identity	Ownership	Position
Kurnia Lukman Goutama	-	Director
Tjio Andre Yennatha	-	Director
Kevin Wusman	-	Director
Sanjaya Wusman	-	Director

¹⁵ Notary Acts

Supply Chain Information

Traders:

Supply chain links:	ADM	Apical	Fuji Oil	Musim Mas
PT Persada Era Agro Kencana				
Mulia Sawit group	X	X	X	X

Consumer Brands:

Supply chain links:	General Mills	Kellogg's	Mars	Mondelez	Nestlé	PepsiCo	PZ Cussons
PT Persada Era Agro Kencana							
Mulia Sawit group	X	X	X	X (via Apical)	X (via Bunge)	X	X

Pundi Group

PT Pinang Witmas Abadi

PT Pinang Witmas Abadi is located in Kubu Raya Regency, West Kalimantan. The concession covers an area of 10,680 hectares¹⁶.

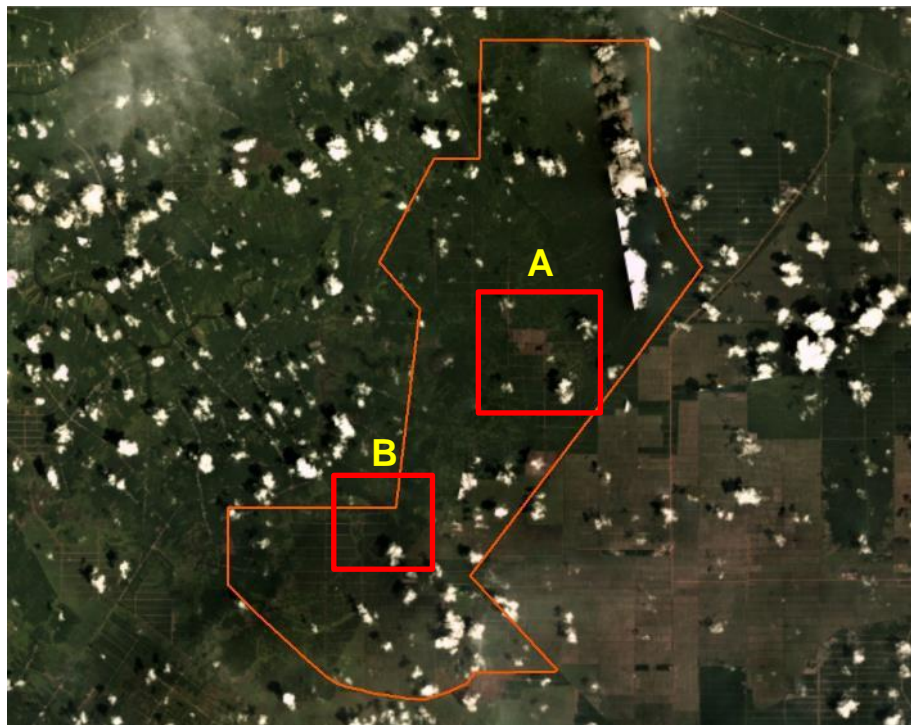
(Long 109°38'17.67"E, Lat 0° 6'38.97"S).



Deforestation

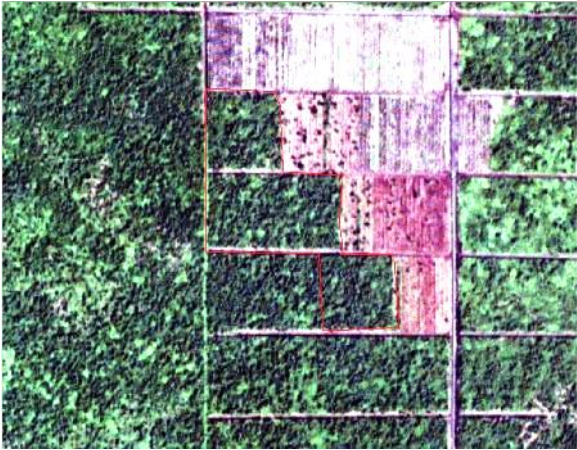
Report	Deforestation (ha)	Peat development (ha)	Peat forest development (ha)	Clearance prep/Stacking lines (ha)	Time period
Report 10	-	-	168	1,487	July 16 – October 22, 2018
Report 11	-	-	79	-	October 22 – December 9, 2018
Report 12	-	-	66	-	December 9, 2018 – January 10, 2019 (Area A and Area B)

Satellite imagery (see below) shows that between December 9, 2018 and January 10, 2019 (Area A and B) a total of 66 hectares of peat forest were developed in the PT Pinang Witmas Abadi concession. (Imagery © 2019 Planet Labs Inc.)



Alert Imagery (before and after satellite images)

Date: Dec 9, 2018 Area A



Date: Jan 10, 2019 Area A



Date: Dec 9, 2018 Area B



Date: Jan 10, 2019 Area B



Ownership Information

Group: Pundi group

PT Pinang Witmas Abadi is owned by PT Pundi Bhakti Khatulistiwa through PT Pundi Lahan Khatulistiwa, which is located in Kubu Raya, West Kalimantan. Currently, the Director of Pundi Bhakti Khatulistiwa is The Kie Jok, who also serves as the President Director of PT Pundi Lahan Khatulistiwa. Mr. Suryadi Polem is the main shareholder in both PT Pundi Lahan Khatulistiwa and PT Pundi Bhakti Khatulistiwa.¹⁷ Ownership of PT Pundi Bhakti Khatulistiwa is shown below.

Identity	Ownership	Position
Suryadi Polem	40%	President Commisioner
Iwan Koniman	10%	Commissioner
Herry Utomo	2.5%	President Director
The Kie Hok	10%	Director
Roesman Nilam	10%	-
Haji Soedarso Luslim	5%	-

Supply Chain Information

Traders:

Supply chain links:	ADM	Cargill	Fuji Oil
PT Pinang Witmas Abadi			
Pundi group	x	x	x

Consumer Brands:

Supply chain links:	General Mills	Hershey	Kellogg's	Mars	Mondelez	Nestlé	Pepsi Co	P&G	PZ Cussons
PT Pinang Witmas Abadi									
Pundi group	x	x	x	x	x (via Bunge, IOI)	x (via Bunge)	x	x	x



¹⁷ Notary Acts

Shanghai Xinjiu Chemical Co. Ltd.

PT Sebaung Sawit Plantations

PT Sebaung Sawit Plantations is located in Nunukan Regency, North Kalimantan. The concession covers an area of 15,304 hectares¹⁸.

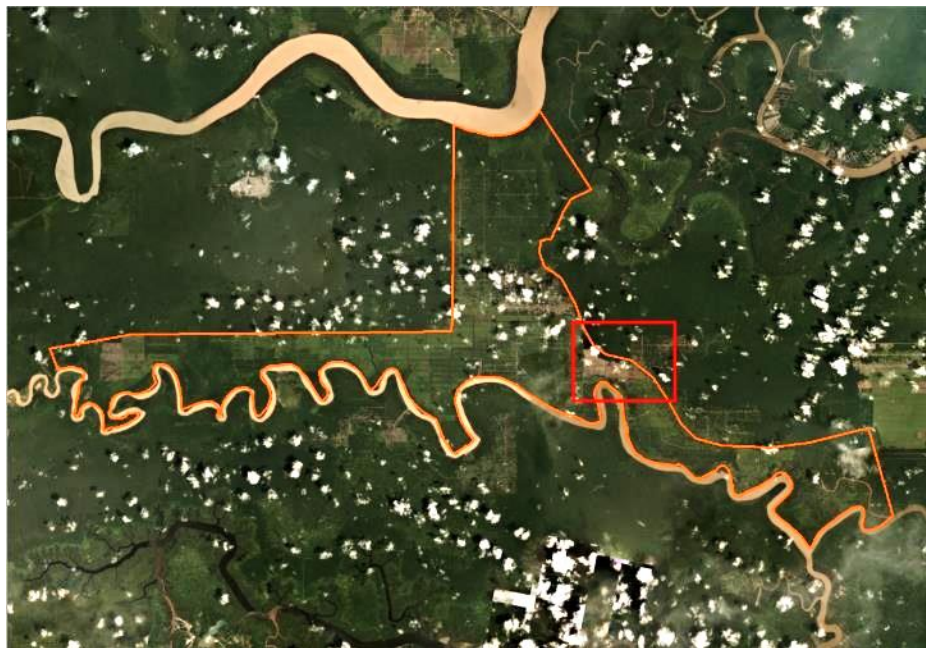
(Long 117°21'45.73"E, 3°51'23.24"N)



Peat development

Report	Deforestation (ha)	Peat development (ha)	Peat forest clearance (ha)	Clearance prep/ stacking lines (ha)	Time period
Report 8	-	198	-	-	July 25 – September 18, 2018 (A & B) and July 25 – August 29, 2018
Report 12	-	48	-	-	October 24, 2018 – January 6, 2019

Satellite imagery (see below) shows that between October 24, 2018 and January 6, 2019, a total of 48 hectares of peat were developed in PT Sebaung Sawit Plantations concession (Imagery © 2019 Planet Labs Inc.)



¹⁸ Dinas Perkebunan Kalimantan Utara Tahun 2012

Alert Imagery (before and after satellite images)

Date: Oct 24, 2018



Date: Jan 6, 2019



Ownership Information

Group: Shanghai Xinjiu Chemical Co. Ltd.

PT Sebaung Sawit Plantations is owned by Shanghai Xinjiu Chemical Co. Ltd (90%) and by PT Citra Makmur Sentosa (10%). Shanghai Xinjiu Chemical Co. Ltd is a China-registered company specializing in fatty acids and derivative products.

Mr. Tjia Ke Seng (alias 'Dachlan'), a Chinese citizen, is the President Director of PT Sebaung Sawit Plantations¹⁹. He is also the Director of PT Palembang Segar Lestari, also located in North Kalimantan.

Identity	Ownership	Position
Mao Chunning	-	President Commissioner
Tjia Ke Seng/Dachlan	-	President Director

Supply Chain Information

No supply chain information available.

¹⁹ Notary Acts

Triputra Agro Persada group

PT Dwiwira Lestari Jaya

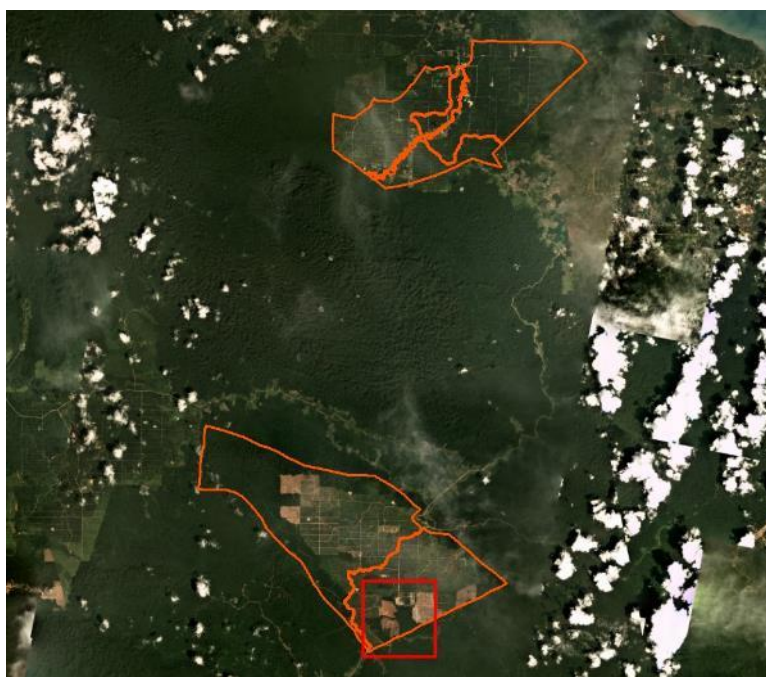
PT Dwiwira Lestari Jaya is located in Berau Regency, East Kalimantan. The concession covers an area of 12,665 hectares.²⁰
(Long 117°59'35.86"E, Lat 1°23'13.30"N



Deforestation

Report	Deforestation (ha)	Peat development (ha)	Peat forest development (ha)	Clearance prep/Stacking lines (ha)	Time period
Report 12	56	-	-		November 23, 2018 – January 12, 2019

Satellite imagery (see below) shows that between November 23, 2018 and January 12, 2019, a total of 56 hectares of forest were cleared in the PT Dwiwira Lestari Jaya concession. (Imagery © 2019 Planet Labs Inc).



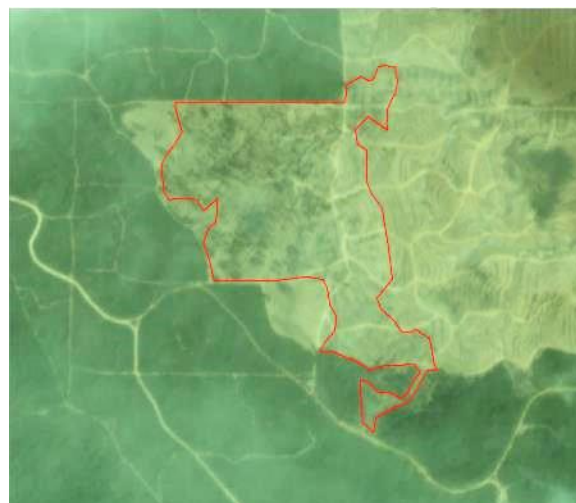
²⁰Kadastral Kalimantan Timur, 2012

Alert Imagery (before and after satellite images)

Date: Nov 23, 2018



Date: Jan 12, 2019



Ownership Information

Group: Triputra Agro Persada Group (Triputra Group)

PT Dwiwira Lestari Jaya is part of the Triputra Agro Persada Group (TAP), which is in turn part of Triputra Group.²¹ The Triputra Group was founded by Theodore Permadi Rachma and Benny Subantio. Mr. Arif Rachmat is the CEO of TAP and is a Director of Triputra group²².

Identity ²⁴	Ownership	Position
Theodore Permadi Rachmat		Founder
Arif P. Rachmat		CEO of TAP and Director of Triputra
Tjandra Karya Hermanto		President Director of TAP

²¹ <http://bit.ly/2FLGGUE>

²² <http://bit.ly/2Wf9NVh>; www.triputra-group.com/#People

Supply Chain Information

Traders:

Supply chain links:	AAK	ADM	Apical	Bunge LC	Cargill	Fuji Oil	GAR	KLK	LDC	Musim Mas	Sime Darby	Wilmar
PT Dwiwira Lestari Jaya	X	X	X	X	X			X		X	X	X
TAP Group	X	X	X	X	X	X	X	X	X	X	X	X

Consumer Brands:

Supply chain links:	General Mills	Hershey	Kellogg's	Mars	Mondelez	Nestlé	P&G	Pepsi Co	PZ Cussons	Reckitt Benckiser
PT Dwiwira Lestari Jaya	X	X		X	X (via AAK, Wilmar)	X (via AAK, Bunge, Fuji Oil)	X			X
TAP Group	X	X	X	X	X	X	X	X	X	X

Unknown group

PT Krida Dharma Kahuripan

PT Krida Dharma Kahuripan is located in Katingan Regency, Central Kalimantan. The concession covers an area of 13,382 hectares²³.

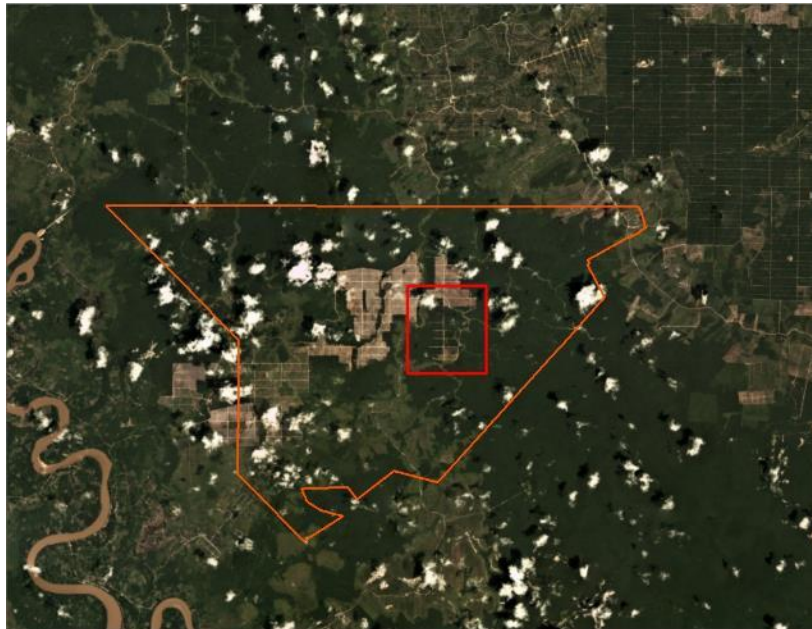
(Long: 113°21'2.52"E, Lat: 1°35'59.06"S)



Deforestation

Report	Deforestation (ha)	Peat development (ha)	Peat forest development (ha)	Clearance prep/Stacking lines (ha)	Time period
Report 4	147	-	-	-	March 12 – June 6, 2018
Report 6	87	-	-	28	June 6 – July 6, 2018
Report 11	345	-	-	-	July 10 – November 20, 2018
Report 12	106	-	-	-	November 20, 2018 – December 31, 2018

Satellite imagery (see below) shows that between November 20 and December, 2018, a total of 106 hectares of forest were cleared in the PT Krida Dharma Kahuripan concession. (Imagery © 2018 Planet Labs Inc.)



²³Active Company, Kalimantan Tengah

Alert Imagery (before and after satellite images)

Date: Nov 20, 2018

Date: Dec 31, 2018



Ownership Information

Group: No information group

PT Krida Dharma Kahuripan has previously been reported to be part of the Makin Group. The company claims that the location permit (ILOK) of PT Krida Dharma Kahuripan was returned to the local government (Katingan Regency) in July 2017 and the concession land is categorized by the government as production forest area and therefore cannot be converted to plantations.

Supply Chain Information

No supply chain information available.

Wings Group Indonesia

PT Sentosa Suksesutama

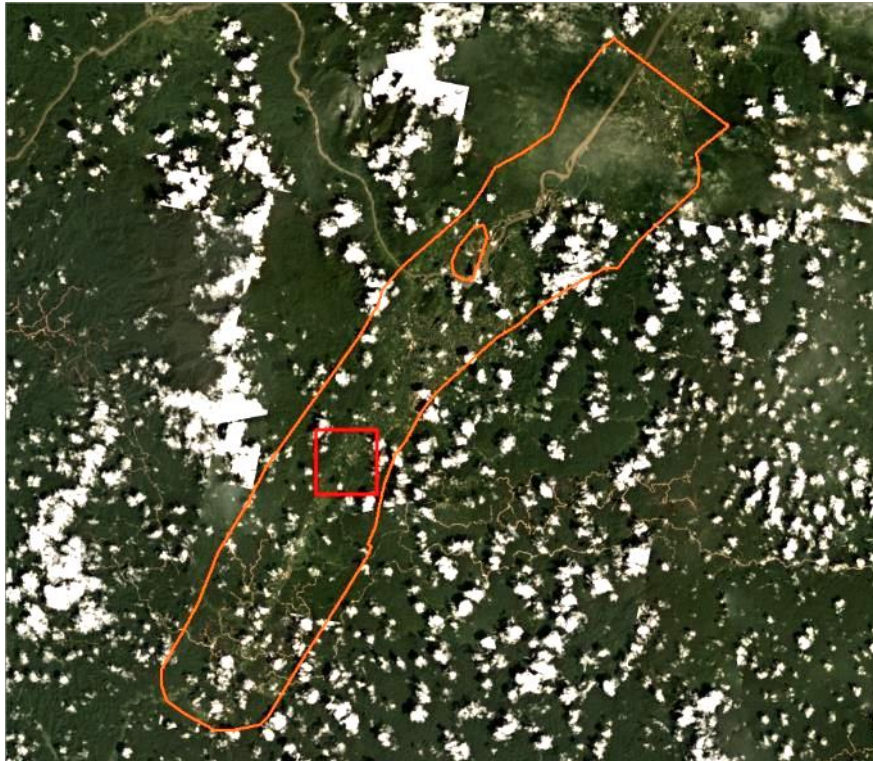
PT Sentosa Suksesutama is located in Bulungan Regency, North Kalimantan. The concession covers an area of 22,612 hectares²⁴.

(Long 116°44'57.27"E, Lat 2°38'47.65"N



Report	Deforestation (ha)	Peat development (ha)	Peat forest development (ha)	Clearance prep/Stacking lines (ha)	Time period
Report 12	6	-	-		November 19, 2018 – January 12, 2019

Satellite imagery (see below) shows that between November 19, 2018 and January 12, 2019, a total of 6 hectares of forest were cleared in the PT Sentosa Sukses Utama concession. (Imagery © 2019 Planet Labs Inc.)



²⁴ Dinas Perkebunan Kalimantan Utara, 2012

Alert Imagery (before and after satellite images)

Date: Nov 19, 2018

Date: Jan 12, 2019



Ownership Information

Group: Wings Group Indonesia

PT Sentosa Suksesutama is part of Wings Group Indonesia (also known as Katuari Family Group) through PT Gawi Makmur Kalimantan, PT Wahana Wings Surya and PT Wings Indonesia Consumer Products.²⁵

The Wings Group was founded by Johannes Ferdinand Katuari.²⁶ His son, Eddy William Katuari is the President Commissioner of PT Gawi Makmur Kalimantan, President Director of PT Wahana Wings Surya, PT Wings Indonesia Consumer Products and PT Wings Group Indonesia.

Identity	Ownership	Position
Haryo Sutanto	11%	President Commissioner
Katuari Teddy Jeffrey	11%	Vice President Commissioner
Yuliana Christina Katuari	11%	Commissioner
Hendri Tanojo	8%	Commissioner
Eddy William Katuari	11%	President Director
Hanny Sutanto	11%	Vice President Director
Finney Henry	11%	Director
Alex Ivan Tanoyo	9%	Director
Djuwita Abadi	6%	-
Handoyo Sutanto	6%	-
John Michael	6%	-

²⁵ Notary Act

²⁶ bit.ly/2CrI0le, bit.ly/2R1gDKo,

Supply Chain Information

Traders:

Supply chain links:	ADM	Cargill	IOI
PT Sentosa Suksesutama			
Wings Group Indonesia	X	X	X

Consumer Brands:

Supply chain links:	Kellogg's	Reckitt Benckiser
PT Sentosa Suksesutama		
Wings Group Indonesia	X	X

Jaya Tiasa Holding Berhad (Rimbunan Hijau Group) LPF/0024

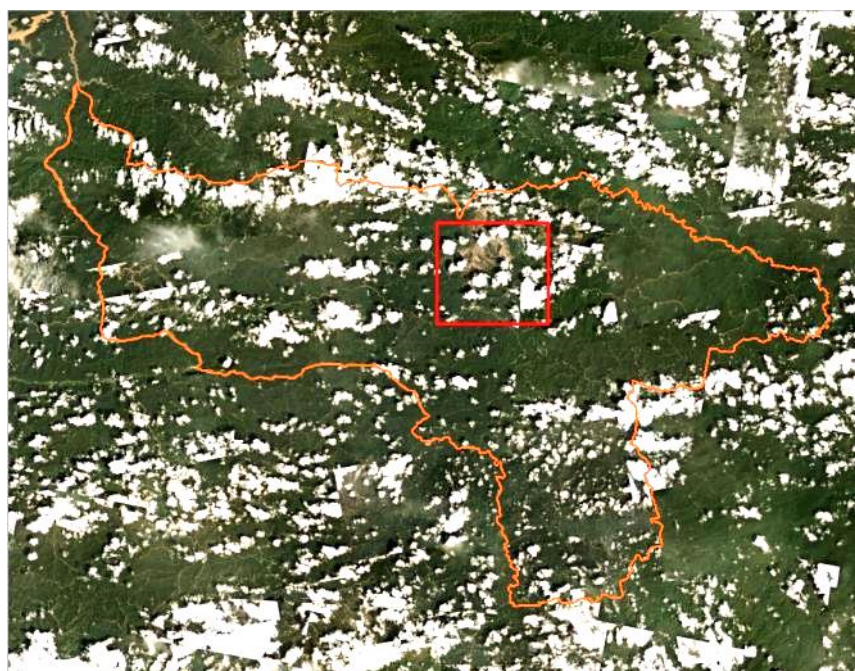


LPF/0024 is located in Belaga Regency, Sarawak. The concession covers an area of 110,220 hectares²⁷.
(Long 114°29'30.22"E, 1°56'58.34"N)

Peat development

Report	Deforestation (ha)	Peat development (ha)	Peat forest clearance (ha)	Clearance prep/ stacking lines (ha)	Time period
Report 12	85	-	-	-	November 3, 2018 – January 11, 2019

Satellite imagery (see below) shows that between November 3, 2018 to January 11, 2019 a total of 85 hectares of forest were cleared in LPF 0024 concession (Imagery © 2019 Planet Labs Inc.)



²⁷ Sarawak Map

Alert Imagery (before and after satellite images)

Date: November 3, 2018

Date: January 11, 2019



Ownership Information

Group: Jaya Tiasa Holdings Bhd, part of the Rimbunan Hijau Group

LPF/0024 was issued to Jaya Tiasa Holdings Berhad, part of the Rimbunan Hijau Group which was founded by the Tiong family. Jaya Tiasa Holdings Berhad is listed on Main Board of Bursa Malaysia Securities Berhad and is involved in palm oil and timber production in Malaysia.²⁸

Tan Sri Abdul Rahman bin Abdul Hamid is an Independent Non-Executive Chairman in Jaya Tiasa Holdings Bhd.²⁹ He previously served as Chief of the Malaysian Army and Defense Force from 1992 to 1994, and also Independent Non-Executive Chairman in Halex (M) Sdn Bhd from January 2015 until December 2017.

Identity	Ownership	Position
Tan Sri Abdul Rahman Bin Abdul Hamid	-	Independent Non-Executive Chairman
Dato' Sri Tiong Chiong Hoo	-	Deputy Executive Chairman
Dato' Wong Sie Young	-	Chief Executive Officer

²⁸ www.jayatiasa.net, Annual Report 2017 - bit.ly/2wqIbkY

²⁹ bloom.bg/2Dhvk8a

Sources:

Planet data from Planet Team (2019). Planet Application Program Interface: In Space for Life on Earth. San Francisco, CA. <https://api.planet.com>. Supply chain information included in this Rapid Response report is based on the following publicly disclosed sources. Mighty Earth encourages companies to send updated versions of mill disclosures as soon as they become available and any decision to terminate supplies with a given company listed in those mill disclosures; please send to rapidresponse@mightyearth.org.

Companies	Source	Link	Date
AAK	Mill disclosure	bit.ly/2RECJ9E	Dec-18
ADM	Mill disclosure	bit.ly/2wuPNlm	Jun-18
Apical	Mill disclosure KRN-Dwiwira Lestari Jaya, Etam Bersama Lestari, Hamparan Perkasa Mandiri, Yudha Wahana Abadi	bit.ly/2stt3Rf	Sep-18
	Mill disclosure MARUNDA- Gawi Bahandep Sawit Mekar	bit.ly/2swhN6E	Sep-18
	Mill disclosure SDS-Hamita Utama Karsa, Pundi Lahan Khatulistiwa, Gawi Bahandep Sawit Mekar	bit.ly/2K1QoS1	Sep-18
Bunge/Bunge Loders Croklaan	Mill disclosure	bit.ly/2FiPn7N	Jan-19
Cargill	Mill disclosure	bit.ly/2La1p49	Jun-18
Ferrero	Mill disclosure	bit.ly/2CTUmvh	Jun-17
Fuji Oil	Mill disclosure	bit.ly/2HwX5hu	Jan-19
GAR	Mill disclosure Tarahan-Buana Tunas Sejahtera	bit.ly/2DjQ2Xi	Sep-18
	Mill disclosure Marunda-Gawi Bahandep Sawit Mekar,Harapan Hibrida Kalbar		
	Mill disclosure Tarjun-Etam Bersama Lestari, Hamparan Perkasa Mandiri, Yudha Wahana Abadi		
General Mills	Mill disclosure	bit.ly/2PH3G8t	
Gokul Agro Resources	Annual report (ANJ)	bit.ly/2ELsZfw	2017
Hershey	Mill disclosure	bit.ly/2PYM3Ez	Jun-18
IOI	Mill disclosure Total IOI Grup Full mill list - Sawai Palm Oil Mill, Igan Palm Oil Mill	bit.ly/2LcN6Mh	Nov-18
	Mill disclosure Oleochemical Prai Full mill list – Sawai Palm Oil Mill, Igan Palm Oil Mill	bit.ly/2RRMw97	Nov-18
Kellogg's	Mill disclosure	bit.ly/2LceKJm	
KLK	Mill disclosure KLK Oleo-Dwiwira Lestari Jaya, Buana Tunas Sejahtera, Etam Bersama Lestari, Hamparan Perkasa Mandiri, Gawi Bahandep Sawit Mekar, Yudha Wahana Abadi	bit.ly/2RwCYEt	Dec-18
Louis Dreyfus	Mill disclosure	bit.ly/2KtmnKX	Nov-18
Mars	Mill disclosure	bit.ly/2VAIbL4	Dec-18
Mondelez	Mill disclosure	bit.ly/2Oh8voJ	Mar-18

Sources (continued):

Planet data from Planet Team (2019). Planet Application Program Interface: In Space for Life on Earth. San Francisco, CA. <https://api.planet.com>. Supply chain information included in this Rapid Response report is based on the following publicly disclosed sources. Mighty Earth encourages companies to send updated versions of mill disclosures as soon as they become available and any decision to terminate supplies with a given company listed in those mill disclosures; please send to rapidresponse@mightyearth.org.

Companies	Source	Link	Date
Musim Mas	Mill disclosure	bit.ly/2O3LbNS	Dec-18
Nestlé	Mill disclosure	bit.ly/2AbVHgh	Feb-18
Olam	Mill disclosure	bit.ly/2OqVsQx	Sep-18
Pacific Inter-Link/HSA	Mill disclosure AAA Oils&Fats-Hamita Utama Karsa, Brahma Binabakti	bit.ly/2Dgv6yp	Dec-18
PepsiCo	Mill disclosure	bit.ly/2TfbQH7 bit.ly/2sfHwjy	2017 (mill) 2018 (supplier)
P&G	Mill disclosure	bit.ly/2OTRgsH	2017
PZ Cussons	Mill disclosure	bit.ly/2EqVklQ	Nov-18
Reckitt Benckiser	Mill disclosure	bit.ly/2LopMyw	2017
Sime Darby	Mill disclosure Unimills-Dwiwira Lestari Jaya, Etam Bersama Lestari, Hamparan Perkasa Mandiri, Yudha Wahana Abadi	bit.ly/2Ctlkav	Jun-18
	Mill disclosure PTGHN – Adisurya Cipta Lestari, Batulicin Agro Senstosa	bit.ly/2UIn1cf	Jun-18
	Mill disclosure H&K – Brahma Binabakti	bit.ly/2EsTMWe	Jun-18
Unilever	Mill disclosure	bit.ly/2pswGp9	2017
Wilmar	Mill disclosure WINA Balikpapan-Dwiwira Lestari Jaya	bit.ly/2HyxMeQ	Sep-18
	Mill disclosure WINA Gresik-Dwiwira Lestari Jaya, Etam Bersama Lestari, irst Lamandau Timber International, Hamparan Perkasa Mandiri, Graha Cakra Mulia, Harapan Hibrida Kalbar, Yudha Wahana Abadi	bit.ly/2DASPJJ	Sep-18
	Mill disclosure WICA Pontianak-Pundi Lahan Khatulistiwa	bit.ly/2G1sVjO	Sep-18
	Mill disclosure MNA Kuala Tanjung-Brahma Binabakti, Gawi Bahandep Sawit Mekar	bit.ly/2Mzz1JI	Sep-18
	Mill disclosure MNA Pulo Gadung-Gawi Bahandep Sawit Mekar	bit.ly/2Sd2VZc	Sep-18
	Mill disclosure WINA Pelintung-Brahma Binabakti	bit.ly/2DBEnRT	Sep-18