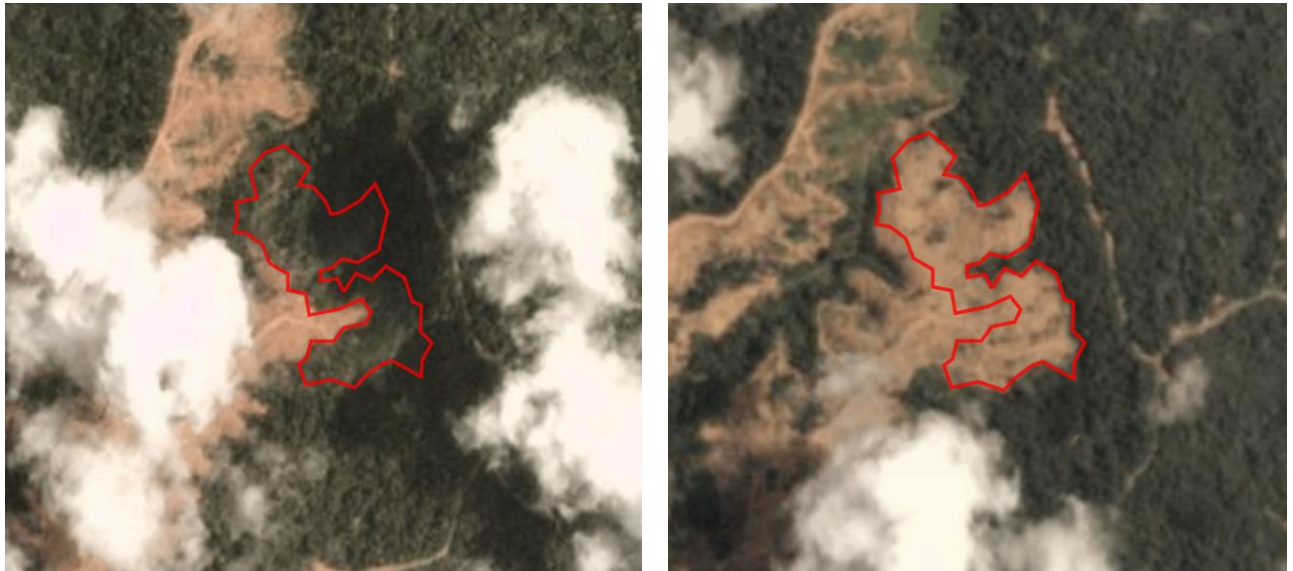


# Rapid Response

## Palm Oil, Report 20



**October 2019**

Prepared with support from MapHubs

## Table of Contents

### Cases identified using Planet imagery

#### Indonesian Companies

Dharma Satya Nusantara: PT Putra Utama Lestari (area 1)	5
Dharma Satya Nusantara: PT Putra Utama Lestari (area 2)	8
GAMA Group: PT Agrinusa Persada Mulia	11
STH Group: PT Makmur Bersama Asia	14
Felda Global Ventures: PT Citra Niaga Perkasa	17
Surya Dumai: PT Kalimantan Agro Kencana	20
Salim Group: PT Agro Subur Permai	23
Mulia Sawit: PT Persada Era Agro Kencana	28

#### Malaysian Companies

Shin Yang: Dataran Seping Sdn Bhd (Adam Oil Palm Estate)	34
--	----

### Additional cases identified using filtered GLAD alerts

#### New Cases

Shanghai Xinjiu Chemical Co Ltd: PT Sebaung Sawit Plantation	
Unknown Group: PT Citrapermata Serunding	37
Unknown Group: PT Lestari Subur Indonesia	37
Pipit Group: PT Nunukan Bara Sukses	37
Green Yield Pte Ltd: PT Tri Investama	37
PT Shield of Service TBK: PT Perwita Citra Nusantara	37
Mitra Jaya Group: PT Mitra Sawit Makmur	37
Unknown Group: Koperasi Berkat Mumpa Bersatu	37
Unknown Group: Permodalan ASSAR Sdn Bhd	37
Kwantas Corporation: Miracle Harvest Sdn Bhd	37

#### Repeat Cases

PT Bakrie Sumatra Plantations Tbk : PT Mentobi Mitra Lestari	38
Mulia Sawit Group: PT Persada Era Agro Kencana	38
Indonusa Group: PT Internusa Jaya Sejahtera	38
PT Sawit Sumbermas Sarana Tbk: PT Sawit Mandiri Lestari	38
Unknown Group: PT Gapura Alas Lestari	38

### Sources for supply chain information:

Supply chain information included in Rapid Response reports is based on the latest public versions of mill disclosures, recent export data and grievance logs. Mighty Earth encourages companies to send updated versions of mill disclosures as soon as they become available and to share any decision to suspend relations with a given group/company listed in those mill disclosures; please send to [rapidresponse@mightyearth.org](mailto:rapidresponse@mightyearth.org).

## Table of Contents (cont.)

### Additional Cases Identified Using Filtered GLAD Alerts

#### Repeat Cases (continued)

Genting Group: PT Permata Sawit Mandiri	38
Widya Corporation: PT Mulia Inti Perkasa	38
Evershine Asset Corporation and Everbright Resources Corporation: PT Kapuasindo Palm Industri	38
Unknown Group: PT Kayan Plantation	38
Salim/IndoGunta: PT Rimbun Sawit Papua	38
Unknown Group: PT Ichiko Agro Lestari	38
RGE Group: PT Usaha Sawit Unggul	38
Wings Group: PT Indopenta Sejahtera Abadi	38
JSK International Co Ltd (Korea): PT Future Agropia Indonesia	38
Wings Group: PT Sentosa Suksesutama	39
Shanghai Xinjui Checmical Co Ltd: PT Sebaung Sawit Plantation	39
Anglo-Eastern Plantations: PT Kahayan Agro Plantation	39
Samuel International Group: PT Bina Sarana Sawit Utama	39
Unknown Group: Koperasi Usaha Mandiri	39
Unknown: PT Pipit Citra Persada	39
Henan Jiujiu Chemical Co. Ltd: PT Palembang Segar Lestari	39
CB Industrial Product Holding: PT Jaya Jadi Utama	39
Triputra Agro Persada Group: PT Berau Karetindo Lestari	39
Puncak Niaga: Danum Jaya Sdn Bhd	39
Samling: Samling Reforestation (Bintulu) Sdn Bhd: LPF/0008 Marudi estate	39
Samling: LPF/0006 Samling Lana	39
Double Dynasty: Mutiara Pelita Genaan Plantation Sdn Bhd	39
Samling: LPF/0007 Samling Jelalong (OP)	39
Shin Yang: Dataran Linau OP (SY) (Lot 1 Block 14 Murum LD)	39
TH Plantations Bhd: Ladang Tabung Haji	39
Unknown Group: Formerly Ekran Bhd	40
Rimbunan Hijau: Poh Zhen Sdn Bhd	40
Shin Yang: Shin Yang (LPF 0018)	40
Shin Yang: Linau Sinar Sdn Bhd	40
Kwantas: Kwantas Pelita Plantation (Balingian) Sdn Bhd	40
Double Dynasty: Hua Seng Plantation Sdn Bhd	40
Samling: Samling Jelalong LPF 0007 (part 3)	40
Samling: Syarikat Samling Timber Sdn Bhd (LPF 0014)	40
Pelita Holdings Sdn Bhd: Pelita Holdings Sdn Bhd (LCDA-OT/9137)	40
Samling: LPF/0007 Jelalong OP (Glenealy) Part 1	40

## Table of Contents (cont.)

### Additional Cases Identified Using Filtered GLAD Alerts

#### Repeat Cases (continued)

Unknown Group: Telliana Enterprise Sdn Bhd	40
Unknown Group: Selangor Oil Palm Industries Corporation Sdn Bhd	40

*The work of Mighty Earth is supported by Waxman Strategies. Waxman Strategies' work on forest conservation is funded in part by Aidenvironment and the National Wildlife Federation. Waxman is required under 22 U.S.C. § 614 to disclose that this material is distributed on behalf of the aforementioned organization, working under grant from the Norwegian Agency for Development Cooperation. Additional information is on file with the Department of Justice, Washington, D.C.*

# Group: Dharma Satya Nusantara

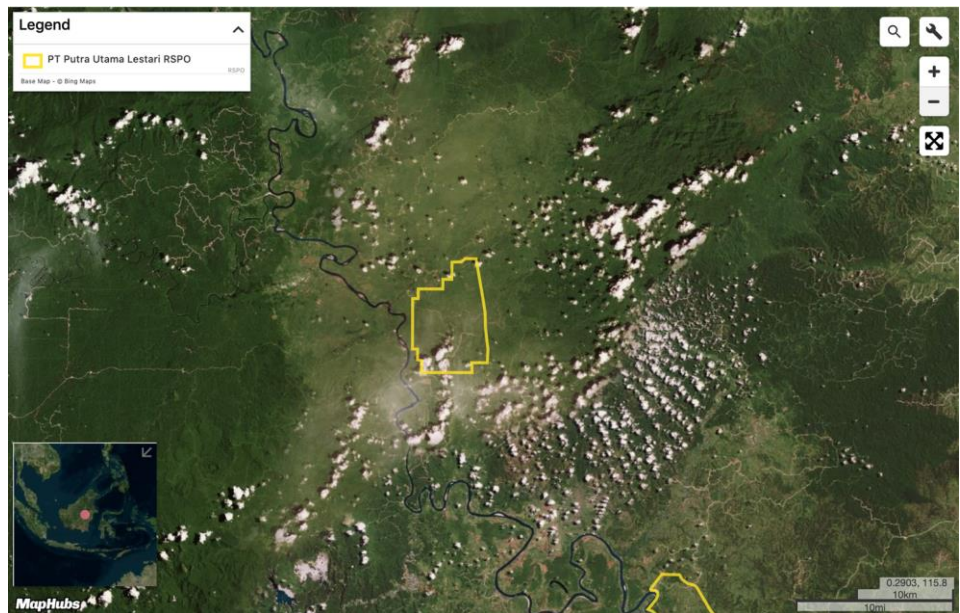
## PT Putra Utama Lestari (area 1)

Concession location: (-0.081, 115.766)

### Deforestation and/or peat development

Report	Deforestation (ha)	Peat development (ha)	Peat forest development (ha)	Clearance prep/Stacking lines (ha)	Time period
Report 20	19	-	-	-	May 20, 2019 - Sept 24, 2019

Satellite imagery (see below) shows that between May 20, 2019 and September 24, 2019 a total of 19 hectares of forest were cleared in the PT Putra Utama Lestari concession (area 1, northern concession). (Imagery © 2019 Planet Labs Inc.)





## Alert Imagery (before and after satellite images)

Clearance location: (0.199, 115.566)

Date: May 20, 2019

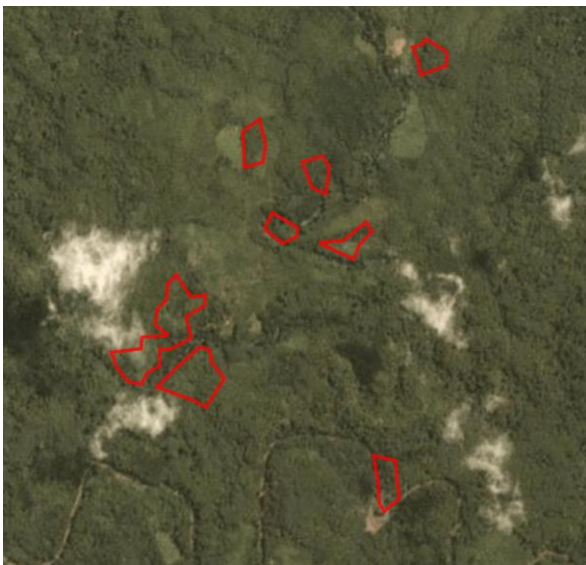


Date: September 24, 2019



Clearance location: (0.223, 115.576)

Date: May 20, 2019



Date: September 24, 2019



## Ownership Information

PT Putra Utama Lestari is part of Dharma Satya Nusantara (DSN) Group.<sup>1</sup>

1. Dharma Satya Nusantara 2018 annual report, [www.dsn.co.id/uploads/AR%20DSNG%202018%20OK.pdf](http://www.dsn.co.id/uploads/AR%20DSNG%202018%20OK.pdf)

## Supply Chain Information

Supply Chain Links: Traders	AAK	ADM	Apical	Bunge	Cargill	Fuji Oil	GAR	KLK	Wilmar
PT Putra Utama Lestari									
<b>DSN Group</b>	x	x	x	x	x	x	x	x	x

Supply Chain Links: Consumer Brands	Avon	Colgate-Palmolive	Ferrero	FrieslandCampina	General Mills	Hershey
PT Putra Utama Lestari						
<b>DSN Group</b>	x	x	x	x	x	x

Supply Chain Links: Consumer Brands	Johnson & Johnson	Kellogg's	Mars	Mondelez	Neste Oil	Nestle	P&G	PepsiCo	PZ Cussons
PT Putra Utama Lestari									
<b>DSN Group</b>	x	x	x	x	x	x	x	x	x

Supply Chain Links: Consumer Brands	Reckitt Benckiser	Unilever
PT Putra Utama Lestari		
<b>DSN Group</b>	x	x

# Group: Dharma Satya Nusantara

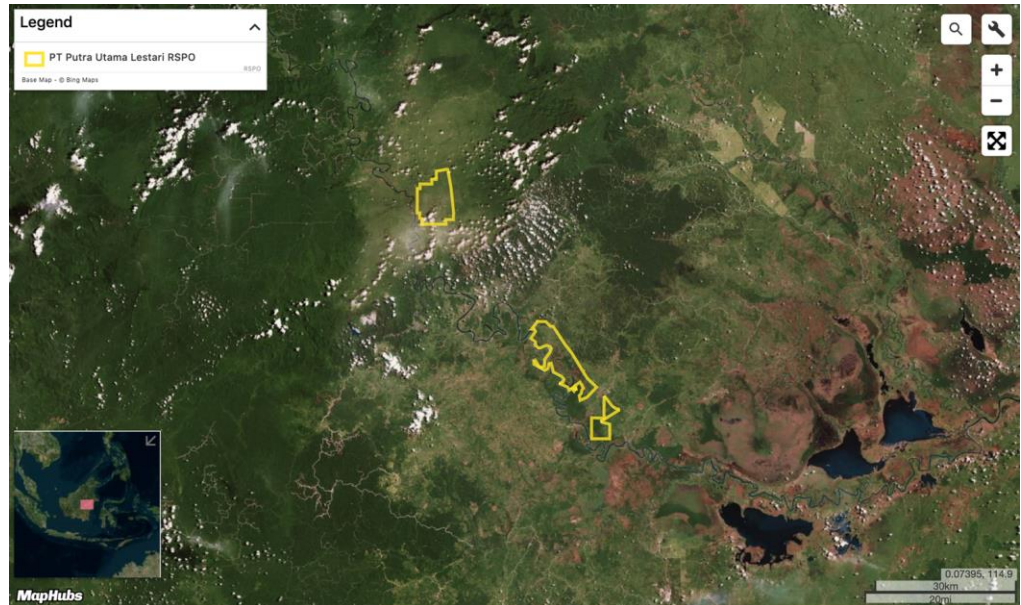
## PT Putra Utama Lestari (area 2)

Concession location: (-0.081, 115.766)

### Deforestation and/or peat development

Report	Deforestation (ha)	Peat development (ha)	Peat forest development (ha)	Clearance prep/Stacking lines (ha)	Time period
Report 20	2	-	-	-	May 7, 2019 - September 11, 2019

Satellite imagery (see below) shows that between May 7, 2019 and September 11, 2019 a total of 2 hectares of forest were cleared in the PT Putra Utama Lestari concession (area 2, middle concession). (Imagery © 2019 Planet Labs Inc.).





## Alert Imagery (before and after satellite images)

Clearance location: (-0.075, 115.766)

Date: May 7, 2019

Date: September 11, 2019



## Ownership Information

PT Putra Utama Lestari is part of Dharma Satya Nusantara (DSN) Group.<sup>2</sup>

2. Dharma Satya Nusantara 2018 annual report, [www.dsn.co.id/uploads/AR%20DSNG%202018%20OK.pdf](http://www.dsn.co.id/uploads/AR%20DSNG%202018%20OK.pdf)

## Supply Chain Information

Supply Chain Links: Traders	AAK	ADM	Apical	Bunge	Cargill	Fuji Oil	GAR	KLK	Wilmar
PT Putra Utama Lestari									
<b>DSN Group</b>	x	x	x	x	x	x	x	x	x

Supply Chain Links: Consumer Brands	Avon	Colgate-Palmolive	Ferrero	FrieslandCampina	General Mills	Hershey
PT Putra Utama Lestari						
<b>DSN Group</b>	x	x	x	x	x	x

Supply Chain Links: Consumer Brands	Johnson & Johnson	Kellogg's	Mars	Mondelez	Neste Oil	Nestle	P&G	PepsiCo	PZ Cussons
PT Putra Utama Lestari									
<b>DSN Group</b>	x	x	x	x	x	x	x	x	x

Supply Chain Links: Consumer Brands	Reckitt Benckiser	Unilever
PT Putra Utama Lestari		
<b>DSN Group</b>	x	x

## Group: GAMA

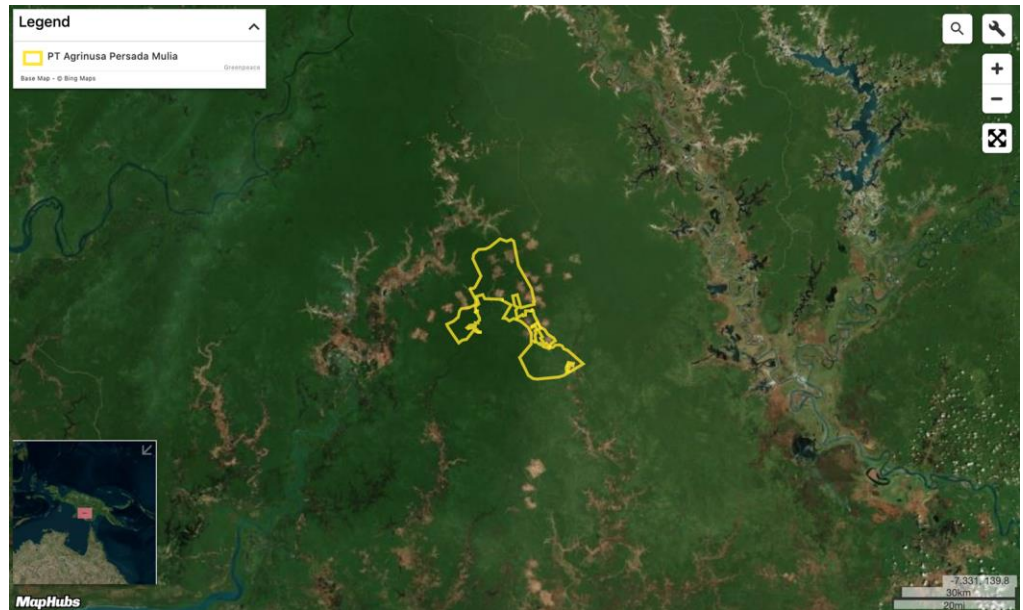
### PT Agrinusa Persada Mulia

Concession location: (-7.439, 140.693)

#### Deforestation and/or peat development

Report	Deforestation (ha)	Peat development (ha)	Peat forest development (ha)	Clearance prep/Stacking lines (ha)	Time period
Report 3	2,361	-	-	-	May 2017 – Nov 2017
Report 20	8	-	-	-	April 19, 2019 - September 1, 2019

Satellite imagery (see below) shows that between April 19, 2019 and September 1, 2019 a total of 8 hectares of forest were cleared in the PT Agrinusa Persada Mulia concession. (Imagery © 2019 Planet Labs Inc.)



## Alert Imagery (before and after satellite images)

Clearance location: (-7.387, 140.644)

Date: April 19, 2019



Date: September 1, 2019



Clearance location: (-7.4, 140.65)

Date: April 19, 2019



Date: September 1, 2019



## Ownership Information

PT Agrinusa Persada Mulia is part of the GAMA Group.<sup>4</sup>

4. GAMA Group press release, <http://gamaplantation.com/assets/gama-files/pressrelease/310818-gama-papua-entities.pdf>

## Supply Chain Information

Supply Chain Links: Traders	Bunge	Louis Dreyfus	Sime Darby	Wilmar
PT Agrinusa Persada Mulia				
<b>GAMA Group</b>	<b>x</b>	<b>X</b>	<b>X</b>	<b>x</b>

Supply Chain Links: Consumer Brands	General Mills	Kellogg's	Mars	PepsiCo
PT Agrinusa Persada Mulia				
<b>GAMA Group</b>	<b>x</b>	<b>x</b>	<b>x</b>	<b>x</b>



## Group: STH

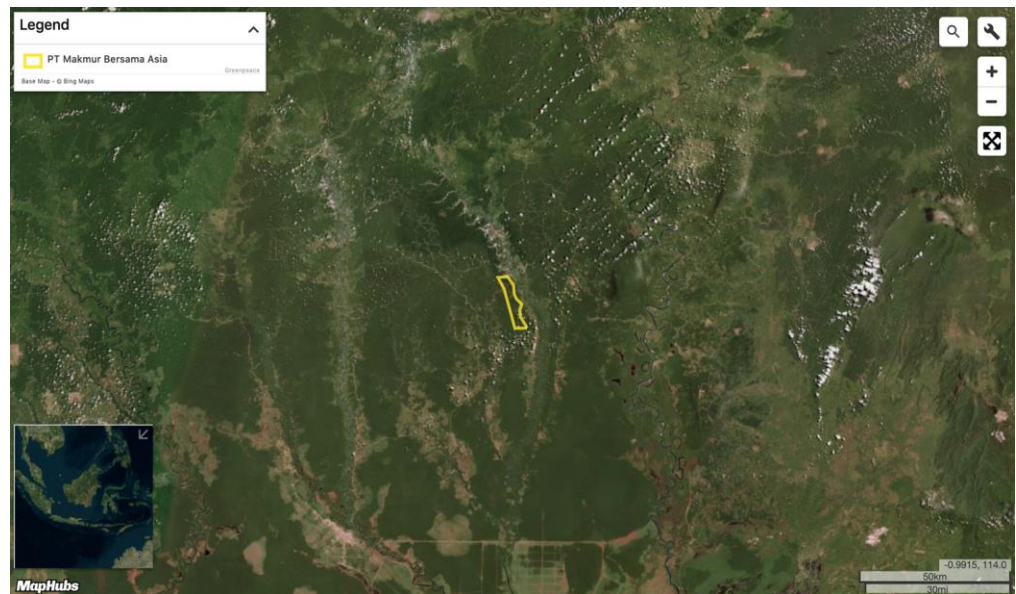
### PT Makmur Bersama Asia

Concession location: (-1.566, 114.429)

#### Deforestation and/or peat development

Report	Deforestation (ha)	Peat development (ha)	Peat forest development (ha)	Clearance prep/Stacking lines (ha)	Time period
Report 20	2	-	-	-	Feb 20, 2019 - Aug 30, 2019

Satellite imagery (see below) shows that between February 20, 2019 and August 30, 2019 a total of 2 hectares of forest were cleared in the PT Makmur Bersama Asia concession. (Imagery © 2019 Planet Labs Inc.)



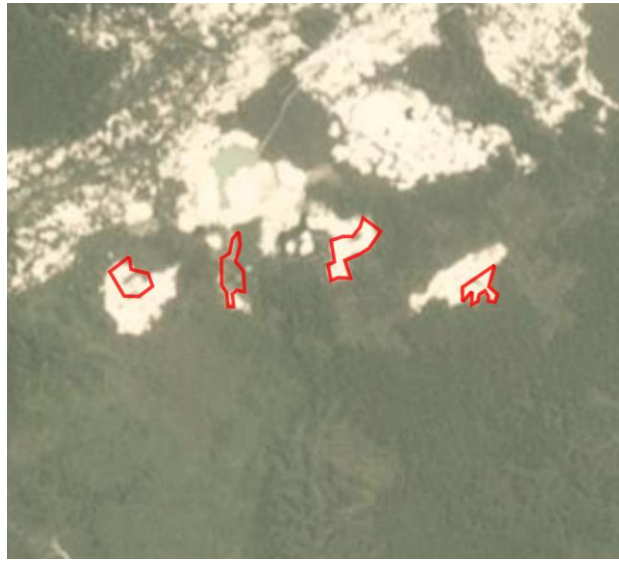
## Alert Imagery (before and after satellite images)

Clearance location: (-1.533, 114.409)

Date: February 20, 2019



Date: August 30, 2019



## Ownership Information

PT Makmur Bersama Asia is part of the Sin Tek Huat (STH) Group, which is controlled by Rusmin Wijaya. The Group is engaged in palm oil and coal mining.<sup>5</sup>

---

5. Notary Acts for PT Makmur Bersama Asia and holding companies; [www.sthgroup.com/palm/](http://www.sthgroup.com/palm/)

## Supply Chain Information

Supply Chain Links: Traders	AAK	ADM	Apical	Cargill	Fuji Oil	KLK	Louis Dreyfus	Pacific Inter-Link	Sime Darby	Wilmar
PT Makmur Bersama Asia										
<b>STH Group</b>	<b>x</b>	<b>x</b>	<b>x</b>	<b>x</b>	<b>x</b>	<b>x</b>	<b>x</b>	<b>x</b>	<b>x</b>	<b>x</b>

Supply Chain Links: Consumer Brands	Avon	Colgate-Palmolive	FrieslandCampina	General Mills	Hershey	Johnson & Johnson
PT Makmur Bersama Asia						
<b>STH Group</b>	<b>x</b>	<b>x</b>	<b>x</b>	<b>x</b>	<b>x</b>	<b>x</b>

Supply Chain Links: Consumer Brands	Kellogg's	Mars	Mondelez	Nestle	P&G	PepsiCo	Reckitt Benckiser	Unilever
PT Makmur Bersama Asia								
<b>STH Group</b>	<b>x</b>	<b>x</b>	<b>x</b>	<b>x</b>	<b>x</b>	<b>x</b>	<b>x</b>	<b>x</b>

## Group: Felda Global Ventures

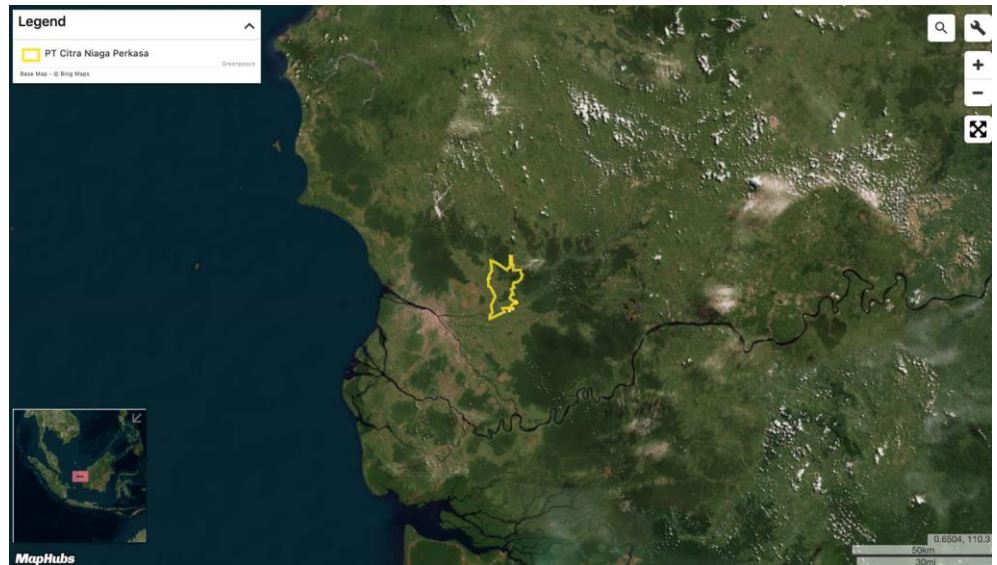
### PT Citra Niaga Perkasa

Concession location: (0.05, 109.551)

#### Deforestation and/or peat development

Report	Deforestation (ha)	Peat development (ha)	Peat forest development (ha)	Clearance prep/Stacking lines (ha)	Time period
Report 20	4	-	-		May 22 2019 - Aug 21 2019

Satellite imagery (see below) shows that between May 22, 2019 and August 21, 2019 a total of 4 hectares of forest were cleared in the PT Citra Niaga Perkasa concession. (Imagery © 2019 Planet Labs Inc.)



## Alert Imagery (before and after satellite images)

Clearance location: (0.052, 109.533)

Date: May 22, 2019



Date: August 21, 2019



## Ownership Information

PT Citra Niaga Perkasa is part of Felda Global Ventures (FGV) Group.<sup>6</sup>

---

6. Felda Global Ventures 2018 annual report,  
[www.insage.com.my/ir/cmn/downloading.aspx?sFileName=19119000031702&sReportType=AR&sCompanyCode=FGV](http://www.insage.com.my/ir/cmn/downloading.aspx?sFileName=19119000031702&sReportType=AR&sCompanyCode=FGV)



## Supply Chain Information

Supply Chain Links: Traders	AAK	ADM	Cargill	Felda IFFCO	Fuji Oil	KLK	Louis Dreyfus	Mewah	Musim Mas
PT Citra Niaga Perkasa									
<b>Felda Global Ventures</b>	x	x	x	x	x	x	x	x	x

Supply Chain Links: Traders	Olam	Pacific Inter-Link	Sime Darby
PT Citra Niaga Perkasa			
<b>Felda Global Ventures</b>	x	x	x

Supply Chain Links: Consumer Brands	Avon	Colgate-Palmolive	FrieslandCampina	General Mills	Hershey	ISF	Johnson & Johnson
PT Citra Niaga Perkasa							
<b>Felda Global Ventures</b>	x	x	x	x	x	x	x

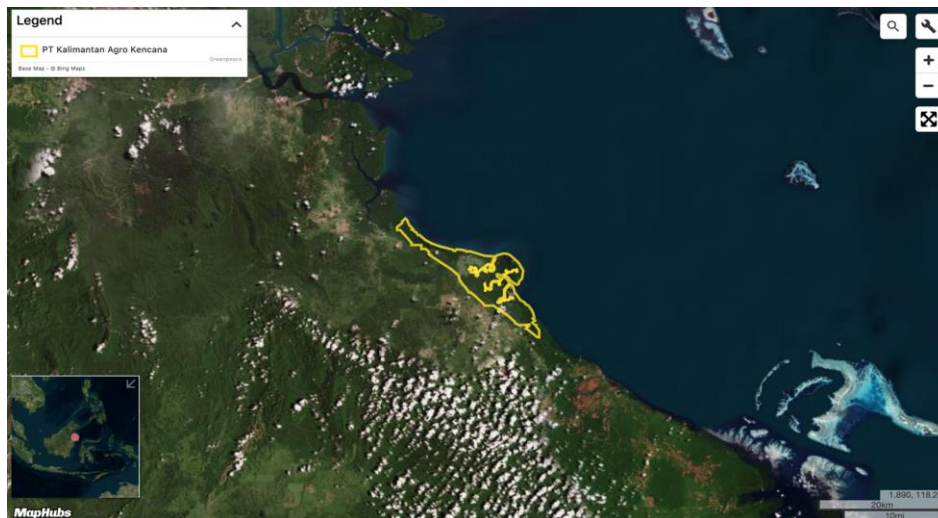
Supply Chain Links: Consumer Brands	Kellogg's	Mars	Mondelez	Neste Oil	Nestle	P&G	PepsiCo	Reckitt Benckiser	Unilever
PT Citra Niaga Perkasa									
<b>Felda Global Ventures</b>	x	x	x	x	x	x	x	x	x

**Group: Surya Dumai**  
**PT Kalimantan Agro Kencana**  
 Concession location: (1.751, 118.018)

**Deforestation and/or peat development**

Report	Deforestation (ha)	Peat development (ha)	Peat forest development (ha)	Clearance prep/Stacking lines (ha)	Time period
Report 20	-	-	-	266	April 8, 2019 - September 11, 2019

Satellite imagery (see below) shows that between April 8, 2019 and September 11, 2019 a total of 266 hectares were prepared for clearing (stacking lines) in the PT Kalimantan Agro Kencana concession. (Imagery © 2019 Planet Labs Inc.)



## Alert Imagery (before and after satellite images)

Clearance location: (1.754, 118.012)

Date: April 8, 2019

Date: September 7, 2019



## Ownership Information

PT Kalimantan Agro Kencana is part of the Surya Dumai Group:

PT Kalimantan Agro Kencana is 50% owned by PT Surya Dumai Investama and 50% by PT Bangka Bumi Lestari, which are both majority-owned by Mr Sulaidy.<sup>7</sup>

PT Surya Dumai Investama is registered at the Jakarta office of First Resources,<sup>8</sup> which is a spin-off of the Surya Dumai Group.

Mill lists published by AAK, Cargill, KLK, Louis Dreyfus and Olam all list First Resources' companies as part of the Surya Dumai Group.

---

7. Notary Acts for PT Kalimantan Agro Kencana and PT Surya Dumai Investama.

8. PT Surya Dumai Investama: 28-29<sup>th</sup> Floor, APL Tower, Jl. Letjend S.Parman Kav.28, Jakarta Barat 11470 (source: Notary Act for PT Surya Dumai Investama); First Resources: 28<sup>th</sup> Floor, APL Tower, Jl. Letjend S.Parman Kav.28, Jakarta Barat 11470 (source: [www.first-resources.com/contact.php](http://www.first-resources.com/contact.php))

## Supply Chain Information

Supply Chain Links: Traders	ADM	Bunge	Cargill	KLK	Louis Dreyfus	Olam
PT Kalimantan Agro Kencana						
<b>Surya Dumai Group</b>	x	x	x	x	x	x

Supply Chain Links: Consumer Brands	Avon	Colgate-Palmolive	FrieslandCampina	General Mills	Johnson & Johnson	Kellogg's
PT Kalimantan Agro Kencana						
<b>Surya Dumai Group</b>	x	x	x	x	x	x

Supply Chain Links: Consumer Brands	Nestle	P&G	PepsiCo	Unilever
PT Kalimantan Agro Kencana				
<b>Surya Dumai Group</b>	x	x	x	x

## Group: Salim

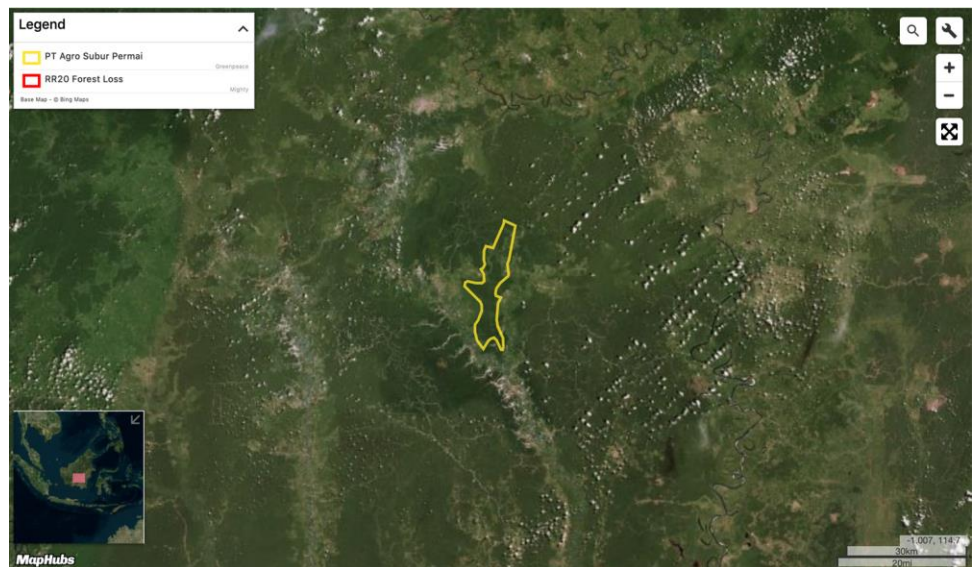
### PT Agro Subur Permai

Concession location: (-1.126,114.321)

#### Deforestation and/or peat development

Report	Deforestation (ha)	Peat development (ha)	Peat forest development (ha)	Clearance prep/Stacking lines (ha)	Time period
Report 20	105	-	-	-	Feb 20, 2019 - Aug 29, 2019

Satellite imagery (see below) shows that between February 20, 2019 and August 29, 2019 a total of 105 hectares of forest were cleared in the PT Agro Subur Permai concession. (Imagery © 2019 Planet Labs Inc.)





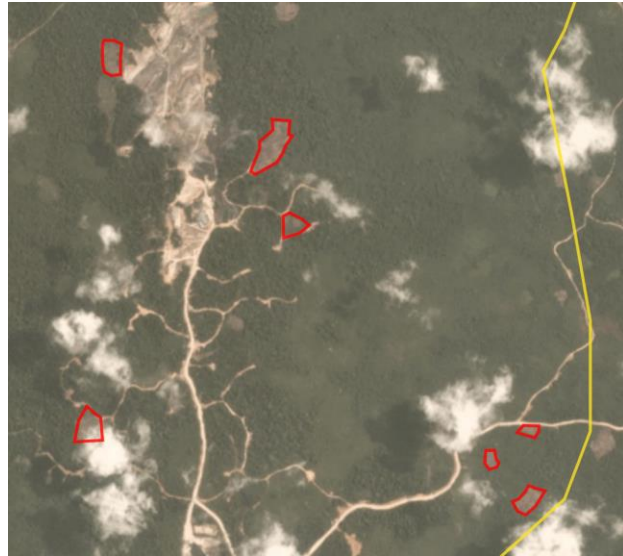
**Alert Imagery (before and after satellite images)**

Clearance location: (-1.083 ,114.336)

Date: February 20, 2019

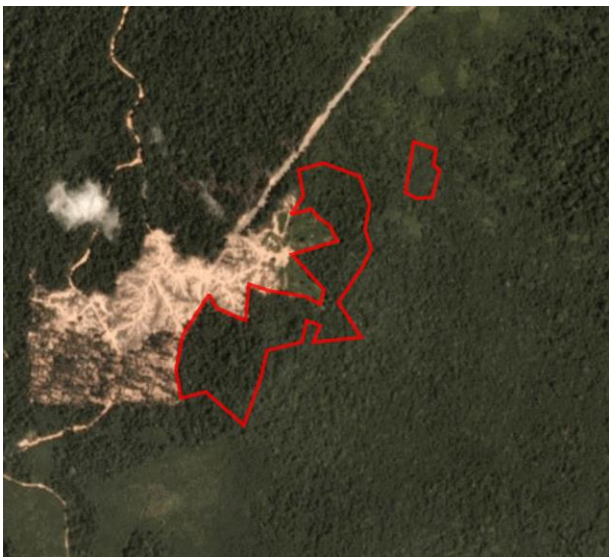


Date: August 29, 2019



Clearance location: (-1.032, 114.346)

Date: February 20, 2019



Date: August 29, 2019

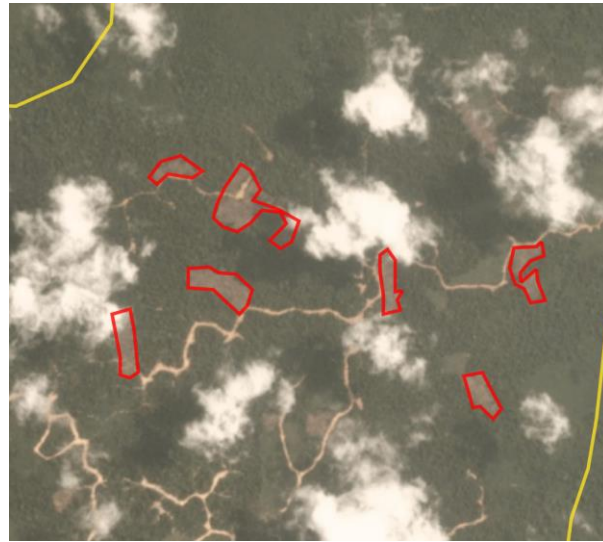
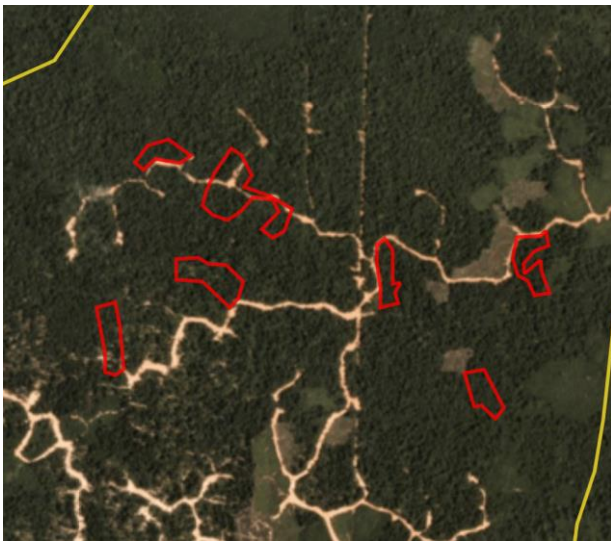


**Alert Imagery (before and after satellite images)**

Clearance location: (-1.129 ,114.318)

Date: February 20, 2019

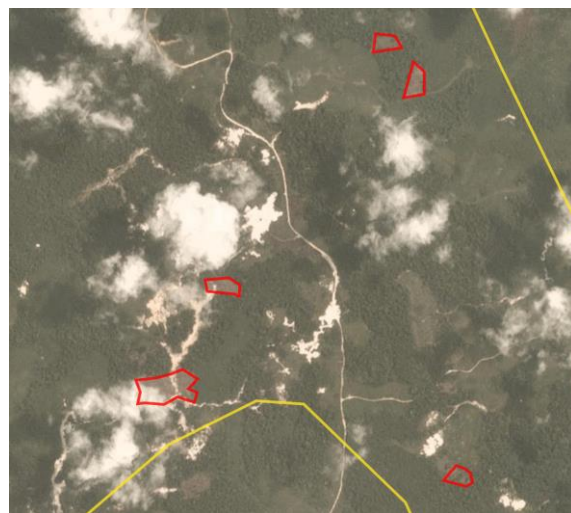
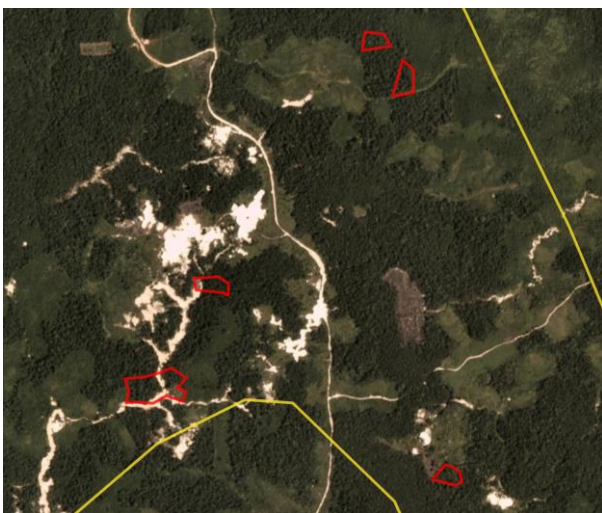
Date: August 29, 2019



Clearance location: (-1.232, 114.32)

Date: February 20, 2019

Date: August 29, 2019



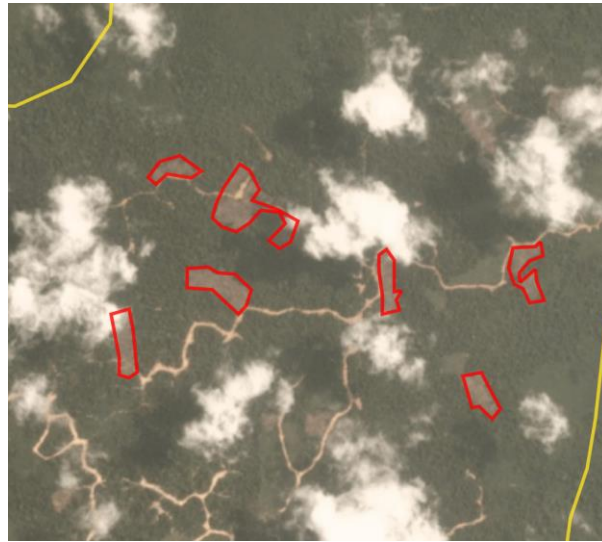
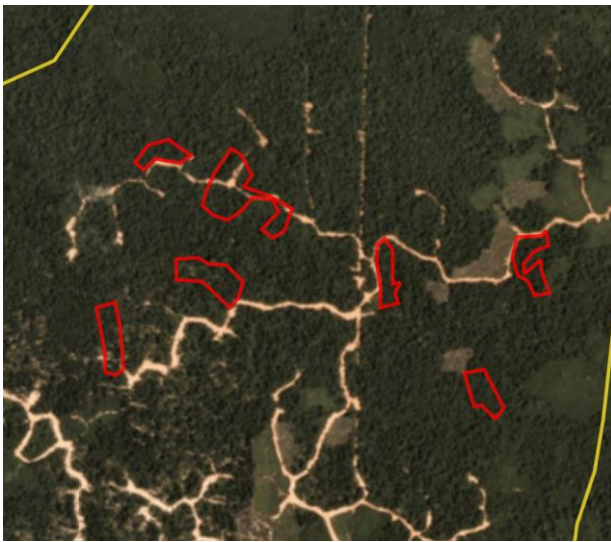


## Alert Imagery (before and after satellite images)

Clearance location: (-1.181 ,114.321)

Date: February 20, 2019

Date: August 29, 2019



## Ownership Information

PT Agro Subur Permai is part of Indofood,<sup>9</sup> which is part of the Salim Group.<sup>10</sup>

9. Indofood 2018 annual report, [www.indofood.com/investor-relation/annual-report/11](http://www.indofood.com/investor-relation/annual-report/11)

10. e.g. [www.forbes.com/profile/anthoni-salim/#3d82e2ef29be](http://www.forbes.com/profile/anthoni-salim/#3d82e2ef29be)

## Supply Chain Information

Supply Chain Links: Traders	AAK	Louis Dreyfus
PT Agro Subur Permai		
<b>Salim Group</b>	<b>x</b>	<b>x</b>

Supply Chain Links: Consumer Brands	Avon	Ferrero	General Mills	Hershey	Johnson & Johnson	Kellogg's	Mondelez	Nestle
PT Agro Subur Permai								
<b>Salim Group</b>	<b>x</b>	<b>x</b>	<b>x</b>	<b>x</b>	<b>x</b>	<b>x</b>	<b>x</b>	<b>x</b>

Supply Chain Links: Consumer Brands	P&G	PepsiCo	Unilever
PT Agro Subur Permai			
<b>Salim Group</b>	<b>x</b>	<b>x</b>	<b>x</b>

## Group: Mulia Sawit

PT Persada Era Agro Kencana

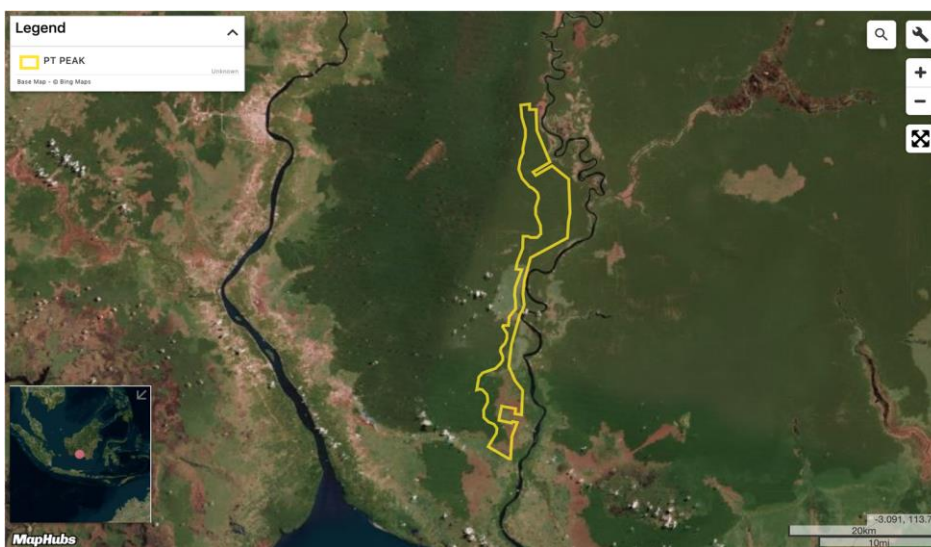
Concession location: (-2.748, 113.266)

### Deforestation and/or peat development

Report	Deforestation (ha)	Peat development (ha)	Peat forest development (ha)	Clearance prep/Stacking lines (ha)	Time period
Report 9	-	-	129	-	Aug 27 – Sept 25, 2018
Report 10	-	383	-	-	Aug 27 – Oct 31, 2018
Report 11	-	200	189	-	Sept 25 – Dec 1, 2018 and Oct 31 – Dec 5, 2018
Report 12	-	-	189	-	Dec 5, 2018 – Jan 7, 2019
Report 15	-	419	144	188	March 19 – May 4, 2019
Reports 16 -19	Filtered GLAD alerts only				April 19 – Aug 15, 2019
Report 20	-	1,958	158	875	June 27, 2019 - Sept 6, 2019

Satellite imagery (see below) shows that between June 27, 2019 and September 6, 2019 a total of 1,958 hectares of peat and 67 hectares of peat forest were developed, as well as 875 hectares were prepared for clearing (stacking lines) in the PT Persada Era Agro Kencana concession. (Imagery © 2019 Planet Labs Inc.)

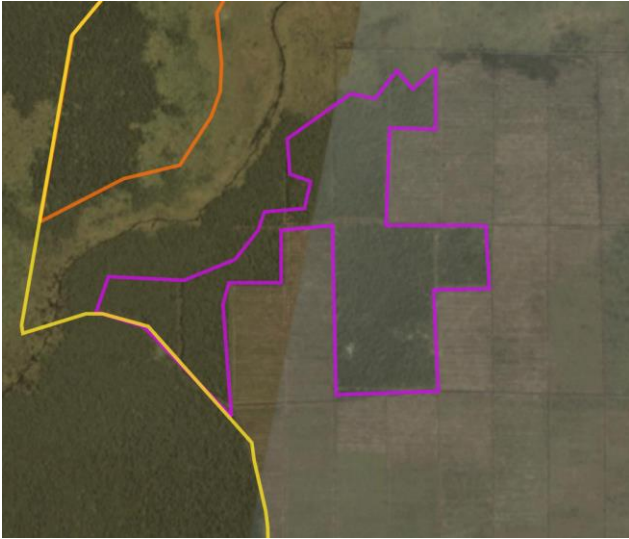
Further peatland development has taken place since September 6, 2019 and peatland fires can be observed with the concession without coincides with the period of land clearing. See additional Planet/fire spot imagery below.



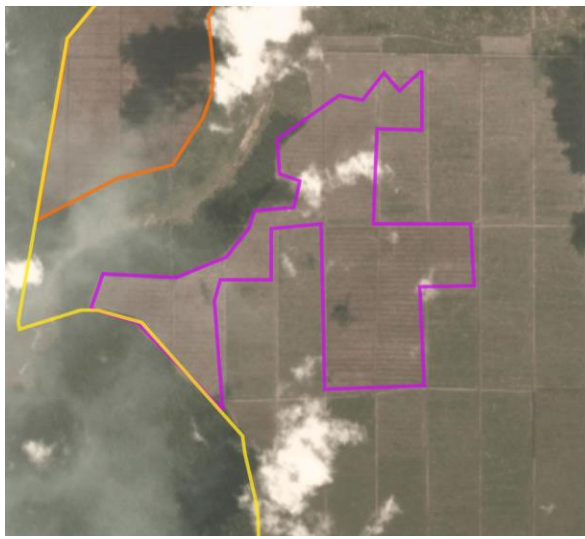
**Alert Imagery (before and after satellite images)**

Clearance location: (-2.867, 113.229)

Date: January 27, 2019

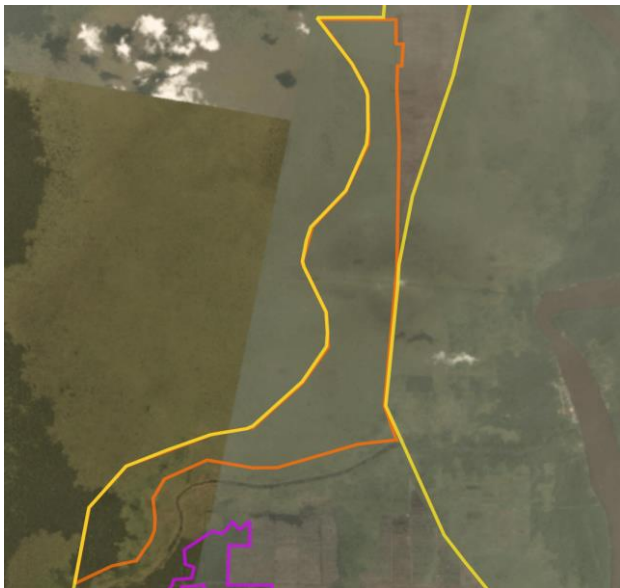


Date: September 6, 2019

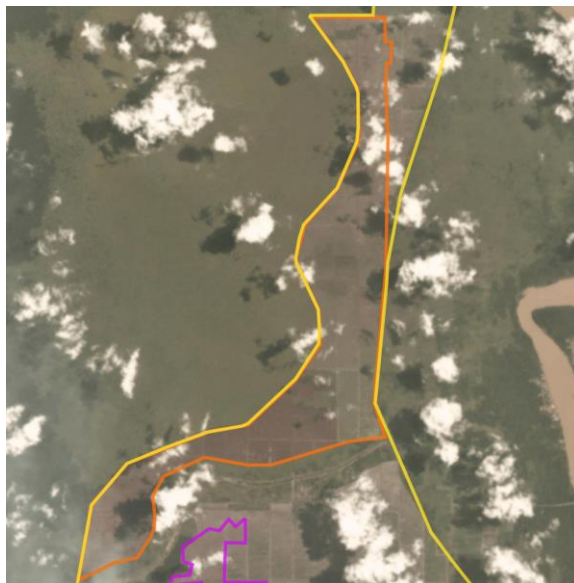


Clearance location: (-2.832, 113.241)

Date: January 27, 2019



Date: September 6, 2019

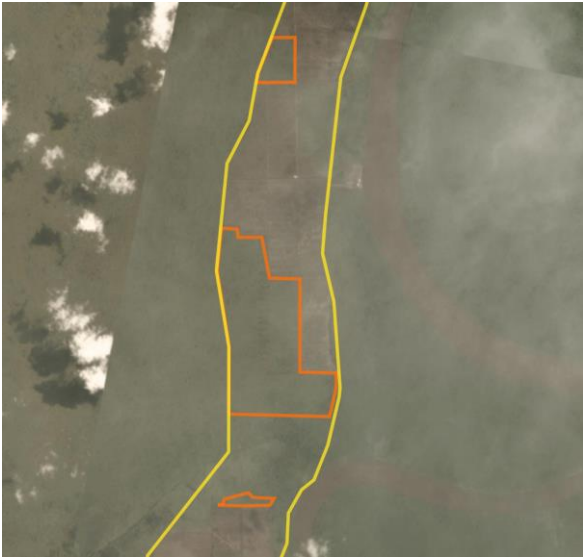




**Alert Imagery (before and after satellite images)**

Clearance location: (-2.737, 113.264)

Date: January 27, 2019

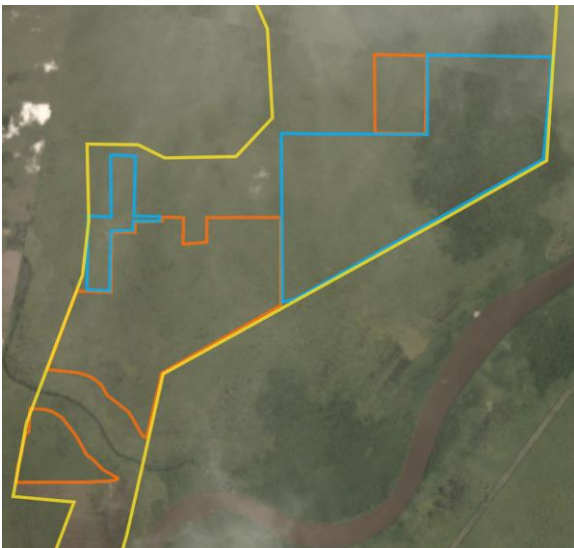


Date: September 6, 2019

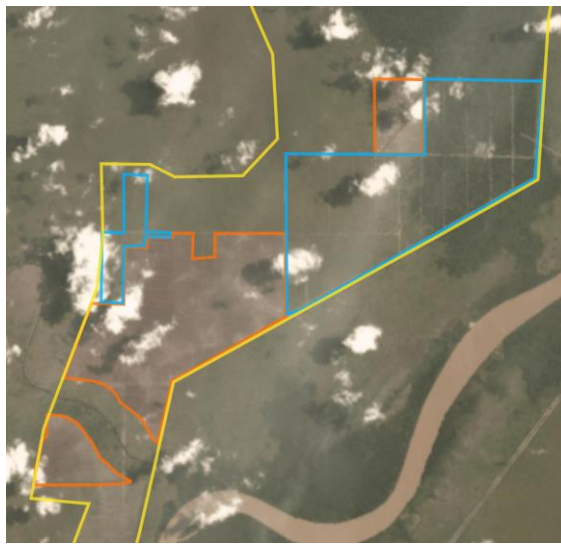


Clearance location: (-2.704, 113.275)

Date: January 27, 2019



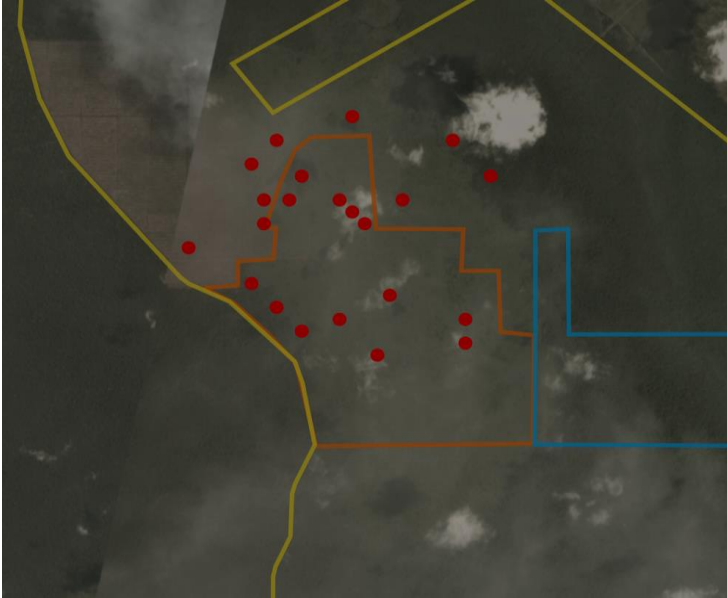
Date: September 6, 2019



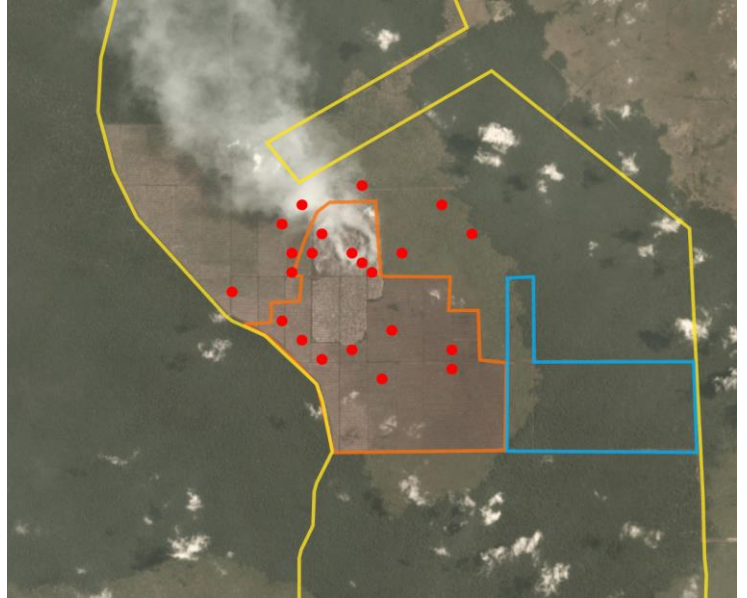
## Fire Hotspot data (before and after satellite images)

Coordinates: (-2.618, 113.289)

Date: January 27, 2019



Date: September 6, 2019



Zoom of Planet image showing smoke from burning peatland

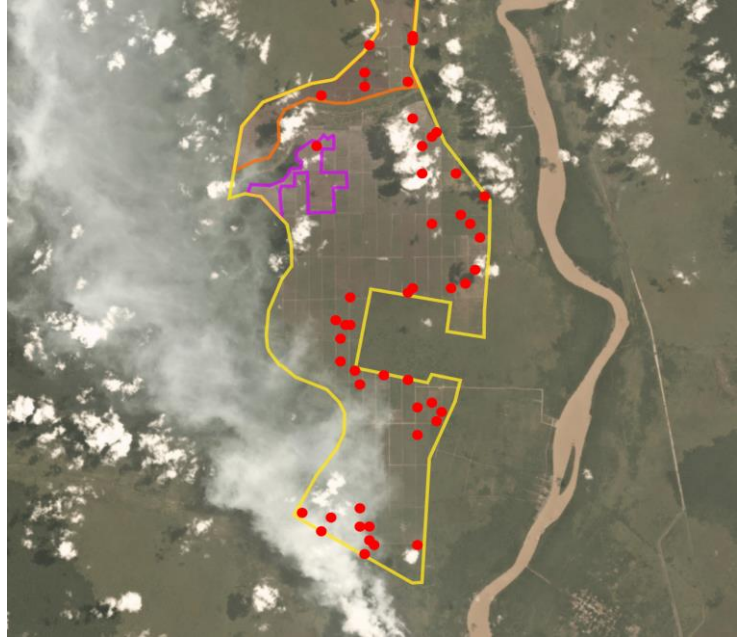


Coordinates: (-2.878, 113.256)

Date: January 27, 2019



Date: September 6, 2019



## Ownership Information

PT Persada Era Agro Kencana is part of PT Mulia Sawit Agro Lestari (Mulia Sawit Group),<sup>11</sup> which is owned by Kurnia Lukman Goutama, Tjio Andre Yenatha, Kevin Wusman and Sanjaya Lukman. Tjio Andra Yenatha, known as Andre, also serves as a Director of PT Bangun Jaya Alam Permai of the Best Plantation Group. See Rapid Response reports 9-12 and 15-19 for further history on this case).

11. MSAL website, see <http://bit.ly/2MdtwQW>; Notary Act for PT Persada Era Agro Kencana.

## Supply Chain Information

Supply Chain Links: Traders	Felda IFFCO	Fuji Oil
PT Persada Era Agro Kencana		
<b>Mulia Sawit Group</b>	<b>x</b>	<b>X</b>

Supply Chain Links: Consumer Brands	Avon	General Mills	Kellogg's	Mars	Mondelez
PT Persada Era Agro Kencana					
<b>Mulia Sawit Group</b>	<b>x</b>	<b>x</b>	<b>x</b>	<b>x</b>	<b>x</b>

Supply Chain Links: Consumer Brands	Nestle	Pepsico	PZ Cussons	Unilever
PT Persada Era Agro Kencana				
<b>Mulia Sawit Group</b>	<b>x</b>	<b>x</b>	<b>x</b>	<b>x</b>



# Group: Shin Yang

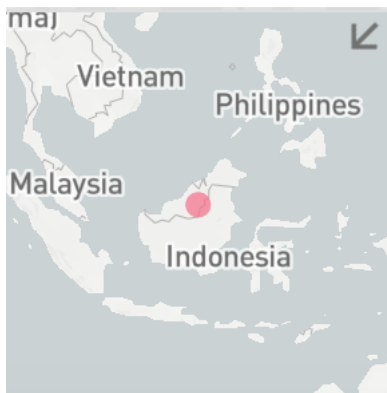
## Dataran Seping Sdn Bhd (Adam Oil Palm Estate)

Concession location: (2.517, 114.621)

### Deforestation and/or peat development

Report	Deforestation (ha)	Peat development (ha)	Peat forest development (ha)	Clearance prep/Stacking lines (ha)	Time period
Report 20	4	-	-	-	April 22, 2019 - Sept 23, 2019

Satellite imagery (see below) shows that between April 22, 2019 and September 23, 2019 a total of 4 hectares of forest were cleared in the Dataran Seping Sdn Bhd concession. (Imagery © 2019 Planet Labs Inc.)



## Alert Imagery (before and after satellite images)

Clearance location: (2.523, 114.542)

Date: April 22, 2019



Date: September 23, 2019



## Ownership Information

Dataran Seping Sdn Bhd (Adam Oil Palm Estate) is part of the Shin Yang Group,<sup>12</sup> which is involved in the oil palm and timber business in Sarawak.

Tan Sri Datuk Ling Chiong Ho is founder of the Shin Yang Group, and serves as the Chairman of Shin Yang Holding Sdn Bhd and Sarawak Oil Palms Bhd. Tan Sri Datuk Ling Chiong Ho and his brothers - Ling Chiong Sing, Ling Chiong Pin and Ling Chiong Sieng - are substantial shareholders of Shin Yang Holding Sdn Bhd. Tan Sri Datuk Lin Chiong Ho, Ling Chiong Sing and Lin Lu Kwang (the eldest son of Tan Sri Datuk Lin Chiong Ho) are substantial shareholders of Sarawak Oil Palms Bhd.

12. Company Profile, Companies Commission Malaysia



## Supply Chain Information

Supply Chain Links: Traders	AAK	ADM	Cargill	Fuji Oil	KLK	Louis Dreyfus	Olam	Sarawak Oil Palms
Dataran Seping Sdn Bhd								
<b>Shin Yang/Sarawak Oil Palms Bhd</b>	x	x	x	x	x	x	x	x

Supply Chain Links: Consumer Brands	Avon	Colgate-Palmolive	FrieslandCampina	General Mills	Hershey	Johnson & Johnson	Kellogg's
Dataran Seping Sdn Bhd							
<b>Shin Yang/Sarawak Oil Palms Bhd</b>	x	x	x	x	x	x	x

Supply Chain Links: Consumer Brands	Mars	Nestle	P&G	PepsiCo	Reckitt Benckiser	Unilever
Dataran Seping Sdn Bhd						
<b>Shin Yang/Sarawak Oil Palms Bhd</b>	x	x	x	x	x	x

## Additional cases identified using screened GLAD alerts

The following cases have been identified through screened GLAD alerts (see methodology below). As these cases are either repeat cases from previous Rapid Response reports or where Mighty Earth did not determine any supply chain links for these concessions/Groups, no Planet image analysis was conducted for these cases to save resources.

**Mighty Earth expects that palm oil traders conduct their own due diligence to determine if they are exposed to such companies/Groups. Further, traders without supply chain links to these cases should put them on their 'no buy' lists.**

Methodology:

For Indonesia, GLAD alerts are screened using the Indonesia Ministry of Forestry and the Environment land cover dataset for 2017 which classifies existing palm oil plantations and primary and secondary forest. Hence, only GLAD alerts in primary and secondary forest according to that dataset are included.

For Malaysia, GLAD alerts are screened to exclude known plantation areas using the Global Forest Watch (GFW) plantations dataset. This automatically eliminates the most common false positives, i.e. the replanting of palm that existed prior to the year 2000.

New Cases				
Concession/ license area	Group ownership	Area covered by screened GLAD alerts (ha)	Time period	Supply chain connection identified
PT Sebaung Sawit Plantation	Shanghai Xinjiu Chemical Co Ltd	~219	August 15 – September 15, 2019	None
PT Citrapermata Serundung	Unknown	~53	August 15 – September 15, 2019	None
PT Lestari Subur Indonesia	Unknown	~48	August 15 – September 15, 2019	None
PT Nunukan Bara Sukses	Pipit Group	~16	August 15 – September 15, 2019	None
PT Tri Investama	Green Yield Pte Ltd	~42	August 15 – September 15, 2019	None
PT Perwita Citra Nusantara	PT Shield of Service TBK	~10	August 15 – September 15, 2019	None
PT Mitra Sawit Makmur	Mitra Jaya	~48	August 15 – September 15, 2019	None
Koperasi Berkat Mumpa Bersatu	Unknown	~15	August 15 – September 15, 2019	None
Permodalan ASSAR Sdn Bhd	Unknown	~6	August 15 – September 15, 2019	None
Miracle Harvest Sdn Bhd	Kwantas Corporation	~7	August 15 – September 15, 2019	None

## Repeat Cases

Concession license area	Group/ownership	Area covered by screened GLAD alerts (ha)	Time period	Rapid Response reports related to each case
PT Menthobi Mitra Lestari	PT Bakrie Sumatra Plantations Tbk	~188	August 15 – September 15, 2019	Rapid Response reports <a href="#">16</a> and <a href="#">17</a>
PT Persada Era Agro Kencana	Mulia Sawit Group	~165	August 15 – September 15, 2019	Rapid Response reports <a href="#">9</a> , <a href="#">10</a> , <a href="#">11</a> , <a href="#">12</a> , <a href="#">15</a> , <a href="#">17</a> , <a href="#">18</a>
PT Internusa Jaya Sejahtera	Indonusa Group	~136	August 15 – September 15, 2019	Rapid Response reports <a href="#">7</a> , <a href="#">10</a> , <a href="#">11</a> , <a href="#">12</a> , <a href="#">15</a> , <a href="#">17</a>
PT Sawit Mandiri Lestari	PT Sawit Sumbermas Sarana Tbk	~127	August 15 – September 15, 2019	Rapid Response reports <a href="#">3</a> , <a href="#">7</a> , <a href="#">8</a> , <a href="#">9</a> , <a href="#">10</a> , <a href="#">14</a> , <a href="#">17</a> , <a href="#">18</a>
PT Gapura Alas Lestari	Unknown	~101	August 15 – September 15, 2019	Rapid Response report <a href="#">16</a> and <a href="#">19</a>
PT Permata Sawit Mandiri	Genting Group	~91	August 15 – September 15, 2019	Rapid Response reports <a href="#">15</a> and <a href="#">17</a>
PT Mulia Inti Perkasa	Widya Corporation	~71	August 15 – September 15, 2019	Rapid Response reports <a href="#">6</a> and <a href="#">15</a>
PT Kapuasindo Palm Industri	Evershine Asset Corporation and Everbright Resources Corporation	~61	August 15 – September 15, 2019	Rapid Response reports <a href="#">5</a> , <a href="#">6</a> , and <a href="#">12</a>
PT Kayan Plantation	Unknown	~59	August 15 – September 15, 2019	Rapid Response reports <a href="#">15</a> , <a href="#">17</a> , <a href="#">18</a> , and <a href="#">19</a>
PT Rimbun Sawit Papua	Salim/IndoGunta	~59	August 15 – September 15, 2019	Rapid Response reports <a href="#">3</a> , <a href="#">10</a> , <a href="#">14</a> , <a href="#">16</a> , <a href="#">17</a> , <a href="#">18</a>
PT Ichiko Agro Lestari	Unknown	~55	August 15 – September 15, 2019	Rapid Response reports <a href="#">14</a> , <a href="#">17</a> , and <a href="#">19</a>
PT Usaha Sawit Unggul	RGE Group	~47	August 15 – September 15, 2019	Rapid Response report <a href="#">17</a>
PT Indopenta Sejahtera Abadi	Wings Group	~43	August 15 – September 15, 2019	Rapid Response report <a href="#">19</a>
PT Future Agropia Indonesia	JSK International Co Ltd (Korea)	~34	August 15 – September 15, 2019	Rapid Response report <a href="#">17</a>
PT Sentosa Suksesutama	Wings Group	~31	August 15 – September 15, 2019	Rapid Response report <a href="#">16</a>

## Repeat Cases (continued)

Concession license area	Group/ownership	Area covered by screened GLAD alerts (ha)	Time period	Rapid Response reports related to each case
PT Sebaung Sawit Plantation	Shanghai Xinjui Checmical Co Ltd	~28	August 15 – September 15, 2019	Rapid Response reports <a href="#">8</a> , <a href="#">12</a> , <a href="#">13</a> , <a href="#">16</a>
PT Kahayan Agro Plantation	Anglo-Eastern Plantations	~27	August 15 – September 15, 2019	Rapid Response reports <a href="#">1</a> , <a href="#">14</a> , <a href="#">15</a> , and <a href="#">18</a>
PT Bina Sarana Sawit Utama	Samuel International Group	~27	August 15 – September 15, 2019	Rapid Response report <a href="#">19</a>
Koperasi Usaha Mandiri	Unknown	~25	August 15 – September 15, 2019	Rapid Response reports <a href="#">17</a> and <a href="#">19</a>
PT Pipit Citra Persada	Unknown	~23	August 15 – September 15, 2019	Rapid Response <a href="#">6</a> and <a href="#">17</a>
PT Palembang Segar Lestari	Henan Jiujiu Chemical Co. Ltd	~23	August 15 – September 15, 2019	Rapid Response report <a href="#">5</a> , <a href="#">7</a> , <a href="#">12</a> , <a href="#">13</a> , <a href="#">16</a> , <a href="#">18</a>
PT Jaya Jadi Utama	CB Industrial Product Holding	~22	August 15 – September 15, 2019	Rapid Response report <a href="#">15</a>
PT Berau Karetindo Lestari	Korompis family	~21	August 15 – September 15, 2019	Rapid Response reports <a href="#">2</a> , <a href="#">16</a> , and <a href="#">19</a>
Danum Sinar Sdn Bhd	Puncak Niaga	~290	August 15 – September 15, 2019	Rapid Response reports <a href="#">14</a> , <a href="#">16</a> , and <a href="#">19</a>
Samling Reforestation (Bintulu) Sdn Bhd: LPF/0008 Marudi estate	Samling	~166	August 15 – September 15, 2019	Rapid Response reports <a href="#">13</a> , <a href="#">17</a> , <a href="#">19</a>
LPF/0006 Samling Lana	Samling	~107	August 15 – September 15, 2019	Rapid Response reports <a href="#">15</a> , <a href="#">16</a> , <a href="#">18</a> , and <a href="#">19</a>
Mutiara Pelita Genaan Plantation Sdn Bhd	Double Dynasty	~107	August 15 – September 15, 2019	Rapid Response reports <a href="#">15</a> , <a href="#">16</a> , <a href="#">18</a> , and <a href="#">19</a>
LPF/0007 Samling Jelalong (OP)	Samling	~96	August 15 – September 15, 2019	Rapid Response reports <a href="#">15</a> , <a href="#">16</a> , <a href="#">18</a> , and <a href="#">19</a>
Dataran Linau OP (SY) (Lot 1 Block 14 Murum LD)	Shin Yang	~82	August 15 – September 15, 2019	Rapid Response reports <a href="#">17</a> , <a href="#">18</a> , and <a href="#">19</a>
Ladang Tabung Haji	TH Plantations Bhd	~54	August 15 – September 15, 2019	Rapid Response report <a href="#">15</a>

## Repeat Cases (continued)

Concession license area	Group/ownership	Area covered by screened GLAD alerts (ha)	Time period	Rapid Response reports related to each case
Formerly Ekran Bhd	Unknown	~40	August 15 – September 15, 2019	Rapid Response report <a href="#">19</a>
Poh Zhen Sdn Bhd	Rimbunan Hijau	~31	August 15 – September 15, 2019	Rapid Response reports <a href="#">17</a> and <a href="#">19</a>
Shin Yang (LPF 0018)	Shin Yang	~24	August 15 – September 15, 2019	Rapid Response reports <a href="#">18</a> and <a href="#">19</a>
Linau Sinar Sdn Bhd	Shin Yang	~23	August 15 – September 15, 2019	Rapid Response report <a href="#">13</a>
Kwantas Pelita Plantation (Balingian) Sdn Bhd	Kwantas	~22	August 15 – September 15, 2019	Rapid Response report <a href="#">14</a>
Hua Seng Plantation Sdn Bhd	Double Dynasty	~18	August 15 – September 15, 2019	Rapid Response report <a href="#">17</a> and <a href="#">18</a>
Samling Jelalong LPF 0007 (part 3)	Samling	~9	August 15 – September 15, 2019	Rapid Response report <a href="#">15</a> , <a href="#">16</a> , <a href="#">18</a> , <a href="#">19</a>
Syarikat Samling Timber Sdn Bhd (LPF 0014)	Samling	~9	August 15 – September 15, 2019	Rapid Response reports <a href="#">17</a> and <a href="#">19</a>
Pelita Holdings Sdn Bhd (LCDA-OT/9137)	Pelita Holdings Sdn Bhd	~8	August 15 – September 15, 2019	Rapid Response reports <a href="#">17</a> and <a href="#">18</a>
LPF/0007 Jelalong OP (Glenealy) Part 1	Samling	~8	August 15 – September 15, 2019	Rapid Response reports <a href="#">15</a> , <a href="#">16</a> , <a href="#">18</a> , and <a href="#">19</a>
Telliana Enterprise Sdn Bhd	Unknown	~7	August 15 – September 15, 2019	Rapid Response reports <a href="#">18</a> and <a href="#">19</a>
Selangor Oil Palm Industries Corporation Sdn Bhd	Unknown	~6	August 15 – September 15, 2019	Rapid Response reports <a href="#">18</a> and <a href="#">19</a>