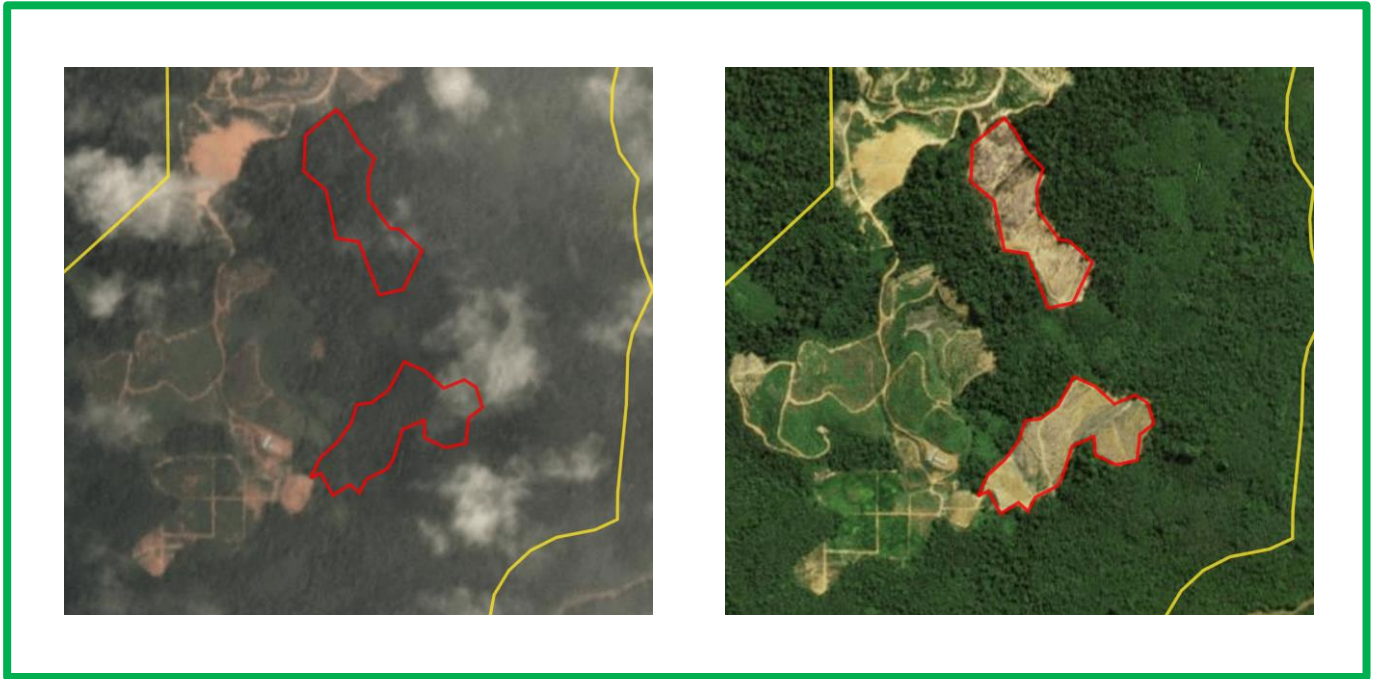


# Rapid Response

## Palm Oil, Report 19



**September 2019**

Prepared with support from MapHubs

## Table of Contents

### Cases identified using Planet imagery

#### Indonesian Companies

Lyman Agro Group: PT Bonti Permai Jayaraya	4
BEST Group: PT Wanasawit Subur Lestari	7
BEST Group: PT Karya Luhur Sejati	9
Samuel International Group: PT Bina Sarana Sawit Utama	11
Nurdin Tampubolon Corporation (NT Corp): PT Bintang Sakti Lengana	14
Tunas Baru Lampung / Sungai Budi Group: PT Samora Usaha Jaya (B)	17

#### Malaysian Companies

Wings Group: PT Indopenta Sejahtera Abadi	20
Wings Group: PT Indopenta Sejahtera Abadi A	23
Evershine Asset Corporation / Everbright Resources Corporation: PT Sentrakarya Manunggal	26
Rimbunan Hijau Group: RH Plantation (Selangor Estate)	29
Sime Darby Group: Sime Darby Plantation Sdn Bhd (Derawan, SOU 33)	32

### Additional cases identified using filtered GLAD alerts

#### New Cases

Unknown Group: Formerly Ekran Bhd	36
Unknown Group: PT Bumi Tani Jaya	36
Unknown Group: PT Fliel Green Power	36
Unknown Group: PT Sumber Rahmat Sentosa	36

#### Repeat Cases

Mulia Sawit Group: PT Persada Era Agro Kencana	37
Anglo-Eastern Plantations: PT Kahayan Agro Plantation	37
Unknown: PT Kayan Plantation	37
Samling: LPF/0007 Samling Jelalong (OP)	37
Samling: LPF/0007 Jelalong OP (Glenealy) Part 1	37
Double Dynasty: Mutiara Pelita Genaan Plantation Sdn Bhd	37
Samling: LPF/0006 Samling Lana	37

### Sources for supply chain information: <https://bit.ly/2NGAmRp>

Supply chain information included in Rapid Response reports is based on the latest public versions of mill disclosures, recent export data and grievance logs. Mighty Earth encourages companies to send updated versions of mill disclosures as soon as they become available and to share any decision to suspend relations with a given group/company listed in those mill disclosures; please send to [rapidresponse@mightyearth.org](mailto:rapidresponse@mightyearth.org).

## Table of Contents (cont.)

### Additional Cases Identified Using Filtered GLAD Alerts

#### Repeat Cases (continued)

Shin Yang: Dataran Linau OP (SY) (Lot 1 Block 14 Murum LD)	37
First Borneo Group: PT Wahana Hamparan Hijau	37
First Borneo Group: PT Borneo Estate Sejahtera	37
Pinehill Pacific Bhd: PT Makmur Jaya Malindo	37
KLK Bhd: PT Menteng Jaya Sawit Perdana	37
Shin Yang: Shin Yang (LPF 0018)	37
Unknown: Telliana Enterprise Sdn Bhd	37
Unknown: Titanium Management Sdn Bhd (Part 2)	37
Tradewinds: Trans Kenyaland Sdn Bhd	37
Unknown (former Makin Group): PT Krida Darma Kahuripan	37
Genting: PT Citra Sawit Cemerlang	37
Genting: PT Permata Sawit Mandiri	37
Unknown: PT Ichiko Agro Lestari	37
Samling Group: Samling Reforestation (Bintulu) Sdn Bhd: LPF/0008 Marudi estate	37
Unknown: PT Marita Makmur Jaya	37
Unknown: PT Prasetya Mitra Muda (Block I)	37
Unknown: PT Katingan Hijau Lestari	37
Unknown: Koperasi Usaha Mandiri	37
Rimbunan Hijau GRoup: Poh Zhen Sdn Bhd	37
WTK Group: Southwind Plantation Sdn Bhd	37
Samling Group: Syarikat Samling Timber Sdn Bhd (LPF 0014)	37
Samling Group: Samling Jelalong LPF 0007 (part 3)	37
Puncak Niaga: Danum Jaya Sdn Bhd	37
Triputra Agro Persada: PT Berau Karetindo Lestari	37
Unknown: PT Gapura Alas Lestari	37
Malindo: PT Malindo Jaya Diraja	37
Salim / IndoGunta: PT Sawit Berkat Sejahtera	37

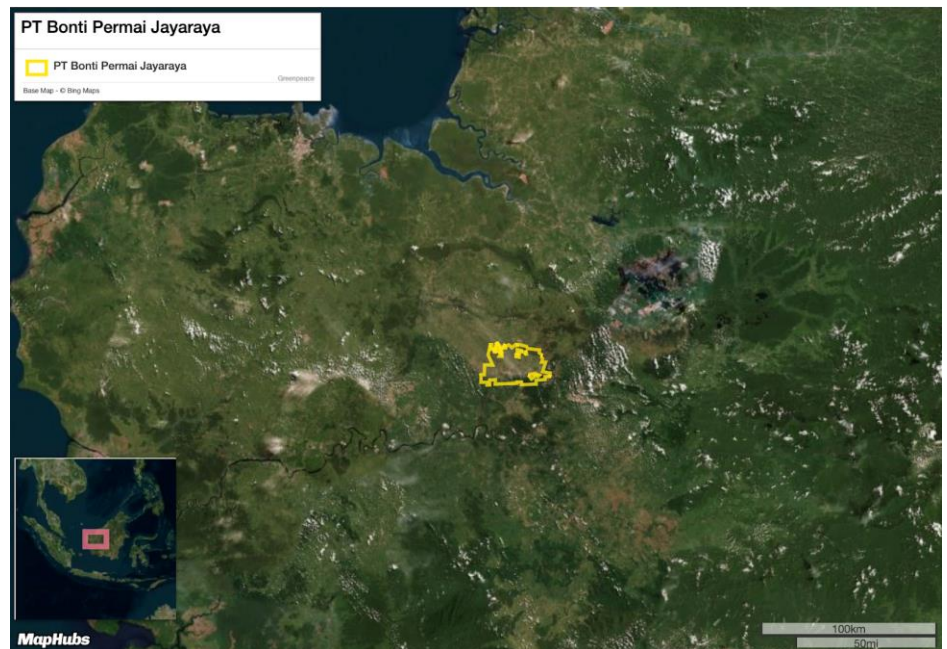
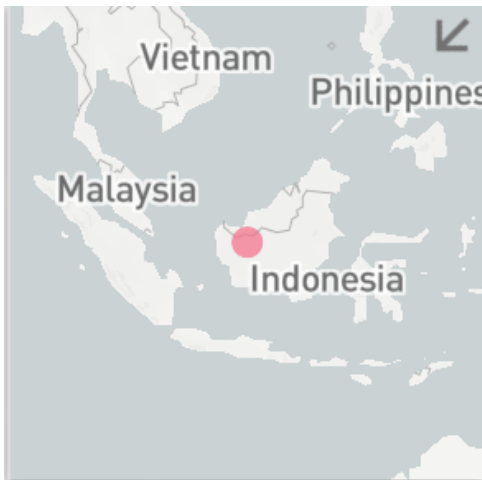
*The work of Mighty Earth is supported by Waxman Strategies. Waxman Strategies is funded by the National Wildlife Federation and Aidenvironment under grant from the Norwegian Agency for Development Cooperation. Additional information is on file with the Department of Justice, Washington, D.C.*

**Group: Lyman Agro**  
**PT Bonti Permai Jayaraya**  
 Concession location: (0.499, 111.402)

**Deforestation and/or peat development**

Report	Deforestation (ha)	Peat development (ha)	Peat forest development (ha)	Clearance prep/Stacking lines (ha)	Time period
Report 19	10	-	-	-	Jan. 17 – Aug. 4, 2019

Satellite imagery (see below) shows that between January 17, 2019 and August 4, 2019 a total of 10 hectares of forest were cleared in the PT Bonti Permai Jayaraya concession. (Imagery © 2019 Planet Labs Inc.).



## Alert Imagery (before and after satellite images)

Clearance location: (0.373, 111.557)

Date: January 17, 2019



Date: August 4, 2019



## Ownership Information

PT Bonti Permai Jayaraya is part of PT Lyman Agro (Lyman Agro Group).<sup>1</sup>

1. e.g., Fuji Oil palm oil mill list, [www.fujioilholdings.com/pdf/en/csr/supplychain\\_database/Fuji\\_H2\\_2018\\_Mill\\_List\\_FINAL.pdf](http://www.fujioilholdings.com/pdf/en/csr/supplychain_database/Fuji_H2_2018_Mill_List_FINAL.pdf)

## Supply Chain Information

Supply Chain Links: Traders	AAK	ADM	Bunge	Cargill	Fuji Oil	GAR	KLK	Louis Dreyfus	Musim Mas
PT Bonti Permai Jayaraya	x	x		x	x		x		
<b>Lyman Agro</b>	<b>x</b>	<b>x</b>	<b>x</b>	<b>x</b>	<b>x</b>	<b>x</b>	<b>x</b>	<b>x</b>	<b>x</b>

Supply Chain Links: Consumer Brands	Avon	Colgate-Palmolive	General Mills	Hershey	Kellogg's	Mars	Mondelez
PT Bonti Permai Jayaraya	x	x	x	x	x	x	
<b>Lyman Agro</b>	<b>x</b>	<b>x</b>	<b>x</b>	<b>x</b>	<b>x</b>	<b>x</b>	<b>x</b>

Supply Chain Links: Consumer Brands	Nestle	PepsiCo	P&G	PZ Cussons	Unilever
PT Bonti Permai Jayaraya	x	x			x
<b>Lyman Agro</b>	<b>x</b>	<b>x</b>	<b>x</b>	<b>x</b>	<b>x</b>



## Group: BEST Group

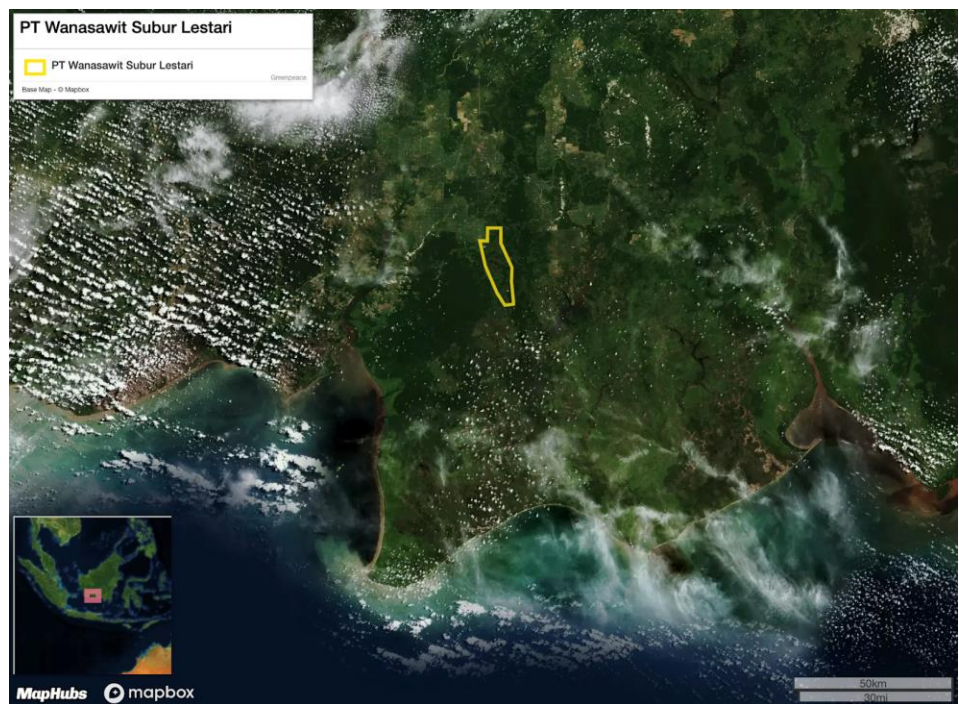
### PT Wanasawit Subur Lestari

Concession location: (-2.662, 112.138)

#### Deforestation and/or peat development

Report	Deforestation (ha)	Peat development (ha)	Peat forest development (ha)	Clearance prep/Stacking lines (ha)	Time period
Report 19	63	-	-	-	Oct. 29, 2018 – Aug. 7, 2019

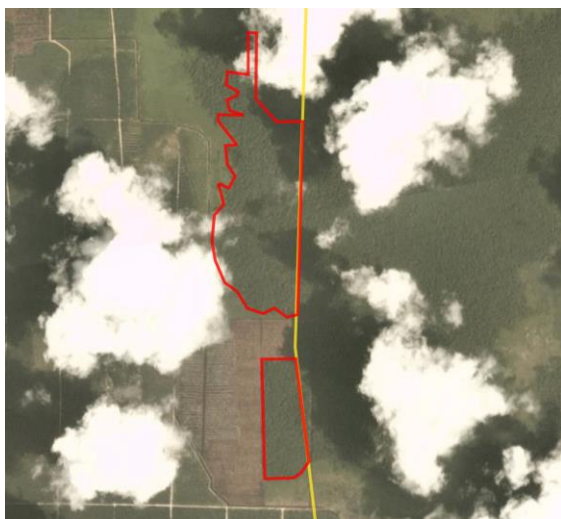
Satellite imagery (see below) shows that between October 29, 2018 and August 7, 2019 a total of 63 hectares of forest were cleared in the PT Wanasawit Subur Lestari concession. (Imagery © 2019 Planet Labs Inc.)



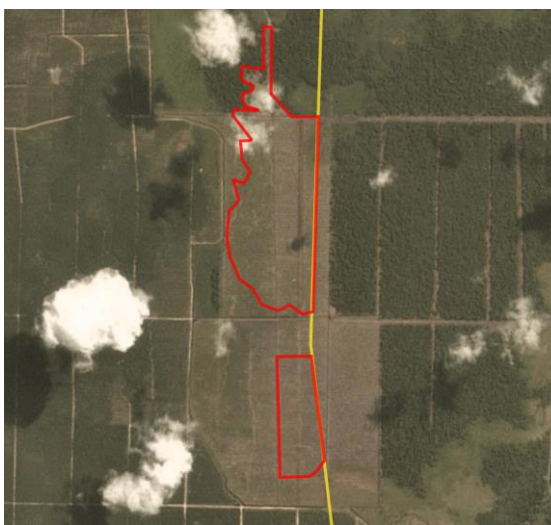
## Alert Imagery (before and after satellite images)

Clearance location: (-2.683, 112.173)

Date: October 29, 2018



Date: August 7, 2019



## Ownership Information

PT Wanasawit Subur Lestari is owned through PT Best Capital Investment (BEST Group),<sup>2</sup> which is owned by the Indonesian Tjajadi family.

## Supply Chain Information

Supply Chain Links: Traders and Consumer Brands	IFFCO*	Neste Oil
PT Wanasawit Subur Lestari		x
<b>BEST Group</b>	x	x

\* Based on export trade data, 2019

2. Notary Acts for PT Wanasawit Subur Lestari, PT Bio Green Indonesia and PT Best Capital Investment



# Group: BEST Group

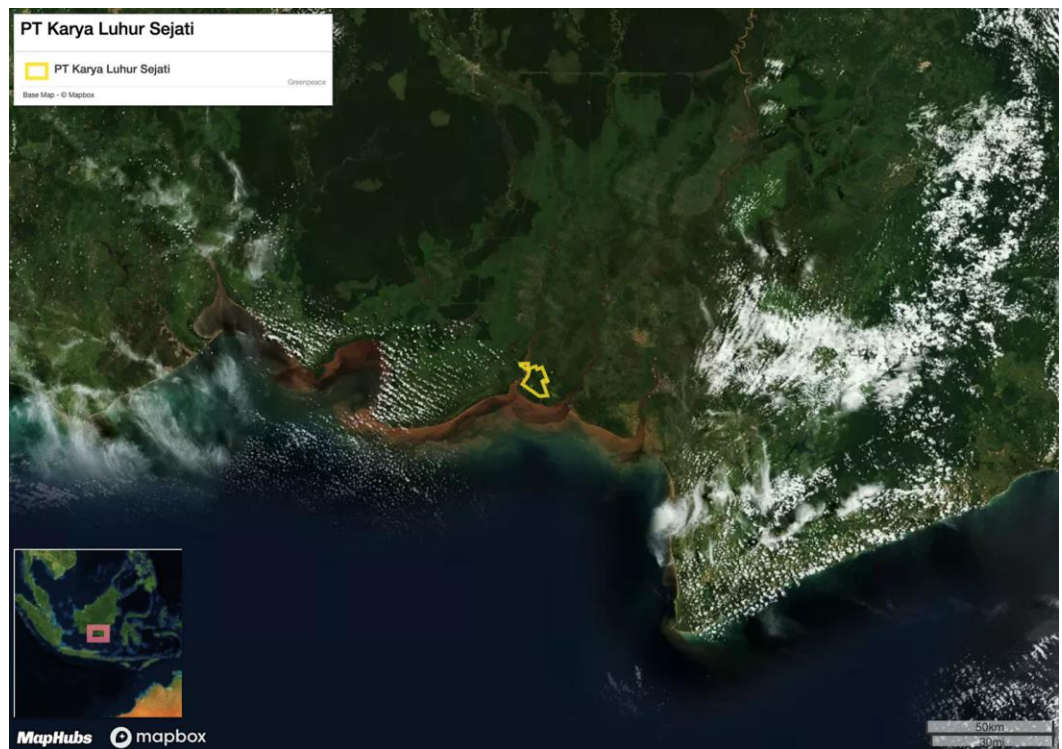
PT Karya Luhur Sejati

Concession location: -3.299, 114.138

## Deforestation and/or peat development

Report	Deforestation (ha)	Peat development (ha)	Peat forest development (ha)	Clearance prep/Stacking lines (ha)	Time period
Report 19		199			April 18, 2018 – Sept. 2, 2019

Satellite imagery (see below) shows that between April 18, 2018 and September 2, 2019 a total of 199 hectares of peat was developed in the PT Karya Luhur Sejati concession. (Imagery © 2019 Planet Labs Inc.)



### Alert Imagery (before and after satellite images)

Clearance location: (-3.301, 114.137)

Date: April 18, 2019



Date: September 2, 2019



### Ownership Information

PT Karya Luhur Sejati is part of the BEST Group,<sup>3</sup> which is owned by the Indonesian Tjajadi family.

### Supply Chain Information

Supply Chain Links: Traders and Consumer Brands	IFFCO*	Neste Oil
PT Karya Luhur Sejati		
<b>BEST Group</b>	<b>x</b>	<b>x</b>

\* Based on export trade data, 2019

3. Notary Act for PT Karya Luhur Sejati

## Group: Samuel International Group

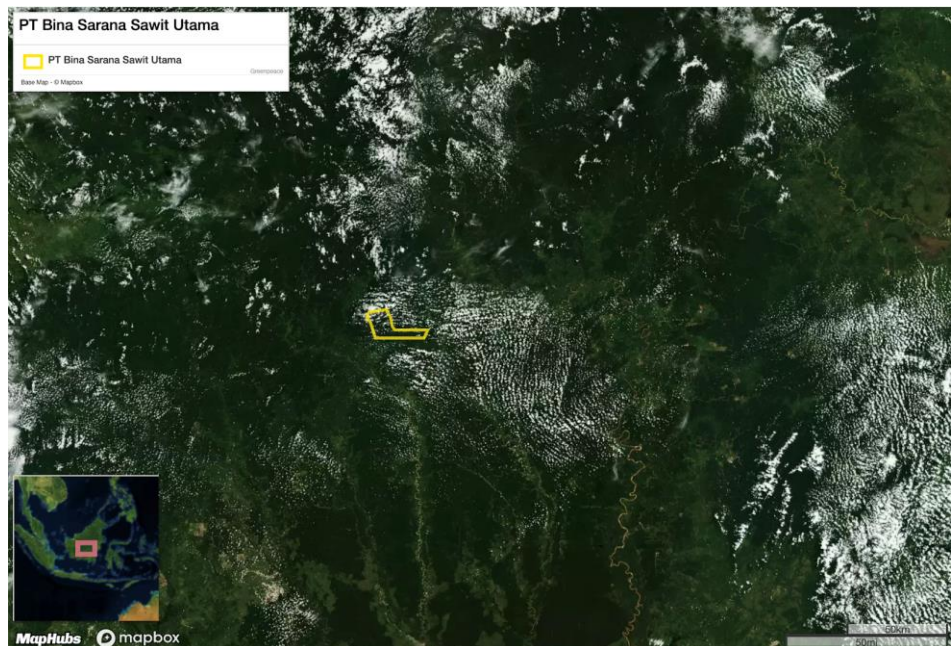
### PT Bina Sarana Sawit Utama

Concession location: (-0.789, 113.787)

#### Deforestation and/or peat development

Report	Deforestation (ha)	Peat development (ha)	Peat forest development (ha)	Clearance prep/Stacking lines (ha)	Time period
Report 19	-	-	-	117	June 12 – Aug. 4, 2019

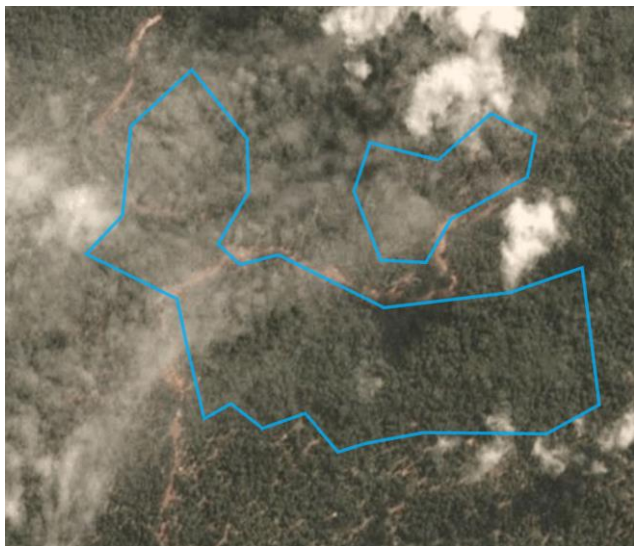
Satellite imagery (see below) shows that between June 12, 2019 and August 4, 2019 a total of 117 hectares of forest were prepared for clearance/stacking lines in the PT Bina Sarana Sawit Utama concession. (Imagery © 2019 Planet Labs Inc.)



## Alert Imagery (before and after satellite images)

Clearance location: (-0.79, 113.739)

Date: June 12, 2019



Date: August 4, 2019



## Ownership Information

PT Bina Sarana Sawit Utama is part of the Samuel International Group.<sup>5</sup> See Rapid Response report 6 for further information of the group.

5. Notary Act for PT Bina Sarana Sawit Utama



## Supply Chain Information

Supply Chain Links: Traders	AAK	ADM	Bunge	Cargill	GAR	KLK	Wilmar
PT Bina Sarana Sawit Utama							
<b>Samuel International Group</b>	x	x	x	x	x	x	x

Supply Chain Links: Consumer Brands	Avon	Colgate-Palmolive	General Mills	Hershey	Johnson & Johnson	Kellogg's
PT Bina Sarana Sawit Utama						
<b>Samuel International Group</b>	x	x	x	x	x	x

Supply Chain Links: Consumer Brands	Mars	Mondelez	Nestle	PepsiCo	P&G	Reckitt Benckiser	Unilever
PT Bina Sarana Sawit Utama							
<b>Samuel International Group</b>	x	x	x	x	x	x	x



# Group: Nurdin Tambubolon Corporation (NT Corp)

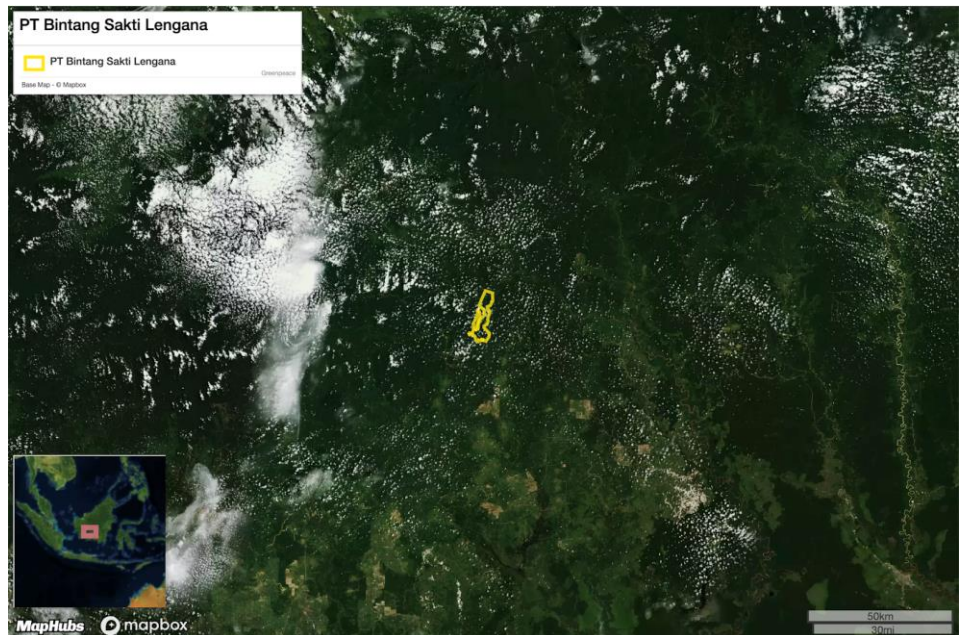
## PT Bintang Sakti Lenggana

Concession location: (-1.424, 112.626)

### Deforestation and/or peat development

Report	Deforestation (ha)	Peat development (ha)	Peat forest development (ha)	Clearance prep/Stacking lines (ha)	Time period
Report 19	21	-	-	-	Feb. 7 – June 14, 2019

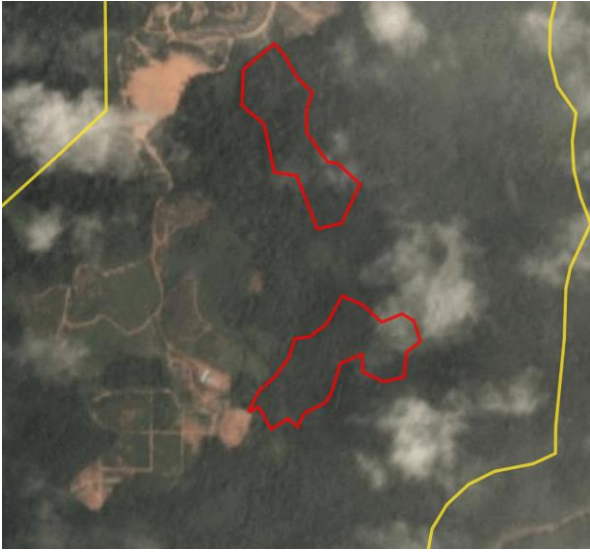
Satellite imagery (see below) shows that between February 7, 2019 and June 14, 2019 a total of 21 hectares of forest were cleared in the PT Bintang Sakti Lenggana concession. (Imagery © 2019 Planet Labs Inc.)



## Alert Imagery (before and after satellite images)

Clearance location: (-1.413, 112.639)

Date: February 7, 2019



Date: June 14, 2019



## Ownership Information

PT Bintang Sakti Lenggana is owned by PT Bangkit Giat Usaha Mandiri (BUM),<sup>6</sup> which is ultimately part of the Nurdin Tampubolon Corporation (NT Corp).<sup>7</sup>

6. Notary Act for PT Bintang Sakti Lenggana; <https://web.archive.org/web/20180623073717/http://www.ntcorporate.com/#>

7. [www.bumindonesia.co.id/about](http://www.bumindonesia.co.id/about)

## Supply Chain Information

Supply Chain Links: Traders	AAK	ADM	Bunge	Cargill	Fuji Oil	GAR	KLK	Sime Darby	Wilmar
PT Bintang Sakti Lenggana									
<b>NT Corp</b>	<b>x</b>	<b>x</b>	<b>x</b>	<b>x</b>	<b>x</b>	<b>x</b>	<b>x</b>	<b>x</b>	<b>x</b>

Supply Chain Links: Consumer Brands	Avon	Colgate-Palmolive	General Mills	Hershey	Johnson & Johnson	Kellogg's	Mars
PT Bintang Sakti Lenggana							
<b>NT Corp</b>	<b>x</b>	<b>x</b>	<b>x</b>	<b>x</b>	<b>x</b>	<b>x</b>	<b>x</b>

Supply Chain Links: Consumer Brands	Mondelez	Nestle	PepsiCo	P&G	Reckitt Benckiser	Unilever
PT Bintang Sakti Lenggana						
<b>NT Corp</b>	<b>x</b>	<b>x</b>	<b>x</b>	<b>x</b>	<b>x</b>	<b>x</b>

## Group: Tunas Baru Lampung / Sungai Budi

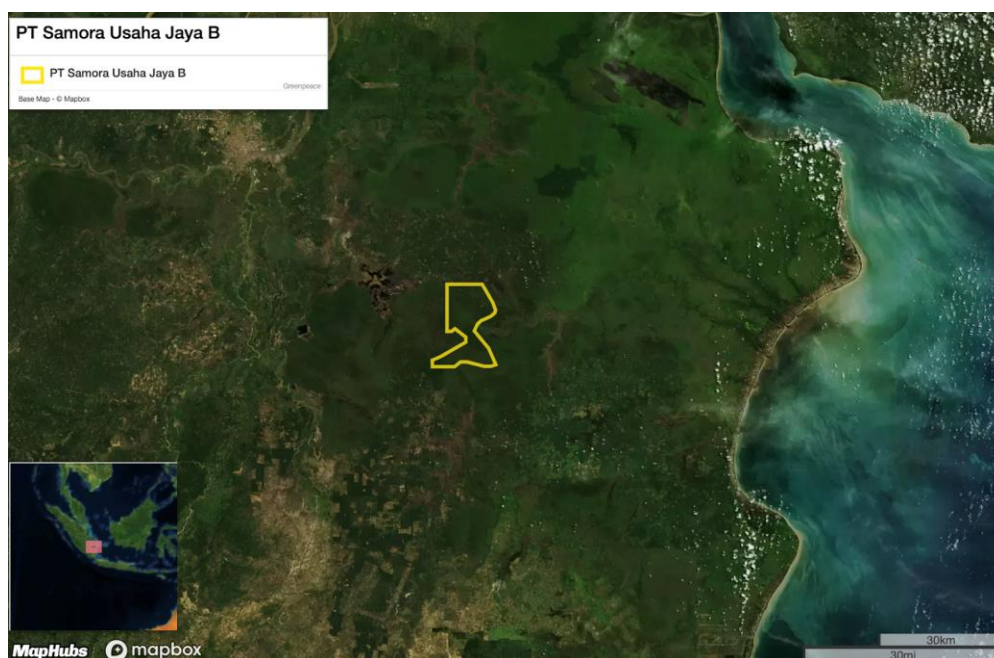
PT Samora Usaha Jaya (B)

Concession location: (-3.366, 105.244)

### Deforestation and/or peat development

Report	Deforestation (ha)	Peat development (ha)	Peat forest development (ha)	Clearance prep/Stacking lines (ha)	Time period
Report 19	216	-	-	-	May 18 – August 5, 2019

Satellite imagery (see below) shows that between May 18, 2019 and August 5, 2019 a total of 216 hectares of forest were cleared in the PT Samora Usaha Jaya (B) concession. (Imagery © 2019 Planet Labs Inc.)



## Alert Imagery (before and after satellite images)

Clearance location: (-3.315, 105.209)

Date: May 18, 2019



Date: August 5, 2019



## Ownership Information

PT Samora Usaha Jaya (B) is part of the Tunas Baru Lampung Group,<sup>8</sup> which is ultimately part of the Sungai Budi Group.<sup>9</sup>

8. Tunas Baru Lampung Tbk Annual Report 2018 <https://chainreactionresearch.files.wordpress.com/2018/03/tunas-baru-lampung-report.pdf>  
9. <http://www.tunasbarulampung.com/en/>



## Supply Chain Information

Supply Chain Links: Traders	Felda IFFCO*	Fuji Oil
PT Samora Usaha Jaya (B)		
<b>Tunas Baru Lampung</b>	<b>x</b>	<b>x</b>
<b>Sungai Budi</b>	<b>x</b>	<b>x</b>

\* Based on export trade data, 2019

Supply Chain Links: Consumer Brands	Avon	Colgate-Palmolive	General Mills	Hershey	Johnson & Johnson	Kellogg's	Mars
PT Samora Usaha Jaya (B)							
<b>Tunas Baru Lampung</b>	<b>x</b>	<b>x</b>	<b>x</b>	<b>x</b>	<b>x</b>	<b>x</b>	<b>x</b>
<b>Sungai Budi Group</b>	<b>x</b>	<b>x</b>	<b>x</b>	<b>x</b>	<b>x</b>	<b>x</b>	<b>x</b>

Supply Chain Links: Consumer Brands	Mondelez	Neste Oil	Nestle	P&G	PepsiCo	PZ Cussons	Unilever
PT Samora Usaha Jaya (B)							
<b>Tunas Baru Lampung</b>	<b>x</b>	<b>x</b>	<b>x</b>	<b>x</b>	<b>x</b>	<b>x</b>	<b>x</b>
<b>Sungai Budi Group</b>			<b>x</b>	<b>x</b>	<b>x</b>	<b>x</b>	<b>x</b>

## Group: Wings

### PT Indopenta Sejahtera Abadi

Concession location: (-2.051, 115.002)

#### Deforestation and/or peat development

Report	Deforestation (ha)	Peat development (ha)	Peat forest development (ha)	Clearance prep/Stacking lines (ha)	Time period
Report 19	54	-	-	-	May 12 – Aug. 21, 2019

Satellite imagery (see below) shows that between May 12, 2019 and August 21, 2019 a total of 54 hectares of forest were cleared in the PT Indopenta Sejahtera Abadi concession. (Imagery © 2019 Planet Labs Inc.)



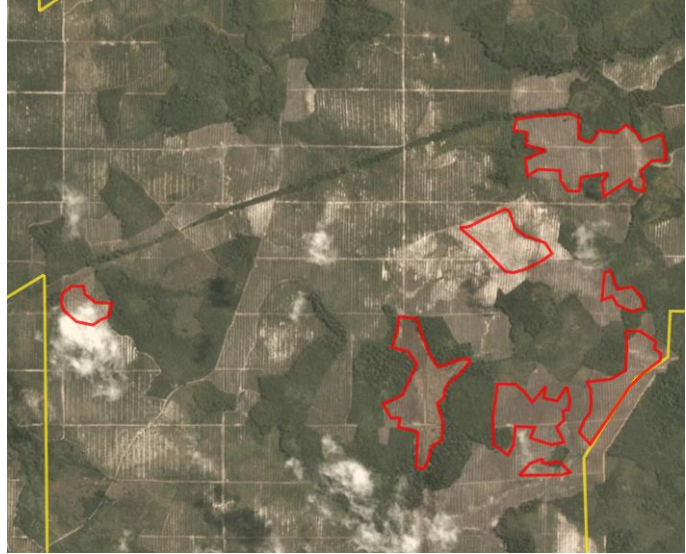
## Alert Imagery (before and after satellite images)

Clearance location: (-2.053, 115.021)

Date: May 12, 2019



Date: August 21, 2019



## Ownership Information

PT Indopenta Sejahtera is a subsidiary of PT Gawi Makmur Kalimantan (an RSPO member), which is part of the Wings Group.<sup>10</sup>

10. Notary Acts for PT Indopenta Sejahtera; RSPO website <https://rspo.org/members/1199/PT.-GAWI-MAKMUR-KALIMANTAN>

## Supply Chain Information

Supply Chain Links: Traders	Cargill	Louis Dreyfus
PT Indopenta Sejahtera Abadi		
<b>Wings Group</b>	x	x

Supply Chain Links: Consumer Brands	General Mills	Johnson & Johnson	Kellogg's	Mars	Nestle	Unilever
PT Indopenta Sejahtera Abadi						
<b>Wings Group</b>	x	x	x	x	x	x

# Group: Wings

## PT Indopenta Sejahtera Abadi A

Concession location: (-2.139, 114.967)

### Deforestation and/or peat development

Report	Deforestation (ha)	Peat development (ha)	Peat forest development (ha)	Clearance prep/Stacking lines (ha)	Time period
Report 19	57	-	-	-	May 28 – Aug. 29, 2019

Satellite imagery (see below) shows that between May 28, 2019 and August 29, 2019 a total of 57 hectares of forest were cleared in the PT Indopenta Sejahtera Abadi A concession. (Imagery © 2019 Planet Labs Inc.)





## Alert Imagery (before and after satellite images)

Date: May 28, 2019 (for all images below)



Clearance location: (-2.148, 114.962)

Date: August 29, 2019 (for all images below)



Clearance location: (-2.118, 114.951)



## Ownership Information

PT Indopenta Sejahtera is a subsidiary of PT Gawi Makmur Kalimantan (an RSPO member), which is part of the Wings Group.<sup>11</sup>

11. Notary Acts for PT Indopenta Sejahtera; RSPO website <https://rspo.org/members/1199/PT.-GAWI-MAKMUR-KALIMANTAN>

## Supply Chain Information

Supply Chain Links: Traders	Cargill	Louis Dreyfus
PT Indopenta Sejahtera Abadi A		
<b>Wings Group</b>	<b>x</b>	<b>x</b>

Supply Chain Links: Consumer Brands	General Mills	Johnson & Johnson	Kellogg's	Mars	Nestle	Unilever
PT Indopenta Sejahtera Abadi A						
<b>Wings Group</b>	<b>x</b>	<b>x</b>	<b>x</b>	<b>x</b>	<b>x</b>	<b>x</b>

# Group: Evershine Asset Corporation / Everbright Resources Corporation

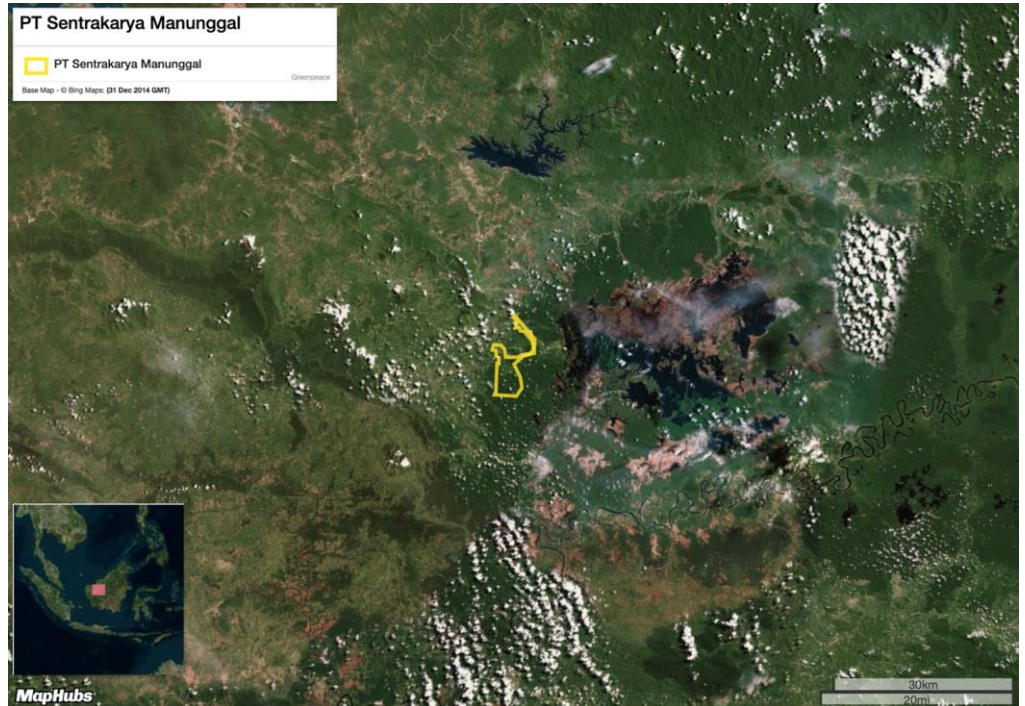
## PT Sentrakarya Manunggal

Concession location: (0.8288, 111.9)

### Deforestation and/or peat development

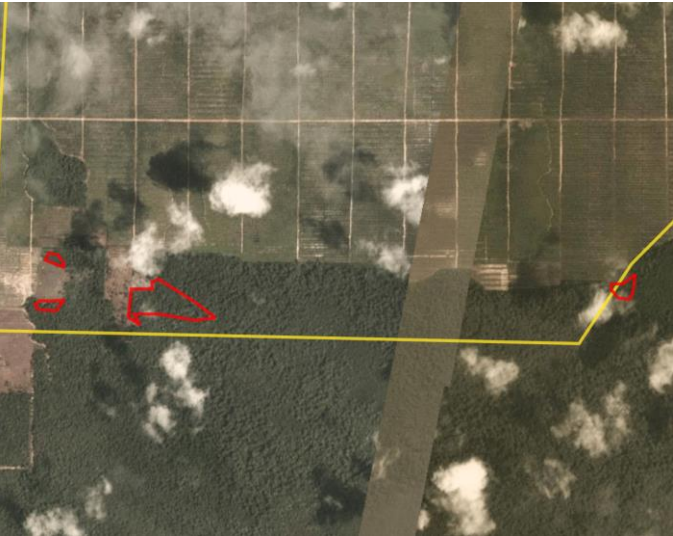
Report	Deforestation (ha)	Peat development (ha)	Peat forest development (ha)	Clearance prep/Stacking lines (ha)	Time period
Report 19	9	-	-	-	Feb. 19 – July 17, 2019

Satellite imagery (see below) shows that between February 19, 2019 and July 17, 2019 a total of 9 hectares of forest were cleared in the PT Sentrakarya Manunggal concession. (Imagery © 2019 Planet Labs Inc.)



### Alert Imagery (before and after satellite images)

Date: February 19, 2019



Date: July 17, 2019



### Ownership Information

PT Sentrakarya Manunggal is ultimately owned by the Everbright Resources Corporation and Evershine Asset Corporation through a series of Indonesian holding companies.<sup>12</sup>

12. Notary Acts for PT Sentrakarya Manunggal and holding companies



## Supply Chain Information

Supply Chain Links: Traders	AAK	ADM	Cargill	Fuji Oil	Sarawak Oil Palms (SOP) *
PT Sentrakarya Manunggal					
<b>Evershine Asset Corporation / Everbright Resources Corporation</b>	<b>x</b>	<b>x</b>	<b>x</b>	<b>x</b>	<b>x</b>

\* Based on export trade data, 2019

Supply Chain Links: Consumer Brands	Avon	Colgate-Palmolive	General Mills	Hershey	Kellogg's	Mars
PT Sentrakarya Manunggal						
<b>Evershine Asset Corporation / Everbright Resources Corporation</b>	<b>x</b>	<b>x</b>	<b>x</b>	<b>x</b>	<b>x</b>	<b>x</b>

Supply Chain Links: Consumer Brands	Nestle	PepsiCo	P&G	Reckitt Benckiser	Unilever
PT Sentrakarya Manunggal					
<b>Evershine Asset Corporation / Everbright Resources Corporation</b>	<b>x</b>	<b>x</b>	<b>x</b>	<b>x</b>	

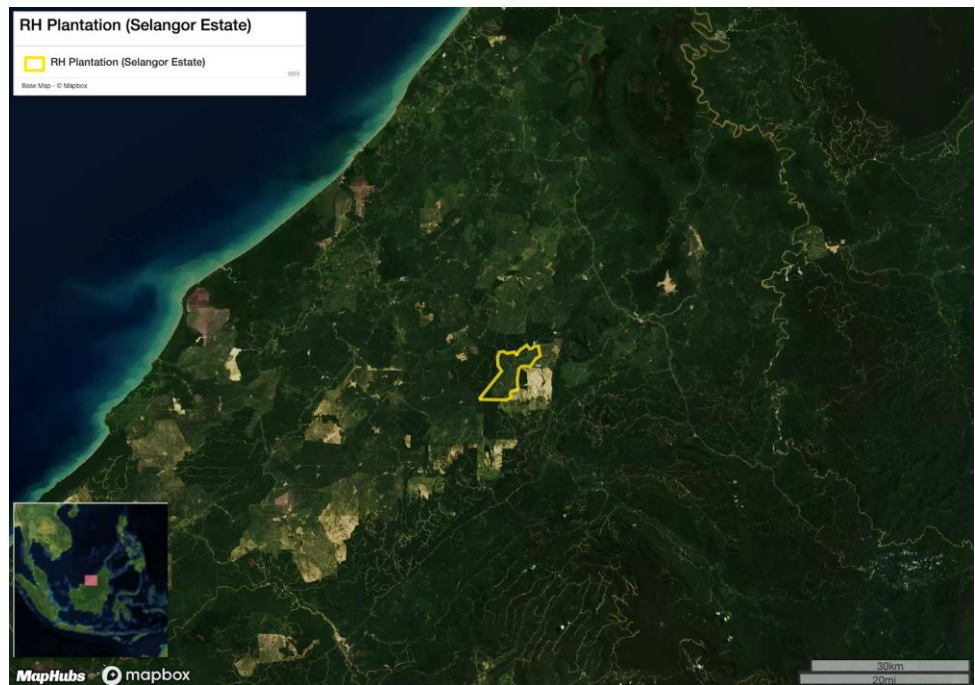


**Group: Rimbunan Hijau**  
**RH Plantation (Selangor Estate)**  
 Concession location: (3.628, 113.989)

**Deforestation and/or peat development**

Report	Deforestation (ha)	Peat development (ha)	Peat forest development (ha)	Clearance prep/Stacking lines (ha)	Time period
Report 19	-	-	-	37	May 5 – August 18, 2019

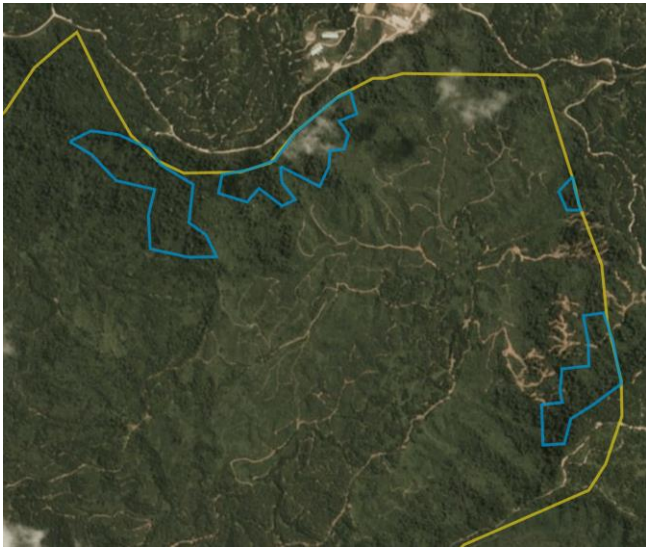
Satellite imagery (see below) shows that between May 5, 2019 and August 18, 2019 a total of 37 hectares of forest were prepared for clearance in the RH Plantation (Selangor Estate) concession. (Imagery © 2019 Planet Labs Inc.)



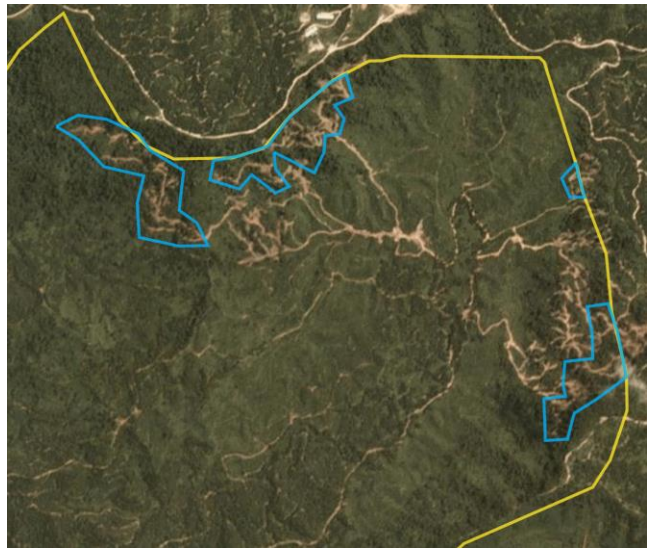
## Alert Imagery (before and after satellite images)

Clearance location: (3.657, 114.006)

Date: May 5, 2019



Date: Aug. 18, 2019



## Ownership Information

RH Plantation (Selangor Estate) is part of the Rimbunan Hijau Group.<sup>14</sup>

14. E.g., [www.sirim-qas.com.my/sirim/core-files/uploads/2018/10/Public-Summary-Jayamax-Estate-ST2-2017-MSP0-MS2530-3.pdf](http://www.sirim-qas.com.my/sirim/core-files/uploads/2018/10/Public-Summary-Jayamax-Estate-ST2-2017-MSP0-MS2530-3.pdf); [www.rsb.com.my/cert.html](http://www.rsb.com.my/cert.html)

## Supply Chain Information

Supply Chain Links: Traders	AAK	ADM	Cargill	Fuji Oil	KLK	Olam	Sime Darby	Wilmar
RH Plantation (Selangor Estate)			x			x	x	x
<b>Rimbunan Hijau</b>	<b>x</b>	<b>x</b>	<b>x</b>	<b>x</b>	<b>x</b>	<b>x</b>	<b>x</b>	<b>x</b>

Supply Chain Links: Consumer Brands	Avon	Colgate-Palmolive	General Mills	Hershey	Johnson & Johnson	Kellogg's	Mars
RH Plantation (Selangor Estate)							
<b>Rimbunan Hijau</b>	<b>x</b>	<b>x</b>	<b>x</b>	<b>x</b>	<b>x</b>	<b>x</b>	<b>x</b>

Supply Chain Links: Consumer Brands	Mondelez	Neste Oil	Nestle	PepsiCo	P&G	PZ Cussons	Reckitt Benckiser	Unilever
RH Plantation (Selangor Estate)								
<b>Rimbunan Hijau</b>	<b>x</b>	<b>x</b>	<b>x</b>	<b>x</b>	<b>x</b>	<b>x</b>	<b>x</b>	<b>x</b>

## Group: Sime Darby

### Sime Darby Plantation Sdn Bhd (Derawan, SOU 33)

Concession location: (3.406, 113.361)

#### Deforestation and/or peat development

Report	Deforestation (ha)	Peat development (ha)	Peat forest development (ha)	Clearance prep/Stacking lines (ha)	Time period
Report 19	8	-	-	-	Feb. 19 – Aug. 23, 2019

Satellite imagery (see below) shows that between February 19, 2019 and August 23, 2019 a total of 8 hectares were cleared in the Sime Darby Plantation Sdn Bhd (Derawan, SOU 33) concession. (Imagery © 2019 Planet Labs Inc.)



## Alert Imagery (before and after satellite images)

Clearance location: (3.353, 113.39)

Date: February 19, 2019



Date: August 23, 2019



## Ownership Information

Sime Darby Plantation Sdn Bhd (Derawan, SOU 33) is part of the Sime Darby Group.<sup>15</sup>

15. [www.sirim-qas.com.my/sirim/core-files/uploads/2019/03/17-Sime-Darby-Plantation-Sdn-Bhd-%E2%80%93-Derawan-Palm-Oil-Mill-2nd-Surveillance-2018.pdf](http://www.sirim-qas.com.my/sirim/core-files/uploads/2019/03/17-Sime-Darby-Plantation-Sdn-Bhd-%E2%80%93-Derawan-Palm-Oil-Mill-2nd-Surveillance-2018.pdf)



## Supply Chain Information

Supply Chain Links: Traders	AAK	ADM	Bunge	Cargill	Fuji Oil	IFFCO	IOI	KLK
Sime Darby Plantation Sdn Bhd (Derawan, SOU 33)		x	x	x	x			
<b>Sime Darby</b>	<b>x</b>	<b>x</b>	<b>x</b>	<b>x</b>	<b>x</b>	<b>x</b>	<b>x</b>	<b>x</b>

Supply Chain Links: Traders	Louis Dreyfus	Mewah	Musim Mas	Olam	Pacific Inter-Link	Sime Darby	Wilmar
Sime Darby Plantation Sdn Bhd (Derawan, SOU 33)				x			x
<b>Sime Darby</b>	<b>x</b>	<b>x</b>	<b>x</b>	<b>x</b>	<b>x</b>	<b>x</b>	<b>x</b>

Supply Chain Links: Consumer Brands	Avon	Colgate-Palmolive	Ferrero	General Mills	Hershey	ISF	Johnson & Johnson	Kellogg's
Sime Darby Plantation Sdn Bhd (Derawan, SOU 33)	x	x		x	x		x	x
<b>Sime Darby</b>	<b>x</b>	<b>x</b>	<b>x</b>	<b>x</b>	<b>x</b>	<b>x</b>	<b>x</b>	<b>x</b>

## Supply Chain Information (continued)

Supply Chain Links: Consumer Brands	Mars	Mondelez	Neste Oil	Nestle	PepsiCo	P&G	PZ Cussons	Reckitt Benckiser	Unilever
Sime Darby Plantation Sdn Bhd (Derawan, SOU 33)	x	X		x	x	x	X	x	x
<b>Sime Darby</b>	<b>X</b>	<b>x</b>	<b>x</b>	<b>x</b>	<b>x</b>	<b>x</b>	<b>x</b>	<b>x</b>	<b>x</b>

## Additional cases identified using screened GLAD alerts

The following cases have been identified through screened GLAD alerts (see methodology below). As these cases are either repeat cases from previous Rapid Response reports or where Mighty Earth did not determine any supply chain links for these concessions/Groups, no Planet image analysis was conducted for these cases to save resources.

**Mighty Earth expects that palm oil traders conduct their own due diligence to determine if they are exposed to such companies/Groups. Further, traders without supply chain links to these cases should put them on their 'no buy' lists.**

Methodology:

For Indonesia, GLAD alerts are screened using the Indonesia Ministry of Forestry and the Environment land cover dataset for 2017 which classifies existing palm oil plantations and primary and secondary forest. Hence, only GLAD alerts in primary and secondary forest according to that dataset are included.

For Malaysia, GLAD alerts are screened to exclude known plantation areas using the Global Forest Watch (GFW) plantations dataset. This automatically eliminates the most common false positives, i.e. the replanting of palm that existed prior to the year 2000.

New Cases				
Concession/ license area	Group ownership	Area covered by screened GLAD alerts (ha)	Time period	Supply chain connection identified
Formerly Ekran Bhd	Unknown	~53	July 15 – August 15, 2019	None
PT Bumi Tani Jaya	Unknown	~10	July 15 – August 15, 2019	None
PT Fliel Green Power	Unknown	~19	July 15 – August 15, 2019	None
PT Sumber Rahmat Sentosa	Unknown		July 15 – August 15, 2019	None

## Repeat Cases

Concession license area	Group/ownership	Area covered by screened GLAD alerts (ha)	Time period	Rapid Response reports related to each case
PT Persada Era Agro Kencana	Mulia Sawit Group	~124	July 15 – August 15, 2019	Rapid Response reports <a href="#">9</a> , <a href="#">10</a> , <a href="#">11</a> , <a href="#">12</a> , <a href="#">15</a> , <a href="#">17</a> , <a href="#">18</a>
PT Kahayan Agro Plantation	Anglo-Eastern Plantations	~22	July 15 – August 15, 2019	Rapid Response reports <a href="#">1</a> , <a href="#">14</a> , <a href="#">15</a> , <a href="#">18</a>
PT Kayan Plantation	Unknown	~22	July 15 – August 15, 2019	Rapid Response reports <a href="#">15</a> , <a href="#">17</a> , <a href="#">18</a>
LPF/0007 Samling Jelalong (OP)	Samling	~95	July 15 – August 15, 2019	Rapid Response reports <a href="#">15</a> , <a href="#">16</a> , <a href="#">18</a>
LPF/0007 Jelalong OP (Glenealy) Part 1	Samling	~42	July 15 – August 15, 2019	Rapid Response reports <a href="#">15</a> , <a href="#">16</a> , <a href="#">18</a>
Mutiara Pelita Genaan Plantation Sdn Bhd	Double Dynasty	~14	July 15 – August 15, 2019	Rapid Response reports <a href="#">15</a> , <a href="#">16</a> , <a href="#">18</a>
LPF/0006 Samling Lana	Samling	~320	July 15 – August 15, 2019	Rapid Response reports <a href="#">15</a> , <a href="#">16</a> , <a href="#">18</a>
Dataran Linau OP (SY) (Lot 1 Block 14 Murum LD)	Shin Yang	~258	July 15 – August 15, 2019	Rapid Response reports <a href="#">17</a> , <a href="#">18</a>
PT Wahana Hamparan Hijau	First Borneo Group	~67	July 15 – August 15, 2019	Rapid Response reports <a href="#">17</a> , <a href="#">18</a>
PT Borneo Estate Sejahtera	First Borneo Group	~22	July 15 – August 15, 2019	Rapid Response report <a href="#">15</a> , <a href="#">18</a>
PT Artanusa Agrindo	Unknown	~22	July 15 – August 15, 2019	<a href="#">Rapid Response report 18</a>
PT Makmur Jaya Malindo	Pinehill Pacific Bhd	~42	July 15 – August 15, 2019	<a href="#">Rapid Response report 18</a>
PT Menteng Jaya Sawit Perdana	KLK Bhd	~15	July 15 – August 15, 2019	<a href="#">Rapid Response report 18</a>
Shin Yang (LPF 0018)	Shin Yang	~105	July 15 – August 15, 2019	<a href="#">Rapid Response report 18</a>
Telliana Enterprise Sdn Bhd	Unknown	~11	July 15 – August 15, 2019	<a href="#">Rapid Response report 18</a>

## Repeat Cases (continued)

Concession license area	Group/ownership	Area covered by screened GLAD alerts (ha)	Time period	Rapid Response reports related to each case
Titanium Management Sdn Bhd (Part 2)	Unknown	~13	July 15 – August 15, 2019	<a href="#">Rapid Response report 18</a>
Trans Kenyaland Sdn Bhd	Tradewinds	~7	July 15 – August 15, 2019	<a href="#">Rapid Response report 18</a>
PT Krida Darma Kahuripan	Unknown (former Makin Group)	~10	July 15 – August 15, 2019	Rapid Response reports <a href="#">5</a> , <a href="#">6</a> , <a href="#">11</a> , <a href="#">12</a> , <a href="#">17</a>
PT Citra Sawit Cemerlang	Genting	~12	July 15 – August 15, 2019	Rapid Response reports <a href="#">14</a> , <a href="#">15</a> , <a href="#">17</a>
PT Permata Sawit Mandiri	Genting	~123	July 15 – August 15, 2019	Rapid Response reports <a href="#">15</a> , <a href="#">17</a>
PT Ichiko Agro Lestari	Unknown	~30	July 15 – August 15, 2019	Rapid Response reports <a href="#">14</a> , <a href="#">17</a>
Samling Reforestation (Bintulu) Sdn Bhd: LPF/0008 Marudi estate	Samling	~13	July 15 – August 15, 2019	Rapid Response reports <a href="#">13</a> , <a href="#">17</a>
PT Marita Makmur Jaya	Unknown	~11	July 15 – August 15, 2019	Rapid Response reports <a href="#">12</a> , <a href="#">17</a>
PT Prasetya Mitra Muda (Block I)	Unknown	~14	July 15 – August 15, 2019	Rapid Response reports <a href="#">6</a> , <a href="#">17</a>
PT Katingan Hijau Lestari	Unknown	~14	July 15 – August 15, 2019	<a href="#">Rapid Response report 17</a>
Koperasi Usaha Mandiri	Unknown	~44	July 15 – August 15, 2019	<a href="#">Rapid Response report 17</a>
Poh Zhen Sdn Bhd	Rimbunan Hijau	~7	July 15 – August 15, 2019	<a href="#">Rapid Response report 17</a>
Southwind Plantation Sdn Bhd	WTK	~12	July 15 – August 15, 2019	<a href="#">Rapid Response report 17</a>
Syarikat Samling Timber Sdn Bhd (LPF 0014)	Samling	~7	July 15 – August 15, 2019	<a href="#">Rapid Response report 17</a>



## Repeat Cases (continued)

Concession license area	Group/ownership	Area covered by screened GLAD alerts (ha)	Time period	Rapid Response reports related to each case
Samling Jelalong LPF 0007 (part 3)	Samling	~6	July 15 – August 15, 2019	Rapid Response reports <a href="#">15</a> , <a href="#">16</a>
Danum Sinar Sdn Bhd	Puncak Niaga	~116	July 15 – August 15, 2019	Rapid Response reports <a href="#">14</a> , <a href="#">16</a>
PT Berau Karetindo Lestari (area 1)	Karyadeka Group/Korompis family	~56	July 15 – August 15, 2019	Rapid Response reports <a href="#">2</a> , <a href="#">16</a>
PT Berau Karetindo Lestari (area 2)	Triputra Agro Persada	~22	July 15 – August 15, 2019	Rapid Response reports <a href="#">2</a> , <a href="#">16</a>
PT Gapura Alas Lestari	Unknown	~22	July 15 – August 15, 2019	Rapid Response report <a href="#">16</a>
PT Malindo Jaya Diraja	Mariya family	~18	July 15 – August 15, 2019	Rapid Response reports <a href="#">13</a> , <a href="#">15</a>
PT Sawit Berkat Sejahtera	Unknown	~16	July 15 – August 15, 2019	<a href="#">Rapid Response report 15</a>