



MIGHTY EARTH

# RAPID RESPONSE

# PALM OIL SECTOR REPORT 58



Prepared with  
support from



July  
2026

---

# Table of Contents



01

PT Tri Bahtera Srikandi  
**(Sago Group)**

---



09

PKPP Plantations  
**(PKPP Group)**

---

## Supply Chain Information

Supply chain information included in Rapid Response reports is based on the latest public versions of mill disclosures, recent export data, and grievance logs. Mighty Earth encourages companies to send updated versions of mill disclosures as soon as they become available and to share any decision to suspend relations with a given group/company with [rapidresponse@mightyearth.org](mailto:rapidresponse@mightyearth.org).



---

# New Case

**Group: Sago Group**

**PT Tri Bahtera Srikandi**

**Concession Location: 1.592258, 98.995184**

Deforestation and/or Peatland Development					
Report	Deforestation (ha)	Forest area Impacted	Peatland Development (ha)	Tree Cover Loss (ha)	Time Period
58	239				January 30, 2025 - January 25, 2026

Planet satellite imagery shows that there were 239 hectares of deforestation in the PT Tri Bahtera Srikandi concession between January 30, 2025 and January 25, 2026.

# Supply Chain Information

Company/Group	Traders	Biofuel/Other	Consumer Brands
PT Tri Bahtera Srikandi (Anggoli mill) PO1000010811	AAK, ADM, Cargill, Fuji Oil, IFFCO, Itochu, KAO, KLK, Louis Dreyfus, Musim Mas, Olam, SD Guthrie, Wilmar	BASF, EFKO Group, Galaxy Surfactants Ltd, Nisshin Oillio, Oleon, Sakamoto Yakuhi Kogyo, WF	Barry Callebaut, Beiersdorf, Colgate Palmolive, Friesland Campina, General Mills, Grupo Bimbo, Kellogg, Lion Corporation, Meiji Group, Mondelez, Nestle, Nissin Foods, PepsiCo, P&G, PZ Cussons, Vandemoortele
PT Tri Bahtera Srikandi (Patiluban Mudik) PO1000008234	AAK, ADM, Apical, Bunge, Cargill, COFCO, Fuji Oil, IFFCO, KAO, Louis Dreyfus, Musim Mas, Olam, Pacific Inter-Link, SD Guthrie, Wilmar	BASF, EFKO Group, Galaxy Surfactants Ltd, Indorama, Neste, Nisshin Oillio, Oleon, Sakamoto Yakuhi Kogyo, WF	Barry Callebaut, Colgate Palmolive, Friesland Campina, General Mills, Grupo Bimbo, Kellogg, Lion Corporation, Meiji Group, Mondelez, Nestle, Nissin Foods, PepsiCo, P&G, PZ Cussons
PT Tri Bahtera Srikandi (Sago Nauli) PO1000004386	AAK, ADM, Apical, Bunge, Cargill, COFCO, Fuji Oil, IFFCO, Itochu, KAO, KLK, Louis Dreyfus, Musim Mas, Olam, Pacific Inter-Link, SD Guthrie, Wilmar	BASF, EEFKO Group, Galaxy Surfactants Ltd, Indorama, Neste, Nisshin Oillio, Oleon, Sakamoto Yakuhi Kogyo, Sinarmas Cepesa, VVF	Barry Callebaut, Colgate Palmolive, Friesland Campina, General Mills, Grupo Bimbo, Kellogg, Lion Corporation, Meiji Group, Nestle, Nissin Foods, PepsiCo, P&G, PZ Cussons, Mondelez
<b>Sago Group</b>	AAK, ADM, Apical, Bunge, Cargill, COFCO, Fuji Oil, IFFCO, Itochu, KAO, KLK, Louis Dreyfus, Musim Mas, Olam, Pacific Inter-Link, SD Guthrie, Wilmar	BASF, EEFKO Group, Galaxy Surfactants Ltd, Indorama, Neste, Nisshin Oillio, Oleon, Sakamoto Yakuhi Kogyo, Sinarmas Cepesa, VVF	Barry Callebaut, Beiersdorf, Colgate Palmolive, Friesland Campina, General Mills, Grupo Bimbo, Johnson & Johnson, Kellogg, Lion Corporation, Meiji Group, Mondelez, Nestle, Nissin Foods, PepsiCo, P&G, PZ Cussons, Vandemoortele



---

# Case Notes and Evidence

## Ownership Structure

PT Sago Nauli (Sago Group) was founded by palm oil tycoon Ignasius Sago and is currently owned by members of the Sago family.

Sago Group owns the PT Tri Bahtera Srikandi (Anggoli) mill (palm oil ID: PO1000010811) and an oil palm concession located in Batang Toru watershed, Central Tapanuli, North Sumatra.

According to various palm oil traders' mill lists, the Sago Group also owns the mills: Sago Nauli Sinunukan (PO1000004387), Patiluban Mudik (PO1000008234) and Sago Nauli (PO1000004386).

## NDPE Policies and Actions

No Integrated HCV-HCS Assessment could not be found for any of the PT Tri Bahtera Srikandi concessions on the HCVRN or HCSA websites.

# Case Notes and Evidence

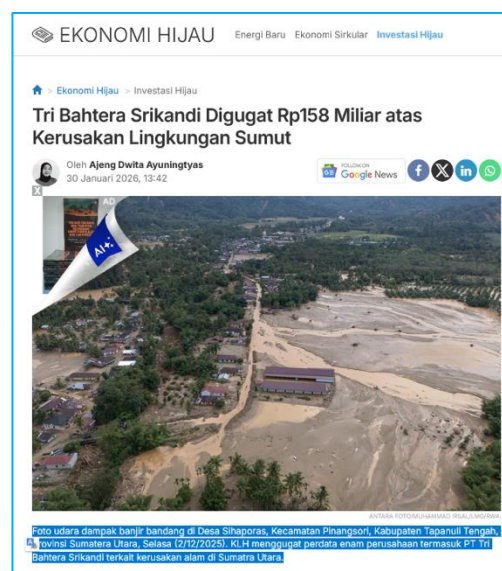
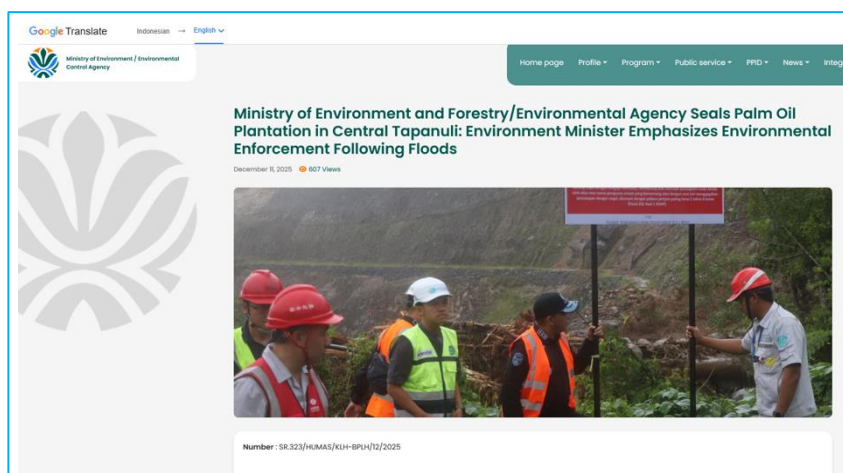
## Background

In December 2025, the Indonesian Ministry of Environment and Forestry [issued a statement](#) declaring that it had '**sealed and installed monitoring signs in the operational area of the palm oil plantation and mill of PT Tri Bahtera Srikandi (PT TBS)**, a subsidiary of PT Sago Nauli Plantation (PT SNP) in Central Tapanuli, North Sumatra, as a rapid follow-up to the flooding in Sumatra. This step was taken to temporarily halt operations that could potentially worsen hydrological conditions and ensure compliance with environmental regulations for the safety of the community and ecosystem recovery.'

The palm oil mill of PT Tri Bahtera Srikandi (PT TBS) is SAGO Group's Anggoli palm oil mill (ID: PO1000010811) located in Central Tapanuli, which sells to many palm oil traders, refiners and downstream consumer brand companies.

The Ministry of Environment and Forestry statement continues: '*The Ministry of Environment and Forestry/Environmental Impact Assessment (KLH/BPLH) monitoring team conducted field verification and identified indications of land management practices requiring clarification. Based on these initial findings, the Ministry/BPLH installed monitoring signs and sealed off PT TBS's operational area to halt risky activities until environmental information and documents were verified.*'

On January 30, 2026, [Katadata.co.id](#) reported: '*The Ministry of Environment sued PT Tri Bahtera Srikandi in the Medan District Court, demanding strict liability and payment of compensation worth Rp. 158,602,013,918 [US \$8,861,437] which includes ecological, economic, sedimentation, run-off, and verification costs. **The court was asked to order the company to restore the land of 277.24 ha in Anggoli Village**, including annual supervision and monitoring, with a three-year deadline and a fine of 6% per year for late payment.*'



# Case Notes and Evidence

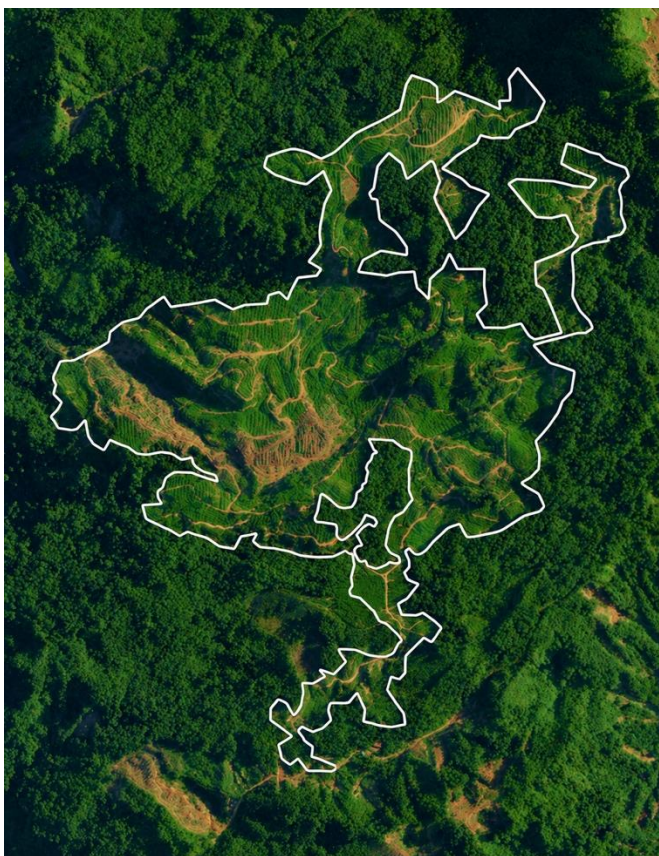
## Background

Satellite analysis shows land clearing and oil palm development 5-6 kilometres due north of the Anggoli palm oil mill. There was a total of 239 hectares of deforestation between January 4, 2024 and April 29, 2026.

Planet Scope: Nov 11, 2025



Planet Sky Sat: May 26, 2026



The Planet satellite image on the left shows the location of the mill in the left-hand corner (red circle) and recent land clearing marked in white

The high-resolution Planet satellite image on the right shows parts of the areas which are planted with oil palm.

A Mighty Earth investigation has identified that the deforestation and oil palm development highlighted takes place in the same area of PT Tri Bahtera Srikandi that was 'sealed off' by the Ministry of Environment and Forestry, as mentioned on the previous page.

Given the above, Mighty Earth is submitting this case as a grievance to companies sourcing from the Sago Group, which owns PT Tri Bahtera Srikandi and the Anggoli mill.

# Mapping Analysis

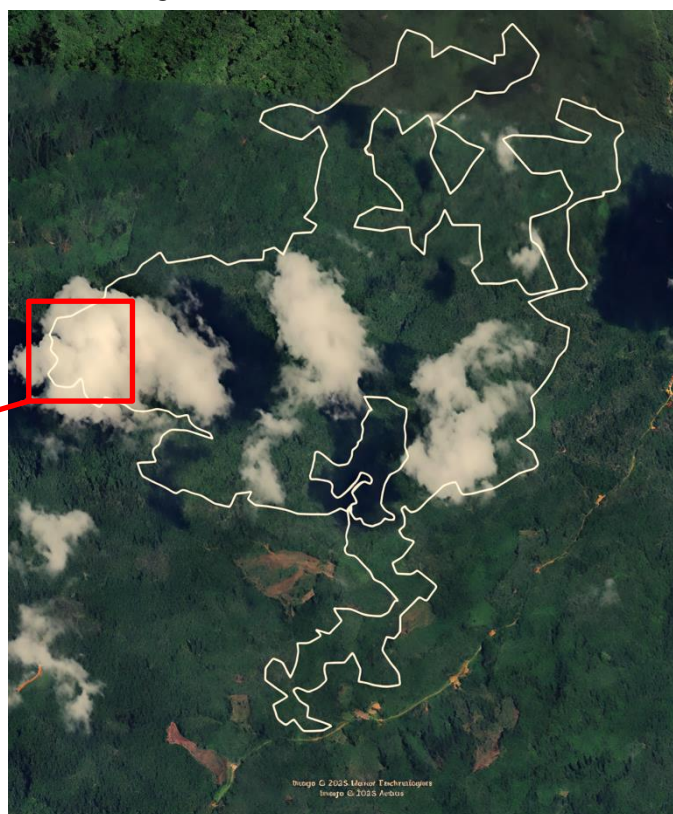
The high-resolution Airbus image (January 2024) on the right shows the tree canopy cover of the landscape and area to be cleared in the area highlighted in this report. Coordinates: 1.592258, 98.995184.

The high-resolution Bing satellite image on the left shows the tree canopy cover in the most western area before the area was cleared. Coordinates: 1.590676, 98.984946.

Bing image: Pre-Sept 2025



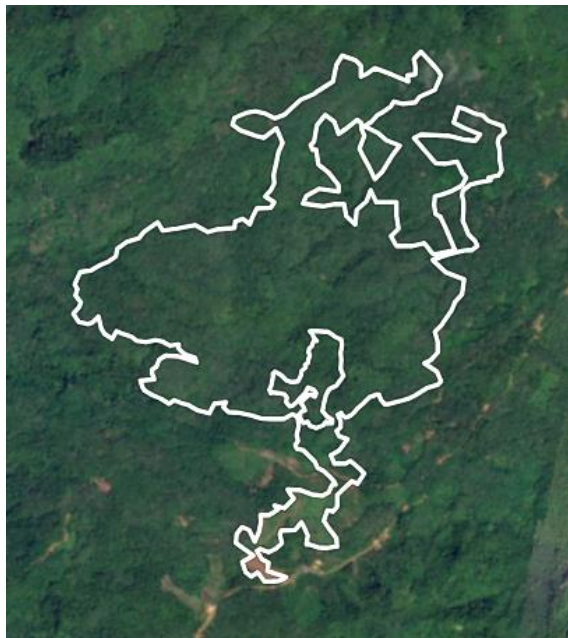
Airbus image: Jan 2024



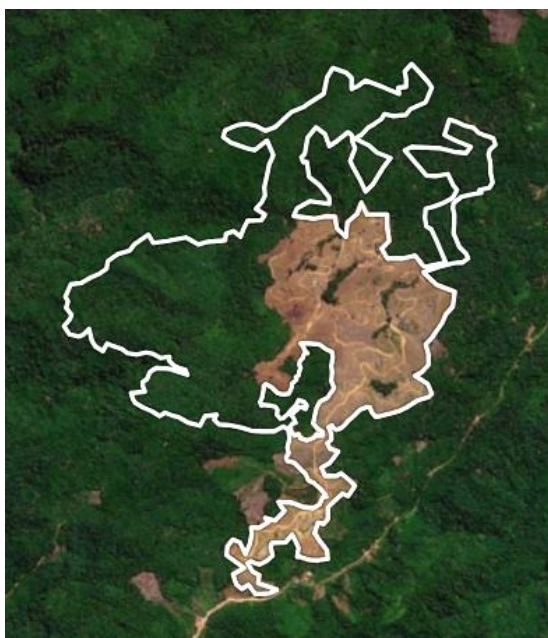
# Mapping Analysis

The series of Planet satellite images below show the progression of deforestation and conversion to oil palm between January 30, 2025 and January 25, 2026. Coordinates: 1.592258, 98.995184.

**Planet Scope image: Jan 30, 2025**



**Planet Scope image: June 3, 2025**



**Planet Scope image: Sept 11, 2025**



**Planet Scope image: Jan 25, 2026**



---

# Mapping Analysis

The high-resolution Planet satellite image below (May 26, 2026) shows the tree canopy cover in between two areas already converted to oil palm. Coordinates: 1.592258, 99.000886.

**Planet Scope image: May 26, 2026**



# New Case

**Group: Perbadanan Kemajuan Pertanian Negari Pahang, PKPP  
PKPP Plantation Sdn Bhd**

**Concession Location: See mapping analysis below**

Deforestation and/or Peatland Development					
Report	Deforestation (ha)	Forest Conservation Areas Impacted	Peatland Development (ha)	Tree Cover Loss (ha)	Time Period
31	22				March 3, 2019 – October 27, 2020
58		6			March 13, 2024 – March 3, 2026

[PKPP Plantations website](#) promotes 6 'Forest Conservation Areas' owned by Pahang Agricultural Development Corporation' (PKPP) in the Cherating concession. The total area of the 6 'Forest Conservation Areas' is 60.9 hectares.

The mapping analysis on the following pages identifies that 4 out of 6 'Forest Conservation Areas' have been cleared since May 2022, with one of the areas cleared as recently as 2026.

# Supply Chain Information

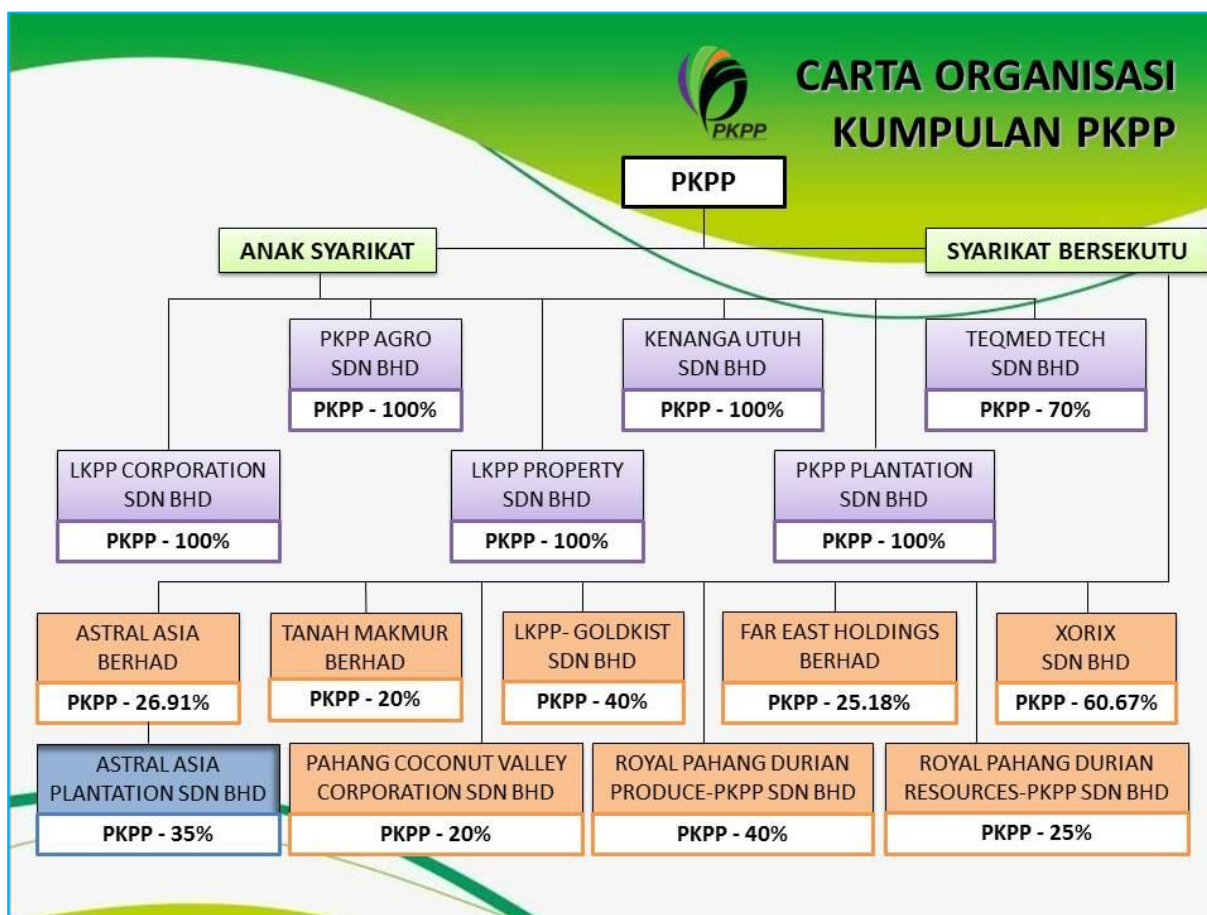
Company/Group	Traders	Biofuel/Other	Consumer Brands
<b>PKPP Plantation Sdn Bhd</b>	n/a	n/a	n/a
<b>LKPP Corporation Sdn Bhd</b>	ADM, Bunge, Cargill, Fuji Oil, IFFCO, IOI, Itochu, KLK, Mewah, Mitsui, Musim Mas, Olam, SD Guthrie, Wilmar	Galaxy Surfactants Ltd, Indorama, ISFSB, KAO, Lipsa, Nisshin Oillio, Nissin Foods, Oleon	Colgate Palmolive, Flora Food Group, Friesland Campina, General Mills, Grupo Bimbo, Johnson & Johnson, Kellogg, Lion Corporation, Mondelez, Nestle, PepsiCo, PZ Cussons, Vandemoortele



# Case Notes and Evidence

## Ownership Structure

As shown by the [PKPP Group corporate diagram](#) below, PKPP Plantation Sdn Bhd and LKPP Corporation Sdn Bhd (LKPP) are both wholly owned by Perbadanan Kemajuan Pertanian Negeri Pahang (PKPP), the Pahang State Agricultural Development Corporation.



---

# Case Notes and Evidence

## NDPE Policies and Actions

In 2020 Mighty Earth published [Rapid Response 30](#) on deforestation in the PKPP Plantations (Cherating) concession located in Pahang, Malaysia.

Wilmar's grievance log on the case states that the company 'established direct engagement with PKPP Plantation Sdn Bhd to seek their clarification on the alleged deforestation. While the case is still undergoing investigation in verifying the allegation, PKPP Plantation Sdn Bhd has committed to cease any new clearing and published a NDPE commitment.'

The PKPP's NDPE policy can be found at: <https://ndpe.pkpp.gov.my/>. It states, for example, 'As one of the many companies that own palm oil plantations, palm oil mills, palm oil refineries, we have launched and used the NDPE Policy in each palm oil plantation to save and protect biological diversity and also no exploitation towards sustainable development.'

As shown by the PKPP Group corporate diagram on the previous page, PKPP Plantation Sdn Bhd and LKPP Corporation Sdn Bhd (LKPP) are both wholly owned by Perbadanan Kemajuan Pertanian Negeri Pahang (PKPP), the Pahang State Agricultural Development Corporation.

LKPP palm oil mills are included in many trader's supply chains including ADM, Bunge, Cargill, Fuji Oil, IFFCO, IOI, KLK, LDC, Mewah, Musim Mas, SD Guthrie and Wilmar.

Given that PKPP is the Parent Group of PKPP Plantations and LKPP, a group-wide NDPE policy by these traders would require grievance action to be taken on PKPP's NDPE non-compliance.

**Note: This individual case was sent out to the traders listed above on May 18, 2026.**

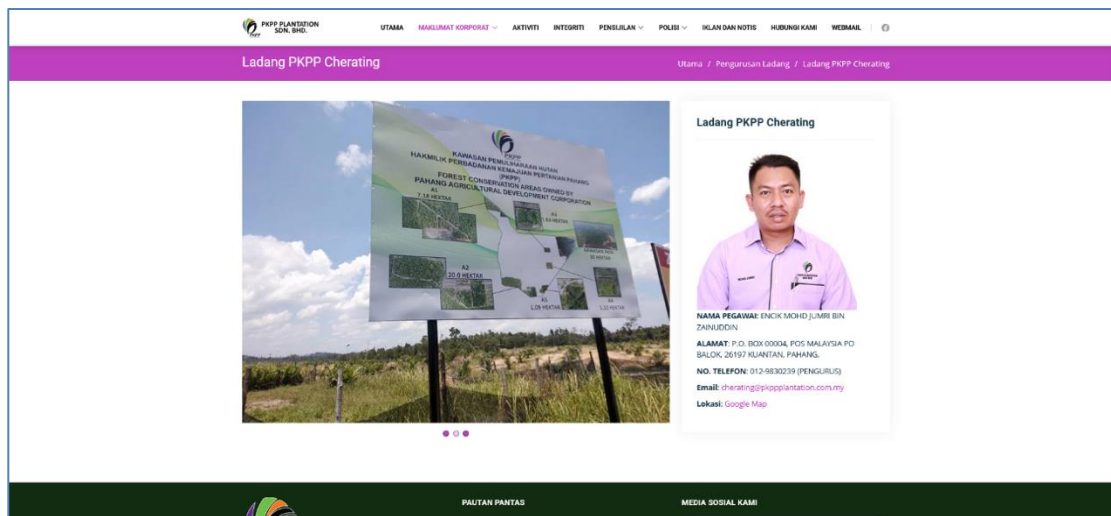
Initial responses state that the PKPP/LKPP group has '*confirmed that land clearing activities were carried out for the purpose of oil palm development.*'

# Mapping Analysis

## PKPP 'Forest Conservation Areas' cleared since May 2022

[PKPP Plantations website](#) promotes 6 'Forest Conservation Areas' owned by Pahang Agricultural Development Corporation' (PKPP) in the Cherating concession. The total area of the 6 areas is 60.9 hectares. See screengrabs on the following pages.

However, the mapping analysis on the following pages identifies that 4 out of 6 'Forest Conservation Areas' have been cleared since May 2022, with one of the areas cleared as recently as early 2026.

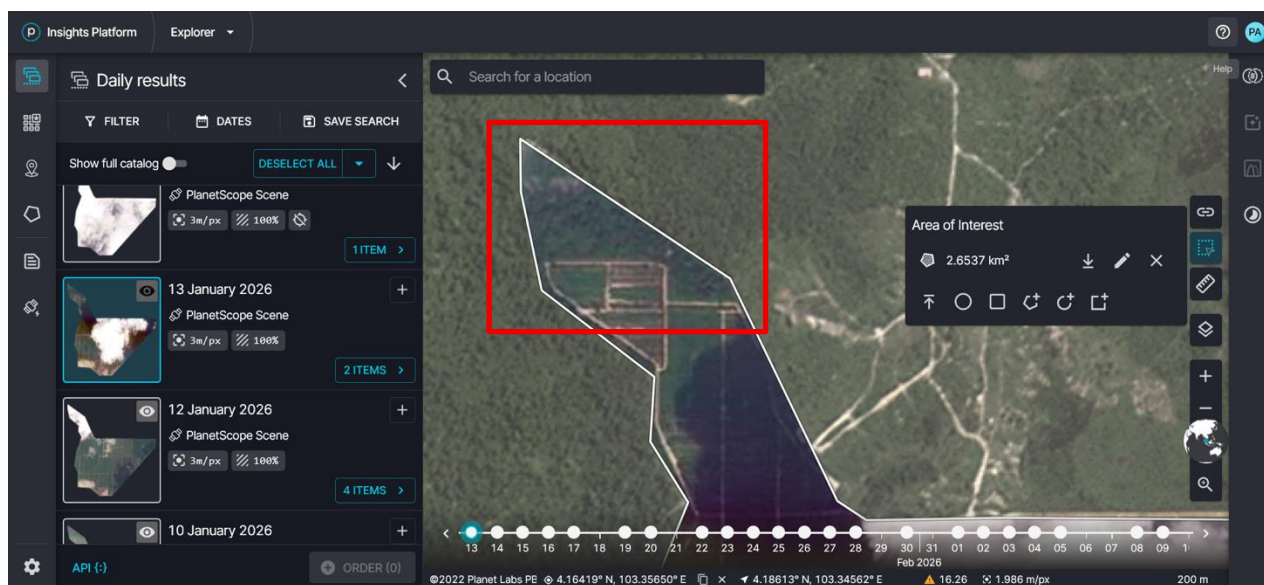


# Mapping Analysis

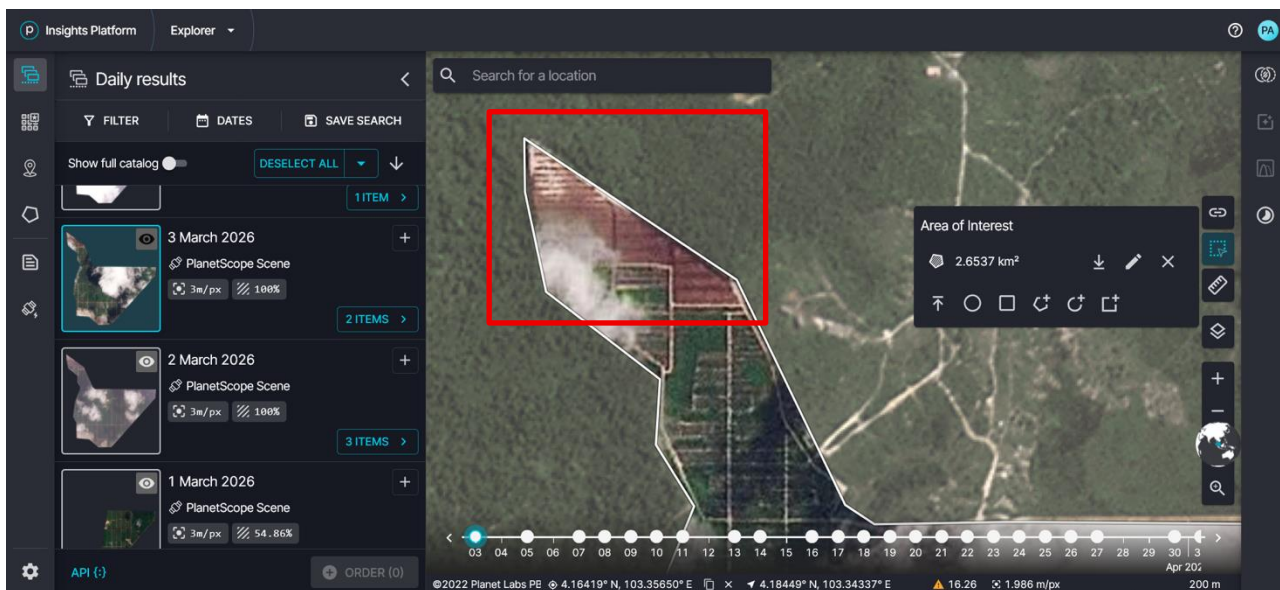
## Forest Conservation Area: A1 (7.18 hectares)

Coords: 4.18273, 103.33942

Planet Scope image: January 13, 2026



Planet Scope image: March 3, 2026

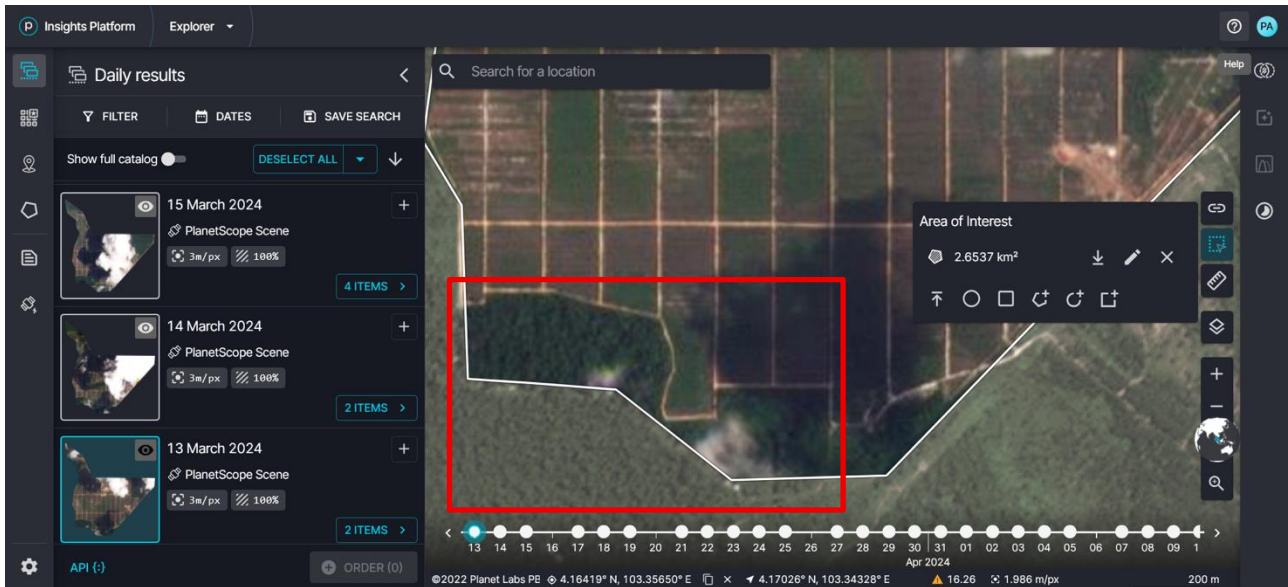


# Mapping Analysis

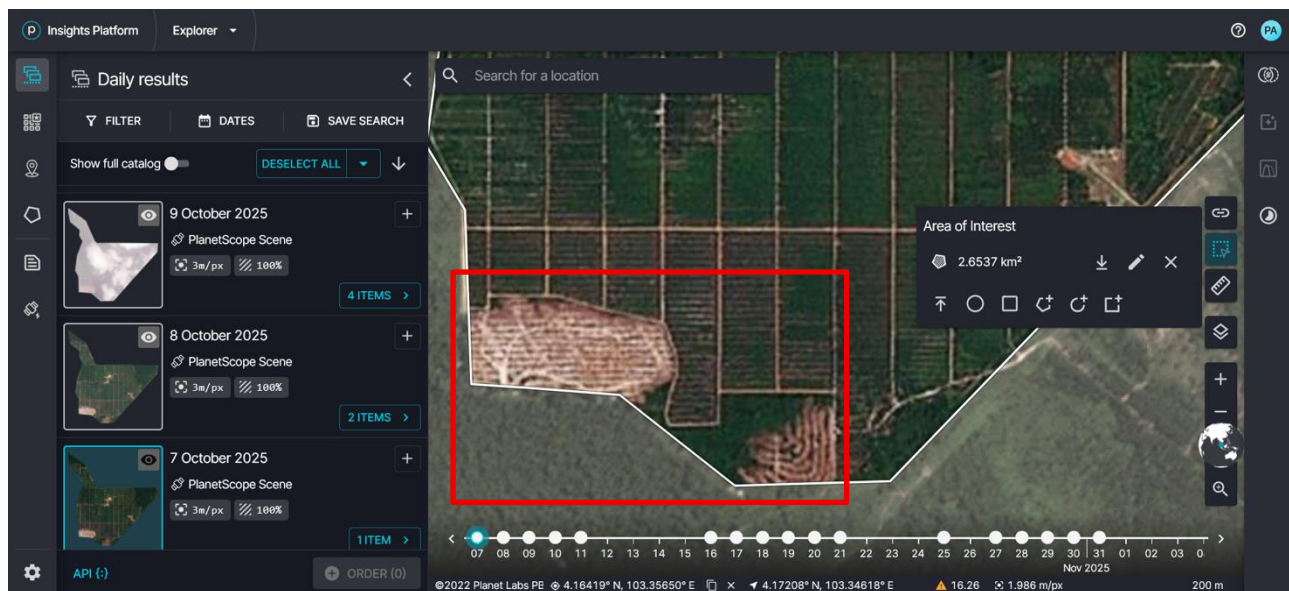
## Forest Conservation Area: A2 (20 hectares)

Coords: 4.16604, 103.34256 & 4.16403, 103.34697

Planet Scope image: March 13, 2024



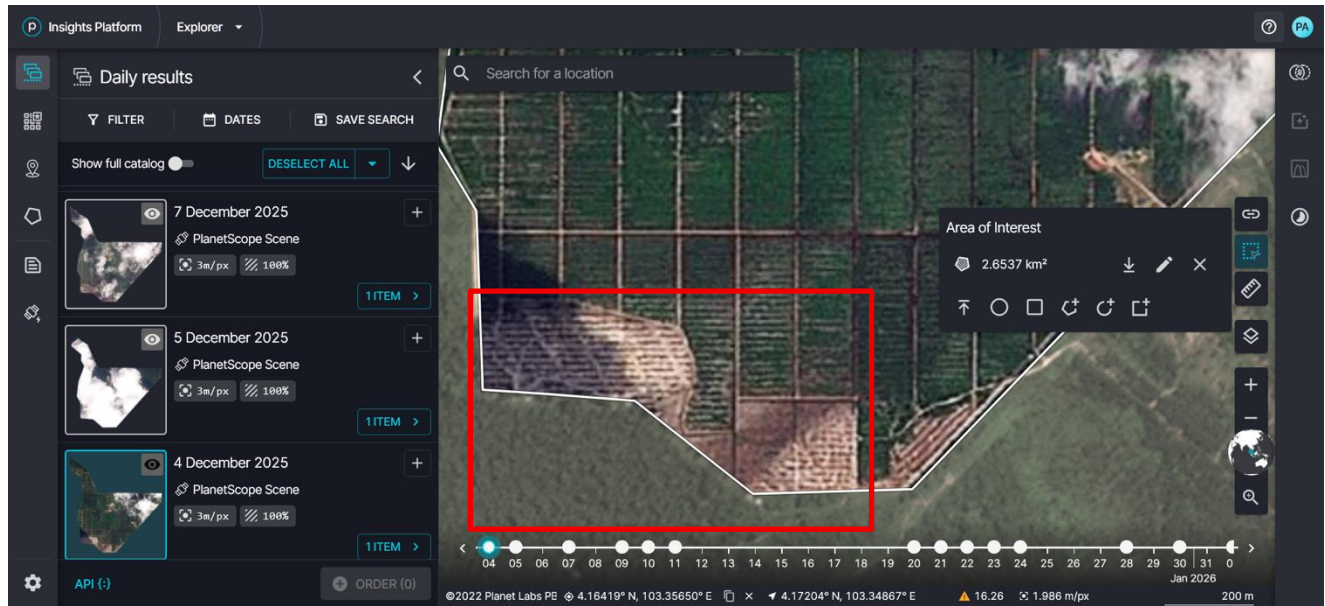
Planet Scope image: October 7, 2025



# Mapping Analysis

## Forest Conservation Area: A2 (20 hectares) (cont'd)

Planet Scope image: December 4, 2025

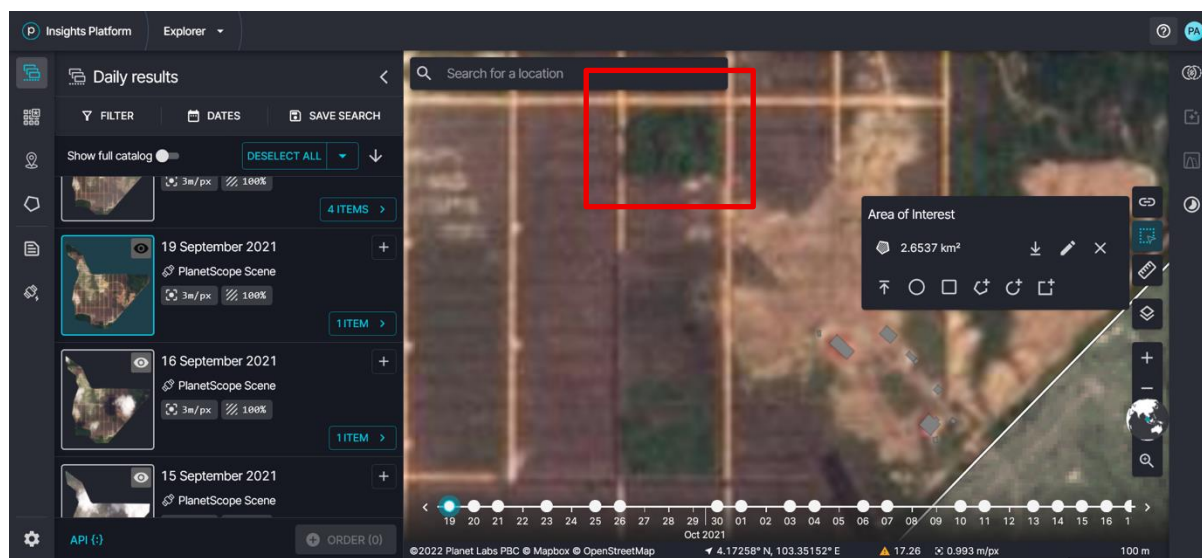


# Mapping Analysis

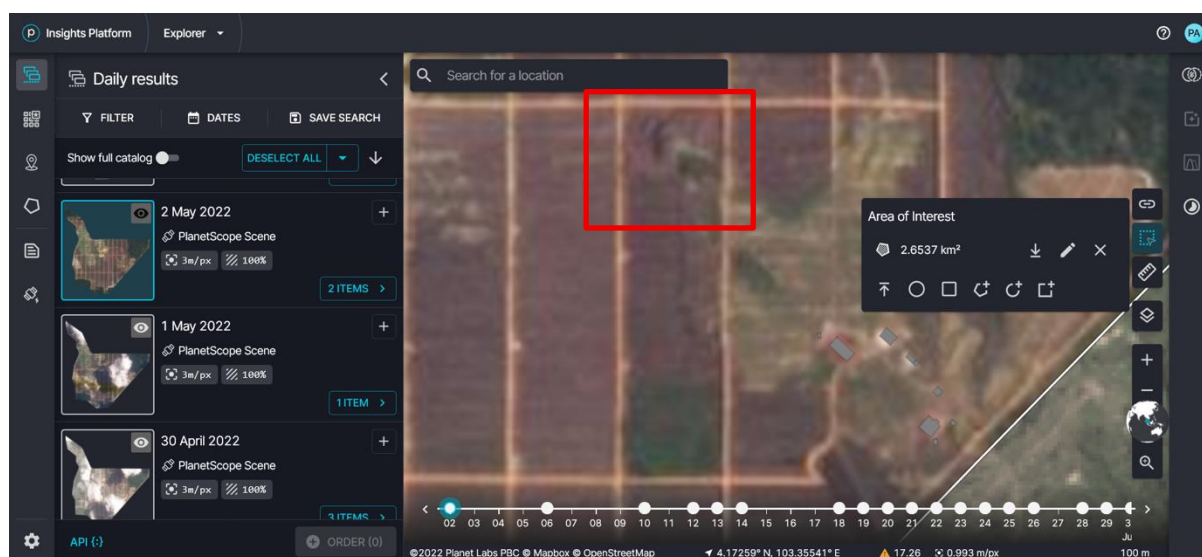
## Forest Conservation Area: A3 (1.63 hectares)

Coords: 4.17200, 103.35126

Planet Scope image: September 19, 2021



Planet Scope image: May 2, 2022

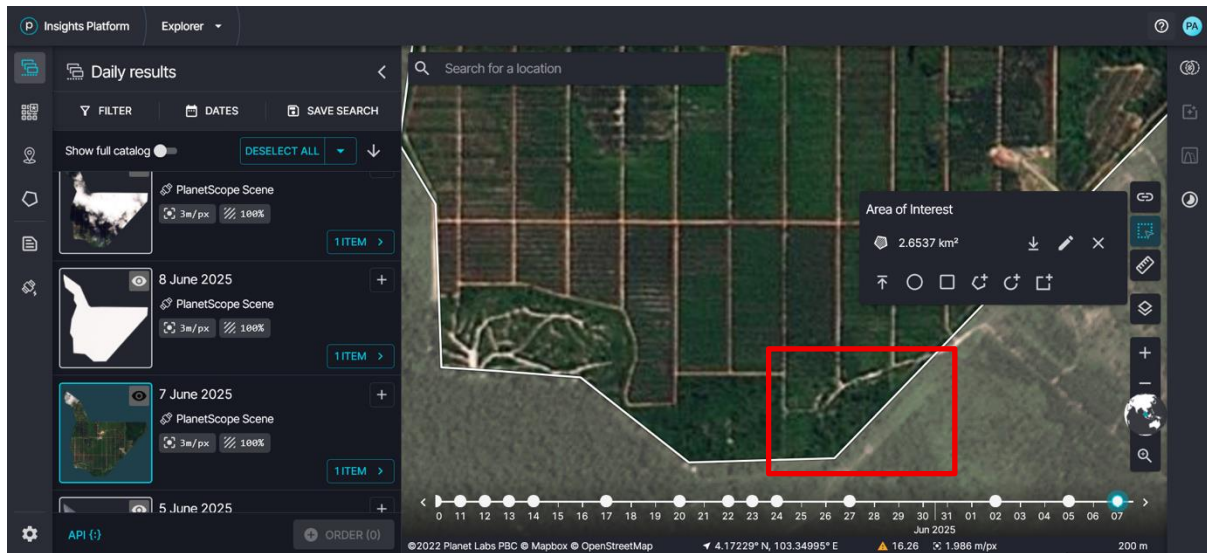


# Mapping Analysis

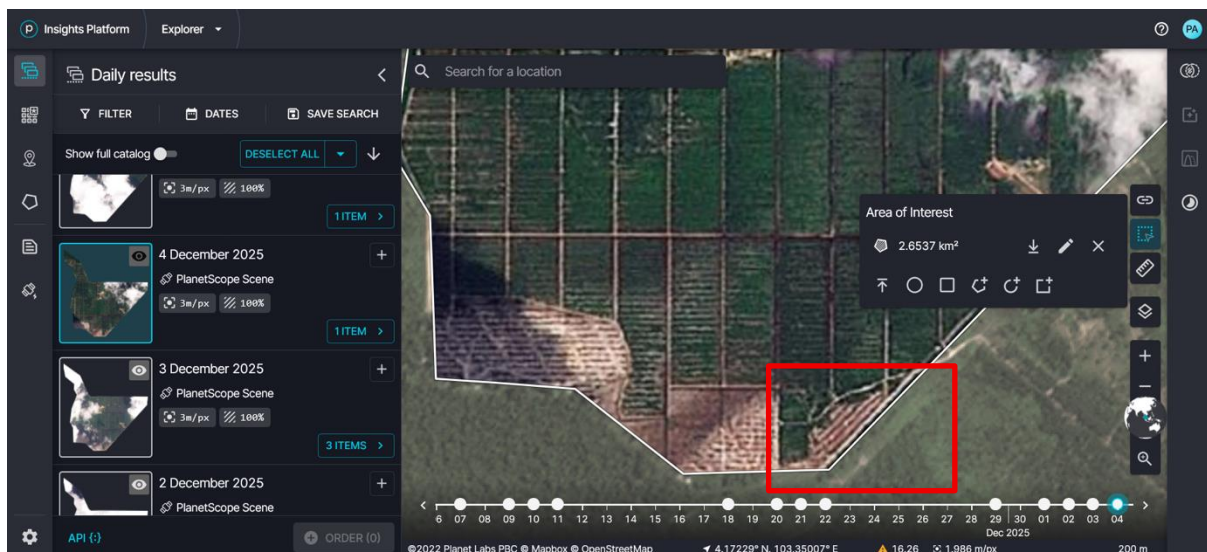
## Forest Conservation Area: A5 (1.09 hectares)

Coords: 4.16426, 103.34977

Planet Scope image: June 7, 2025



Planet Scope image: December 4, 2025





Follow Us: [LinkedIn](#) | [Twitter](#) | [Instagram](#)

---

1701 Rhode Island Avenue NW | Suite 3-123 | Washington, DC | 20036  
[www.mightyearth.org](http://www.mightyearth.org)