



MIGHTY EARTH

RAPID RESPONSE

PALM OIL SECTOR REPORT 57



Prepared with
support from



May
2026

Table of Contents



01

PT Surya Panen Subur
(Unknown Group)



05

PT Nusamas Griya Lestari
(Citadel Investment Corporation)



12

PT Borneo Bhakti Sejahtera
(FAP Agri)

Supply Chain Information

Supply chain information included in Rapid Response reports is based on the latest public versions of mill disclosures, recent export data, and grievance logs. Mighty Earth encourages companies to send updated versions of mill disclosures as soon as they become available and to share any decision to suspend relations with a given group/company with rapidresponse@mightyearth.org.



New Case

Group: Unknown Group

PT Surya Panen Suber

Clearance Locations: 3.830701, 96.425617 (west) & 3.772457, 96.532227 (east)

Deforestation and/or Peatland Development					
Report	Deforestation (ha)	Forest area Impacted	Peatland Development (ha)	Tree Cover Loss (ha)	Time Period
57			451 (western section)		October 23, 2023 - April 23, 2026
			108 (eastern section)		December 18, 2024 - April 23, 2026

Planet satellite imagery shows that there were 559 hectares of peatland development between October 23, 2023 and April 23, 2026 in the PT Surya Panen Subur concession.

Supply Chain Information

Company/Group	Traders	Biofuel/Other	Consumer Brands
PT Surya Panen Subur (PO1000004299)	Olam, LDC, Pacific Inter-Link	Nisshin Oillio, Oleon	Grupo Bimbo, PZ Cussons



Case Notes and Evidence

Ownership Structure

PT Surya Panen Suber is ultimately owned by PT Global Artha Sangkara which is owned by a number of holding companies. The holding companies are in turn by different Indonesian citizens. PT Surya Panen Suber could not be linked to a group based on research and analysis of company ownership.

PT Surya Panen Suber has a palm oil mill in its concession area (Mill ID PO1000004299).

NDPE Policies and Actions

No Integrated HCV-HCS Assessment could be found on the HCVRN or HCSA websites for the PT Nusamas Griya Lestari concession.

Mapping Analysis

The series of Planet satellite images below show the progression of peatland development in the western section of the PT Surya Panen Subur concession (HGU boundary) between October 23, 2023 and April 23, 2026. Coordinates: 3.830701, 96.425617.

Planet Image: October 23, 2023



Planet Image: August 14, 2024



Planet Image: August 14, 2025



Planet Image: April 23, 2026



Mapping Analysis

The series of Planet satellite images below shows the progression of the 108 ha of peatland development in the eastern section of PT Surya Panen Subur (within its HGU concession boundary) between December 18, 2024 and April 23, 2026. Central coordinates: 3.772457, 96.532227.

Planet Image: December 18, 2024



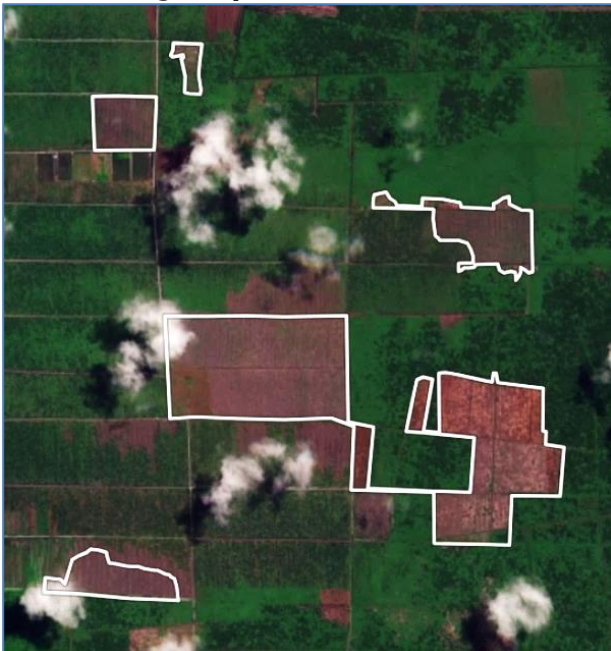
Planet Image: July 29, 2025



Planet Image: December 20, 2025



Planet Image: April 23, 2026



New Case

Group: Citadel Investment Corporation

PT Nusamas Griya Lestari

Concession Location: -1.863249, 120.995743

Deforestation and/or Peatland Development					
Report	Deforestation (ha)	Forest area Impacted	Peatland Development (ha)	Tree Cover Loss (ha)	Time Period
57	90				January 4, 2024 - April 29, 2026

Planet satellite imagery shows that there were 90 hectares of deforestation between January 4, 2024 and April 29, 2026 in the PT Nusamas Griya Lestari concession.

Supply Chain Information

Company/Group	Traders	Biofuel/Other	Consumer Brands
PT Nusamas Griya Lestari	n/a	n/a	n/a
Citadel Investment Corporation (through Timurjaya Indomakmur: PO1000008185)	ADM, IFFCO, KAO	BASF, Galaxy Surfactants Ltd, Indorama, Nisshin Oillio, Oleon	Meiji, General Mills, Lion, PZ Cussons, Mondelez, Barry Callebaut, Nestle, Pepsi Co, Kellogg,



Case Notes and Evidence

Ownership Structure

PT Nusamas Griya Lestari is owned by PT Duta Permata Unggul, which owns the PT Timurjaya Indomakmur concession and a palm oil mill (PO1000008185).

NDPE Policies and Actions

No Integrated HCV-HCS Assessment could not be found for the PT Nusamas Griya Lestari concession on the HCVRN or HCSA websites.

Mapping Analysis

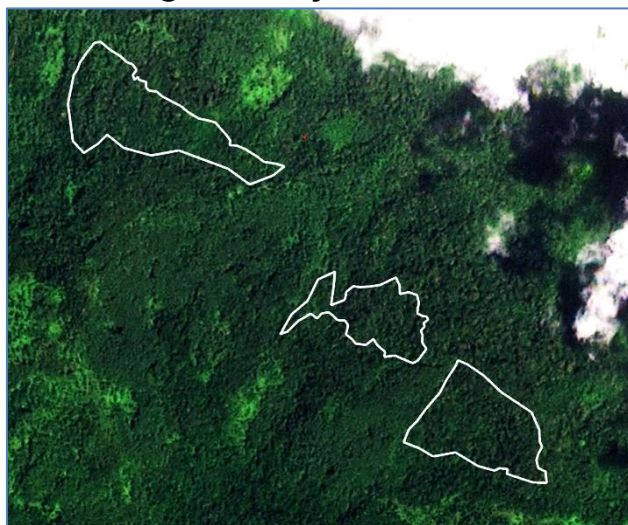
Area 1: Northwest Section

The series of Planet satellite images below shows deforestation in the northwest section of the PT Nusamas Griya Lestari concession between January 4, 2024 and April 29, 2026. Coordinates: -1.865194, 120.920735.

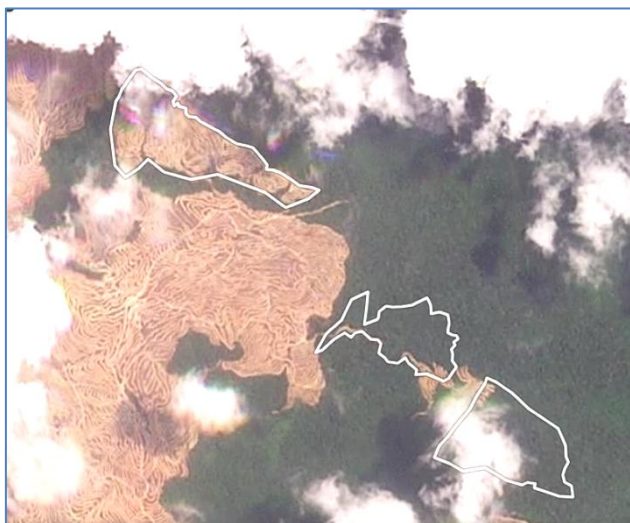
Maxar High Resolution Image: Aug 2020



Planet Image: January 4, 2024



Planet Image: September 18, 2025



Planet Image: April 29, 2026



Mapping Analysis

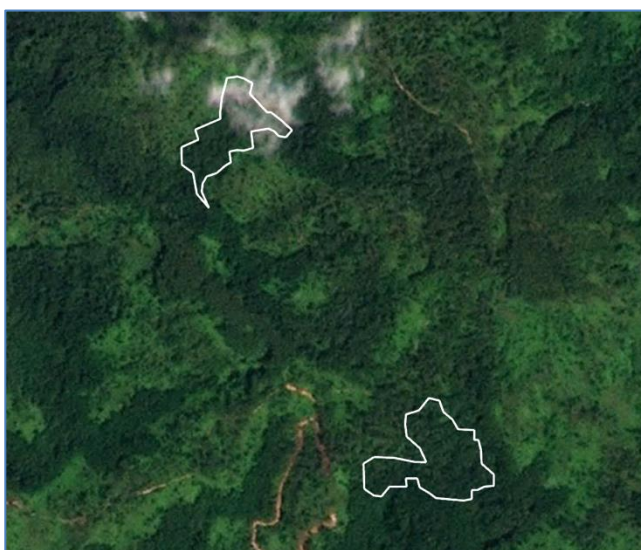
Area 2: West Central Section

The series of Planet satellite images below shows the progression of deforestation in the west central section of the PT Nusamas Griya Lestari concession between January 4, 2024 and April 29, 2026. Coordinates: -1.890821, 120.946596.

Maxar High Resolution Image: Aug 2020



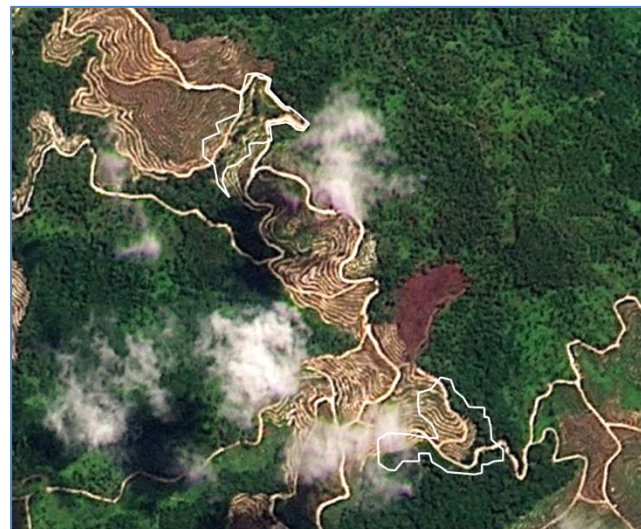
Planet Image: January 4, 2024



Airbus Image: September 2025



Planet Image: April 29, 2026

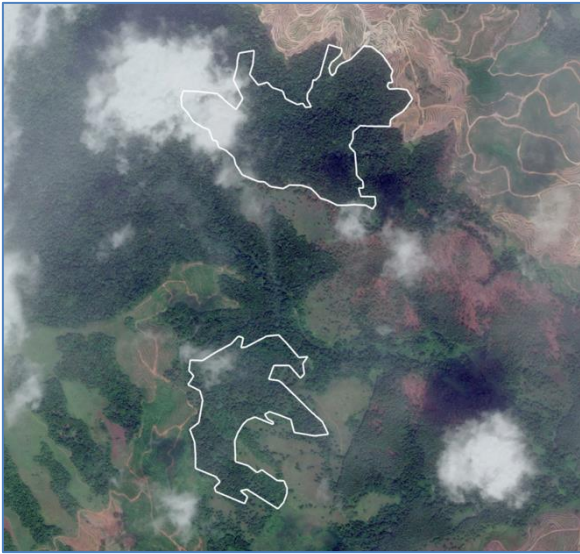


Mapping Analysis

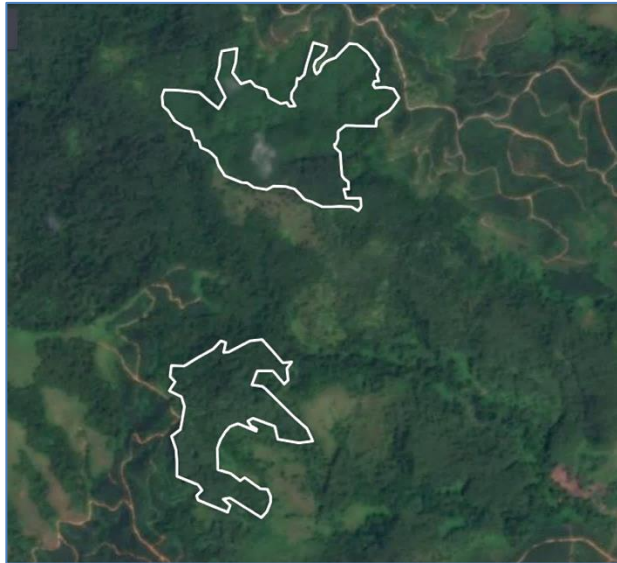
Area 3: Northeast Section

The series of Planet satellite images below shows the progression of deforestation in the northeast section of the PT Nusamas Griya Lestari concession between January 4, 2024 and April 29, 2026. Coordinates: -1.853668, 120.998388.

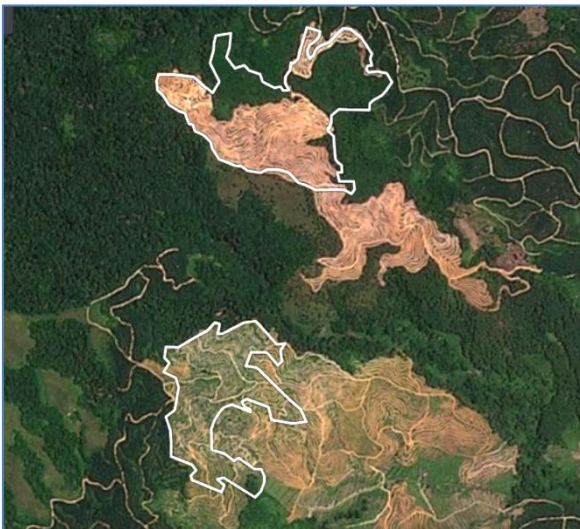
Maxar High Res Image: Aug 2020



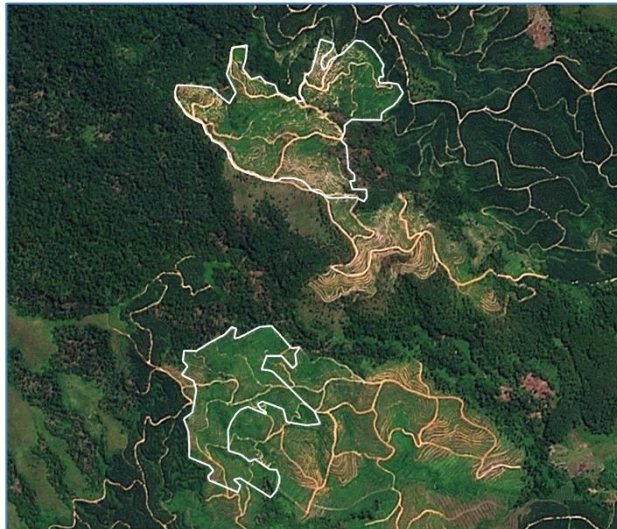
Planet Image: January 4, 2024



Planet Image: September 18, 2025



Planet Image: April 29, 2026



New Case

Group: FAP Agri

PT Borneo Bhakti Sejahtera

Concession and Clearance Location: 0.481852, 115.374204

Deforestation and/or Peatland Development					
Report	Deforestation (ha)	Forest area Impacted	Peatland Development (ha)	Tree Cover Loss (ha)	Time Period
57	58				March 24, 2025 - May 9, 2026

Planet satellite imagery shows that there were 58 hectares of deforestation between March 24, 2025 and May 9, 2026 in the PT Borneo Bhakti Sejahtera concession.

Supply Chain Information

Company/Group	Traders	Biofuel/Other	Consumer Brands
PT Borneo Bhakti Sejahtera (PO1000011307)	ADM, Bunge, Cargill, First Resources, Fuji Oil, GAR, IFFCO, KLK, Olam, SD Guthrie, Wilmar	Neste, Oleon	Barry Callebaut, Grupo Bimbo, General Mills, Lion, Hershey, Kellanova, Mondelez, Nestle, Nissin Foods, Pepsico, PZ Cussons
FAP Agri	ADM, Bunge, First Resources, Fuji Oil, KLK, Olam, SD Guthrie	n/a	Barry Callebaut, Flora Food Group, Hershey, Kellogg, Lion Corporation, Mondelez, PepsiCo, PZ Cussons



Case Notes and Evidence

Ownership Structure

PT Borneo Bhakti Sejahtera is part of the FAP Agri Group.

According to a March 2026 Bloomberg article, *'PT FAP Agri Tbk (FAPA), a palm oil producer backed by the Fangiono family, became a focal point of intense scrutiny regarding its ownership structure, which in turn contributed to one of Indonesia's largest foreign stock outflows in over 20 years.'*

The [largest shareholder](#) of FAP Agri is currently PT Prinsep Indo Hld (79.31%), which is majority held by Prinsep Enterprises Private Limited (an offshore company). The 2nd largest shareholder is PT Fangionoperkasa Sejati (6.98%), of which Wirastuty Fangiono is named as the Commissioner and Ciliandrew Fangiono is named as a Director.

NDPE Policies and Actions

FAP Agri's [Sustainability Policy](#) states that the group has an NDPE policy, which states the *'clearing of forests or development of new land as High Conservation Value (HCV) areas or High Carbon Stock (HCS) areas is prohibited.'*

No Integrated HCV-HCS Assessment could be found for PT Borneo Bhakti Sejahtera on the HCVRN or HCSA websites.

Mapping Analysis

The Planet satellite images below show deforestation in the PT Borneo Bhakti Sejahtera concession between March 24, 2025 and May 9, 2026. Coordinates: 0.481852, 115.374204.

Planet Image: March 24, 2025



Planet Image: May 9, 2026



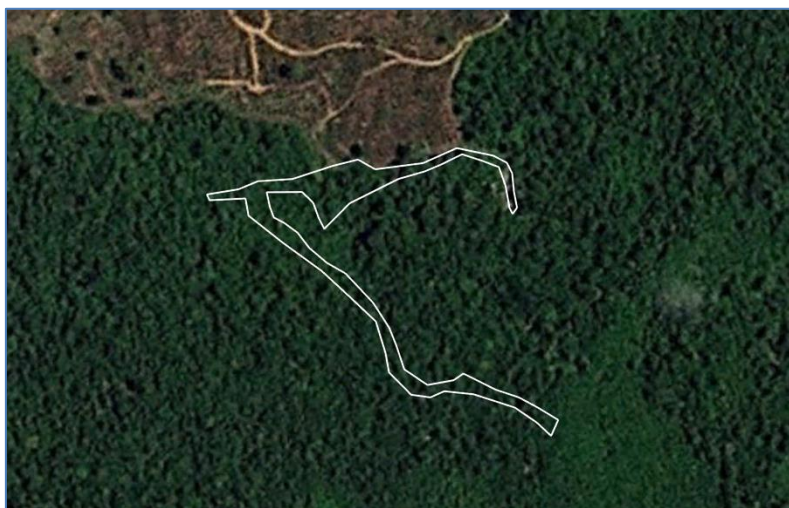
The high-resolution Planet image (50cm) to the right shows the forest canopy of the areas being cleared between April and May of 2026. Coordinates: 0.478554, 115.373613.



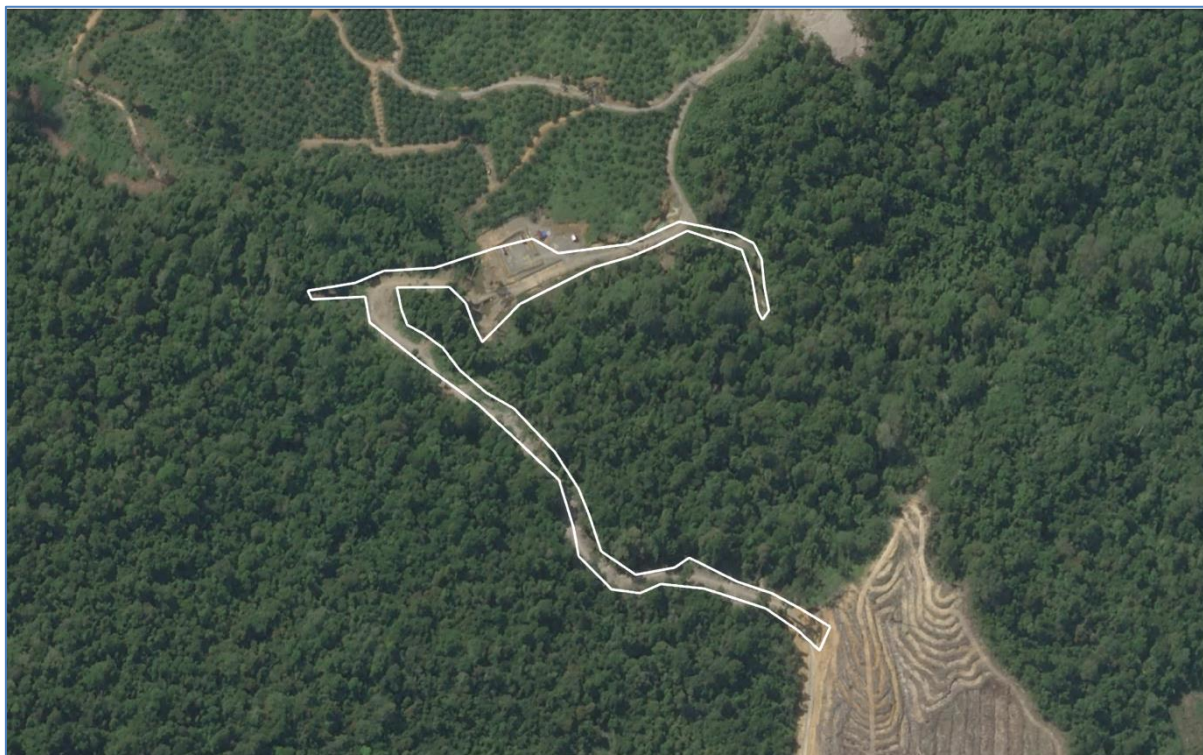
Mapping Analysis

The Planet satellite images below show that a road and related infrastructure was constructed through an area of forest between March 24, 2025 and May 9, 2026 to connect 2 areas of established oil palm plantations in the PT Borneo Bhakti Sejahtera concession. Coordinates: 0.506351, 115.307656.

Planet Image: March 24, 2025



High resolution Planet Image: May 9, 2026





Follow Us: [LinkedIn](#) | [Twitter](#) | [Instagram](#)

1701 Rhode Island Avenue NW | Suite 3-123 | Washington, DC | 20036
www.mightyearth.org