



MIGHTY EARTH

# RAPID RESPONSE

# PALM OIL SECTOR REPORT 56



Prepared with  
support from



April  
2026

---

# Table of Contents



01

PT Bumi Agro Makmur  
**(KSP Agro)**



05

PT Hardaya Inti Plantations  
**(Hardaya Group)**



11

PT Saraswanti Sawit Makmur  
**(Saraswanti Group)**



16

PT Kalimantan Hamparan Sawit  
**(ABM Group)**

---

## Supply Chain Information

Supply chain information included in Rapid Response reports is based on the latest public versions of mill disclosures, recent export data, and grievance logs. Mighty Earth encourages companies to send updated versions of mill disclosures as soon as they become available and to share any decision to suspend relations with a given group/company with [rapidresponse@mightyearth.org](mailto:rapidresponse@mightyearth.org).



---

# New Case

**Group: KSP Agro**

**PT Bumi Agro Makmur**

**Concession & Clearance Location: -1.660022, 114.943705**

Deforestation and/or Peatland Development					
Report	Deforestation (ha)	Forest area Impacted	Peatland Development (ha)	Tree Cover Loss (ha)	Time Period
56	968				April 28, 2024 - January 23, 2026

Planet satellite imagery shows that between April 28, 2024 and January 23, 2026, there were 968 hectares of deforestation in the PT Bumi Agro Makmur concession.

# Supply Chain Information

Company/Group	Traders	Biofuel/Other	Consumer Brands
<p><b>KSP Agro Group</b></p> <p>PT Bonti Permai Jayaraya (PO1000007642); PT Kalimantan Sanggar Pusaka (PO1000007534); PT Sinar Dinamika Kapuas (PO1000004136)</p>	<p>AAK, ADM, Bunge, Fuji Oil, GAR, IFFCO, KAO, Olam, Pacific Inter-Link, Sime Darby, Wilmar</p>	<p>AVRIL, BASF, Galaxy Surfactants, Indorama, Nikko Chemicals, Nisshin Oillio, Oleon, Symrise</p>	<p>Barry Callebaut, Flora Food Group, General Mills, Grupo Bimbo, Hershey, Kellogg, Lion Corporation, Meiji Group, Mondelez, Nestle, PepsiCo, P&amp;G, PZ Cussons, Reckitt Benckiser</p>



---

# Case Notes and Evidence

## Ownership Structure

The PT Bumi Agro Makmur concession is located in Central Kalimantan. The company is 99.99% owned by PT Kalimantan Sanggar Pusaka (KSP Agro Group), which owns a mill in West Kalimantan (Mill ID: PO1000007534).

PT Kalimantan Sanggar Pusaka also owns three other mills located in West Kalimantan: PT Kalimantan Bina Permai (99.99%), PT Bontipermai Jayaraya (99.9%) and PT Sinar Dinamika Kapuas (99.99%). PT Bontipermai Jayaraya also owns a mill (ID: PO1000007642). PT Sinar Dinamika Kapuas also owns a mill (ID: PO1000004136).

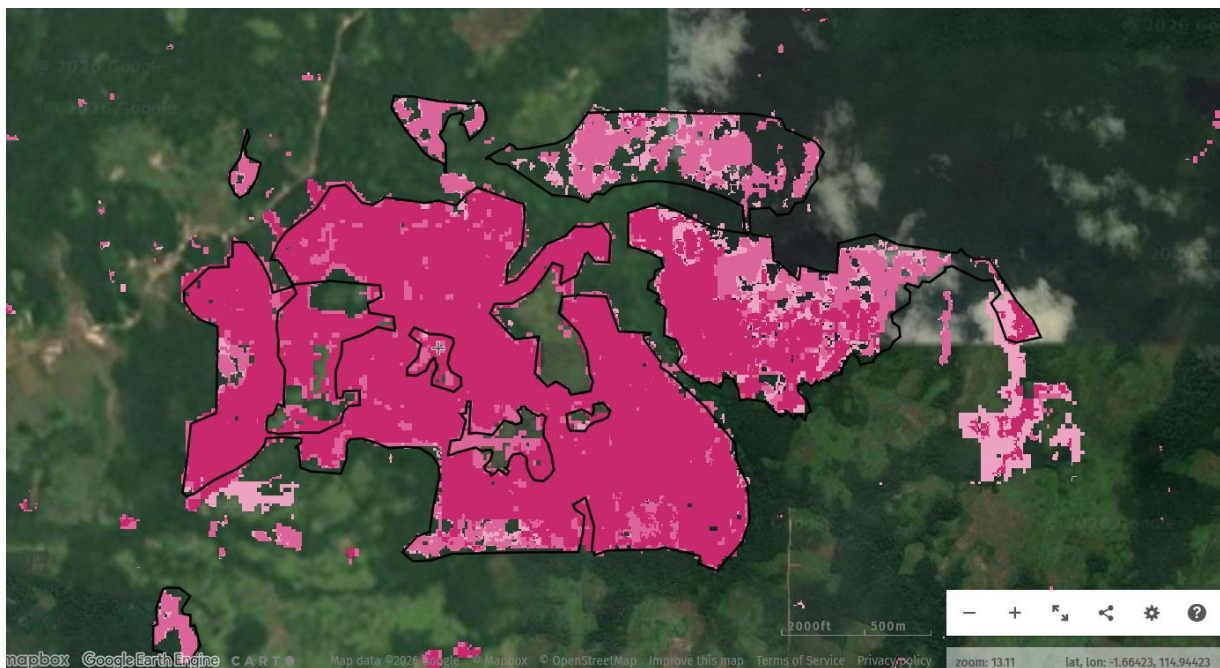
## NDPE Policies and Actions

No information was found on whether KSP Agro Group has a palm oil deforestation policy.

# Mapping Analysis

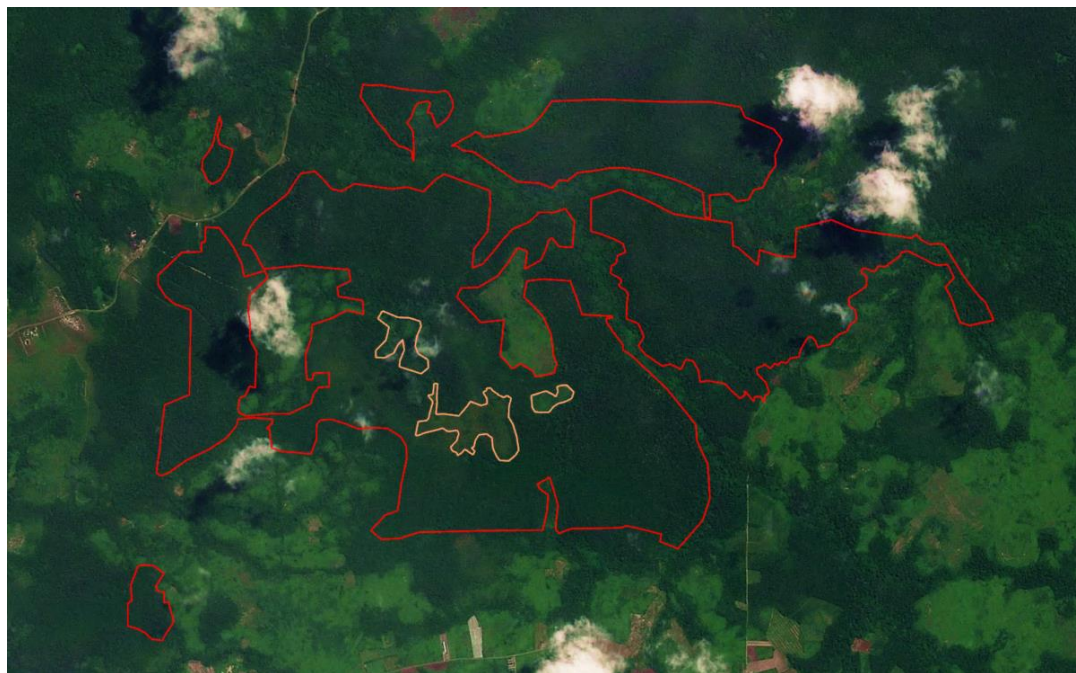
The below map shows Integrated Disturbance Alerts (tree cover) in the northern areas of the PT Bumi Agro Makmur concession for the period between April 11, 2024 and April 11, 2026.

Source: [Global Forest Watch](#).



# Mapping Analysis

The below Planet imagery from April 28, 2024 shows forest cover (red outline) within the northern areas of the PT Bumi Agro Makmur HGU concession boundary. The orange outlines indicate non-forest areas.



The below Planet imagery from January 23, 2026 shows 968 ha of forest areas were cleared since April 28, 2024 (red outline). The orange outlines indicate areas that were not previously forest.



# New Case

**Group: Hardaya Group / CCM Group**

**PT Hardaya Inti Plantations**

**Clearance Locations: 0.967997, 121.534959**

Deforestation and/or Peatland Development					
Report	Deforestation (ha)	Forest area Impacted	Peatland Development (ha)	Tree Cover Loss (ha)	Time Period
56	60				January 7, 2025 - March 27, 2026

Planet satellite imagery shows that between January 7, 2025 and March 27, 2026, there were 60 hectares of deforestation in the PT Hardaya Inti Plantations concession.

# Supply Chain Information

Company/Group	Traders	Biofuel/Other	Consumer Brands
<b>PT Hardaya Inti Plantations</b> <b>(PO1000006348)</b>	AAK, ADM, Cargill, Fuji Oil, KAO, Wilmar	AVRIL, BASF, Biesterfeld Spezialchemie, Galaxy Surfactants, Innospec, KAO Corp, Nisshin Oillio, Oleon, Symrise, Zchimmer & Schwarz	Barry Callebaut, Biersdorf, Grupo Bimbo, Johnson & Johnson, Kellogg, Lion Corporation, Meiji Group, Mondelez, Nestle, PepsiCo, P&G, PZ Cussons, Reckitt Benckiser, Sakamoto Yakuhi Kogyo
<b>Hardaya Group/CCM Group</b>	AAK, ADM, Cargill, Fuji Oil, Wilmar	AVRIL, BASF, Galaxy Surfactants, KAO Corp, Nisshin Oillio, Oleon, Symrise	Barry Callebaut, Biersdorf, General Mills, Grupo Bimbo, Kellogg, Lion Corporation, Meiji Group, Mondelez, Nestle, P&G, PepsiCo, PZ Cussons



---

# Case Notes and Evidence

## Ownership Structure

The PT Hardaya Inti Plantations concession is located in northern Sulawesi. The company owns a palm oil mill (ID: PO1000006348).

PT Hardaya Inti Plantations is part of the PT Central Cipta Murdaya Group, also known as the CCM Group. The CCM group is ultimately controlled by the Murdaya family. PT Sebuku Inti Plantation and PT Sebakis Inti Lestari (which owns a mill: ID PO1000004555) are also part of the Hardaya Group.

## NDPE Policies and Actions

The PT Hardaya Inti Plantations website is no longer functional. An archived version of the [website](#) does not list any sustainability policy or commitments to NDPE.

No HCV or HCS assessment could be found on the HCSA and HCVRN websites regarding PT Hardaya Inti Plantations. However, Musim Mas's [grievance log](#) states the following:

*December 2017: 'in view of the relationship with Musim Mas, Hardaya is agreeable to the stop work request and to conduct HCV and HCS assessments prior to any further land development.'*

*February 2028: Hardaya 'started the initial work to map the 'Go' and 'No-Go' areas respectively in the two concessions in Buol [north Sulawesi] and Nunukan [North Kalimantan]. Hardaya also agreed to undertake HCV and HCS assessments, as well as look into legal compliance, and establish an internal Standard Operating Procedure (SOP) on sustainability and NDPE.'*

*August 2018: 'Hardaya is currently working on its sustainability action plan.'*

No further updates have been provided on the Musim Mas grievance log.

Wilmar's [grievance log](#) states: 'Wilmar had already initiated engagement HPG [Hardaya Plantations Group] in September 2017 on the allegations of non-compliance to our NDPE Policy following findings from our internal proactive monitoring.'

*'HPG [Hardaya Plantations Group] has committed to a moratorium on land clearing, and currently exploring options for various assessment. They are also seeking consultation from AidEnvironment to establish their capacity to comply with NDPE requirements. Their first meeting with AidEnvironment was held in December 2017, and follow up with several regular meetings thereafter, in February and May 2018.....Wilmar continues to monitor HPG's activities on a monthly basis to ensure HPG will uphold their commitment to the moratorium.'*

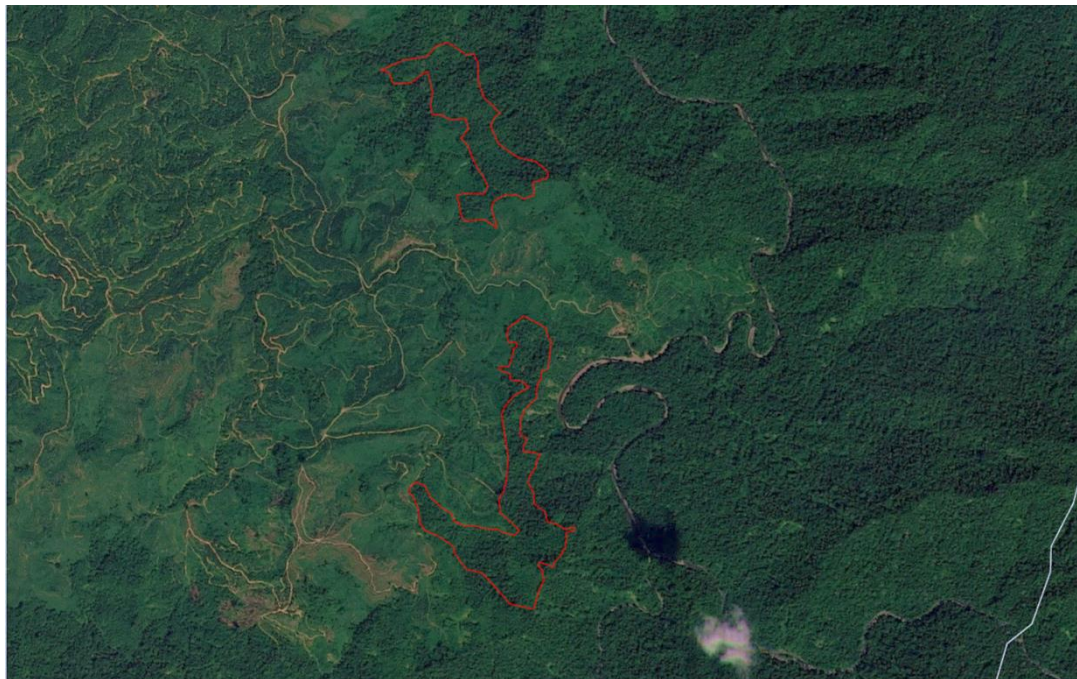
---



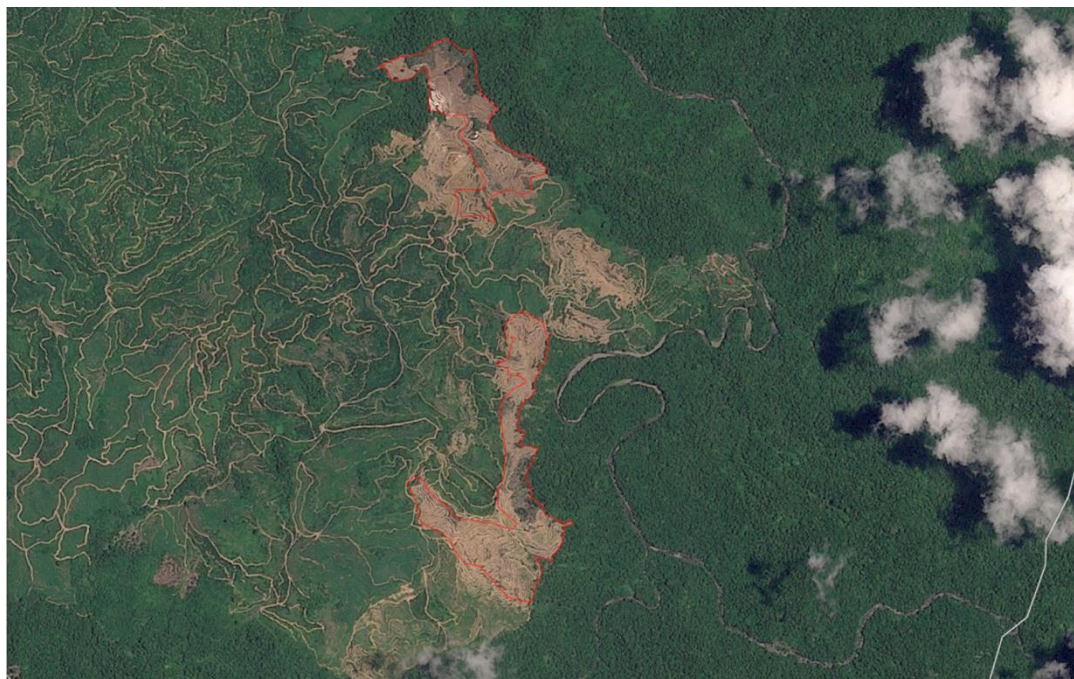
---

# Mapping Analysis

Planet Image: January 7, 2025



Planet Image: March 27, 2026



---

# Mapping Analysis

The August 2024 Airbus/Google Earth satellite images below show the forest canopy cover in the 2 cleared areas highlighted in this report.



---

# New Case

**Group: Sarawanti Group**

**PT Saraswanti Sawit Makmur**

**Concession & Clearance Location: -2.206957, 115.995839**

Deforestation and/or Peatland Development					
Report	Deforestation (ha)	Forest area Impacted	Peatland Development (ha)	Tree Cover Loss (ha)	Time Period
56	255				November 11, 2022 - October 7, 2025

Planet satellite imagery shows that between November 11, 2022 and October 7, 2025, there were 255 hectares of deforestation in the PT Saraswanti Sawit Makmur concession.



# Supply Chain Information

Company/Group	Traders	Biofuel/Other	Consumer Brands
<b>PT Saraswanti Sawit Makmur (PO1000006226)</b>	ADM, Apical, Bunge, Cargill, Fuji Oil, IFFCO, Olam	AVRIL, BASF, Biesterfeld, Galaxy Surfactants, Nisshin Oillio, Oleon, Symrise	Barry Callebaut, General Mills, Grupo Bimbo, Johnson & Johnson, Kellogg, Lion Corporation, Meiji Group, Mondelez, Nestle, PepsiCo, PZ Cussons, Reckitt Benckiser



---

# Case Notes and Evidence

## Ownership Structure

The PT Saraswanti Sawit Makmur concession is located in East Kalimantan. The company is a subsidiary (97.5%) of PT Saraswanti Utama, which is the controlling shareholder (74%) of [PT Saraswanti Anugerah Makmur TBK](#).

PT Saraswanti Sawit Makmur owns a mill within its concession (Mill ID: PO1000006226).

## NDPE Policies and Actions

No sustainability policy was found for PT Saraswanti Sawit Makmur on the website of [PT Saraswanti Anugerah Makmur TBK](#).

---

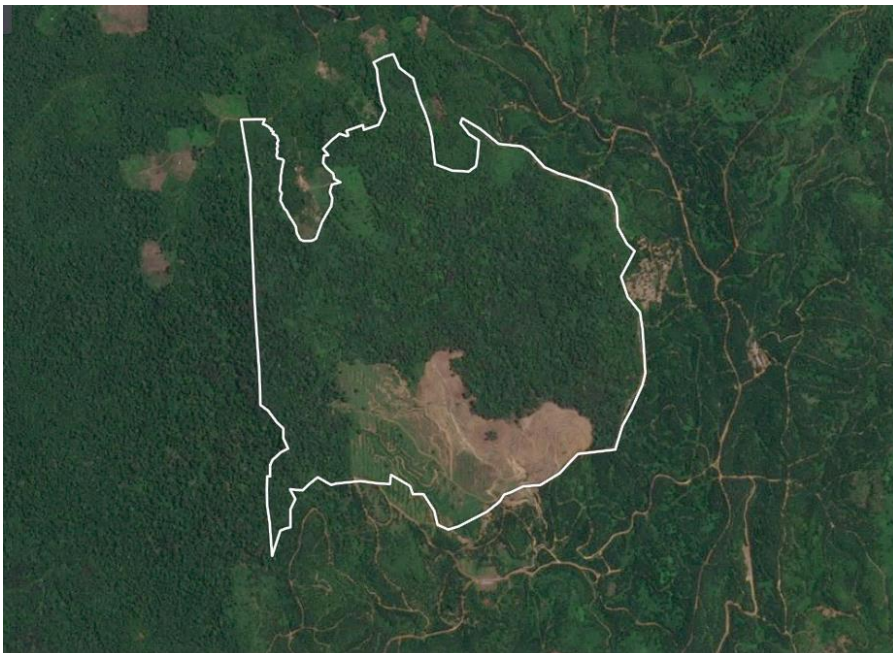
# Mapping Analysis

The Planet satellite images below show the progression of deforestation in the PT Saraswanti Sawit Makmur concession, starting in November 30, 2022 and continuing through April 4, 2024.

**Planet Image: November 30, 2022**



**Planet Image: April 4, 2024**



---

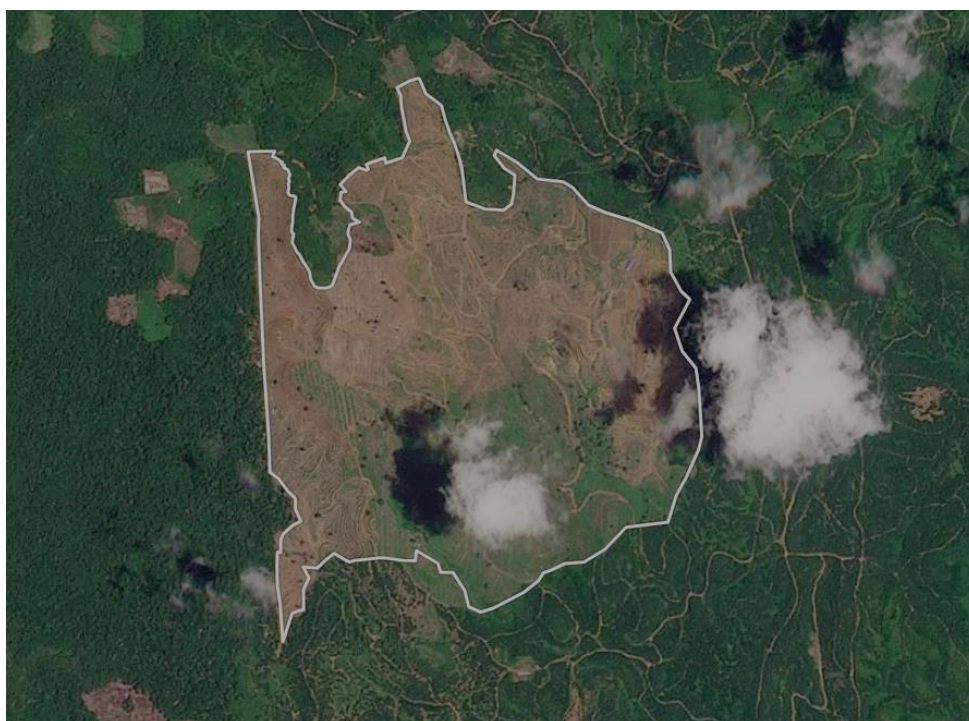
# Mapping Analysis

As seen from the 2 additional Planet images below, land clearing continued through July 3, 2025 to October 7, 2025. A total of 255 ha of forest was cleared between November 30, 2022 and October 7, 2025.

**Planet Image: July 3, 2025**



**Planet Image: October 7, 2025**



# Ongoing Case

**Group: ABM (Abdi Budi Mulia) Group**

**PT Kalimantan Hamparan Sawit**

**Concession location: -1.401488, 113.324790**

Deforestation and/or Peatland Development					
Report	Deforestation (ha)	Number of Conservation Areas Impacted by land clearing	Peatland Development (ha)	Tree Cover Loss (ha)	Time Period
44				11,630	January 1, 2019 - December 31, 2023
56		10 areas identified			December 21, 2024 - February 14, 2026

Planet satellite imagery shows that between December 21, 2024 and February 14, 2026, at least 10 of the areas proposed for conservation in the PT Kalimantan Hamparan Sawit concession were impacted by land clearing.



# Supply Chain Information

Company/Group	Traders	Biofuel/Other	Consumer Brands
<b>PT Abdi Budi Mulia (ABM Group)</b>	AAK, ADM, Bunge, Cargill, COFCO Int., Fuji Oil, IFFCO, LDC, Olam, Pacific Inter- Link, SD Guthrie, Wilmar	Avril, BASF, Biesterfeld Spezialchemie, Galaxy Surfactants, Indorama, KAO, Nisshin Oillio, Oleon, Permata Hijau, Symrise	Barry Callebaut, Colgate Palmolive, Flora Food Group, Friesland Campina, General Mills, Grupo Bimbo, Hershey, Kellogg, Lion Corporation, Meiji Group, Mondelez, Nestle, Pepsi Co, PZ Cussons, Reckitt Benckiser, Vandemoortele



---

# Case Notes and Evidence

## Ownership Structure

The PT Kalimantan Hamparan Sawit concession is located in Central Kalimantan. The company is owned by the PT Abdi Budi Mulia Group, also known as the ABM Group.

## NDPE Policies and Actions

The PT Kalimantan Hamparan Sawit case was first highlighted in [Rapid Response report 44](#). The report concluded that between January 1, 2019 and December 31, 2023, there was 11,630 hectares of tree cover loss in the PT Kalimantan Hamparan Sawit concession.

In August 2024, following several interventions by palm oil traders, the ABM Group commissioned an [Integrated HCV-HCSA Assessment](#) for the PT Kalimantan Hamparan Sawit concession.

Wilmar's grievance log states: '*PT ABM is committed to conducting HCV-HCS assessments **prior to any new development at the group level**. As part of this commitment, PT Kalimantan Hamparan Sawit (PT KHS), which shares the same parent group as PT ABM, has completed an integrated HCV-HCS assessment under the HCVN-ALS scheme. The report was deemed satisfactory following review by HCVN in November 2025 and can be accessed via the following link: [HCVN Assessment Report](#).*'

The assessment designated a total of 668 hectares as conservation areas (HCS forest and HCV categories 1, 3, 4 and 6).

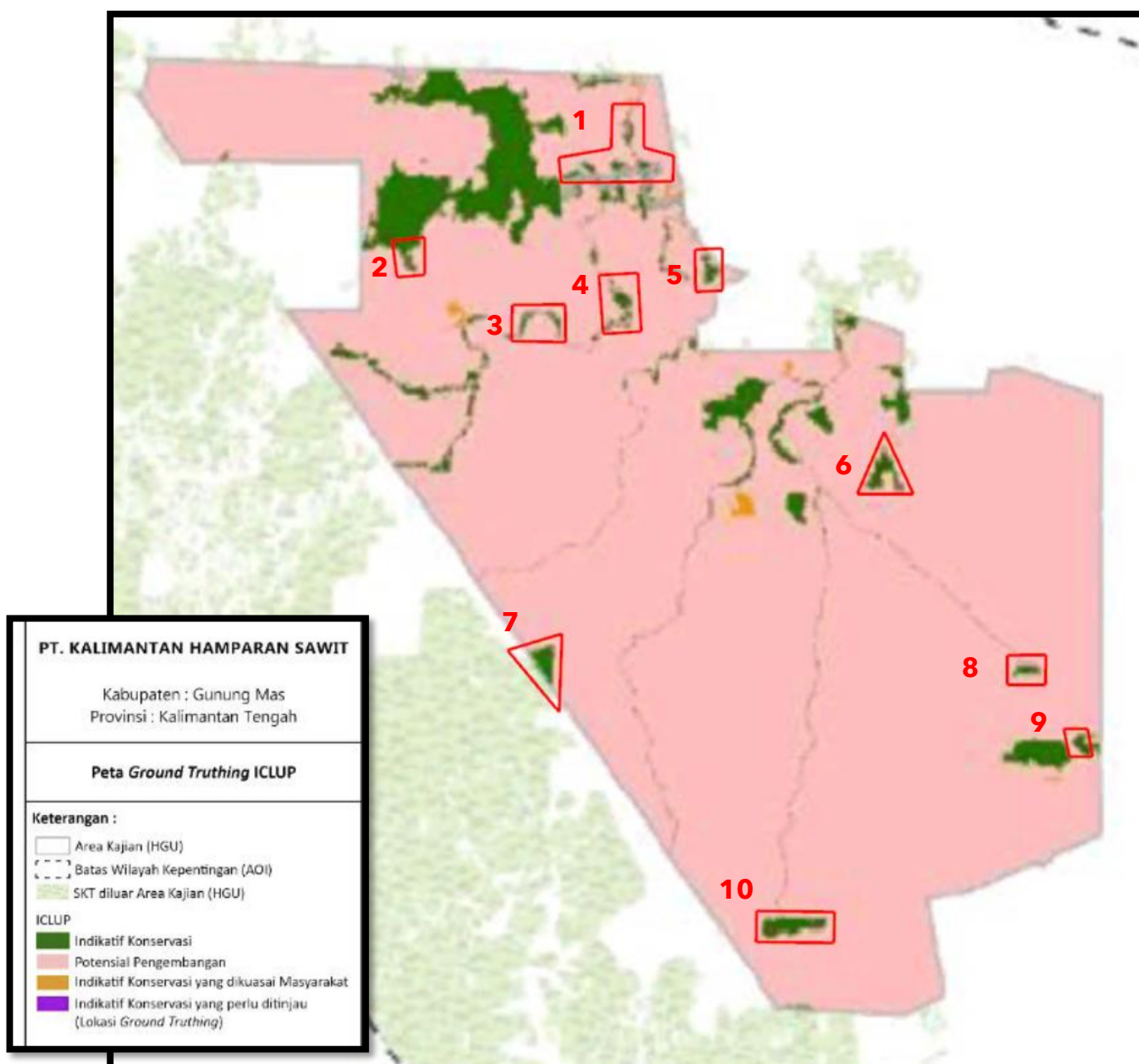
While the statement above claims that '*PT ABM is committed to conducting HCV-HCS assessments prior to any new development at the group level,*' **Planet satellite analysis shows that PT Kalimantan Hamparan Sawit started clearing in 6 out of the 10 areas marked for conservation before the HCV-HCSA Assessment was finalised.** See table and maps below.

The mapping analysis on the following pages identifies 10 examples of areas designated for conservation within the PT Kalimantan Hamparan Sawit concession which have been impacted by land clearing between December 21, 2024 and February 14 2026.



# Mapping Analysis

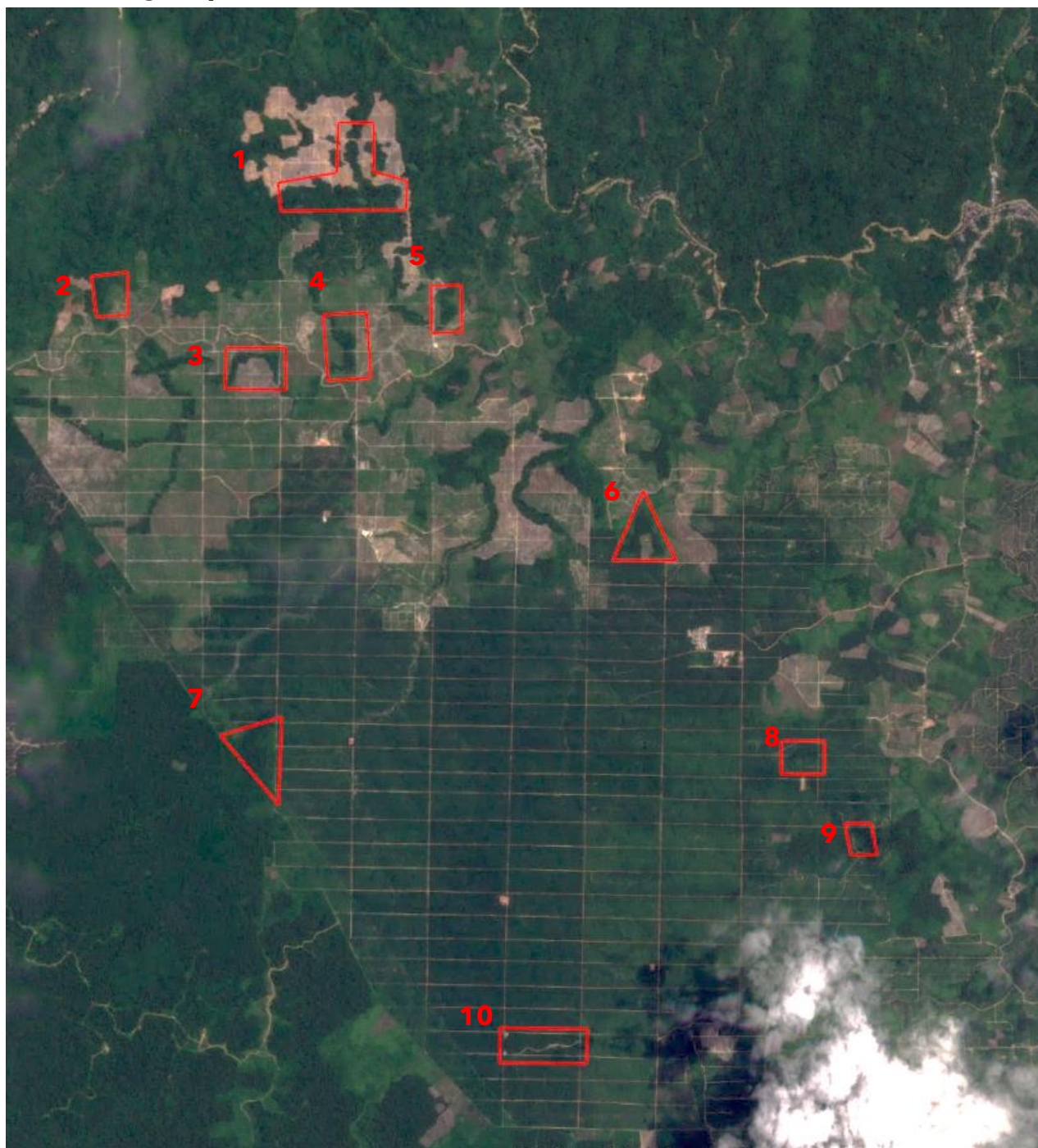
In November 2025, the HCV Network published a [summary report](#) of an Integrated HCV-HCSA Assessment for the PT Kalimantan Hamparan Sawit concession. The report includes the map below, entitled '*Integrated Conservation Land Use Plan/ ICLUP*.' According to the map's legend, the green areas are marked for 'indicative conservation' and the pink areas are potential areas for development. The image below shows 10 conservation areas (red outlines) that have been impacted by clearing.



# Mapping Analysis

The Planet satellite image below from April 8, 2024 shows the land cover of the 10 areas designated for conservation by the HCV-HCS Assessment (i.e. before any new land clearing took place).

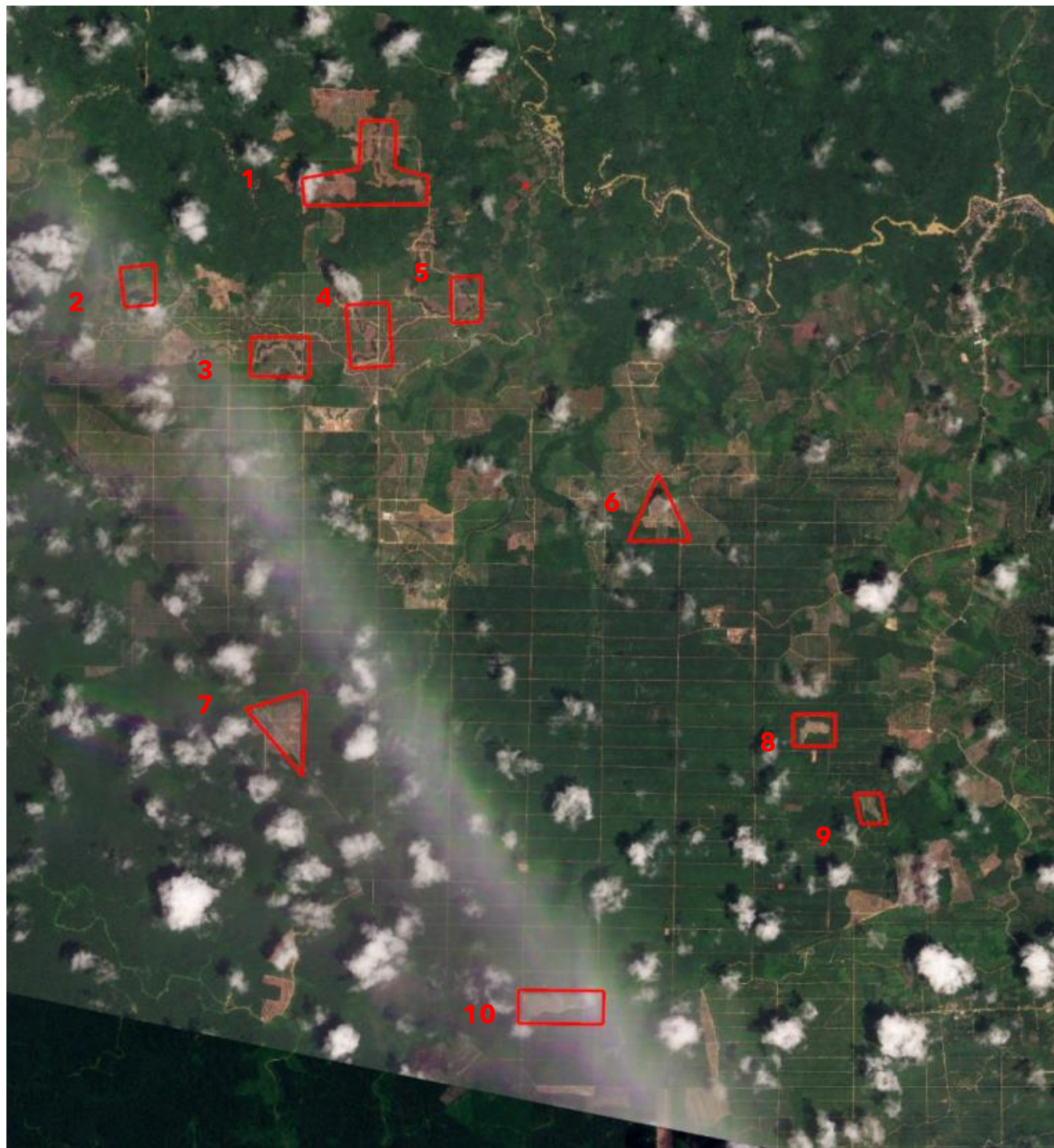
## Planet Image: April 8, 2024



# Mapping Analysis

The Planet satellite image below shows land clearing conducted between December 21, 2024 and February 14, 2026 inside 10 areas designated for conservation by the HCV-HCS Assessment.

## Planet Image: February 14, 2026



# Mapping Analysis

The table below, and the series of Planet satellite images on the following pages, demonstrate the locations of 10 HCV and HCS areas designated for conservation where land clearing has taken place between December 21, 2024 and March 14, 2026 in the PT Kalimantan Hamparan Sawit concession.

**Further, Planet satellite analysis shows that PT Kalimantan Hamparan Sawit started clearing in 6 out of the 10 areas marked for conservation *before* the HCV-HCSA Assessment was finalised: see rows highlighted in red below.**

<b>Land clearing in 10 proposed conservation areas in PT Kalimantan Hamparan Sawit</b>				
<b>Area</b>	<b>Central Coordinates of Conservation Area</b>	<b>HCV Categories</b>	<b>Overall Time Period for Land Clearing</b>	<b>Date Land Clearing Started</b>
<b>1</b>	-1.348425, 113.307769	4	December 21, 2021 - March 14, 2026	Jan 3-14, 2026
<b>2</b>	-1.362021, 113.279481	1,4		Aug 30 to Sept 14, 2025
<b>3</b>	-1.368960, 113.296227	4		Nov 28, 2025 to Dec 14, 2025
<b>4</b>	-1.367119, 113.306636	4		Dec 15-17, 2025
<b>5</b>	-1.362870, 113.318390	4		Dec 28, 2025 to Jan3, 2026
<b>6</b>	-1.389998, 113.341757	1, 3		Aug 10-26, 2025
<b>7</b>	-1.415654, 113.296131	1, 3		Oct 24-30, 2024
<b>8</b>	-1.415546, 113.359904	4		Sept 22-30, 2025
<b>9</b>	-1.425908, 113.366963	HCS (not HCV)		Nov 10-20, 2024
<b>10</b>	-1.448955, 113.328709	1, 3, 4		July 8-13, 2025



---

# Mapping Analysis

**Area 1: -1.348425, 113.307769**

**Planet Image: December 21, 2024**

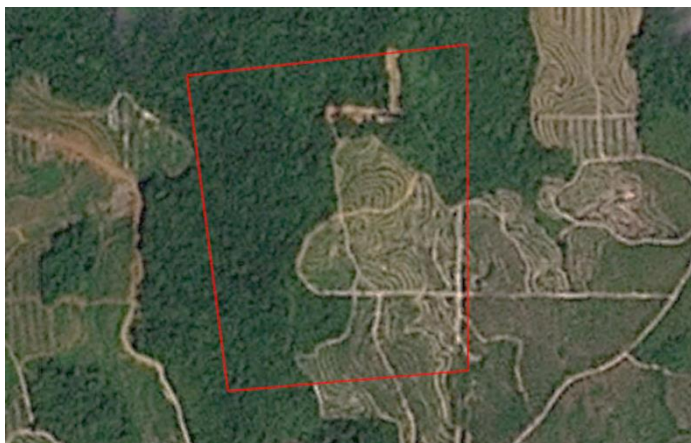


**Planet Image: February 14, 2026**



**Area 2: -1.362021, 113.279481**

**Planet Image: December 21, 2024**



**Planet Image: February 14, 2026**

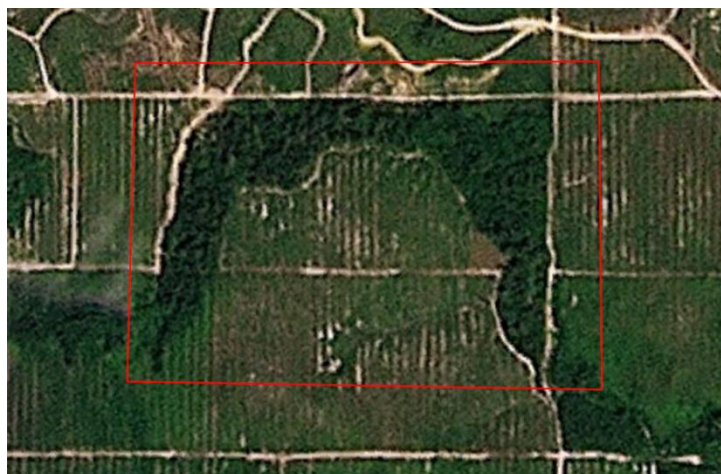


---

# Mapping Analysis

**Area 3: -1.368960, 113.296227**

**Planet Image: December 21, 2024**

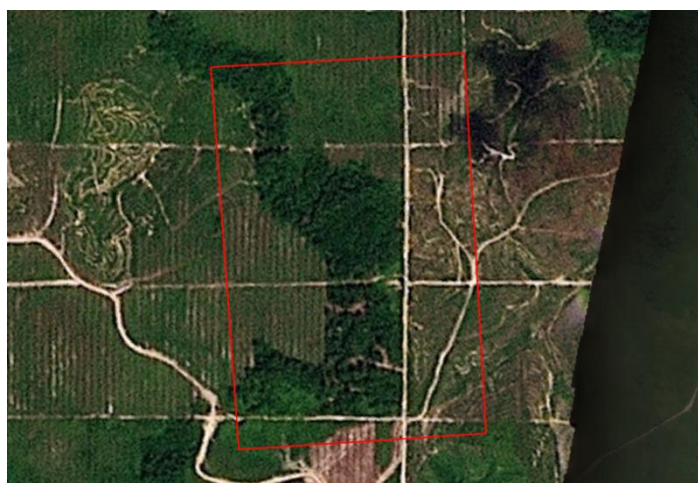


**Planet Image: February 14, 2026**



**Area 4: -1.367119, 113.306636**

**Planet Image: December 21, 2024**



**Planet Image: February 14, 2026**



---

# Mapping Analysis

**Area 5: -1.362870, 113.318390**

**Planet Image: January 5, 2025**



**Planet Image: February 14, 2026**



**Area 6: -1.389998, 113.341757**

**Planet Image: January 5, 2025**



**Planet Image: February 14, 2026**



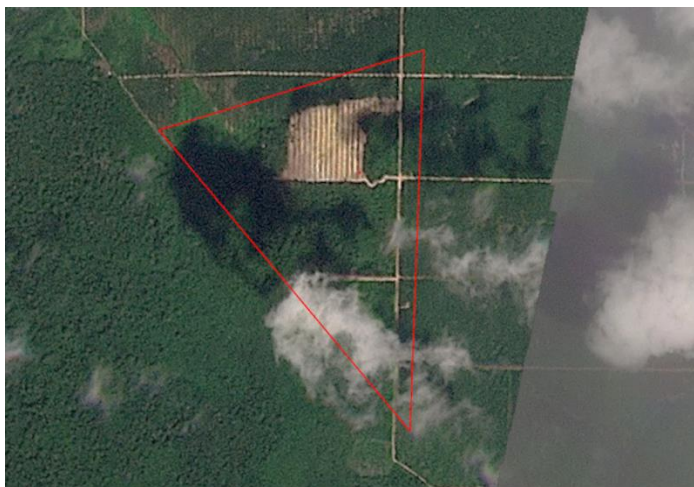
---

# Mapping Analysis

## Area 7: -1.415654, 113.296131

The below set of Planet satellite images of Area 7 show that land clearing in Area 7 had already started before December 21, 2024 - a year before the HCV-HCSA Assessment was finalised.

### Planet Image: December 21, 2024

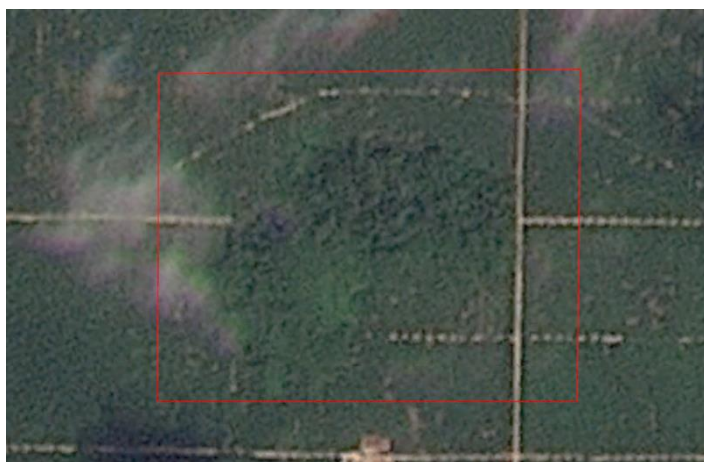


### Planet Image: February 14, 2026



## Area 8: -1.415546, 113.359904

### Planet Image: January 5, 2025



### Planet Image: February 14, 2026



---

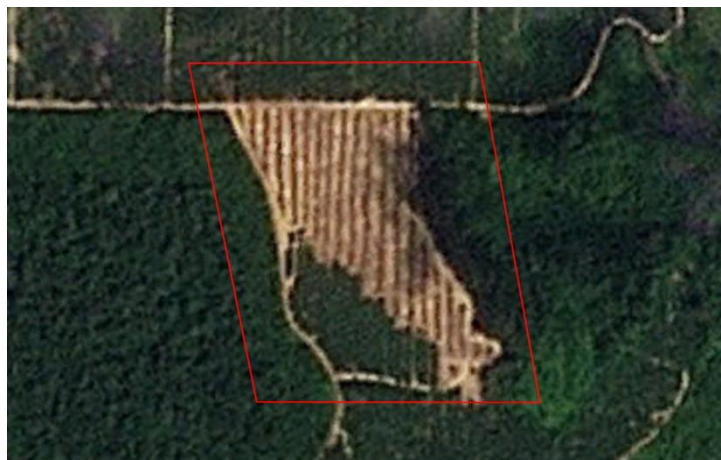
# Mapping Analysis

**Area 9: -1.425908, 113.366963**

**Planet Image: April 8, 2024**

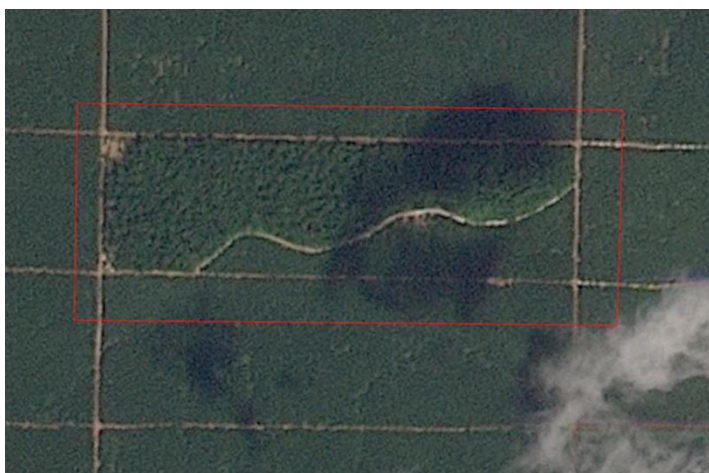


**Planet Image: January 5, 2025**

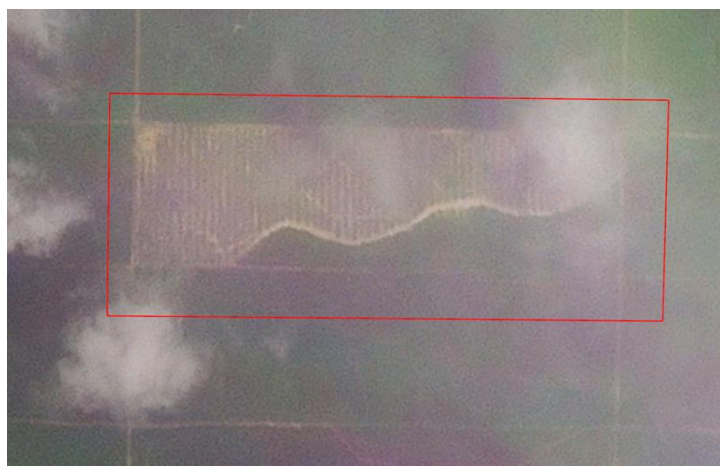


**Area 10: -1.448955, 113.328709**

**Planet Image: January 5, 2025**



**Planet Image: February 14, 2026**





Follow Us: [LinkedIn](#) | [Twitter](#) | [Instagram](#)

---

1701 Rhode Island Avenue NW | Suite 3-123 | Washington, DC | 20036  
[www.mightyearth.org](http://www.mightyearth.org)