

# RAPID RESPONSE

# PALM OIL SECTOR REPORT 55



Prepared with  
support from



March  
2026

---

# Table of Contents



01

PT Teguh Swakarsa Sejahtera  
**(TSH Group)**

---



06

PT Uniseraya  
**(Panca Eka Group)**

---

## Supply Chain Information

Supply chain information included in Rapid Response reports is based on the latest public versions of mill disclosures, recent export data, and grievance logs. Mighty Earth encourages companies to send updated versions of mill disclosures as soon as they become available and to share any decision to suspend relations with a given group/company with [rapidresponse@mightyearth.org](mailto:rapidresponse@mightyearth.org).



# New Case

**Group: TSH Resources Bhd (TSH Group)**

**PT Teguh Swakarsa Sejahtera**

**Concession & Clearance Location: -0.68303, 116.08213**

Deforestation and/or Peatland Development					
Report	Deforestation (ha)	Forest area Impacted	Peatland Development (ha)	Tree Cover Loss (ha)	Time Period
55		350-metre drainage canal infrastructure			Nov 1, 2025 and Nov 17, 2025

Planet satellite Imagery shows that between November 1, 2025 and November 17, 2025, drainage canal infrastructure between 20-25 metres wide and 350 metres long was constructed in the PT Teguh Swakarsa Sejahtera concession. The drainage canal extends northwest of an existing oil palm plantation area.

# Supply Chain Information

Company/Group	Traders	Biofuel/Other	Consumer Brands
<b>TSH Group</b>	AAK, ADM, Apical, Bunge, Cargill, Fuji Oil, GAR, IFFCO, Itochu, KLK, Mitsubishi Corporation, SD Guthrie, Wilmar	Avril, BASF, Biesterfeld Spezialchemie, Galaxy Surfactants Ltd, Indorama, Innospec, KAO, Neste, Nikko Chemicals, Nisshin Oillio, Olenex, Oleon, Sakamoto Yakuin Kogyo, Stearinerie Dubois, Symrise, Zchimmer & Schwarz	Barry Callebaut, Beiersdorf, Flora Food Group, Friesland Campina, General Mills, Grupo Bimbo, Hershey's, Johnson & Johnson, Kellogg, Lion Corporation, Meiji, Mondelez, Nestle, Nissin Foods, Pepsi Co, P&G, PZ Cussons, Vandemoortele



---

# Case Notes and Evidence

## **Ownership Structure**

PT Teguh Swakarsa Sejahtera is part of TSH Resources Bhd ([TSH Group](#)).

## **NDPE policies and actions**

TSH Group has a [Group Sustainability Policy](#), which states: *'We are committed to no deforestation. We will protect biodiversity by identifying, conserving, and managing High Conservation Value ("HCV") areas and High Carbon Stock ("HCS") forests.'*

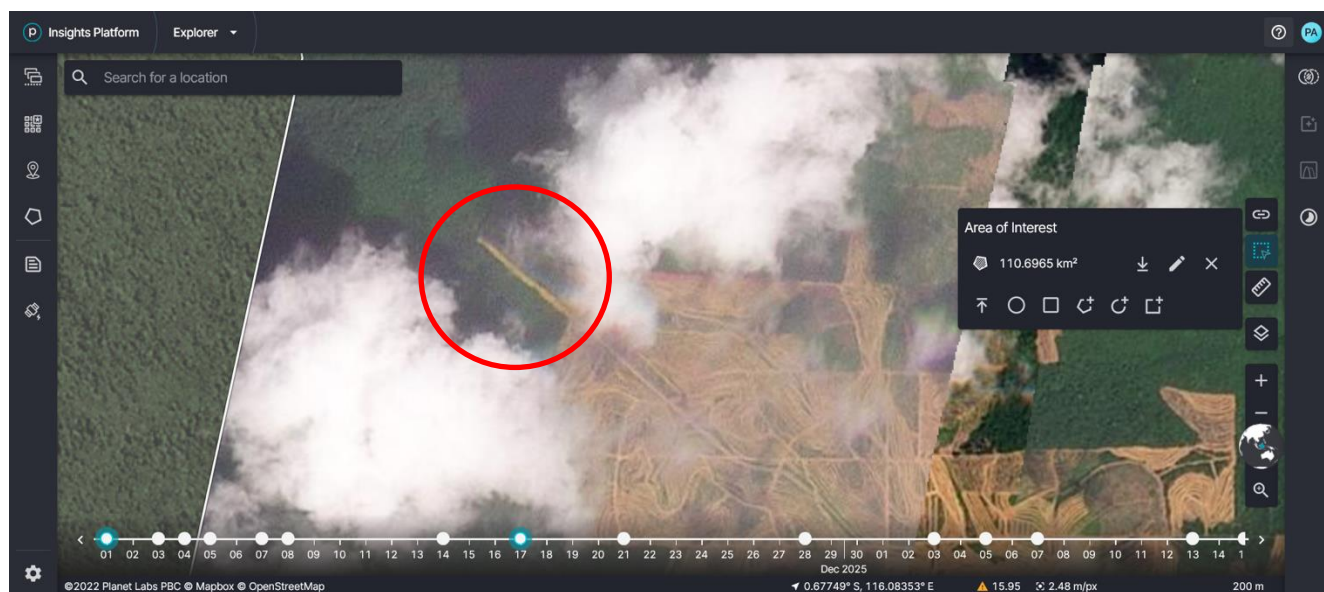
However, no HCS assessment for the PT Teguh Swakarsa Sejahtera concession was found on the company's website, the [HCSA website](#) or the [HCVRN website](#).

# Mapping Analysis

**Planet Image: November 1, 2025**



**Planet Image: November 17, 2025**

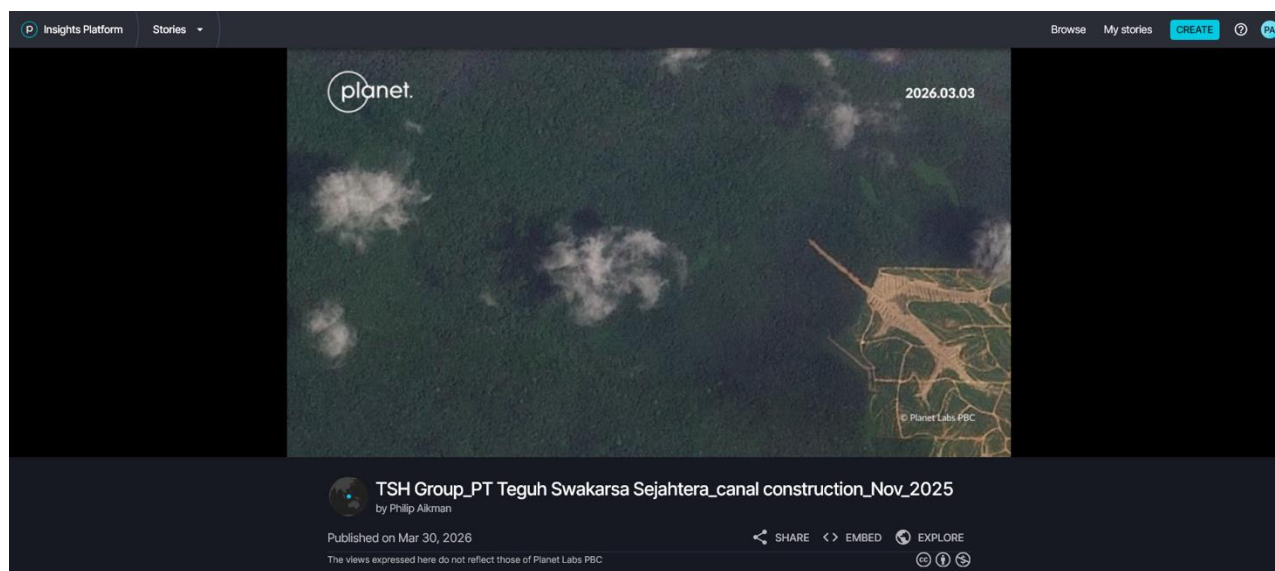


# Mapping Analysis

A high-resolution Planet image (50 cm) captured on February 5, 2026 shows the forest canopy adjacent to the drainage canal (coordinates: -0.68303, 116.08213).



Additional Planet imagery shows that the drainage canal is a new construction – see [time series imagery](#) from January 5, 2016 to March 3, 2026.



# New Case

**Group: Panca Eka Group**

**PT Uniseraya**

**Concession & Clearance Location: 0.719705°, 102.706021° (east) and 0.726474°, 102.526064° (west)**

<b>Deforestation and/or Peatland Development</b>				
<b>Report</b>	<b>Peatland Deforestation (ha)</b>	<b>Plantation Development on Peatland (ha)</b>	<b>Drainage Canal Development on Peatland (ha)</b>	<b>Time Period</b>
<i>Eastern part of the PT Uniseraya concession</i>				
55	255	627		March 23, 2024 and Feb 11, 2026
<i>Western part of the PT Uniseraya concession</i>				
55		705	299	April 30, 2024 and Feb 24, 2026

Planet satellite imagery shows that between March 23, 2024 and February 11, 2026, there were 255 ha of deforestation and 627 ha of plantation development on peatland in the eastern part of the PT Uniseraya concession.

Planet satellite Imagery shows that between April 30, 2024 and Feb 24, 2026, there were 705 ha of plantation development and 299 ha of drainage canal development on peatland in the western part of the PT Uniseraya concession. This includes the building of a peatland drainage canal through a forest area.



# Supply Chain Information

Company/Group	Traders	Biofuel/Other	Consumer Brands
<b>PT Agro Abadi</b> <b>(PO1000008215)</b>	AAK, ADM, Cargill, COFCO, Fuji Oil, GAR, IFFCO, IOI, KLK, LDC, Pacific Inter-Link, Musim Mas, Olam Agri, SD Guthrie, Wilmar	Avril, BASF, Biesterfeld Spezialchemie, Galaxy Surfactants Ltd, Indorama, Innospec, KAO, Neste, Nikko Chemicals, Nisshin Oillio, Olenex, Sinarmas Cepsa, Stearinerie Dubois, Symrise, Zchimmer & Schwarz	Barry Callebaut, Beiersdorf, Flora Food Group, Friesland Campina, General Mills, Grupo Bimbo, Hershey, Johnson & Johnson, Kellogg, Lion Corporation, Meiji Group, Mondelez, Nestle, Olean, Pepsi Co, P&G, PZ Cussons, Sakamoto Yakuhi Kogyo
<b>PT Kebun Pantai Raja</b> <b>(PO1000004341)</b>	ADM, Cargill, COFCO, Fuji Oil, GAR, IFFCO, KLK, LDC, Olam, Pacific Inter Link, SD Guthrie, Wilmar	Avril, BASF, Biesterfeld Spezialchemie, Galaxy Surfactants Ltd, Indorama, Innospec, KAO, Neste, Nikko Chemicals, Nisshin Oillio, Olenex, Sinarmas Cepsa, Stearinerie Dubois, Symrise	Barry Callebaut, Beiersdorf, Colgate Palmolive, Friesland Campina, General Mills, Grupo Bimbo, Hershey, Johnson & Johnson, Kellogg, Lion Corporation, Meiji Group, Mitsubishi Corporation, Mondelez, Nestle, Olean, Pepsi Co, P&G, PZ Cussons, Sakamoto Yakuhi Kogyo, Unilever
<b>PT Sindora Seraya</b> <b>(PO1000011478)</b>	AAK, ADM, Cargill, COFCO, Fuji Oil, GAR, IFFCO, KLK, LDC, Musim Mas, Olam Agri, Pacific Inter-Link, SD Guthrie, Wilmar	Avril, BASF, Biesterfeld Spezialchemie, Galaxy Surfactants Ltd, Indorama, Innospec, KAO, Neste, Nikko Chemicals, Nisshin Oillio, Olenex, Sinarmas Cepsa, Stearinerie Dubois, Symrise	Barry Callebaut, Beiersdorf, Flora Food Group, Friesland Campina, General Mills, Grupo Bimbo, Hershey, Johnson & Johnson, Kellogg, Lion Corporation, Meiji Group, Mitsubishi Corporation, Mondelez, Nestle, Olean, Pepsi Co, P&G, PZ Cussons, Sakamoto Yakuhi Kogyo



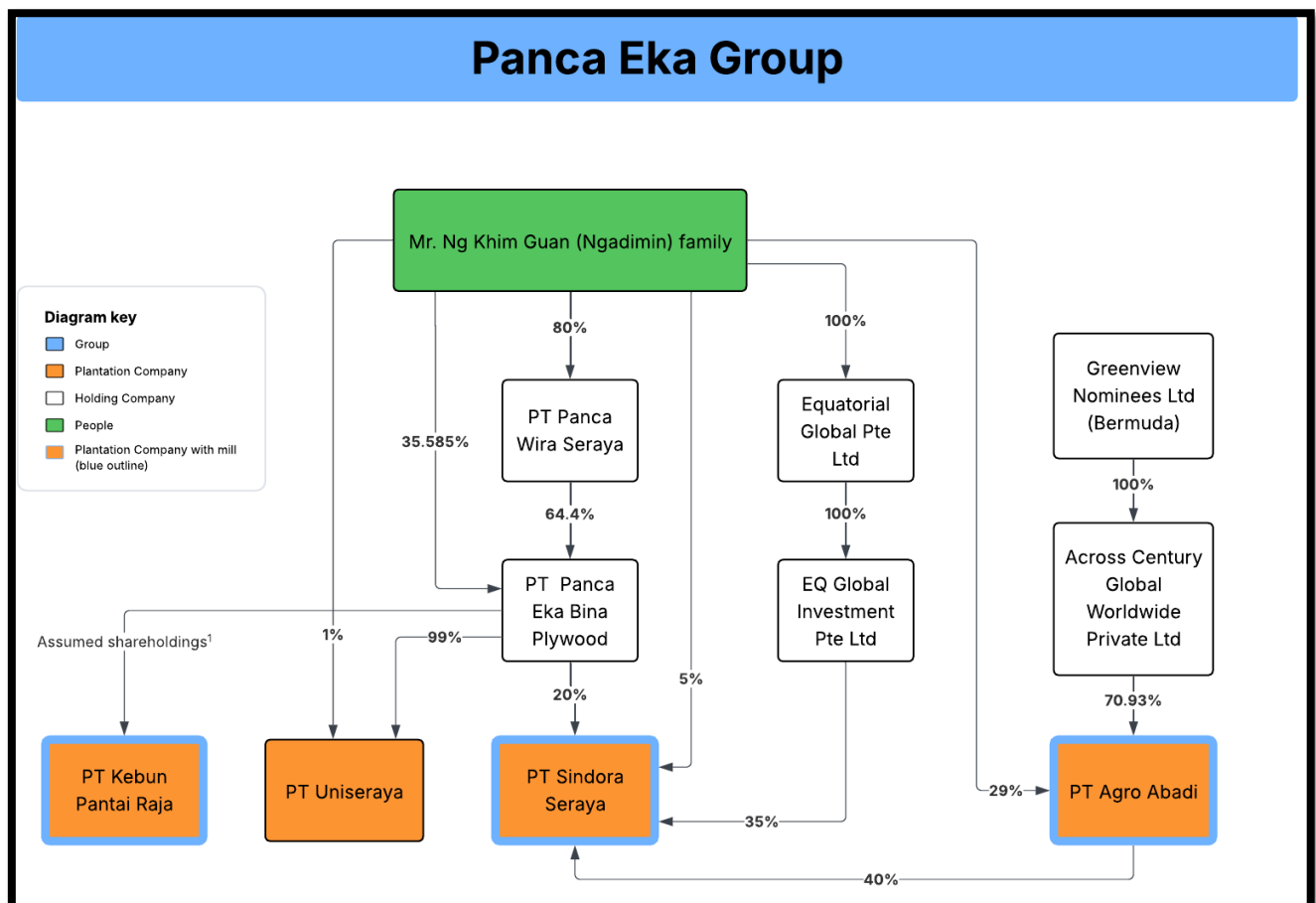
# Case Notes and Evidence

## Ownership Structure

PT Uniseraya is part of the Panca Eka Group, which is ultimately owned by Mr. Ng Khim Guan (Ngadimin) and his family members. See ownership structure below.

Mighty Earth has identified 3 mills which are part of the Panca Eka Group:

- PT Kebun Pantai Raja (PO1000004341)
- PT Sindora Seraya (PO1000011478)
- PT Agro Abadi (PO1000008215)



<sup>1</sup>e.g. <https://ppid.riau.go.id/download/17/1747211646buku-statistik-perkebunan-provinsi-riau-th.pdf>; several traders' mill lists

# Case Notes and Evidence

## NDPE Policies and Actions

The Panca Eka Group does not have an NDPE policy.

The PT Uniseraya concession is located entirely on peatland. Oil palm plantation development on the concession has been the subject of several traders' grievance logs. The following provides a chronological overview of actions taken by Apical, Bunge, Fuji Oil and Permata Hijau:

**April - May 2024:** Apical's [grievance log](#) states that: 'In April and May 2024, Apical received allegations from its customers regarding 263 ha of peat and peat forest clearance by PT. Uniseraya, a subsidiary of Panca Eka Group [...] Apical's internal investigation and clarification with third party service providers indicated that there was clearance of peat conducted by PT Uniseraya.'

**July 2024:** Apical's [grievance log](#) states that in July 2024, the group 'decided to stop sourcing from Panca Eka Group until further commitment from the group to stop further peat clearance and develop a recovery plan for PT. Uniseraya, in line with Apical's NDPE requirements.'

**August 2024:** [Fuji Oil's grievance log](#) states: 'T1 supplier (#1) 6 Aug 2024 - Direct supplier has received confirmation from supplier that clearance in peatland is confirmed so they have put Panca Eka Group on their no-buy list. The company does not seem to implement any SWO [Stop Work Order] as well. Direct supplier will inform internally about this to ensure Panca Eka Group is not entering the supply chain from other third parties.'

[Note: Mighty Earth assumes that the Fuji Oil Tier 1 supplier mentioned above is Apical]

**February 2025:** Permata Group's [grievance log](#) states that in February 2025, the group 'decided to place Panca Eka Group and all its subsidiaries on the No Buy list.'

**June 2025:** [Fuji Oil's grievance log](#) states: 'T1 supplier (#2) 19 Jun 2025 - To uphold the NDPE commitment PT Uniseraya agree to do the HCV-HCS-LUCA assessment to have a comprehensive assessment regarding their Go/No-Go area as well as the potential liability. This activity of comprehensive studies will be assisted by RemarkAsia which targeted to start the assessment by end of June 2025.'

**July 2025:** [Bunge's grievance log](#) states that they have suspended Panca Eka. It also notes that 'Several Tier 1 suppliers of Bunge confirmed that they have applied its leverage and secured a Stop Work Order from Panca Eka on further development within PT Uniseraya. Additionally, Bunge has sighted the written commitment from Panca Eka that they have appointed an ALS licensed assessor, Remark Asia, to conduct the integrated HCV/HCS assessments with peer review by technical experts to guide responsible and NDPE compliant development.'

**Despite PT Uniseraya's commitment to conduct an integrated HCV/HCS assessment, the company has not implemented a Stop Work Order (SWO) and is continuing to develop oil palm plantations in peatland areas of the concession.**



# Mapping Analysis

## *PT Uniseraya's post-April 2024 expansion*

The mapping analysis in this report focuses on the period of PT Uniseraya's oil palm expansion immediately following April 2024 when Apical first raised this case as a grievance (as stated on the previous page).

## *Eastern part of the PT Uniseraya concession*

The table below and series of Planet satellite images on the following pages shows the areas of oil palm expansion in the eastern part of the PT Uniseraya concession between March 23, 2024 and February 11, 2026.

<b>Plantation expansion: Eastern part of the PT Uniseraya concession</b>				
<b>Area</b>	<b>Central Coordinates of Area</b>	<b>Peatland Deforestation (ha)</b>	<b>Plantation Development on Peatland (ha)</b>	<b>Time Period</b>
<b>1</b>	<b>0.70969, 102.65570</b>	<b>255</b>		<b>March 23, 2024 and February 11, 2026</b>
<b>2</b>	<b>0.71185, 102.67836 / 0.72606, 102.73286</b>		<b>591</b>	
<b>3</b>	<b>0.74820, 102.69237</b>		<b>36</b>	

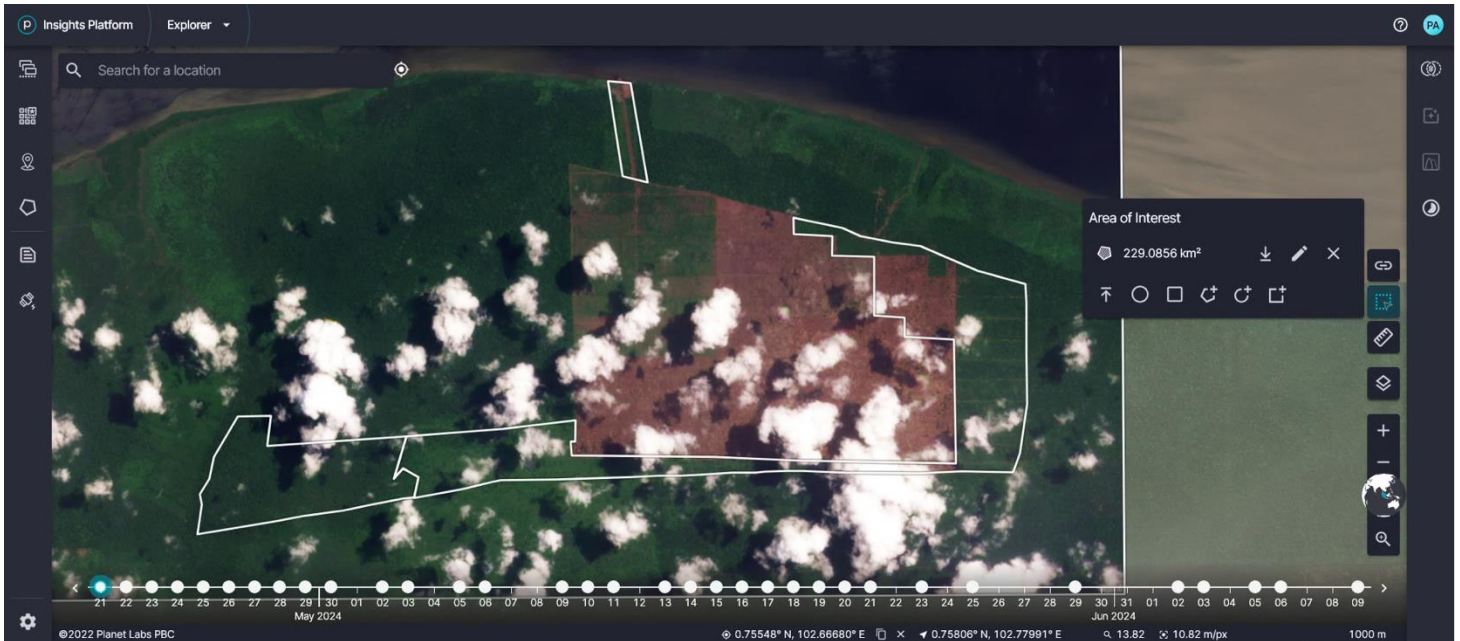


# Mapping Analysis

**Planet Image: March 23, 2024**



**Planet Image: April 21, 2024**



# Mapping Analysis

**Planet Image: October 2, 2024**



**Planet Image: February 11, 2026**



---

# Mapping Analysis

## ***Eastern part of the PT Uniseraya concession (continued)***

The Planet imagery below shows a peatland drainage canal and the development of a plantation area extending to the main river (denoted as area 3 in the table on p.10 and image on p.11). Although the area is outside the HGU boundaries obtained by Mighty Earth, it is assumed that this area was developed by PT Uniseraya (coordinates: 0.749078, 102.692400).

### ***Planet Image: March 23, 2024***



### ***Planet Image: February 3, 2026***



# Mapping Analysis

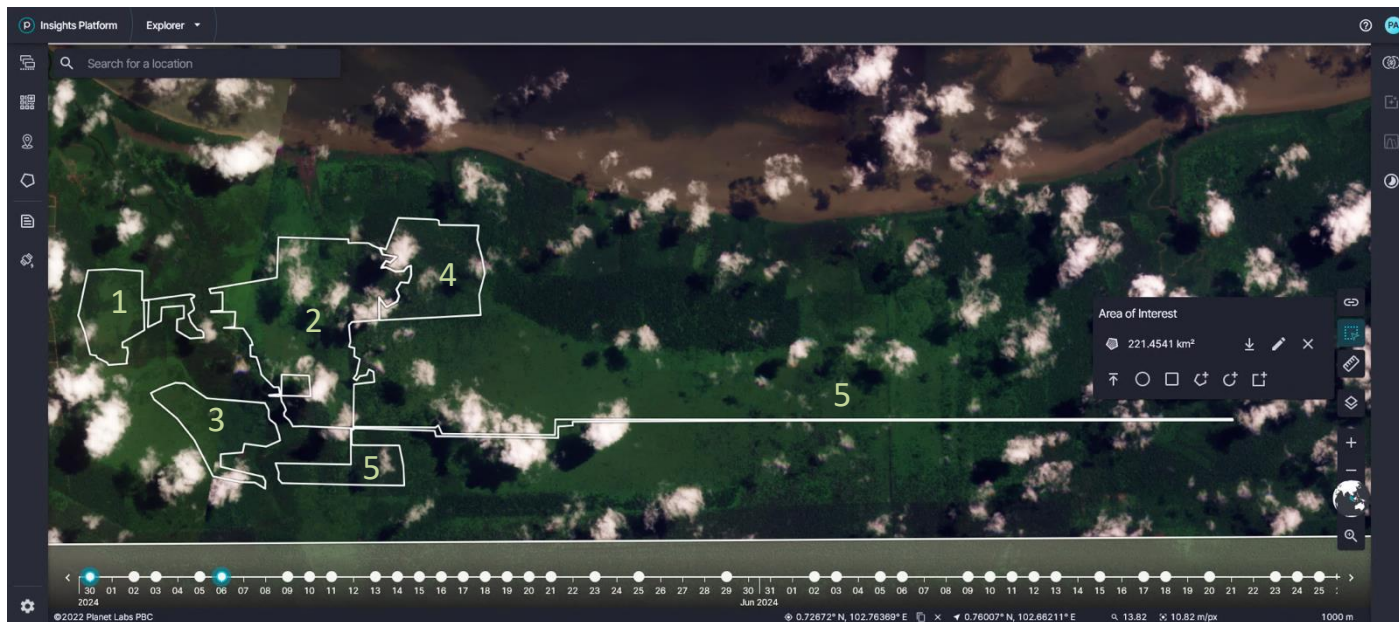
## *Western part of the PT Uniseraya concession*

The table and series of Planet images below shows areas of oil palm plantation expansion in the western part of the PT Uniseraya concession between April 30, 2024 and February 24, 2026.

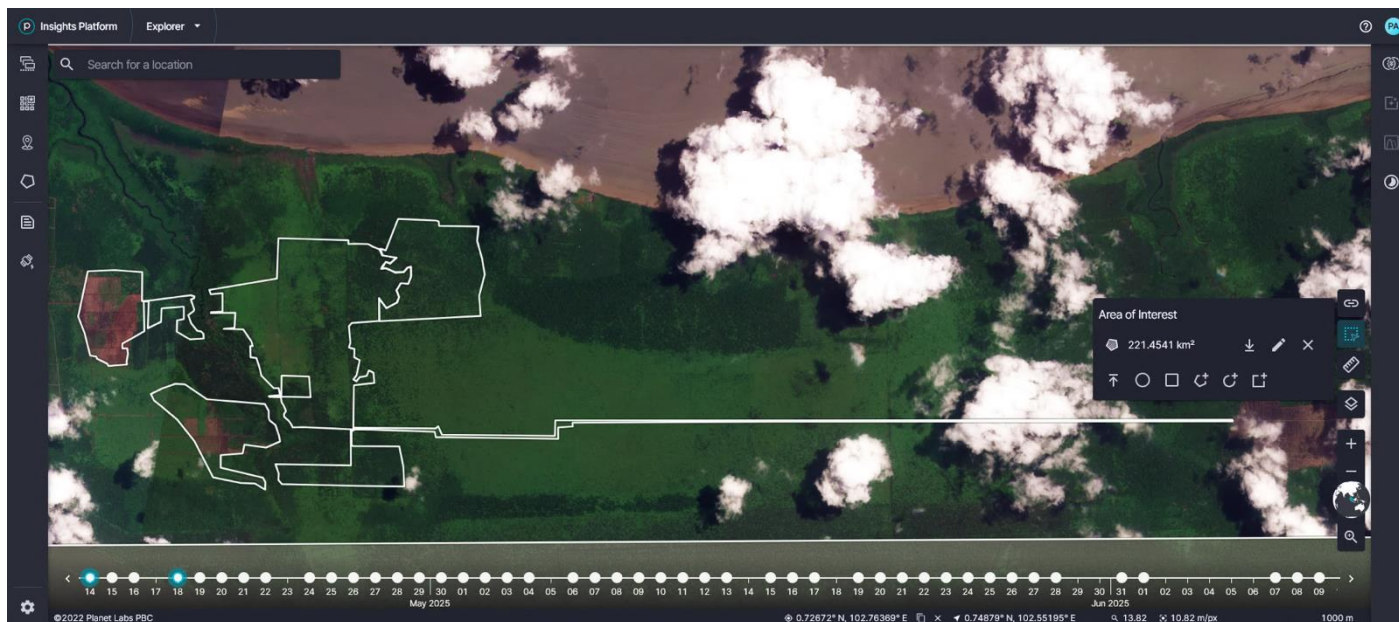
<b>Plantation expansion: Western part of the PT Uniseraya concession</b>					
<b>Area</b>	<b>Central Coordinates of Area</b>	<b>Peatland Deforestation (ha)</b>	<b>Plantation Development on Peatland (ha)</b>	<b>Drainage Canal Development on Peatland (ha)</b>	<b>Time Period</b>
<b>1</b>	<b>0.72571, 102.49648</b>		<b>132</b>		<i>April 30, 2024 and February 24, 2026</i>
<b>2</b>	<b>0.72491, 102.52229</b>		<b>442</b>		
<b>3</b>	<b>0.71022, 102.51128</b>		<b>131</b>		
<b>4</b>	<b>0.73200, 102.54016</b>			<b>184</b>	
<b>5</b>	<b>0.70477, 102.53104 / 0.71110 102.57888</b>			<b>115</b>	

# Mapping Analysis

**Planet Image: April 30, 2024**

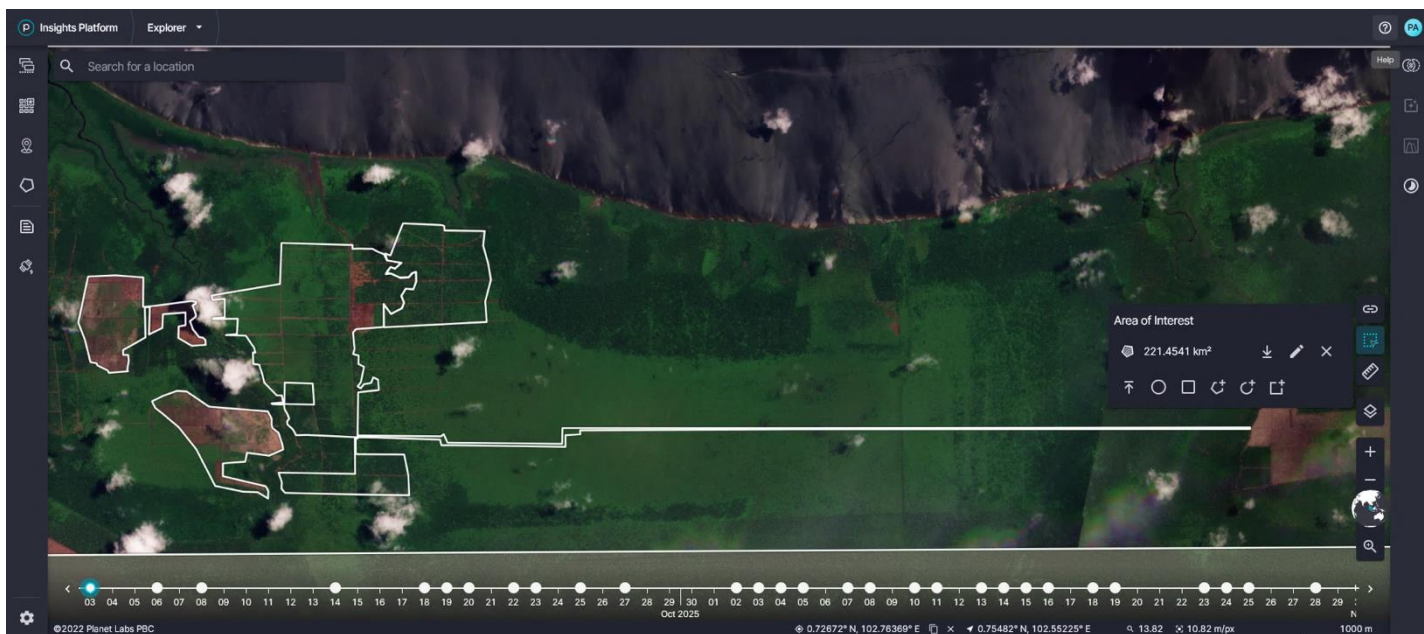


**Planet Image: April 14, 2025**

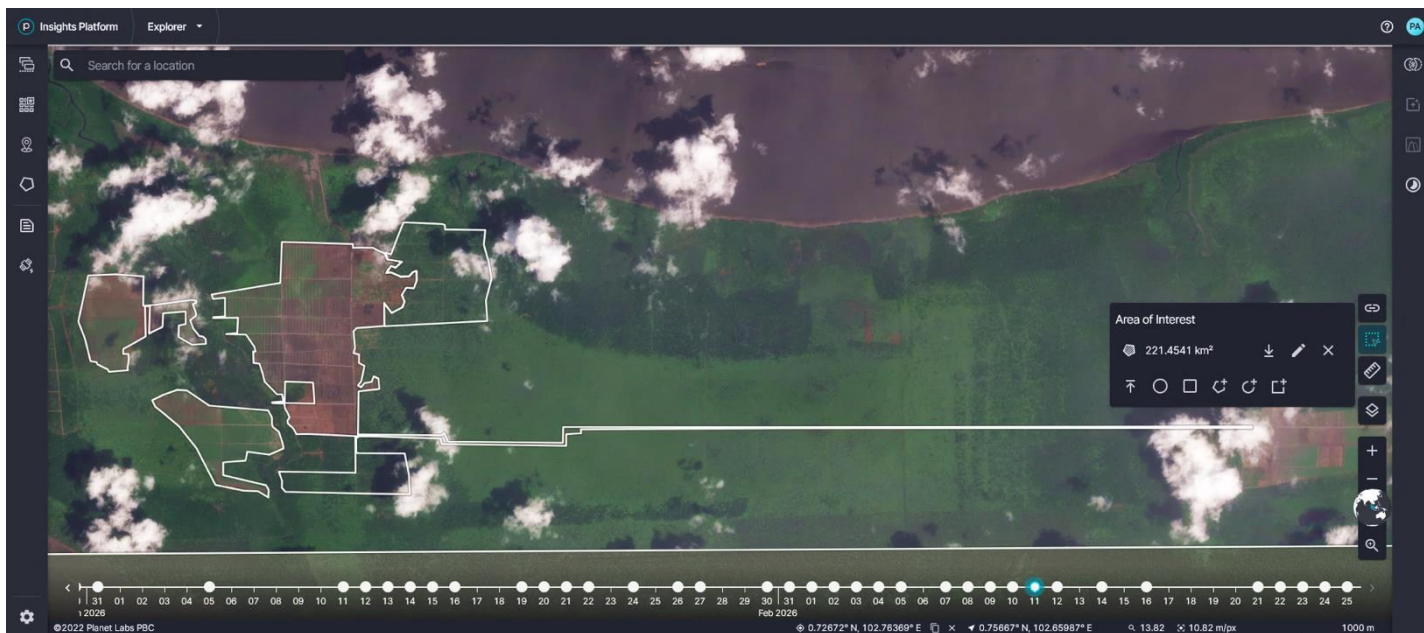


# Mapping Analysis

**Planet Image: September 3, 2025**



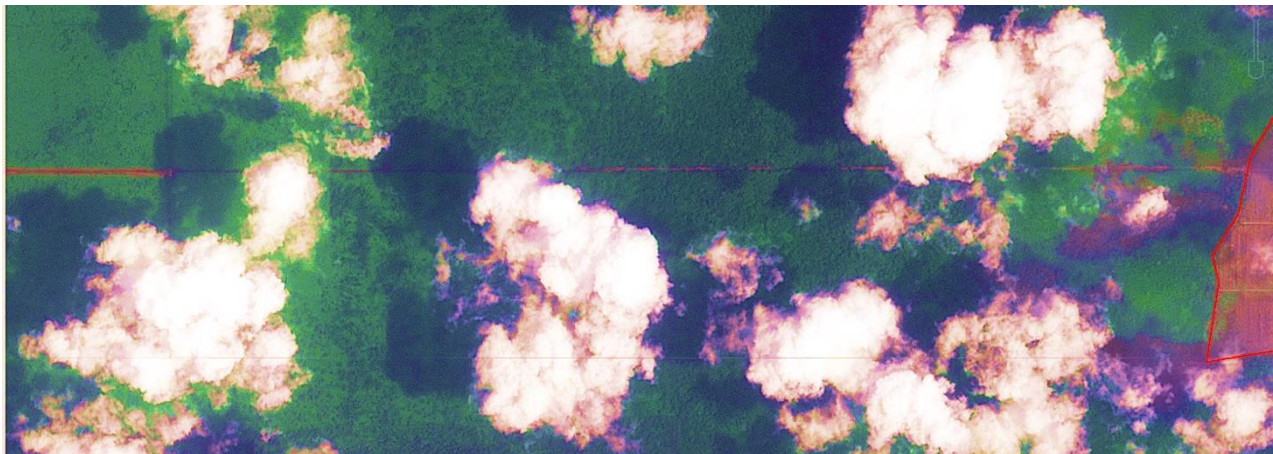
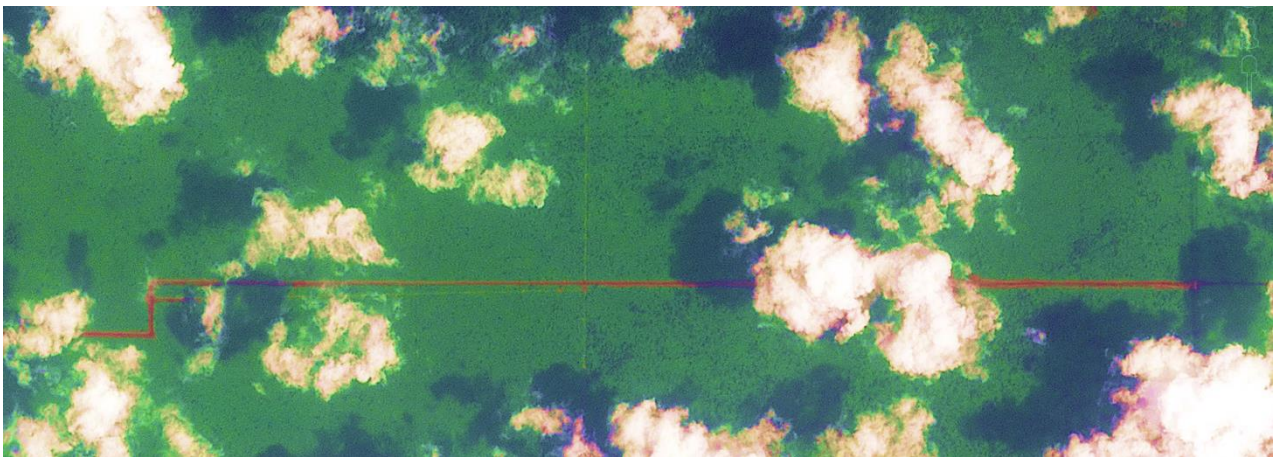
**Planet Image: February 11, 2026**



# Mapping Analysis

## ***Extensive peatland canal development connecting the western part of the concession to the eastern part of the concession***

The enhanced Planet imagery below shows that PT Uniseraya has excavated a peatland drainage canal extending over 13 kms across the middle of the concession, connecting the western part of the plantation development to the eastern part of the plantation development (0.709991°, 102.555535°).

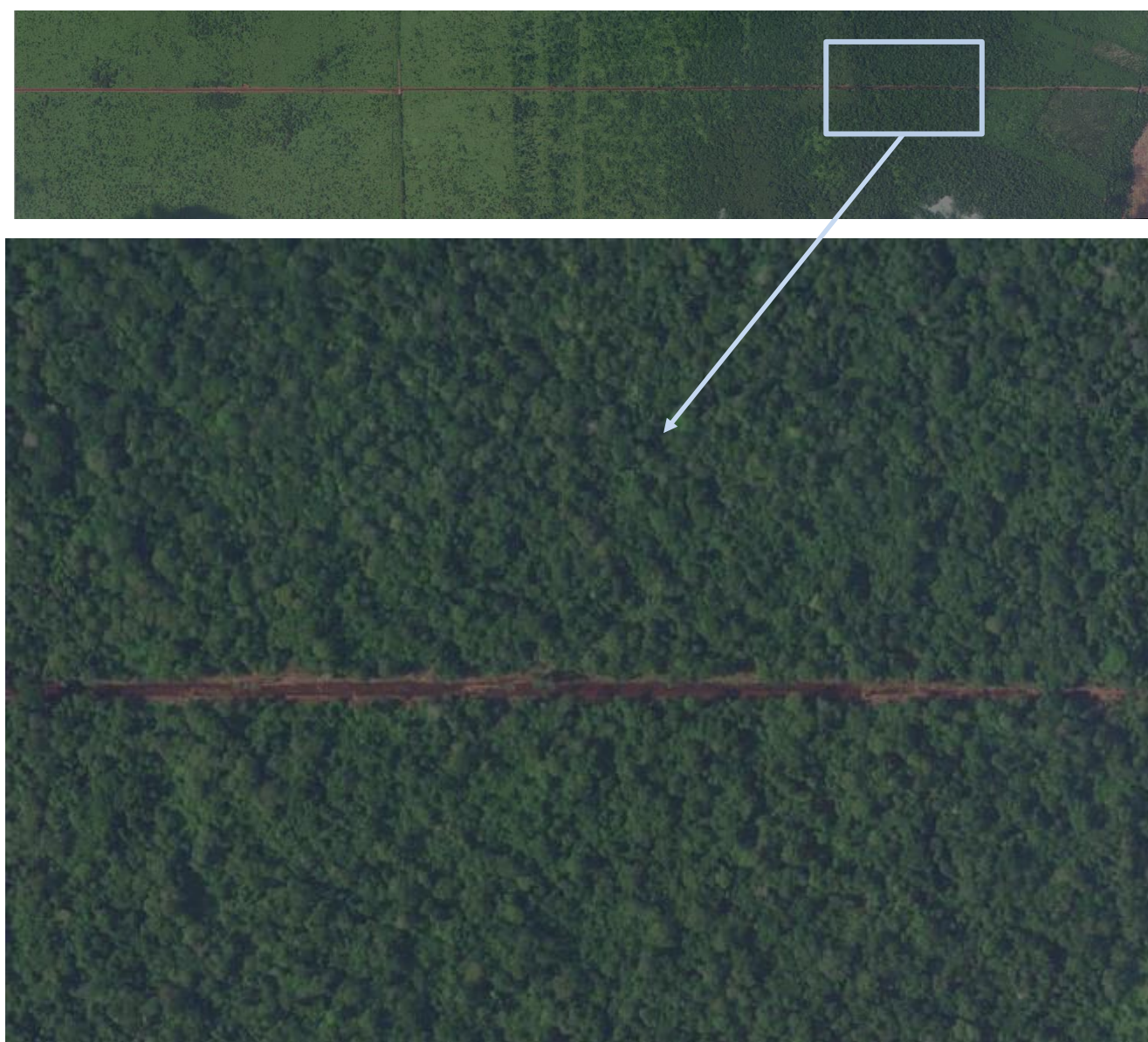


---

# Mapping Analysis

## ***Peatland canal development through a forest area connecting the eastern and western parts of the concession***

The high-resolution Planet images below, captured on February 28, 2026, shows peatland canal development connecting the eastern and western parts of the concession. The canal punches its way through an area of forest in the center of the concession (coordinates: 0.711278, 102.630848).





Follow Us: [LinkedIn](#) | [Twitter](#) | [Instagram](#)

---

1701 Rhode Island Avenue NW | Suite 3-123 | Washington, DC | 20036  
[www.mightyearth.org](http://www.mightyearth.org)