

RAPID RESPONSE

PALM OIL SECTOR REPORT 53



Prepared with
support from



December
2025

Table of Contents

→	01	PT Sepalar Yasa Kartika (Citra Borneo Indah Group)
→	09	PT Borneo Sawit Gemilang (Citra Borneo Indah Group)
→	16	PT Wira Usahtama Lestari (STH Group)
→	24	PT Antang Sawit Perkasa (Julong Group)

Supply Chain Information

Supply chain information included in Rapid Response reports is based on the latest public versions of mill disclosures, recent export data, and grievance logs. Mighty Earth encourages companies to send updated versions of mill disclosures as soon as they become available and to share any decision to suspend relations with a given group/company with rapidresponse@mightyearth.org.



New Case

Group: Citra Borneo Indah

PT Sepalar Yasa Kartika

Concession & Clearance Location: -3.05230°, 114.07989°

Deforestation and/or Peat Development					
Report	Deforestation (ha)	Area of Impact (ha)	Peatland Development (ha)	Tree Cover Loss (ha)	Time Period
53			567		December 2023 - May 2025

Planet satellite Imagery shows that between December 2023 and May 2025, there was a total of 567 ha of peatland development in the PT Sepalar Yasa Kartika concession.



Supply Chain Information

Company/Group	Traders	Biofuel/Other	Consumer Brands
Citra Borneo Indah Group	Bunge, Cargill, COFCO Int., IFFCO, KAO, Olam, Wilmar	Avril, BASF, Biesterfeld Spezialchemie, Ecogreen Oleochemicals, Galaxy Surfactants, Indorama, Innospec, Nikko Chemicals, Oleon, Sakamoto Yakuhin, Symrise, Zchimmer & Schwarz	Barry Callebaut, Beiersdorf, Flora Food Group, Friesland Campina, Grupo Bimbo, Hershey, Kellogg, Lion Corporation, L'Oreal, Meiji, Nisshin Oillio, Nestle, Pepsi, P&G, PZ Cussons

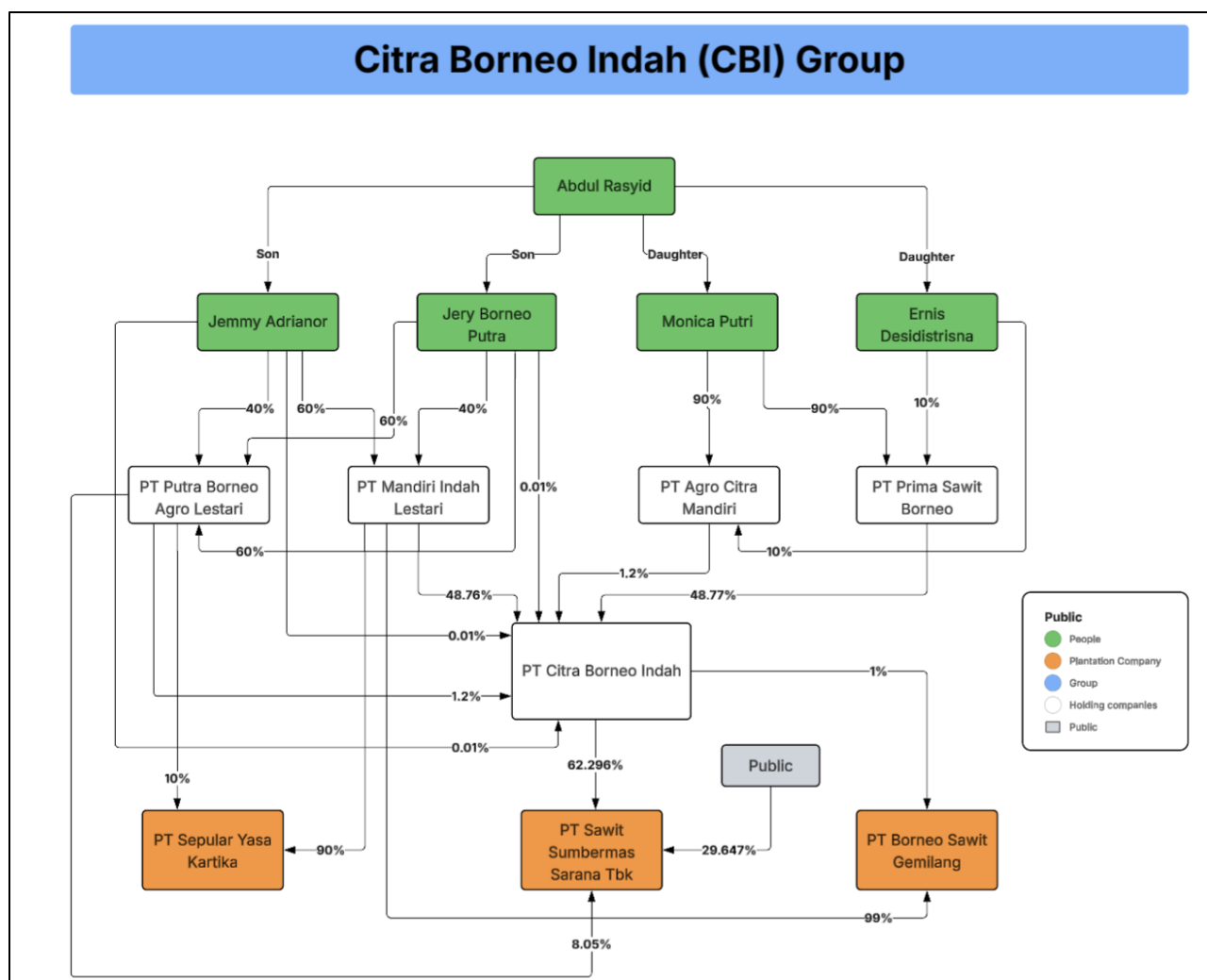


Case Notes and Evidence

Ownership Structure

PT Sepalar Yasa Kartika is listed under '*Entities under common control*' and as a 'related party' in the 2024 [Financial Statements](#) of PT Sawit Sumbermas Sarana Tbk. PT Sepalar Yasa Kartika is under common control because it is ultimately owned, via PT Mandiri Indah Lestari, by Jemmy Adrianor (58%) and Jery Borneo Putra (42%). These are the two sons of Abdul Rasyid, the founder of PT Citra Borneo Indah and PT Sawit Sumbermas Sarana Tbk.

PT Mandiri Indah Lestari controls 90% of shares in PT Sepalar Yasa Kartika and 48.76% shares in PT Citra Borneo Indah, which is the controlling shareholder (62.29%) of PT Sawit Sumbermas Sarana Tbk. See corporate ownership diagram below.



Case Notes and Evidence

PT Sepalar Yasa Kartika sales to PT Sawit Sumbermas Sarana Tbk

In 2024, PT Sawit Sumbermas Sarana Tbk purchased Rp 136.715 trillion (US \$10.5 million) worth of 'commodities' from PT Sepalar Yasa Kartika, according to PT Sawit Sumbermas Sarana Tbk's 2024 Financial Statements. The same document states that the 'related party' transactions for PT Sepalar Yasa Kartika are for '*Payments on behalf of the related party, assistance service, and purchase of fresh fruit bunches.*'

Mighty Earth therefore assumes that PT Sepalar Yasa Kartika is a supplier of palm oil to PT Sawit Sumbermas Sarana.

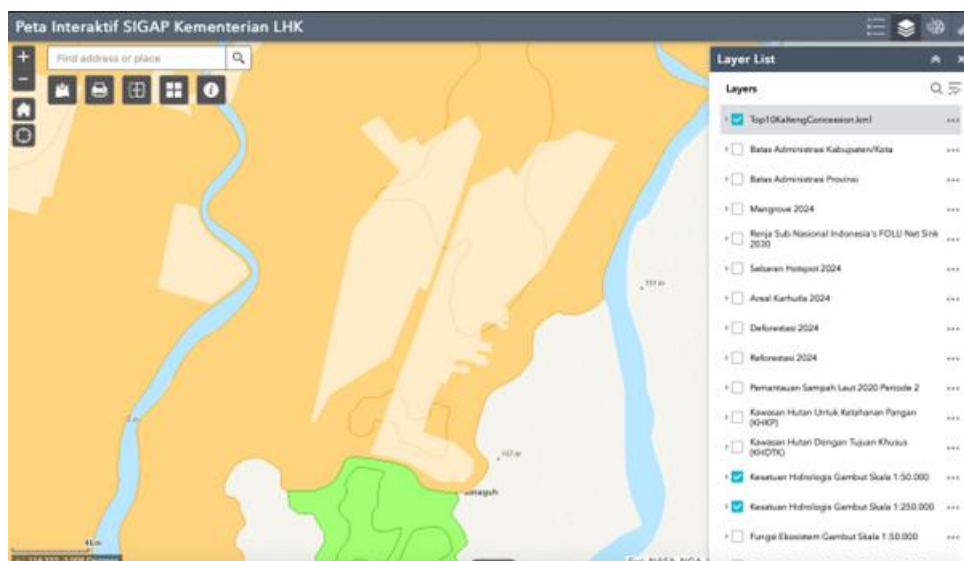
Pembelian Komoditas Entitas yang memiliki pengaruh signifikan terhadap Kelompok Usaha			Purchase Commodity Entity which has significant influence to the Group
PT Citra Borneo Indah	442.867.399	516.709.532	22.105.125
Entitas berelasi lainnya			Entities under common control
PT Sepalar Yasa Kartika	136.715.202	114.046.748	88.583.116
PT Borneo Sawit Gemilang	72.646.666	81.419.725	59.563.685
PT Natar Sawit Perkasa	53.307.636	53.344.350	61.164.590
	705.537.103	765.520.355	231.416.524
Total beban pokok penjualan (Catatan 29)	7.242.040.109	7.904.355.885	6.936.789.797
			Total cost of sales (Note 29)

According to an [RSPO P&C Public Summary Report](#) (November 2023), the PT Menteng Kencana Mas Kanamit palm oil mill (PO1000015839), owned by PT Sawit Sumbermas Sarana, sourced Fresh Fruit Bunches (FFB) from PT Sepalar Yasa Kartika '*during 2022 up to July 2023.*'



Mapping Analysis

Overlaying the PT Sepalar Yasa Kartika concession with 'Peatland Ecosystem Function' maps published [online by the Ministry of Environment and Forestry \(MoEF\)](#) shows that the entire PT Sepalar Yasa Kartika concession is located on a 'Peatland Hydrological Unit' (Kesatuan Hidrologis Gambut). The green areas are classified as 'Indicative Function - Forest' and the darker yellow areas are classified as 'Indicative Function - Cultivation.'



The map below shows concession boundaries (white outlines) and the areas of peatland developed between December 2023 and March 2025 (red outlines).



Mapping Analysis

The Google image below, dated October 2023, shows the landcover of the peatland areas before they were developed (red outline). Coordinates of the middle area are: -3.10112°, 114.25026°



The Planet satellite images on the following page show that between December 2023 and May 2025, at least 567 ha of peatland development took place in the PT Sepalar Yasa Kartika concession. The coordinates of the larger area are: -3.05230°, 114.07989°.

Established plantation areas can be seen between the peatland drainage canals in the area above and below the middle.



Mapping Analysis

Planet: December 2023



Planet: January 2024



Mapping Analysis

Planet: May 2024



Planet: May 2025



New Case

Group: Citra Borneo Indah

PT Borneo Sawit Gemilang

Concession & Clearance Location: -3.05230°, 114.07989°

Deforestation and/or Peat Development					
Report	Deforestation (ha)	Area of Impact (ha)	Peatland Development (ha)	Tree Cover Loss (ha)	Time Period
53			107		August 2023 - October 2025

Planet satellite Imagery shows that between August 2023 and October 2025, there was a total of 107 ha of peatland development in the PT Borneo Sawit Gemilang concession.



Supply Chain Information

Company/Group	Traders	Biofuel/Other	Consumer Brands
Citra Borneo Indah Group	Bunge, Cargill, COFCO Int., IFFCO, KAO, Olam, Wilmar	Avril, BASF, Biesterfeld Spezialchemie, Ecogreen Oleochemicals, Galaxy Surfactants, Indorama, Innospec, Nikko Chemicals, Oleon, Sakamoto Yakuhin, Symrise, Zchimmer & Schwarz	Barry Callebaut, Beiersdorf, Flora Food Group, Friesland Campina, Grupo Bimbo, Hershey, Kellogg, Lion Corporation, L'Oreal, Meiji, Nisshin Oillio, Nestle, Pepsi, P&G, PZ Cussons

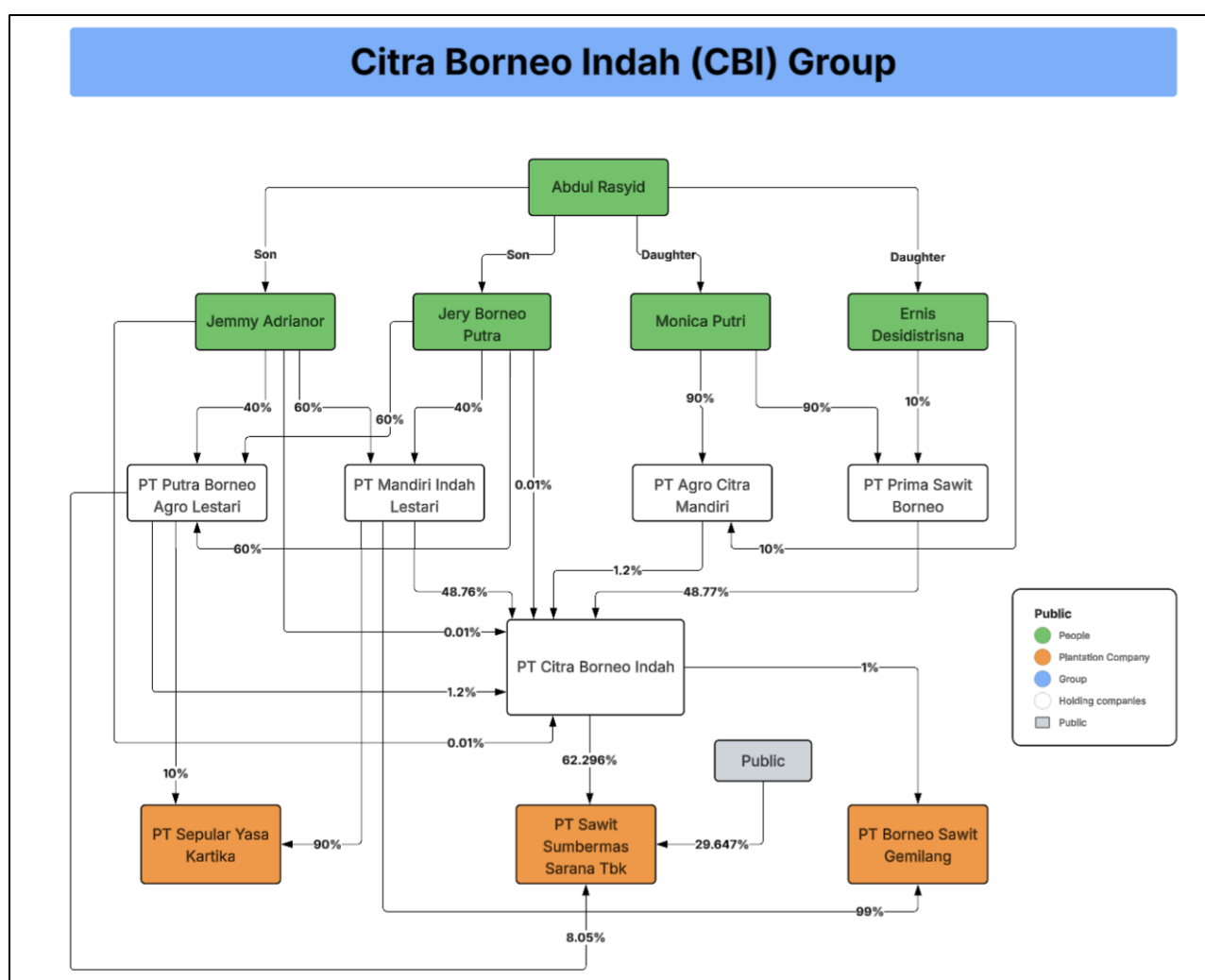


Ownership Structure

PT Borneo Sawit Gemilang is listed under 'Entities under common control' and as a 'related party' in the 2024 [Financial Statements](#) of PT Sawit Sumbermas Sarana Tbk.

PT Borneo Sawit Gemilang is under common control because it is ultimately owned, via PT Mandiri Indah Lestari, by Jemmy Adrianor (58%) and Jery Borneo Putra (42%). They are the two sons of Abdul Rasyid, the founder of PT Citra Borneo Indah and PT Sawit Sumbermas Sarana Tbk.

PT Mandiri Indah Lestari controls 99% of the shares in PT Borneo Sawit Gemilang and 48.76% of shares in PT Citra Borneo Indah, the controlling shareholder (62.29%) of PT Sawit Sumbermas Sarana Tbk. See corporate ownership diagram below.



Ownership Structure

In 2024, PT Sawit Sumbermas Sarana Tbk purchased Rp 72,646 trillion (US \$ 4.35 million) worth of 'commodities' from PT Borneo Sawit Gemilang, according PT Sawit Sumbermas Sarana Tbk's 2024 [Financial Statements](#).

The same document states that the 'related party' transactions for PT Borneo Sawit Gemilang are for 'Sales of FFB, and payment on behalf of the related party.'

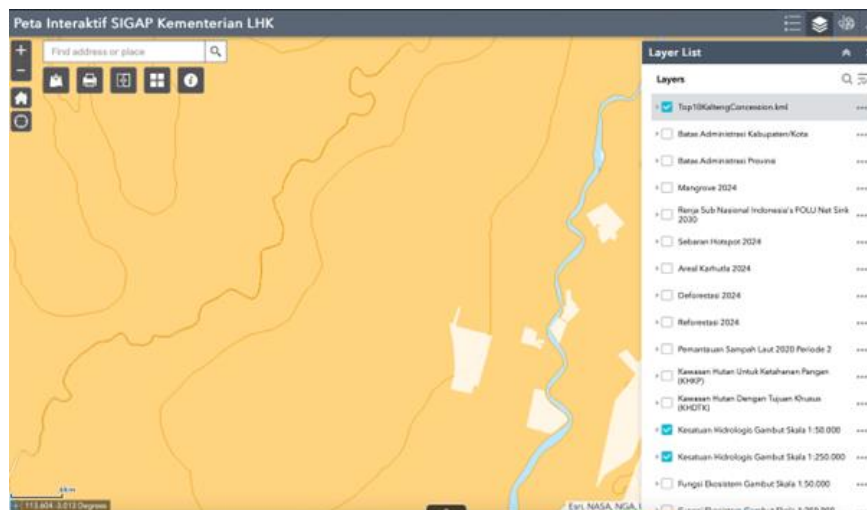
Mighty Earth therefore assumes that PT Borneo Sawit Gemilang is a supplier of palm oil to PT Sawit Sumbermas Sarana.

Pembelian Komoditas				Purchase Commodity	
Entitas yang memiliki pengaruh signifikan terhadap Kelompok Usaha				Entity which has significant influence to the Group	
PT Citra Borneo Indah				PT Citra Borneo Indah	
	442.867.399	516.709.532	22.105.125		
Pihak berelasi lainnya				Entities under common control	
PT Sepalar Yasa Kartika				PT Sepalar Yasa Kartika	
	136.715.202	114.046.748	88.583.116		
PT Borneo Sawit Gemilang				PT Borneo Sawit Gemilang	
	72.646.666	81.419.725	59.563.685		
PT Natar Sawit Perkasa				PT Natar Sawit Perkasa	
	53.307.836	53.344.350	61.164.596		
	705.537.103	765.520.355	231.416.524		



Mapping Analysis

Overlaying the PT Borneo Sawit Gemilang concession (pale orange) with the 'Peatland Ecosystem Function' maps published [online by the Ministry of Environment and Forestry \(MoEF\)](#) shows that the entire PT Sepalar Yasa Kartika concession is located on a 'Peatland Hydrological Unit' (Kesatuan Hidrologis Gambut). The darker yellow areas are classified as 'Indicative Function - Cultivation.'



The Google image below shows concession boundaries (white outlines) and the areas of peatland developed between August 2023 and October 2025 (red outlines).

Peatland drainage canals can be seen in the large areas. The coordinates of the area are: -3.05230°, 114.07989°



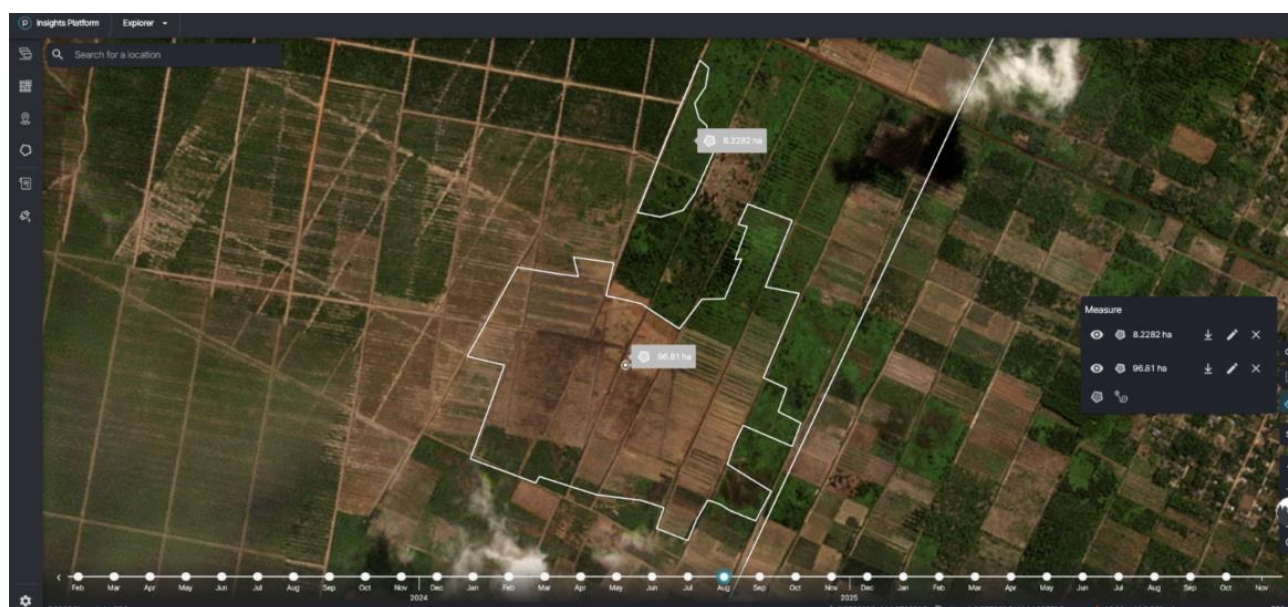
Mapping Analysis

The Planet satellite images below show that at least 107 ha of peatland development took place in the PT Borneo Sawit Gemilang concession between August 2023 and October 2025.

Planet: August 2023

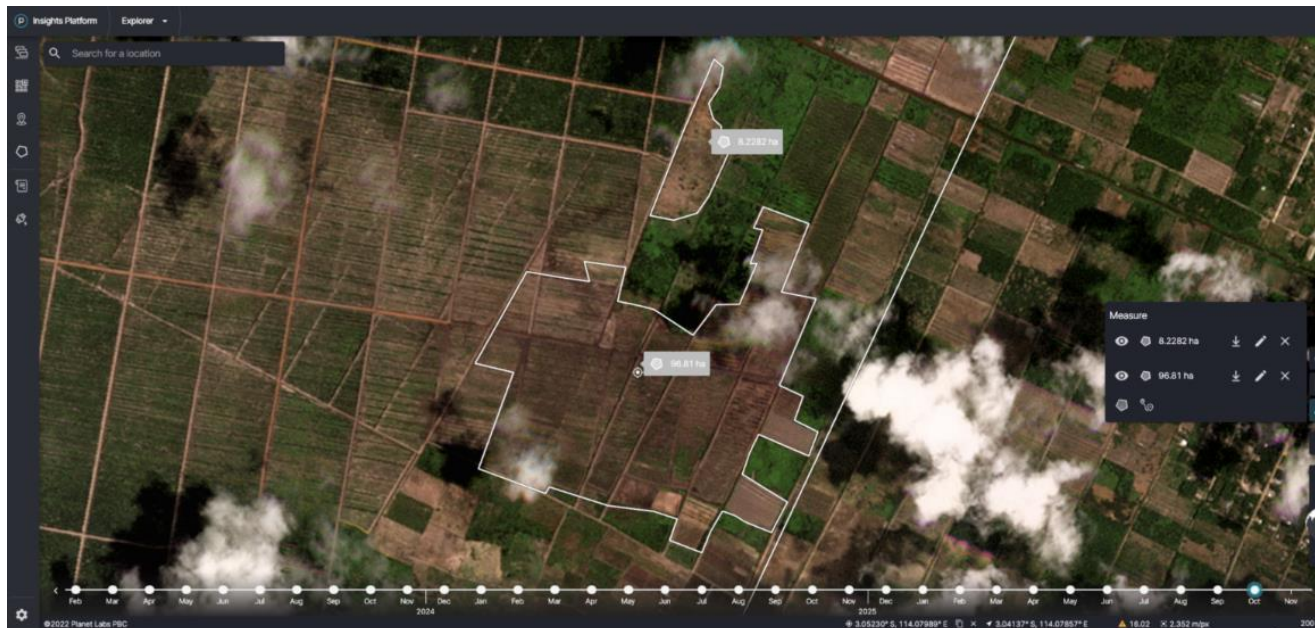


Planet: August 2024



Mapping Analysis

Planet: October 2025



New Case

Group: STH Group

PT Wira Usahatama Lestari

Concession & Clearance Location: -2.87591°, 114.43864°

Deforestation and/or Peat Development					
Report	Deforestation (ha)	Area of Impact (ha)	Peatland Development (ha)	Tree Cover Loss (ha)	Time Period
53			2,511		June 2022 - September 2025

Planet satellite Imagery shows that between June 2022 and September 2025, there was a total of 2,511 ha of peatland development in the PT Wira Usahatama Lestari concession.



Supply Chain Information

Company/Group	Traders	Biofuel/Other	Consumer Brands
STH Group	AAK, ADM, Apical, BASF, Cargill, COFCO Int., Fuji Oil, GAR, IFFCO, Itochu, KAO, KLK, LDC, Olam, Pacific Inter-Link (PIL), SD Guthrie International, Wilmar	Avril, BASF, Biesterfeld Spezialchemie, Lipidos, Galaxy Surfactants, Indorama, Nikko Chemicals, Olenex, Oleon, Permata Hijau, Sakamoto Yakuhin, Sinarmas Cepsa, Stearinerie Dubois, Symrise, Zchimmer & Schwarz	Avon, Barry Callebaut, Beiersdorf, Colgate, Flora Food Group, General Mills, Grupo Bimbo, Hershey, Johnson & Johnson, Kellogg, Lion Corporation, Meiji, Mondalez, Nestle, Nisshin Oillio, PepsiCo, P&G, PZ Cussons

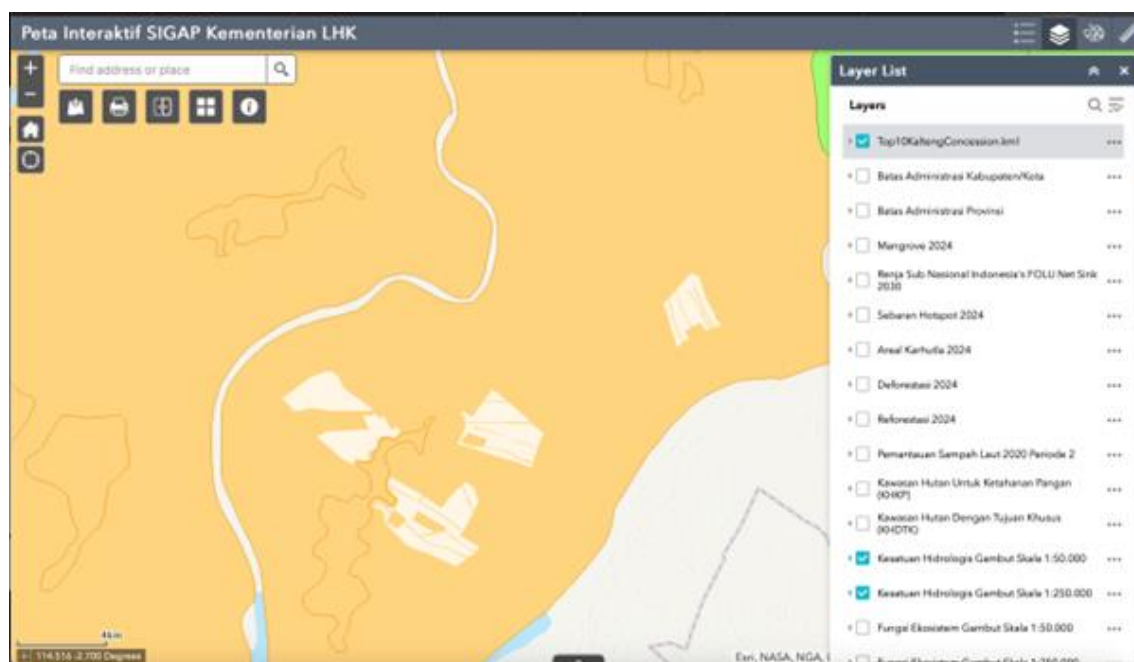
Ownership Structure

PT Wira Usahatama Lestari is part of the Sin Tek Huat Group (STH Group), which is controlled by Rusim Wijaya.



Mapping Analysis

Overlaying the PT Wira Usahatama Lestari HGU concession boundaries with 'Peatland Ecosystem Function' maps published [online by the Ministry of Environment and Forestry \(MoEF\)](#) shows that the entire PT Wira Usahatama Lestari HGU boundaries are located on a 'Peatland Hydrological Unit' (Kesatuan Hidrologis Gambut). The darker yellow areas are classified as 'Indicative Function - Cultivation.'



The series of 4 Planet satellite images on the following page shows that at least 2,511 ha of peatland development took place in the PT Wira Usahatama Lestari concession between June 2022 and September 2025.

Mighty Earth assumes that the area developed is all part of peatland development for oil palm by PT Wira Usahatama Lestari. See below an example of high resolution Planet imagery from November 1, 2025 showing oil palm trees planted in the concession.



Mapping Analysis

Planet: June 2022 (coordinates: -2.87591°, 114.43864°)



Planet: January 2024 (coordinates: -2.87591°, 114.43864°)



Mapping Analysis

Planet: July 2024



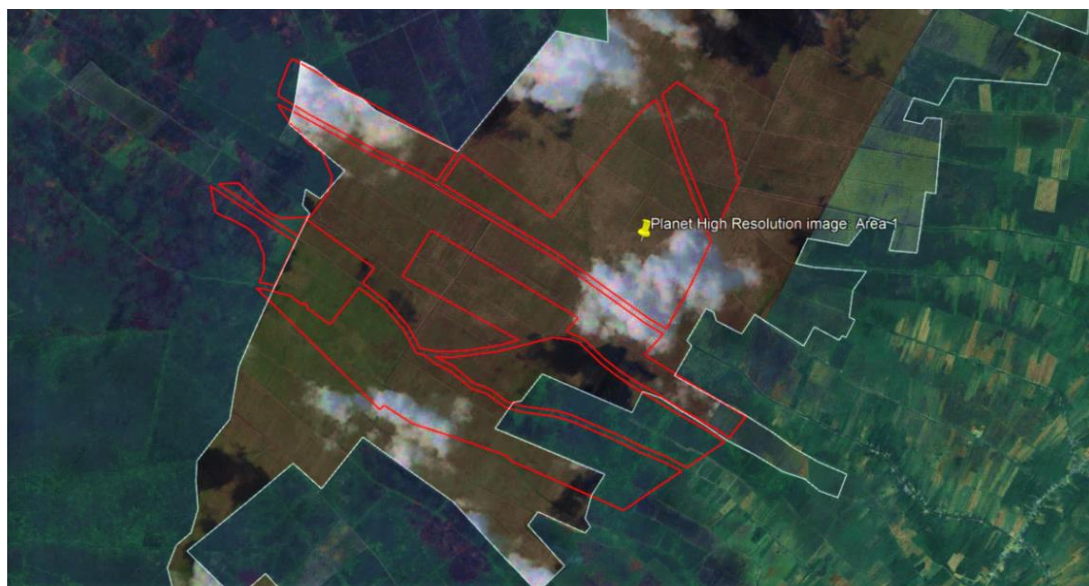
Planet: September 2025



Mapping Analysis

The image below shows one of the available HGU concession boundaries (red outline) for PT Wira Usahatama Lestari (white outline), which significantly overlaps with the 2,511-hectare area of peatland development highlighted above.

Area 1 example: The Planet high resolution imagery below (from November 1, 2025) shows an example area (yellow tag) of oil palm planting in the concession.

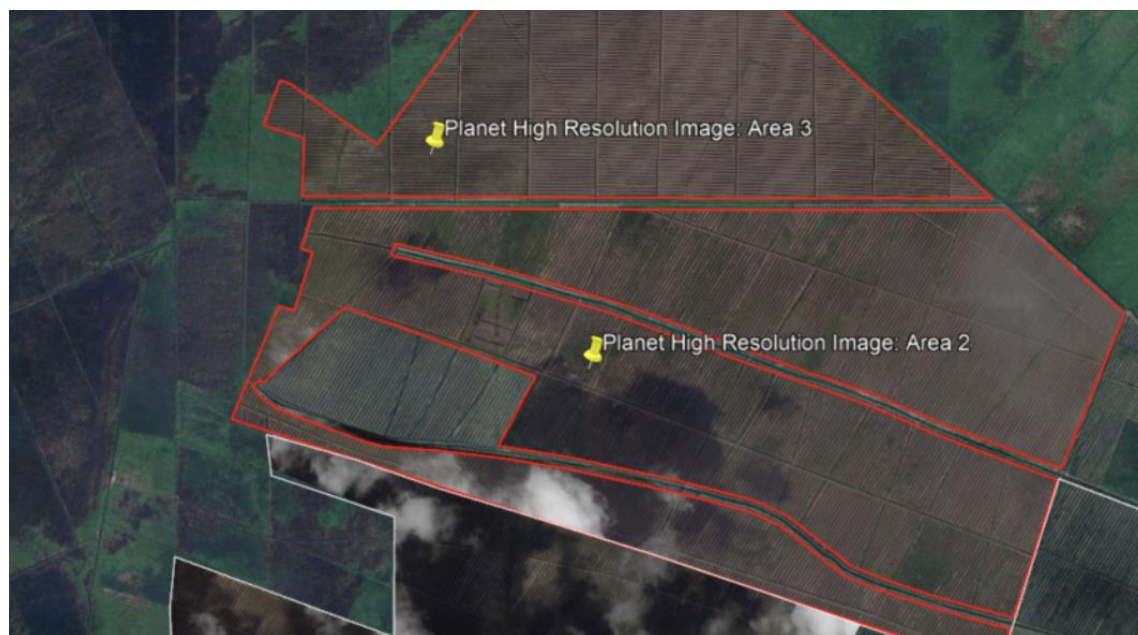


The Planet High Resolution image (coordinates: -2.873896°, 114.448764°) below shows young oil palm trees have been planted in the developed peatland areas, confirming that the peatland development is for oil palm.



Mapping Analysis

Area 2 example: The map below shows an additional HGU area immediately to the north of the 2,511-hectare area. This area was cleared before 2022. The Planet High Resolution imagery (from November 1, 2025) confirms that the peatland development is for oil palm.



Area 2: Planet High Resolution image (November 1, 2025) below shows young oil palm trees have been planted in the peatland areas (coordinates: -2.844517°, 114.461953°).



Mapping Analysis

Area 3: Planet High Resolution image (from November 1, 2025) below shows young oil palm trees have been planted in the peatland areas (coordinates: -2.836382° , 114.455936°).



New Case

Group: Tianjin Julong (Julong Group)

PT Antang Sawit Perkasa

Concession & Clearance Location: : -2.57158°, 114.22814°

Deforestation and/or Peat Development					
Report	Deforestation (ha)	Area of Impact (ha)	Peatland Development (ha)	Tree Cover Loss (ha)	Time Period
53			185		January 2023 - September 2025

Planet satellite Imagery shows that between January 2023 and September 2025, there was a total of 185 ha of peatland development in the PT Antang Sawit Perkasa concession.



Supply Chain Information

Company/Group	Traders	Biofuel/Other	Consumer Brands
Tianjin Julong	AAK, Bunge, ADM, Apical, Cargill, COFCO Int., Fuji Oil, GAR, IFFCO, KAO, KLK, Oleon, SD Guthrie, Wilmar	Avril, BASF, Biesterfeld Spezialchemie, Galaxy Surfactants, Indorama, Neste, Nikko Chemicals, Olam, Sakamoto Yakuhin, Stearinerie Dubois, Symrise	Avon, Beiersdorf, Biesterfeld Spezialchemie, Flora Food Group, General Mills, Grupo Bimbo, Hershey, Kellogg, Lion Corporation, Meiji, Mondelez, Nestle, Nissin Oillio, Pepsi, P&G, PZ Cussons

Ownership Structure

PT Antang Sawit Perkasa is part of the Tianjin Julong (Julong Group), which is controlled by Yang Gung.



Mapping Analysis

Overlaying the PT Antang Sawit Perkasa concession boundaries with 'Peatland Ecosystem Function' maps published [online by the Ministry of Environment and Forestry \(MoEF\)](#) shows that the boundaries are located on a 'Peatland Hydrological Unit' (Kesatuan Hidrologis Gambut). The darker yellow areas are classified as 'Indicative Function - Cultivation.'



The map below shows the IUP (Plantation Business Permit) concession boundary as of 2017 (white outline) and HGU boundaries as of 2020. The coordinates of the impact area are: -2.57158° , 114.22814° . It is assumed that the 185 ha area of peatland development (red outline) is for oil palm expansion by PT Antang Sawit Perkasa.



Mapping Analysis

The series of Planet satellite imagery below shows the development of 185 ha between January 2023 and September 2025. Coordinates: -2.57158° , 114.22814°

Planet: January 2023 (Coordinates: -2.57158° , 114.22814°)



Planet: June 2023 (Coordinates: -2.57158° , 114.22814°)

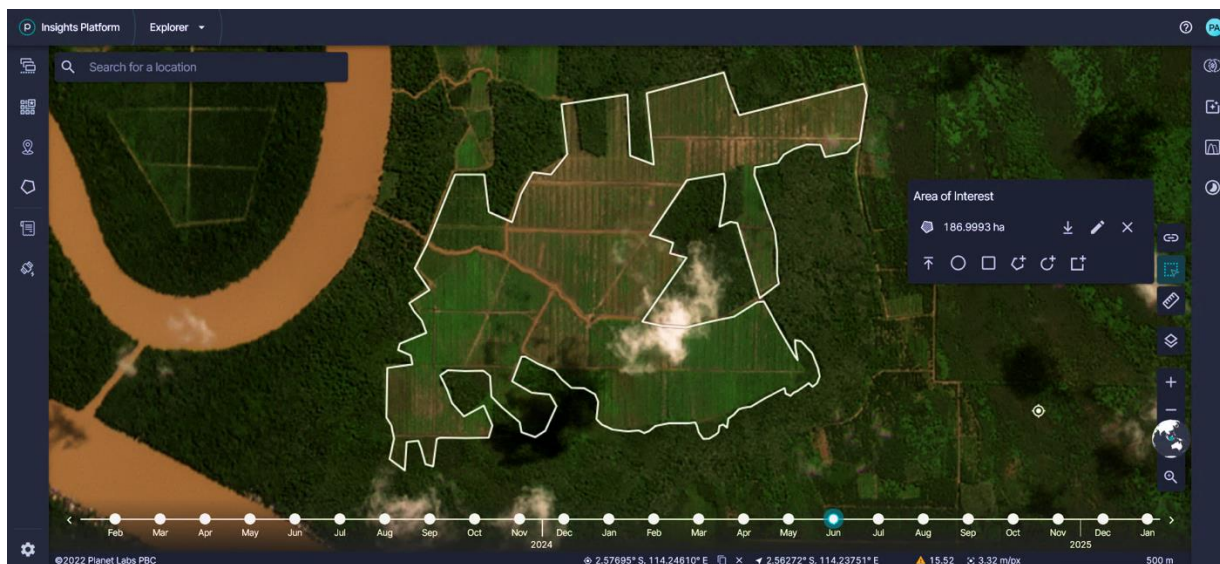


Mapping Analysis

Planet: November 2023



Planet: September 2025



Mapping Analysis

The Google image below shows planted oil palm areas of peatland with drainage canals in the PT Antang Sawit Perkasa concession .





Follow Us: [LinkedIn](#) | [Twitter](#) | [Instagram](#)

1701 Rhode Island Avenue NW | Suite 3-123 | Washington, DC | 20036
www.mightyearth.org