



MIGHTY EARTH



# RAPID RESPONSE

## Palm Oil Report

Report 47

January 2025



Prepared with support from



# Table of Contents

## Cases identified using Landsat and Planet imagery

### Indonesian Companies

#### *New Cases*

PT Tunas Hutan Mandiri: Jhonlin Group affiliated

3

### Supply chain information:

Supply chain information included in Rapid Response reports is based on the latest public versions of mill disclosures, recent export data, and grievance logs. Mighty Earth encourages companies to send updated versions of mill disclosures as soon as they become available and to share any decision to suspend relations with a given group/company listed in those mill disclosures with [rapidresponse@mightyearth.org](mailto:rapidresponse@mightyearth.org).

Mighty Earth is now including biofuel companies in the supply chain tables of Rapid Response reports, as these companies have both direct and indirect trading relationships with groups highlighted in these reports and should be filing grievances on these cases. These biofuel companies are listed in the "Supply Chain Information" tables.

# New Case

## Group: Jhonlin Group

PT Tunas Hutan Mandiri (affiliated to Jhonlin)

Concession & clearance location: -3.681 116.14

### Deforestation and/or peat development

Report	Deforestation (ha)	Integrated Deforestation Alerts (ha)	Peat forest development (ha)	Tree Cover Loss (ha)	Time period
<a href="#">Earthqualiser</a> report assessing Jhonlin's total deforestation liability	20,000+ ha				January 2016 - December 2021
Report 47			-	8,480 ha	January 2023 - December 2023
		1,530 ha	-	-	January 1, 2024 - January 21, 2025

GIS Imagery (see p.5) shows that between January 2023 and December 2023, there was a total of 8,780 ha of Tree Cover Loss (75% canopy density) in the PT Tunas Hutan Mandiri concession (Area of Interest only).

Further, during the time between January 1, 2024 and January 21, 2025, there were a total of 1,530 ha of Integrated Deforestation Alerts. (source: [Global Forest Watch](#))

## Supply Chain Information

Company/Group	Traders	Biofuel/Other	Consumer Brands
<b>Jhonlin Group</b>	ADM (Not suspended), COFCO International (Not suspended)	AKR Corporindo Tbk (Not suspended), Exxon Mobile Lubricants Indonesia (Not suspended), KPN (Suspended), Symrise (Not suspended), Vance Bioenergy (Not suspended)	Barry Callebaut (Suspended), Kellogg (Not suspended), Mondelēz (Not suspended, investigating)
<b>Jhonlin Group</b> through PT Tunas Hutan Mandiri			
<b>Jhonlin Group</b> through PT Adisurya Cipta Lestari		Biesterfeld Spezialchemie (Not suspended, investigating), Symrise (Not suspended)	Barry Callebaut (Suspended, investigating)
<b>Jhonlin Group</b> through PT Batulicin Agro Sentosa	COFCO International (Not suspended)	Biesterfeld Spezialchemie (Not suspended, investigating), Symrise (Not suspended)	Barry Callebaut (Suspended, investigating), Mondelēz (Not suspended, investigating)
<b>Jhonlin Group</b> through PT Pradiksi Gunatama	ADM (Not suspended), COFCO International (Not suspended)	Biesterfeld Spezialchemie (Not suspended, investigating), Symrise (Not suspended)	Barry Callebaut (Suspended), Kellogg (Not suspended), Mondelēz (Not suspended, investigating)

Many NDPE palm oil companies have placed the Jhonlin group on their 'No Buy' lists due to instances of NDPE noncompliance, including GAR, Sime Darby, AAK, Bunge, Cargill, KPN, Sime Darby and Barry Callebaut, Colgate, Hersheys, Pepsico, and Unilever.

Those listed above as "suspended" were communicated by the company to Mighty Earth. Those listed as 'not suspended' either have not suspended or the company did not reply to our inquiry.

The supply chain information in the table above uses data from public mill lists or other public data to determine which traders and consumer brands source from companies connected to the Jhonlin Group

## Group Ownership Information and Case Notes

The Jhonlin Group was founded by the coal and palm oil magnate Haji Syamsudin Andi Arsyad (aka 'Haji Isam'). He controls [77,125% of the shares](#) in Jhonlin Agro Raya Tbk through PT Jhonlin Group and PT Eshan Agro Sentosa (EAS Group).

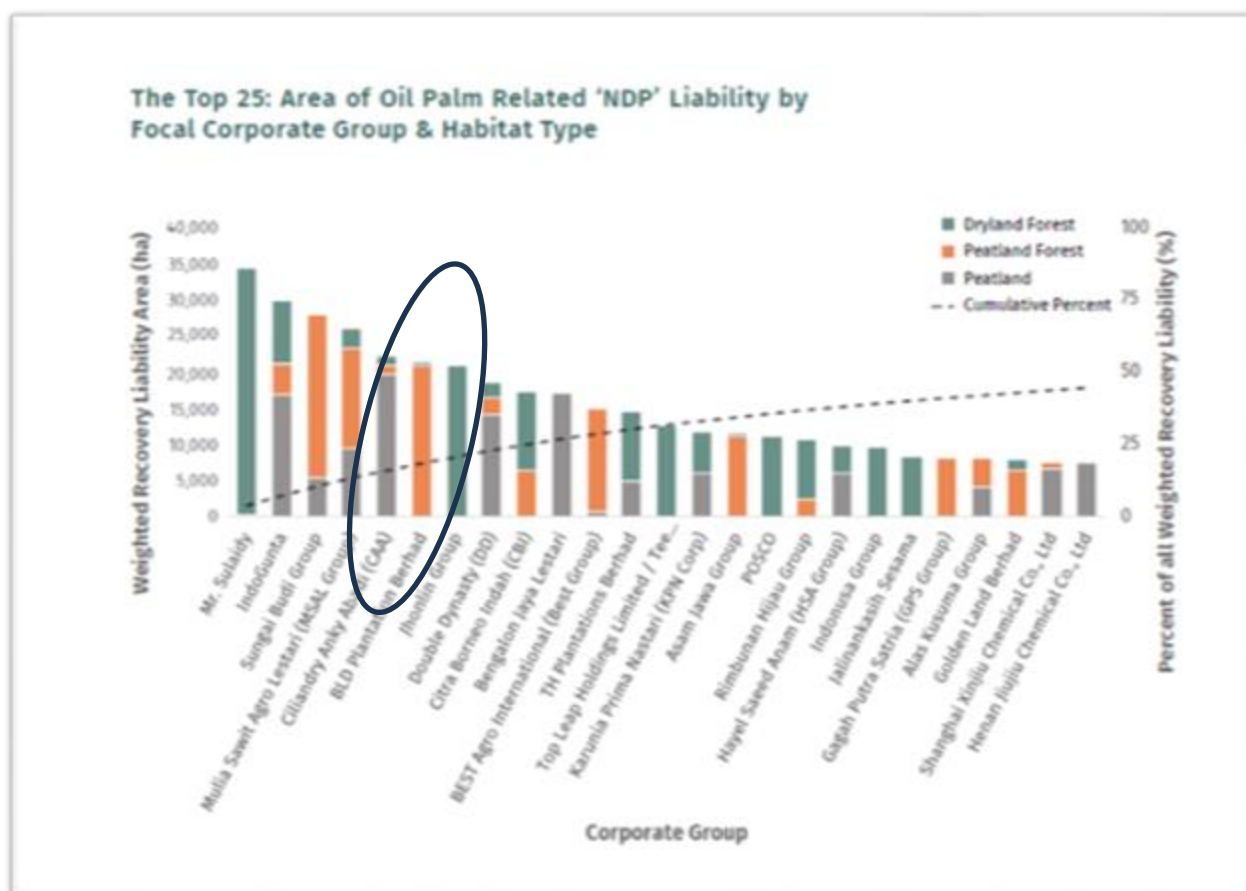
PT Tunas Hutan Mandiri is 40% owned by [Ilham Rusydi](#), a member of Jhonlin Agro Raya Tbk's Audit Committee. He is also Head of Finance & Administration Department of PT Jhonlin Agri Mandiri, a '*related party*' to, and shareholder in, Jhonlin Agro Raya Tbk.

The remaining 60% are owned by Myung Seob Shin, a Director of PT Jhonlin Agri Mandiri.

While the deforestation in PT Tunas Hutan Mandiri is not assumed as related to oil palm plantation development, its neighbouring concession PT Multi Sarana Agro Mandiri has an estimated deforestation liability between 2016–2020, amounting to 8,986 hectares.

Further, Jhonlin Group was estimated by [Earthqualiser](#) to have a total deforestation liability of over 20,000 ha between 2016 and 2021. This includes liabilities in its subsidiaries IPT Kurun Sumber Rezeki, PT Gumas Alam Subur, PT Jhonlin Agro Raya, PT Jhonlin Agro Lestari, PT Senabangun Anekapertiwi and PT Prediction Gunatama.

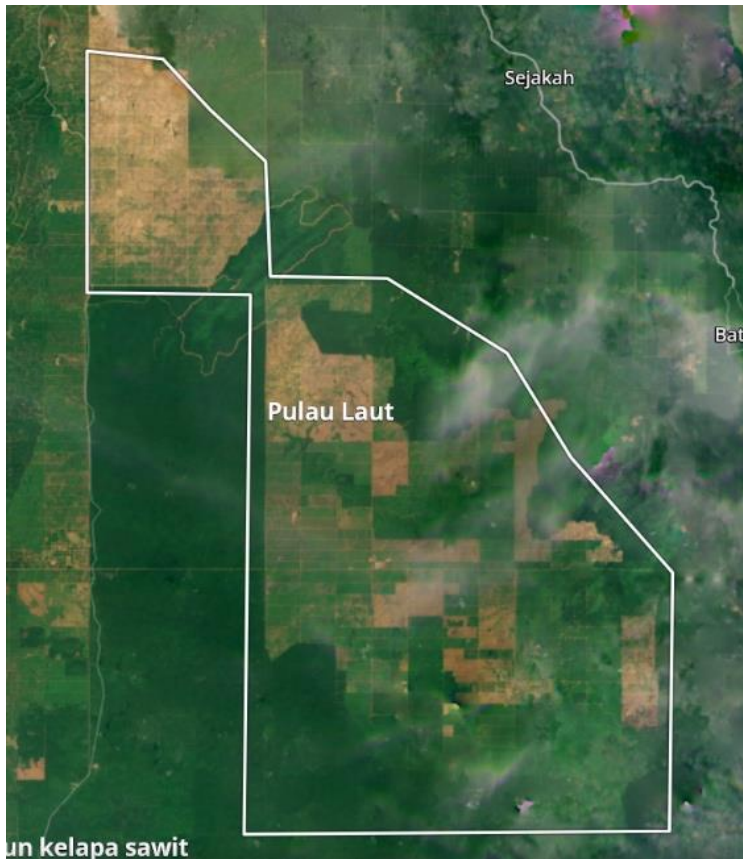
With such extensive evidence being in the public domain for several years, it's unclear why a number of companies are still sourcing from them.



# Mapping Analysis



The above map shows the focus Area of Interest (AoI) used for our deforestation analysis within the PT Tunas Hutan Mandiri concession.

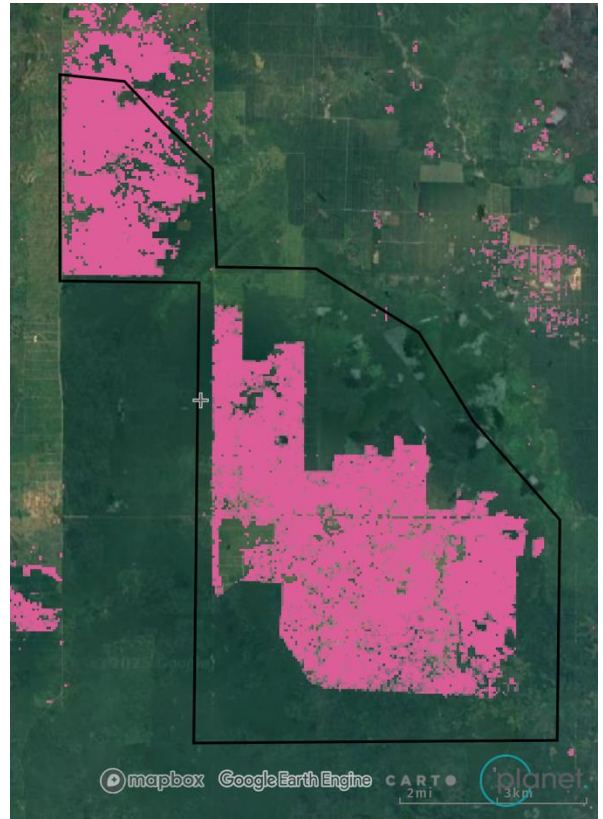


The December 2024 Planet mosaic image shows the areas developed with the AoI.

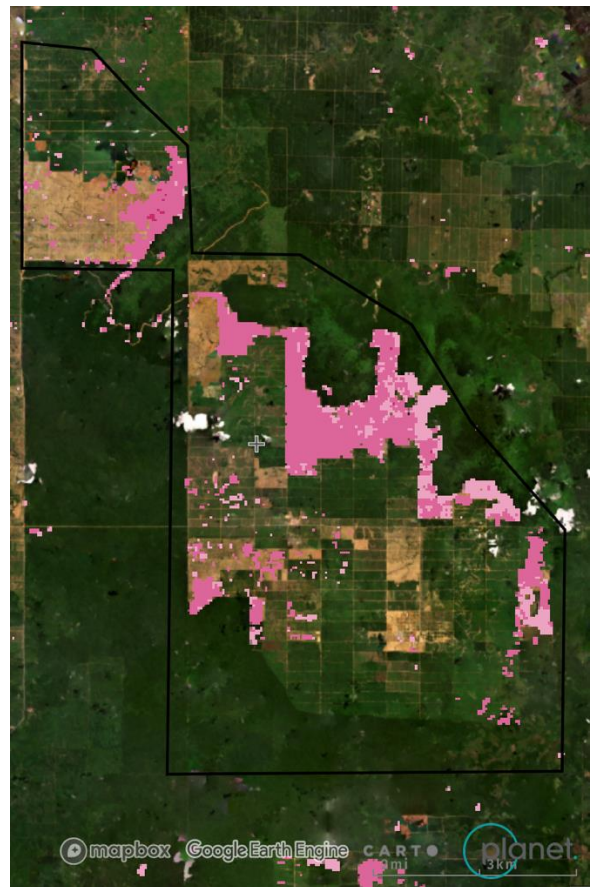


# Mapping Analysis (cont.)

Date: Jan to Dec 2023  
Tree Cover Loss (75% canopy density)  
overlaid with Google Satellite Imagery from  
last 1-3 years.



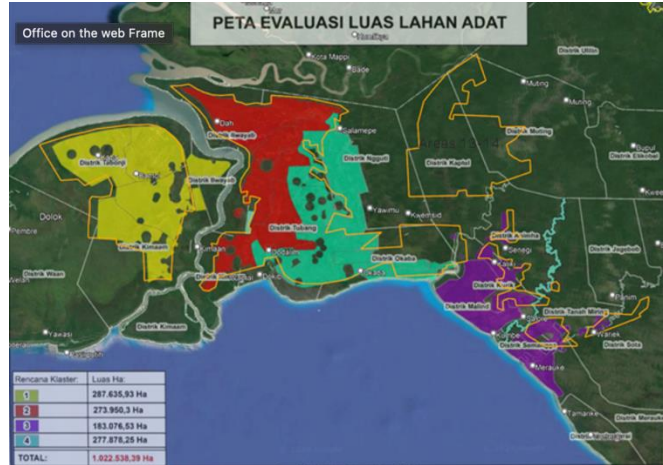
Date: January 1, 2024 to January 22, 2025  
(Integrated Deforestation Alerts overlaid over  
Planet image dated September 2024)



# Case Notes

The Jhonlin Group is now also developing the 1 million hectare mega-rice project in Merauke, Papua.

Jhonlin Group has ordered 2,000 land excavators from the SANY Group (China) at the cost of USD 250 million to establish 1 million hectares of rice paddies under the Merauke Food and Energy Project. Mighty Earth estimates that many of the target rice areas overlap with customary Indigenous land (rice areas in orange outline, Indigenous land in opaque yellow/red/blue).



Mighty Earth estimates that between July 1, 2024 and November 1, 2024, over 3,000 hectares of land including areas of forest, savanna, wetlands has been cleared to pave the way for the 1-million-hectare rice project (see imagery below) .

Date: June 17, 2024 (Planet Inc)



Date: November 1, 2024 (Planet Inc.)

