



MIGHTY EARTH



RAPID RESPONSE Palm Oil Report

Report 41
February 2023



Prepared with support from

MapHubs



Table of Contents

Cases identified using Planet and other spatial imagery

Indonesian Companies

New cases

PT Sandai Makmur Sawit : Mukti Group	3
PT Sebuku Inti Plantation: CCM Group / Hardaya Inti Plantation	6

Malaysian Companies

New cases

Linau Sinar Estate: Shin Yang Group	9
-------------------------------------	---

Unresolved cases

Kenaban Estate: Shin Yang Group	14
---------------------------------	----

Supply chain information:

Supply chain information included in Rapid Response reports is based on the latest public versions of mill disclosures, recent export data, and company grievance logs. Mighty Earth encourages companies to send updated versions of mill disclosures as soon as they become available and to share any decision to suspend relations with a given group/company listed in those mill disclosures with rapidresponse@mightyearth.org.

Mighty Earth is now including biofuel companies and other manufacturers in the supply chain tables of Rapid Response reports, as these companies have both direct and indirect trading relationships with groups highlighted in these reports and should be filing grievances on these cases. These companies are listed in the "Supply Chain Information" tables.

New Case

Group: Mukti Group

PT Sandai Makmur Sawit

Concession location: (-1.332441, 110.548330)

Deforestation and/or peat development

Report	Forest Loss (ha)	Peat development (ha)	Peat forest development (ha)	Clearance prep/Stacking lines (ha)	Time period
Report 41	~32	-	-	-	August 2022- Jan 2023

Satellite imagery (see below) shows that between August 2022 and January 2023 there was a total of ~32 ha of forest loss in the PT Sandai Makmur Sawit concession (Source: Planet Inc. 2022-2023)

Supply Chain Information

Company/Group	Trader	Biofuel / other manufacturers	Consumer Brand
PT Sandai Makmur Sawit			
Mukti Group , through PT Mustika Agung Sentosa	First Resources, IFFCO		

Background information on Ownership and the Concession

PT Sandai Makmur Sawit is majority-owned (51%) by PT Adau Agro Kalbar, which is majority-owned (96.4%) by PT Mukti Artha Tani (Mukti Group), which is majority owned (99.7%) by Mr Aswan Wiyono

Mukti Group (through PT Adau Agro Kalbar) also controls 50% shares in PT Mustika Agung Sentosa, which owns a palm oil mill.

PT Mustika Agung Sentosa owns 94.3% shares in PT Asia Mukti Lestari - see Rapid Response [report 28](#).

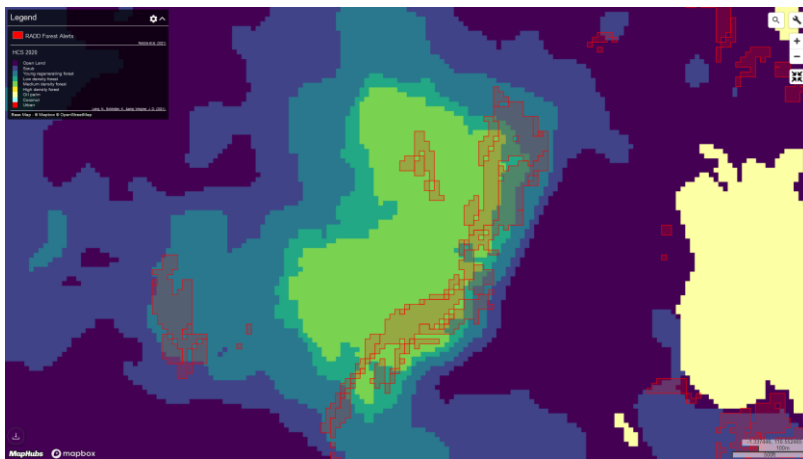
No HCV or HCS assessments for PT Sandai Makmur Sawit could be identified on the HCSA and HCVRN websites .

Mapping analysis



Alert Imagery (before and after satellite images)

The map below shows 2022/23 GLAD alerts within areas mapped as High Carbon Stock (HCS) forest, based on the indicative map published by [Lang et al. 2021](#).



High resolution image showing forest canopy cover within the area that was cleared between August 2022 and January 2023 (Source: @Bing)

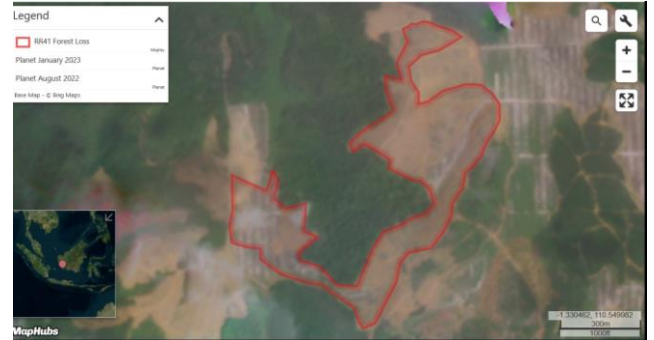


Mapping analysis (cont.)

Alert Imagery (before and after satellite images)

Clearance location: (-1.332441, 110.548330)

Date: August 2022



New Case

Group: CCM Group

PT Sebuku Inti Plantation

Concession location: (3.963980, 117.340681)

Deforestation and/or peat development

Report	Forest Loss/clearance preparation (ha)	Peat development (ha)	Peat forest development (ha)	Clearance prep/Stacking lines (ha)	Time period
Report 41	~32	-	-	-	Dec 2021- Nov 2022

Satellite imagery (see below) shows that between December 2021 and November 2022 there was a total of ~32 ha of forest loss/clearance preparation in the PT Sebuku Inti Plantation concession (Source: Planet Inc. 2021-2022)

Supply Chain Information

Company/Group	Traders	Biofuel / other manufacturers	Consumer Brands
PT Sebuku Inti Plantation	-	-	-
CCM Group/Hardaya Inti Plantations	ADM, Apical, Bunge LC, Cofco Int, Fuji Oil, IFFCO, IOI, KLK, LDC, Musim Mas, Olam, Wilmar	Neste, Oleon, Olenex	Colgate Palmolive, Danone, Hersheys, General Mills, Johnson&Johnson, Kelloggs, L'Oreal, Mondelez, Nestle, Nisshin Oillio, Pepsico, P&G, PZ Cussons, Reckitt Benckiser, Unilever, Upfield

Background information on Ownership and the Concession

PT Sebuku Inti Plantation is majority owned by PT Central Cipta Murdaya (CCM Group), which is controlled by the Murdaya family: According to the Hardaya Inti Plantations [website](#), PT Central Cipta Murdaya is also part of the CCM Group.

According to a Musim Mas [2017 grievance](#) related to CCM Group/Hardaya case, the group was 'agreeable to the stop work request and to conduct HCV and HCS assessments prior to any further land development.' However, no HCV or HCS assessment could be identified on the HCSA and HCVRN websites regarding PT Sebuku Inti Plantation.

Mapping analysis

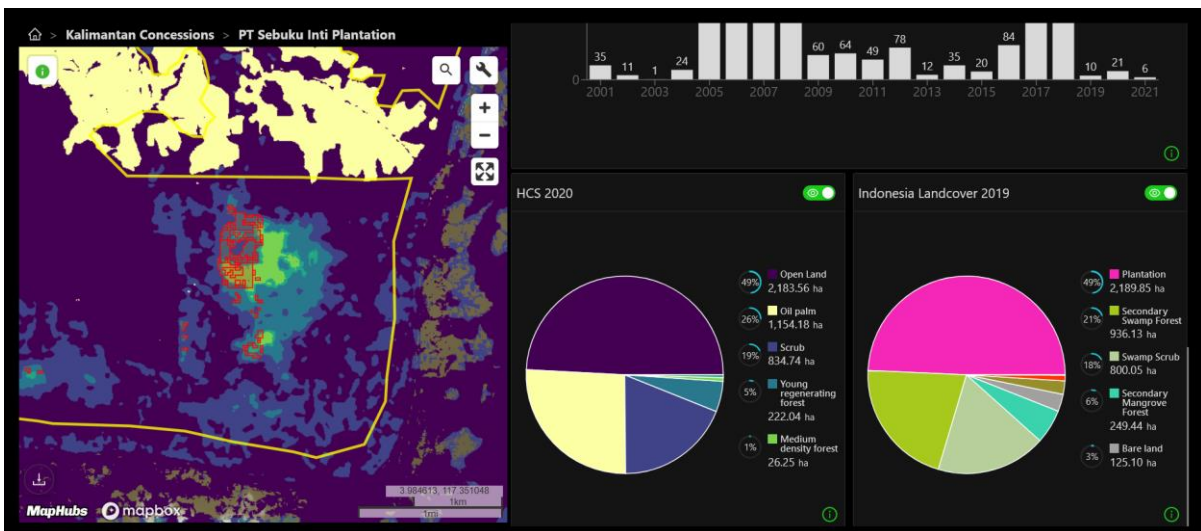


Alert Imagery (before and after satellite images)

The map below shows 2022 GLAD alerts within areas of Secondary Swamp Forest, as mapped by the Ministry of Environment and Forestry (2019).



The map below shows 2022 GLAD alerts within areas mapped as High Carbon Stock (HCS) forest, based on the indicative map published by [Lang et al. 2021](#).



Mapping analysis (cont.)

High resolution image showing forest canopy cover within the area that was cleared between December 2021 and November 2022 (Source: Mapbox)



Alert Imagery (before and after satellite images)

Clearance location: (3.963980, 117.340681)

Date: December 2021



Date: November 2022



New Case

Group: Shin Yang Group

Kenaban Estate

Concession location: (2.627635, 114.559005)

Deforestation and/or peat development

Report	Forest Loss (ha)	Peat development (ha)	Peat forest development (ha)	Clearance prep/Stacking lines (ha)	Time period
Report 41	-	--	--	~143 GLAD-HCS forest alerts -	January 2022- December 2022

GIS imagery (see below) shows that between January 2022 and December 2022 there was a total of ~143 ha of GLAD-HCS forest alerts in the Kenaban Estate concession.

Supply Chain Information

Company/Group	Traders	Biofuel / other manufacturers	Consumer Brands
Kenaban Estate	-	-	-
Shin Yang Group, through Sarawak Oil Palms (SOPB)	AAK, ADM, Bunge LC, Cargill, Cofco Int, Fuji Oil, IFFCO, KLK, LDC, Mewah, Olam, Oleon, Sime Darby	BASF, Lipidos	General Mills, Johnson&Johnson, Kelloggs, L'Oreal, Nestle, Nisshin Oillio, Pepsico, PZ Cussons, Reckitt Benckiser, Unilever, Upfield, Vandemoortele

Background information on Ownership and the Concession

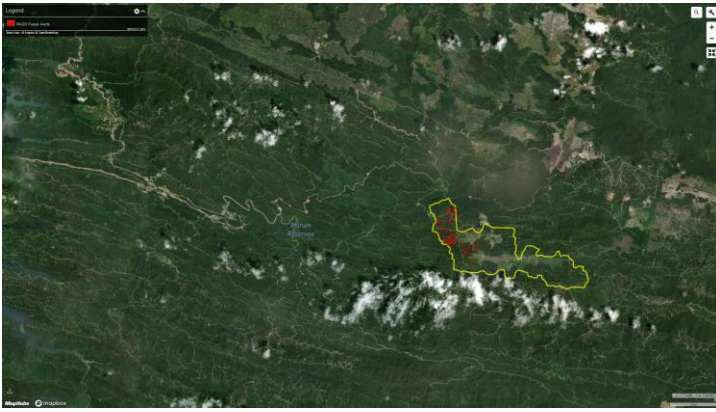
The Kenaban Estate is managed by Linau Mewah Sdn Bhd, which is 100% owned by Tan Sri Datuk Ling Chiong Ho and three other Ling family members which control the 'Shin Yang Group'.

Sarawak Oil Palms Sdn Bhd (SOPB) is part of the Shin Yang Group. SOPB's [website](#) states that the Shin Yang Group is a 'substantial shareholder' in SOPB with shareholdings of approximately 35%;# - this is because the same four Ling family members that own Linau Mewah Sdn Bhd ultimately hold 28.42% shares in SOPB, with Tan Sri Datuk Ling Chiong Ho holding an additional 6.99% shares directly in SOPB.

Shin Yang's [website](#) states that the Kenaban oil palm estate has Group-level MSPO (Malaysian Sustainable Palm Oil) certification.

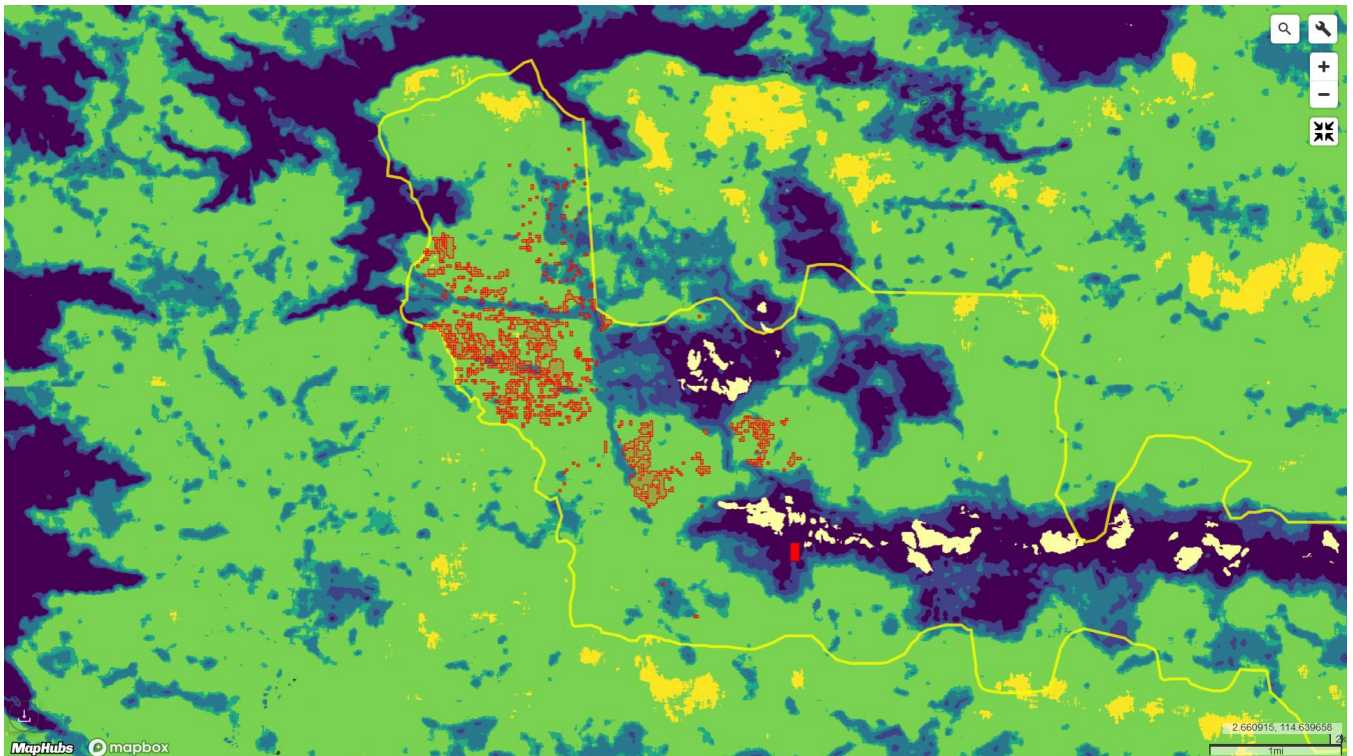
No HCV or HCS assessments for Kenaban Estate could be identified on the HCSA and HCVRN websites .

Mapping analysis



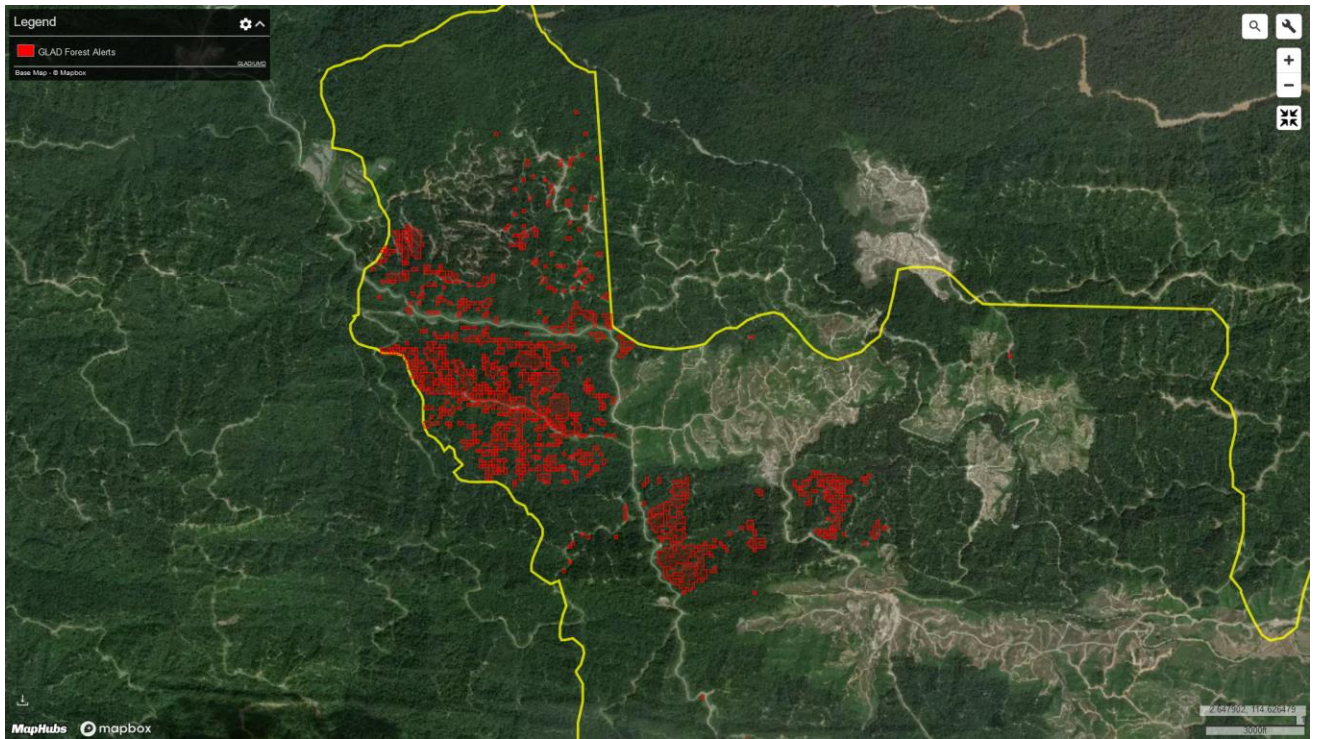
Alert Imagery (before and after satellite images)

The map below shows January 2022 - December 2022 GLAD forest alerts within areas mapped as High Carbon Stock (HCS) forest, based on the indicative map published by [Lang et al. 2021](#).



Mapping analysis (cont.)

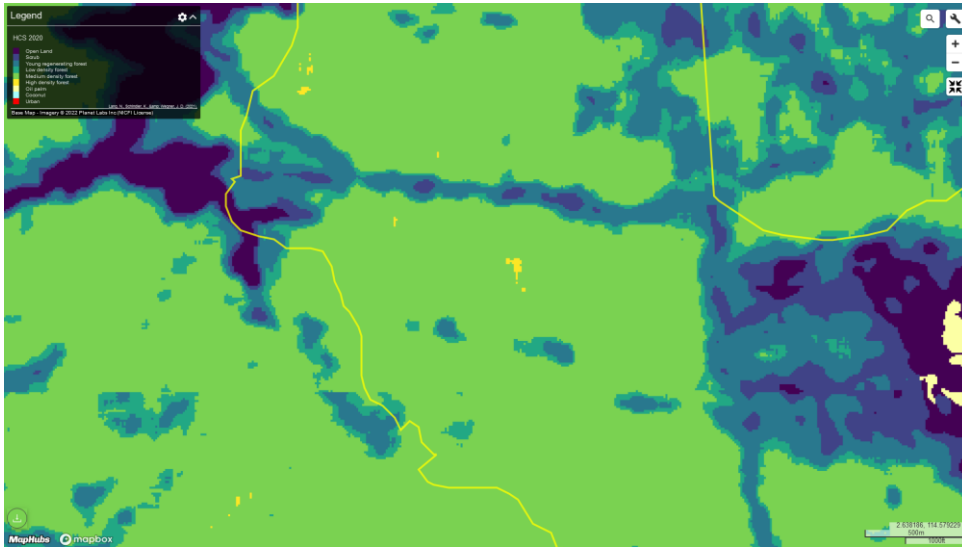
High resolution image showing forest canopy cover within the areas with Jan 2022 - Dec 22 GLAD forest alerts (Source: @Mapbox). Only the southern part of the concession is shown.



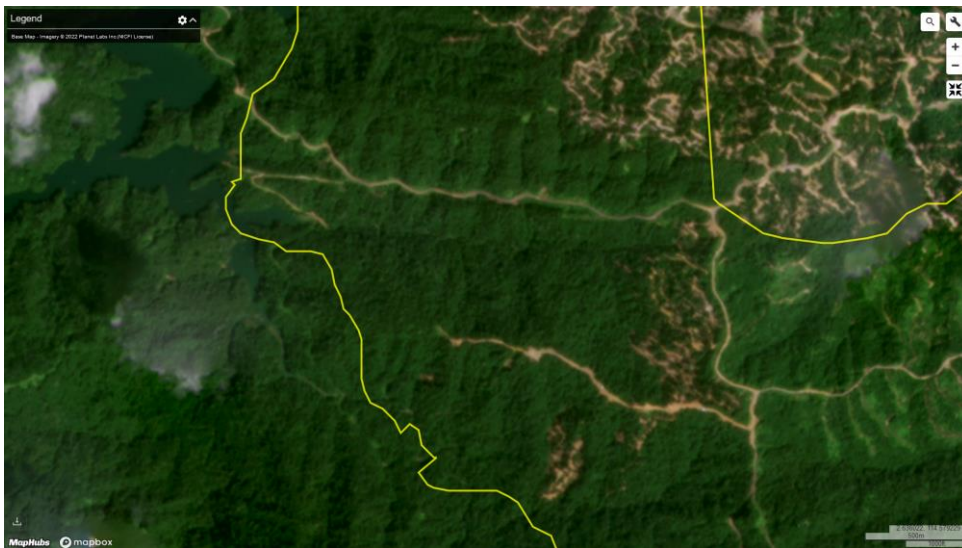
Mapping analysis (cont.)

Alert Imagery (before and after satellite images)

Example clearance location: (2.627635, 114.559005)



HCS indicative map, published by [Lang et al. 2021](#)



Date: December 2021 (@Planet)



Date: December 2022 (@Planet)

Unresolved Case

Group: Shin Yang Group

Linau Sinar Estate

Concession location: (2.604264, 114.708613)

Deforestation and/or peat development

Report	Forest Loss (ha)	Peat development (ha)	Peat forest development (ha)	Clearance prep/Stacking lines (ha)	Time period
Report 13	-	10	-	-	December 13, 2018 - January 30, 2019
Report 20	23 (via GLAD)	-	-	-	August 15, 2019 - September 15, 2019
Report 21	25.07 (via GLAD)	-	-	-	September 16, 2019 - October 15, 2019
Report 25	9	-	-	137	September 24, 2019 - February 13, 2020
Report 41	-	-	-	~88 GLAD-HCS forest alerts	January 2022 - December 2022

GIS imagery (see below) shows that between January 2022 and December 2022 there was a total of ~88 ha of GLAD-HCS forest alerts in the Linau Sinar Estate concession.

Supply Chain Information

Company/Group	Traders	Biofuel / other manufacturers	Consumer Brands
Linau Sinar Estate	-	-	-
Shin Yang Group , through Sarawak Oil Palms (SOPB)	AAK, ADM, Bunge LC, Cargill, Cofco Int, Fuji Oil, IFFCO, KLK, LDC, Mewah, Olam, Oleon, Sime Darby	BASF, Lipidos	General Mills, Johnson&Johnson, Kelloggs, L'Oreal, Nestle, Nisshin Oillio, Pepsico, PZ Cussons, Reckitt Benckiser, Unilever, Upfield, Vandemoortele

Background information on Ownership and the Concession

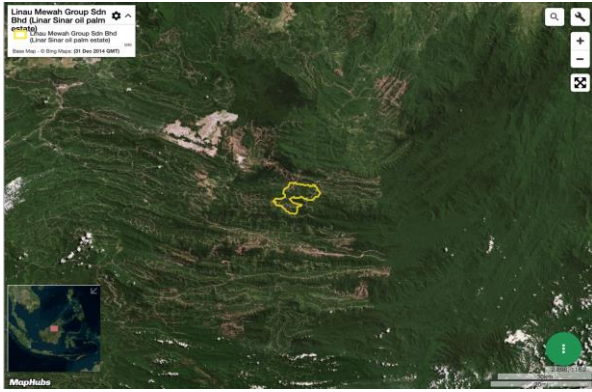
The Linau Sinar Estate is managed by Linau Mewah Sdn Bhd, which is 100% owned by Tan Sri Datuk Ling Chiong Ho and three other Ling family members which control the 'Shin Yang Group'.

Sarawak Oil Palms Sdn Bhd (SOPB) is part of the Shin Yang Group. SOPB's [website](#) states that the Shin Yang Group is a 'substantial shareholder' in SOPB with shareholdings of approximately 35%;# - this is because the same four Ling family members that own Linau Mewah Sdn Bhd ultimately hold 28.42% shares in SOPB, with Tan Sri Datuk Ling Chiong Ho holding an additional 6.99% shares directly in SOPB.

Shin Yang's [website](#) states that the Linau Sinar oil palm estate has Group-level MSPO (Malaysian Sustainable Palm Oil) certification.

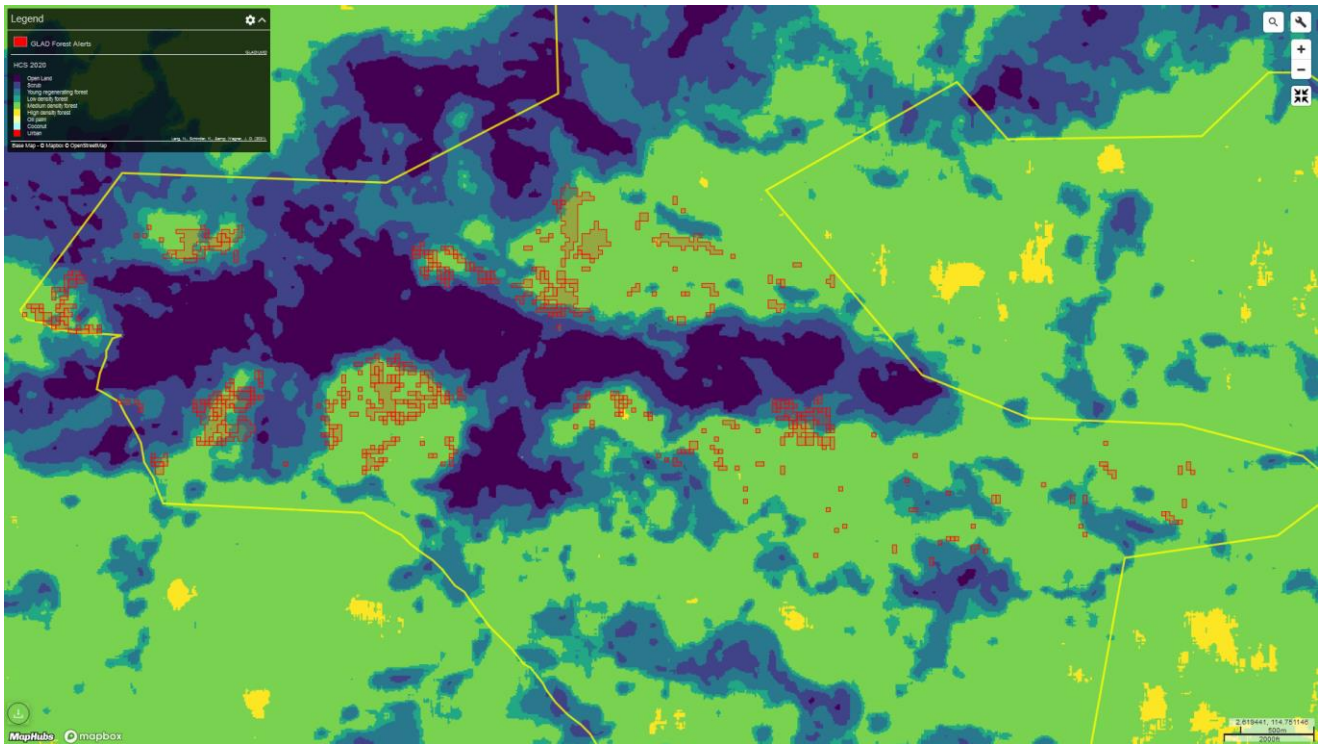
No HCV or HCS assessments for Linau Sinar Estate could be identified on the HCSA and HCVRN websites .

Mapping analysis



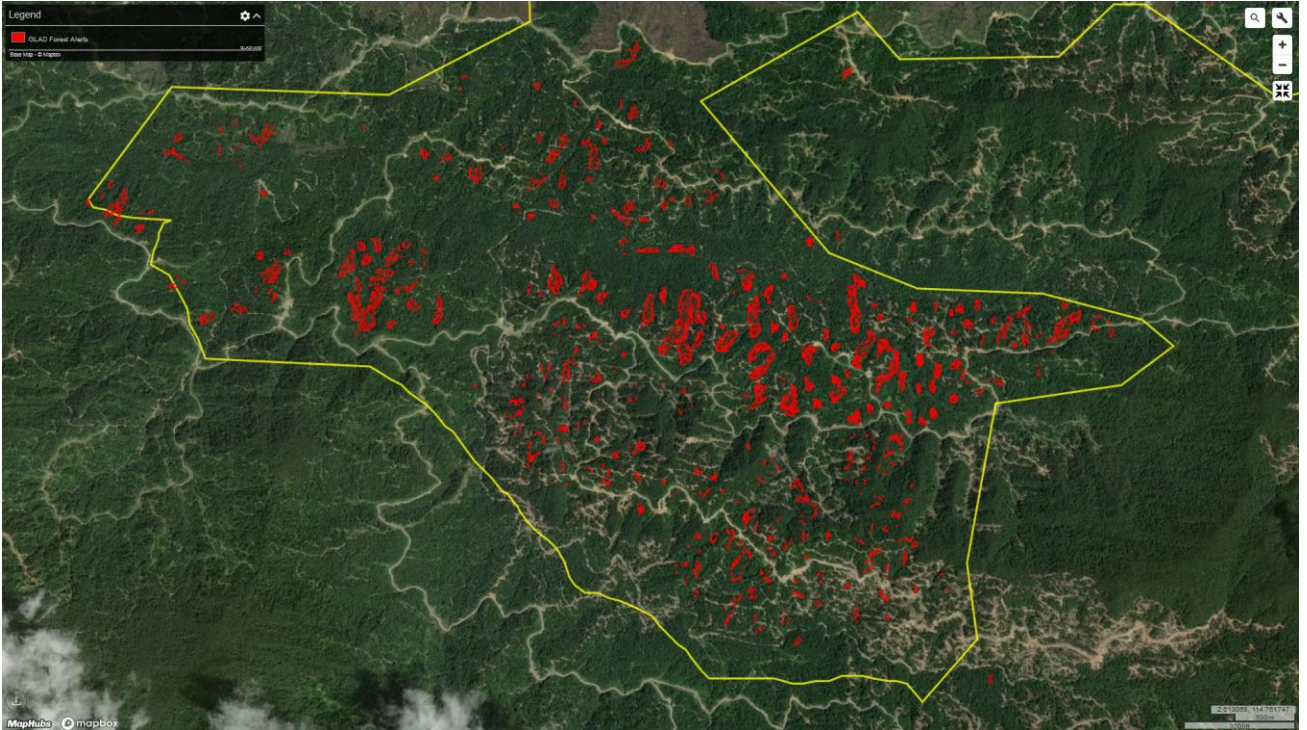
Alert Imagery (before and after satellite images)

The map below shows January 2022 - December 2022 GLAD forest alerts within areas mapped as High Carbon Stock (HCS) forest, based on the indicative map published by [Lang et al. 2021](#). Only the southern part of the concession is shown.



Mapping analysis (cont.)

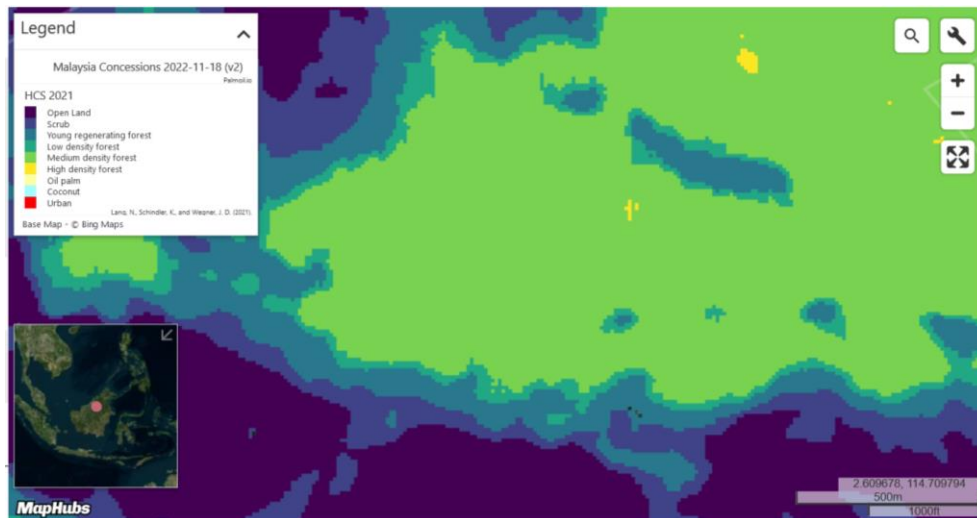
High resolution image showing forest canopy cover within the areas with Jan 2022 - Dec 22 GLAD forest alerts (Source: @Mapbox). Only the southern part of the concession is shown.



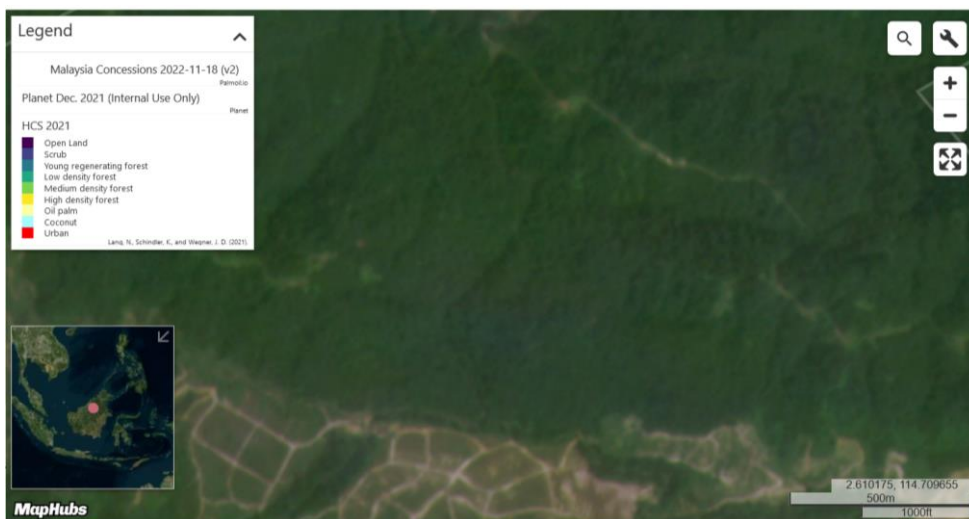
Mapping analysis (cont.)

Alert Imagery (before and after satellite images)

Example clearance location: (2.604264, 114.708613)



HCS indicative map, published by [Lang et al. 2021](#)



Date: December 2021 (@Planet)



Date: December 2022 (@Planet)