



MIGHTY EARTH



RAPID RESPONSE

Palm Oil Report

Report 27

May 2020



Prepared with

MapHubs

Waxman

Table of Contents

Cases identified using Sentinel imagery

Indonesian Companies

New Case

Fangiono family companies: PT Agrindo Green Lestari 5

Unresolved Cases

QL Resources Bhd: PT Pipit Mutiara Indah 9

Wings Agro Group: PT Indopenta Sejahtera Abadi 13

Samling: PT Tunas Borneo Plantations 16

Malaysian Companies

Unresolved Case

Samling: LPF/0007 Samling Jelalong (OP) 22

Additional cases identified using filtered GLAD alerts

New Cases – No Known Supply Chain Links

PT Buana Pratama Cipta (formerly Provident Agro): PT Banyan Tumbuh Lestari 27

Unknown Group: PT Tualang Raya 27

Repeat Cases – Known Supply Chain Links

Sepanjang Group: PT Permata Sawit Mandiri 28

Widya Corporation: PT Mulia Inti Perkasa 28

Indonusa Group: PT Internusa Jaya Sejahtera 28

NPC Resources Bhd: PT Sumber Alam Selaras 28

Mulia Sawit Group: PT Persada Era Agro Kencana 28

Dharma Satya Nusantara: PT Putra Utama Lestari 28

Capitol Group: PT Medcopapua Hijau Selaras 28

Dhanistha Surya Nusantara: PT Sabhantara Rawi Sentosa 28

Pinehill Pacific: PT Makmur Jaya Malindo 28

Global Enterprise Sdn Bhd: PT Bulungan Surya Mas Pratama 2 28

Bumitama Group: PT Damai Agro Sejahtera 28

Dharma Satya Nusantara: PT Putra Utama Lestari 29

Hayel Saeed Anam Group: PT Megakarya Jaya Raya 29

Samuel International Group: PT Bina Sarana Sawit Utama 29

Genting Plantations Bhd: PT Citra Sawit Cemerlang 29

Fangiono family companies: PT Tirta Madu Sawit Jaya 29

Table of Contents

Additional cases identified using filtered GLAD alerts (continued)

Repeat Cases – Known Supply Chain Links (continued)

Mulia Sawit Group: PT Persada Era Agro Kencana	29
Global Enterprise Sdn Bhd: PT Bulungan Surya Mas Pratama	29
Asian Agri (RGE): PT Usaha Sawit Unggul	29
Makin Group: PT Mekar Karya Kahuripan	29
CB Industrial Product Holding: PT Jaya Jadi Utama	29
Anglo-Eastern Plantations: PT Kahayan Agro Plantation	29
Shin Yang Group: LPF/0018 Shin Yang OP Planting Area	29
KTS Holdings Sdn Bhd: BLD Plantation Bhd	29
Puncak Niaga Holdings Bhd: Danum Sinar Sdn Bhd	30
Shin Yang Group / Sarawak Oil Palms Bhd: Dataran Linau Sdn Bhd (Lot 1 Block 14 Murum LD)	30
BBC Holdings Sdn Bhd: Almabumi Plantation Sdn Bhd	30
Rimbunan Hijau Group: Woodijaya Sdn Bhd (Lot 197)	30
Samling Group: LPF/0006 Samling Lana	30
Shin Yang Group: Linau Sinar Sdn Bhd (Metalon OP Estate, Lot 2, Danum LD)	30
Woodman Group: Baram Estate, part of LPF/0004	30
Rimbunan Hijau Group: Timrest Sdn Bhd	30
TH Plantations Bhd: Hydroflow Sdn Bhd	30
Woodman Group: Adong estate, part of LPF 0004	30
Rimbunan Hijau Group: Poh Zhen Sdn Bhd	30

Repeat Cases – No Known Supply Chain Links

Korompis family: PT Berau Karetindo Lestari	31
Green Yield Pte Ltd: PT Tri Investama	31
Unknown Group: PT Prasetya Mitra Muda (Block II)	31
Unknown Group: PT Marita Makmur Jaya	31
Unknown Group: PT Gapura Alas Lestari	31
JSK International Co Ltd (Korea): PT Future Agropia Indonesia	31
Unknown Group: PT Citrapermata Serundung	31
IMC Plantations: PT Perkebunan Inti Sendawar	31

Supply chain information:

Supply chain information included in Rapid Response reports is based on the latest public versions of mill disclosures, recent export data and grievance logs. Mighty Earth encourages companies to send updated versions of mill disclosures as soon as they become available and to share any decision to suspend relations with a given group/company listed in those mill disclosures; please send to rapidresponse@mightyearth.org.

Mighty Earth is now including biofuel companies in the supply chain tables of Rapid Response reports, as these companies have both direct and indirect trading relationships with groups highlighted in these reports and should be filing grievances on these cases. These biofuel companies are listed in the “Traders and Biofuel Companies” tables.

Table of Contents

Additional cases identified using filtered GLAD alerts (continued)

Repeat Cases – No Known Supply Chain Links (continued)

Unknown Group: PT Cipta Karya Sesayap	31
Unknown Group: PT Sumber Sawit Mitrajaya	31
Unknown Group: PT Pipit Citra Persada	31
Shanghai Xinjiu Chemical Co Ltd: PT Sebaung Sawit Plantation	31
Unknown Group: PT Barito Riau Jaya	31
Unknown Group: PT Triomas Forestry Development Indonesia	31
Henan Jiujiu Chemical Co. Ltd: PT Palembang Segar Lestari	32
Unknown Group: PT Mentobi Mitra Lestari	32
Starmas Sentosa Mandiri: PT Agrindo Sukses Sejahtera	32
Unknown Group: Telliana Enterprise Sdn Bhd	32
Unknown Group: Formerly Ekran Bhd	32
Unknown Group: Titanium Management Sdn Bhd (Part 1)	32
Unknown Group: Titanium Management Sdn Bhd (Part 2)	32
Lee Ling Timber Sdn Bhd: Limba Jaya Timber Sdn Bhd (Limbang)	32
Lee Ling Timber Sdn Bhd: LPF/0038 Limba Jaya Timber Sdn Bhd (Part 2)	32

Supply chain information:

Supply chain information included in Rapid Response reports is based on the latest public versions of mill disclosures, recent export data and grievance logs. Mighty Earth encourages companies to send updated versions of mill disclosures as soon as they become available and to share any decision to suspend relations with a given group/company listed in those mill disclosures; please send to rapidresponse@mightyearth.org.

Mighty Earth is now including biofuel companies in the supply chain tables of Rapid Response reports, as these companies have both direct and indirect trading relationships with groups highlighted in these reports and should be filing grievances on these cases. These biofuel companies are listed in the “Traders and Biofuel Companies” tables.

New Case

Group: Fangiono family companies

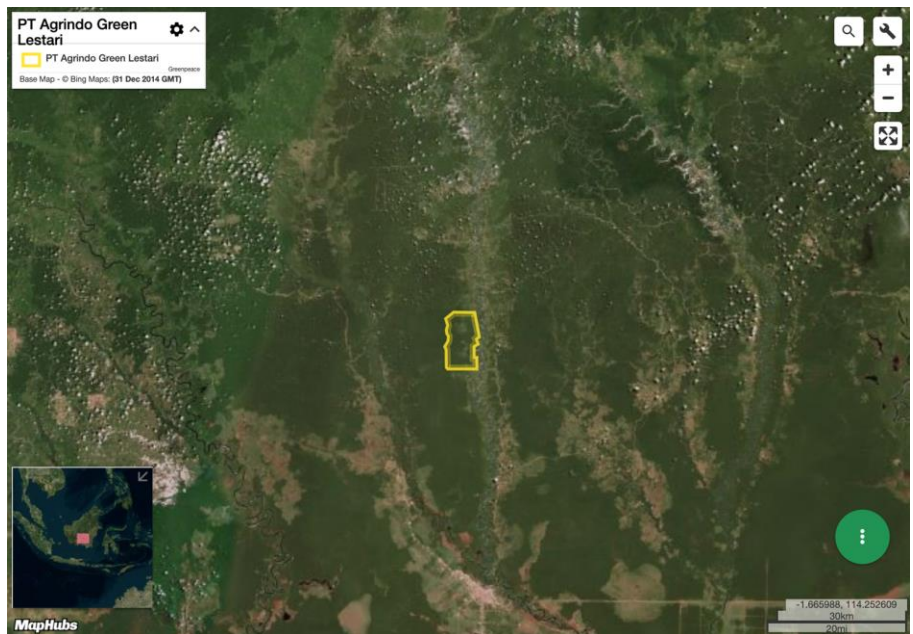
PT Agrindo Green Lestari

Concession location: (-1.691, 113.874)

Deforestation and/or peat development

Report	Deforestation (ha)	Peat development (ha)	Peat forest development (ha)	Clearance prep/Stacking lines (ha)	Time period
Report 27	149	-	-		September 11, 2019- February 23, 2020

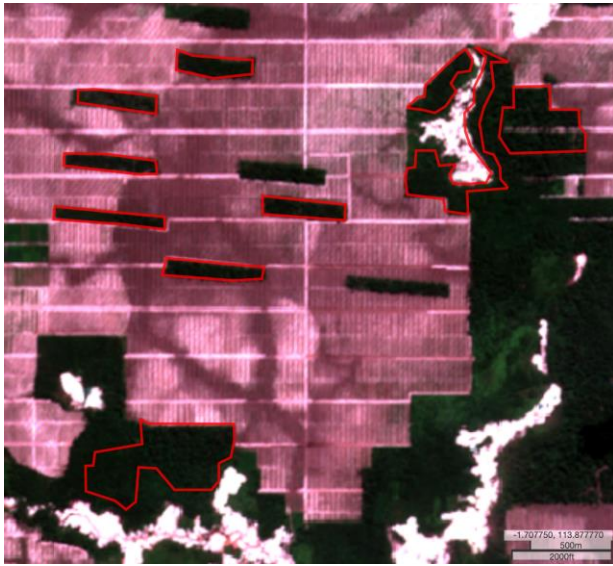
Satellite imagery (see below) shows that between September 11, 2019 and February 23, 2020 a total of 149 hectares of forest were cleared in the PT Agrindo Green Lestari concession. (Imagery: Contains modified Copernicus Sentinel data 2020)



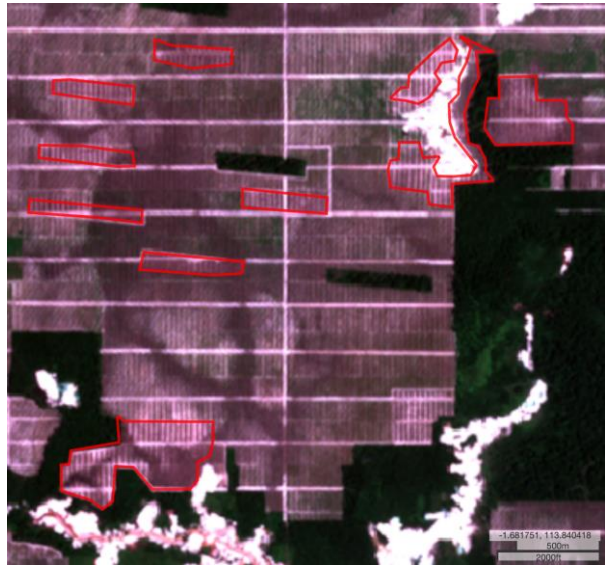
Alert Imagery (before and after satellite images)

Clearance location: (-1.715, 113.889)

Date: September 11, 2019

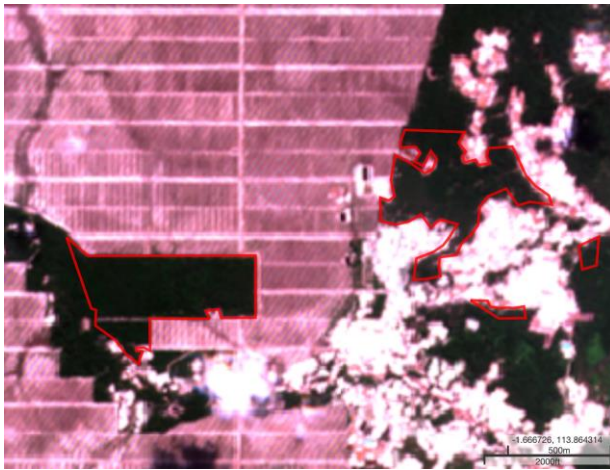


Date: February 23, 2020

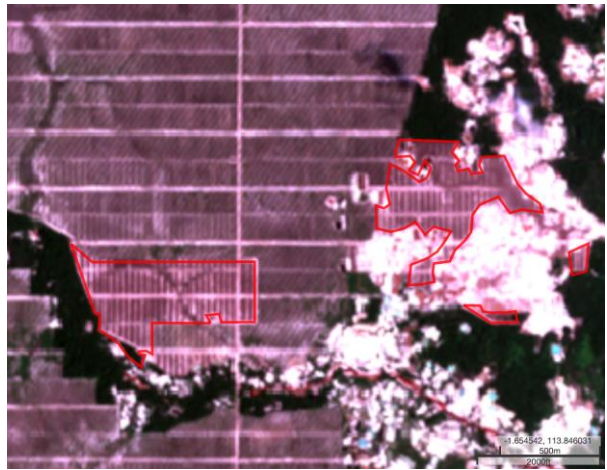


Clearance location: (-1.659, 113.867)

Date: September 11, 2019



Date: February 23, 2020



Ownership Information

PT Agrindo Green Lestari is part of the Ciliandry Anky Abadi Group (CAA),¹ owned by the Fangiono family. The Fangiono family also owns Fangiono Agro Plantation (FAP).

1. Notary deeds

Supply Chain Information

Supply Chain Links: Traders and Biofuel Companies	AAK	Itochu	KLK	Musim Mas
PT Agrindo Green Lestari				
Ciliandry Anky Abadi/Fangiono Agro Plantation	x	x	x	x

Supply Chain Links: Traders and Biofuel Companies	Neste	Olam	Sime Darby	Wilmar
PT Agrindo Green Lestari				
Ciliandry Anky Abadi/Fangiono Agro Plantation	x	x	x	X

Supply Chain Links: Consumer Brands	Avon	Colgate- Palmolive	Danone	FrieslandCampina
PT Agrindo Green Lestari				
Ciliandry Anky Abadi/Fangiono Agro Plantation	x	x	x	x

Supply Chain Links: Consumer Brands	General Mills	Hershey	Johnson & Johnson	Kellogg's
PT Agrindo Green Lestari				
Ciliandry Anky Abadi/Fangiono Agro Plantation	x	x	x	x

Supply Chain Information (continued)

Supply Chain Links: Consumer Brands	Mondelez	Nestle	P&G	PepsiCo
PT Agrindo Green Lestari				
Ciliandry Anky Abadi/Fangiono Agro Plantation	x	x	x	x

Supply Chain Links: Consumer Brands	Reckitt Benckiser	Unilever	Vandemoortele
PT Agrindo Green Lestari			
Ciliandry Anky Abadi/Fangiono Agro Plantation	x	x	x

Unresolved Case

Group: QL Resources Bhd

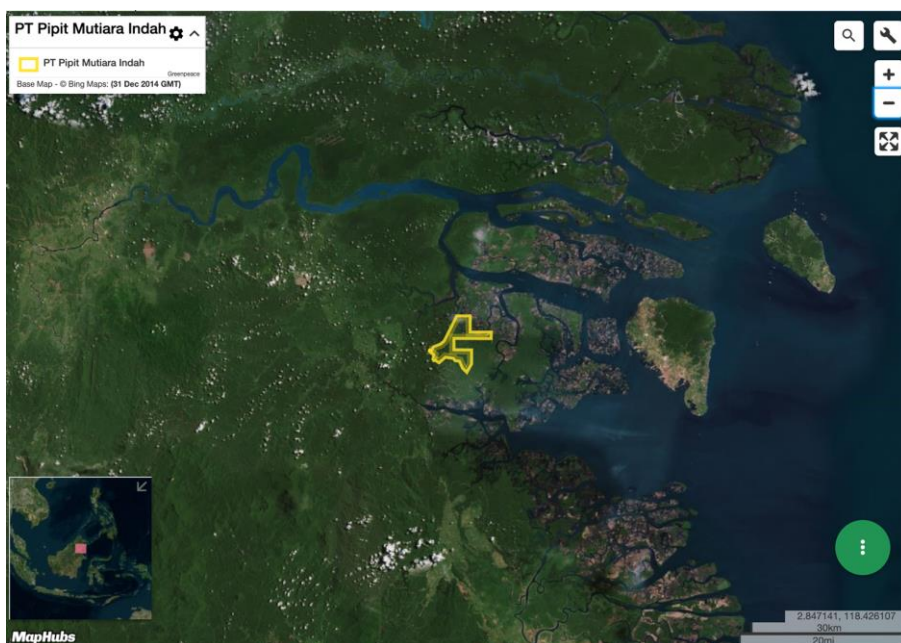
PT Pipit Mutiara Indah

Concession location: (3.349, 117.220)

Deforestation and/or peat development

Report	Deforestation (ha)	Peat development (ha)	Peat forest development (ha)	Clearance prep/Stacking lines (ha)	Time period
Report 21	50	-	-	-	January 3-October 20, 2019
Report 27	25	-	-	-	December 22, 2019-March 16, 2020

Satellite imagery (see below) shows that between December 22, 2019 and March 16, 2020 a total of 25 hectares of forest were cleared in the PT Pipit Mutiara Indah concession. (Imagery: Contains modified Copernicus Sentinel data 2020)



Alert Imagery (before and after satellite images)

Clearance location: (3.388, 117.236)

Date: December 22, 2019



Date: March 16, 2020



Ownership Information

PT Pipit Mutiara Indah is part of QL Resources Bhd.²

2. QL Resources Bhd Annual Report 2019: <http://ql.listedcompany.com/misc/ar2019.pdf>.

Supply Chain Information

Supply Chain Links: Traders and Biofuel Companies	AAK	ADM	Cargill	ISF	Itochu	Louis Dreyfus
PT Pipit Mutiara Indah	x	x				x
QL Resources Bhd	x	x	x	x	x	x

Supply Chain Links: Consumer Brands	Avon	Colgate-Palmolive	Danone	FrieslandCampina
PT Pipit Mutiara Indah	x	x	x	
QL Resources Bhd	x	x	x	x

Supply Chain Links: Consumer Brands	General Mills	Hershey	Kellogg's
PT Pipit Mutiara Indah	x	x	x
QL Resources Bhd	x	x	x

Supply Chain Links: Consumer Brands	Mars	Mondelez	Nestle	Nisshin Oillio
PT Pipit Mutiara Indah	x	x	x	x
QL Resources Bhd	x	x	x	x

Supply Chain Information (continued)

Supply Chain Links: Consumer Brands	P&G	PepsiCo	PZ Cussons	Reckitt Benckiser
PT Pipit Mutiara Indah	x	x	x	x
QL Resources Bhd	x	x	x	x

Supply Chain Links: Consumer Brands	Unilever	Upfield
PT Pipit Mutiara Indah	x	
QL Resources Bhd	x	x

Unresolved Case

Group: Wings Agro Group

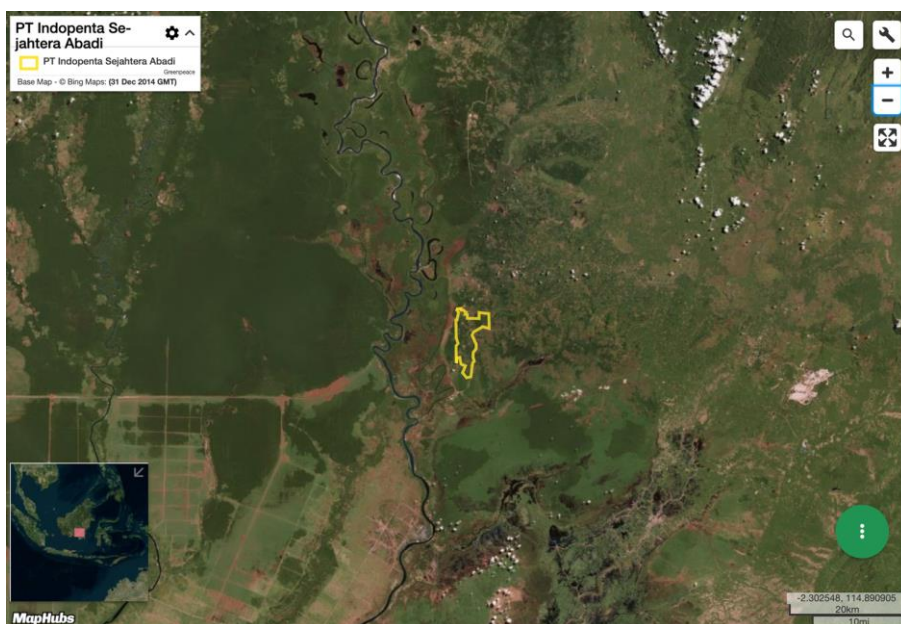
PT Indopenta Sejahtera Abadi

Concession location: (-2.110, 114.952)

Deforestation and/or peat development

Report	Deforestation (ha)	Peat development (ha)	Peat forest development (ha)	Clearance prep/Stacking lines (ha)	Time period
Report 19	54	-	-	-	May 12-August 21, 2019
Report 20	43 (GLAD alerts)	-	-	-	August 15-September 15, 2019
Report 21	12 (GLAD alerts)	-	-	-	September 16-October 15, 2019
Report 27	11	-	-	-	October 11, 2019-March 18, 2020

Satellite imagery (see below) shows that between October 11, 2019 and March 18, 2020 a total of 11 hectares of forest were cleared in the PT Indopenta Sejahtera Abadi concession. (Imagery: Contains modified Copernicus Sentinel data 2020)



Alert Imagery (before and after satellite images)

Clearance location: (-2.110, 114.952)

Date: October 11, 2019



Date: March 18, 2020



Ownership Information

PT Indopenta Sejahtera Abadi is part of the Wings Agro Group.³

³. Wings Agro website: www.wingsagro.com/eng/ourbusiness.

Supply Chain Information

Supply Chain Links: Traders and Biofuel Companies	AAK	Cargill	Fuji Oil	Neste
PT Indopenta Sejahtera Abadi				
Wings Agro Group	x	x	x	x

Supply Chain Links: Consumer Brands	General Mills	Hershey	Kellogg's	Nestle
PT Indopenta Sejahtera Abadi				
Wings Agro Group	x	x	x	x

Supply Chain Links: Consumer Brands	P&G	PepsiCo	PZ Cussons	Unilever
PT Indopenta Sejahtera Abadi				
Wings Agro Group	x	x	x	x

Unresolved Case

Group: Samling

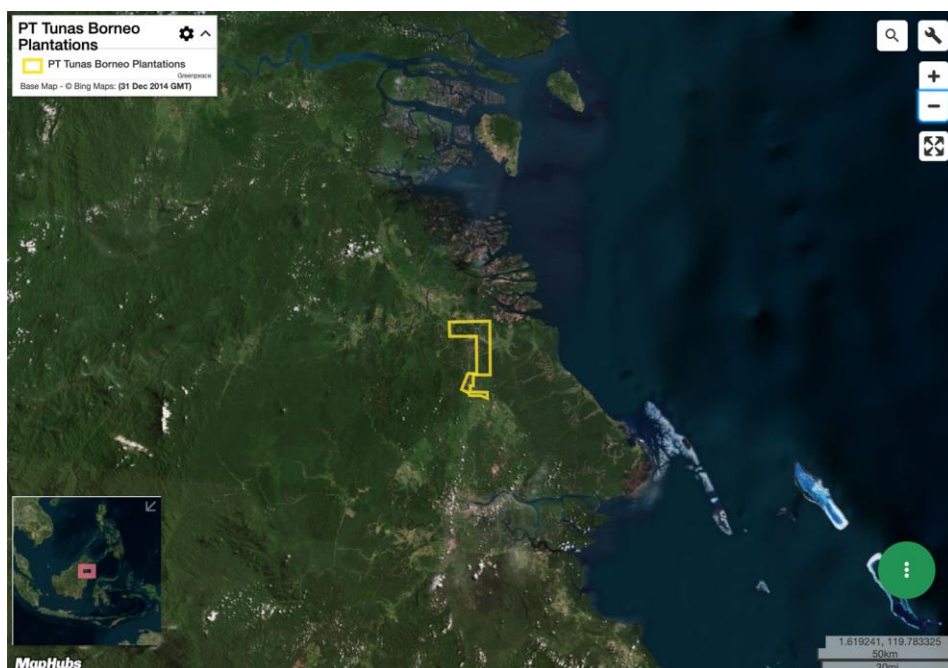
PT Tunas Borneo Plantations

Concession location: (2.591, 117.522)

Deforestation and/or peat development

Report	Deforestation (ha)	Peat development (ha)	Peat forest development (ha)	Clearance prep/Stacking lines (ha)	Time period
Report 18	13	-	-	-	May 3-August 3, 2019
Report 27	85	-	-	-	February 22-April 27, 2020

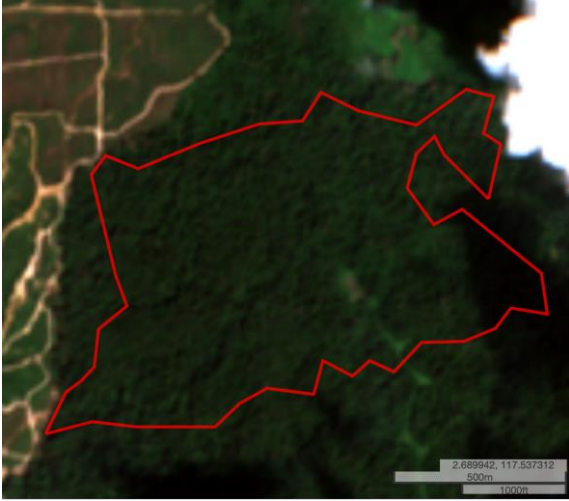
Satellite imagery (see below) shows that between February 22, 2020 and April 27, 2020 a total of 85 hectares of forest were cleared in the PT Tunas Borneo Plantations concession. (Imagery: Contains modified Copernicus Sentinel data 2020)



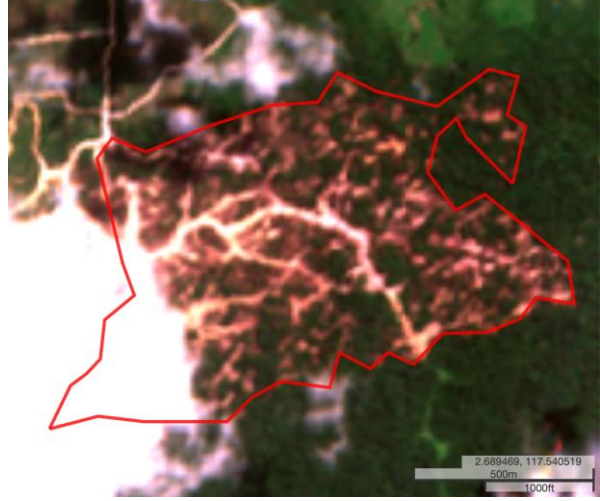
Alert Imagery (before and after satellite images)

Clearance location: (2.688, 117.552)

Date: February 22, 2020



Date: April 27, 2020



Ownership Information

PT Tunas Borneo Plantations is part of the Samling Group.⁴

4. www.samling.com/contact.php

Case Notes

Since February 2020, ADM, Cargill, Fuji Oil, IOI, KLK, LDC, Sime Darby and Wilmar – as well as Hershey’s, Mars, P&G, and Upfield – have all informed Mighty Earth that they have suspended Samling from their supply chains.

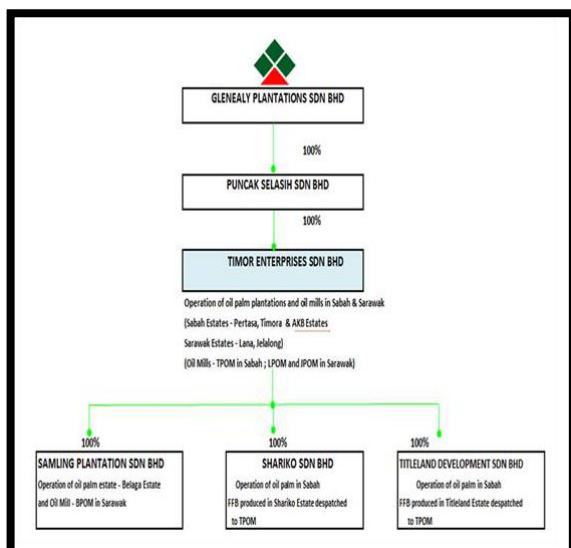
Sime Darby informed Mighty Earth that: *“We would like to confirm that we have notified Samling that we will no longer be sourcing from them due to concerns raised by our key customers. Central to these concerns is the adoption of NDPE commitments across the whole Samling Group, and not just for Glenealy Plantations.”*

On 15 April 2020, Samling responded to these suspensions – not by halting all Samling group-wide deforestation, but by offering up the smallest fig leaf: Glenealy Plantations Sdn Bhd announced an NDPE policy and a memo issuing a *“group-wide moratorium on any land clearing for all greenfield development on mineral soil and peatland regardless of depth with immediate effect until further notice.”*

Several traders and biodiesel companies – AAK, BLD, Neste, Olam, Sarawak Oil Palms Bhd (SOPB) – and consumer brands, including Mondelez, Nestle, and PepsiCo, have yet to take action to suspend Samling from their supply chains.

Glenealy has also been circulating information to traders claiming that ‘Glenealy holds all the oil palm estates and mills’ and that the company owns 100% of the shares in Timor Enterprise Sdn Bhd (through Puncak Selasih Sdn Bhd) which owns the Jelalong, Lana and Belaja palm oil operations, Samling Plantations Sdn Bhd and other entities (see left graphic below).

Based on this information, it would be assumed that the moratorium applies to all Glenealy-owned plantation areas. However, according to shareholder ownership data obtained from the Companies Commission of Malaysia, Glenealy Plantations only owns 15.31% of Timor Enterprise Sdn Bhd. The majority shareholder (84.68%) in Timor Enterprise Sdn Bhd is Lingui Developments Sdn Bhd, which is 100% owned by Samling Malaysia Incorporated, registered in the British Virgin Islands (see right graphic below).



4 / 6

SSM
 SURUHJAJAYA SYARIAH MALAYSIA
 COMPANIES COMMISSION OF MALAYSIA
 (Agensi di bawah KPDNHEP)

SHAREHOLDERS / MEMBERS

IC/Passport/ Registration No.	Name	Total of Share
196701000630 (7574-D)	LINGUI DEVELOPMENTS SDN BHD	141,567
199801012243 (468371-D)	PUNCAK SELASIH SDN. BHD.	25,600

Supply Chain Information

Supply Chain Links: Traders and Biofuel Companies	AAK	BLD Plantation Bhd	Itochu	Lipsa
PT Tunas Borneo Plantations				
Samling	x	x	x	x

Supply Chain Links: Traders and Biofuel Companies	Neste	Olam	Sarawak Oil Palms
PT Tunas Borneo Plantations			
Samling	x	x	x

Supply Chain Links: Consumer Brands	Avon	Colgate- Palmolive	Danone	FrieslandCampina
PT Tunas Borneo Plantations				
Samling	x	x	x	x

Supply Chain Links: Consumer Brands	General Mills	Johnson & Johnson	Kellogg's	Mondelez
PT Tunas Borneo Plantations				
Samling	x	x	x	x

Supply Chain Information (continued)

Supply Chain Links: Consumer Brands	Nestle	Nisshin Oillio	PepsiCo	PZ Cussons
PT Tunas Borneo Plantations				
Samling	x	x	x	x

Supply Chain Links: Consumer Brands	Reckitt Benckiser	Vandemoortele
PT Tunas Borneo Plantations		
Samling	x	x

Supply Chain Information (continued)

Although SOPB published an NDPE policy in January 2019, the company has not published a mill list disclosing its suppliers and sources of palm oil. While SOPB has listed several of Mighty Earth's Rapid Response cases on Samling in its grievance list, the company has failed to address these grievances or suspend Samling.

Several traders, biofuel companies and consumers brands are sourcing palm oil originating from SOPB (see tables below). These companies should file grievances with SOPB, requesting that it acts on the Samling case and suspends them.

Supply Chain Links: Traders and Biofuel Companies	AAK	Cargill	KLK	Lipsa
Sarawak Oil Palms	x	x	x	x

Supply Chain Links: Traders and Biofuel Companies	Louis Dreyfus	Mewah	Neste	Sime Darby
Sarawak Oil Palms	x	x	x	x

Supply Chain Links: Consumer Brands	Avon	Colgate- Palmolive	Friesland Campina	Hershey	Johnson & Johnson
Sarawak Oil Palms	x	x	x	x	x

Supply Chain Links: Consumer Brands	Kellogg's	Mars	P&G	PepsiCo
Sarawak Oil Palms	x	x	x	x

Supply Chain Links: Consumer Brands	PZ Cussons	Reckitt Benckiser	Unilever	Upfield	Vandemoortele
Sarawak Oil Palms	x	x	x	x	x

Unresolved Case

Group: Samling

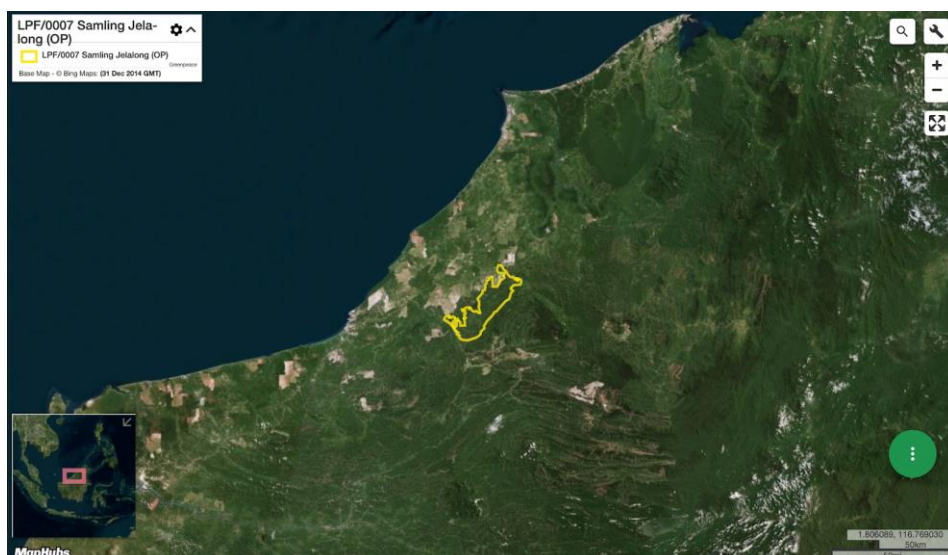
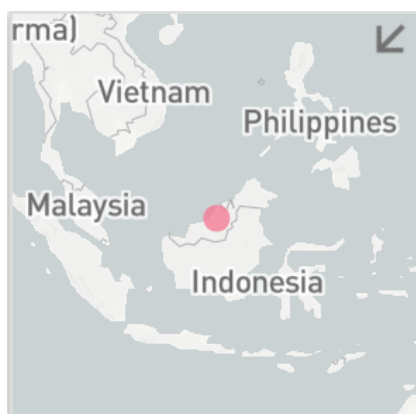
LPF/0007 Samling Jelalong (OP)

Concession location: (3.313, 113.885)

Deforestation and/or peat development

Report	Deforestation (ha)	Peat development (ha)	Peat forest development (ha)	Clearance prep/Stacking lines (ha)	Time period
Report 18	33 (via GLAD)	-	-	-	June 15-July 15, 2019
Report 19	95 (via GLAD)	-	-	-	July 15-August 15, 2019
Report 20	96 (via GLAD)	-	-	-	August 15-September 15, 2019
Report 21	38 (via GLAD)	-	-	-	September 16-October 15, 2019
Report 23	131 (via GLAD)	-	-	-	November 15-December 6, 2019
Report 24	0.15 (via GLAD)	-	-	-	December 15, 2019-January 15, 2020
Report 25	68 (via GLAD)	-	-	-	January 15-February 17, 2020
Report 26	72 (via GLAD)	-	-	-	February 17-March 16, 2020
Report 27	91	-	-	-	May 24, 2019-April 17, 2020

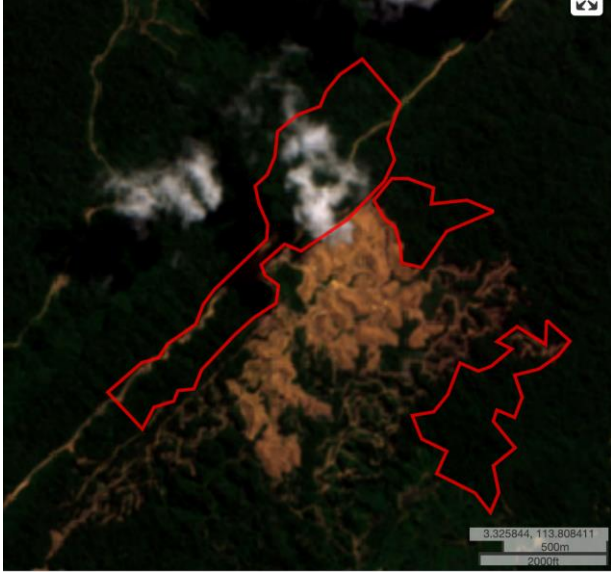
Satellite imagery (see below) shows that between May 24, 2019 and April 27, 2020 a total of 91 hectares of forest were cleared in the LPF/0007 Samling Jelalong (OP) concession. (Imagery: Contains modified Copernicus Sentinel data 2020)



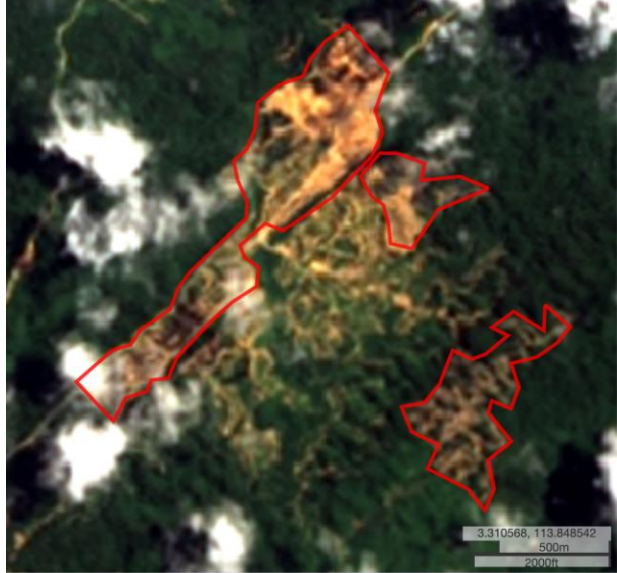
Alert Imagery (before and after satellite images)

Clearance location: (3.317, 113.844)

Date: May 24, 2019



Date: April 17, 2020



Ownership Information

LPF/0007 Samling Jelalong (OP) is part of the Samling Group.⁵

Case Notes

See case notes for previous Samling case (PT Tunas Borneo Plantations) on page 17.

5. www.samling.com/

Supply Chain Information

Supply Chain Links: Traders and Biofuel Companies	AAK	BLD Plantation Bhd	Itochu	Lipsa
LPF/0007 Samling Jelalong (OP)				
Samling	x	x	x	x

Supply Chain Links: Traders and Biofuel Companies	Neste	Olam	Sarawak Oil Palms
LPF/0007 Samling Jelalong (OP)			
Samling	x	x	x

Supply Chain Links: Consumer Brands	Avon	Colgate- Palmolive	Danone	FrieslandCampina
LPF/0007 Samling Jelalong (OP)				
Samling	x	x	x	x

Supply Chain Links: Consumer Brands	General Mills	Johnson & Johnson	Kellogg's	Mondelez
LPF/0007 Samling Jelalong (OP)				
Samling	x	x	x	x

Supply Chain Information (continued)

Supply Chain Links: Consumer Brands	Nestle	Nisshin Oillio	PepsiCo	PZ Cussons
LPF/0007 Samling Jelalong (OP)				
Samling	x	x	x	x

Supply Chain Links: Consumer Brands	Reckitt Benckiser	Vandemoortele
LPF/0007 Samling Jelalong (OP)		
Samling	x	x

Supply Chain Information (continued)

Although SOPB published an NDPE in January 2019, the company has not published a mill list disclosing its suppliers and sources of palm oil. Although, SOPB has listed several Mighty Earth cases on Samling in its grievance list, the company have failed to address these grievances or suspend Samling.

A number of traders, biofuel companies and consumers brands are sourcing palm oil originating from SOPB (see tables below). These companies should file grievances with SOPB, requesting that it acts on the Samling case and suspends them.

Supply Chain Links: Traders and Biofuel Companies	AAK	Cargill	KLK	Lipsa
Sarawak Oil Palms	x	x	x	x

Supply Chain Links: Traders and Biofuel Companies	Louis Dreyfus	Mewah	Neste	Sime Darby
Sarawak Oil Palms	x	x	x	x

Supply Chain Links: Consumer Brands	Avon	Colgate-Palmolive	Friesland Campina	Hershey	Johnson & Johnson
Sarawak Oil Palms	x	x	x	x	x

Supply Chain Links: Consumer Brands	Kellogg's	Mars	P&G	PepsiCo
Sarawak Oil Palms	x	x	x	x

Supply Chain Links: Consumer Brands	PZ Cussons	Reckitt Benckiser	Unilever	Upfield	Vandemoortele
Sarawak Oil Palms	x	x	x	x	x

Additional cases identified using screened GLAD alerts

The following cases have been identified through screened GLAD alerts (see methodology below). As these cases are either repeat cases from previous Rapid Response reports or where Mighty Earth did not determine any supply chain links for these concessions/groups, no satellite image analysis was conducted for these cases to save resources.

Mighty Earth expects that palm oil traders and biofuel companies conduct their own due diligence to determine if they are exposed to such companies/Groups and conduct their own satellite image analysis of these cases.

Methodology:

For Indonesia, GLAD alerts are screened using the Indonesia Ministry of Forestry and the Environment land cover dataset for 2017 which classifies existing palm oil plantations and primary and secondary forest. Hence, only GLAD alerts in primary and secondary forest according to that dataset are included.

For Malaysia, GLAD alerts are screened to exclude known plantation areas using the Global Forest Watch (GFW) plantations dataset. This automatically eliminates the most common false positives, i.e. the replanting of palm that existed prior to the year 2000.

New Cases - Unknown Supply Chain Links			
Concession license area	Group/ownership	Area covered by screened GLAD alerts (ha)	Time period
PT Banyan Tumbuh Lestari	PT Buana Pratama Cipta (formerly Provident Agro)	14.02	March 16-April 15, 2020
PT Tualang Raya	Unknown Group	27.32	March 16-April 15, 2020

Repeat Cases - Known Supply Chain Links

Concession license area	Group/ownership	Area covered by screened GLAD alerts (ha)	Time period	Rapid Response reports related to each case*
PT Citra Agro Abadi	Cilandry Anky Abadi Group	160.70	March 16-April 15, 2020	Reports 17, 23, 25, 26
PT Permata Sawit Mandiri	Sepanjang Group (PT PSM formerly owned by Genting Group)	484.40	March 16-April 15, 2020	Reports 15, 16, 17, 19, 20, 23, 24
PT Mulia Inti Perkasa	Widya Corporation	134.66	March 16-April 15, 2020	Reports 6, 15, 16, 20, 21, 22, 23, 24, 25, 26
PT Internusa Jaya Sejahtera	Indonusa Group	111.11	March 16-April 15, 2020	Reports 7, 10, 11, 12, 15, 16, 17, 20, 22, 23, 25
PT Sumber Alam Selaras	NPC Resources Bhd	101.69	March 16-April 15, 2020	Reports 23, 25, 26
PT Persada Era Agro Kencana	Mulia Sawit Group	83.56	March 16-April 15, 2020	Reports 9, 10, 11, 12, 15, 16, 17, 18, 19, 20, 22, 23, 24, 25
PT Putra Utama Lestari	Dharma Satya Nusantara	37.33	March 16-April 15, 2020	Reports 20 and 23
PT Medcopapua Hijau Selaras	Capitol Group	35.08	March 16-April 15, 2020	Reports 25 and 26
PT Sabhantara Rawi Sentosa	Dhanistha Surya Nusantara	25.79	March 16-April 15, 2020	Reports 21, 23, 26
PT Makmur Jaya Malindo	Pinehill Pacific	22.30	March 16-April 15, 2020	Reports 18 and 19
PT Bulungan Surya Mas Pratama 2	Global Enterprise Sdn Bhd	22.19	March 16-April 15, 2020	Report 21
PT Damai Agro Sejahtera	Bumitama Group	20.90	March 16-April 15, 2020	Reports 22, 23, 26

*Rapid Response reports available on Mighty Earth's Rapid Response website page, [linked here](#).

Repeat Cases - Known Supply Chain Links

Concession license area	Group/ownership	Area covered by screened GLAD alerts (ha)	Time period	Rapid Response reports related to each case*
PT Putra Utama Lestari	Dharma Satya Nusantara	20.14	March 16-April 15, 2020	Reports 20 and 23
PT Megakarya Jaya Raya	Hayel Saeed Anam Group	19.78	March 16-April 15, 2020	Reports 5, 23, 26
PT Bina Sarana Sawit Utama	Samuel International Group	18.28	March 16-April 15, 2020	Reports 19, 20, 24, 26
PT Citra Sawit Cemerlang	Genting Plantations Bhd	17.65	March 16-April 15, 2020	Reports 14, 15, 16, 17, 19, 23, 24
PT Tirta Madu Sawit Jaya	Fangiono family	16.38	March 16-April 15, 2020	Reports 22, 24, 25
PT Persada Era Agro Kencana	Mulia Sawit Group	14.08	March 16-April 15, 2020	Reports 9, 10, 11, 12, 15, 16, 17, 18, 19, 20, 22, 23, 24, 25
PT Bulungan Surya Mas Pratama	Global Enterprise Sdn Bhd	13.38	March 16-April 15, 2020	Report 21
PT Usaha Sawit Unggul	Asian Agri (RGE)	12.31	March 16-April 15, 2020	Reports 17, 18, 20, 24, 26
PT Mekar Karya Kahuripan	Makin Group	12.00	March 16-April 15, 2020	Reports 17, 21, 22, 23, 26
PT Jaya Jadi Utama	CB Industrial Product Holding	11.93	March 16-April 15, 2020	Reports 15, 20, 23, 26
PT Kahayan Agro Plantation	Anglo-Eastern Plantations	10.30	March 16-April 15, 2020	Reports 1, 14, 15, 18, 19, 20, 23, 24, 25
LPF/0018 Shin Yang OP Planting Area	Shin Yang Group	101.11	March 16-April 15, 2020	LPF/0018 Shin Yang OP Planting Area
BLD Plantation Bhd	KTS Holdings Sdn Bhd	54.86	March 16-April 15, 2020	BLD Plantation Bhd

*Rapid Response reports available on Mighty Earth's Rapid Response website page, [linked here](#).

Repeat Cases - Known Supply Chain Links

Concession license area	Group/ownership	Area covered by screened GLAD alerts (ha)	Time period	Rapid Response reports related to each case*
Danum Sinar Sdn Bhd	Puncak Niaga Holdings Bhd	52.99	March 16-April 15, 2020	Danum Sinar Sdn Bhd
Dataran Linau Sdn Bhd (Lot 1 Block 14 Murum LD)	Shin Yang Group / Sarawak Oil Palms Bhd	47.19	March 16-April 15, 2020	Dataran Linau Sdn Bhd (Lot 1 Block 14 Murum LD)
Almabumi Plantation Sdn Bhd	BBC Holdings Sdn Bhd	19.72	March 16-April 15, 2020	Almabumi Plantation Sdn Bhd
Woodijaya Sdn Bhd (Lot 197)	Rimbunan Hijau Group	16.84	March 16-April 15, 2020	Woodijaya Sdn Bhd (Lot 197)
LPF/0006 Samling Lana	Samling Group	13.54	March 16-April 15, 2020	LPF/0006 Samling Lana
Linau Sinar Sdn Bhd (Metalon OP Estate, Lot 2, Danum LD)	Shin Yang Group	13.23	March 16-April 15, 2020	Linau Sinar Sdn Bhd (Metalon OP Estate, Lot 2, Danum LD)
Baram Estate, part of LPF/0004	Woodman Group	9.96	March 16-April 15, 2020	Baram Estate, part of LPF/0004
Timrest Sdn Bhd	Rimbunan Hijau Group	9.74	March 16-April 15, 2020	Timrest Sdn Bhd
Hydroflow Sdn Bhd	TH Plantations Bhd	9.60	March 16-April 15, 2020	Hydroflow Sdn Bhd
Adong estate, part of LPF 0004	Woodman Group	8.26	March 16-April 15, 2020	Adong estate, part of LPF 0004
Poh Zhen Sdn Bhd	Rimbunan Hijau Group	7.89	March 16-April 15, 2020	Poh Zhen Sdn Bhd

*Rapid Response reports available on Mighty Earth's Rapid Response website page, [linked here](#).

Repeat Cases - No Known Supply Chain Links

Concession license area	Group/ownership	Area covered by screened GLAD alerts (ha)	Time period	Rapid Response reports related to each case*
PT Berau Karetindo Lestari	Korompis family	100.06	March 16-April 15, 2020	Reports 2, 6, 9, 15, 16, 19, 20, 21, 22
PT Tri Investama	Green Yield Pte Ltd	11.07	March 16-April 15, 2020	Reports 20, 21, 22, 23, 24, 25
PT Prasetya Mitra Muda (Block II)	Unknown Group	14.17	March 16-April 15, 2020	Reports 6, 17, 19
PT Marita Makmur Jaya	Unknown Group	14.24	March 16-April 15, 2020	Reports 12, 15, 17, 19, 22, 24, 26
PT Gapura Alas Lestari	Unknown Group	14.87	March 16-April 15, 2020	Reports 16, 19, 20, 23, 25, 26
PT Future Agropia Indonesia	JSK International Co Ltd (Korea)	15.78	March 16-April 15, 2020	Reports 17 and 20
PT Citrapermata Serunding	Unknown Group	15.88	March 16-April 15, 2020	Reports 20, 23, 26
PT Perkebunan Inti Sendawar	IMC Plantations	17.81	March 16-April 15, 2020	Reports 23 and 26
PT Cipta Karya Sesayap	Unknown Group	19.55	March 16-April 15, 2020	Reports 17, 22, 23, 25
PT Sumber Sawit Mitrajaya	Unknown Group	20.06	March 16-April 15, 2020	Reports 15, 17, 23, 25, 26
PT Pipit Citra Persada	Unknown Group	22.03	March 16-April 15, 2020	Reports 6, 17, 20
PT Sebaung Sawit Plantation	Shanghai Xinjiu Chemical Co Ltd	22.87	March 16-April 15, 2020	Reports 8, 12, 13, 16, 20, 21, 22, 23, 25
PT Barito Riau Jaya	Unknown Group	24.01	March 16-April 15, 2020	Reports 22, 23, 26

*Rapid Response reports available on Mighty Earth's Rapid Response website page, [linked here](#).

Repeat Cases - No Known Supply Chain Links

Concession license area	Group/ownership	Area covered by screened GLAD alerts (ha)	Time period	Rapid Response reports related to each case*
PT Triomas Forestry Development Indonesia	Unknown Group	43.99	March 16-April 15, 2020	Reports 17, 22, 23, 24
PT Palem Segar Lestari	Henan Jiujiu Chemical Co. Ltd	57.88	March 16-April 15, 2020	Reports 5, 7, 12, 16, 18, 20, 21, 22, 23, 25, 26
PT Menthobi Mitra Lestari	Unknown Group (PT MML formerly owned by PT Bakrie Sumatra Plantations Tbk)	64.25	March 16-April 15, 2020	Reports 16, 17, 20, 22
PT Agrindo Sukses Sejahtera	Starmas Sentosa Mandiri	95.34	March 16-April 15, 2020	Reports 8, 16, 22, 26
Telliana Enterprise Sdn Bhd	Unknown Group	37.09	March 16-April 15, 2020	Reports 18, 19, 20, 26
Formerly Ekran Bhd	Unknown Group	27.30	March 16-April 15, 2020	Reports 19, 20, 21, 23, 25, 26
Titanium Management Sdn Bhd (Part 1)	Unknown Group	26.03	March 16-April 15, 2020	Reports 18, 19, 21, 26
Titanium Management Sdn Bhd (Part 2)	Unknown Group	17.39	March 16-April 15, 2020	Reports 18, 19, 21, 26
Limba Jaya Timber Sdn Bhd (Limbang)	Lee Ling Timber Sdn Bhd	7.95	March 16-April 15, 2020	Reports 18, 21, 26
LPF/0038 Limba Jaya Timber Sdn Bhd (Part 2)	Lee Ling Timber Sdn Bhd	7.88	March 16-April 15, 2020	Reports 18, 21, 26

*Rapid Response reports available on Mighty Earth's Rapid Response website page, [linked here](#).

The work of Mighty Earth is supported by Waxman Strategies. Waxman Strategies' work on forest conservation is funded in part by Aidenvironment. Waxman is required under 22 U.S.C. § 614 to disclose that this material is distributed on behalf of the aforementioned organization, working under grant from the Norwegian Agency for Development Cooperation. Additional information is on file with the Department of Justice, Washington, D.C.