



MIGHTY EARTH



RAPID RESPONSE Palm Oil Report

Report 26
April 2020



Prepared with

MapHubs
Waxman

Table of Contents

Cases identified using Sentinel imagery

Indonesian Companies

New Cases

Teladan Prima Group: PT Tanjung Buyu Perkasa Plantation	4
CB Industrial Product Holdings: PT Sawit Lamandau Raya	8

Unresolved Cases

CB Industrial Product Holdings: PT Jaya Jadi Utama	11
Palma Serasih Group: PT Global Primatama Mandiri	14

Malaysian Companies

Unresolved Case

Samling Group: LPF/0008 Marudi & Batu Belah	17
---	----

Additional cases identified using filtered GLAD alerts

Repeat Cases

PT Metro Lestari Jaya: PT Sawit Mandiri Lestari	22
NPC Resources Bhd: PT Sumber Alam Selaras	22
Bumitama Group: PT Damai Agro Sejahtera	22
RGE Group: PT Usaha Sawit Unggul	22
Cilandry Anky Abadi Group: PT Citra Agro Abadi	22
Unknown Group: PT Gapura Alas Lestari	22
Makin Group: PT Mekar Karya Kahuripan	22
Unknown Group: PT Gapura Alas Lestari	22
Mitra Jaya Group: PT Sumer Sawit Mitrajaya	23
Capitol Group: PT Medcopapua Hijau Selaras	23
Henan Jiujiu Chemical Co Ltd: PT Palem Segar Lestari	23
IMC Plantations: PT Perkebunan Inti Sendawar	23
Samuel International Group: PT Bina Sarana Sawit Utama	23
Unknown Group: PT Ichiko Agro Lestari	23
Unknown Group: PT Sumber Rahmat Sentosa	23
Salim/IndoGunta: PT Rimbun Sawit Papua	23
Widya Corporation Group: PT Mulia Inti Perkasa	23
Unknown Group: PT Marita Makmur Jaya	23
Unknown Group: PT Katingan Hijau Lestari	23
Unknown Group: PT Barito Riau Jaya	23

Table of Contents

Additional cases identified using filtered GLAD alerts (continued)

Repeat Cases (continued)

Starmas Sentosa Mandiri: PT Agrindo Sukses Sejahtera	23
Unknown Group: PT Citrapermata Serunding	24
Agrosubur Group: PT Karya Dewi Purtra	24
Unknown Group (former Makin Group): PT Krida Dharma Kahuripan	24
Alas Kusuma: PT Kusuma Alam Sari	24
Dhanistha Surya Nusantara: PT Sabhantara Rawi Sentosa	24
Kirana Megatara: PT Putra Katingan Pratama	24
Unknown Group: PT Olong Jaya Raya	24
Agrosubur Group: PT Karya Dewi Putra	24
Puncak Niaga Holdings Bhd: Danum Sinar Sdn Bhd	24
Samling Group: LPF/0006 Samling Lana	24
Samling Group: LPF/0007 Samling Jelalong (OP)	24
Tradewinds Plantation Bhd: Trans Kenyalang Sdn Bhd	25
Unknown Group: Telliana Enterprise Sdn Bhd	25
Unknown Group: Titanium Management Sdn Bhd (Part 1)	25
Shin Yang Group: Dataran Linau OP (SY) (Lot 1 Block 14 Murum LD)	25
Shin Yang Group: LPF/0018 Shin Yang OP Planting Area	25
Shin Yang Group: Linau Sinar Sdn Bhd	25
Double Dynasty Holdings Sdn Bhd: Mutiara Pelita Genaan Plantation Sdn Bhd	25
Samling Group: LPF/0007 Samling Jelalong (Part 3)	25
Unknown Group: Formerly Ekran Plantation	25
Samling Group: LPF/0007 Samling Jelalong (Part 1)	25
Rimbunan Hijau Group: Poh Zhen Sdn Bhd	25
Rimbunan Hijau Group: Woodijaya Sdn Bhd (Lot 197)	25
Kwantas Corporation Bhd: Kwantas Pelita Plantation (Balingian) Sdn Bhd	26
BBC Holdings Sdn Bhd: Almabumi Plantation Sdn Bhd	26
Lee Ling Timber Sdn Bhd: LPF/0038 Limba Jaya Timber Sdn Bhd (Part 2)	26
Lee Ling Timber Sdn Bhd: Limba Jaya Timber Sdn Bhd (Limbang)	26

Supply chain information:

Supply chain information included in Rapid Response reports is based on the latest public versions of mill disclosures, recent export data and grievance logs. Mighty Earth encourages companies to send updated versions of mill disclosures as soon as they become available and to share any decision to suspend relations with a given group/company listed in those mill disclosures; please send to rapidresponse@mightyearth.org.

Mighty Earth is now including biofuel companies in the supply chain tables of Rapid Response reports, as these companies have both direct and indirect trading relationships with groups highlighted in these reports and should be filing grievances on these cases. These biofuel companies are listed in the “Traders and Biofuel Companies” tables.

New Case

Group: Teladan Prima

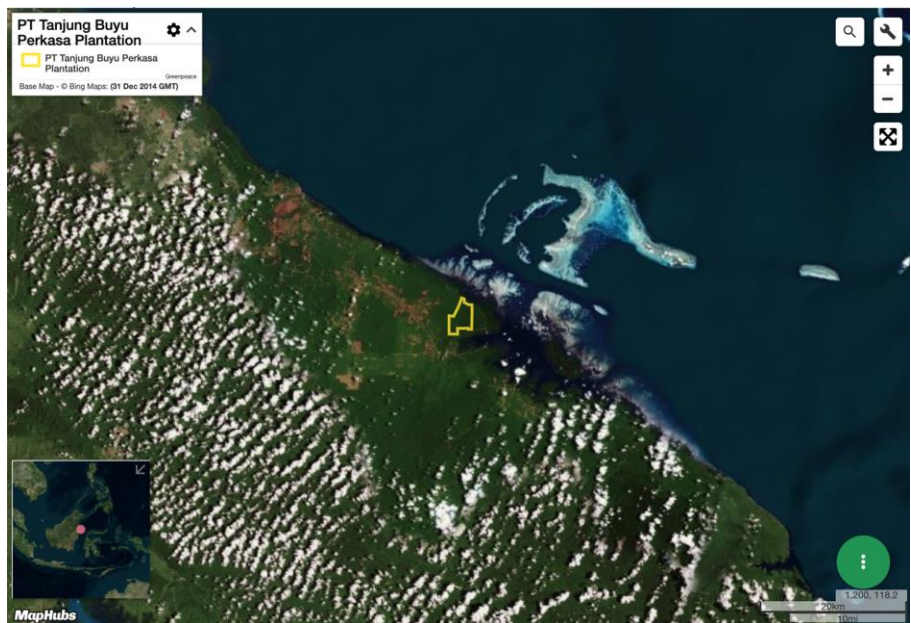
PT Tanjung Buyu Perkasa Plantation

Concession location: (1.461, 118.372)

Deforestation and/or peat development

Report	Deforestation (ha)	Peat development (ha)	Peat forest development (ha)	Clearance prep/Stacking lines (ha)	Time period
Report 26	140	-	-	247	September 15, 2019- February 7, 2020

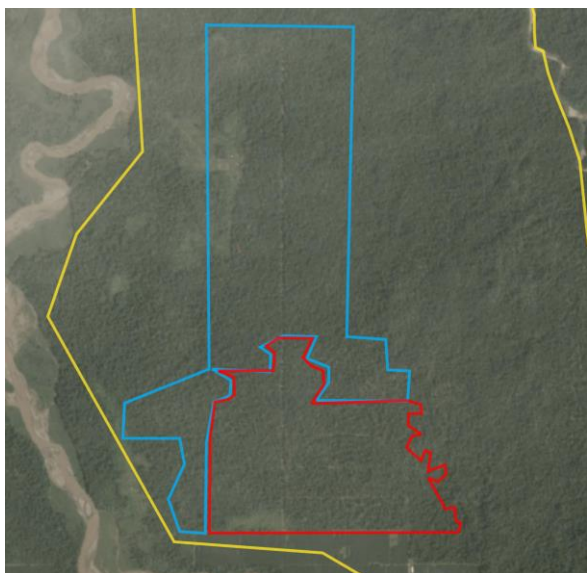
Satellite imagery (see below) shows that between September 15, 2019 and February 7, 2020 a total of 140 hectares of forest were cleared and 247 hectares were prepared for clearance in the PT Tanjung Buyu Perkasa Plantation concession. (Imagery: Contains modified Copernicus Sentinel data 2020)



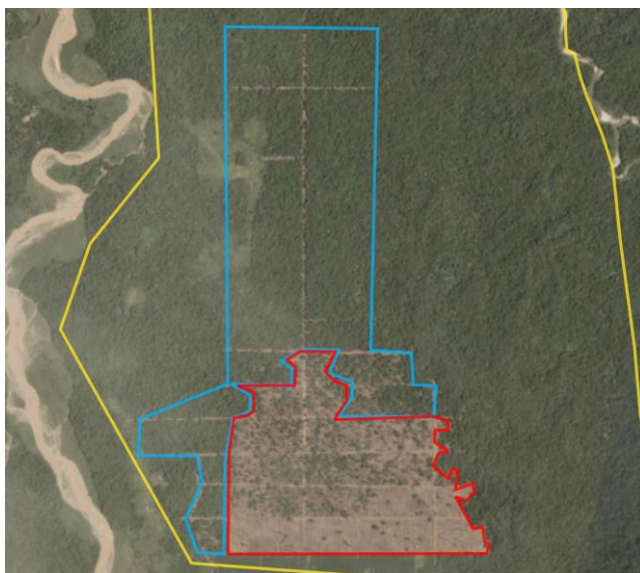
Alert Imagery (before and after satellite images)

Clearance location: (1.461, 118.372)

Date: September 15, 2019



Date: February 7, 2020



Ownership Information

PT Tanjung Buyu Perkasa Plantation is part of the Teladan Prima Group.¹

1. PT TUV Rheinland Indonesia, ISPO certification document:
http://ispo-org.or.id/images/notifikasi/398.Surat%20Informasi%20Audit%20ISPO%20ke%20Komisi_TBPP.pdf

Supply Chain Information

Supply Chain Links: Traders and Biofuel Companies	AAK	ADM	KLK	Neste
PT Tanjung Buyu Perkasa Plantation	x	x	x	x
Teladan Prima Group	x	x	x	x

Supply Chain Links: Traders and Biofuel Companies	Olam	Sime Darby	Wilmar
PT Tanjung Buyu Perkasa Plantation	x	x	x
Teladan Prima Group	x	x	x

Supply Chain Links: Consumer Brands	Avon	Colgate- Palmolive	FrieslandCampina	General Mills
PT Tanjung Buyu Perkasa Plantation	x	x	x	x
Teladan Prima Group	x	x	x	x

Supply Chain Links: Consumer Brands	Hershey	Kellogg's	Mars	Mondelez
PT Tanjung Buyu Perkasa Plantation	x	x	x	x
Teladan Prima Group	x	x	x	x

Supply Chain Information (continued)

Supply Chain Links: Consumer Brands	Nestle	P&G	PepsiCo	Reckitt Benckiser
PT Tanjung Buyu Perkasa Plantation	x	x	x	x
Teladan Prima Group	x	x	x	x

New Case

Group: CB Industrial Product Holdings

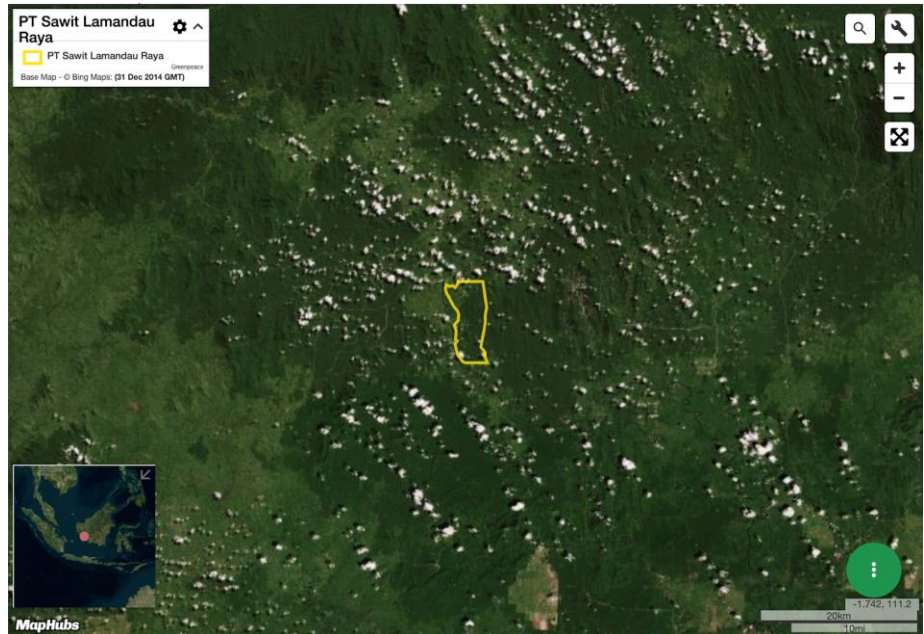
PT Sawit Lamandau Raya

Concession location: (-1.803, 111.132)

Deforestation and/or peat development

Report	Deforestation (ha)	Peat development (ha)	Peat forest development (ha)	Clearance prep/Stacking lines (ha)	Time period
Report 26	22	-	-	-	September 19, 2019- March 27, 2020

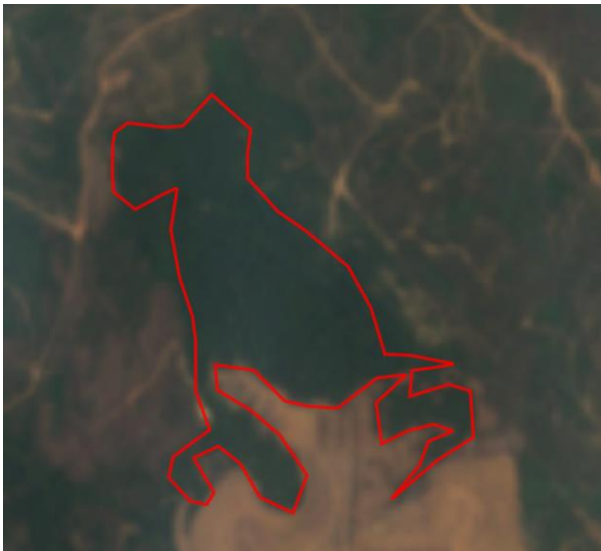
Satellite imagery (see below) shows that between September 19, 2019 and March 27, 2020 a total of 22 hectares of forest were cleared in the PT Sawit Lamandau Raya concession. (Imagery: Contains modified Copernicus Sentinel data 2020)



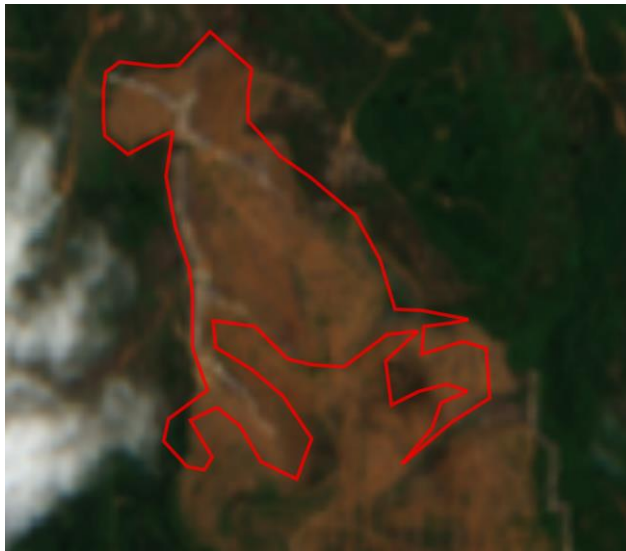
Alert Imagery (before and after satellite images)

Clearance location: (-1.803, 111.132)

Date: September 19, 2019



Date: March 27, 2020



Ownership Information

PT Sawit Lamandau Raya is part of the CBIP Group (CB Industrial Product Holdings).³

3. CBIP Annual Report (2018): <http://cbip.com.my/wp-content/uploads/ar2018.pdf>

Supply Chain Information

Supply Chain Links: Traders and Biofuel Companies	Apical	Bunge
PT Sawit Lamandau Raya		
CB Industrial Product Holdings	x	x

Supply Chain Links: Consumer Brands	Colgate-Palmolive	P&G	PZ Cussons	Unilever	Upfield
PT Sawit Lamandau Raya					
CB Industrial Product Holdings	x	x	x	x	x

Unresolved Case

Group: CB Industrial Product Holdings

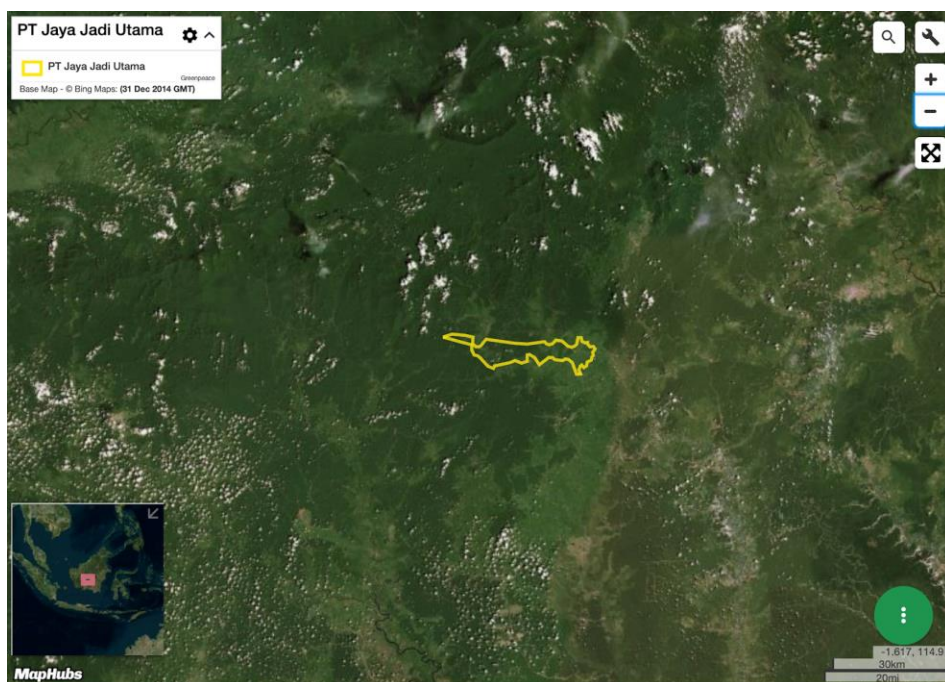
PT Jaya Jadi Utama

Concession location: (-0.867, 113.477)

Deforestation and/or peat development

Report	Deforestation (ha)	Peat development (ha)	Peat forest development (ha)	Clearance prep/Stacking lines (ha)	Time period
Report 15	7	-	-	4	March 15-May 2, 2019
Report 20	22 (via GLAD)	-	-	-	August 15-September 15, 2019
Report 23	11 (via GLAD)	-	-	-	November 15-December 6, 2019
Report 26	14	-	-	163	May 24, 2019-March 24, 2020

Satellite imagery (see below) shows that between May 24, 2019 and March 24, 2020 a total of 14 hectares of forest were cleared and 163 hectares were prepared for clearance in the PT Jaya Jadi Utama concession. (Imagery: Contains modified Copernicus Sentinel data 2020)



Alert Imagery (before and after satellite images)

Clearance location: (-0.87, 133.316)

Date: May 24, 2019



Date: March 24, 2020



Clearance location: (-0.854, 113.325)

Date: May 24, 2019



Date: March 24, 2020



Ownership Information

PT Jaya Jadi Utama is part of the CBIP Group (CB Industrial Product Holdings).⁴

4. CBIP Annual Report (2018): <http://cbip.com.my/wp-content/uploads/ar2018.pdf>

Supply Chain Information

Supply Chain Links: Traders and Biofuel Companies	Apical	Bunge
PT Jaya Jadi Utama		
CB Industrial Product Holdings	x	x

Supply Chain Links: Consumer Brands	Colgate-Palmolive	P&G	PZ Cussons	Unilever	Upfield
PT Jaya Jadi Utama					
CB Industrial Product Holdings	x	x	x	x	x

Unresolved Case

Group: Palma Serasih

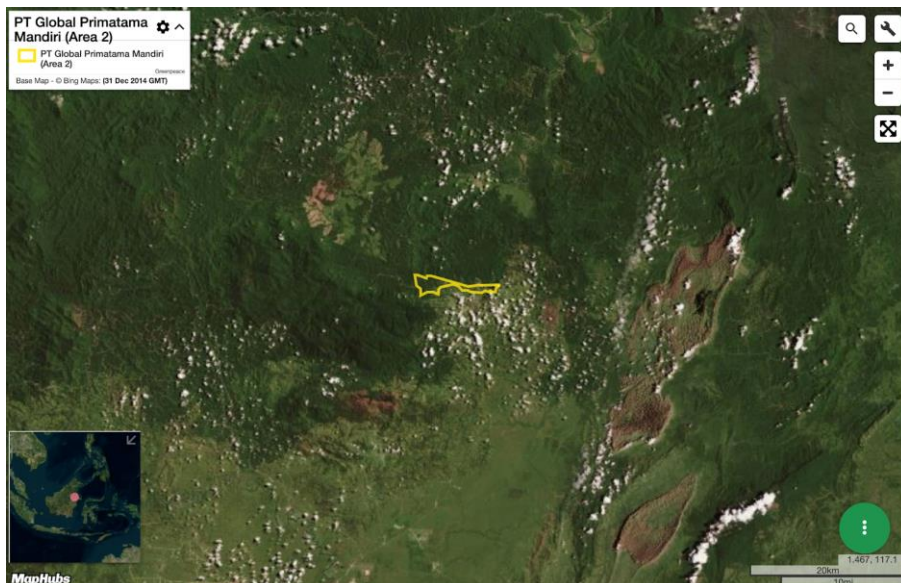
PT Global Primatama Mandiri (Area 2)

Concession location: (1.54, 117.099)

Deforestation and/or peat development

Report	Deforestation (ha)	Peat development (ha)	Peat forest development (ha)	Clearance prep/Stacking lines (ha)	Time period
Report 13	102	-	-	-	January 7-February 7, 2019
Report 21	19 (GLAD alerts)	-	-	-	September 16-October 15, 2019
Report 22	73 (GLAD alerts)	-	-	-	October 15-November 14, 2019
Report 24	19 (GLAD alerts)	-	-	-	December 15-January 15, 2020
Report 26	130	-	-	-	June 5, 2019-March 16, 2020

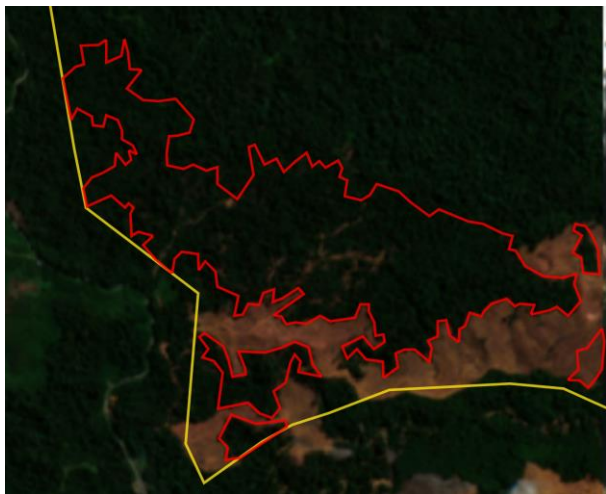
Satellite imagery (see below) shows that between June 5, 2019 and March 16, 2020 a total of 130 hectares of forest were cleared in the PT Global Primatama Mandiri (Area 2) concession. (Imagery: Contains modified Copernicus Sentinel data 2020)



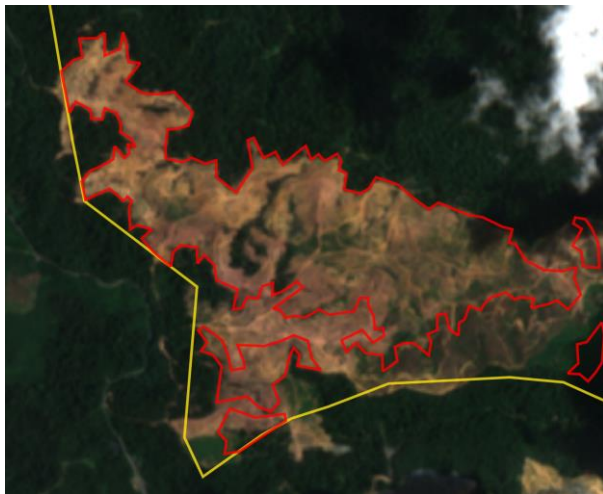
Alert Imagery (before and after satellite images)

Clearance location: (1.541, 117.058)

Date: June 5, 2019



Date: March 16, 2020



Ownership Information

PT Global Primatama Mandiri (Area 2) is part of the Palma Serasih Group.⁵

5. Notary Act.

Supply Chain Information

Supply Chain Links: Traders and Biofuel Companies	Louis Dreyfus	Neste
PT Global Primatama Mandiri (Area 2)		
Palma Serasih Group	x	x

Supply Chain Links: Consumer Brands	Avon	Mars	PZ Cussons
PT Global Primatama Mandiri (Area 2)			
Palma Serasih Group	x	x	x

Unresolved Case

Group: Samling

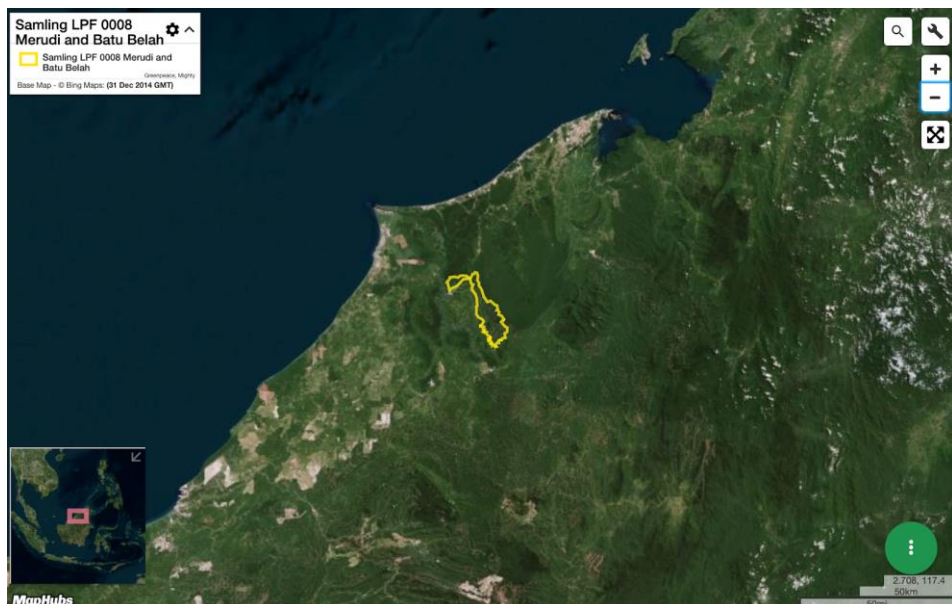
LPF/0008 Marudi & Batu Belah

Concession location: (4.096, 114.493)

Deforestation and/or peat development

Report	Deforestation (ha)	Peat development (ha)	Peat forest development (ha)	Clearance prep/Stacking lines (ha)	Time period
Report 13	44	-	-	-	January 7-February 16, 2019
Report 17	12 (GLAD alerts)	-	-	-	May 19-June 20, 2019
Report 19	13 (GLAD alerts)	-	-	-	July 15-August 15, 2019
Report 20	166 (GLAD alerts)	-	-	-	August 15-September 15, 2019
Report 21	9 (GLAD alerts)	-	-	-	September 16-October 15, 2019
Report 24	359	-	-	-	February 18, 2019 - January 7, 2020
Report 26	107	-	-	-	December 20, 2019-March 19, 2020

Satellite imagery (see below) shows that between December 20, 2019 and March 19, 2020 a total of 107 hectares of forest were cleared in the LPF/0008 Marudi & Batu Belah concession. (Imagery: Contains modified Copernicus Sentinel data 2020)



Palm oil traders continue to turn a blind eye to Samling’s large-scale deforestation

The map below indicates that between 2014 and 2018, **there was a total of 4,560 hectares of ‘tree cover loss with >75% tree canopy density’ inside this concession.**⁶ Based on satellite imagery analysis, there was an additional 403 ha of deforestation within the concession in 2019.

This repeat case is included in this report because many palm oil traders continue to have the Samling Group within their supply chain, despite the group’s continued involvement in large-scale deforestation in Sarawak and, in particular, within the LPF/0008 Marudi & Batu Belah concession bordering Brunei.

Mighty Earth argues that any trader that continues to source Samling palm oil is financially supporting ongoing deforestation (albeit indirectly). **Most traders have failed to address this egregious case of deforestation in Sarawak in their grievance systems, under the guise that this deforestation is not for oil palm and therefore they can turn a blind eye to this deforestation.**



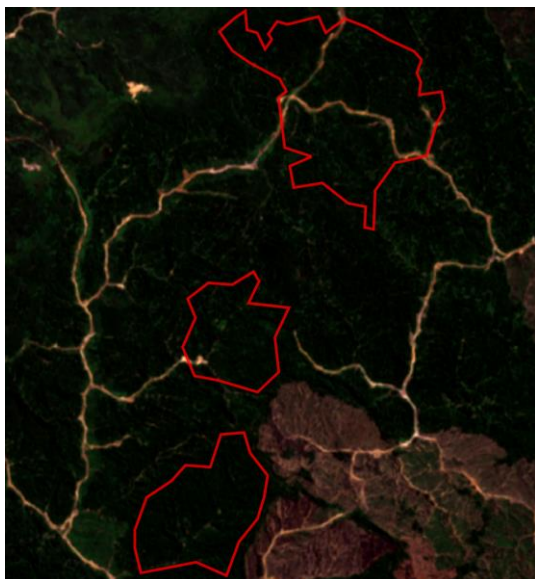
The areas in brown within the LPF/0008 Marudi & Batu Belah concession boundary show primary forest loss between 2002 and 2018.

6. Hansen, M. C., P. V. Potapov, R. Moore, M. Hancher, S. A. Turubanova, A. Tyukavina, D. Thau, S. V. Stehman, S. J. Goetz, T. R. Loveland, A. Kommareddy, A. Egorov, L. Chini, C. O. Justice, and J. R. G. Townshend. 2013. “High-Resolution Global Maps of 21st-Century Forest Cover Change.” *Science* 342 (15 November): 850–53. Data available on-line from: <http://earthenginepartners.appspot.com/science-2013-global-forest>. Accessed through Global Forest Watch on January 28, 2020. www.globalforestwatch.org

Alert Imagery (before and after satellite images)

Clearance location: (4.01, 114.54)

Date: December 20, 2019



Date: March 19, 2020



Ownership Information

LPF/0008 Marudi & Batu Belah was issued to Samling Reforestation (Bintulu) Sdn Bhd, a subsidiary of Syarikat Samling Timber Sdn Bhd (SST) in Sarawak, Malaysia and a member of the Samling Group.⁷

7. www.samling.com/images/marudi/Lo8_Proposed_MTCS_Area_MAP_5-4_rev1.jpg

Supply Chain Information

Three palm oil traders have recently suspended the Samling Group from their supply chain (via trading partners) due to NDPE non-compliance issues:

ADM's grievance log⁸ shows that the company suspended Samling from its supply chain in March 2020, based on cases highlighted by Mighty Earth's Rapid Response reports.

Cargill's grievance log⁹ shows that the company suspended Samling from its supply chain in February 2020.

Wilmar's grievance log¹⁰ shows that the company suspended Samling from its supply chain in January 2020.

Supply Chain Links: Traders and Biofuel Companies	AAK	BLD	Fuji Oil	IOI	Itochu
LPF/0008 Marudi & Batu Belah					
Samling	x	x	x	x	x

Supply Chain Links: Traders and Biofuel Companies	KLK	Neste	Olam	Sarawak Oil Palms	Sime Darby
LPF/0008 Marudi & Batu Belah					
Samling	x	x	x	x	x

Supply Chain Links: Consumer Brands	Avon	BLD	Colgate-Palmolive	FrieslandCampina	General Mills
LPF/0008 Marudi & Batu Belah					
Samling	x	x	x	x	x

8. ADM's grievance log, <https://assets.adm.com/Sustainability/Grievance-and-Resolution-Logs/Grievance-and-Resolution-Log-3-20-20.pdf>

9. LDC's grievance log, <https://www.cargill.com/sustainability/palm-oil/managing-grievances>

10. Wilmar's grievance log, <https://www.wilmar-international.com/sustainability/grievance-procedure>

Supply Chain Information (continued)

Supply Chain Links: Consumer Brands	Hershey	ISF	Johnson & Johnson	Kellogg's	Mars
LPF 0008/Merudi & Batu Bela					
Samling	x	x	x	x	x

Supply Chain Links: Consumer Brands	Mondelez	Nestle	P&G	PepsiCo	PZ Cussons
LPF 0008/Merudi & Batu Bela					
Samling	x	x	x	x	x

Supply Chain Links: Consumer Brands	Reckitt Benckiser	Unilever	Upfield
LPF 0008/Merudi & Batu Bela			
Samling	x	x	x

Additional cases identified using screened GLAD alerts

The following cases have been identified through screened GLAD alerts (see methodology below). As these cases are either repeat cases from previous Rapid Response reports or where Mighty Earth did not determine any supply chain links for these concessions/groups, no satellite image analysis was conducted for these cases to save resources.

Mighty Earth expects that palm oil traders and biofuel companies conduct their own due diligence to determine if they are exposed to such companies/Groups. Further, traders and biofuel companies without supply chain links to these cases should put them on their ‘no buy’ lists.

Methodology:

For Indonesia, GLAD alerts are screened using the Indonesia Ministry of Forestry and the Environment land cover dataset for 2017 which classifies existing palm oil plantations and primary and secondary forest. Hence, only GLAD alerts in primary and secondary forest according to that dataset are included.

For Malaysia, GLAD alerts are screened to exclude known plantation areas using the Global Forest Watch (GFW) plantations dataset. This automatically eliminates the most common false positives, i.e. the replanting of palm that existed prior to the year 2000.

Repeat Cases				
Concession license area	Group/ownership	Area covered by screened GLAD alerts (ha)	Time period	Rapid Response reports related to each case*
PT Sawit Mandiri Lestari	PT Metro Lestari Jaya	202.05	February 17, 2020 - March 16, 2020	Reports 3, 7, 8, 9, 10, 14, 15, 16, 17, 18, 20, 22
PT Sumber Alam Selaras	NPC Resources Bhd	132.52	February 17, 2020 - March 16, 2020	Reports 23 and 25
PT Damai Agro Sejahtera	Bumitama Group	104.83	February 17, 2020 - March 16, 2020	Reports 22 and 23
PT Usaha Sawit Unggul	RGE Group	98.5	February 17, 2020 - March 16, 2020	Reports 17, 18, 20, 24
PT Citra Agro Abadi	Cilandry Anky Abadi Group	98.46	February 17, 2020 - March 16, 2020	Reports 17, 23, 25
PT Gapura Alas Lestari	Unknown Group	91.16	February 17, 2020 - March 16, 2020	Reports 16, 19, 20, 23, 25
PT Mekar Karya Kahuripan	Makin Group	88.71	February 17, 2020 - March 16, 2020	Reports 17, 21, 22, 23
PT Gapura Alas Lestari	Unknown Group	50.81	February 17, 2020 - March 16, 2020	Reports 16, 19, 20, 23, 25

*Rapid Response reports available on Mighty Earth’s Rapid Response website page, [linked here](#).

Repeat Cases

Concession license area	Group/ownership	Area covered by screened GLAD alerts (ha)	Time period	Rapid Response reports related to each case*
PT Sumber Sawit Mitrajaya	Mitra Jaya Group	41.51	February 17, 2020 - March 16, 2020	Reports 15, 17, 23
PT Medcopapua Hijau Selaras	Capitol Group	40.66	February 17, 2020 - March 16, 2020	Report 25
PT Palem Segar Lestari	Henan Jiujiu Chemical Co Ltd	38.1	February 17, 2020 - March 16, 2020	Reports 5, 7, 12, 16, 18, 20, 21, 22, 23, 25
PT Perkebunan Inti Sendawar	IMC Plantations	34.31	February 17, 2020 - March 16, 2020	Report 23
PT Bina Sarana Sawit Utama	Samuel International Group	31.6	February 17, 2020 - March 16, 2020	Reports 19, 20, 24
PT Ichiko Agro Lestari	Unknown Group	30.75	February 17, 2020 - March 16, 2020	Reports 14, 16, 17, 19, 20, 21, 23, 24
PT Sumber Rahmat Sentosa	Unknown Group	25.32	February 17, 2020 - March 16, 2020	Reports 19, 21, 25
PT Rimbun Sawit Papua	Salim/IndoGunta	25.22	February 17, 2020 - March 16, 2020	Reports 3, 10, 13, 14, 16, 17, 18, 20, 23, 25
PT Mulia Inti Perkasa	Widya Corporation Group	23.45	February 17, 2020 - March 16, 2020	Reports 6, 15, 16, 20, 21, 22, 23, 24, 25
PT Marita Makmur Jaya	Unknown Group	22.52	February 17, 2020 - March 16, 2020	Reports 12, 15, 17, 19, 22, 24
PT Katingan Hijau Lestari	Unknown Group	21.76	February 17, 2020 - March 16, 2020	Reports 17, 19, 23
PT Barito Riau Jaya	Unknown Group	19.29	February 17, 2020 - March 16, 2020	Reports 22 and 23
PT Agrindo Sukses Sejahtera	Starmas Sentosa Mandiri	18.26	February 17, 2020 - March 16, 2020	Reports 8, 16, 22

*Rapid Response reports available on Mighty Earth's Rapid Response website page, [linked here](#).

Repeat Cases

Concession license area	Group/ownership	Area covered by screened GLAD alerts (ha)	Time period	Rapid Response reports related to each case*
PT Citrapermata Serundung	Unknown Group	18.12	February 17, 2020 - March 16, 2020	Reports 20 and 23
PT Karya Dewi Putra	Agrosubur Group	16.88	February 17, 2020 - March 16, 2020	Report 24
PT Krida Dharma Kahuripan	Unknown Group (former Makin Group)	15.87	February 17, 2020 - March 16, 2020	Reports 5, 6, 11, 12, 16, 17, 19, 22, 23
PT Kusuma Alam Sari	Alas Kusuma	14.87	February 17, 2020 - March 16, 2020	Reports 7, 17, 23
PT Sabhantara Rawi Sentosa	Dhanistha Surya Nusantara	14.25	February 17, 2020 - March 16, 2020	Reports 21 and 23
PT Putra Katingan Pratama	Kirana Megatara	13.55	February 17, 2020 - March 16, 2020	Reports 17 and 23
PT Olong Jaya Raya	Unknown Group	11.69	February 17, 2020 - March 16, 2020	Report 21
PT Karya Dewi Putra	Agrosubur Group	10.53	February 17, 2020 - March 16, 2020	Report 24
Danum Sinar Sdn Bhd	Puncak Niaga Holdings Bhd	138.48ha	February 17, 2020 - March 16, 2020	Danum Sinar Sdn Bhd
LPF/0006 Samling Lana	Samling Group	92.62ha	February 17, 2020 - March 16, 2020	LPF/0006 Samling Lana
LPF/0007 Samling Jelalong (OP)	Samling Group	72.53ha	February 17, 2020 - March 16, 2020	LPF/0007 Samling Jelalong (OP)

*Rapid Response reports available on Mighty Earth's Rapid Response website page, [linked here](#).

Repeat Cases

Concession license area	Group/ownership	Area covered by screened GLAD alerts (ha)	Time period	Rapid Response reports related to each case*
Trans Kenyaland Sdn Bhd	Tradewinds Plantation Bhd	39.33ha	February 17, 2020 - March 16, 2020	Trans Kenyaland Sdn Bhd
Telliana Enterprise Sdn Bhd	Unknown Group	32.37ha	February 17, 2020 - March 16, 2020	Telliana Enterprise Sdn Bhd
Titanium Management Sdn Bhd (Part 1)	Unknown Group	28.58ha	February 17, 2020 - March 16, 2020	Titanium Management Sdn Bhd (Part 1)
Dataran Linau OP (SY) (Lot 1 Block 14 Murum LD)	Shin Yang Group	23.75ha	February 17, 2020 - March 16, 2020	Dataran Linau OP (SY) (Lot 1 Block 14 Murum LD)
LPF/0018 Shin Yang OP Planting Area	Shin Yang Group	23.36ha	February 17, 2020 - March 16, 2020	LPF/0018 Shin Yang OP Planting Area
Linau Sinar Sdn Bhd	Shin Yang Group	21.51ha	February 17, 2020 - March 16, 2020	Linau Sinar Sdn Bhd
Mutiara Pelita Genaan Plantation Sdn Bhd	Double Dynasty Holdings Sdn Bhd	20.11ha	February 17, 2020 - March 16, 2020	Mutiara Pelita Genaan Plantation Sdn Bhd
LPF/0007 Samling Jelalong (Part 3)	Samling Group	19.95ha	February 17, 2020 - March 16, 2020	LPF/0007 Samling Jelalong (Part 3)
Formerly Ekran Plantation	Unknown Group	13.22ha	February 17, 2020 - March 16, 2020	Formerly Ekran Plantation
LPF/0007 Samling Jelalong (Part 1)	Samling Group	10.75ha	February 17, 2020 - March 16, 2020	LPF/0007 Samling Jelalong (Part 1)
Poh Zhen Sdn Bhd	Rimbunan Hijau Group	8.43ha	February 17, 2020 - March 16, 2020	Poh Zhen Sdn Bhd
Woodijaya Sdn Bhd (Lot 197)	Rimbunan Hijau Group	6.41ha	February 17, 2020 - March 16, 2020	Report 18

*Rapid Response reports available on Mighty Earth's Rapid Response website page, [linked here](#).

Repeat Cases

Concession license area	Group/ownership	Area covered by screened GLAD alerts (ha)	Time period	Rapid Response reports related to each case*
Kwantas Pelita Plantation (Balingian) Sdn Bhd	Kwantas Corporation Bhd	2.94ha	February 17, 2020 - March 16, 2020	Reports 14, 17, 20
Almabumi Plantation Sdn Bhd	BBC Holdings Sdn Bhd	8.43ha	February 17, 2020 - March 16, 2020	Report 21
LPF/0038 Limba Jaya Timber Sdn Bhd (Part 2)	Lee Ling Timber Sdn Bhd	16.45ha	February 17, 2020 - March 16, 2020	Reports 18 and 21
Limba Jaya Timber Sdn Bhd (Limbang)	Lee Ling Timber Sdn Bhd	15.75ha	February 17, 2020 - March 16, 2020	Reports 18 and 21

The work of Mighty Earth is supported by Waxman Strategies. Waxman Strategies' work on forest conservation is funded in part by Aidenvironment. Waxman is required under 22 U.S.C. § 614 to disclose that this material is distributed on behalf of the aforementioned organization, working under grant from the Norwegian Agency for Development Cooperation. Additional information is on file with the Department of Justice, Washington, D.C.