



MIGHTY EARTH



# RAPID RESPONSE Palm Oil Report

Report 25

March 2020



Prepared with

**MapHubs**  
**Waxman**

# Table of Contents

## Cases identified using Planet imagery

### Indonesian Companies

#### *New Case*

Capitol Group: PT Medcopapua Hijau Selaras	4
--	---

#### *Unresolved Cases*

Anglo-Eastern Plantations: PT Kahayan Agro Lestari	8
Mulia Sawit Group: PT Persada Era Agro Kencana	12
Widya Corporation: PT Mulia Inti Perkasa	16

### Malaysian Companies

#### *Unresolved Case*

Shin Yang: Linau Mewah Group Sdn Bhd (Linau Sinar Oil Palm Estate)	21
--	----

## Additional cases identified using filtered GLAD alerts

### New Cases

Medco: PT Energi Mitra Merauke	25
KTS: Wawasan Sedar Sdn Bhd	25

### Repeat Cases

Salim/IndoGunta: PT Rimbun Sawit Papua	26
Salim/IndoGunta: PT Rimbun Sawit Papua	26
Cilandry Anky Abadi Group: PT Citra Agro Abadi	26
Salim/IndoGunta: PT Rimbun Sawit Papua	26
HSA Group: PT Megakarya Jaya Raya	26
Henan Jiujiu Chemical Co Ltd: PT Palem Segar Lestari	26
Shanghai Xinjiu Chemical Co Ltd: PT Sebaung Sawit Plantation (Smallholder)	26
NPC Resources Bhd: PT Sumber Alam Selaras	26
Henan Jiujiu Chemical Co Ltd: PT Palem Segar Lestari	26
Indounsa Group: PT Internusa Jaya Sejahtera	26
Unknown Group: PT Gapura Alas Lestari	26
Shanghai Xinjiu Chemical Co Ltd: PT Sebaung Sawit Plantation	26
Unknown Group: PT Gapura Alas Lestari	26
Julong Group: PT Sanjung Makmur	27
Unknown Group: PT Cipta Karya Sesayap	27
Green Yield Pte Ltd: PT Tri Investama	27
Fangiono Family: PT Tirta Madu Sawit Jaya	27

# Table of Contents

## Additional cases identified using filtered GLAD alerts (continued)

### Repeat Cases (continued)

Murad Family: PT Kurnia Luwuk Sejati	27
Unknown Group: PT Sumber Rahmat Sentosa	27
Unknown Group: PT Laot Bangko	27
Family ownership – Tuan Junus Sutiono and Tuan Watson Dharma	27
Unknown Group: PT Marita Makmur Jaya	27
Kayu Lapis Indonesia: PT Inti Kebun Sejahtera (Block II)	27
Unknown Group: PT Lestari Subur Indonesia	27
Unknown Group: PT Sumber Sawit Mitrajaya	28
Murad Family: PT Kurnia Luwuk Sejati	28
Puncak Niaga Holdings Bhd: Daum Sinar Sdn Bhd	28
Samling Group: LPF/0007 Samling Jelalong (OP)	28
Samling Group: LPF/0006 Samling Lana	28
Shin Yang Group: Dataran Linau OP (SY) (Lot 1 Block 14 Murum LD)	28
Double Dynasty Holdings Sdn Bhd: Mutiara Pelita Genaan Plantation Sdn Bhd	28
Samling Group: LPF/0007 Samling Jelalong (Part 3)	28
Samling Group: LPF/0008 Marudi & Batu Belah	28
Samling Group: LPF/0007 Samling Jelalong (Part 1)	28
Shin Yang Group / Sarawak Oil Palms Bhd: Shin Yang OP Planting Area (LPF/0018)	28
Unknown Group: Formerly Ekran Plantation	28
Puncak Niaga Holdings Bhd: Danum Sinar Sdn Bhd	28

### Supply chain information:

Supply chain information included in Rapid Response reports is based on the latest public versions of mill disclosures, recent export data and grievance logs. Mighty Earth encourages companies to send updated versions of mill disclosures as soon as they become available and to share any decision to suspend relations with a given group/company listed in those mill disclosures; please send to [rapidresponse@mightyearth.org](mailto:rapidresponse@mightyearth.org).

Mighty Earth is now including biofuel companies in the supply chain tables of Rapid Response reports, as these companies have both direct and indirect trading relationships with groups highlighted in these reports and should be filing grievances on these cases. These biofuel companies are listed in the “Traders and Biofuel Companies” tables.

# New Case

## Group: Capitol Group

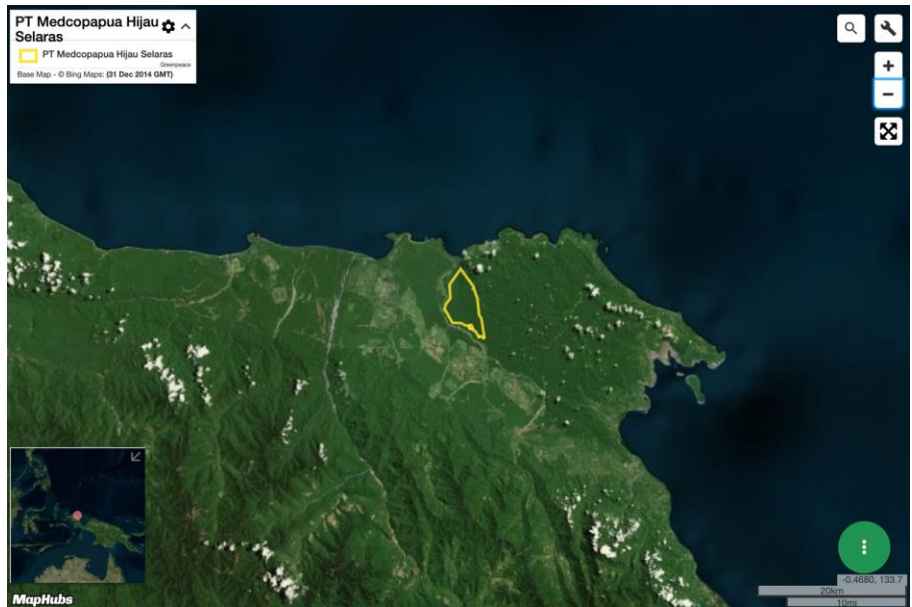
PT Medcopapua Hijau Selaras

Concession location: (-0.828, 133.831)

### Deforestation and/or peat development

Report	Deforestation (ha)	Peat development (ha)	Peat forest development (ha)	Clearance prep/Stacking lines (ha)	Time period
Report 25	221	-	-	397	January 11, 2020 - February 24, 2020

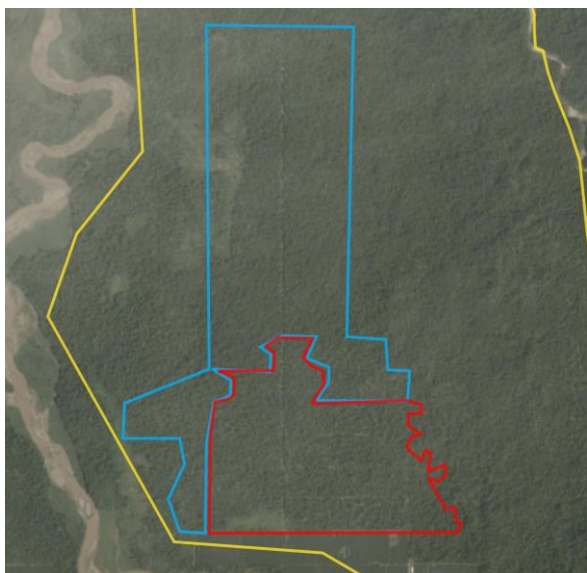
Satellite imagery (see below) shows that between January 11, 2020 and February 24, 2020 a total of 221 hectares of forest were cleared and 397 hectares were prepared for clearance in the PT Medcopapua Hijau Selaras concession. (Imagery © 2020 Planet Labs Inc.)



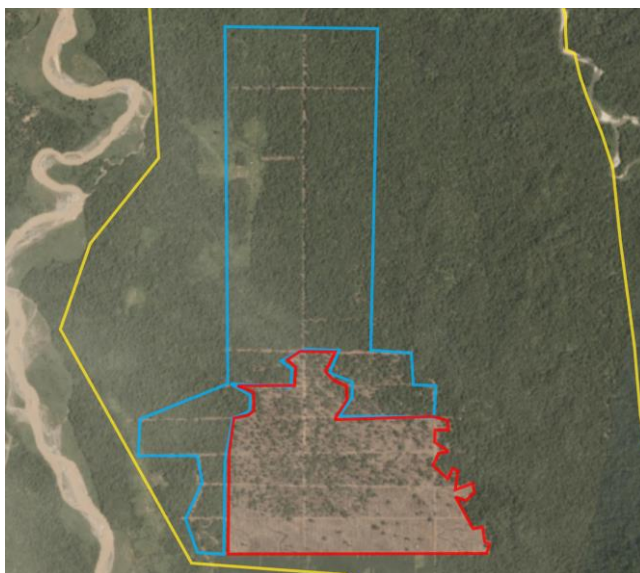
## Alert Imagery (before and after satellite images)

Clearance location: (-0.828, 133.831)

Date: January 11, 2020



Date: February 24, 2020



## Ownership Information

PT Medcopapua Hijau Selaras is now part of the The Capitol Group.<sup>1</sup>

The company is majority owned by PT Yabes Perkebunan Sawit,<sup>2</sup> which is wholly owned by one of the sons and granddaughters of Eka Tjipta Widjaja (deceased), the founder of the Sinar Mas Group: Jimmy Widjaja and Raisa Widjaja respectively. The Sinar Mas Group includes GAR and Asia Pulp & Paper (APP), which both have NDPE policies.

---

1. <http://thecapitolgroups.com>

2. Notary Acts for PT Medcopapua Hijau Selaras and PT Yabes Perkebunan Sawit

## Supply Chain Information

Supply Chain Links: Traders and Biofuel Companies	AAK	ADM	Cargill	KLK	Neste
PT Medcopapua Hijau Selaras	x	x	x	x	x
Capitol Group	x	x	x	x	x

Supply Chain Links: Traders and Biofuel Companies	Olam	Sime Darby	Wilmar
PT Medcopapua Hijau Selaras	x	x	x
Capitol Group	x	x	x

Supply Chain Links: Consumer Brands	Avon	Colgate- Palmolive	FrieslandCampina	General Mills	Hershey
PT Medcopapua Hijau Selaras	x	x	x	x	x
Capitol Group	x	x	x	x	x

Supply Chain Links: Consumer Brands	Johnson & Johnson	Kellogg's	Mars	Mondelez	Nestle
PT Medcopapua Hijau Selaras	x	x	x	x	x
Capitol Group	x	x	x	x	x

## Supply Chain Information (continued)

Supply Chain Links: Consumer Brands	P&G	PepsiCo	PZ Cussons	Reckitt Benckiser	Unilever
PT Medcopapua Hijau Selaras	x	x	x	x	x
Capitol Group	x	x	x	x	x

# Unresolved Case

## Group: Anglo-Eastern Plantations PLC

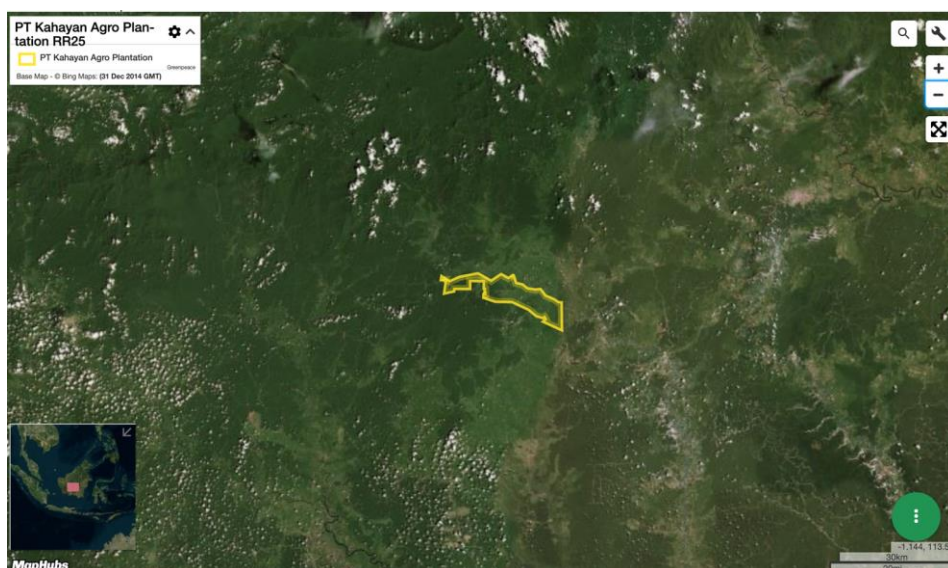
### PT Kahayan Agro Plantation

Concession location: (-0.948, 113.497)

#### Deforestation and/or peat development

Report	Deforestation (ha)	Peat development (ha)	Peat forest development (ha)	Clearance prep/Stacking lines (ha)	Time period
Report 1	420	-	-	-	Dec 2016-Aug 2017
Report 14	189	-	-	-	May 18, 2018-April 1, 2019
Report 15	40	-	-	-	April 1-May 2, 2019
Report 18	19 (via GLAD)	-	-	-	June 15-July 25, 2019
Report 19	22 (via GLAD)	-	-	-	July 15-August 15, 2019
Report 20	27 (via GLAD)	-	-	-	August 15-September 15, 2019
Report 23	37 (via GLAD)	-	-	-	November 15-December 6, 2019
Report 24	11	-	-	-	December 15, 2019 - January 13, 2020
Report 25	9	-	-	-	January 13, 2020 - February 11, 2020

Satellite imagery (see below) shows that between January 13, 2020 and February 11, 2020 a total of 9 hectares of forest were cleared in the PT Kahayan Agro Plantation concession. (Imagery © 2020 Planet Labs Inc.)





## Alert Imagery (before and after satellite images)

Clearance location: (-0.94, 113.367)

Date: January 13, 2020



Date: February 11, 2020



## Ownership Information

PT Kahayan Agro Plantation is part of Anglo-Eastern Plantations PLC.<sup>3</sup>

## Case Notes

The PT Kahayan Agro Plantation case, which was first included in a Rapid Response report in November 2017, remains unresolved as deforestation is still taking place. After its inclusion in our first Rapid Response report, the case was included in reports 14, 15, 18, 19, 20, 23, and 24.

Since the update on this case was included in report 24 in January 2020, this case has been further escalated with traders sourcing from Anglo-Eastern Plantations, including HCSA Plantation Companies, and the HCSA Secretariat.

At the request of the HCSA Secretariat, on 5 February 2020, Mighty Earth joined a call with Anglo-Eastern Plantations, the HCSA Secretariat and the Chair of the HCSA Quality Assurance Working Group. The meeting discussed the outcome of an HCSA Secretariat rapid peer review assessment of the original HCS report (only a review of the disputed area in question). The HCSA Secretariat followed up this meeting with a letter to Anglo-Eastern Plantations, requesting that the company “*confirms in writing that it has issued a stop-work order for the area of concern and will work toward a solution that supports the conservation of this area and an alternative development area for the community.*” We believe most HCSA Plantation Companies now have a copy of the letter from the HCSA Secretariat. A copy of the [letter](#) and rapid [peer review assessment](#) has been published on GAR’s grievance log.

The HCSA Secretariat is now discussing this case on 6 March 2020 with members of the HCSA Executive Committee, which includes Wilmar, GAR and Musim Mas (which all source from Anglo-Eastern Plantations), as well as Greenpeace, WWF, Forest Peoples Programme (FPP), Rainforest Action Network (RAN) and others. Mighty Earth has sent a letter to the members of the HCSA Executive Committee on this case for the meeting on 6 March; a copy can be found [here](#).

3. p. 98 Anglo-Eastern Plantations Annual Report (2018), [www.angloeastern.co.uk/~media/Files/A/Anglo-Eastern/reports-and-documents/Anglo-Eastern%20AR2018.pdf](http://www.angloeastern.co.uk/~media/Files/A/Anglo-Eastern/reports-and-documents/Anglo-Eastern%20AR2018.pdf)

## Supply Chain Information

Supply Chain Links: Traders and Biofuel Companies	AAK	ADM	Apical	Bunge	Cargill
PT Kahayan Agro Plantation					
Anglo-Eastern Plantations	x	x	x	x	x

Supply Chain Links: Traders and Biofuel Companies	Fuji Oil	GAR	Itochu	KLK	Musim Mas	Neste
PT Kahayan Agro Plantation						
Anglo-Eastern Plantations	x	x	x	x	x	x

Supply Chain Links: Traders and Biofuel Companies	Olam	Pacific Inter-Link (via AAA, Indopalm, and ICOF)	Sime Darby	Wilmar
PT Kahayan Agro Plantation				
Anglo-Eastern Plantations	x	x	x	x

Supply Chain Links: Consumer Brands	Avon	Colgate-Palmolive	FrieslandCampina	General Mills	Hershey
PT Kahayan Agro Plantation					
Anglo-Eastern Plantations	x	x	x	x	x

## Supply Chain Information (continued)

Supply Chain Links: Consumer Brands	Johnson & Johnson	Kellogg's	Mars	Nestle	P&G
PT Kahayan Agro Plantation					
<b>Anglo-Eastern Plantations</b>	x	x	x	x	x

Supply Chain Links: Consumer Brands	PepsiCo	PZ Cussons	Reckitt Benckiser	Unilever
PT Kahayan Agro Plantation				
<b>Anglo-Eastern Plantations</b>	x	x	x	x

# Unresolved Case

## Group: Mulia Sawit Group

PT Persada Era Agro Kencana

Concession location: (-2.748, 113.266)

### Deforestation and/or peat development

Report	Deforestation (ha)	Peat development (ha)	Peat forest development (ha)	Clearance prep/Stacking lines (ha)	Time period
Report 9	-	-	129	-	August 27, 2018 - September 25, 2018
Report 10	-	383	-	-	August 27, 2018 - October 31, 2018
Report 11	-	200	189	-	September 25, 2018 - December 1, 2018
Report 12	-	-	189	-	December 5, 2018 - January 7, 2019
Report 15	-	419	144	188	March 19, 2019 - May 4, 2019
Report 16	99 (via GLAD)	-	-	-	April 19 2019 - May 18, 2019
Report 17	99 (via GLAD)	-	-	-	May 19, 2019 - June 20, 2019
Report 18	42 (via GLAD)	-	-	-	June 15 2019 - July 15, 2019
Report 19	124 (via GLAD)	-	-	-	July 15, 2019 - August 15-2019
Report 20	-	1958	158	875	June 27, 2019 - September 6, 2019
Report 22	76 (via GLAD)	-	-	-	October 15, 2019 - November 14, 2019
Report 23	64 (via GLAD)	-	-	-	November 15, 2019- December 6, 2019
Report 24	18.03 (via GLAD)	-	-	-	December 15, 2019 - January 15, 2020
Report 25	912	-	-	974	September 6, 2019 - February 11, 2020

Satellite imagery (see below) shows that between September 6, 2019 and February 11, 2020 a total of 912 hectares of forest were cleared and 974 hectares were prepared for clearance in the PT Persada Era Agro Kencana concession. (Imagery © 2020 Planet Labs Inc.)

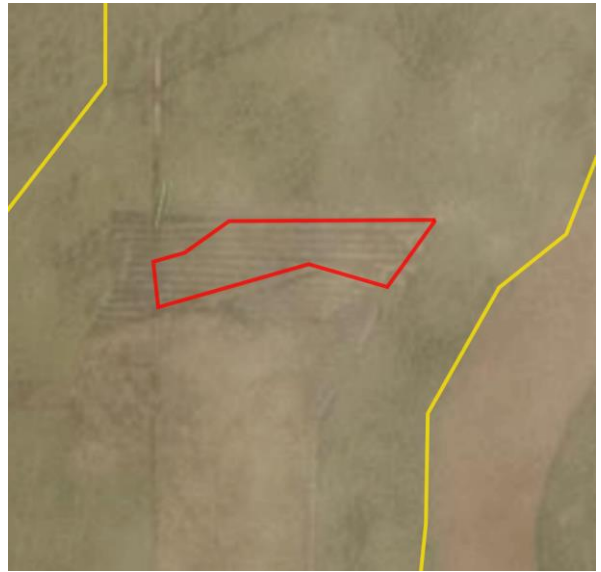


**Alert Imagery (before and after satellite images)**

Clearance location: (-2.777, 113.262)

Date: September 6, 2019

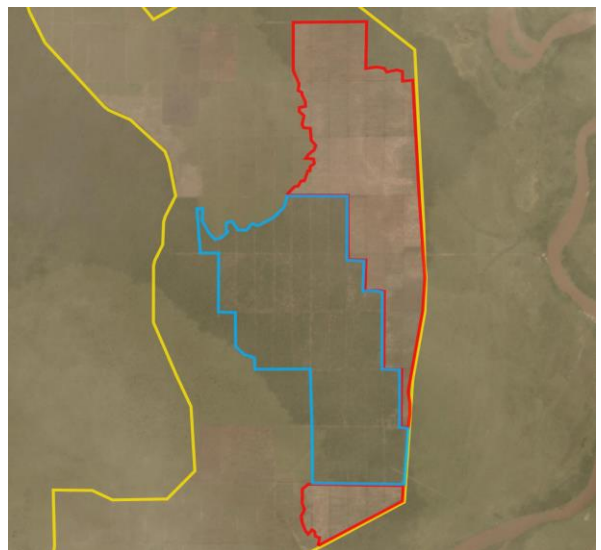
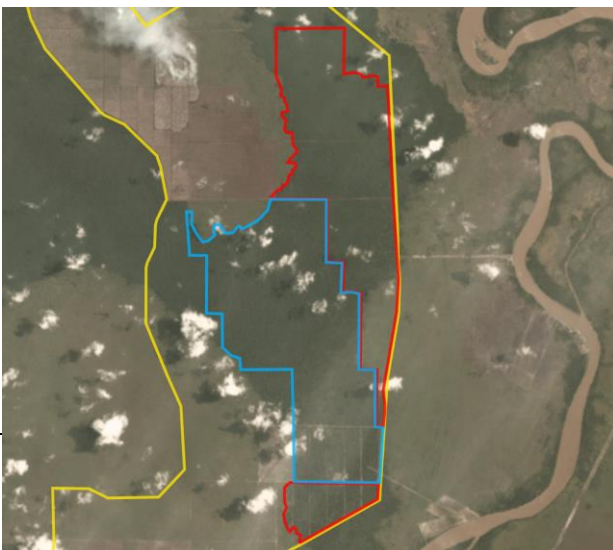
Date: February 11, 2020



Clearance location: (-2.637, 113.313)

Date: September 6, 2019

Date: February 11, 2020



## Ownership Information

PT Persada Era Agro Kencana is part of the Mulia Sawit Group (also known as the MSAL Group).<sup>4</sup>

## Case Notes

The PT Persada Era Agro Kencana case, which was first included in Rapid Response report 9 in October 2018, remains unresolved as deforestation is still taking place. The case was subsequently included in Rapid Response reports 10, 11, 12, 15, 16, 17, 18, 19, 20, 22, 23 and 24.

Based on company grievance logs, ADM, Apical, Bunge, Cargill, Felda IFFCO, and Fuji Oil have subsequently suspended Mulia Sawit from their supply chains.

Itochu, KLK, and Neste have so far failed to suspend Mulia Sawit from their supply chain. We have updated this case in this report and will be escalating this issue with these companies and any consumer good companies that still have Mulia Sawit in their supply chain.

---

4. See [Rapid Response report 20](#) for ownership details

## Supply Chain Information

Supply Chain Links: Traders and Biofuel Companies	Itochu	KLK	Neste
PT Persada Era Agro Kencana			
Mulia Sawit Group	x	x	x

Supply Chain Links: Consumer Brands	Avon	General Mills	Kellogg's	Mondelez
PT Persada Era Agro Kencana				
Mulia Sawit Group	x	x	x	x

Supply Chain Links: Consumer Brands	Nestle	PepsiCo	Unilever
PT Persada Era Agro Kencana			
Mulia Sawit Group	x	x	x

# Unresolved Case

## Group: Widya Corporation

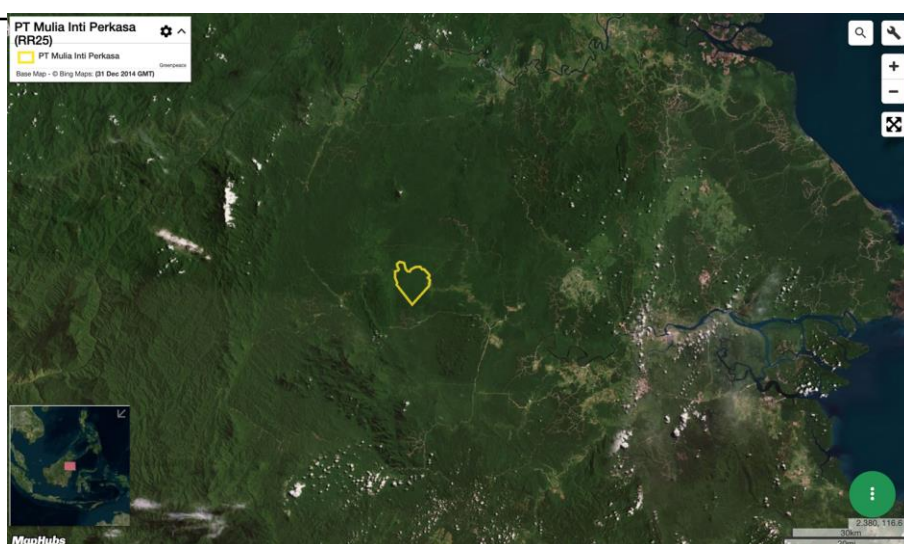
PT Mulia Inti Perkasa

Concession location: (2.295, 116.917)

### Deforestation and/or peat development

Report	Deforestation (ha)	Peat development (ha)	Peat forest development (ha)	Clearance prep/Stacking lines (ha)	Time period
Report 6	30	-	-	-	May 11, 2018 - July 19, 2018
Report 15	119	-	-	46	April 6, 2019 - May 8, 2019
Report 16	119 (via GLAD)	-	-	-	April 19, 2019 - May 18, 2019
Report 20	71 (via GLAD)	-	-	-	August 15, 2019 - September 15, 2019
Report 21	31.26 (via GLAD)	-	-	-	September 16, 2019 - October 15, 2019
Report 22	186 (via GLAD)	-	-	-	October 15, 2019 - November 14, 2019
Report 23	74 (via GLAD)	-	-	-	November 15, 2019 - December 6, 2019
Report 24	151.45 (via GLAD)	-	-	-	December 15, 2019 - January 15, 2020
Report 25	1304	-	-	-	August 13, 2018 - January 21, 2020

Satellite imagery (see below) shows that between August 13, 2018 and January 21, 2020 a total of 1304 hectares of forest were cleared in the PT Mulia Inti Perkasa concession. (Imagery © 2020 Planet Labs Inc.)

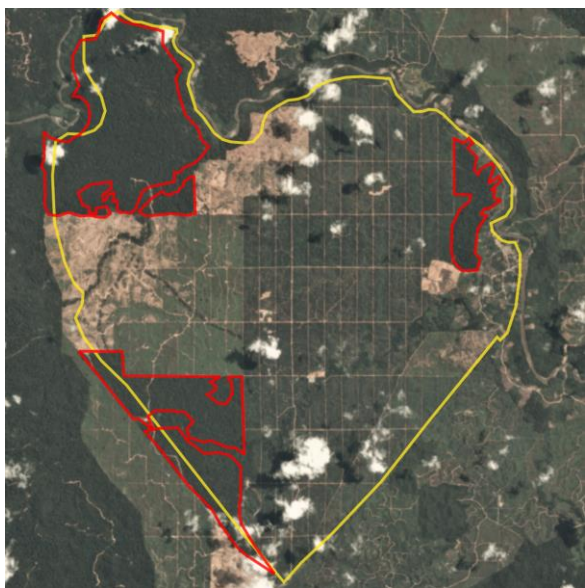




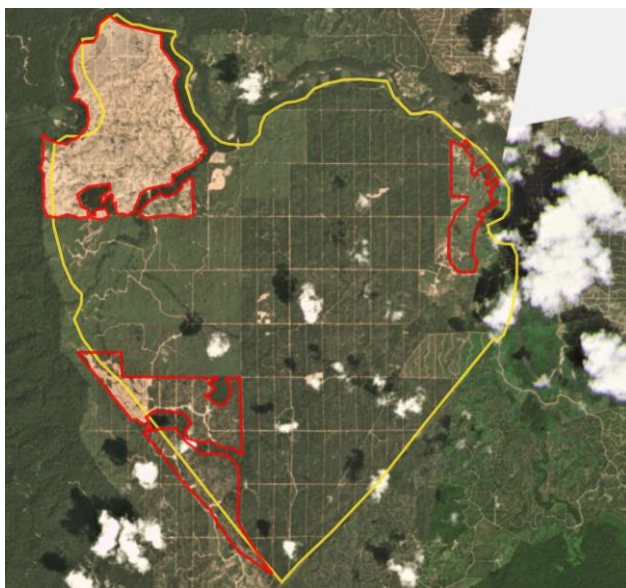
## Alert Imagery (before and after satellite images)

Clearance location: (2.298, 116.889)

Date: August 13, 2018



Date: January 21, 2020



## Ownership Information

PT Mulia Inti Perkasa is part of Widya Corporation.<sup>5</sup>

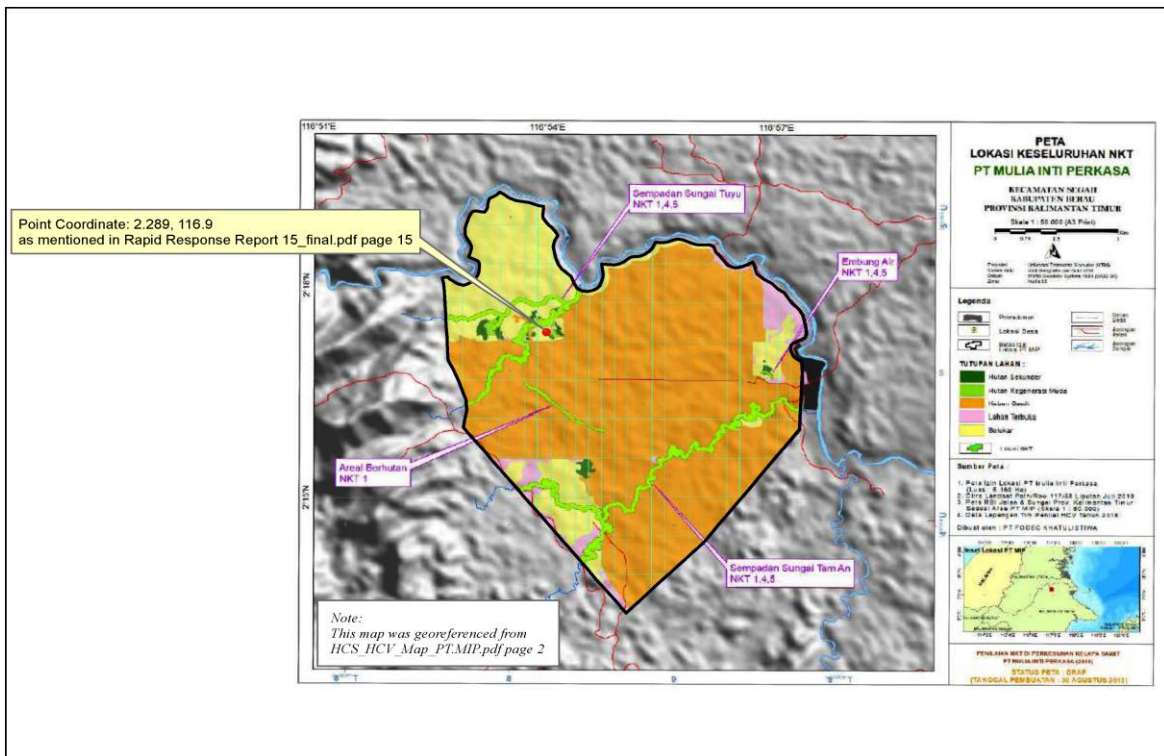
---

5. See [Rapid Response report 6](#) for ownership details.

## Case Notes

The PT Mulia Inti Perkasa case, which was first included in Rapid Response report 6 in July 2018, remains unresolved as deforestation is still taking place. The case was subsequently included in Rapid Response reports 15, 16, 20, 21, 22, 23, and 24.

In response to report 15, published in May 2019, PT Mulia Inti Perkasa claimed that the deforestation highlighted in the report was not in areas identified as HCS forest in the HCSA report, which had not been peer reviewed. The map below from the HCS report shows that most of the areas that hadn't been developed into oil palm plantations were classified as "shrub," i.e. the yellow areas.



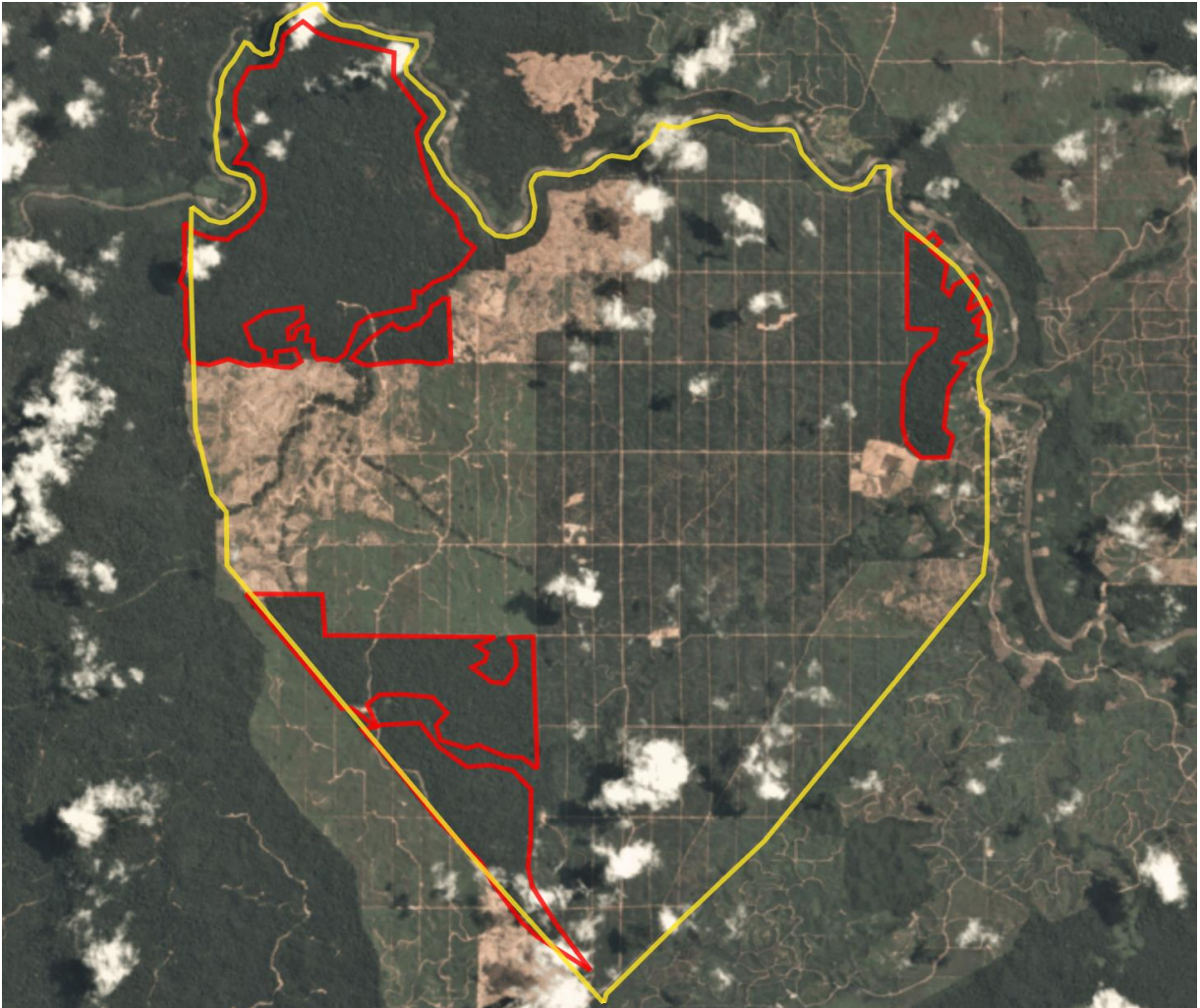
The analysis included in the HCS report report shows that between August 13, 2018 and January 21, 2020 a total of 1,304 hectares were cleared in the PT Mulia Inti Perkasa concession, in areas mostly classified as "shrub." The HCV report dated around September 2018, which Mighty Earth has seen, also shows these areas as "shrub."

However, the Planet image from 13 August 2018, which is one month before the HCS report was completed in September 2018, shows that most of these so-called shrub areas in the map above were forest. See enlarged Planet image below, which shows the location of the 1,304 ha of land that was cleared.

## Case Notes (continued)

Given the above, we are including this evidence in this Rapid Response report as this case needs to be addressed by traders as a further or escalated grievance.

In addition, we are also submitting this evidence to the HCSA Secretariat for further consideration and investigation, as according to a letter Mighty Earth has seen, which is dated 15 January 2020, PT Mulia Inti Perkasa is intending to submit the HCS report for peer review.



## Supply Chain Information

Supply Chain Links: Traders and Biofuel Companies	AAK	Astra Agro Lestari	KLK	Neste	Olam	Sime Darby	Wilmar
PT Mulia Inti Perkasa							
Widya Corporation	x	x	x	x	x	x	x

Supply Chain Links: Consumer Brands	Avon	Colgate-Palmolive	FrieslandCampina	General Mills	Hershey
PT Mulia Inti Perkasa					
Widya Corporation	x	x	x	x	x

Supply Chain Links: Consumer Brands	Johnson & Johnson	Kellogg's	Mars	Mondelez	Nestle
PT Mulia Inti Perkasa					
Widya Corporation	x	x	x	x	x

Supply Chain Links: Consumer Brands	P&G	PepsiCo	PZ Cussons	Reckitt Benckiser	Unilever
PT Mulia Inti Perkasa					
Widya Corporation	x	x	x	x	x

# Unresolved Case

## Group: Shin Yang

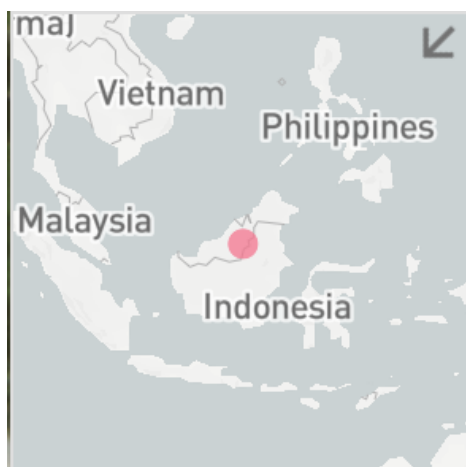
Linau Mewah Group Sdn Bhd (Linau Sinar Oil Palm Estate)

Concession location: (2.623, 114.74)

### Deforestation and/or peat development

Report	Deforestation (ha)	Peat development (ha)	Peat forest development (ha)	Clearance prep/Stacking lines (ha)	Time period
Report 13	-	10	-	-	December 13, 2018 - January 30, 2019
Report 20	23 (via GLAD)	-	-	-	August 15, 2019 - September 15, 2019
Report 21	25.07 (via GLAD)	-	-	-	September 16, 2019 - October 15, 2019
Report 25	9	-	-	137	September 24, 2019 - February 13, 2020

Satellite imagery (see below) shows that between September 24, 2019 and February 13, 2020 a total of 9 hectares of forest were cleared and 137 hectares were prepared for clearance in the Linau Mewah Group Sdn Bhd (Linau Sinar Oil Palm Estate) concession. (Imagery © 2020 Planet Labs Inc.)



**Alert Imagery (before and after satellite images)**

Clearance location: (2.636, 114.784)

Date: September 24, 2019

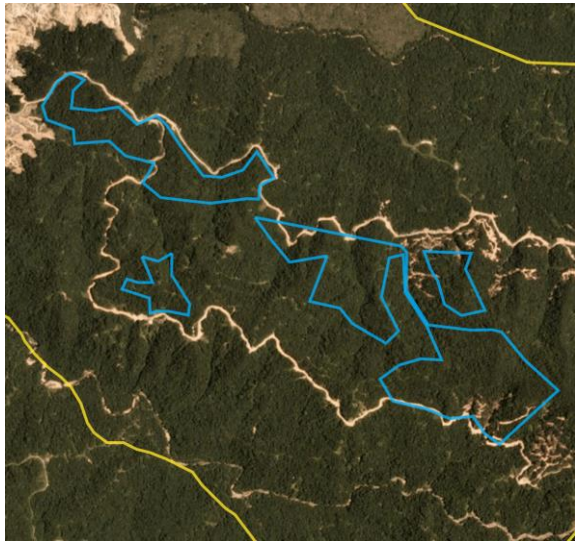


Date: February 13, 2020

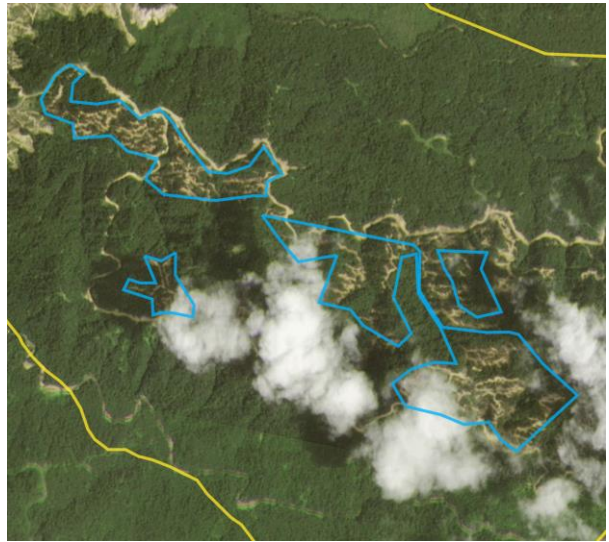


Clearance location: (2.579, 114.727)

Date: September 24, 2019



Date: February 13, 2020



## Ownership Information

Linau Mewah Sdn Bhd (Linau Sinar oil palm estate) is part of the Shin Yang Group,<sup>6</sup> which is a major shareholder (28.51%) in Sarawak Oil Palms Bhd (also part of the Shin Yang Group).<sup>7</sup>

Tan Sri Datuk Ling Chiong Ho is founder of the Shin Yang Group and serves as the Chairman of Shin Yang Holding Sdn Bhd and Sarawak Oil Palms Bhd. Tan Sri Datuk Ling Chiong Ho and his brothers, Ling Chiong Sing, Ling Chiong Pin and Ling Chiong Sieng, are substantial shareholders of Shin Yang Holding Sdn Bhd. Tan Sri Datuk Lin Chiong Ho, Ling Chiong Sing and Lin Lu Kwang (the eldest son of Tan Sri Datuk Lin Chiong Ho) are substantial shareholders of Sarawak Oil Palms Bhd.<sup>8</sup>

Shin Yang is a supplier to Sarawak Oil Palms (SOP).

## Supply Chain Information

Supply Chain Links: Traders and Biofuel Companies	AAK	KLK	Louis Dreyfus	Mewah	Sime Darby
Linau Mewah Group Sdn Bhd (Linau Sinar Oil Palm Estate)					
<b>Shin Yang</b>	x	x	x	x	x

Supply Chain Links: Consumer Brands	Avon	Colgate-Palmolive	FrieslandCampina	General Mills	Hershey
Linau Mewah Group Sdn Bhd (Linau Sinar Oil Palm Estate)					
<b>Shin Yang</b>	x	x	x	x	x

6. Shin Yang website: [www.shinyang.com.my/products-services/oil-palm-plantation.html](http://www.shinyang.com.my/products-services/oil-palm-plantation.html); SGS website: [www.sgs.com/en/certified-clients-and-products/fcm/malaysia/-/media/9ff2c9229a294253b64859b3coe53409.ashx](http://www.sgs.com/en/certified-clients-and-products/fcm/malaysia/-/media/9ff2c9229a294253b64859b3coe53409.ashx)

7. Shin Yang Shipping Corporation Bhd circular to shareholders, 31 October 2016 Pg

[http://disclosure.bursamalaysia.com/FileAccess/apbursaweb/download?id=177560&name=EA\\_DS\\_ATTACHMENTS](http://disclosure.bursamalaysia.com/FileAccess/apbursaweb/download?id=177560&name=EA_DS_ATTACHMENTS); Sarawak Oil Palm Bhd Annual Report 2018 p84

8. Sarawak Oil Palms Bhd Annual Report 2018, [www.sop.com.my/wp-content/uploads/2019/05/SOP-AR-2018.pdf](http://www.sop.com.my/wp-content/uploads/2019/05/SOP-AR-2018.pdf)

## Supply Chain Information (continued)

Supply Chain Links: Consumer Brands	Johnson & Johnson	Kellogg's	Mars	Nestle	P&G
Linau Mewah Group Sdn Bhd (Linau Sinar Oil Palm Estate)					
<b>Shin Yang</b>	x	x	x	x	x

Supply Chain Links: Consumer Brands	PepsiCo	PZ Cussons	Reckitt Benckiser	Unilever
Linau Mewah Group Sdn Bhd (Linau Sinar Oil Palm Estate)				
<b>Shin Yang</b>	x	x	x	x



## Additional cases identified using screened GLAD alerts

The following cases have been identified through screened GLAD alerts (see methodology below). As these cases are either repeat cases from previous Rapid Response reports or where Mighty Earth did not determine any supply chain links for these concessions/groups, no Planet image analysis was conducted for these cases to save resources.

**Mighty Earth expects that palm oil traders and biofuel companies conduct their own due diligence to determine if they are exposed to such companies/Groups. Further, traders and biofuel companies without supply chain links to these cases should put them on their ‘no buy’ lists.**

### Methodology:

For Indonesia, GLAD alerts are screened using the Indonesia Ministry of Forestry and the Environment land cover dataset for 2017 which classifies existing palm oil plantations and primary and secondary forest. Hence, only GLAD alerts in primary and secondary forest according to that dataset are included.

For Malaysia, GLAD alerts are screened to exclude known plantation areas using the Global Forest Watch (GFW) plantations dataset. This automatically eliminates the most common false positives, i.e. the replanting of palm that existed prior to the year 2000.

New Cases				
Concession/ license area	Group ownership	Area covered by screened GLAD alerts	Time period	Supply chain connection identified
PT Energi Mitra Merauke	Medco	10.74ha	January 15-February 17, 2020	None
Wawasan Sedar Sdn Bhd	KTS	8.81ha	January 15-February 17, 2020	None

## Repeat Cases

Concession license area	Group/ownership	Area covered by screened GLAD alerts	Time period	Rapid Response reports related to each case*
PT Rimbun Sawit Papua	Salim/IndoGunta	296.49ha	January 15-February 17, 2020	Reports 3, 10, 13, 14, 16, 17, 18, 20, 23
PT Rimbun Sawit Papua	Salim/IndoGunta	130.88ha	January 15-February 17, 2020	Reports 3, 10, 13, 14, 16, 17, 18, 20, 23
PT Citra Agro Abadi	Cilandry Anky Abadi Group	103.96ha	January 15-February 17, 2020	Reports 17 and 23
PT Rimbun Sawit Papua	Salim/IndoGunta	98.39ha	January 15-February 17, 2020	Reports 3, 10, 13, 14, 16, 17, 18, 20, 23
PT Megakarya Jaya Raya	HSA Group	89.74ha	January 15-February 17, 2020	Reports 5 and 23
PT Palem Segar Lestari	Henan Jiujiu Chemical Co Ltd	82.92ha	January 15-February 17, 2020	Reports 5, 7, 12, 16, 18, 20, 21, 22, 23
PT Sebaung Sawit Plantation (Smallholder)	Shanghai Xinjiu Chemical Co Ltd	80.13ha	January 15-February 17, 2020	Reports 8, 12, 13, 16, 20, 21, 22, 23
PT Sumber Alam Selaras	NPC Resources Bhd	66.68ha	January 15-February 17, 2020	Report 23
PT Palem Segar Lestari	Henan Jiujiu Chemical Co Ltd	38.79ha	January 15-February 17, 2020	Reports 5, 7, 12, 16, 18, 20, 21, 22, 23
PT Internusa Jaya Sejahtera	Indonusa Group	38.55ha	January 15-February 17, 2020	Reports 7, 10, 11, 12, 15, 16, 17, 20, 22, 23
PT Gapura Alas Lestari	Unknown Group	34.70ha	January 15-February 17, 2020	Reports 16, 19, 20, 23
PT Sebaung Sawit Plantation	Shanghai Xinjiu Chemical Co Ltd	27.12ha	January 15-February 17, 2020	Reports 8, 12, 13, 16, 20, 21, 22, 23
PT Gapura Alas Lestari	Unknown Group	23.62ha	January 15-February 17, 2020	Reports 16, 19, 20, 23

\*Rapid Response reports available on Mighty Earth's Rapid Response website page, [linked here](#).

## Repeat Cases

Concession license area	Group/ownership	Area covered by screened GLAD alerts	Time period	Rapid Response reports related to each case*
PT Sanjung Makmur	Julong Group	22.11ha	January 15-February 17, 2020	Report 23
PT Cipta Karya Sesayap	Unknown Group	21.64ha	January 15-February 17, 2020	Reports 17, 22, 23
PT Tri Investama	Green Yield Pte Ltd	19.44ha	January 15-February 17, 2020	Reports 20, 21, 22, 23, 24
PT Tirta Madu Sawit Jaya	Fangiono Family	19.24ha	January 15-February 17, 2020	Reports 22 and 24
PT Kurnia Luwuk Sejati	Murad family	18.66ha	January 15-February 17, 2020	Report 23
PT Sumber Rahmat Sentosa	Unknown Group	17.19ha	January 15-February 17, 2020	Reports 19 and 21
PT Laot Bangko	Unknown Group	16.86ha	January 15-February 17, 2020	Reports 16, 17, 23, 24
PT Subur Karunia Raya	Family ownership - Tuan Junus Sutiono and Tuan Watson Dharma	13.70ha	January 15-February 17, 2020	Reports 6, 9, 16
PT Marita Makmur Jaya	Unknown Group	12.85ha	January 15-February 17, 2020	Reports 12, 15, 17, 19, 22, 24
PT Inti Kebun Sejahtera (Block II)	Kayu Lapis Indonesia	12.16ha	January 15-February 17, 2020	Report 23
PT Lestari Subur Indonesia	Unknown Group	11.20ha	January 15-February 17, 2020	Reports 20 and 22

\*Rapid Response reports available on Mighty Earth's Rapid Response website page, [linked here](#).

## Repeat Cases

Concession license area	Group/ownership	Area covered by screened GLAD alerts	Time period	Rapid Response reports related to each case*
PT Sumber Sawit Mitrajaya	Unknown Group	10.84ha	January 15-February 17, 2020	Reports 15, 17, 23
Danum Sinar Sdn Bhd	Puncak Niaga Holdings Bhd	85.87ha	January 15-February 17, 2020	Reports 14, 15, 16, 19, 20, 21, 23, 24
LPF/0007 Samling Jelalong (OP)	Samling Group	68.58ha	January 15-February 17, 2020	Reports 18, 19, 20, 21, 23, 24
LPF/0006 Samling Lana	Samling Group	54.78ha	January 15-February 17, 2020	Reports 16, 18, 19, 20, 23
Dataran Linau OP (SY) (Lot 1 Block 14 Murum LD)	Shin Yang Group	38.68ha	January 15-February 17, 2020	Reports 17, 18, 19, 20, 21, 23
Mutiara Pelita Genaan Plantation Sdn Bhd	Double Dynasty Holdings Sdn Bhd	24.98ha	January 15-February 17, 2020	Reports 15, 16, 18, 19, 20
LPF/0007 Samling Jelalong (Part 3)	Samling Group	24.36ha	January 15-February 17, 2020	
LPF/0008 Marudi & Batu Belah	Samling Group	17.53ha	January 15-February 17, 2020	Reports 13, 17, 19, 20, 21, 24
LPF/0007 Samling Jelalong (Part 1)	Samling Group	10.21ha	January 15-February 17, 2020	Reports 15, 16, 18, 19, 20, 21, 23
Shin Yang OP Planting Area (LPF/0018)	Shin Yang Group / Sarawak Oil Palms Bhd	7.89ha	January 15-February 17, 2020	Report 18
Formerly Ekran Plantation	Unknown Group	6.88ha	January 15-February 17, 2020	Reports 19, 20, 21, 23
Danum Sinar Sdn Bhd	Puncak Niaga Holdings Bhd	6.42ha	January 15-February 17, 2020	Reports 14, 15, 16, 19, 20, 21, 23, 24

\*Rapid Response reports available on Mighty Earth's Rapid Response website page, [linked here](#).

*The work of Mighty Earth is supported by Waxman Strategies. Waxman Strategies' work on forest conservation is funded in part by Aidenvironment. Waxman is required under 22 U.S.C. § 614 to disclose that this material is distributed on behalf of the aforementioned organization, working under grant from the Norwegian Agency for Development Cooperation. Additional information is on file with the Department of Justice, Washington, D.C.*