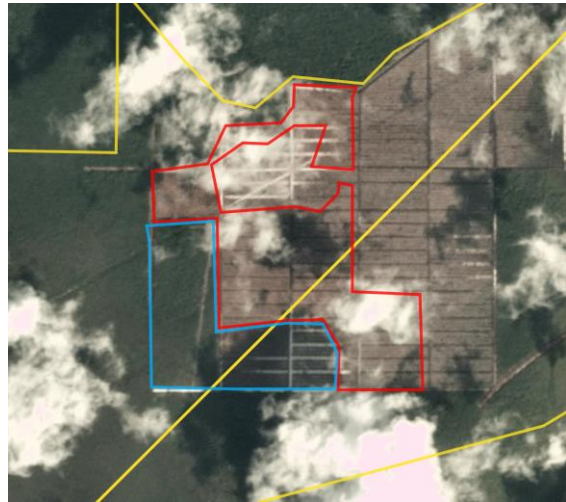
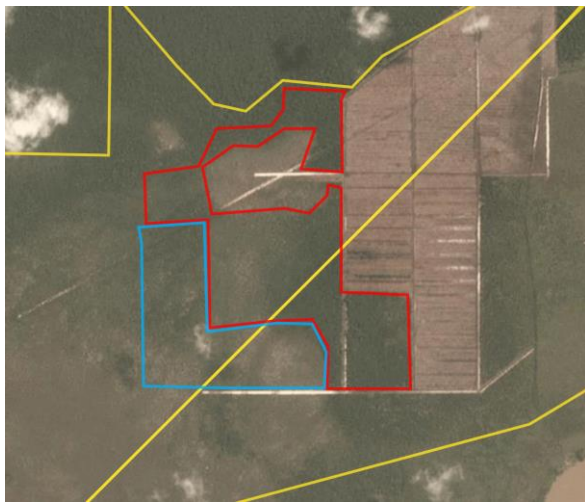


Rapid Response

Palm Oil, Report 23



January 2020

Prepared with support from MapHubs

Table of Contents

Cases identified using Planet imagery

Indonesian Companies

BEST Group: PT Menara Tunggal Perkasa	5
Borneo Pacific Group: PT Arjuna Utama Sawit	8
Bumitama Group: PT Andalan Sukses Makmur	11
Incasi Raya Group: PT Makmur Agro Lestari	14
NPC Resources Bhd: PT Sumber Alam Selaras	17
Puncak Niaga Holdings Bhd: Danum Sinar Sdn Bhd	20
Union Sampoerna Triputra Persada: PT Harapan Hibrida Kalbar	23

Additional cases identified using filtered GLAD alerts

New Cases

Unknown Group: PT Mundam Sijunjung Sakti Plantation	26
Unknown Group: PT Khaleda Prima Mandiri	26
Murad family: PT Kurnia Luwuk Sejati (Morowali Utara)	26
Murad family: PT Kurnia Luwuk Sejati (Banggai)	26
Kayu Lapis Group: PT Inti Kebun Sejahtera (Block II)	26
IMC Plantations: PT Perkebunan Inti Sendawar	26
Julong Group: PT Sanjung Makmur (Bulungan)	26
Julong Group: PT Sanjung Makmur (Tana Tidung)	27

Repeat Cases

Unknown Group: PT Citrapermata Serundung	28
Green Yield Pte Ltd: PT Tri Investama	28
HSA Group: PT Megakarya Jaya Raya	28
Bumitama Group: PT Damai Agro Sejahtera	28
Unknown Group: PT Gapura Alas Lestari	28
Unknown Group: PT Surya Buana Bersama	28
Salim/Indogunta: PT Rimbun Sawit Papua	28
Unknown Group: Koperasi Usaha Mandiri	28
Makin Group: PT Mekar Karya Kahuripan	28
Unknown Group: PT Barito Riau Jaya	28
Unknown Group: PT Triomas Fdi	28

Sources for supply chain information:

Supply chain information included in Rapid Response reports is based on the latest public versions of mill disclosures, recent export data and grievance logs. Mighty Earth encourages companies to send updated versions of mill disclosures as soon as they become available and to share any decision to suspend relations with a given group/company listed in those mill disclosures; please send to rapidresponse@mightyearth.org.

Table of Contents (cont.)

Additional Cases Identified Using Filtered GLAD Alerts

Repeat Cases (continued)

Indonusa Group: PT Internusa Jaya Sejahtera	28
Widya Corporation: PT Mulia Inti Perkasa	28
Mulia Sawit Group: PT Persada Era Agro Kencana	29
Dharma Satya Nusantara: PT Putra Utama Lestari	29
Unknown Group: PT Katingan Hijau Lestari	29
Agro Sarimas Group: PT Agro Sarimas Indonesia	29
Unknown Group: Koperasi Bakung Agri	29
Genting Plantations: PT Permata Sawit Mandiri	29
Unknown Group: PT Ichiko Agro Lestari	29
Cilandry Anky Abadi Group: PT Citra Agro Abadi	29
Unknown Group: PT Laot Bangko	29
Anglo-Eastern Plantations: PT Kahayan Agro Plantation	29
Mitra Jaya Group: PT Sumber Sawit Mitrajaya	29
Goodhope: PT Rim Capital	29
Makin Group: PT Krida Dharma Kahurpian	29
Unknown Group: PT Gapura Alas Lestari	30
Unknown Group: PT Tani Subur Makmur	30
Unknown Group: PT Sentosa Kalimantan Jaya	30
Triputra Agro Persada Group: PT Gawi Bahandep Sawit Mekar	30
Unknown Group: PT Cipta Karya Sesayap	30
Felda Global Ventures: PT Citra Niaga Perkasa	30
Makin Group: PT Cipta Karsa Kahuripan	30
Bukit Berlian Plantation Group: PT Ginang Fohu Plantation	30
Dhanistha Surya Nusantara: PT Sabhantara Rawi Sentosa	30
Kalimantan Sawit Kusama: PT Fajar Saudara Lestari	30
Genting Plantations: PT Citra Sawit Cemerlang	30
Unknown Group: PT Kayan Plantation	30
Shanghai Xinjiu Chemical Co Ltd: PT Sebaung Sawit Plantation (Smallholder)	30
Salim/Indogunta: PT Rimbun Sawit Papua	30
Eagle High Plantations Tbk: PT Arrtu Energie Resources	31
Salim/Indogunta: PT Rimbun Sawit Papua	31
Hangzhou Jinjiang Group: PT Putra Sari Lestari	31
Alas Kusuma Group: PT Kusuma Alam Sari	31
Incasi Raya Group: PT Arvenasepakat	31

Table of Contents (cont.)

Additional Cases Identified Using Filtered GLAD Alerts

Repeat Cases (continued)

Dharma Satya Nusantara: PT Putra Utama Lestari	31
TSH Resources Bhd: PT Bulungan Citra Agro Persada	31
Henan Jiujiu Chemical Co Ltd: PT Palem Segar Lestari (Smallholder)	31
Pipit Group: PT Nunukan Bara Sukses	31
CB Industrial Product Holding: PT Jaya Jadi Utama	31
Bumitama Group: PT Damai Agro Sejahtera	31
Kirana Megatara: PT Putra Katingan Pratama	31
Unknown: PT Ruta Jona Lestari	31
Samling Group: LPF/0007 Samling Jelalong (OP)	32
Samling Group: LPF/0007 Jelalong OP (Glenealy) Part 3	32
Samling Group: LPF/0007 Jelalong OP (Glenealy) Part 1	32
Rimbunan Hijau: Rimbunan Sawit Bhd	32
Puncak Niaga Sdn Bhd: Danun Sinar Sdn Bhd	32
Shin Yang: Dataran Linau OP (SY) (Lot 1 Block 14 Murum LD)	32
Unknown Group: Formerly Ekran Plantation	32
TH Plantations Bhd: Hydroflow	32
Yuwang: OT/0351 Empresa (M) SB	32
Samling Group: LPF/0006 Samling Lana	32

Group: BEST Group

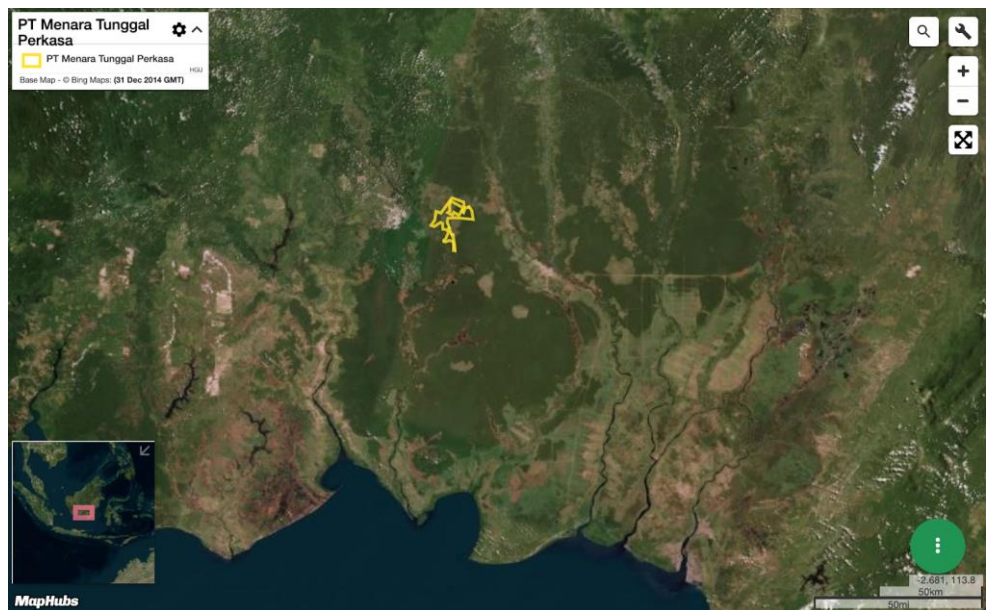
PT Menara Tunggal Perkasa

Concession location: (-1.992, 113.518)

Deforestation and/or peat development

Report	Deforestation (ha)	Peat development (ha)	Peat forest development (ha)	Clearance prep/Stacking lines (ha)	Time period
Report 23	102	-	-	-	August 22– December 24, 2019

Satellite imagery (see below) shows that between August 22, 2019 and December 24, 2019 a total of 102 hectares of forest were cleared in the PT Menara Tunggal Perkasa concession. (Imagery © 2019 Planet Labs Inc.)



Alert Imagery (before and after satellite images)

Clearance location: (-2.103, 113.52)

Date: August 22, 2019



Date: December 24, 2019



Date: August 22, 2019

Clearance location: (-1.957, 113.492)



Date: December 24, 2019



Ownership Information

PT Menara Tunggal Perkasa is part of the BEST Group.¹

1. Notary Act for PT Menara Tunggal Perkasa.

Supply Chain Information

Supply Chain Links: Traders	Felda IFFCO	Louis Dreyfus
PT Menara Tunggal Perkasa		
BEST Group	x	x

Group: Borneo Pacific Group

PT Arjuna Utama Sawit

Concession location: (-2.357, 113.375)

Deforestation and/or peat development

Report	Deforestation (ha)	Peat development (ha)	Peat forest development (ha)	Clearance prep/Stacking lines (ha)	Time period
Report 23	70	-	-	39	September 2 – December 24, 2019

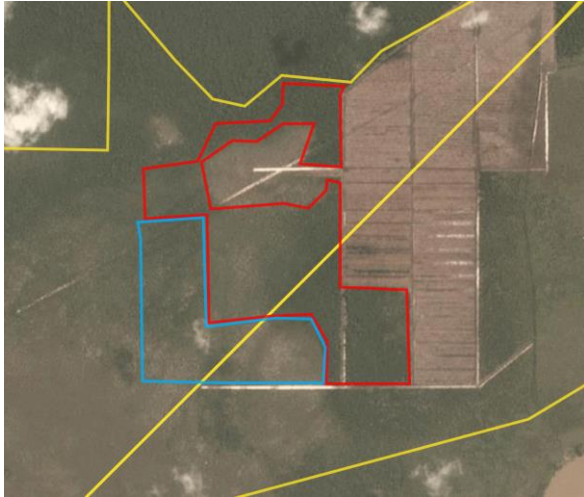
Satellite imagery (see below) shows that between September 2, 2019 and December 24, 2019 a total of 70 hectares of forest were cleared and 39 hectares were prepared for clearance in the PT Arjuna Utama Sawit concession. (Imagery © 2019 Planet Labs Inc.)



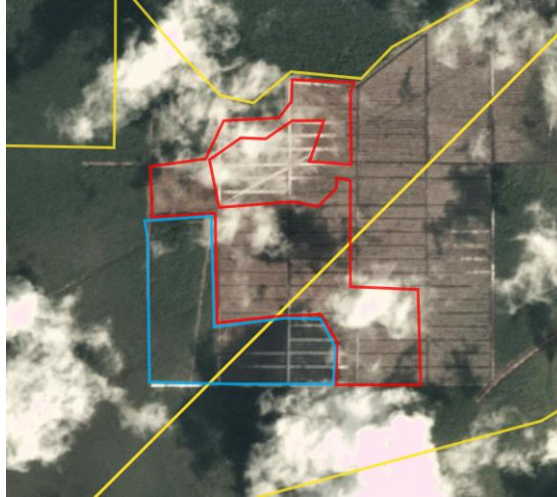
Alert Imagery (before and after satellite images)

Clearance location: (-2.357, 113.375)

Date: September 2, 2019



Date: December 24, 2019



Ownership Information

PT Arjuna Utama Sawit is part of Borneo Pacific Group,² which is controlled by Indonesian businessman Alexander Thaslim.³

Borneo Pacific Group owns PT Arjuna Utama Sawit through Premier Palmoil Energy Pte Ltd (63.3%), which is in turn wholly owned by Tableware Incorporated Pte Ltd, and which is owned by Alexander Thaslim (50%) and Chan Lucille Caroline (50%).⁴

2. Notary Act for PT Arjuna Utama Sawit

3. <https://bit.ly/3crPDz4>

4. Notary Act for PT Arjuna Utama Sawit; Company profiles for Premier Palmoil Energy Pte Ltd and Tableware Incorporated Pte Ltd Notary Act for PT Arjuna 4

Supply Chain Information

Supply Chain Links: Traders	AAK	ADM	Bunge	Fuji Oil	Itochu
PT Arjuna Utama Sawit	x	x		x	x
Borneo Pacific Group	x	x	x	x	x

Supply Chain Links: Traders	Musim Mas	Olam	Sime Darby	Wilmar
PT Arjuna Utama Sawit	x	x	x	x
Borneo Pacific Group	x	x	x	x

Supply Chain Links: Consumer Brands	Avon	Colgate-Palmolive	Friesland Campina	General Mills	Hershey
PT Arjuna Utama Sawit	x	x	x	x	x
Borneo Pacific Group	x	x	x	x	x

Supply Chain Links: Consumer Brands	Johnson & Johnson	Kellogg's	Mars	Mondelez	Neste Oil
PT Arjuna Utama Sawit	x	x	x	x	x
Borneo Pacific Group	x	x	x	x	x

Supply Chain Links: Consumer Brands	Nestle	PepsiCo	PZ Cussons	Reckitt Benckiser	Unilever
PT Arjuna Utama Sawit	x	x	x	x	
Borneo Pacific Group	x	x	x	x	x

Group: Bumitama Group

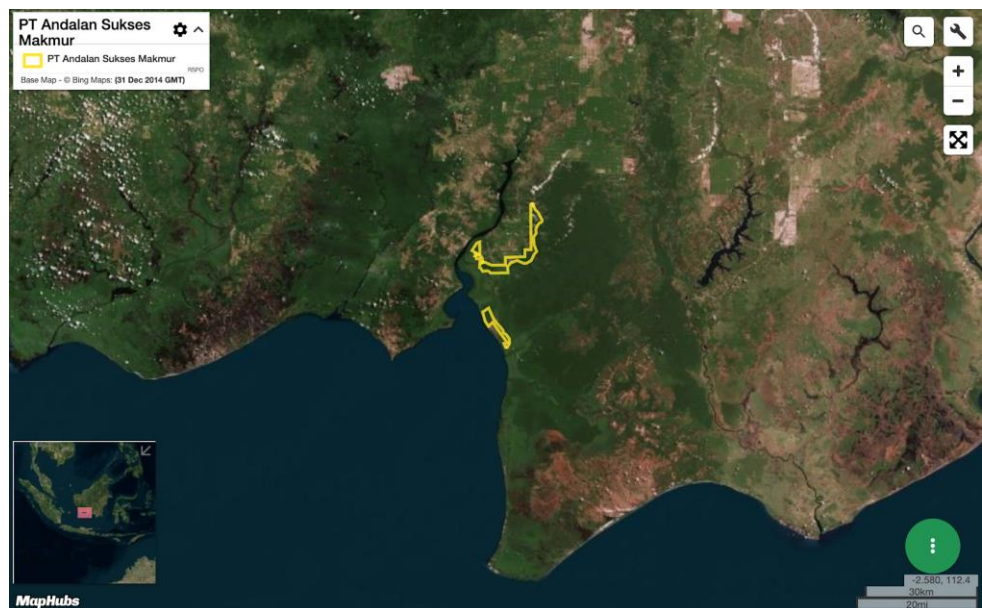
PT Andalan Sukses Makmur

Concession location: (-2.791, 111.824)

Deforestation and/or peat development

Report	Deforestation (ha)	Peat development (ha)	Peat forest development (ha)	Clearance prep/Stacking lines (ha)	Time period
Report 23	129	-	-	-	September 4 – December 24, 2019

Satellite imagery (see below) shows that between September 4, 2019 and December 24, 2019 a total of 129 hectares of forest were cleared in the PT Andalan Sukses Makmur concession. (Imagery © 2019 Planet Labs Inc.)



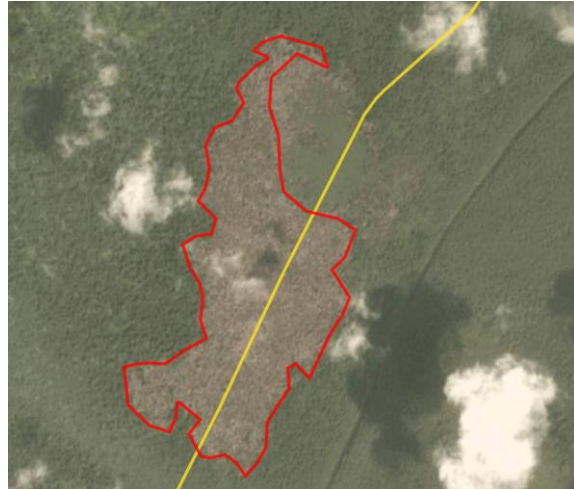
Alert Imagery (before and after satellite images)

Clearance location: (-2.774, 111.881)

Date: September 4, 2019

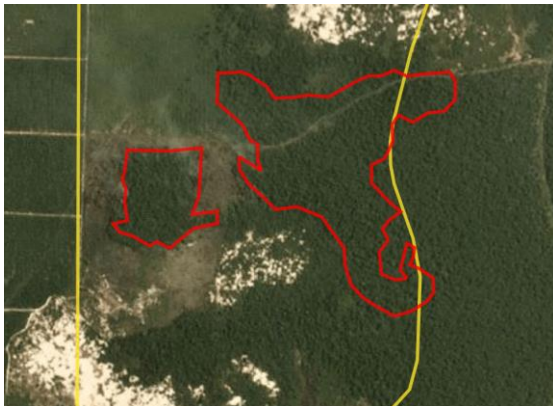


Date: December 24, 2019

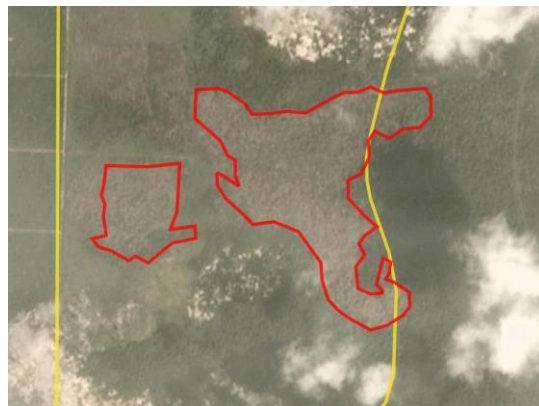


Date: September 4, 2019

Clearance location: (-2.711, 111.888)



Date: December 24, 2019



Ownership Information

PT Andalan Sukses Makmur is part of the Bumitama Group.⁶

6. Bumitama Agri Ltd, 2018 annual report. <http://ir.bumitama-agri.com/static-files/2e0c8a3e-f0fc-4b78-838f-e043b6543237>

Supply Chain Information

Supply Chain Links: Traders	AAK	ADM	Apical	Bunge	Cargill	Fuji Oil	GAR
PT Andalan Sukses Makmur							
Bumitama Group	x	x	x	x	x	x	x

Supply Chain Links: Traders	Itochu	KLK	Musim Mas	Olam	PIL (via ICOF)	Sime Darby	Wilmar
PT Andalan Sukses Makmur							
Bumitama Group	x	x	x	x	x	x	x

Supply Chain Links: Consumer Brands	Avon	Colgate-Palmolive	Friesland Campina	General Mills	Hershey
PT Andalan Sukses Makmur					
Bumitama Group	x	x	x	x	x

Supply Chain Links: Consumer Brands	Johnson & Johnson	Kellogg's	Mars	Mondelez	Neste Oil
PT Andalan Sukses Makmur					
Bumitama Group	x	x	x	x	x

Supply Chain Links: Consumer Brands	Nestle	P&G	PepsiCo	PZ Cussons	Reckitt Benckiser	Unilever
PT Andalan Sukses Makmur						
Bumitama Group	x	x	x	x	x	x

Group: Incasi Raya Group

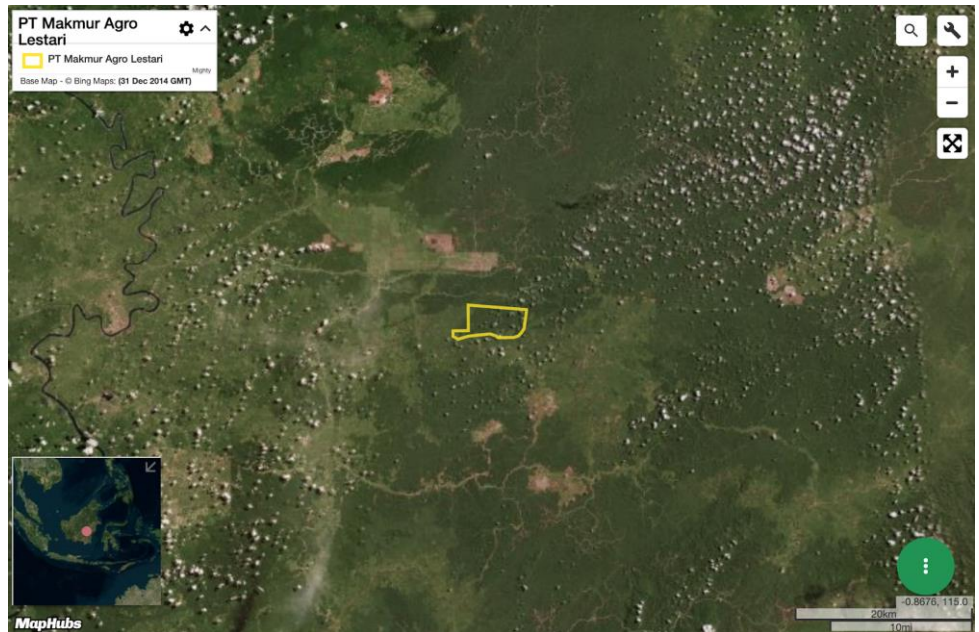
PT Makmur Agro Lestari

Concession location: (-0.964, 115.272)

Deforestation and/or peat development

Report	Deforestation (ha)	Peat development (ha)	Peat forest development (ha)	Clearance prep/Stacking lines (ha)	Time period
Report 23	61	-	-	-	August 30 – December 4, 2019

Satellite imagery (see below) shows that between August 30, 2019 and December 4, 2019 a total of 61 hectares of forest were cleared in the PT Makmur Agro Lestari concession. (Imagery © 2019 Planet Labs Inc.)



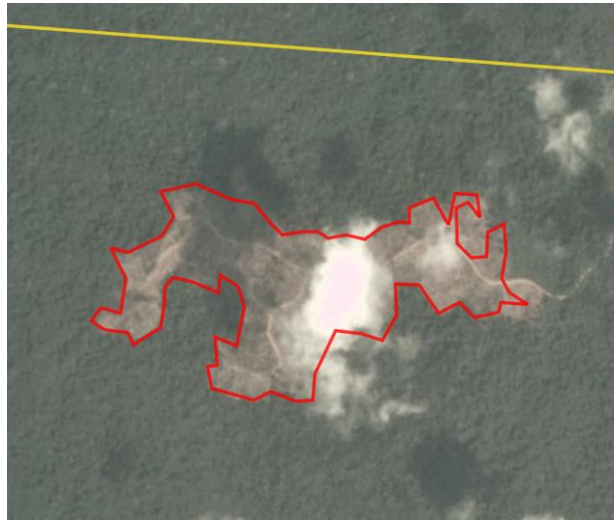
Alert Imagery (before and after satellite images)

Clearance location: (-0.948, 115.276)

Date: August 30, 2019



Date: December 4, 2019



Ownership Information

PT Makmur Agro Lestari is part of the Incasi Raya Group, which is owned by the Gunawan family.⁷

7. Notary Act for PT Makmur Agro Lestari

Supply Chain Information

Supply Chain Links: Traders	AAK	ADM	Cargill	Fuji Oil	Itochu
PT Makmur Agro Lestari					
Incasi Raya Group	x	x	x	x	x

Supply Chain Links: Traders	KLK	Musim Mas	Olam	Sime Darby	Wilmar
PT Makmur Agro Lestari					
Incasi Raya Group	x	x	x	x	x

Supply Chain Links: Consumer Brands	Avon	Colgate-Palmolive	Friesland Campina	General Mills	Hershey
PT Makmur Agro Lestari					
Incasi Raya Group	x	x	x	x	x

Supply Chain Links: Consumer Brands	Johnson & Johnson	Kellogg's	Mars	Mondelez	Neste Oil
PT Makmur Agro Lestari					
Incasi Raya Group	x	x	x	x	x

Supply Chain Links: Consumer Brands	Nestle	P&G	PepsiCo	PZ Cussons	Reckitt Benckiser	Unilever
PT Makmur Agro Lestari						
Incasi Raya Group	x	x	x	x	x	x

Group: NPC Resources Bhd

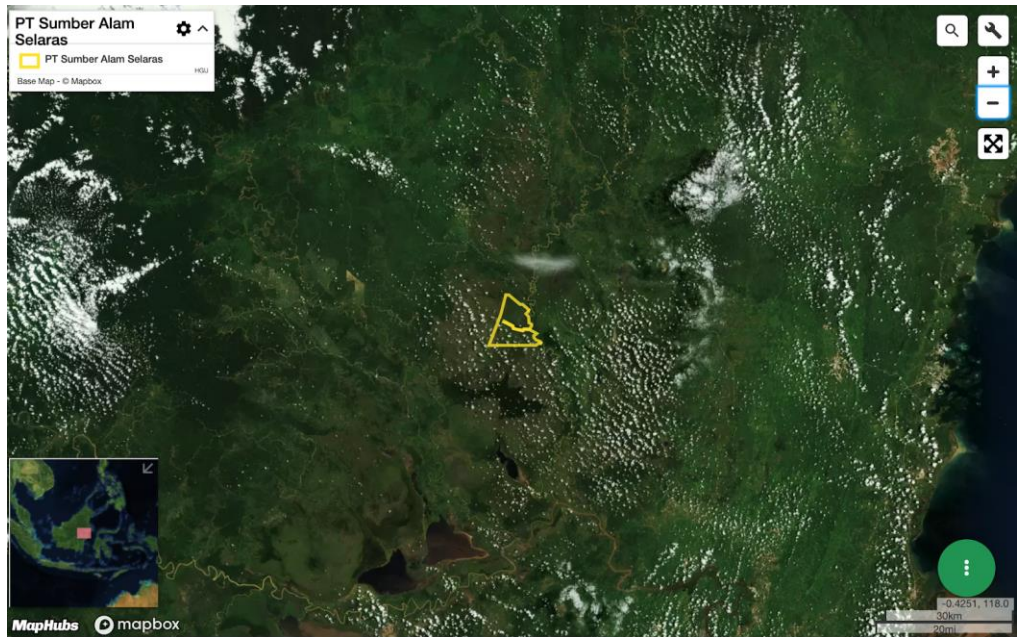
PT Sumber Alam Selaras

Concession location: (0.203, 116.627)

Deforestation and/or peat development

Report	Deforestation (ha)	Peat development (ha)	Peat forest development (ha)	Clearance prep/Stacking lines (ha)	Time period
Report 23	1047	-	-	-	September 2 – November 27, 2019

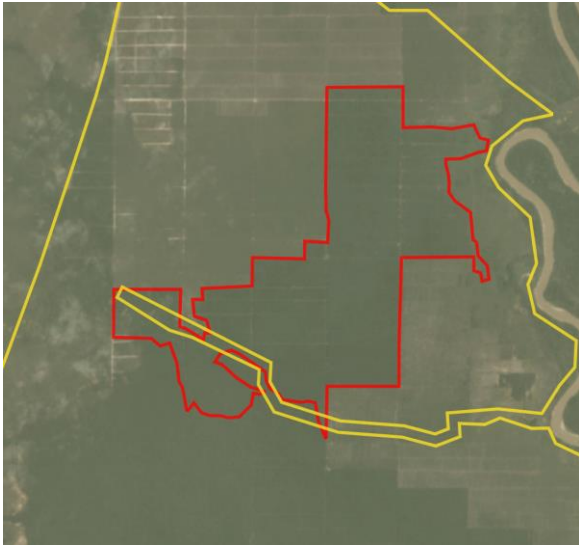
Satellite imagery (see below) shows that between September 2, 2019 and November 27, 2019 a total of 1047 hectares of forest were cleared in the PT Sumber Alam Selaras concession. (Imagery © 2019 Planet Labs Inc.).



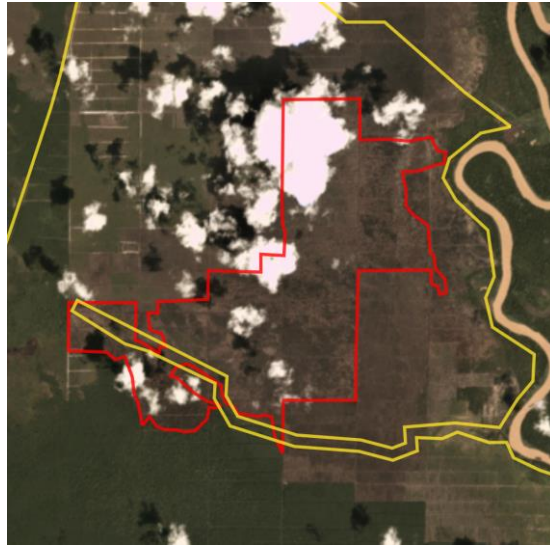
Alert Imagery (before and after satellite images)

Clearance location: (0.233, 116.594)

Date: September 2, 2019



Date: November 27, 2019



Ownership Information

PT Sumber Alam Selaras is part of NPC Resources Bhd.⁸

8. NPC Resources Bhd group structure, December 2018. www.npc.com.my/Group%20Structure_31%2012%202018.pdf

Supply Chain Information

Supply Chain Links: Traders	AAK	ADM	Cargill	Fuji Oil	IOI
PT Sumber Alam Selaras					
NPC Resources	x	x	x	x	x

Supply Chain Links: Traders	Itochu	KLK	Mewah	Olam	Wilmar
PT Sumber Alam Selaras					
NPC Resources	x	x	x	x	x

Supply Chain Links: Consumer Brands	Avon	Colgate-Palmolive	Friesland Campina	General Mills	Hershey
PT Sumber Alam Selaras					
NPC Resources	x	x	x	x	x

Supply Chain Links: Consumer Brands	ISF	Johnson & Johnson	Kellogg's	Louis Dreyfus	Mars
PT Sumber Alam Selaras					
NPC Resources	x	x	x	x	x

Supply Chain Links: Consumer Brands	Neste Oil	P&G	PepsiCo	PZ Cussons	Reckitt Benckiser	Unilever
PT Sumber Alam Selaras						
NPC Resources	x	x	x	x	x	x

Group: Puncak Niaga Holdings Bhd

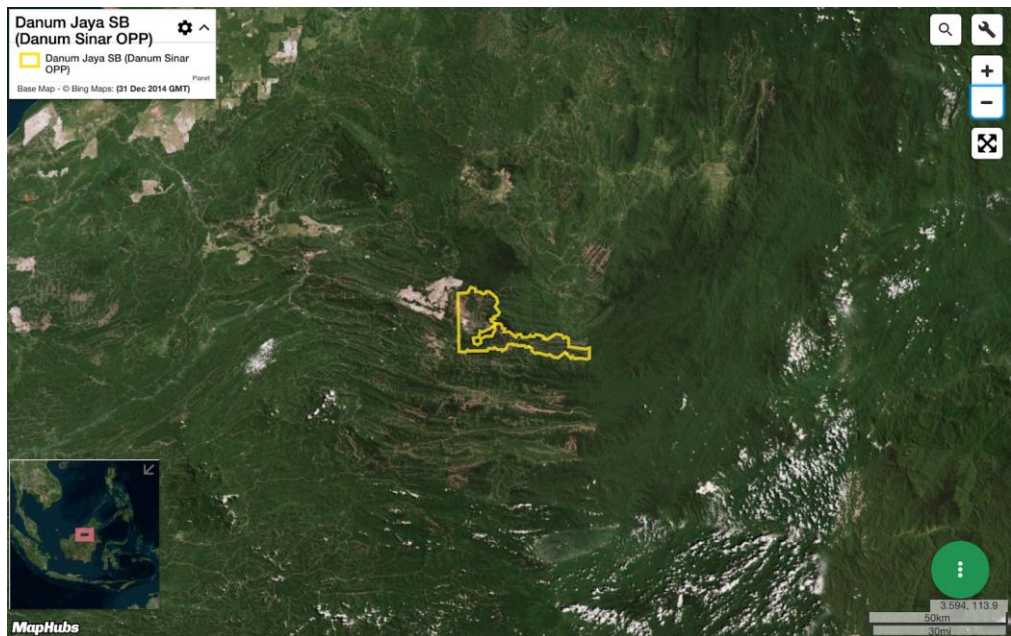
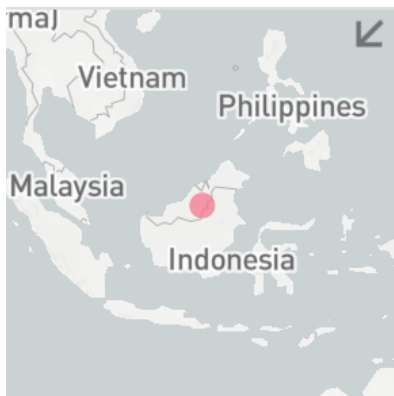
Danum Sinar Sdn Bhd

Concession location: (2.672, 114.758)

Deforestation and/or peat development

Report	Deforestation (ha)	Peat development (ha)	Peat forest development (ha)	Clearance prep/Stacking lines (ha)	Time period
Report 23	283	-	-	720	March 25 – December 25, 2019

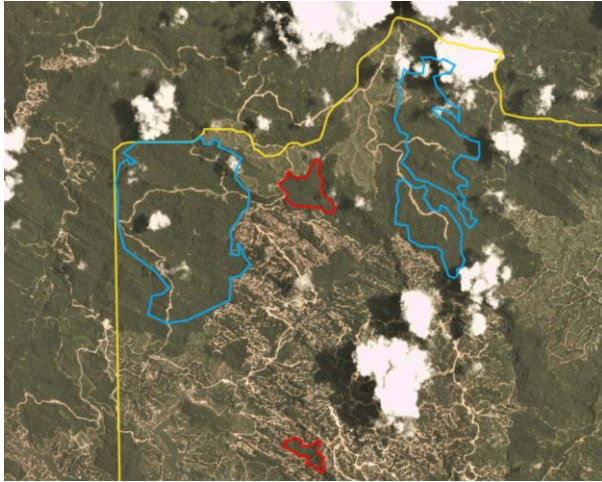
Satellite imagery (see below) shows that between March 25, 2019 and December 25, 2019 a total of 283 hectares of forest were cleared and 720 hectares were prepared for clearance in the Danum Sinar Sdn Bhd concession. (Imagery © 2019 Planet Labs Inc.)



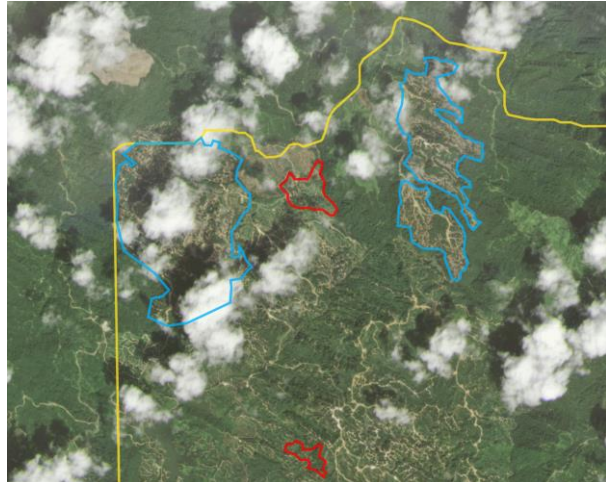
Alert Imagery (before and after satellite images)

Clearance location: (2.814, 114.587)

Date: April 9, 2019

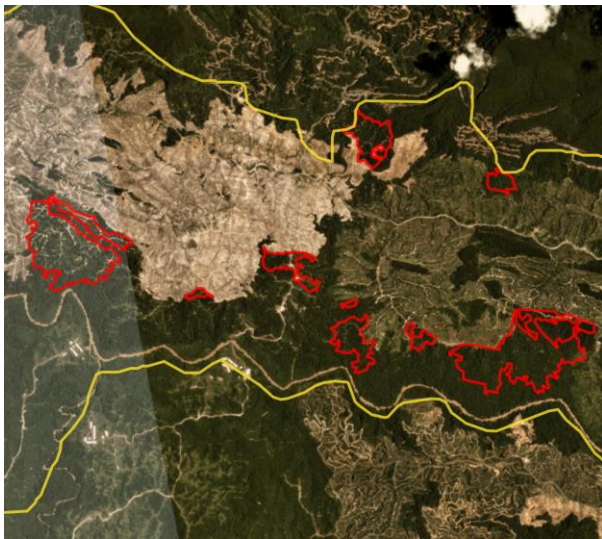


Date: December 25, 2019

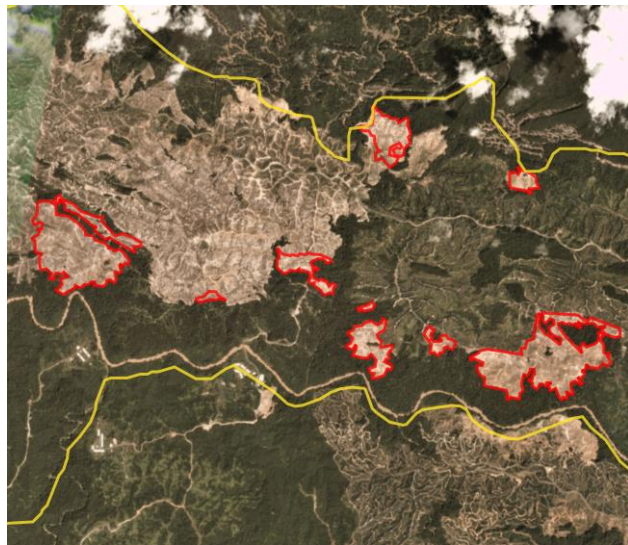


Date: March 25, 2019

Clearance location: (2.668, 114.741)



Date: November 27, 2019



Ownership Information

Danum Sinar Sdn Bhd is part of Puncak Niaga Holdings Bhd (Puncak Niaga Group).⁹

9. Corporate profiles for Danum Sinar Sdn Bhd and its shareholders. Companies Commission Malaysia.

Supply Chain Information

Supply Chain Links: Traders	Sarawak Oil Palms (SOP)
Danum Sinar Sdn Bhd	
Puncak Niaga Holdings Bhd	x

Group: PT Union Sampoerna Triputra Persada

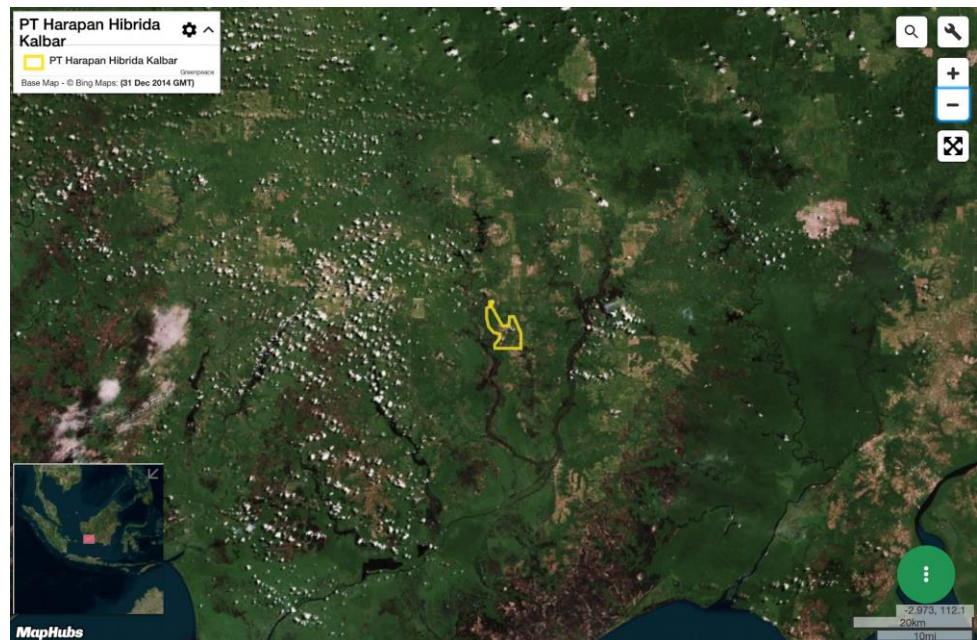
PT Harapan Hibrida Kalbar

Concession location: (-2.504, 111.083)

Deforestation and/or peat development

Report	Deforestation (ha)	Peat development (ha)	Peat forest development (ha)	Clearance prep/Stacking lines (ha)	Time period
Report 23	42	-	-	-	August 6 – December 24, 2019

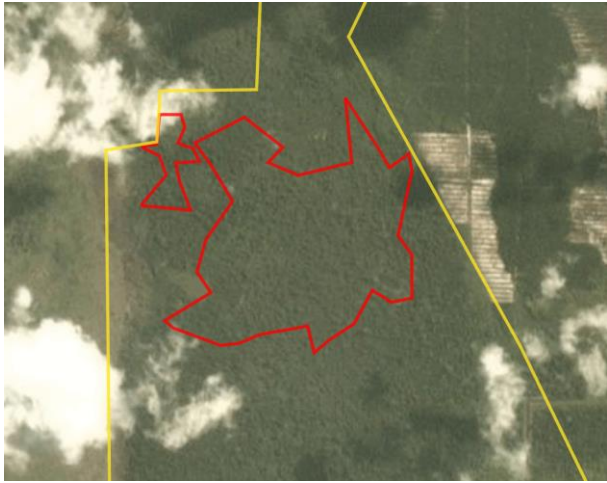
Satellite imagery (see below) shows that between August 6, 2019 and December 24, 2019 a total of 42 hectares of forest were cleared in the PT Harapan Hibrida Kalbar concession. (Imagery © 2019 Planet Labs Inc.)



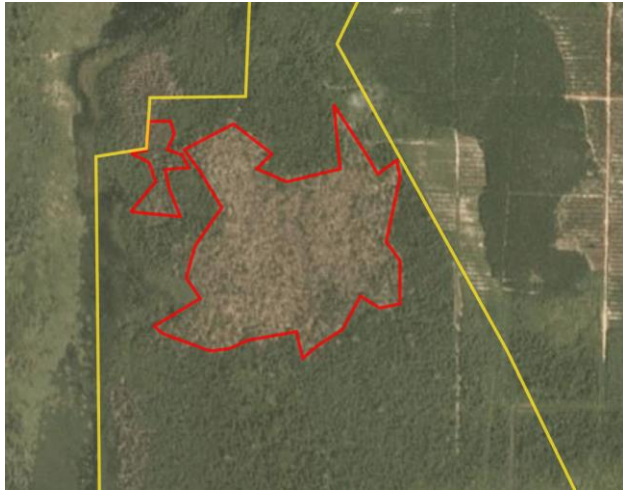
Alert Imagery (before and after satellite images)

Clearance location: (-2.481, 111.071)

Date: August 6, 2019



Date: December 24, 2019



Ownership Information

PT Harapan Hibrida Kalbar is part of PT Union Sampoerna Triputra Persada.¹⁰

11. Notary Act for PT Harapan Hibrida Kalbar.

Supply Chain Information

Supply Chain Links: Traders	AAK	ADM	GAR	KLK	Olam	Sime Darby	Wilmar
PT Harapan Hibrida Kalbar	x	x	x	x	x	x	x
Union Sampoerna Triputra Persada	x	x	x	x	x	x	x

Supply Chain Links: Consumer Brands	Avon	Colgate-Palmolive	Friesland Campina	General Mills	Hershey
PT Harapan Hibrida Kalbar	x	x	x	x	x
Union Sampoerna Triputra Persada	x	x	x	x	x

Supply Chain Links: Consumer Brands	Johnson & Johnson	Kellogg's	Mars	Mondelez	Neste Oil
PT Harapan Hibrida Kalbar	x	x	x	x	x
Union Sampoerna Triputra Persada	x	x	x	x	x

Supply Chain Links: Consumer Brands	Nestle	P&G	PepsiCo	Reckitt Benckiser	Unilever
PT Harapan Hibrida Kalbar	x	x	x	x	x
Union Sampoerna Triputra Persada	x	x	x	x	x

Additional cases identified using screened GLAD alerts

The following cases have been identified through screened GLAD alerts (see methodology below). As these cases are either repeat cases from previous Rapid Response reports or where Mighty Earth did not determine any supply chain links for these concessions/Groups, no Planet image analysis was conducted for these cases to save resources.

Mighty Earth expects that palm oil traders conduct their own due diligence to determine if they are exposed to such companies/Groups. Further, traders without supply chain links to these cases should put them on their 'no buy' lists.

Methodology:

For Indonesia, GLAD alerts are screened using the Indonesia Ministry of Forestry and the Environment land cover dataset for 2017 which classifies existing palm oil plantations and primary and secondary forest. Hence, only GLAD alerts in primary and secondary forest according to that dataset are included.

For Malaysia, GLAD alerts are screened to exclude known plantation areas using the Global Forest Watch (GFW) plantations dataset. This automatically eliminates the most common false positives, i.e. the replanting of palm that existed prior to the year 2000.

New Cases				
Concession/ license area	Group ownership	Area covered by screened GLAD alerts (ha)	Time period	Supply chain connection identified
PT Mundam Sijunjung Sakti Plantation	Unknown Group	~10ha	November 15-December 6, 2019	None
PT Khaleda Prima Mandiri	Unknown Group	~13ha	November 15-December 6, 2019	None
PT Kurnia Luwuk Sejati (Morowali Utara)	Murad family	~14ha	November 15-December 6, 2019	None
PT Kurnia Luwuk Sejati (Banggai)	Murad family	~15ha	November 15-December 6, 2019	None
PT Inti Kebun Sejahtera (Block II)	Kayu Lapis Group	~27ha	November 15-December 6, 2019	None
PT Perkebunan Inti Sendawar	IMC Plantations	~28ha	November 15-December 6, 2019	None
PT Sanjung Makmur (Bulungan)	Julong Group	~16ha	October 15-November 14, 2019	None

New Cases (continued)

Concession/ license area	Group ownership	Area covered by screened GLAD alerts (ha)	Time period	Supply chain connection identified
PT Sanjung Makmur (Tana Tidung)	Julong Group	~44ha	November 15-December 6, 2019	None

Repeat Cases

Concession license area	Group/ownership	Area covered by screened GLAD alerts (ha)	Time period	Rapid Response reports related to each case*
PT Citrapermata Serundung	Unknown	~20ha	November 15-December 6, 2019	Report 20
PT Tri Investama	Green Yield Pte Ltd	~189ha	November 15-December 6, 2019	Reports 20, 21, 22
PT Megakarya Jaya Raya	HSA Group	~162ha	November 15-December 6, 2019	Report 5
PT Damai Agro Sejahtera	Bumitama Group	~136ha	November 15-December 6, 2019	Report 22
PT Gapura Alas Lestari	Unknown	~107ha	November 15-December 6, 2019	Reports 16, 19, 20
PT Surya Buana Bersama	Unknown	~100ha	November 15-December 6, 2019	Report 22
PT Rimbun Sawit Papua	Salim/Indogunta	~97ha	November 15-December 6, 2019	Reports 3, 10, 13, 14, 16, 17, 18, 20
Koperasi Usaha Mandiri	Unknown	~89ha	November 15-December 6, 2019	Reports 17, 19, 20, 21, 22
PT Mekar Karya Kahuripan	Makin Group	~88ha	November 15-December 6, 2019	Reports 17, 21, 22
PT Barito Riau Jaya	Unknown	~87ha	November 15-December 6, 2019	Report 22
PT Triomas Fdi	Unknown	~86ha	November 15-December 6, 2019	Reports 17 and 22
PT Internusa Jaya Sejahtera	Indonusa Group	~82ha	November 15-December 6, 2019	Reports 7, 10, 11, 12, 15, 16, 17, 20, 22
PT Mulia Inti Perkasa	Widya Corporation	~74ha	November 15-December 6, 2019	Reports 6, 15, 16, 20, 21, 22

*Rapid Response reports available on Mighty Earth's Rapid Response website page, [linked here](#).

Repeat Cases (continued)

Concession license area	Group/ownership	Area covered by screened GLAD alerts (ha)	Time period	Rapid Response reports related to each case*
PT Persada Era Agro Kencana	Mulia Sawit Group	~64ha	November 15-December 6, 2019	Reports 9, 10, 11, 12, 15, 16, 17, 18, 19, 20, 22
PT Putra Utama Lestari	Dharma Satya Nusantara	~61ha	November 15-December 6, 2019	Report 20
PT Katingan Hijau Lestari	Unknown	~56ha	November 15-December 6, 2019	Reports 17 and 19
PT Agro Sarimas Indonesia	Agro Sarimas Group	~53ha	November 15-December 6, 2019	Report 22
Koperasi Bakung Agri	Unknown	~51ha	November 15-December 6, 2019	Report 22
PT Permata Sawit Mandiri	Genting Plantations	~50ha	November 15-December 6, 2019	Reports 15, 16, 17, 19, 20
PT Ichiko Agro Lestari	Unknown	~48ha	November 15-December 6, 2019	Reports 14, 16, 17, 19, 20, 21
PT Citra Agro Abadi	Cilandry Anky Abadi Group	~46ha	November 15-December 6, 2019	Report 17
PT Laot Bangko	Unknown	~44ha	November 15-December 6, 2019	Reports 16 and 17
PT Kahayan Agro Plantation	Anglo-Eastern Plantations	~37ha	November 15-December 6, 2019	Reports 1, 14, 15, 18, 19, 20
PT Sumber Sawit Mitrajaya	Mitra Jaya Group	32ha	November 15-December 6, 2019	Reports 15 and 17
PT Rim Capital	Goodhope	~27ha	November 15-December 6, 2019	Report 22
PT Krida Dharma Kahurpian	Makin Group	~26ha	November 15-December 6, 2019	Reports 5, 6, 11, 12, 16, 17, 19, 22

*Rapid Response reports are available on Mighty Earth's Rapid Response website page, [linked here](#).

Repeat Cases (continued)

Concession license area	Group/ownership	Area covered by screened GLAD alerts (ha)	Time period	Rapid Response reports related to each case*
PT Gapura Alas Lestari	Unknown	~26ha	November 15-December 6, 2019	Reports 16, 19, 20
PT Tani Subur Makmur	Unknown	~22ha	November 15-December 6, 2019	Report 17
PT Sentosa Kalimantan Jaya	Unknown	~21ha	November 15-December 6, 2019	Report 21
PT Gawi Bahandep Sawit Mekar	Triputra Agro Persada Group	~21ha	November 15-December 6, 2019	Report 21
PT Cipta Karya Sesayap	Unknown	~20ha	November 15-December 6, 2019	Reports 17 and 22
PT Citra Niaga Perkasa	Felda Global Ventures	~19ha	November 15-December 6, 2019	Report 20
PT Cipta Karsa Kahuripan	Makin Group	~19ha	November 15-December 6, 2019	Reports 21 and 22
PT Ginang Fohu Plantation	Bukit Berlian Plantation Group	~18ha	November 15-December 6, 2019	Report 17
PT Sabhantara Rawi Sentosa	Dhanistha Surya Nusantara	~17ha	November 15-December 6, 2019	Report 21
PT Fajar Saudara Lestari	Kalimantan Sawit Kusama	~16ha	November 15-December 6, 2019	Report 22
PT Citra Sawit Cemerlang	Genting Plantations	~14ha	November 15-December 6, 2019	Reports 14, 15, 16, 17, 19
PT Kayan Plantation	Unknown	~14ha	November 15-December 6, 2019	Reports 15, 16, 17, 18, 20, 21, 22
PT Sebaung Sawit Plantation (Smallholder)	Shanghai Xinjiu Chemical Co Ltd	~13ha	November 15-December 6, 2019	Reports 8, 12, 13, 16, 20, 21, 22
PT Rimbun Sawit Papua	Salim/Indogunta	~13ha	November 15-December 6, 2019	Reports 3, 10, 13, 14, 16, 17, 18, 20

*Rapid Response reports are available on Mighty Earth's Rapid Response website page, [linked here](#).

Repeat Cases (continued)

Concession license area	Group/ownership	Area covered by screened GLAD alerts (ha)	Time period	Rapid Response reports related to each case*
PT Arrtu Energie Resources	Eagle High Plantations Tbk	~12ha	November 15-December 6, 2019	Report 22
PT Rimbun Sawit Papua	Salim/Indogunta	~12ha	November 15-December 6, 2019	Reports 3, 10, 13, 14, 16, 17, 18, 20
PT Putra Sari Lestari	Hangzhou Jinjiang Group	~11ha	November 15-December 6, 2019	Report 22
PT Kusuma Alam Sari	Alas Kusuma Group	~11ha	November 15-December 6, 2019	Reports 7 and 17
PT Arvenasepakat	Incasi Raya Group	~11ha	November 15-December 6, 2019	Report 17
PT Putra Utama Lestari	Dharma Satya Nusantara	~11ha	November 15-December 6, 2019	Report 20
PT Bulungan Citra Agro Persada	TSH Resources Bhd	~11ha	November 15-December 6, 2019	Report 21
PT Palem Segar Lestari (Smallholder)	Henan Jiujiu Chemical Co Ltd	~11ha	November 15-December 6, 2019	Reports 5, 7, 12, 16, 18, 20, 21, 22
PT Nunukan Bara Sukses	Pipit Group	~11ha	November 15-December 6, 2019	Report 20
PT Jaya Jadi Utama	CB Industrial Product Holding	~11ha	November 15-December 6, 2019	Reports 15 and 20
PT Damai Agro Sejahtera	Bumitama Group	~10ha	November 15-December 6, 2019	Report 22
PT Putra Katingan Pratama	Kirana Megatara	~10ha	November 15-December 6, 2019	Report 17
PT Ruta Jona Lestari	Unknown	~10ha	November 15-December 6, 2019	Reports 17 and 22

*Rapid Response reports are available on Mighty Earth's Rapid Response website page, [linked here](#).

Repeat Cases (continued)

Concession license area	Group/ownership	Area covered by screened GLAD alerts (ha)	Time period	Rapid Response reports related to each case*
LPF/0007 Samling Jelalong (OP)	Samling Group	~131 ha	November 15-December 6, 2019	Reports 15, 16, 18, 19, 20, 21
LPF/0007 Jelalong OP (Glenealy) Part 3	Samling Group	~59 ha	November 15-December 6, 2019	Reports 18, 19, 20, 21
LPF/0007 Jelalong OP (Glenealy) Part 1	Samling Group	~19 ha	November 15-December 6, 2019	Reports 18, 19, 20, 21
Rimbunan Sawit Bhd	Rimbunan Hijau	~9 ha	November 15-December 6, 2019	Report 21
Danun Sinar Sdn Bhd	Puncak Niaga Sdn Bhd	~7 ha	November 15-December 6, 2019	Report 21
Dataran Linau OP (SY) (Lot 1 Block 14 Murum LD)	Shin Yang	~7 ha	November 15-December 6, 2019	Reports 17, 18, 19, 20, 21
Formerly Ekran Plantation	Unknown Group	~7 ha	November 15-December 6, 2019	Reports 19, 20, 21
Hydroflow	TH Plantations Bhd	~7 ha	November 15-December 6, 2019	Report 14
OT/0351 Empresa (M) SB	Yuwang	~7 ha	November 15-December 6, 2019	Reports 17 and 18
LPF/0006 Samling Lana	Samling Group	~6 ha	November 15-December 6, 2019	Reports 16, 18, 19, 20

*Rapid Response reports are available on Mighty Earth's Rapid Response website page, [linked here](#).