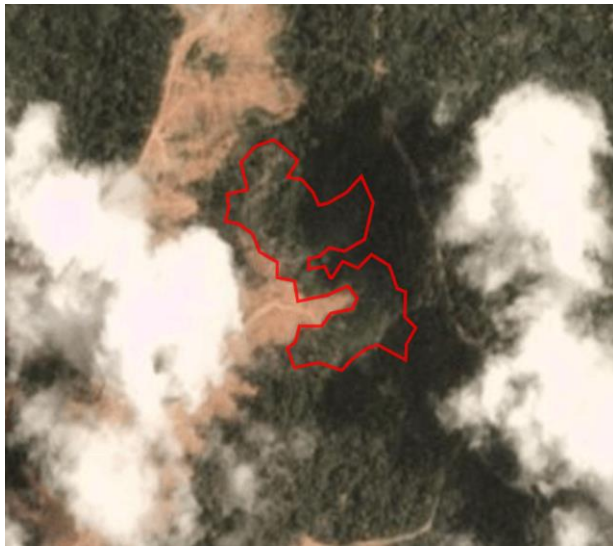


# Rapid Response

## Palm Oil, Report 22



**December 2019**

Prepared with support from MapHubs

## Table of Contents

### Cases identified using Planet imagery

#### Indonesian Companies

Agro Sarimas Group: PT Agro Sarimas Indonesia	4
Bumitama Group: PT Damai Agro Sejahtera	7
Eagle High Plantations Tbk: PT Arrtu Energie Resources	11
Fangiono Agro Plantation: PT Tirta Madu Sawit Jaya	14
Goodhope: PT Rim Capital	17
Indonusa Group: PT Internusa Jaya Sejahtera (Merauke) – area 1	20
Indonusa Group: PT Internusa Jaya Sejahtera (Merauke) – area 2	23
Kalimantan Sawit Kusama: PT Fajar Saudara Lestari	26
Mulia Sawit Agro Lestari (MSAL) Group: PT Persada Sejahtera Agro Makmur	29
Sampoerna Agro: PT Usaha Agro Indonesia	32

### Additional cases identified using filtered GLAD alerts

#### New Cases

Tadmax Bhd: PT Manunggal Sukses Mandiri	35
Unknown Group: Koperasi Bakung Agri	35
Unknown Group: PT Barito Riau Jaya	35
Unknown Group: PT Surya Buana Bersama	35
Hangzhou Jinjiang Group: PT Putra Sari Lestari	35

#### Repeat Cases

Unknown Group: PT Ruta Jona Lestari	36
Makin Group: PT Mekar Karya Kahuripan	36
Indonusa Group: PT Internusa Jaya Sejahtera	36
Widya Corporation: PT Mulia Inti Perkasa	36
Shanghai Xinjiu Chemical Co Ltd: PT Sebaung Sawit Plantation (Smallholder)	36
Korompis Family: PT Berau Karetindo Lestari	36
Unknown (former Makin Group): PT Krida Dharma Kahuripan	36
Mulia Sawit Group: PT Persada Era Agro Kencana	36
Bakrie Group: PT Mentobi Mitra Lestari	36
Palma Serasih Group: PT Global Primatama Mandiri	36

### Sources for supply chain information:

Supply chain information included in Rapid Response reports is based on the latest public versions of mill disclosures, recent export data and grievance logs. Mighty Earth encourages companies to send updated versions of mill disclosures as soon as they become available and to share any decision to suspend relations with a given group/company listed in those mill disclosures; please send to [rapidresponse@mightyearth.org](mailto:rapidresponse@mightyearth.org).

## Table of Contents (cont.)

### Additional Cases Identified Using Filtered GLAD Alerts

#### Repeat Cases (continued)

Makin Group: PT Cipta Karsa Kahuripan	36
Unknown Group: PT Triomas Forestry Development Indonesia	36
Unknown Group: PT Marita Makmur Jaya	36
PT Sawit Sumbermas Sarana Tbk: PT Sawit Mandiri Lestari	37
Henan Jiujiu Chemical Co Ltd & PT Citra Makmur Sentosa: PT Palem Segar Lestari (Smallholder)	37
Green Yield Pte Ltd: PT Tri Investama	37
Tadmax Sdn Bhd: PT Trimegah Karya Utama	37
Unknown Group: Koperasi Usaha Mandiri	37
Unknown Group: PT Kayan Plantation	37
Tabung Haji Plantations: PT Persada Kencana Prima	37
GAMA Group: PT Agrinusa Persada Mulia	37
Starmas Sentosa Mandiri: PT Agrindo Sukses Sejahtera	37
Venture Resources Pte Ltd: PT Sanggam Harapan Sejahtera	37
Unknown Group: PT Lestari Subur Indonesia	37
Unknown Group: PT Cipta Karya Sesayap	37
Mitra Jaya Group: PT Mitra Sawit Makmur	37

# Group: Agro Sarimas Group

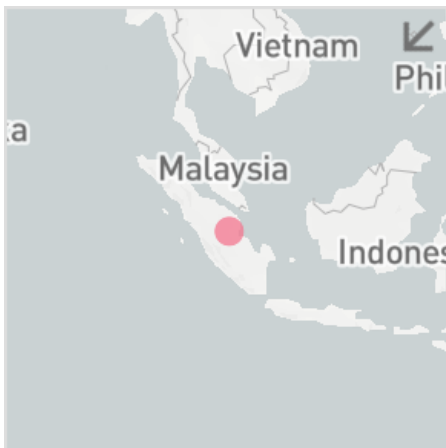
PT Agro Sarimas Indonesia

Concession location: (-0.611, 102.818)

## Deforestation and/or peat development

Report	Deforestation (ha)	Peat development (ha)	Peat forest development (ha)	Clearance prep/Stacking lines (ha)	Time period
Report 22	136	-	-	-	June 23 – November 21 2019

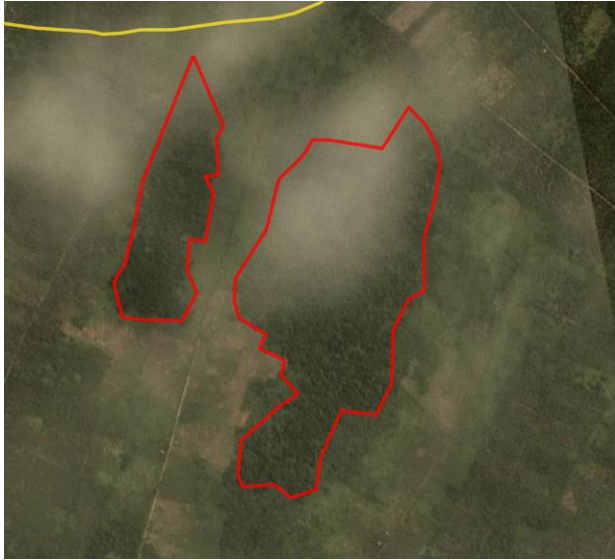
Satellite imagery (see below) shows that between June 23, 2019 and November 21, 2019 a total of 136 hectares of forest were cleared in the PT Agro Sarimas Indonesia concession. (Imagery © 2019 Planet Labs Inc.)



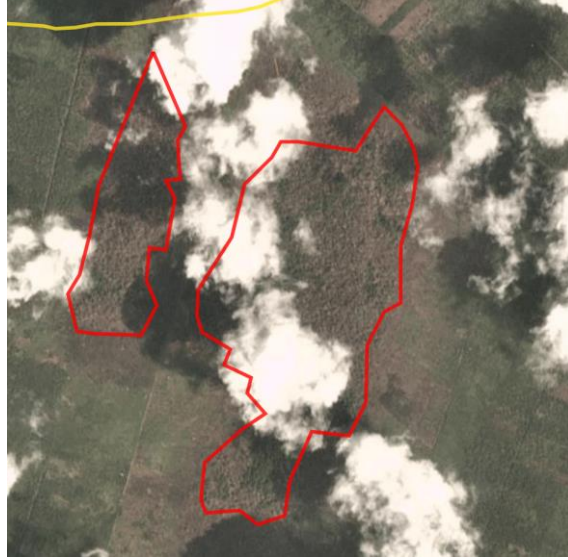
## Alert Imagery (before and after satellite images)

Clearance location: (-0.611, 102.818)

Date: June 23, 2019



Date: November 21, 2019



## Ownership Information

PT Agro Sarimas Indonesia is part of the Agro Sarimas Group.<sup>1</sup>

1. Sampoerna Agro Group annual report, 2018, p54. [www.sampoernaagro.com/pdf-files/AR\\_2018SampoernaAgroFinal\\_eReporting.pdf](http://www.sampoernaagro.com/pdf-files/AR_2018SampoernaAgroFinal_eReporting.pdf)

## Supply Chain Information

Supply Chain Links: Traders	ADM	Apical	Cargill	Fuji Oil	KLK	Olam
PT Agro Sarimas Indonesia					x	x
<b>Agro Sarimas Group</b>	x	x	x	x	x	x

Supply Chain Links: Traders	Sime Darby
PT Agro Sarimas Indonesia	
<b>Agro Sarimas Group</b>	x

Supply Chain Links: Consumer Brands	Avon	Colgate-Palmolive	Friesland Campina	General Mills	Hershey	Johnson & Johnson	Kellogg's
PT Agro Sarimas Indonesia	x			x			
<b>Agro Sarimas Group</b>	x	x	x	x	x	x	x

Supply Chain Links: Consumer Brands	Mars	Mondelez	Neste Oil	Nestle	PepsiCo	P&G	Reckitt Benckiser	Unilever
PT Agro Sarimas Indonesia	x		x	x	x			
<b>Agro Sarimas Group</b>	x	x	x	x	x	x	x	x



# Group: Bumitama Group

## PT Damai Agro Sejahtera

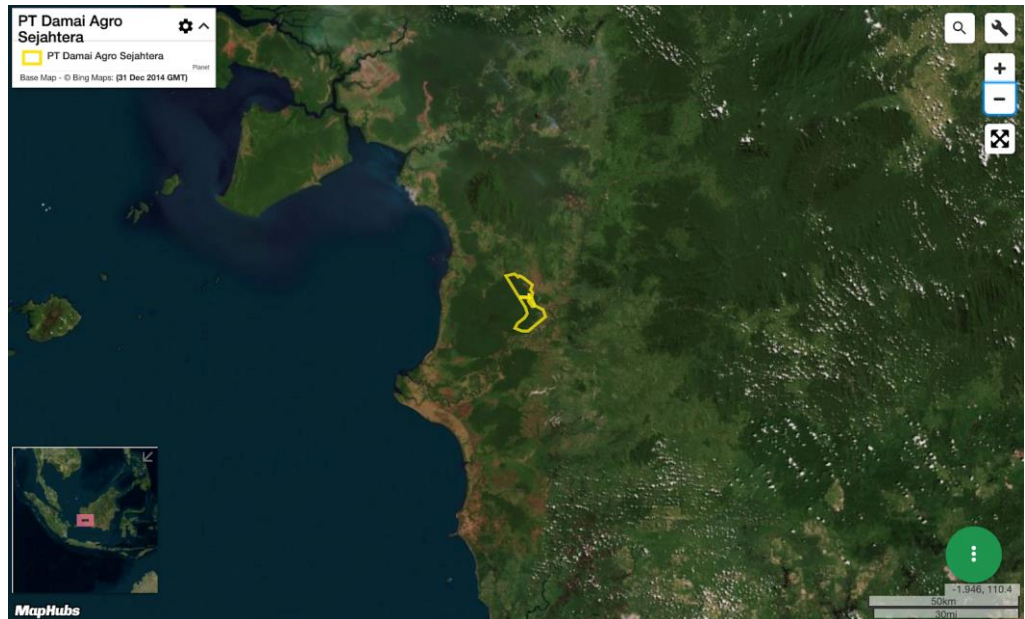
Concession location: (-1.5, 110.276)

### Deforestation and/or peat development

Report	Deforestation (ha)	Peat development (ha)	Peat forest development (ha)	Clearance prep/Stacking lines (ha)	Time period
Report 22	-	-	948	-	September 6 – November 13, 2019

Satellite imagery (see below) shows that between September 6, 2019 and November 13, 2019 a total of 948 hectares of peat forest were cleared in the PT Damai Agro Sejahtera concession. (Imagery © 2019 Planet Labs Inc.)

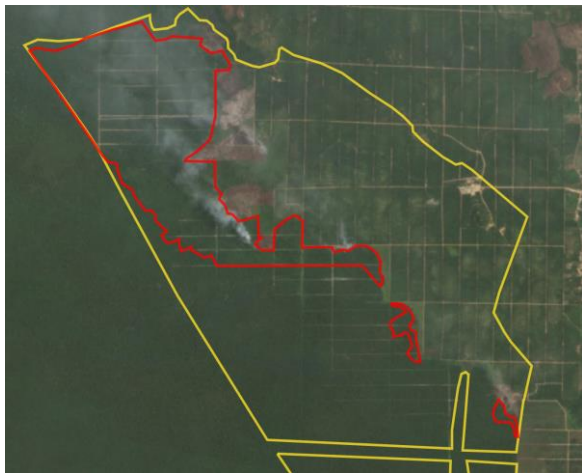
The vast majority of the clearing in the northern concession took place within areas identified for conservation in a 'Final HCS map' published in an [HCS peer review report](#) (Feb 2019). See HCS map on page 8 of this report.



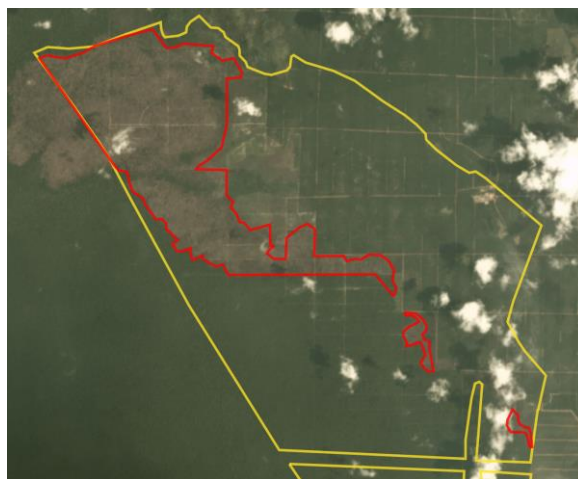
## Alert Imagery (before and after satellite images)

Clearance location: (-1.505, 110.264)

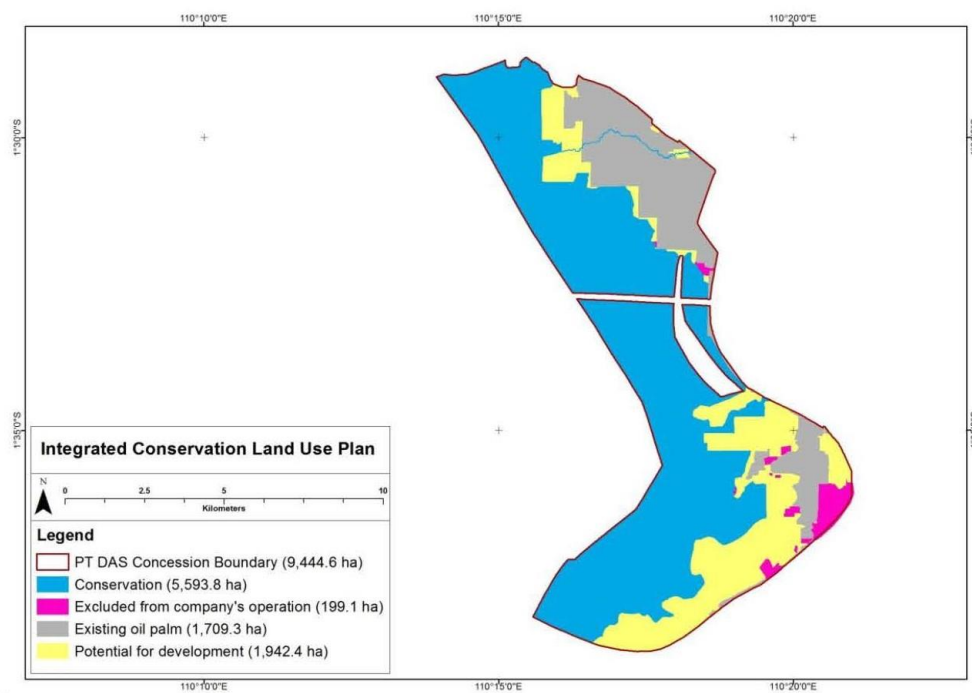
Date: September 6, 2019



Date: November 13, 2019



### 10.2 Final HCS map



Gambar 32. Area konservasi terintegrasi indikatif hasil analisis patch



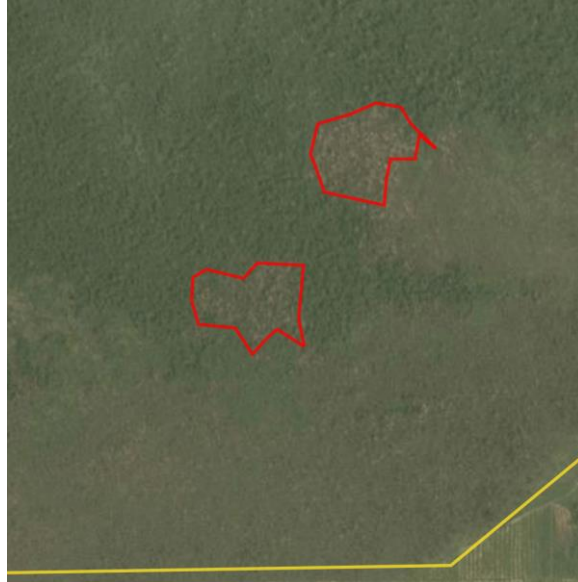
## Alert Imagery (before and after satellite images)

Clearance location: (-1.632, 110.296)

Date: September 6, 2019



Date: November 13, 2019



## Ownership Information

PT Damai Agro Sejahtera is part of the Bumitama Group.<sup>2</sup>

---

2. Bumitama Agri Ltd annual report, 2018, p86. <http://ir.bumitama-agri.com/static-files/2e0c8a3e-f0fc-4b78-838f-e043b6543237>

## Supply Chain Information

Supply Chain Links: Traders	ADM	Apical	Bunge	Cargill	Felda IFFCO	Fuji Oil
PT Damai Agro Sejahtera						
<b>Bumitama Group</b>	x	x	x	x	x	x

Supply Chain Links: Traders	GAR	KLK	Musim Mas	PIL (via ICOF)	Sime Darby	Wilmar
PT Damai Agro Sejahtera						
<b>Bumitama Group</b>	x	x	x	x	x	x

Supply Chain Links: Consumer Brands	Avon	Colgate-Palmolive	Friesland Campina	General Mills	Hershey	Johnson & Johnson	Kellogg's
PT Damai Agro Sejahtera							
<b>Bumitama Group</b>	x	x	x	x	x	x	x

Supply Chain Links: Consumer Brands	Mars	Mondelez	Neste Oil	Nestle	P&G	PepsiCo	Reckitt Benckiser	Unilever
PT Damai Agro Sejahtera								
<b>Bumitama Group</b>	x	x	x	x	x	x	x	x

# Group: Eagle High Plantations Tbk

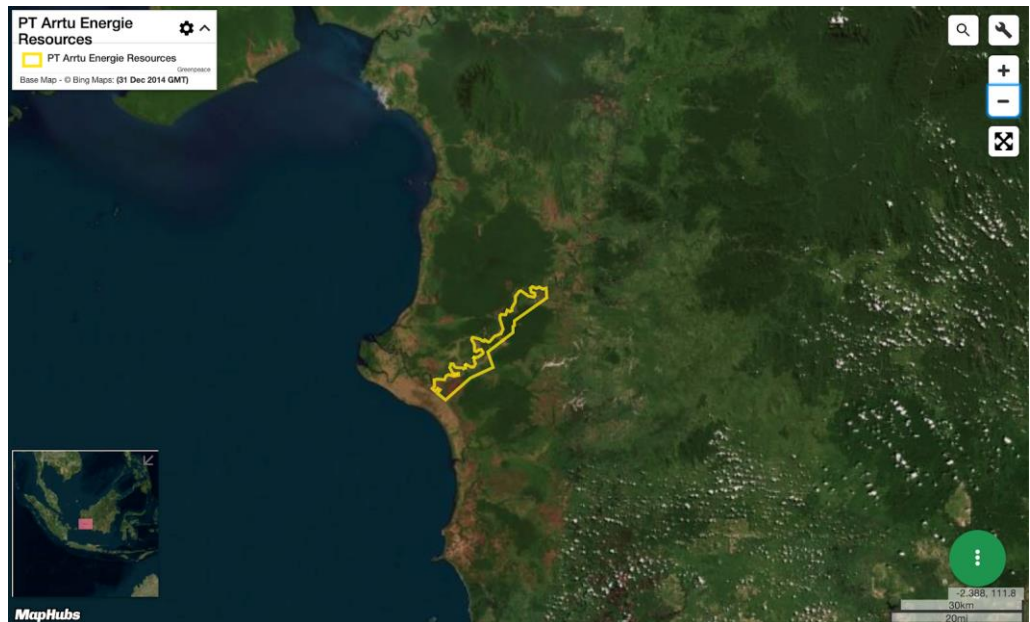
## PT Arrtu Energie Resources

Concession location: (-1.721,110.253)

### Deforestation and/or peat development

Report	Deforestation (ha)	Peat development (ha)	Peat forest development (ha)	Clearance prep/Stacking lines (ha)	Time period
Report 22	109	-	-	-	July 14 – November 13, 2019

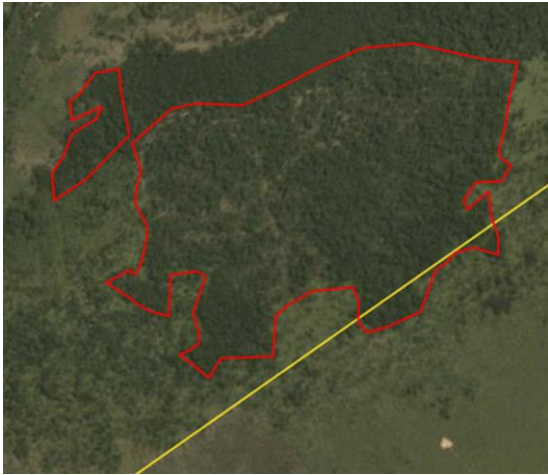
Satellite imagery (see below) shows that between July 14, 2019 and November 13, 2019 a total of 109 hectares of forest were cleared in the PT Arrtu Energie Resources concession. (Imagery © 2019 Planet Labs Inc.)



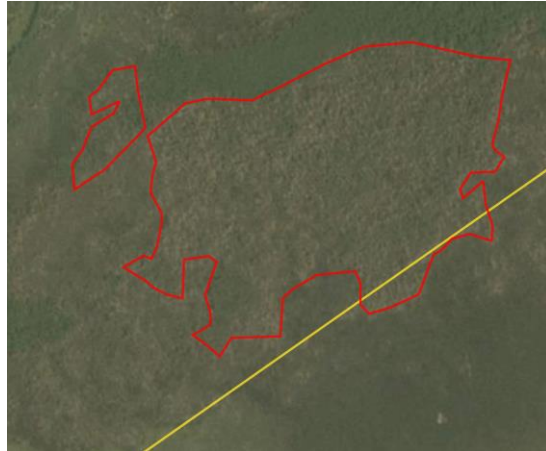
## Alert Imagery (before and after satellite images)

Clearance location: (-1.721, 110.253)

Date: July 14, 2019



Date: November 13, 2019



## Ownership Information

PT Arrtu Energie Resources is part of the Eagle High Plantations Group.<sup>3</sup>

3. p10 Eagle High Plantations Tbk annual report, 2018. [www.eaglehighplantations.com/uploads/1/0/8/4/108415631/ehp\\_ar2018\\_small-compressed.pdf](http://www.eaglehighplantations.com/uploads/1/0/8/4/108415631/ehp_ar2018_small-compressed.pdf)

## Supply Chain Information

Supply Chain Links: Traders	ADM	Bunge	Cargill	Felda IFFCO	GAR
PT Arrtu Energie Resources					
<b>Eagle High Plantations Tbk</b>	x	x	x	x	x

Supply Chain Links: Traders	KLK	Musim Mas	Sime Darby	Wilmar
PT Arrtu Energie Resources				
<b>Eagle High Plantations Tbk</b>	x	x	x	x

Supply Chain Links: Consumer Brands	Avon	Colgate-Palmolive	Friesland Campina	General Mills	Johnson & Johnson	Kellogg's
PT Arrtu Energie Resources						
<b>Eagle High Plantations Tbk</b>	x	x	x	x	x	x

Supply Chain Links: Consumer Brands	Neste Oil	Nestle	P&G	PepsiCo	Reckitt Benckiser	Unilever
PT Arrtu Energie Resources						
<b>Eagle High Plantations Tbk</b>	x	x	x	x	x	x

# Group: Fangiono Agro Plantation

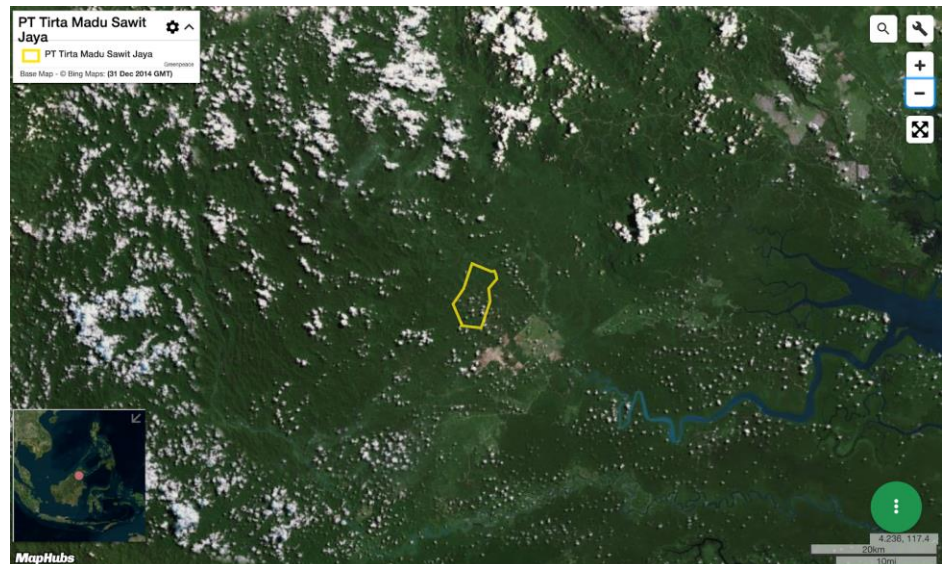
PT Tirta Madu Sawit Jaya

Concession location: (4.106, 116.898)

## Deforestation and/or peat development

Report	Deforestation (ha)	Peat development (ha)	Peat forest development (ha)	Clearance prep/Stacking lines (ha)	Time period
Report 22	17	-	-	-	September 7 – November 13, 2019

Satellite imagery (see below) shows that between September 7, 2019 and November 13, 2019 a total of 17 hectares of forest were cleared in the PT Tirta Madu Sawit Jaya concession. (Imagery © 2019 Planet Labs Inc.).

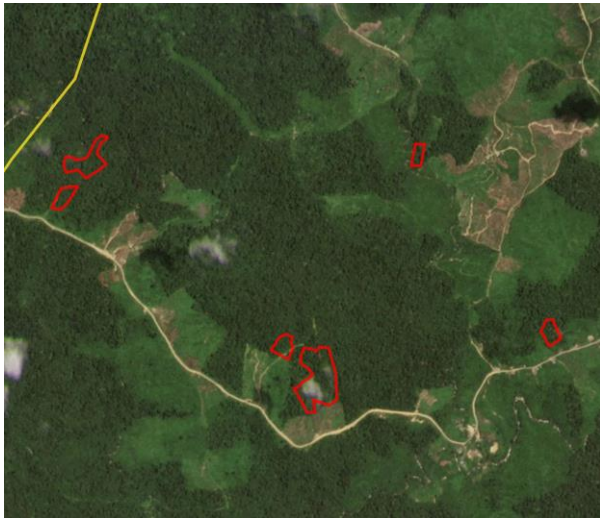




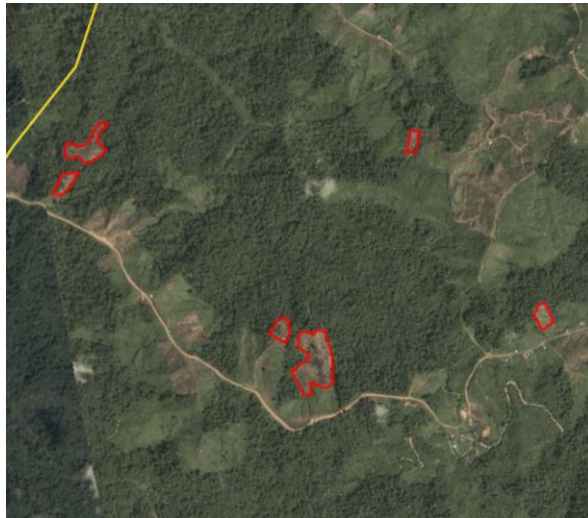
## Alert Imagery (before and after satellite images)

Clearance location: (4.101, 116.891)

Date: September 7, 2019

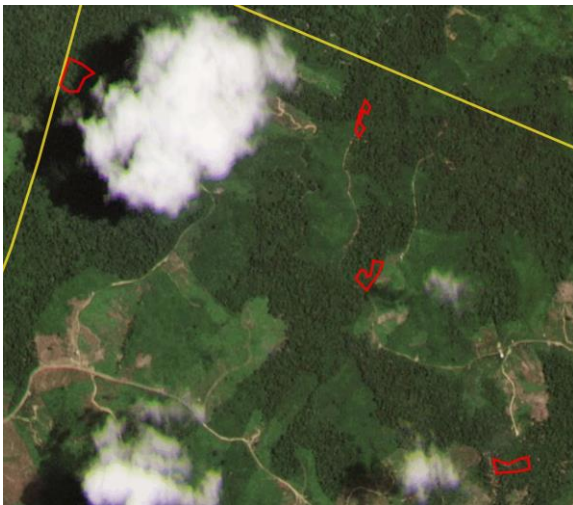


Date: November 13, 2019



Clearance location: (4.136, 116.903)

Date: September 6, 2019



Date: November 13, 2019



## Ownership Information

PT Tirta Madu Sawit Jaya is part of the Fangiono Agro Plantation Group.<sup>4</sup>

---

4. Notary Act for PT Tirta Madu Sawit.

## Supply Chain Information

Supply Chain Links: Traders	ADM	KLK	Musim Mas	Olam	Sime Darby	Wilmar
PT Tirta Madu Sawit Jaya		x	x		x	x
<b>Fangiono Agro Plantation</b>	x	x	x	x	x	x

Supply Chain Links: Consumer Brands	Avon	Colgate-Palmolive	Friesland Campina	General Mills	Hershey	Kellogg's	Mars
PT Tirta Madu Sawit Jaya	x	x	x	x	x	x	x
<b>Fangiono Agro Plantation</b>	x	x	x	x	x	x	x

Supply Chain Links: Consumer Brands	Mondelez	Neste Oil	Nestle	P&G	PepsiCo	Reckitt Benckiser	Unilever
PT Tirta Madu Sawit Jaya	x	x	x	x	x	x	x
<b>Fangiono Agro Plantation</b>	x	x	x	x	x	x	x

## Group: Goodhope

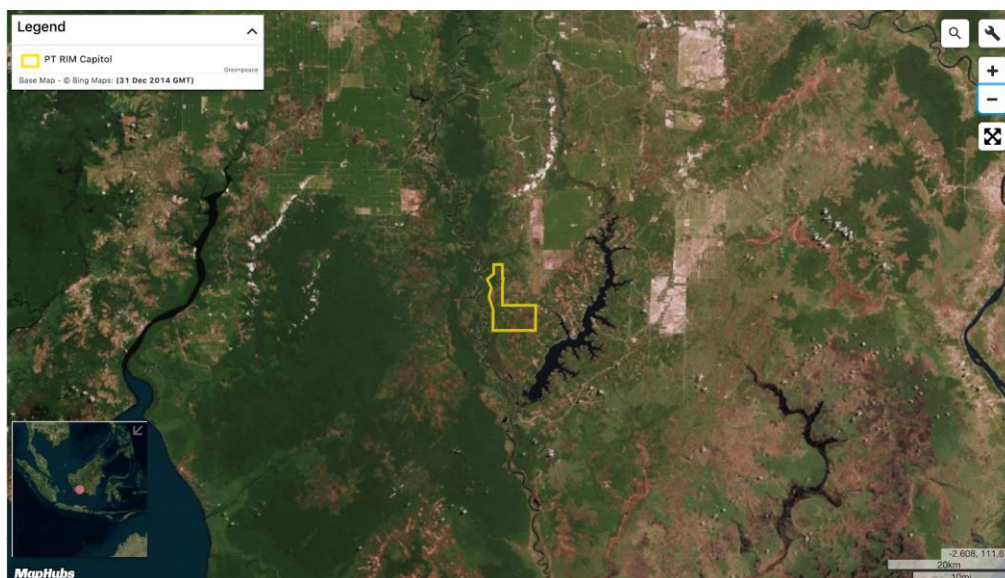
### PT Rim Capital

Concession location: (-2.709, 112.259)

#### Deforestation and/or peat development

Report	Deforestation (ha)	Peat development (ha)	Peat forest development (ha)	Clearance prep/Stacking lines (ha)	Time period
Report 22	39	-	-		September 11 – November 2, 2019

Satellite imagery (see below) shows that between September 11, 2019 and November 2, 2019 a total of 39 hectares of forest were cleared in the PT Rim Capital concession. (Imagery © 2019 Planet Labs Inc.)



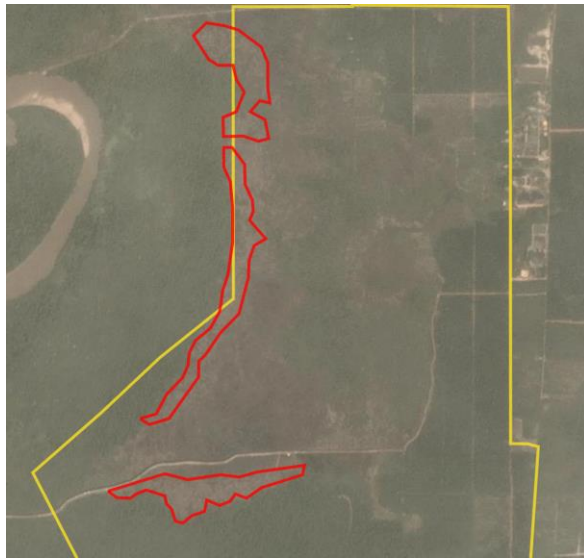
### Alert Imagery (before and after satellite images)

Clearance location: (-2.661, 112.231)

Date: September 11, 2019



Date: November 2, 2019



Clearance location: (-2.689, 112.227)

Date: September 11, 2019



Date: November 2, 2019



### Ownership Information

PT Rim Capital is part of the Goodhope Group.<sup>5</sup>

5. Goodhope Holdings website, [www.goodhopeholdings.com/business-sectors/oil-palm-plantation](http://www.goodhopeholdings.com/business-sectors/oil-palm-plantation)



## Supply Chain Information

Supply Chain Links: Traders	ADM	Cargill	Felda IFFCO	Fuji Oil	IOI
PT Rim Capital					
<b>Goodhope</b>	x	x	x	x	x

Supply Chain Links: Traders	KLK	Mewah	Musim Mas	Sime Darby	Wilmar
PT Rim Capital					
<b>Goodhope</b>	x	x	x	x	x

Supply Chain Links: Consumer Brands	Avon	Colgate-Palmolive	Friesland Campina	General Mills	Hershey	Johnson & Johnson	Kellogg's
PT Rim Capital							
<b>Goodhope</b>	x	x	x	x	x	x	x

Supply Chain Links: Consumer Brands	Louis Dreyfus	Mars	Nestle	P&G	PepsiCo	Reckitt Benckiser	Unilever
PT Rim Capital			x				
<b>Goodhope</b>	x	x	x	x	x	x	x

## Group: Indonusa

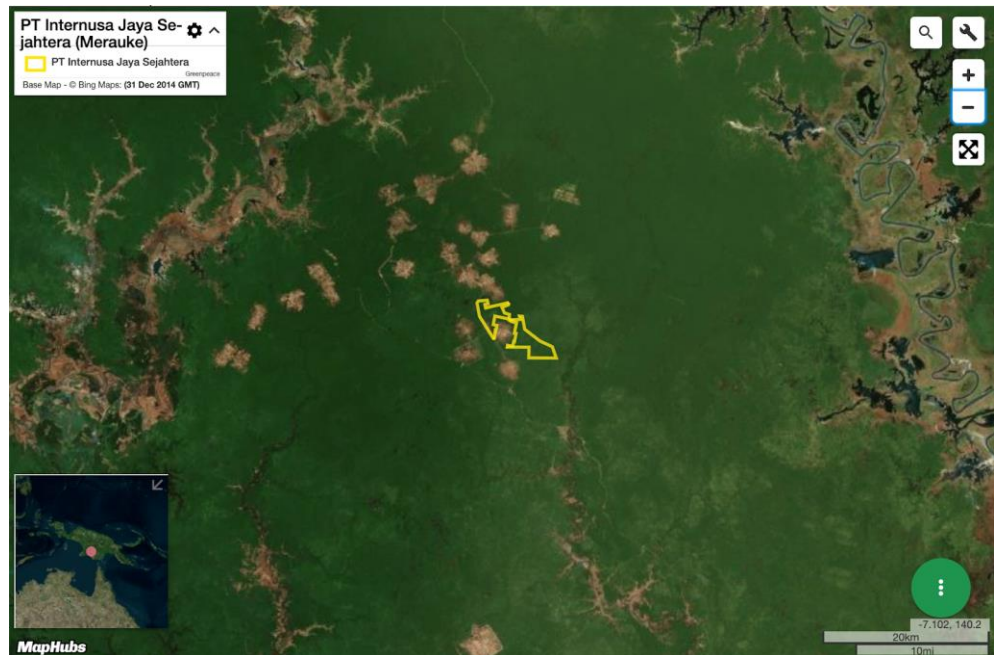
### PT Internusa Jaya Sejahtera (Merauke) – area 1

Concession location: (-7.438, 140.779)

#### Deforestation and/or peat development

Report	Deforestation (ha)	Peat development (ha)	Peat forest development (ha)	Clearance prep/Stacking lines (ha)	Time period
Report 22	936	-	-	192	March 20 - October 20, 2019

Satellite imagery (see below) shows that between March 20, 2019 and October 20, 2019 a total of 936 hectares of forest were cleared and 192 hectares were prepared for clearance in the PT Internusa Jaya Sejahtera (Merauke) concession – area 1. (Imagery © 2019 Planet Labs Inc.)

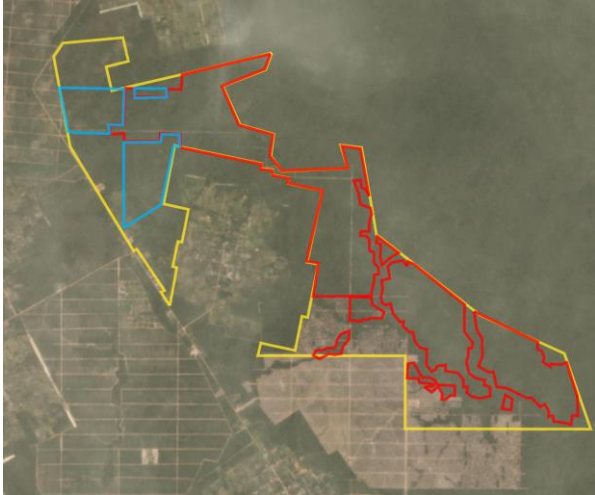




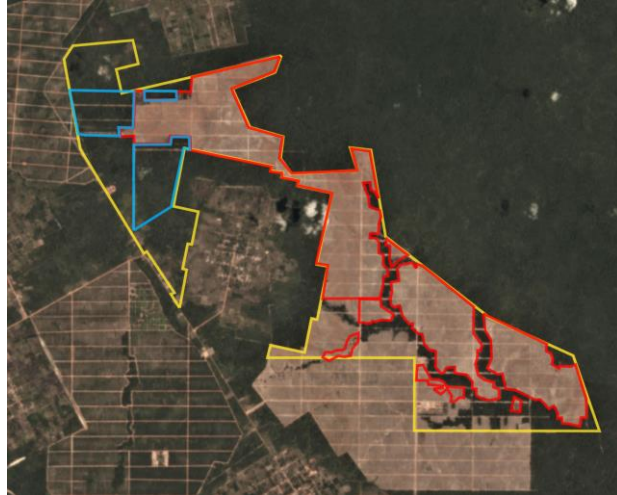
## Alert Imagery (before and after satellite images)

Clearance location: (-7.438, 140.779)

Date: March 20, 2019



Date: October 20, 2019



## Ownership Information

PT Internusa Jaya Sejahtera is part of the Indonusa Group.<sup>6</sup>

---

6. See Rapid Response report 12 for ownership details

## Supply Chain Information

Supply Chain Links: Traders	Felda IFFCO
PT Internusa Jaya Sejahtera	
<b>Indonusa</b>	<b>x</b>

Supply Chain Links: Consumer Brands	Avon	General Mills	Hershey	Johnson & Johnson	Kellogg's	Mondelez	Neste
PT Internusa Jaya Sejahtera							
<b>Indonusa</b>	<b>x</b>	<b>x</b>	<b>x</b>	<b>x</b>	<b>x</b>	<b>x</b>	<b>x</b>

Supply Chain Links: Consumer Brands	Nestle	PepsiCo	PZ Cussons	Reckitt Benckiser	Unilever
PT Internusa Jaya Sejahtera					
<b>Indonusa</b>	<b>x</b>	<b>x</b>	<b>x</b>	<b>x</b>	<b>x</b>

## Group: Indonusa

### PT Internusa Jaya Sejahtera (Merauke) – area 2

Concession location: (-7.344, 140.822)

#### Deforestation and/or peat development

Report	Deforestation (ha)	Peat development (ha)	Peat forest development (ha)	Clearance prep/Stacking lines (ha)	Time period
Report 22	207	-	-		January 6-November 18, 2019

Satellite imagery (see below) shows that between January 6, 2019 and November 18, 2019 a total of 207 hectares of forest were cleared in the PT Internusa Jaya Sejahtera (Merauke) concession – area 2. (Imagery © 2019 Planet Labs Inc.)



## Alert Imagery (before and after satellite images)

Clearance location: (-7.344, 140.822)

Date: January 6, 2019



Date: November 18, 2019



## Ownership Information

PT Internusa Jaya Sejahtera is part of the Indonusa Group.<sup>7</sup>

---

7. See Rapid Response report 12 for ownership details

## Supply Chain Information

Supply Chain Links: Traders	Felda IFFCO
PT Internusa Jaya Sejahtera	
<b>Indonusa</b>	<b>x</b>

Supply Chain Links: Consumer Brands	Avon	General Mills	Hershey	Johnson & Johnson	Kellogg's	Mondelez	Neste
PT Internusa Jaya Sejahtera							
<b>Indonusa</b>	<b>x</b>	<b>x</b>	<b>x</b>	<b>x</b>	<b>x</b>	<b>x</b>	<b>x</b>

Supply Chain Links: Consumer Brands	Nestle	PepsiCo	PZ Cussons	Reckitt Benckiser	Unilever
PT Internusa Jaya Sejahtera					
<b>Indonusa</b>	<b>x</b>	<b>x</b>	<b>x</b>	<b>x</b>	<b>x</b>

# Group: Kalimantan Sawit Kusama

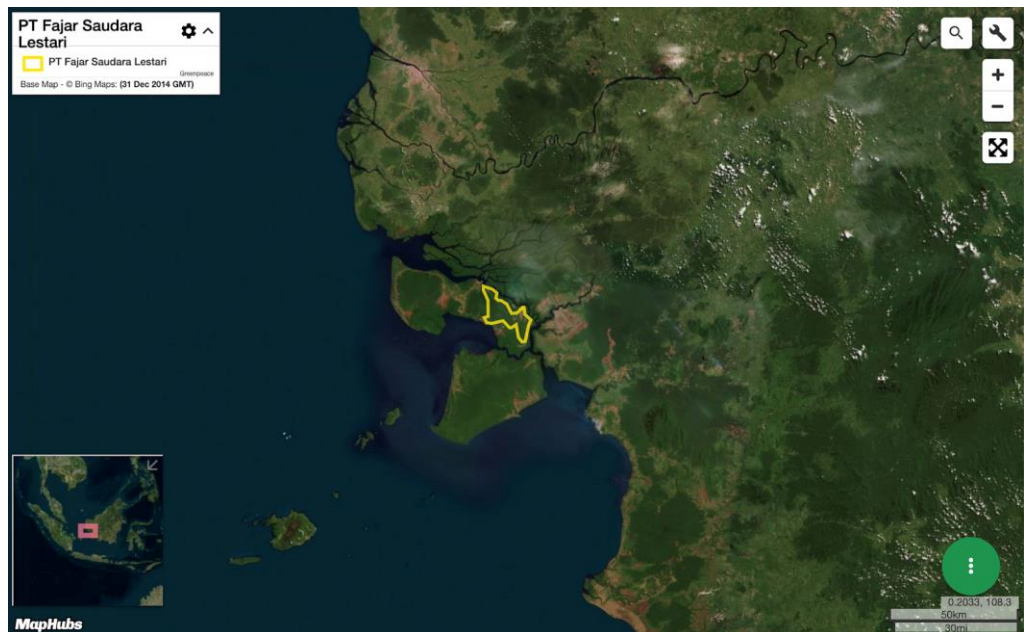
PT Fajar Saudara Lestari

Concession location: (-0.857, 109.638)

## Deforestation and/or peat development

Report	Deforestation (ha)	Peat development (ha)	Peat forest development (ha)	Clearance prep/Stacking lines (ha)	Time period
Report 22	106	-	-	-	September 7 – November 13, 2019

Satellite imagery (see below) shows that between September 7, 2019 and November 13, 2019 a total of 106 hectares of forest were cleared in the PT Fajar Saudara Lestari concession. (Imagery © 2019 Planet Labs Inc.)

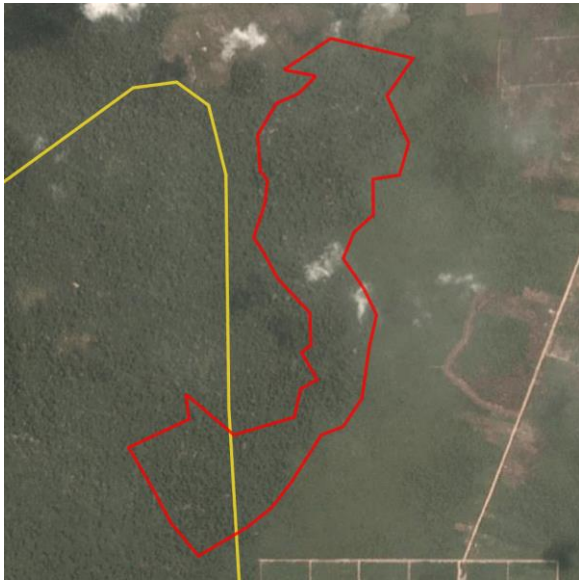




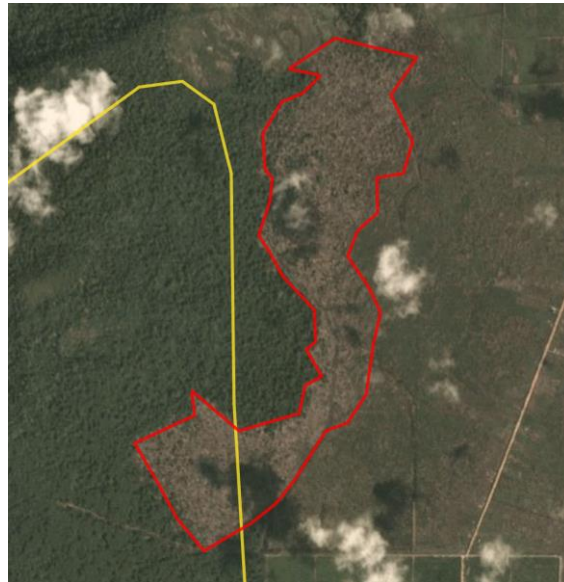
## Alert Imagery (before and after satellite images)

Clearance location: (-0.907, 109.677)

Date: September 3, 2019



Date: November 27, 2019



## Ownership Information

PT Fajar Saudara Lestari is part of PT Kalimantan Sawit Kusuma (KSK Group).<sup>8</sup>

---

8. Notary Act for PT Fajar Saudara Lestari and various palm oil traders' mill lists.

## Supply Chain Information

Supply Chain Links: Traders	AAK	ADM	Cargill	Fuji Oil	GAR
PT Fajar Saudara Lestari		x	x	x	x
Kalimantan Sawit Kusama	x	x	x	x	x

Supply Chain Links: Traders	KLK	Louis Dreyfus	Musim Mas	Sime Darby	Wilmar
PT Fajar Saudara Lestari	x				
Kalimantan Sawit Kusama	x	x	x	x	x

Supply Chain Links: Consumer Brands	Avon	Colgate-Palmolive	Friesland Campina	General Mills	Hershey	Johnson & Johnson	Kellogg's
PT Fajar Saudara Lestari	x	x		x	x		x
Kalimantan Sawit Kusama	x	x	x	x	x	x	x

Supply Chain Links: Consumer Brands	Mars	Mondelez	Nestle	P&G	PepsiCo	Reckitt Benckiser	Unilever
PT Fajar Saudara Lestari	x	x	x	x	x		x
Kalimantan Sawit Kusama	x	x	x	x	x	x	x

# Group: Mulia Sawit Agro Lestari (MSAL)

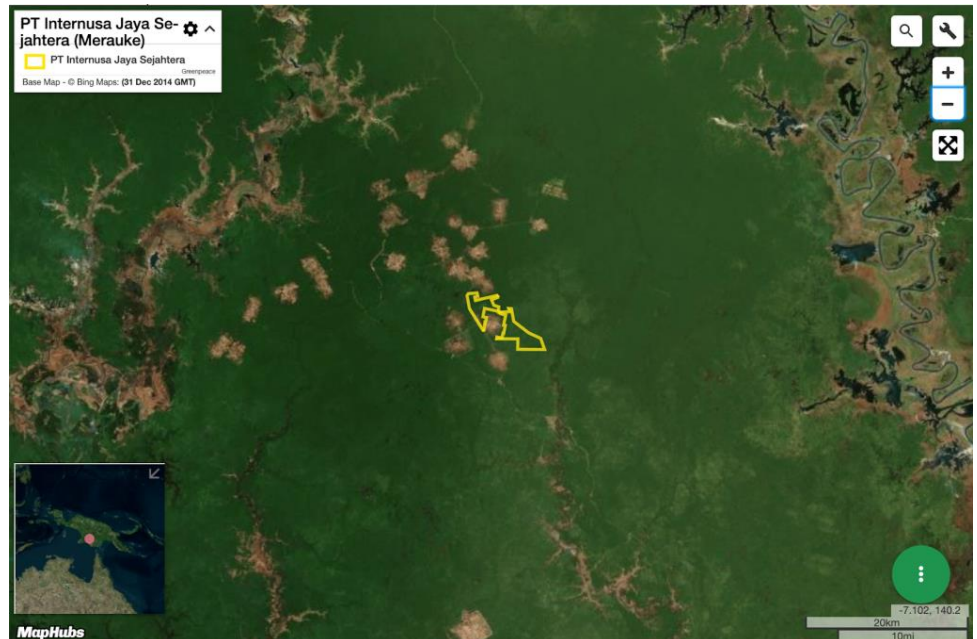
PT Persada Sejahtera Agro Makmur

Concession location: (-7.438, 140.779)

## Deforestation and/or peat development

Report	Deforestation (ha)	Peat development (ha)	Peat forest development (ha)	Clearance prep/Stacking lines (ha)	Time period
Report 22	936	-	-	192	March 20 – October 20, 2019

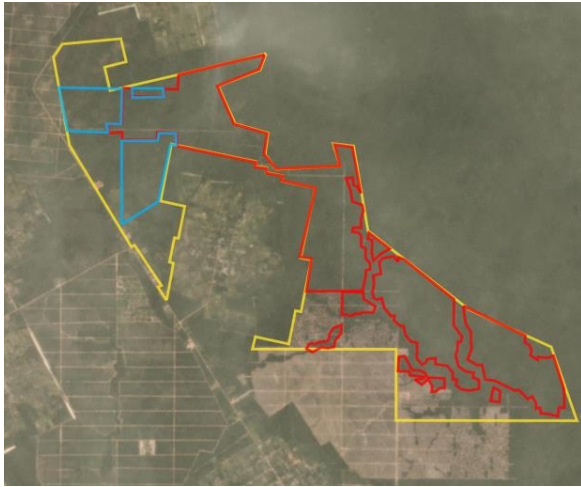
Satellite imagery (see below) shows that between March 20, 2019 and October 20, 2019 a total of 936 hectares of forest were cleared and 192 hectares were prepared for clearance in the PT Persada Sejahtera Agro Makmur concession. (Imagery © 2019 Planet Labs Inc.)



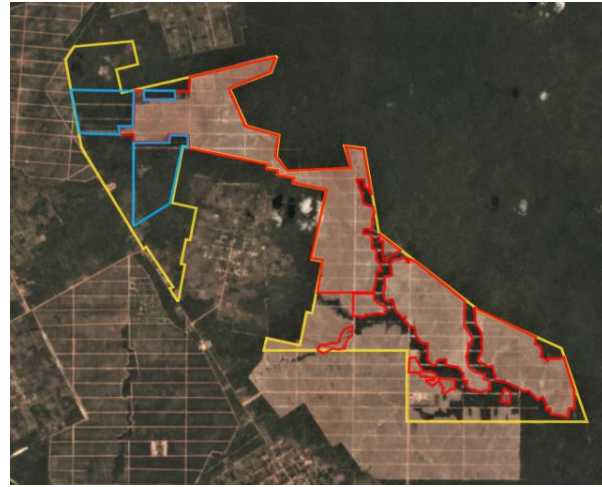
## Alert Imagery (before and after satellite images)

Clearance location: (-7.438, 140.779)

Date: March 20, 2019



Date: October 20, 2019



## Ownership Information

PT Persada Sejahtera Agro Makmur is part of PT Mulia Sawit Agro Lestari (MSAL Group).<sup>9</sup>

9. See Rapid Response report 20 for ownership details.

## Supply Chain Information

Supply Chain Links: Traders	Felda IFFCO
PT Persada Sejahtera Agro Makmur	
<b>Mulia Sawit Agro Lestari</b>	<b>x</b>

Supply Chain Links: Consumer Brands	Avon	General Mills	Kellogg's	Mondelez
PT Persada Sejahtera Agro Makmur				
<b>Mulia Sawit Agro Lestari</b>	<b>x</b>	<b>x</b>	<b>x</b>	<b>x</b>

Supply Chain Links: Consumer Brands	Neste Oil	Nestle	PepsiCo	PZ Cussons	Unilever
PT Persada Sejahtera Agro Makmur					
<b>Mulia Sawit Agro Lestari</b>	<b>x</b>	<b>x</b>	<b>x</b>	<b>x</b>	<b>x</b>

# Group: Sampoerna Agro

## PT Usaha Agro Indonesia

Concession location: (-2.67, 110.965)

### Deforestation and/or peat development

Report	Deforestation (ha)	Peat development (ha)	Peat forest development (ha)	Clearance prep/Stacking lines (ha)	Time period
Report 22	84	-	-		June 27 – November 15, 2019

Satellite imagery (see below) shows that between June 27, 2019 and November 15, 2019 a total of 84 hectares of forest were cleared in the PT Usaha Agro Indonesia concession. (Imagery © 2019 Planet Labs Inc.)

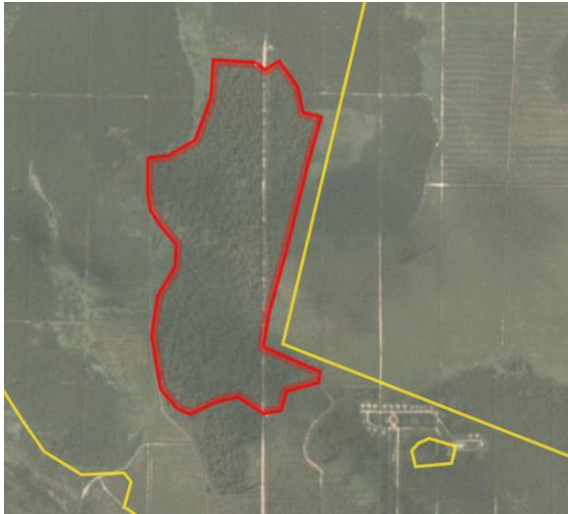




## Alert Imagery (before and after satellite images)

Clearance location: (-2.67024, 110.96434)

Date: June 27, 2019



Date: November 15, 2019



## Ownership Information

PT Usaha Agro Indonesia is part of the Sampoerna Agro Group.<sup>10</sup>

10. p54 Sampoerna Agro Group annual report, 2018. [www.sampoernaagro.com/pdf-files/AR\\_2018SampoernaAgroFinal\\_eReporting.pdf](http://www.sampoernaagro.com/pdf-files/AR_2018SampoernaAgroFinal_eReporting.pdf).

## Supply Chain Information

Supply Chain Links: Traders	AAK	ADM	Cargill	Felda IFFCO	Fuji Oil	GAR
PT Usaha Agro Indonesia	x	x	x		x	x
<b>Sampoerna Agro</b>	x	x	x	x	x	x

Supply Chain Links: Traders	KLK	Musim Mas	Olam	Pacific Inter-Link (via Indopalm)	Wilmar
PT Usaha Agro Indonesia	x				
<b>Sampoerna Agro</b>	x	x	x	x	x

Supply Chain Links: Consumer Brands	Avon	Colgate-Palmolive	Friesland Campina	General Mills	Hershey	Johnson & Johnson
PT Usaha Agro Indonesia	x	x	x	x	x	
<b>Sampoerna Agro</b>	x	x	x	x	x	x

Supply Chain Links: Consumer Brands	Kellogg's	Louis Dreyfus	Mars	Mondelez	Neste Oil	Nestle
PT Usaha Agro Indonesia	x		x	x	x	x
<b>Sampoerna Agro</b>	x	x	x	x	x	x

Supply Chain Links: Consumer Brands	P&G	PepsiCo	PZ Cussons	Reckitt Benckiser	Unilever
PT Usaha Agro Indonesia	x	x		x	x
<b>Sampoerna Agro</b>	x	x	x	x	x

## Additional cases identified using screened GLAD alerts

The following cases have been identified through screened GLAD alerts (see methodology below). As these cases are either repeat cases from previous Rapid Response reports or where Mighty Earth did not determine any supply chain links for these concessions/Groups, no Planet image analysis was conducted for these cases to save resources.

**Mighty Earth expects that palm oil traders conduct their own due diligence to determine if they are exposed to such companies/Groups. Further, traders without supply chain links to these cases should put them on their 'no buy' lists.**

Methodology:

For Indonesia, GLAD alerts are screened using the Indonesia Ministry of Forestry and the Environment land cover dataset for 2017 which classifies existing palm oil plantations and primary and secondary forest. Hence, only GLAD alerts in primary and secondary forest according to that dataset are included.

For Malaysia, GLAD alerts are screened to exclude known plantation areas using the Global Forest Watch (GFW) plantations dataset. This automatically eliminates the most common false positives, i.e. the replanting of palm that existed prior to the year 2000.

New Cases				
Concession/ license area	Group ownership	Area covered by screened GLAD alerts (ha)	Time period	Supply chain connection identified
PT Manunggal Sukses Mandiri	Tadmax Bhd	~11	October 15- November 14, 2019	None
Koperasi Bakung Agri	Unknown Group	~27	October 15- November 14, 2019	None
PT Barito Riau Jaya	Unknown Group	~71	October 15- November 14, 2019	None
PT Surya Buana Bersama	Unknown Group	~89	October 15- November 14, 2019	None
PT Putra Sari Lestari	Hangzhou Jinjiang Group	~11	October 15- November 14, 2019	None

## Repeat Cases

Concession license area	Group/ownership	Area covered by screened GLAD alerts (ha)	Time period	Rapid Response reports related to each case*
PT Ruta Jona Lestari	Unknown Group	~11ha	October 15- November 14, 2019	Report 17
PT Mekar Karya Kahuripan	Makin Group	~200ha	October 15- November 14, 2019	Reports 17 and 21
PT Internusa Jaya Sejahtera	Indonusa Group	~197ha	October 15- November 14, 2019	Reports 7, 10, 11, 12, 15, 16, 17, 20
PT Mulia Inti Perkasa	Widya Corporation	~186ha	October 15- November 14, 2019	Reports 6, 15, 16, 20, 21
PT Sebaung Sawit Plantation (Smallholder)	Shanghai Xinjiu Chemical Co Ltd	~120ha	October 15- November 14, 2019	Reports 8, 12, 13, 16, 20, 21
PT Berau Karetindo Lestari	Korompis Family	~104ha	October 15- November 14, 2019	Reports 2, 6, 9, 15, 16, 19, 20, 21
PT Krida Dharma Kahuripan	Unknown (former Makin Group)	~102ha	October 15- November 14, 2019	Reports 5, 6, 11, 12, 16, 17, 19
PT Persada Era Agro Kencana	Mulia Sawit Group	~76ha	October 15- November 14, 2019	Reports 9, 10, 11, 12, 15, 16, 17, 18, 19, 20
PT Menthobi Mitra Lestari	Bakrie Group	~75ha	October 15- November 14, 2019	Reports 16, 17, 20
PT Global Primatama Mandiri	Palma Serasih Group	~73ha	October 15- November 14, 2019	Reports 13 and 21
PT Cipta Karsa Kahuripan	Makin Group	~46ha	October 15- November 14, 2019	Report 21
PT Triomas Forestry Development Indonesia	Unknown	~39ha	October 15- November 14, 2019	Report 17
PT Marita Makmur Jaya	Unknown	~34ha	October 15- November 14, 2019	Reports 12, 15, 17, 19

\*Rapid Response reports available on Mighty Earth's Rapid Response website page, [linked here](#).

## Repeat Cases (continued)

Concession license area	Group/ownership	Area covered by screened GLAD alerts (ha)	Time period	Rapid Response reports related to each case*
PT Sawit Mandiri Lestari	PT Sawit Sumbermas Sarana Tbk	~29ha	October 15- November 14, 2019	Reports 3, 7, 8, 9, 10, 14, 15, 16, 17, 18, 20
PT Palembang Segar Lestari (Smallholder)	Henan Jiujiu Chemical Co Ltd & PT Citra Makmur Sentosa	~24ha	October 15- November 14, 2019	Reports 5, 7, 12, 16, 18, 20, 21
PT Tri Investama	Green Yield Pte Ltd	~21ha	October 15- November 14, 2019	Reports 20 and 21
PT Trimegah Karya Utama	Tadmax Sdn Bhd	~18ha	October 15- November 14, 2019	Report 17
Koperasi Usaha Mandiri	Unknown	~16ha	October 15- November 14, 2019	Reports 17, 19, 20, 21
PT Kayan Plantation	Unknown	~16ha	October 15- November 14, 2019	Reports 15, 16, 17, 18, 20, 21
PT Persada Kencana Prima	Tabung Haji Plantations	~15ha	October 15- November 14, 2019	Report 5
PT Agrinusa Persada Mulia	GAMA Group	~14ha	October 15- November 14, 2019	Reports 3 and 20
PT Agrindo Sukses Sejahtera	Starmas Sentosa Mandiri	~11ha	October 15- November 14, 2019	Reports 8 and 16
PT Sanggam Harapan Sejahtera	Venture Resources Pte Ltd	~16ha	October 15- November 14, 2019	Report 8
PT Lestari Subur Indonesia	Unknown	~136ha	October 15- November 14, 2019	Report 20
PT Cipta Karya Sesayap	Unknown	~84ha	October 15- November 14, 2019	Report 17
PT Mitra Sawit Makmur	Mitra Jaya Group	~12ha	October 15- November 14, 2019	Report 20

\*Rapid Response reports are available on Mighty Earth's Rapid Response website page, [linked here](#).