

# Rapid Response

## Palm Oil, Report 21



**November 2019**

Prepared with support from MapHubs

## Table of Contents

### Cases identified using Planet imagery

#### Indonesian Companies

Dhanistha Surya Nusantara: PT Sabhantara Rawi Sentosa	5
First Resources: PT Ketapang Agro Lestari	8
Global Enterprise Sdn Bhd: PT Bulunga Surya Mas Pratama	11
Golden Plantation Tbk: PT Mitra Jaya Agro Palm	14
Low Yat: PT Prima Bahagiapermai Sejati	17
Makin: PT Cipta Karsa Kahuripan	20
QL Resources Sdn Bhd: PT Pipit Mutiara Indah	23
Teladan: PT Teladan Palma Perkasa	26
TSH Resources Bhd: PT Bulungan Citra Agro Persada	29

#### Malaysian Companies

BBC Plantation Sdn Bhd: Almabumi Plantation Sdn Bhd	32
Double Dynasty: DDB Bawan Plantation Sdn Bhd	35
Rimbunan Hijau: Timrest Sdn Bhd	37
Rimbunan Hijau: Rimbunan Sawit Sdn Bhd (Simunjan Estate)	40

### Additional cases identified using filtered GLAD alerts

#### New Cases

Unknown Group: PD Pembangunan Sulut II	43
Unknown Group: PT Kukar Commodities Worldwide	43
Shanghai Xinjiu Chemical Co Ltd: PT Sebaung Sawit Plantation	43
Tripura Group: PT Gawi Bahandep Sawit Mekar	43
Unknown Group: PT Olong Jaya Raya	43
Unknown Group: PT Maudhy Pesthika	43
Esa Yasa Group: PT Manggala Rimba Sejahtera	43
Unknown Group: PT Sentosa Kalimantan Jaya	43
Puncak Niaga Sdn Bhd: Danun Sinar Sdn Bhd (OP Block C)	43
Pelita Holdings Sdn Bhd: Pelita Holdings Sdn Bhd (PJP Pelita Long Ekang OPP)	43

#### Repeat Cases

Puncak Niaga: Danum Jaya Sdn Bhd	44
Tripura Agro Persada Group: PT Berau Karetindo Lestari	44
Henan Jiujiu Chemical Co Ltd: PT Palem Segar Lestari (Smallholder area)	44

### Sources for supply chain information:

Supply chain information included in Rapid Response reports is based on the latest public versions of mill disclosures, recent export data and grievance logs. Mighty Earth encourages companies to send updated versions of mill disclosures as soon as they become available and to share any decision to suspend relations with a given group/company listed in those mill disclosures; please send to [rapidresponse@mightyearth.org](mailto:rapidresponse@mightyearth.org).

## Table of Contents (cont.)

### Additional Cases Identified Using Filtered GLAD Alerts

#### Repeat Cases (continued)

Shin Yang: Dataran Linau OP (SY) (Lot 1 Block 14 Murum LD)	44
Shanghai Xinjui Chemical Co Ltd: PT Sebaung Sawit Plantation (Smallholder)	44
Wings Group: PT Sentosa Sukses Utama	44
Shin Yang: Shin Yang (LPF 0018)	44
Green Yield Pte Ltd: PT Tri Investama	44
Samling: LPF/0007 Samling Jelalong (OP)	44
Unknown Group: Formerly Ekran Bhd	44
Widya Corporation: PT Mulia Inti Perkasa	44
Unknown Group: PT Kayan Plantation	44
Shin Yang: Linau Sinar Sdn Bhd	44
Indo Food (Salim Group): PT Agro Subur Permai	45
Shin Yang: Dataran Seping Sdn Bhd (Adam Oil Palm Estate)	45
Mariya Family: PT Malindo Jaya Diraja (Tanah Bumbu and Tanahlaut district)	45
Palma Serasih Group: PT Global Primatama Mandiri	45
KLK Berhard: PT Menteng Jaya Sawit Perdana	45
Unknown Group: PT Bhakti Usaha Dinamika	45
Korompis family: PT Berau Karetindo Lestari	45
Henan Jiujiu Chemical Co Ltd: PT Palem Segar Lestari	45
Unknown Group: Koperasi Usaha Mandiri	45
Mariya family: PT Malindo Jaya Diraja (Tanahlaut district)	45
Unknown Group: PT Sumber Rahmat Sentosa	45
Unknown Group: PT Ichiko Agro Lestari	45
Wings Group: PT Indopenta Sejahtera Abadi	45
Unknown Group: PT Artanusa Agrindo	45
Makin Group: PT Mekar Karya Kahuripan	46
Samling: Samling Reforestation (Bintulu) Sdn Bhd: LPF/0008 Marudi estate	46
Pelita Holding Sdn Bhd: Pelita Ilham Sdn Bhd	46
Lee Ling Timber Group: Lima Jaya Timber Sdn Bd (LPF/0038)	46
Samling: LPF/0007 Jelalong OP (Glenealy) Part 1	46
Lee Ling Timber Group: Lima Jaya Timber Sdn Bhd (Limbang)	46
Unknown Group: Titanium management Sdn Bhd (Part 2)	46
Woodman: Woodman Group (Baram estate, part of LPF/0004)	46

## Table of Contents (cont.)

### Additional Cases Identified Using Filtered GLAD Alerts

#### Repeat Cases (continued)

Kwantas: Kwantas Corporation	46
Kwantas: Miracle Harvest Sdn Bhd	46
Woodman: Woodman Group (Adong estate, part of LPF/0004)	46
Unknown Group: Telliana Enterprise Sdn Bhd	46

*The work of Mighty Earth is supported by Waxman Strategies. Waxman Strategies' work on forest conservation is funded in part by Aidenvironment and the National Wildlife Federation. Waxman is required under 22 U.S.C. § 614 to disclose that this material is distributed on behalf of the aforementioned organization, working under grant from the Norwegian Agency for Development Cooperation. Additional information is on file with the Department of Justice, Washington, D.C.*

# Group: Dhanistha Surya Nusantara

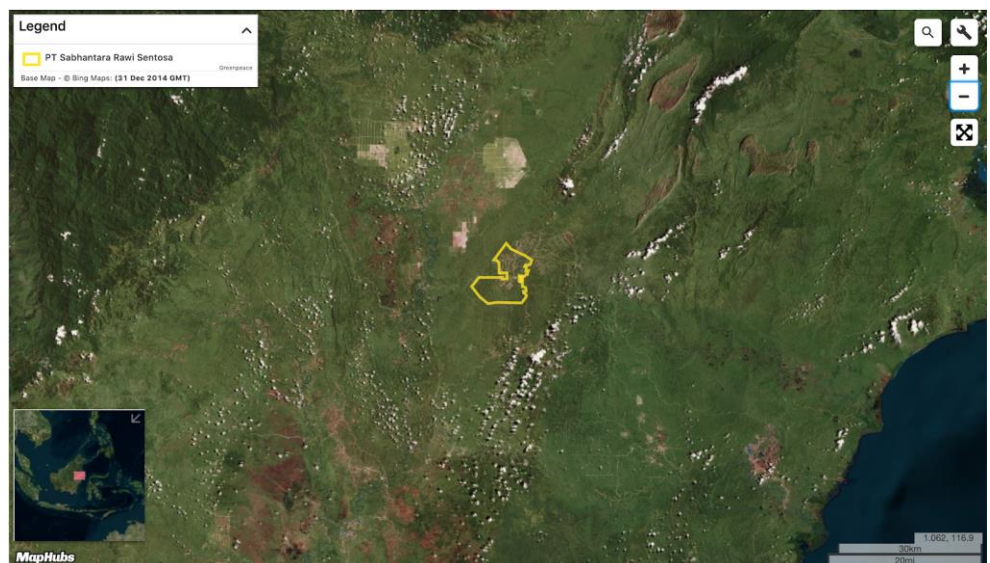
## PT Sabhantara Rawi Sentosa

Concession location: (0.929, 117.031)

### Deforestation and/or peat development

Report	Deforestation (ha)	Peat development (ha)	Peat forest development (ha)	Clearance prep/Stacking lines (ha)	Time period
Report 21	146	-	-	-	February 28 – October 25, 2019

Satellite imagery (see below) shows that between February 28, 2019 and October 25, 2019 a total of 146 hectares of forest were cleared in the PT Sabhantara Rawi Sentosa concession. (Imagery © 2019 Planet Labs Inc.)

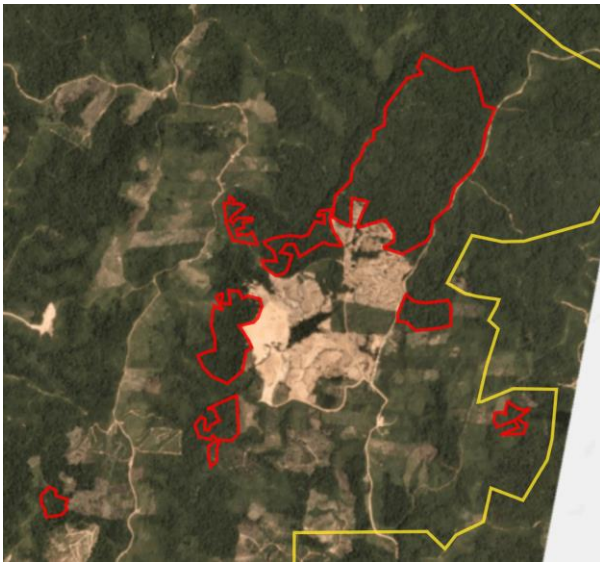




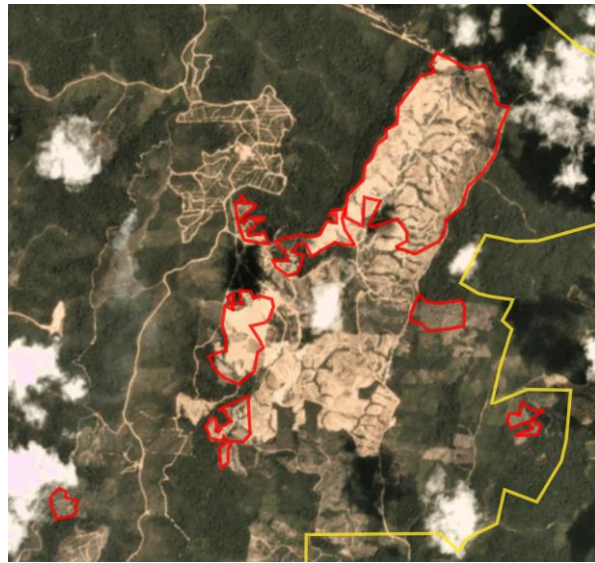
## Alert Imagery (before and after satellite images)

Clearance location: (0.94, 117.043)

Date: February 28, 2019

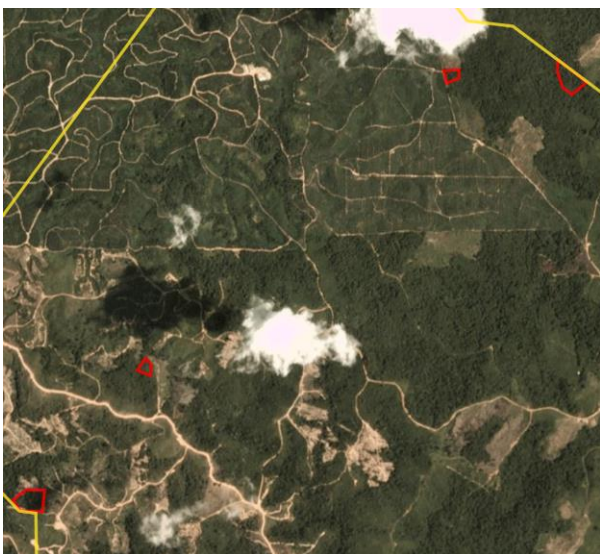


Date: October 25, 2019



Clearance location: (0.948, 117.004)

Date: February 28, 2019



Date: October 25, 2019



## Ownership Information

PT Sabhantara Rawi Sentosa is part of the Dhanistha Surya Nusantara Group.<sup>1</sup>

<sup>1</sup>. Notary Act for PT Sabhantara Rawi Sentosa.

## Supply Chain Information

Supply Chain Links: Traders	AAK	ADM	Bunge	Cargill	Fuji Oil	KLK
PT Sabhantara Rawi Sentosa						
<b>Dhanistha Surya Nusantara</b>	x	x	x	x	x	x

Supply Chain Links: Traders	Louis Dreyfus	Musim Mas	Olam	Sime Darby	Wilmar
PT Sabhantara Rawi Sentosa					
<b>Dhanistha Surya Nusantara</b>	x	x	x	x	x

Supply Chain Links: Consumer Brands	Avon	Colgate-Palmolive	FrieslandCampina	General Mills	Hershey	Johnson & Johnson	Kellogg's
PT Sabhantara Rawi Sentosa							
<b>Dhanistha Surya Nusantara</b>	x	x	x	x	x	x	x

Supply Chain Links: Consumer Brands	Mars	Mondelez	Nestle	PepsiCo	P&G	Reckitt Benckiser	Unilever
PT Sabhantara Rawi Sentosa							
<b>Dhanistha Surya Nusantara</b>	x	x	x	x	x	x	x

## Group: First Resources

### PT Ketapang Agro Lestari

Concession location: (-0.876,115.89)

#### Deforestation and/or peat development

Report	Deforestation (ha)	Peat development (ha)	Peat forest development (ha)	Clearance prep/Stacking lines (ha)	Time period
Report 21	8	-	-	-	August 1 – October 24, 2019

Satellite imagery (see below) shows that between August 1, 2019 and October 24, 2019 a total of 8 hectares of forest were cleared in the PT Ketapang Agro Lestari concession. (Imagery © 2019 Planet Labs Inc.)

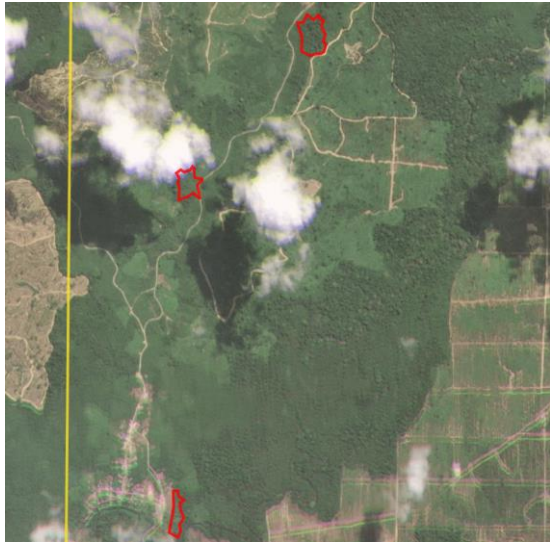




## Alert Imagery (before and after satellite images)

Clearance location: (-0.947, 115.871)

Date: August 1, 2019



Date: October 24, 2019



## Ownership Information

PT Ketapang Agro Lestari is part of the First Resources Group.<sup>2</sup>

2. First Resources, Annual Report, 2018. [www.first-resources.com/upload/file/20190404/20190404085117\\_29052.pdf](http://www.first-resources.com/upload/file/20190404/20190404085117_29052.pdf)

## Supply Chain Information

Supply Chain Links: Traders	ADM	Bunge	First Resources	KLK	Olam	Sime Darby	Wilmar
PT Ketapang Agro Lestari							
<b>First Resources</b>	<b>x</b>	<b>x</b>	<b>x</b>	<b>x</b>	<b>x</b>	<b>x</b>	<b>x</b>

Supply Chain Links: Consumer Brands	Avon	Colgate-Palmolive	Friesland Campina	General Mills	Hershey	Kellogg's
PT Ketapang Agro Lestari		x				
<b>First Resources</b>	<b>x</b>	<b>x</b>	<b>x</b>	<b>x</b>	<b>x</b>	<b>x</b>

Supply Chain Links: Consumer Brands	Mars	Mondelez	Nestle	P&G	PepsiCo	Unilever
PT Ketapang Agro Lestari	x	x	x	x		x
<b>First Resources</b>	<b>x</b>	<b>x</b>	<b>x</b>	<b>x</b>	<b>x</b>	<b>x</b>

# Group: Global Enterprise Sdn Bhd

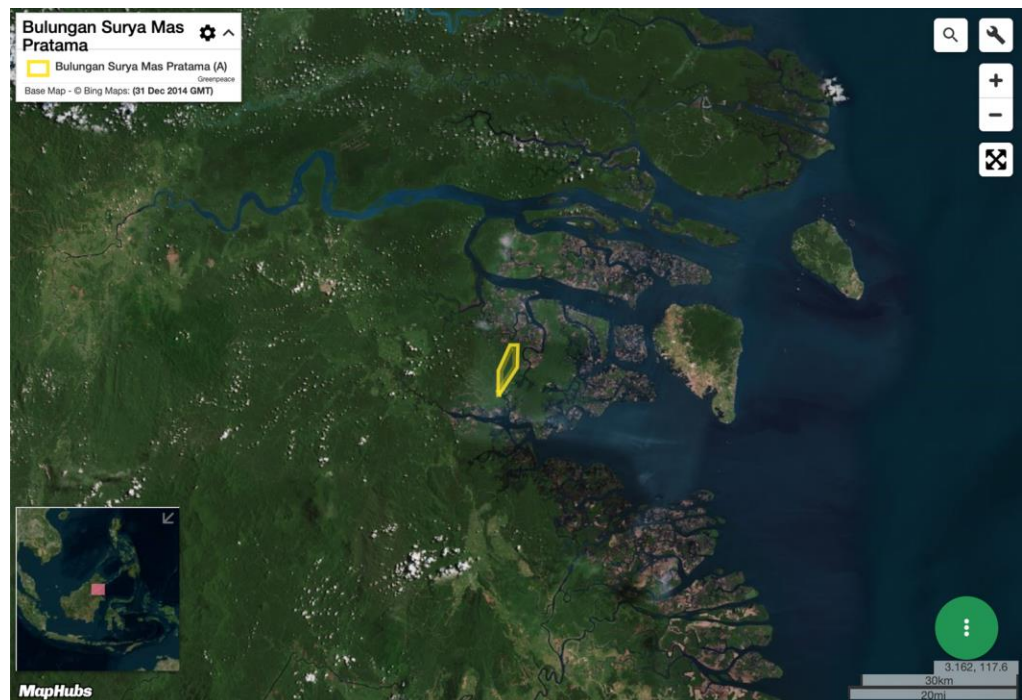
## PT Bulungan Surya Mas Pratama

Concession location: (3.366, 117.274)

### Deforestation and/or peat development

Report	Deforestation (ha)	Peat development (ha)	Peat forest development (ha)	Clearance prep/Stacking lines (ha)	Time period
Report 21	17	-	-		Jan 6 - October 11, 2019

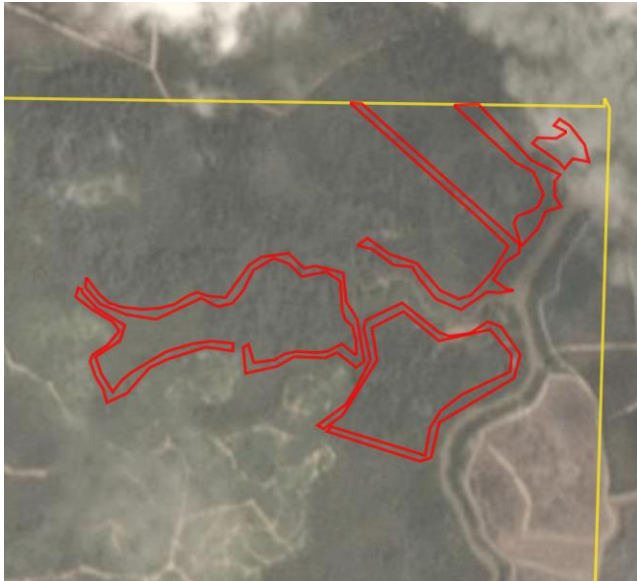
Satellite imagery (see below) shows that between January 6, 2019 – October 11, 2019 a total of 17 hectares of forest were cleared in the PT Bulungan Surya Mas Pratama. (Imagery © 2019 Planet Labs Inc.)



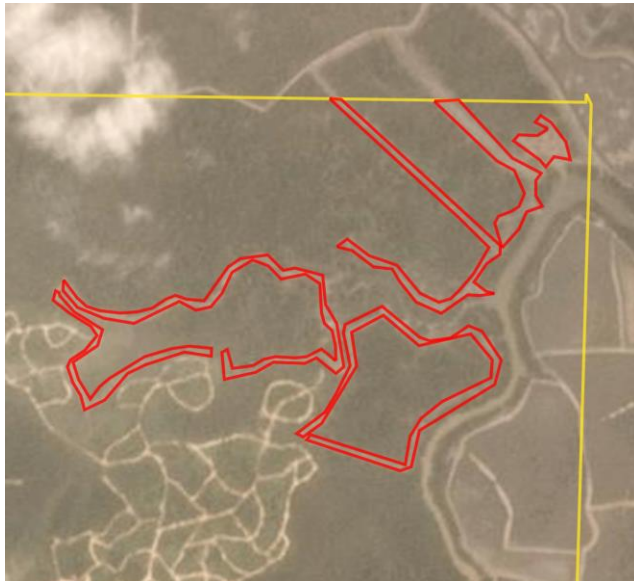
### Alert Imagery (before and after satellite images)

Clearance location: (-1.955, 110.299)

Date: January 6, 2019



Date: October 11, 2019



Clearance location: (3.366, 117.274)

Date: January 6, 2019



Date: October 11, 2019



### Ownership Information

PT Bulungan Surya Mas Pratama is part of Global Resources Sdn Bhd.<sup>3</sup>

3. Notary Act for PT Bulungan Surya Pratama, and related holding companies

## Supply Chain Information

Supply Chain Links: Traders	AAK	ADM	Bunge	Cargill	Fuji Oil	IOI	KLK
PT Bulungan Surya Mas Pratama							
<b>Global Enterprise</b>	<b>x</b>	<b>x</b>	<b>x</b>	<b>x</b>	<b>x</b>	<b>x</b>	<b>x</b>

Supply Chain Links: Traders	Louis Dreyfus	Mewah	Olam	Wilmar
PT Bulungan Surya Mas Pratama				
<b>Global Enterprise</b>	<b>x</b>	<b>x</b>	<b>x</b>	<b>x</b>

Supply Chain Links: Consumer Brands	Avon	Colgate-Palmolive	FrieslandCampina	General Mills	Hershey	Johnson & Johnson	Kellogg's
PT Bulungan Surya Mas Pratama							
<b>Global Enterprise</b>	<b>x</b>	<b>x</b>	<b>x</b>	<b>x</b>	<b>x</b>	<b>x</b>	<b>x</b>

Supply Chain Links: Consumer Brands	Mars	Mondelez	Neste Oil	Nestle	PepsiCo	P&G	Reckitt Benckiser	Unilever
PT Bulungan Surya Mas Pratama								
<b>Global Enterprise</b>	<b>x</b>	<b>x</b>	<b>x</b>	<b>x</b>	<b>x</b>	<b>x</b>	<b>x</b>	<b>x</b>



# Group: Golden Plantation Tbk

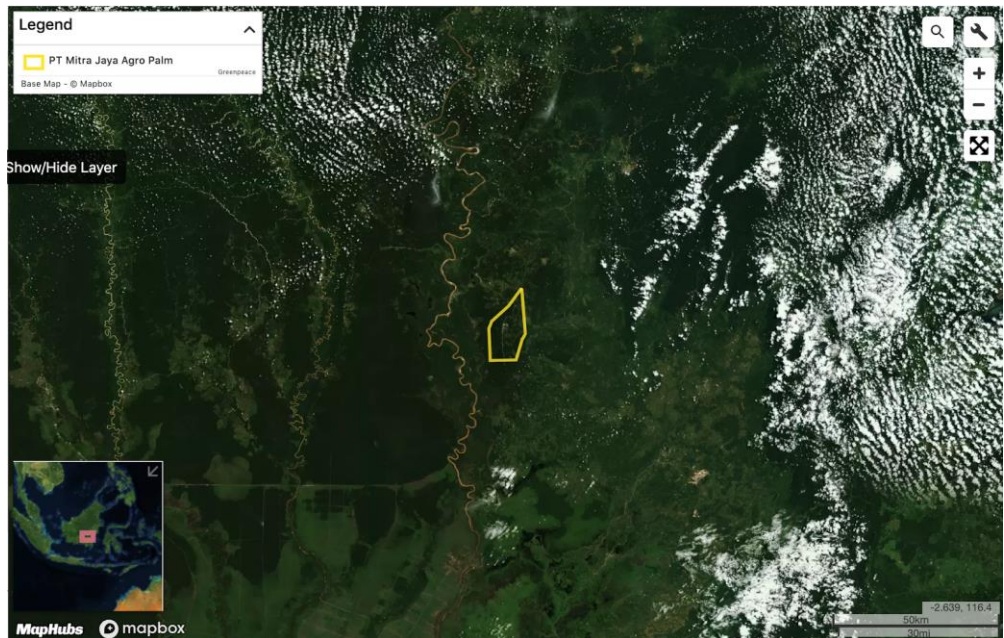
## PT Mitra Jaya Agro Palm

Concession location: (-1.812, 114.98)

### Deforestation and/or peat development

Report	Deforestation (ha)	Peat development (ha)	Peat forest development (ha)	Clearance prep/Stacking lines (ha)	Time period
Report 21	3	-	122	30	April 22 – September 23, 2019

Satellite imagery (see below) shows that between April 22, 2019 and September 23, 2019 a total of 3 hectares of forest (mineral soils) were cleared, 122 hectares of peat forest were cleared, and 30 hectares were prepared for clearance in the PT Mitra Jaya Agro Palm concession. (Imagery © 2019 Planet Labs Inc.).



## Alert Imagery (before and after satellite images)

Clearance location: (-1.797, 114.94)

Date: April 22, 2019

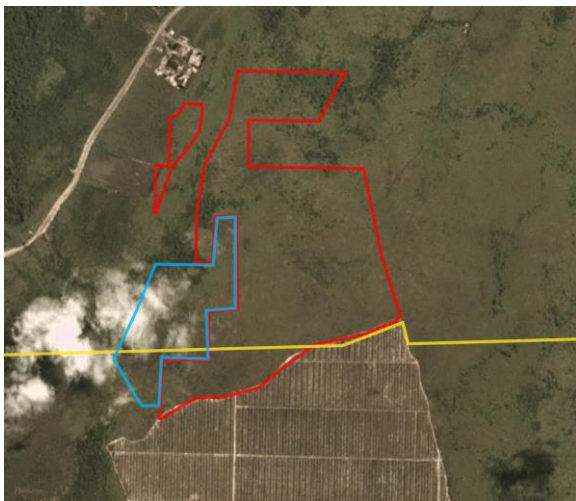


Date: September 23, 2019



Clearance location: (-1.897, 114.943)

Date: April 22, 2019



Date: September 23, 2019



## Ownership Information

PT Mitra Jaya Agro Palm is part of Golden Plantation Tbk.<sup>4</sup>

4. Golden Plantation Tbk, Annual Report 2017. [www.goldenplantation.com/upload/investor\\_relation/annual-report-2017.pdf](http://www.goldenplantation.com/upload/investor_relation/annual-report-2017.pdf)

## Supply Chain Information

Supply Chain Links: Traders	ADM	Fuji Oil	GAR
PT Mitra Jaya Agro Palm			
<b>Golden Plantation Tbk</b>	x	x	x

Supply Chain Links: Consumer Brands	FrieslandCampina	General Mills	Hershey	Johnson & Johnson	Kellogg's	Mars
PT Mitra Jaya Agro Palm						
<b>Golden Plantation Tbk</b>	x	x	x	x	x	x

Supply Chain Links: Consumer Brands	Mondelez	Neste Oil	Nestle	PepsiCo	Reckitt Benckiser	Unilever
PT Mitra Jaya Agro Palm						
<b>Golden Plantation Tbk</b>	x	x	x	x	x	x

## Group: Low Yat

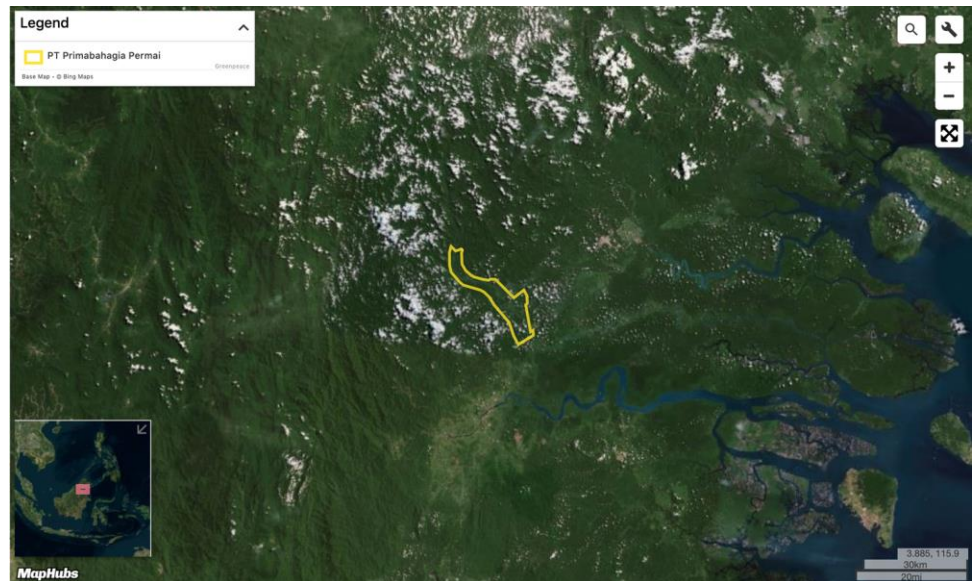
### PT Prima Bahagiapermai Sejati

Concession location: (3.895, 116.619)

#### Deforestation and/or peat development

Report	Deforestation (ha)	Peat development (ha)	Peat forest development (ha)	Clearance prep/Stacking lines (ha)	Time period
Report 21	12	-	-	-	March 31 – Sept. 5, 2019

Satellite imagery (see below) shows that between March 31, 2019 and September 5, 2019 a total of 12 hectares of forest were cleared in the PT Prima Bahagiapermai Sejati concession. (Imagery © 2019 Planet Labs Inc.)

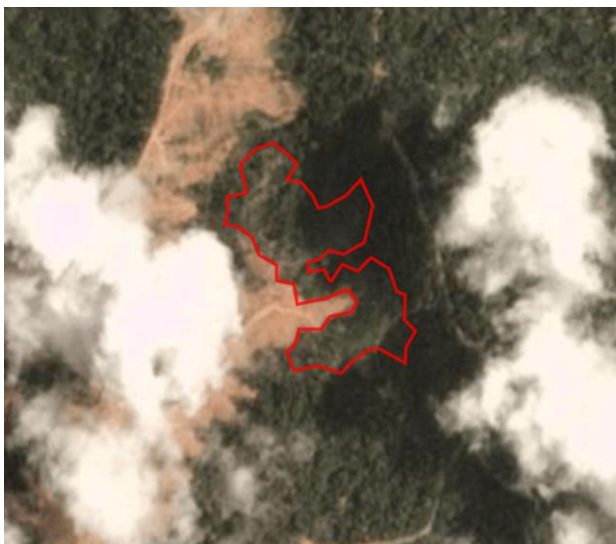




## Alert Imagery (before and after satellite images)

Clearance location: (-3.819, 116.686)

Date: March 31, 2019



Date: September 5, 2019



## Ownership Information

PT Prima Bahagiapermai Sejati is owned through Low Yat Holdings Sdn Bhd, which is held by the Low family members.<sup>5</sup>

## Case notes

This concession was previously included in Rapid Response report 20 under the name of PT Primabahagia Permai, which was the name attributed to the concession based on data originating from the East Kalimantan Plantation Agency. This case has now been removed from report 20 and included in this report with the correct group affiliation and supply chain links.

---

5. Notary Act for PT Prima Bahagiapermai Sejati, Global Hectare Holding Pte Ltd, Asia Pacific Land Bhd and Low Yat Holdings (M) Sdn Bhd.



## Supply Chain Information

Supply Chain Links: Traders	Apical	Fuji Oil	Louis Dreyfus
PT Prima Bahagiapermai Sejati			
<b>Low Yat</b>	<b>x</b>	<b>X</b>	<b>X</b>

Supply Chain Links: Consumer Brands	Kellogg's	Mondelez	Neste Oil	PepsiCo
PT Prima Bahagiapermai Sejati				
<b>Low Yat</b>	<b>x</b>	<b>x</b>	<b>x</b>	<b>x</b>

## Group: Makin

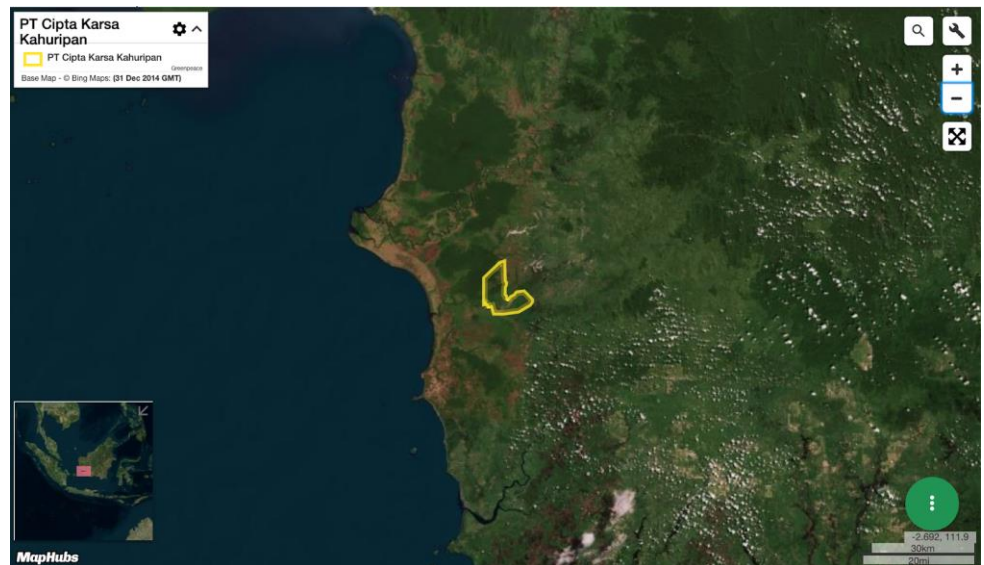
### PT Cipta Karsa Kahuripan

Concession location: (-1.991, 110.298)

#### Deforestation and/or peat development

Report	Deforestation (ha)	Peat development (ha)	Peat forest development (ha)	Clearance prep/Stacking lines (ha)	Time period
Report 21	79	-	-		February 25 – September 6, 2019

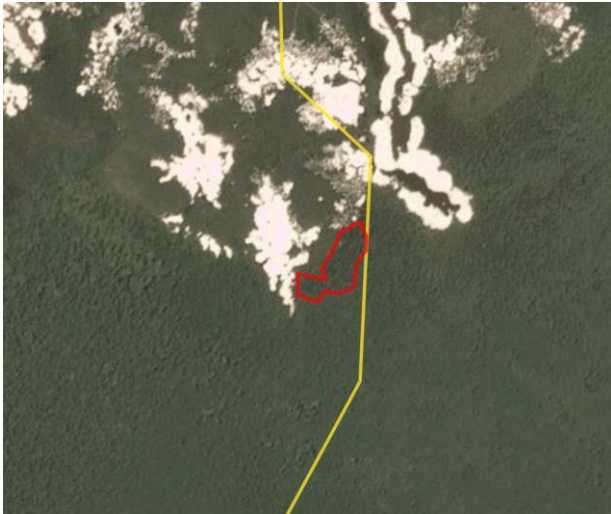
Satellite imagery (see below) shows that between February 25, 2019 and September 6, 2019 a total of 79 hectares of forest were cleared in the PT Cipta Karsa Kahuripan concession. (Imagery © 2019 Planet Labs Inc.)



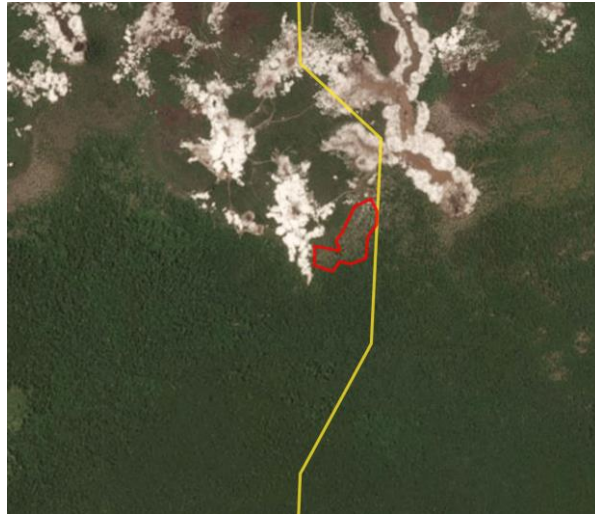
## Alert Imagery (before and after satellite images)

Clearance location: (-1.955, 110.299)

Date: February 25, 2019



Date: September 6, 2019

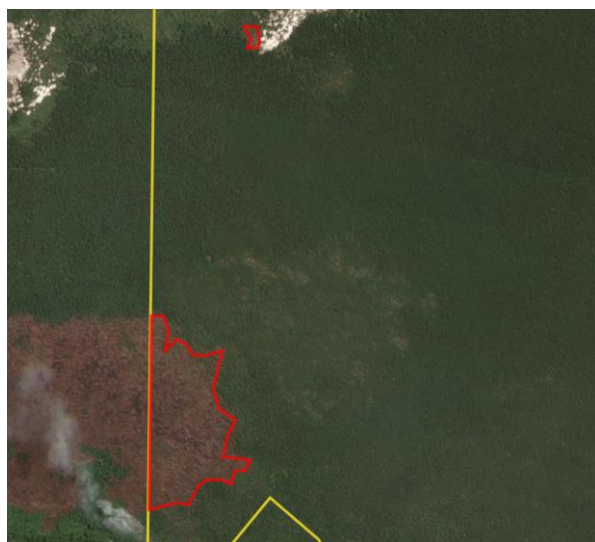


Clearance location: (-2.001, 110.245)

Date: February 25, 2019



Date: September 6, 2019



## Ownership Information

PT Cipta Karsa Kahuripan is part of the Makin Group.<sup>6</sup>

---

6. Notary Act for PT PT Cipta Karsa Kahuripan

## Supply Chain Information

Supply Chain Links: Traders	AAK	ADM	Apical	Bunge	Cargill	Fuji Oil	GAR	KLK
PT Cipta Karsa Kahuripan								
<b>Makin Group</b>	x	x	x	x	x	x	x	x

Supply Chain Links: Traders	Louis Dreyfus	Musim Mas	Olam	Pacific Inter-Link	Wilmar
PT Cipta Karsa Kahuripan					
<b>Makin Group</b>	x	x	x	x	x

Supply Chain Links: Consumer Brands	Avon	Colgate-Palmolive	FrieslandCampina	General Mills	Hershey	Johnson & Johnson	Kellogg's
PT Cipta Karsa Kahuripan							
<b>Makin Group</b>	x	x	x	x	x	x	

Supply Chain Links: Consumer Brands	Mars	Mondelez	Neste Oil	Nestle	PepsiCo	P&G	Reckitt Benckiser	Unilever
PT Cipta Karsa Kahuripan								
<b>Makin Group</b>	x	x	x	x	x	x	x	x

# Group: QL Resources Bhd

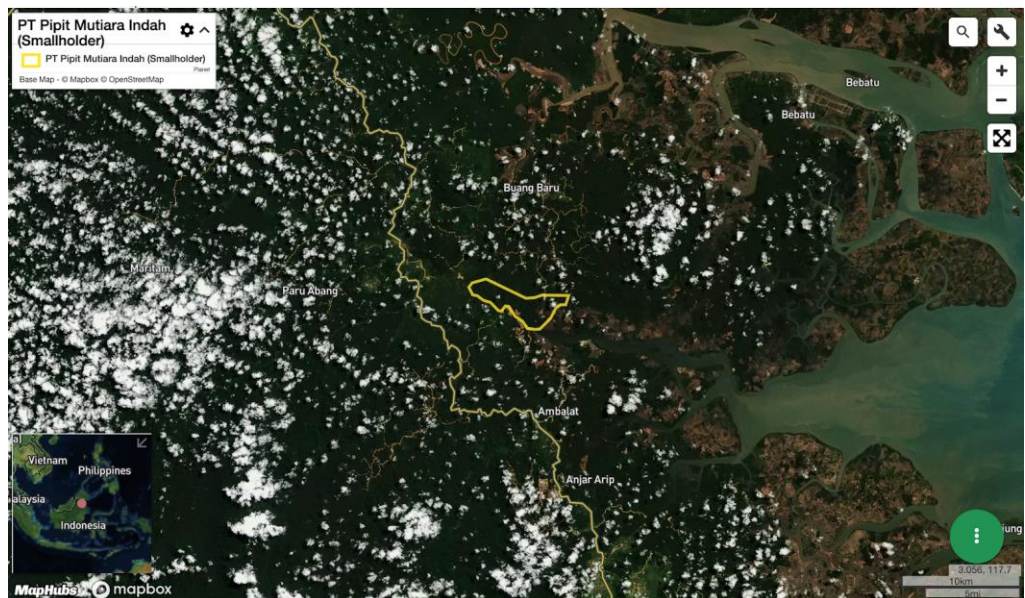
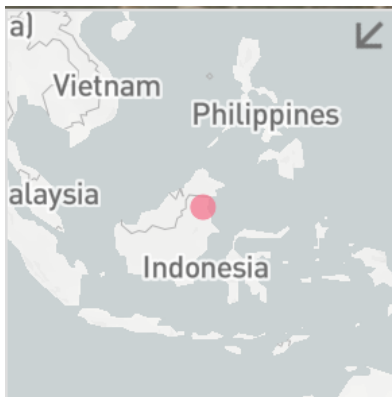
## PT Pipit Mutiara Indah

Concession location: (3.276, 117.173)

### Deforestation and/or peat development

Report	Deforestation (ha)	Peat development (ha)	Peat forest development (ha)	Clearance prep/Stacking lines (ha)	Time period
Report 21	50	-	-	-	January 3 – October 20, 2019

Satellite imagery (see below) shows that between January 3, 2019 and October 20, 2019 a total of 50 hectares were prepared for clearing (stacking lines) in the PT Pipit Mutiara Indah concession. (Imagery © 2019 Planet Labs Inc.)





## Alert Imagery (before and after satellite images)

Clearance location: (3.287, 117.129)

Date: January 3, 2019

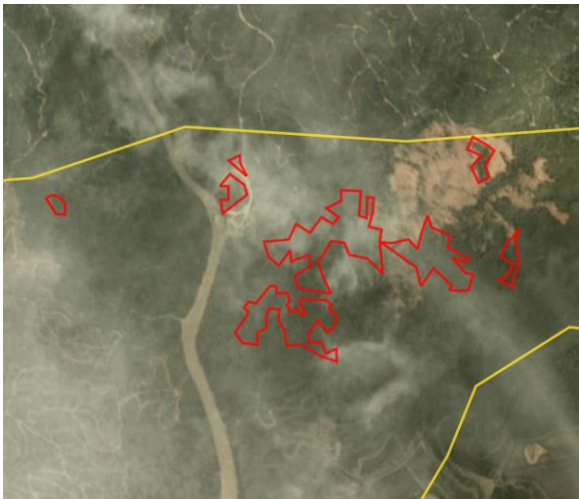


Date: October 20, 2019



Clearance location: (3.279, 117.175)

Date: January 3, 2019



Date: October 20, 2019



## Ownership Information

PT Pipit Mutiara Indah is part of the QL Resources Bhd.<sup>7</sup>

7. QL Resources Bhd, Annual Report 2019. <http://ql.listedcompany.com/misc/ar2019.pdf>

## Supply Chain Information

Supply Chain Links: Traders	AAK	ADM	KLK	Wilmar
PT Pipit Mutiara Indah	x	x	x	
<b>QL Resources Bhd</b>	<b>x</b>	<b>x</b>	<b>x</b>	<b>x</b>

Supply Chain Links: Consumer Brands	Avon	Colgate-Palmolive	FrieslandCampina	General Mills	Hershey	Johnson & Johnson	Kellogg's
PT Pipit Mutiara Indah	x	x	x	x	x	x	x
<b>QL Resources Bhd</b>	<b>x</b>	<b>x</b>	<b>x</b>	<b>x</b>	<b>x</b>	<b>x</b>	<b>x</b>

Supply Chain Links: Consumer Brands	Mars	Mondelez	Neste Oil	Nestle	P&G	PepsiCo	Reckitt Benckiser	Unilever
PT Pipit Mutiara Indah	x	x	x		x	x	x	x
<b>QL Resources Bhd</b>	<b>x</b>	<b>x</b>	<b>x</b>	<b>x</b>	<b>x</b>	<b>x</b>	<b>x</b>	<b>x</b>

## Group: Teladan

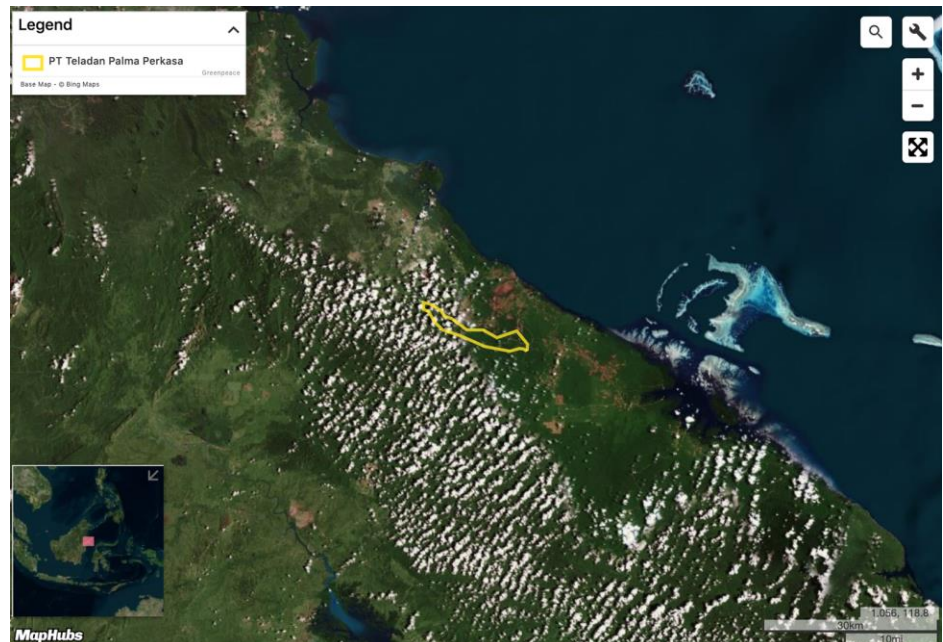
PT Teladan Palma Perkasa

Concession location: (1.529, 118.105)

### Deforestation and/or peat development

Report	Deforestation (ha)	Peat development (ha)	Peat forest development (ha)	Clearance prep/Stacking lines (ha)	Time period
Report 21	67	-	-	-	June 30 – September 4, 2019

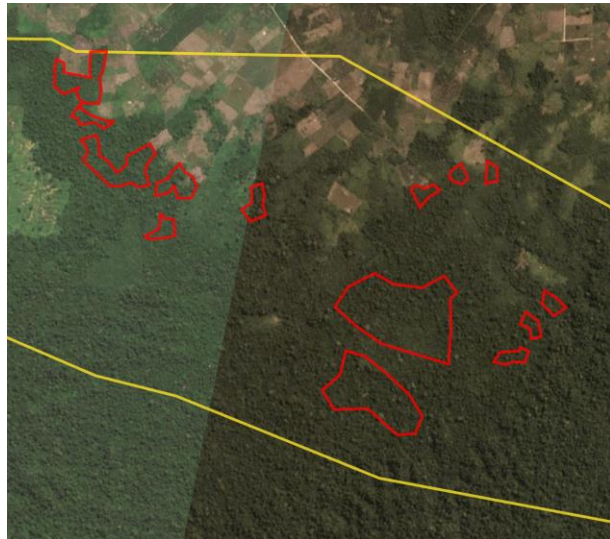
Satellite imagery (see below) shows that between June 30, 2019 and September 4, 2019 a total of 67 hectares of forest were cleared in the PT Teladan Palma Perkasa concession. (Imagery © 2019 Planet Labs Inc.).



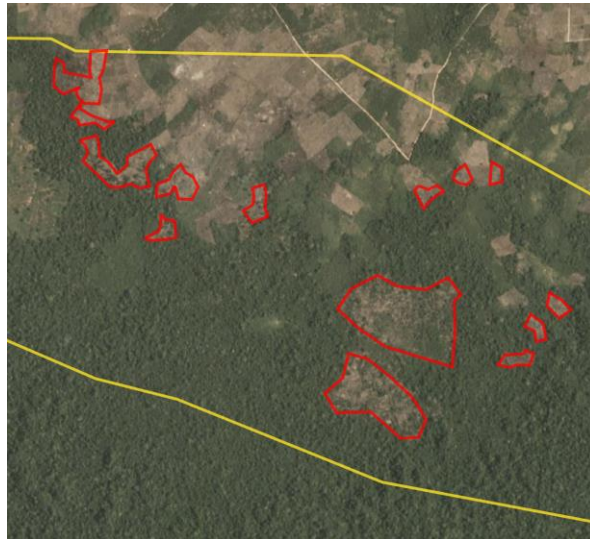
## Alert Imagery (before and after satellite images)

Clearance location: (1.513, 118.129)

Date: June 30, 2019



Date: September 4, 2019



## Ownership Information

PT Teladan Palma Perkasa is part of the Teladan Group.<sup>8</sup>

This concession was included in Rapid Response report 20. However, the data was incomplete at the time of publication. Hence, this case is being included in full within this report.

8. Teladan website, <https://teladan-resources.com/our-business/agro-resources>; [www.teladanprima.com](http://www.teladanprima.com)

## Supply Chain Information

Supply Chain Links: Traders	AAK	ADM	Cargill	KLK	Wilmar
PT Teladan Palma Perkasa					
<b>Teladan</b>	<b>x</b>	<b>x</b>	<b>x</b>	<b>x</b>	<b>x</b>

Supply Chain Links: Consumer Brands	Avon	Colgate-Palmolive	FrieslandCampina	General Mills	Hershey	Johnson & Johnson
PT Teladan Palma Perkasa						
<b>Teladan</b>	<b>x</b>	<b>x</b>	<b>x</b>	<b>x</b>	<b>x</b>	<b>x</b>

Supply Chain Links: Consumer Brands	Kellogg's	Mars	Nestle	P&G	PepsiCo	Reckitt Benckiser	Unilever
PT Teladan Palma Perkasa							
<b>Teladan</b>	<b>x</b>	<b>x</b>	<b>x</b>	<b>x</b>	<b>x</b>	<b>x</b>	<b>x</b>



# Group: TSH Resources Bhd

## PT Bulungan Citra Agro Persada

Concession location: (2.477, 117.887)

### Deforestation and/or peat development

Report	Deforestation (ha)	Peat development (ha)	Peat forest development (ha)	Clearance prep/Stacking lines (ha)	Time period
Report 21	57	-	-	-	June 20 – October 19, 2019

Satellite imagery (see below) shows that between June 20, 2019 and October 19, 2019 a total of 57 hectares of forest were cleared in the PT Bulungan Citra Agro Persada concession. (Imagery © 2019 Planet Labs Inc.)



**Alert Imagery (before and after satellite images)**

Clearance location: (2.437, 117.906)

Date: June 20, 2019

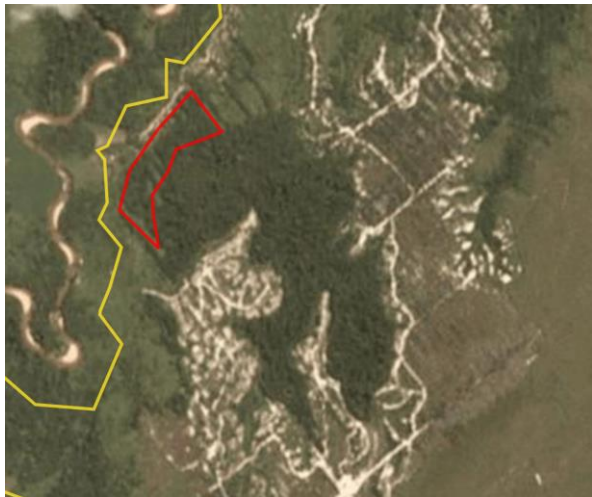


Date: October 19, 2019



Clearance location: (2.486, 117.863)

Date: June 20, 2019



Date: October 19, 2019



Clearance location: (2.514, 117.888)

Date: June 20, 2019



Date: October 19, 2019



## Ownership Information

PT Bulungan Citra Agro Persada is part of the TSH Resources Bhd.<sup>9</sup>

## Supply Chain Information

Supply Chain Links: Traders	ADM	Fuji Oil	KLK	Wilmar
PT Bulungan Citra Agro Persada				
<b>TSH Resources Bhd</b>	<b>x</b>	<b>x</b>	<b>x</b>	<b>x</b>

Supply Chain Links: Consumer Brands	Avon	Colgate-Palmolive	FrieslandCampina	Hershey	Johnson & Johnson	Mars
PT Bulungan Citra Agro Persada						
<b>TSH Resources Bhd</b>	<b>x</b>	<b>x</b>	<b>x</b>	<b>x</b>	<b>x</b>	<b>x</b>

Supply Chain Links: Consumer Brands	Neste Oil	Nestle	P&G	Reckitt Benckiser
PT Bulungan Citra Agro Persada				
<b>TSH Resources Bhd</b>	<b>x</b>	<b>x</b>	<b>x</b>	<b>x</b>

9. TSH Resources Bhd, Annual Report 2018. [www.tsh.com.my/annual-report-2018/tsh-ar2018/?dl=4a41d12e6e](http://www.tsh.com.my/annual-report-2018/tsh-ar2018/?dl=4a41d12e6e)



# Group: BBC Plantation Sdn Bhd

## Almabumi Plantation Sdn Bhd

Concession location: (3.037, 113.066)

### Deforestation and/or peat development

Report	Deforestation (ha)	Peat development (ha)	Peat forest development (ha)	Clearance prep/Stacking lines (ha)	Time period
Report 19	6	-	-	-	March 18 – August 10, 2019

Satellite imagery (see below) shows that between March 18, 2019 and August 10, 2019 a total of 6 hectares of forest were cleared in the Almabumi Plantation Sdn Bhd concession. (Imagery © 2019 Planet Labs Inc.)



## Alert Imagery (before and after satellite images)

Clearance location: (2.999, 113.049)

Date: May 20, 2019 (all images below)



Date: July 31, 2019 (all images below)



## Ownership Information

Almabumi Plantation Sdn Bhd is part of the BBC Plantation Sdn Bhd.<sup>10</sup>

This concession was incorrectly attributed to Alam Bumi Sdn Bhd in Rapid Response report 19 and has therefore been revised and included in this report. However, Mighty Earth expects that palm oil traders who were linked to this case in report 19 would have picked up this discrepancy in their grievance verification process and therefore should have filed the grievance against BBC Plantation Sdn Bhd instead of Alam Bumi Sdn Bhd.

10. Company profile, Company Commission of Malaysia; Palm oil traders' mill lists naming BBC Palm Oil Mill Sdn Bhd



## Supply Chain Information

Supply Chain Links: Traders	AAK	ADM	Bunge	Cargill	Fuji Oil
Almabumi Plantation Sdn Bhd					
<b>BBC Plantation Sdn Bhd</b>	x	x	x	x	x

Supply Chain Links: Traders	KLK	Neste Oil	Olam	Sime Darby	Wilmar
Almabumi Plantation Sdn Bhd					
<b>BBC Plantation Sdn Bhd</b>	x	x	x	x	x

Supply Chain Links: Consumer Brands	Avon	Colgate-Palmolive	FrieslandCampina	General Mills	Hershey	Johnson & Johnson	Kellogg's
Almabumi Plantation Sdn Bhd							
<b>BBC Plantation Sdn Bhd</b>	x	x	x	x	x	x	x

Supply Chain Links: Consumer Brands	Mars	Mondelez	Nestle	PepsiCo	P&G	PZ Cussons	Reckitt Benckiser	Unilever
Almabumi Plantation Sdn Bhd								
<b>BBC Plantation Sdn Bhd</b>	x	x	x	x	x	x	x	x

## Group: Double Dynasty

### DDB Bawan Plantation Sdn Bhd

Concession location: (coordinates not currently known)

#### Deforestation and/or peat development

Report	Deforestation (ha)	Peat development (ha)	Peat forest development (ha)	Clearance prep/Stacking lines (ha)	Time period
Report 21	-	Not assessed	Not assessed	-	Not assessed

Double Dynasty has recently started developing peatland areas within the DDB Bawan Plantation Sdn Bhd concession in the Bawan area of Sarawak (Lot 35 Block 13 Bawan District).

### Case notes

DDB Bawan Plantation Sdn Bhd has recently been reported to have acquired a permit to plant 34,000 hectares of Native Community Rights (NCR)-owned peatland in Mukah, Sarawak. The indigenous communities have filed a report to the police, which states:

*'On 28/06/2019 at approximately 0900 hrs at Sungai Bawan Balingian Temuda Land owned by Tr. Muli Anak Lingir, Tr. Juti Anak Maga, Umpu Anak Blaja and other residents of several longhouses in Sg Bawan Balingian area have discovered the land has been invaded by DDB Bawan Plantation Sdn Bhd. Fruit gardens, herbs, rubber gardens, fish nets (moss), traps and forest resources such as rattan, medicines and so on have been destroyed by DDB Bawan Plantation Sdn Bhd making calverts and several rivers in Sungai Bawan were closed by DDB Bawan Plantation Sdn Bhd. Bawan has been closed by DDB Bawan Plantation Sdn Bhd. Residents of longhouses have lost access to orchards and searched for sources of life in the Bawan River. This report is for further action by the parties.'*

Further details and images can be view in the blog by [The Sarawak Report](#).

### Ownership Information

DDB Bawan Plantation Sdn Bhd is owned by the Double Dynasty Group.<sup>11</sup>

11. Company profile for DDB Bawan Plantation Sdn Bhd, Companies Commission Malaysia.

## Supply Chain Information

Supply Chain Links: Traders	KLK	Louis Dreyfus	Olam	Sime Darby
DDB Bewan Plantation Sdn Bhd				
<b>Double Dynasty</b>	x	x	x	x

Supply Chain Links: Consumer Brands	Avon	Colgate-Palmolive	Friesland Campina	General Mills	Hershey	Johnson & Johnson	Kellogg's
DDB Bewan Plantation Sdn Bhd							
<b>Double Dynasty</b>	x	x	x	x	x	x	x

Supply Chain Links: Consumer Brands	Mars	Mondelez	Nestle	P&G	PepsiCo	PZ Cussons	Reckitt Benckiser	Unilever
DDB Bewan Plantation Sdn Bhd								
<b>Double Dynasty</b>	x	x	x	x	x	x	x	x

# Group: Rimbunan Hijau

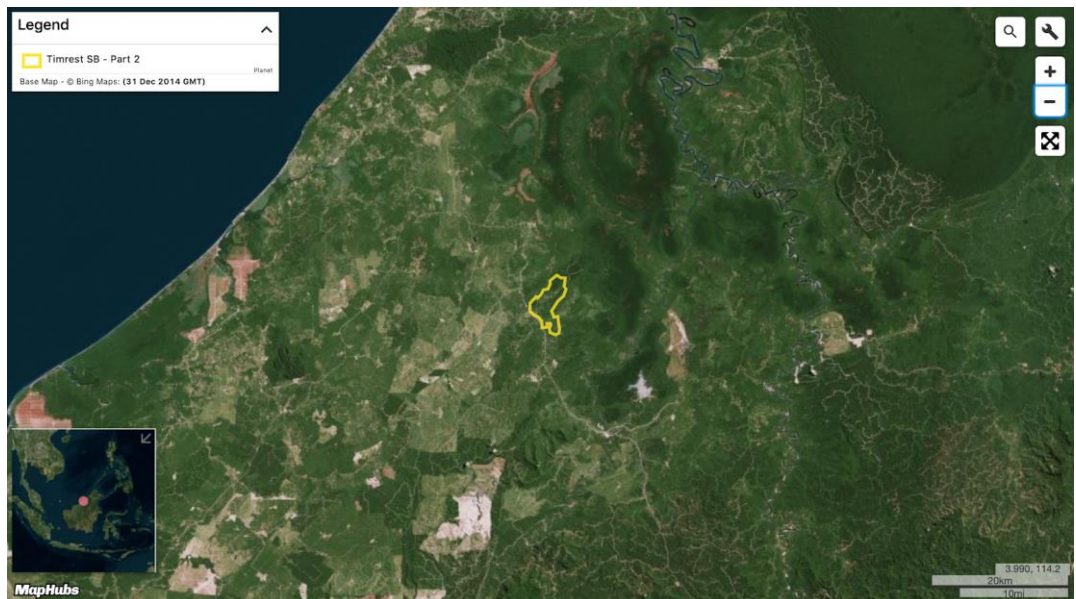
Timrest Sdn Bhd

Concession location: (3.879, 114.125)

## Deforestation and/or peat development

Report	Deforestation (ha)	Peat development (ha)	Peat forest development (ha)	Clearance prep/Stacking lines (ha)	Time period
Report 21	15	-	-	-	May 11 – Sept. 24, 2019

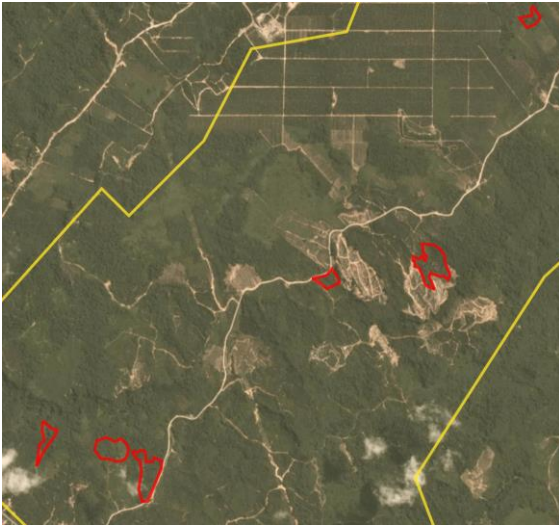
Satellite imagery (see below) shows that between May 11, 2019 and September 24, 2019 a total of 15 hectares of forest were cleared in the Timrest Sdn Bhd concession. (Imagery © 2019 Planet Labs Inc.)



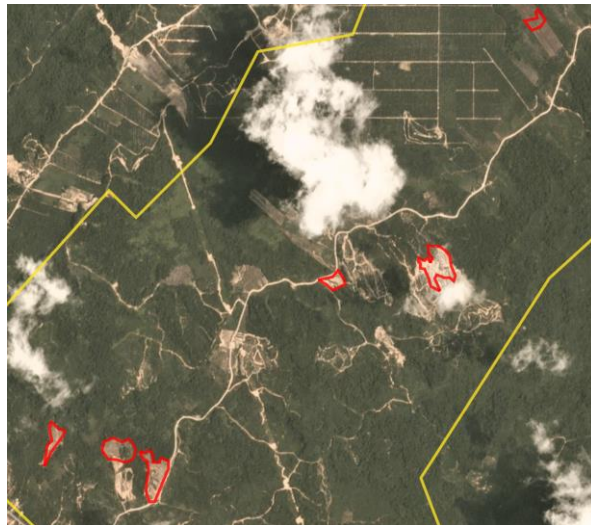
## Alert Imagery (before and after satellite images)

Clearance location: (3.879, 114.125)

Date: May 11, 2019



Date: September 24, 2019



## Ownership Information

Timrest Sdn Bhd is part of the Rimbunan Hijau Group, through Rimbunan Sawit Bhd.  
Timrest Sdn Bhd for Timbrest Sdn Bhd.<sup>12</sup>

---

12. Company profile from Company Commission Malaysia



## Supply Chain Information

Supply Chain Links: Traders	AAK	ADM	BLD	Cargill	IOI	Olam	Sime Darby	Wilmar
Timrest Sdn Bhd								
<b>Rimbunan Hijau</b>	x	x	x	x	x	x	x	x

Supply Chain Links: Consumer Brands	Avon	Colgate-Palmolive	FrieslandCampina	General Mills	Hershey	Johnson & Johnson	Kellogg's
Timrest Sdn Bhd							
<b>Rimbunan Hijau</b>	x	x	x	x	x	x	x

Supply Chain Links: Consumer Brands	Mars	Neste Oil	Nestle	PepsiCo	P&G	PZ Cussons	Reckitt Benckiser	Unilever
Timrest Sdn Bhd								
<b>Rimbunan Hijau</b>	x	x	x	x	x	x	x	x

# Group: Rimbunan Hijau

Rimbunan Sawit Sdn Bhd (Simunjan Estate)

Concession location: (1.267, 110.868)

## Deforestation and/or peat development

Report	Deforestation (ha)	Peat development (ha)	Peat forest development (ha)	Clearance prep/Stacking lines (ha)	Time period
Report 21	12	-	-	-	Sept. 22, 2018 – April 17, 2019

Satellite imagery (see below) shows that between September 22, 2018 and April 17, 2019 a total of 12 hectares of forest were cleared in the Rimbunan Sawit Sdn Bhd (Simunjan Estate) concession. (Imagery © 2019 Planet Labs Inc.)



## Alert Imagery (before and after satellite images)

Clearance location: (1.267, 110.868)

Date: September 22, 2018



Date: April 17, 2019



## Ownership Information

Rimbunan Sawit Sdn Bhd (Simunjan Estate) is part of the Rimbunan Hijau Group.<sup>13</sup>

13. Rimbunan Sawit website. [www.rsb.com.my/plantation.html](http://www.rsb.com.my/plantation.html)

## Supply Chain Information

Supply Chain Links: Traders	AAK	ADM	BLD	Cargill	IOI	Olam	Sime Darby	Wilmar
Rimbunan Sawit Sdn Bhd (Simunjan Estate)								
<b>Rimbunan Hijau</b>	x	x	x	x	x	x	x	x

Supply Chain Links: Consumer Brands	Avon	Colgate-Palmolive	FrieslandCampina	General Mills	Hershey	Johnson & Johnson	Kellogg's
Rimbunan Sawit Sdn Bhd (Simunjan Estate)							
<b>Rimbunan Hijau</b>	x	x	x	x	x	x	x

Supply Chain Links: Consumer Brands	Mars	Neste Oil	Nestle	PepsiCo	P&G	PZ Cussons	Reckitt Benckiser	Unilever
Rimbunan Sawit Sdn Bhd (Simunjan Estate)								
<b>Rimbunan Hijau</b>	x	x	x	x	x	x	x	x

## Additional cases identified using screened GLAD alerts

The following cases have been identified through screened GLAD alerts (see methodology below). As these cases are either repeat cases from previous Rapid Response reports or where Mighty Earth did not determine any supply chain links for these concessions/Groups, no Planet image analysis was conducted for these cases to save resources.

**Mighty Earth expects that palm oil traders conduct their own due diligence to determine if they are exposed to such companies/Groups. Further, traders without supply chain links to these cases should put them on their 'no buy' lists.**

Methodology:

For Indonesia, GLAD alerts are screened using the Indonesia Ministry of Forestry and the Environment land cover dataset for 2017 which classifies existing palm oil plantations and primary and secondary forest. Hence, only GLAD alerts in primary and secondary forest according to that dataset are included.

For Malaysia, GLAD alerts are screened to exclude known plantation areas using the Global Forest Watch (GFW) plantations dataset. This automatically eliminates the most common false positives, i.e. the replanting of palm that existed prior to the year 2000.

New Cases				
Concession/ license area	Group ownership	Area covered by screened GLAD alerts (ha)	Time period	Supply chain connection identified
PD Pembangunan Sulut II	Unknown	~204	Sept. 16 – Oct. 15, 2019	None
PT Kukar Commodities Worldwide	Unknown	~43	Sept. 16 – Oct. 15, 2019	None
PT Sebaung Sawit Plantation	Shanghai Xinjiu Chemical Co Ltd	~29	Sept. 16 – Oct. 15, 2019	None
PT Gawi Bahandep Sawit Mekar	Triputra	~19	Sept. 16 – Oct. 15, 2019	None
PT Olong Jaya Raya	Unknown	~16	Sept. 16 – Oct. 15, 2019	None
PT Maudhy Pesthika	Unknown	~14	Sept. 16 – Oct. 15, 2019	None
PT Manggala Rimba Sejahtera	Esa Yasa	~12	Sept. 16 – Oct. 15, 2019	None
PT Sentosa Kalimantan Jaya	Unknown	~11	Sept. 16 – Oct. 15, 2019	None
Danun Sinar Sdn Bhd (OP Block C)	Puncak Niaga Sdn Bhd	~5	Sept. 16 – Oct. 15, 2019	None
Pelita Holdings Sdn Bhd (PJP Pelita Long Ekang OPP)	Pelita Holdings Sdn Bhd	~3	Sept. 16 – Oct. 15, 2019	None



## Repeat Cases

Concession license area	Group/ownership	Area covered by screened GLAD alerts (ha)	Time period	Rapid Response reports related to each case*
Danum Jaya Sdn Bhd	Puncak Niaga	155.88	Sept. 16 – Oct. 15, 2019	Reports 14, 16, 19, and 20
PT Berau Karetindo Lestari	Triputra Agro Persada Group	111.51	Sept. 16 – Oct. 15, 2019	Reports 2, 16, 19, and 20
PT Palembang Segar Lestari (Smallholder area)	Henan Jiujiu Chemical Co. Ltd	84.69	Sept. 16 – Oct. 15, 2019	Reports 5, 7, 12, 13, 16, 18, and 20
Dataran Linau OP (SY) (Lot 1 Block 14 Murum LD)	Shin Yang	78.45	Sept. 16 – Oct. 15, 2019	Reports 17, 18, 19, and 20
PT Sebaung Sawit Plantation (Smallholder)	Shanghai Xinjui Chemical Co Ltd	65.76	Sept. 16 – Oct. 15, 2019	Reports 8, 12, 13, 16, and 20
PT Sentosa Sukses Utama	Wings Group	43.1	Sept. 16 – Oct. 15, 2019	Reports 16 and 20
Shin Yang (LPF 0018)	Shin Yang	38.91	Sept. 16 – Oct. 15, 2019	Reports 18, 19, and 20
PT Tri Investama	Green Yield Pte Ltd	38.56	Sept. 16 – Oct. 15, 2019	Report 20
LPF/0007 Samling Jelalong (OP)	Samling	38.43	Sept. 16 – Oct. 15, 2019	Reports 15, 16, 18, 19, and 20
Formerly Ekran Bhd	Unknown Group	36.89	Sept. 16 – Oct. 15, 2019	Reports 19 and 20
PT Mulia Inti Perkasa	Widya Corporation	31.26	Sept. 16 – Oct. 15, 2019	Reports 6, 15, and 20
PT Kayan Plantation	Unknown Group	25.22	Sept. 16 – Oct. 15, 2019	Reports 15, 17, 18, 19, and 20
Linau Sinar Sdn Bhd	Shin Yang	25.07	Sept. 16 – Oct. 15, 2019	Reports 13 and 20

\*Rapid Response reports available on Mighty Earth's Rapid Response website page, [linked here](#).

## Repeat Cases (continued)

Concession license area	Group/ownership	Area covered by screened GLAD alerts (ha)	Time period	Rapid Response reports related to each case*
PT Agro Subur Permai	Indo Food (Salim Group)	22.84	Sept. 16 – Oct. 15, 2019	Report 20
Dataran Seping Sdn Bhd (Adam Oil Palm Estate)	Shin Yang	20.5	Sept. 16 – Oct. 15, 2019	Report 20
PT Malindo Jaya Diraja (Tanah Bumbu and Tanahlaut district)	Mariya Family	20.02	Sept. 16 – Oct. 15, 2019	Reports 13, 15, 19
PT Global Primatama Mandiri	Palma Serasih Group	19.05	Sept. 16 – Oct. 15, 2019	Report 13
PT Menteng Jaya Sawit Perdana	KLK Berhard	19.03	Sept. 16 – Oct. 15, 2019	Reports 18 and 19
PT Bhakti Usaha Dinamika	Unknown Group	18.43	Sept. 16 – Oct. 15, 2019	Report 14
PT Berau Karetindo Lestari	Korompis family	17.41	Sept. 16 – Oct. 15, 2019	Reports 2, 16, 19, and 20
PT Palembang Segar Lestari	Henan Jiujiu Chemical Co. Ltd	16.31	Sept. 16 – Oct. 15, 2019	Reports 5, 7, 12, 13, 16, 18, and 20
Koperasi Usaha Mandiri	Unknown Group	14.54	Sept. 16 – Oct. 15, 2019	Reports 17, 19, and 20
PT Malindo Jaya Diraja (Tanahlaut district)	Mariya Family	14.53	Sept. 16 – Oct. 15, 2019	Reports 13, 15, 19
PT Sumber Rahmat Sentosa	Unknown Group	12.7	Sept. 16 – Oct. 15, 2019	Report 19
PT Ichiko Agro Lestari	Unknown Group	12.55	Sept. 16 – Oct. 15, 2019	Reports 14, 17, 19, and 20
PT Indopenta Sejahtera Abadi	Wings Group	12.38	Sept. 16 – Oct. 15, 2019	Reports 19 and 20
PT Artanusa Agrindo	Unknown Group	12.37	Sept. 16 – Oct. 15, 2019	Reports 18 and 19

\*Rapid Response reports available on Mighty Earth's Rapid Response website page, [linked here](#).

## Repeat Cases (continued)

Concession license area	Group/ownership	Area covered by screened GLAD alerts (ha)	Time period	Rapid Response reports related to each case*
PT Mekar Karya Kahuripan	Makin Group	12.08	Sept. 16 – Oct. 15, 2019	Report 17
Samling Reforestation (Bintulu) Sdn Bhd: LPF/0008 Marudi estate	Samling	9.58	Sept. 16 – Oct. 15, 2019	Reports 13, 17, 19, and 20
Pelita Ilham Sdn Bhd	Pelita Holding Sdn Bhd	5.79	Sept. 16 – Oct. 15, 2019	Report 17
Lima Jaya Timber Sdn Bhd (LPF/0038)	Lee Ling Timber Group	4.56	Sept. 16 – Oct. 15, 2019	Report 18
LPF/0007 Jelalong OP (Glenealy ) Part 1	Samling	4.56	Sept. 16 – Oct. 15, 2019	Reports 15, 16, 18, 19, and 20
Lima Jaya Timber Sdn Bhd (Limbang)	Lee Ling Timber Group	4.4	Sept. 16 – Oct. 15, 2019	Report 18
Titanium Management Sdn Bhd (Part 2)	Unknown	4.02	Sept. 16 – Oct. 15, 2019	Reports 18 and 19
Woodman Group (Baram Estate, part of LPF/0004)	Woodman	2.55	Sept. 16 – Oct. 15, 2019	Report 18
Kwantas Corporation	Kwantas	2.32	Sept. 16 – Oct. 15, 2019	Report 17
Miracle Harvest Sdn Bhd	Kwantas	2.24	Sept. 16 – Oct. 15, 2019	Report 20
Woodman Group (Adong Estate, part of LPF/0004)	Woodman	2.24	Sept. 16 – Oct. 15, 2019	Reports 17 and 18

\*Rapid Response reports available on Mighty Earth's Rapid Response website page, [linked here](#).