

# Rapid Response

## Palm Oil, Report 18



**August 2019**

Prepared with support from MapHubs

## Table of Contents

### Cases identified using Planet imagery

#### Indonesian Companies

GAMA Group: PT Sumatera Unggul Makmur	4
Golden Plantation Tbk: PT Airlangga Sawit Jaya	7
Pinehill Pacific Bhd: PT Makmur Jaya Malindo	10
Samling: PT Tunas Borneo Plantations	13

#### Malaysian Companies

Rimbunan Hijau: Erajaya Synergy Sdn Bhd (Lassa division, part of LPF/0029)	16
Rimbunan Hijau: Woodijaya Sdn Bhd (Lot 197)	19
Shin Yang/Sarawak Oil Palms Bhd: Shin Yang OP Planting Area (LPF/0018)	22
TH Plantations Bhd: TH Pelata Meludam Sdn Bhd	25
Tradewinds: Trans Kenyaland Sdn Bhd	28
Woodman Group: Baram Estate (Part of LPF/0004)	31

### Additional cases identified using filtered GLAD alerts

#### New Cases

Unknown Group: Cambridge Alliance Sdn Bhd	
Unknown Group: KUD Restu Bersama	34
Lee Ling Timber Group: Lima Jaya Timber Sdn Bhd (Limbang)	34
Lee Ling Timber Group: Lima Jaya Timber Sdn Bhd (LPF/0038 - part 2)	34
Pelita Holdings Sdn Bhd: Pelita Holdings Sdn Bhd (LCDA-OT/9137)	34
First Borneo Group: PT Berkah Sawit Abadi	34
Unknown Group: Selangor Oil Palm Industries Corporation Sdn Bhs	34
Unknown Group: Telliana Enterprise Sdn Bhd	34
Unknown Group: Titanium Management Sdn Bhd (Part 1)	35
Unknown Group: Titanium Management Sdn Bhd (Part 2)	35
Unknown Group: PT Wanapura Agraraksa	35
Unknown Group: PT Inti Palm Sumatra	35
Unknown Group: PT Artanusa Agrindo	35
Unknown Group: PT Multidaya Fortuna	35
Unknown Group: PT Sumber Madu Bukari	35

### Sources for supply chain information: <https://bit.ly/2MfYZo6>

Supply chain information included in Rapid Response reports is based on latest publicly versions of mill disclosures and grievance logs. Mighty Earth encourages companies to send updated versions of mill disclosures as soon as they become available and any decision to suspend supplies with a given group/company listed in those mill disclosures; please send to [rapidresponse@mightyearth.org](mailto:rapidresponse@mightyearth.org).

## Table of Contents (cont.)

### Additional Cases Identified Using Filtered GLAD Alerts

#### Repeat Cases

PT Sawit Sumbermas Sarana Tbk: PT Sawit Mandiri Lestari	36
Mulia Sawit Group: PT Persada Era Agro Kencana	36
Unknown Group: PT Kayan Plantation	36
Yuwang Group: Empresa (M) Sdn Bhd (OT/0351)	36
Shin Yang: Dataran Linau OP (SY) (Lot 1 Block 14 Murum LD)	36
Woodman Group: Woodman Group (Adong Estate, part of LPF/0004)	36
Woodman Group: Woodman Group (Liku Estate, part of LPF/0004)	36
Double Dynasty: Hua Seng Plantation Sdn Bhd	36
Asian Agri (RGE): PT Usaha Sawit Unggul	36
Unknown Group: PT Agro Lintas Nusantara	36
First Borneo Group: PT Wahana Hamparan Hijau	36
Double Dynasty: Mutiara Pelita Genaan Plantation Sdn Bhd	36
Samling: LPF/0006 Samling Lana	36
Samling: LPF/0007 Samling Jelalong (OP)	37
Samling: LPF/0007 Jelalong OP (Glenealy) Part 1	37
Pundi Group: PT Pinang Witmas Abadi	37
Henan Jiujiu Chemical Co. Ltd: PT Palembang Segar Lestari	37
First Borneo Group: PT Borneo Estate Sejahtera	37
TH Plantations Bhd: Ladang Tabung Haji	37
Anglo-Eastern Plantations: PT Kahayan Agro Plantation	37
Salim/IndoGunta: PT Rimbun Sawit Papua	37
Pactra Group: PT Arjuna Utama Sawit (area 1)	37
Pactra Group: PT Arjuna Utama Sawit (area 2)	37

## Group: GAMA Group

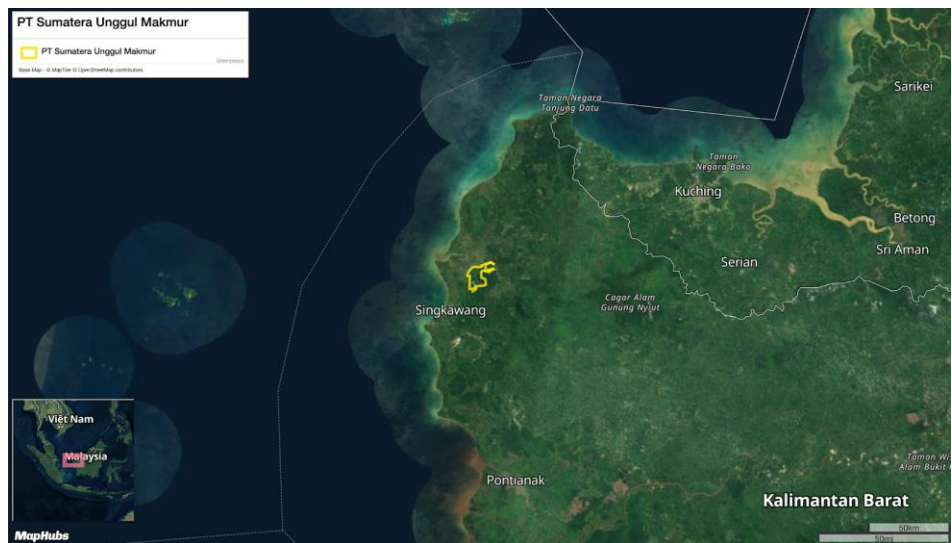
### PT Sumatera Unggul Makmur

Concession location: Latitude 1.07, Longitude 109.164

#### Deforestation and/or peat development

Report	Deforestation (ha)	Peat development (ha)	Peat forest development (ha)	Clearance prep/Stacking lines (ha)	Time period
Report 18	16	-	-	-	May 27 – July 1, 2019

Satellite imagery (see below) shows that between May 27, 2019 and July 1, 2019 a total of 16 hectares of forest were cleared in the PT Sumatera Unggul Makmur concession. (Imagery © 2019 Planet Labs Inc.).



#### Comment on identified deforestation

The deforestation identified in the PT Sumatera Unggul Makmur concession is likely to be encroachment and not related to oil palm development by the GAMA group, but this needs to be investigated and verified. However, as GAMA's [Sustainability Policy](#) commits it to "effectively protect areas of High Conservation Value (HCV) and High Carbon Stock (HCS) within our land bank," any encroachment into HCV/HCS forest areas needs to be actively prevented by the group.

Alert Imagery (before and after satellite images)

Date: May 27, 2019



Date: July 1, 2019



## Ownership Information

PT Sumatera Unggul Makmur is part of the GAMA Group.<sup>1</sup>

---

1. <http://gamaplantation.com/assets/gama-files/pressrelease/100818-aide-announcement.pdf>

## Supply Chain Information

Supply Chain Links: Traders	AAK	ADM	Cargill	Fuji Oil	Louis Dreyfus
PT Sumatera Unggul Makmur					
<b>GAMA Group</b>	<b>x</b>	<b>x</b>	<b>x</b>	<b>x</b>	<b>x</b>

Supply Chain Links: Consumer Brands	Avon	Colgate-Palmolive	General Mills	Hershey	Kellogg's	Mars	Mondelez
PT Sumatera Unggul Makmur							
<b>GAMA Group</b>	<b>x</b>	<b>x</b>	<b>x</b>	<b>x</b>	<b>x</b>	<b>x</b>	<b>x</b>

Supply Chain Links: Consumer Brands	Nestle	PepsiCo	P&G	Unilever
PT Sumatera Unggul Makmur				
<b>GAMA Group</b>	<b>x</b>	<b>x</b>	<b>x</b>	<b>x</b>

## Group: Golden Plantation Tbk

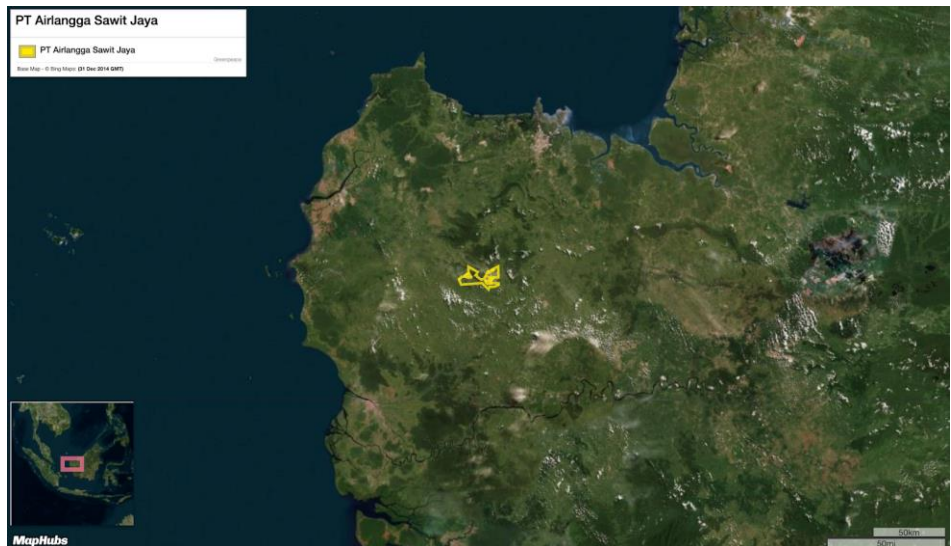
### PT Airlangga Sawit Jaya

Concession location: Latitude 0.73, Longitude 109.89

#### Deforestation and/or peat development

Report	Deforestation (ha)	Peat development (ha)	Peat forest development (ha)	Clearance prep/Stacking lines (ha)	Time period
Report 18	9	-	-	-	May 15 – July 10, 2019

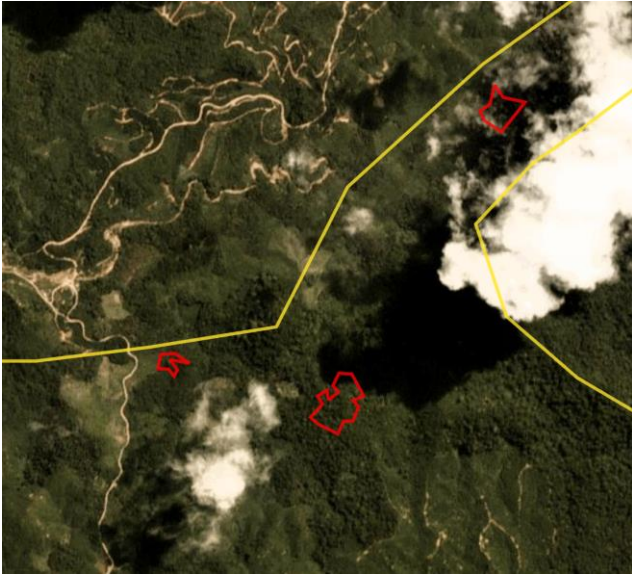
Satellite imagery (see below) shows that between May 15, 2019 and July 10, 2019 a total of 9 hectares of forest were cleared in the PT Airlangga Sawit Jaya concession. (Imagery © 2019 Planet Labs Inc.)





## Alert Imagery (before and after satellite images)

Date: May 15, 2019



Date: July 10, 2019



## Ownership Information

PT Airlangga Sawit Jaya is subsidiary (99.99%) of Golden Plantations Tbk.<sup>2</sup>

2. Golden Plantations Tbk Annual Report (2017), p41 [www.goldenplantation.com/upload/investor\\_relation/annual-report-2017.pdf](http://www.goldenplantation.com/upload/investor_relation/annual-report-2017.pdf)



## Supply Chain Information

Supply Chain Links: Traders	ADM	Fuji Oil	GAR	Olam
PT Airlangga Sawit Jaya				
<b>Golden Plantation Tbk</b>	<b>x</b>	<b>x</b>	<b>x</b>	<b>x</b>

Supply Chain Links: Consumer Brands	General Mills	Kellogg's	Mars	Mondelez	Nestle	Reckitt Benckiser
PT Airlangga Sawit Jaya						
<b>Golden Plantation Tbk</b>	<b>x</b>	<b>x</b>	<b>x</b>	<b>x</b>	<b>x</b>	<b>x</b>

## Group: Pinehill Pacific Bhd

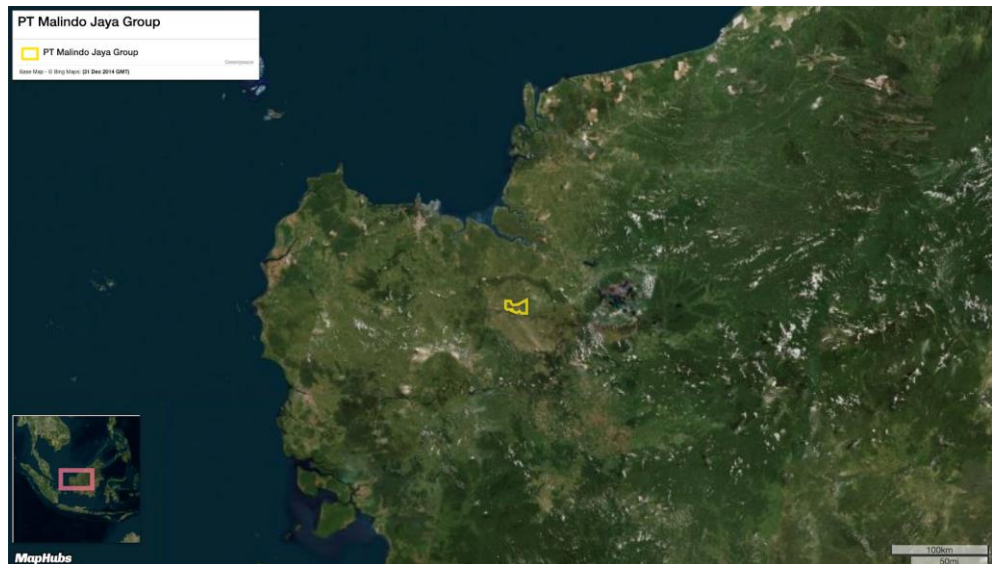
### PT Makmur Jaya Malindo

Concession location: Latitude 0.764, Longitude 111.201

#### Deforestation and/or peat development

Report	Deforestation (ha)	Peat development (ha)	Peat forest development (ha)	Clearance prep/Stacking lines (ha)	Time period
Report 18	21	-	-	-	May 19 – July 5, 2019

Satellite imagery (see below) shows that between May 19, 2019 and July 5, 2019 a total of 21 hectares of forest were cleared in the PT Makmur Jaya Malindo concession. (Imagery © 2019 Planet Labs Inc.)



Alert Imagery (before and after satellite images)

Date: May 19, 2019 (all images below)



Date: July 5, 2019 (all images below)



## Ownership Information

PT Makmur Jaya Malindo is a subsidiary (80%) of Pinehill Pacific Bhd.<sup>4</sup>

## Supply Chain Information

Supply Chain Links: Traders	AAK	ADM	Cargill	Golden Hope Nusantara	IOI
PT Makmur Jaya Malindo					
<b>Pinehill Pacific Bhd</b>	<b>x</b>	<b>x</b>	<b>x</b>	<b>x</b>	<b>x</b>

Supply Chain Links: Traders	KLK	Louis Dreyfus	Mewah	Pacific Inter-Link (PIL) (via Golden Hope Nusantara)	Sime Darby
PT Makmur Jaya Malindo					
<b>Pinehill Pacific Bhd</b>	<b>x</b>	<b>x</b>	<b>x</b>	<b>x</b>	<b>x</b>

Supply Chain Links: Consumer Brands	Avon	Colgate-Palmolive	General Mills	Hershey	Kellogg's
PT Makmur Jaya Malindo					
<b>Pinehill Pacific Bhd</b>	<b>x</b>	<b>x</b>	<b>x</b>	<b>x</b>	<b>x</b>

Supply Chain Links: Consumer Brands	Mars	Mondelez	Nestle	PepsiCo	P&G	Reckitt Benckiser
PT Makmur Jaya Malindo						
<b>Pinehill Pacific Bhd</b>	<b>x</b>	<b>x</b>	<b>x</b>	<b>x</b>	<b>x</b>	<b>x</b>

4. Pinehill Pacific Bhd Annual Report 2018, p81 [http://disclosure.bursamalaysia.com/FileAccess/apbursaweb/download?tid=190097&name=EA\\_DS\\_ATTACHMENTS](http://disclosure.bursamalaysia.com/FileAccess/apbursaweb/download?tid=190097&name=EA_DS_ATTACHMENTS)

## Group: Samling

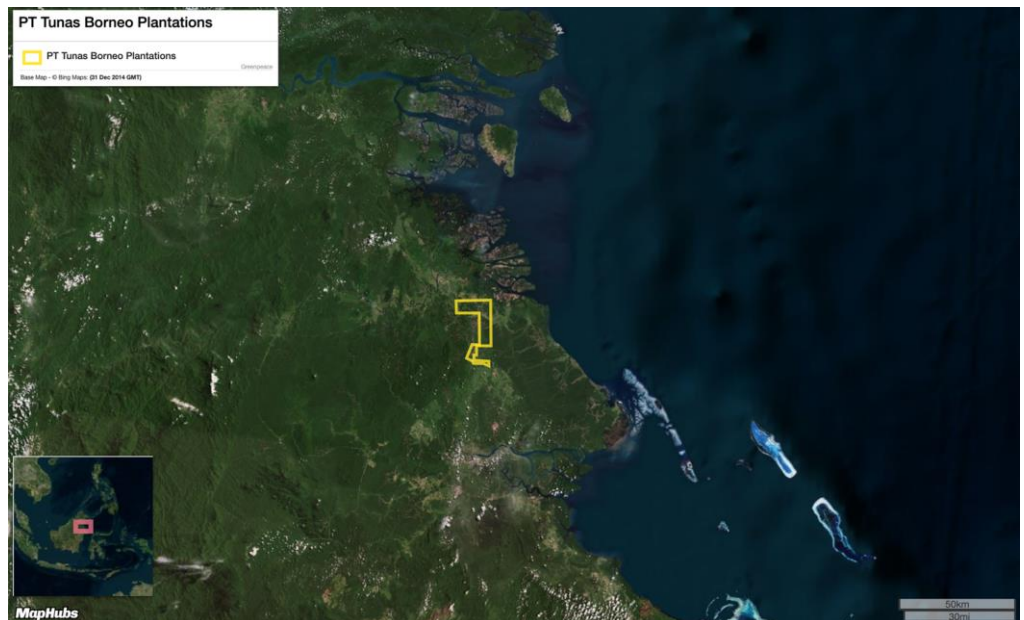
### PT Tunas Borneo Plantations

Concession location: Latitude 2.595, Longitude 117.521

#### Deforestation and/or peat development

Report	Deforestation (ha)	Peat development (ha)	Peat forest development (ha)	Clearance prep/Stacking lines (ha)	Time period
Report 18	13	-	-	-	May 3 - August 3, 2019

Satellite imagery (see below) shows that between May 3, 2019 and August 3, 2019 a total of 13 hectares of forest were cleared in the PT Tunas Borneo Plantations concession. (Imagery © 2019 Planet Labs Inc.)





Alert Imagery (before and after satellite images)

Date: May 3, 2019



Date: August 3, 2019



Date: May 3, 2019



Date: August 3, 2019





## Ownership Information

PT Tunas Borneo Plantations is part of the Samling Group. It is owned indirectly through a subsidiary (99.99%) of Glenealy Plantations Sdn Bhd – ie Puncak Selasih Sdn Bhd.<sup>5</sup>

## Supply Chain Information

Supply Chain Links: Traders	AAK	ADM	Cargill	Fuji Oil	IOI	KLK	Olam	Sime Darby	Wilmar
PT Tunas Borneo Plantations									
<b>Samling Group</b>	x	x	x	x	x	x	x	x	x

Supply Chain Links: Consumer Brands	Avon	Colgate-Palmolive	General Mills	Hershey	Kellogg's	Mars	Mondelez
PT Tunas Borneo Plantations							
<b>Samling Group</b>	x	x	x	x	x	x	x

Supply Chain Links: Consumer Brands	Nestle	PepsiCo	P&G	PZ Cussons	Reckitt Benckiser	Unilever
PT Tunas Borneo Plantations						
<b>Samling Group</b>	x	x	x	x	x	x

5. Notary Act for PT Tunas Borneo Plantations; Company profile for Puncak Selasih Sdn Bhd, Company Commission Malaysia

## Group: Rimbunan Hijau

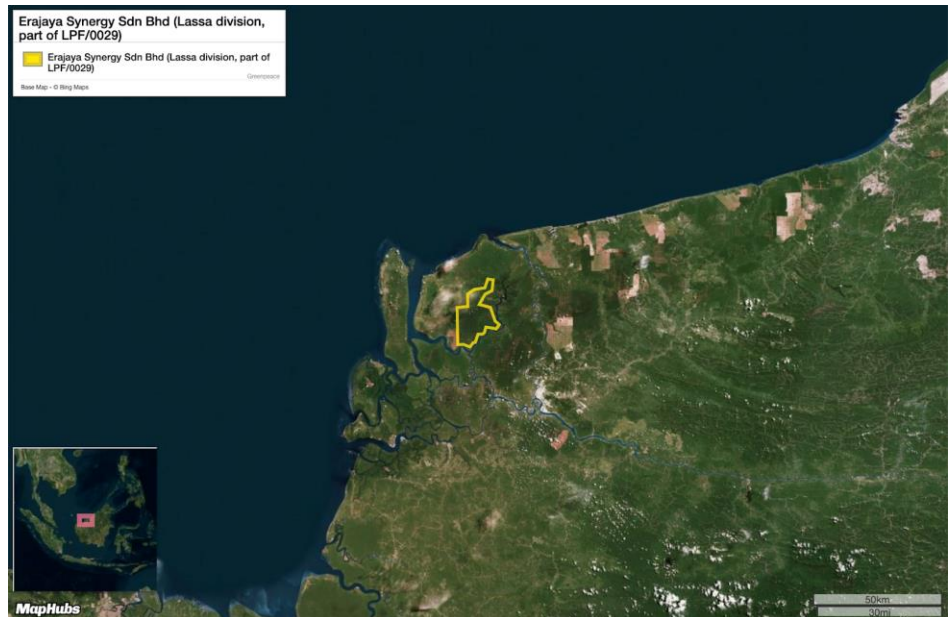
### Erajaya Synergy Sdn Bhd (Lassa division, part of LPF/0029)

Concession location: Latitude 2.57 Longitude, 111.633

#### Deforestation and/or peat development

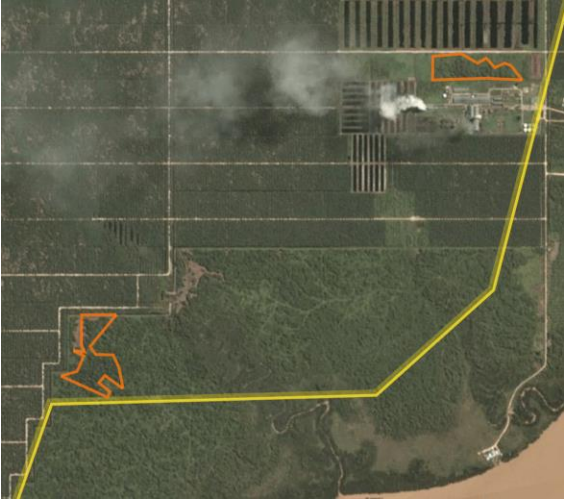
Report	Deforestation (ha)	Peat development (ha)	Peat forest development (ha)	Clearance prep/Stacking lines (ha)	Time period
Report 18	-	16	-	14	May 20 – July 31, 2019

Satellite imagery (see below) shows that between May 20, 2019 and July 31, 2019 a total of 16 hectares of peat were cleared and 14 hectares were prepared for clearance in the Erajaya Synergy Sdn Bhd (Lassa division, part of LPF/0029) concession. (Imagery © 2019 Planet Labs Inc.)



Alert Imagery (before and after satellite images)

Date: May 20, 2019 (all images below)



Date: July 31, 2019 (all images below)



## Ownership Information

Erajaya Synergy Sdn Bhd (Lassa division, part of LPF/0029) is part of the Rimbunan Hijau Group.<sup>6</sup>

## Supply Chain Information

Supply Chain Links: Traders	AAK	ADM	BLD	Bunge	Cargill	Fuji Oil	KLK
Erajaya Synergy Sdn Bhd (Lassa division, part of LPF/0029)							
<b>Rimbunan Hijau</b>	<b>x</b>	<b>x</b>	<b>x</b>	<b>x</b>	<b>x</b>	<b>x</b>	<b>x</b>

Supply Chain Links: Traders	Olam	Sime Darby	Wilmar
Erajaya Synergy Sdn Bhd (Lassa division, part of LPF/0029)			
<b>Rimbunan Hijau</b>	<b>x</b>	<b>x</b>	<b>x</b>

Supply Chain Links: Consumer Brands	Avon	Colgate-Palmolive	General Mills	Hershey	Kellogg's	Mars	Nestle
Erajaya Synergy Sdn Bhd (Lassa division, part of LPF/0029)							
<b>Rimbunan Hijau</b>	<b>x</b>	<b>x</b>	<b>x</b>	<b>x</b>	<b>x</b>	<b>x</b>	<b>x</b>

Supply Chain Links: Consumer Brands	PepsiCo	P&G	PZ Cussons	Reckitt Benckiser
Erajaya Synergy Sdn Bhd (Lassa division, part of LPF/0029)				
<b>Rimbunan Hijau</b>	<b>x</b>	<b>x</b>	<b>x</b>	<b>x</b>

6. SGS MSPO Erajaya Synergy Sdn Bhd Audit Summary Report EN [www.sgs.com/en/certified-clients-and-products/fcm/malaysia/-/media/5e55b1ae6da4421d890ffb9840651e04.ashx](http://www.sgs.com/en/certified-clients-and-products/fcm/malaysia/-/media/5e55b1ae6da4421d890ffb9840651e04.ashx); [www.jayatiasa.net/usr/pagesub.aspx?pgid=46](http://www.jayatiasa.net/usr/pagesub.aspx?pgid=46)

## Group: Rimbunan Hijau

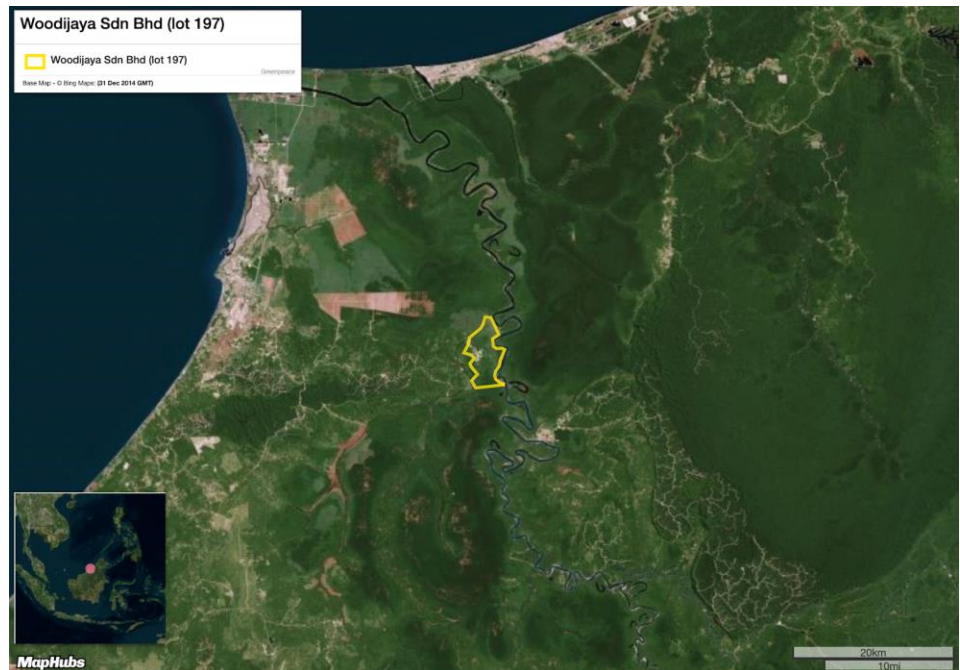
### Woodijaya Sdn Bhd (Lot 197)

Concession location: Latitude 4.272, Longitude 114.264

#### Deforestation and/or peat development

Report	Deforestation (ha)	Peat development (ha)	Peat forest development (ha)	Clearance prep/Stacking lines (ha)	Time period
Report 18	-	4	-		May 25 – August 1, 2019

Satellite imagery (see below) shows that between May 25, 2019 and August 1, 2019 a total of 4 hectares of peat were cleared in the Woodijaya Sdn Bhd (Lot 197) concession. (Imagery © 2019 Planet Labs Inc.)





## Alert Imagery (before and after satellite images)

Date: May 25, 2019



Date: Aug. 1, 2019



## Ownership Information

Woodijaya Sdn Bhd (lot 197) is part of Rimbulan Sawit Bhd (Rimbulan Hiaju Group).<sup>7</sup>

<sup>7</sup>. Company Profile, Companies Commission of Malaysia



## Supply Chain Information

Supply Chain Links: Traders	AAK	ADM	BLD	Bunge	Cargill	Fuji Oil
Woodijaya Sdn Bhd (Lot 197)						
<b>Rimbunan Hijau</b>	x	x	x	x	x	x

Supply Chain Links: Traders	KLK	Olam	Sime Darby	Wilmar
Woodijaya Sdn Bhd (Lot 197)				
<b>Rimbunan Hijau</b>	x	x	x	x

Supply Chain Links: Consumer Brands	Avon	Colgate-Palmolive	General Mills	Hershey	Kellogg's	Mars
Woodijaya Sdn Bhd (Lot 197)						
<b>Rimbunan Hijau</b>	x	x	x	x	x	x

Supply Chain Links: Consumer Brands	Nestle	PepsiCo	P&G	PZ Cussons	Reckitt Benckiser
Woodijaya Sdn Bhd (Lot 197)					
<b>Rimbunan Hijau</b>	x	x	x	x	x

## Group: Shin Yang/ Sarawak Oil Palms Bhd.

### Shin Yang OP Planting Area (LPF/0018)

Concession location: Latitude 2.854, Longitude 114.243

#### Deforestation and/or peat development

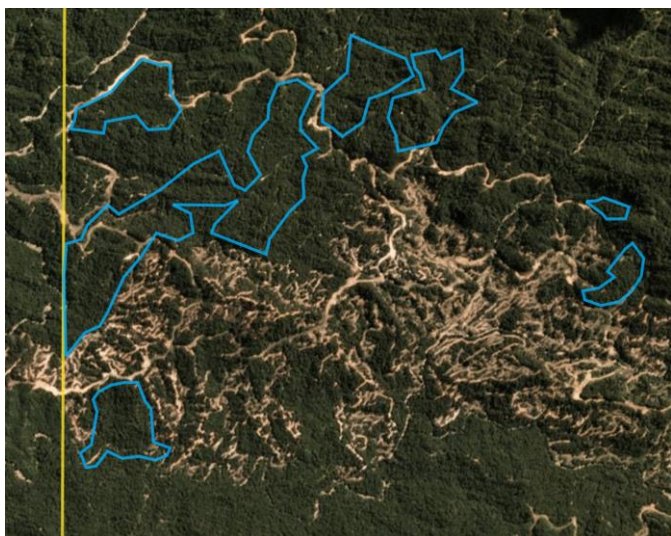
Report	Deforestation (ha)	Peat development (ha)	Peat forest development (ha)	Clearance prep/Stacking lines (ha)	Time period
Report 18	127	-	-	-	June 11 – Aug. 5, 2019

Satellite imagery (see below) shows that between June 11, 2019 and August 5, 2019 a total of 127 hectares were cleared in the Shin Yang OP Planting area (LPF/0018) concession. (Imagery © 2019 Planet Labs Inc.)

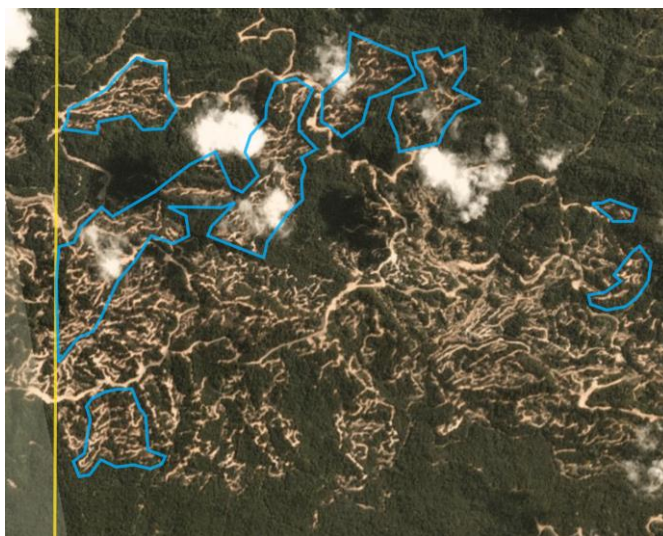


## Alert Imagery (before and after satellite images)

Date: June 11, 2019



Date: August 5, 2019



## Ownership Information

Shin Yang (OP Planting area, part of LPF/0018) is part of the Shin Yang Group.

Tan Sri Datuk Ling Chiong Ho is founder of the Shin Yang Group, and serves as the Chairman of Shin Yang Holding Sdn Bhd and Sarawak Oil Palms Bhd. Tan Sri Datuk Ling Chiong Ho and his brothers - Ling Chiong Sing, Ling Chiong Pin and Ling Chiong Sieng - are substantial shareholders of Shin Yang Holding Sdn Bhd. Tan Sri Datuk Lin Chiong Ho, Ling Chiong Sing and Lin Lu Kwang (the eldest son of Tan Sri Datuk Lin Chiong Ho) are substantial shareholders of Sarawak Oil Palms Bhd.<sup>8</sup>

8. Sarawak Oil Palm Bhd Annual Report 2018 [www.sop.com.my/wp-content/uploads/2019/05/SOP-AR-2018.pdf](http://www.sop.com.my/wp-content/uploads/2019/05/SOP-AR-2018.pdf)

## Supply Chain Information

Supply Chain Links: Traders	AAK	ADM	Cargill	Fuji Oil	KLK	Louis Dreyfus	Olam	Sime Darby
Shin Yang OP Planting area (LPF/0018)								
<b>Shin Yang/Sarawak Oil Palms Bhd</b>	x	x	x	x	x	x	x	x

Supply Chain Links: Consumer Brands	Avon	Colgate	General Mills	Hershey	Mars	Nestle
Shin Yang OP Planting area (LPF/0018)						
<b>Shin Yang/Sarawak Oil Palms Bhd</b>	x	x	x	x	x	x

Supply Chain Links: Consumer Brands	P&G	Reckitt Beck	Unilever
Shin Yang OP Planting area (LPF/0018)			
<b>Shin Yang/Sarawak Oil Palms Bhd</b>	x	x	x

## Group: TH Plantations Bhd

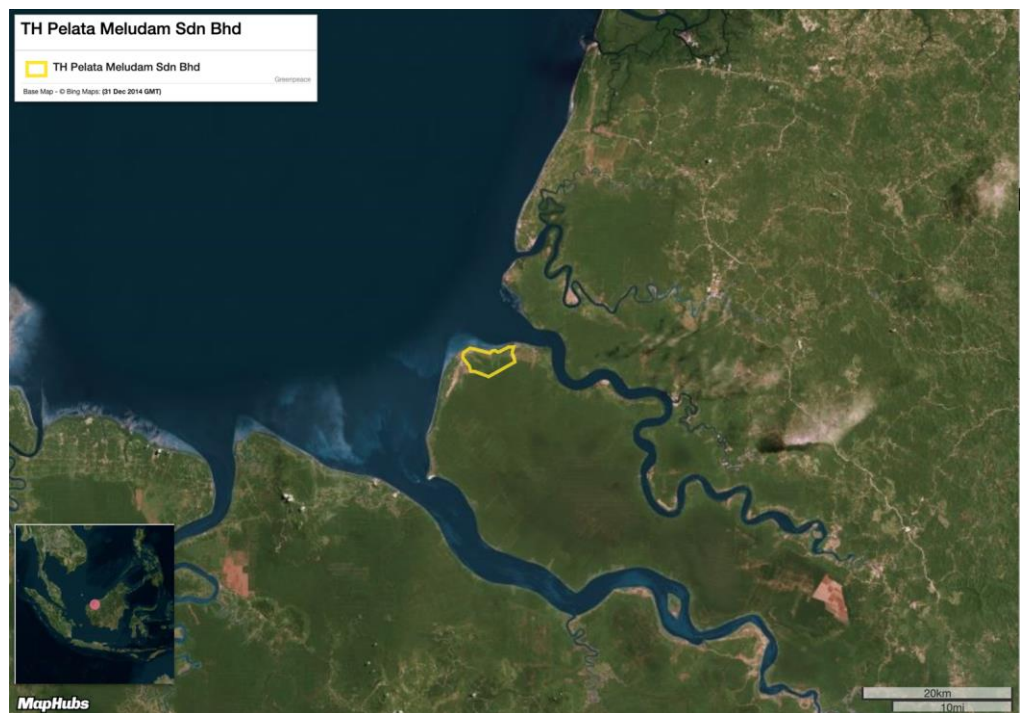
### TH Pelata Meludam Sdn Bhd

Concession location: Latitude 1.666, Longitude 4111.069

#### Deforestation and/or peat development

Report	Deforestation (ha)	Peat development (ha)	Peat forest development (ha)	Clearance prep/Stacking lines (ha)	Time period
Report 18	-	4	-	-	April 20 - August 1, 2019

Satellite imagery (see below) shows that between April 20, 2019 and August 1, 2019 a total of 4 hectares of peat were developed in the TH Pelata Meludam Sdn Bhd concession. (Imagery © 2019 Planet Labs Inc.)





## Alert Imagery (before and after satellite images)

Date: April 20, 2019



Date: August 1, 2019



## Ownership Information

TH Pelita Meludam Sdn Bhd is a subsidiary (60%) of TH Plantations Bhd.<sup>9</sup>

<sup>9</sup> TH Plantations Bhd Annual Report (2018), p5 <http://ir.chartnexus.com/thplantation/doc/ar/ar2018.pdf>



## Supply Chain Information

Supply Chain Links: Traders	AAK	ADM	Cargill	Fuji Oil	IOI	Keck Seng	KLK
TH Pelata Meludam Sdn Bhd							
<b>TH Plantations Bhd</b>	x	x	x	x	x	x	x

Supply Chain Links: Traders	Louis Dreyfus	Mewah	Musim Mas	Olam	Pacific Inter-Link (via Keck Seng)	Sime Darby	Wilmar
TH Pelata Meludam Sdn Bhd							
<b>TH Plantations Bhd</b>	x	x	x	x	x	x	x

Supply Chain Links: Consumer Brands	Avon	Colgate-Palmolive	General Mills	Hershey	ISF	Kellogg's	Mars
TH Pelata Meludam Sdn Bhd				x			
<b>TH Plantations Bhd</b>	x	x	x		x	x	x

Supply Chain Links: Consumer Brands	Nestle	PepsiCo	P&G	PZ Cussons	Reckitt Benckiser
TH Pelata Meludam Sdn Bhd					
<b>TH Plantations Bhd</b>	x	x	x	x	x

## Group: Tradewinds

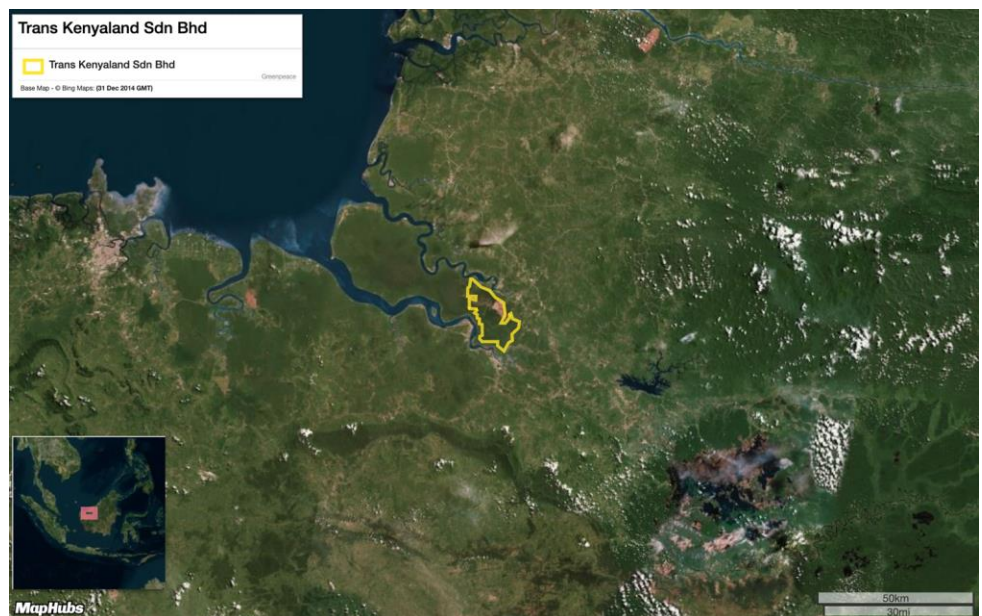
### Trans Kenyaland Sdn Bhd

Concession location: Latitude 1.361, Longitude: 111.465

#### Deforestation and/or peat development

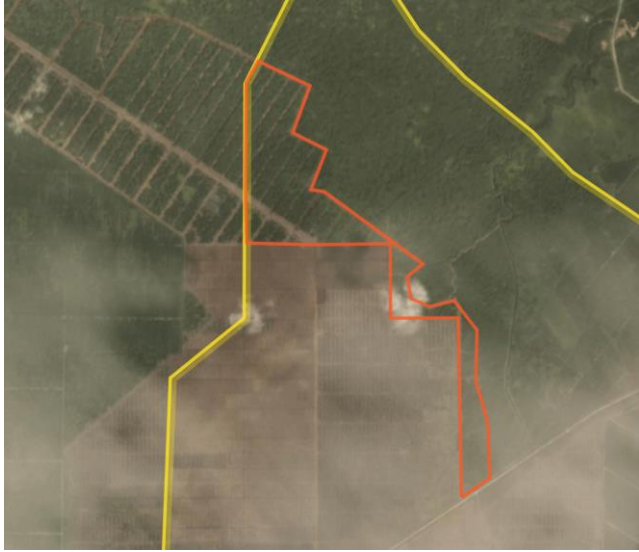
Report	Deforestation (ha)	Peat development (ha)	Peat forest development (ha)	Clearance prep/Stacking lines (ha)	Time period
Report 18	-	-	94	-	November 22, 2018 – July 9, 2019

Satellite imagery (see below) shows that between November 22, 2018 and July 9, 2019 a total of 94 hectares of peat forest were developed in the Trans Kenyaland Sdn Bhd concession. (Imagery © 2019 Planet Labs Inc.)



Alert Imagery (before and after satellite images)

Date: November 22, 2018



Date: July 9, 2019



## Ownership Information

Trans Kenyaland Sdn Bhd is a subsidiary (85%) of Amalan Penaga (M) Sdn Bhd, which is wholly owned by Tradewinds Plantation Bhd.<sup>10</sup>

10. Company Profile, Companies Commission of Malaysia

## Supply Chain Information

Supply Chain Links: Traders	AAK	ADM	Bunge	Cargill	Fuji Oil	ICOF	IOI
Trans Kenyaland Sdn Bhd							
<b>Tradewinds</b>	x	x	x	x	x	x	x

Supply Chain Links: Traders	KLK	Louis Dreyfus	Mewah	Musim Mas	Olam	Pacific Inter-link (via ICOF)	Sime Darby	Wilmar
Trans Kenyaland Sdn Bhd								
<b>Tradewinds</b>	x	x	x	x	x	x	x	x

Supply Chain Links: Consumer Brands	Avon	Colgate-Palmolive	General Mills	Hershey	ISF	Kellogg's
Trans Kenyaland Sdn Bhd						
<b>Tradewinds</b>	x	x	x	x	x	x

Supply Chain Links: Consumer Brands	Mars	Nestle	PepsiCo	P&G	PZ Cussons	Reckitt Benckiser
Trans Kenyaland Sdn Bhd						
<b>Tradewinds</b>	x	x	x	x	x	x

## Group: Woodman Group

### Baram Estate, part of LPF/0004

Concession location: Latitude 4.44, Longitude 114.235

#### Deforestation and/or peat development

Report	Deforestation (ha)	Peat development (ha)	Peat forest development (ha)	Clearance prep/Stacking lines (ha)	Time period
Report 18	1	168	-	-	March 6 – Aug. 1, 2019

Satellite imagery (see below) shows that between March 6, 2019 and August 1, 2019 a total of 1 hectares of forest were cleared and 168 hectares were prepared for clearance in the Woodman Group (Baram Estate, part of LPF/0004) concession. (Imagery © 2019 Planet Labs Inc.)



Alert Imagery (before and after satellite images)

Date: March 6, 2019



Date: August 1, 2019



## Ownership Information

The Baram Estate which part of LPF/0004 is part of the Woodman Group.<sup>11</sup>

<sup>11</sup>. [www.sgs.com/en/certified-clients-and-products/fcm/malaysia/-/media/3D89ECFC5278435DA65647823890FD89.ashx](http://www.sgs.com/en/certified-clients-and-products/fcm/malaysia/-/media/3D89ECFC5278435DA65647823890FD89.ashx);  
[www.woodman.com.my/contact.php](http://www.woodman.com.my/contact.php)



## Supply Chain Information

Supply Chain Links: Traders	ADM	BLD	Bunge	Cargill	Fuji Oil	KLK	Mewah	Olam	Sime Darby	Wilmar
Woodman Group (Baram Estate, part of LPF/0004)					x		x	x	x	x
<b>Woodman Group</b>	<b>x</b>	<b>x</b>	<b>x</b>	<b>x</b>	<b>x</b>	<b>x</b>	<b>x</b>	<b>x</b>	<b>x</b>	<b>x</b>

Supply Chain Links: Consumer Brands	Avon	Colgate-Palmolive	General Mills	Hershey	Kellogg's	Mars	Mondelez	Nestle
Woodman Group (Baram Estate, part of LPF/0004)		x	x	x	x	x	x	x
<b>Woodman Group</b>	<b>x</b>	<b>x</b>	<b>x</b>	<b>x</b>	<b>x</b>	<b>x</b>	<b>x</b>	<b>x</b>

Supply Chain Links: Consumer Brands	PepsiCo	P&G	PZ Cussons	Reckitt Benckiser	Unilever
Woodman Group (Baram Estate, part of LPF/0004)	x	x	x	x	
<b>Woodman Group</b>	<b>x</b>	<b>x</b>	<b>x</b>	<b>x</b>	<b>x</b>

## Additional cases identified using screened GLAD alerts

The following cases have been identified through screened GLAD alerts (see methodology below). As these cases are either repeat cases from previous Rapid Response reports or where Mighty Earth did not determine any supply chain links for these concessions/Groups, no Planet image analysis was conducted for these cases to save resources.

**Mighty Earth expects that palm oil traders conduct their own due diligence to determine if they are exposed to such companies/Groups. Further, traders without supply chain links to these cases should put them on their 'no buy' lists.**

Methodology:

For Indonesia, GLAD alerts are screened using the Indonesia Ministry of Forestry and the Environment land cover dataset for 2017 which classifies existing palm oil plantations and primary and secondary forest. Hence, only GLAD alerts in primary and secondary forest according to that dataset are included.

For Malaysia, GLAD alerts are screened to exclude known plantation areas using the Global Forest Watch (GFW) plantations dataset. This automatically eliminates the most common false positives, i.e. the replanting of palm that existed prior to the year 2000.

New Cases				
Concession/ license area	Group/ownership	Area covered by screened GLAD alerts (ha)	Time period	Supply chain connection identified
Cambridge Alliance Sdn Bhd	Unknown	~14	June 15 – July 15, 2019	None
KUD Restu Bersama	Unknown	~3	June 15 – July 15, 2019	None
Lima Jaya Timber Sdn Bhd (Limbang)	Lee Ling Timber Group	~5	June 15 – July 15, 2019	None
Lima Jaya Timber Sdn Bhd (LPF/0038 - part 2)	Lee Ling Timber Group	~5	June 15 – July 15, 2019	None
Pelita Holdings Sdn Bhd (LCDA-OT/9137)	Pelita Holdings Sdn Bhd	~4	June 15 – July 15, 2019	None
PT Berkah Sawit Abadi	First Borneo Group	~4	June 15 – July 15, 2019	None
Selangor Oil Palm Industries Corporation Sdn Bhs	Unknown	~3	June 15 – July 15, 2019	None

## New Cases (continued)

Concession/ license area	Group/ownership	Area covered by screened GLAD alerts (ha)	Time period	Supply chain connection identified
Telliana Enterprise Sdn Bhd	Unknown	~3	June 15 – July 15, 2019	None
Titanium Management Sdn Bhd (Part 1)	Unknown	~4	June 15 – July 15, 2019	None
Titanium Management Sdn Bhd (Part 2)	Unknown	~13	June 15 – July 15, 2019	None
PT Wanapura Agraraksa	Unknown	~17	June 15 – July 15, 2019	None
PT Inti Palm Sumatra	Unknown	~9	June 15 – July 15, 2019	None
PT Artanusa Agrindo	Unknown	~4	June 15 – July 15, 2019	None
PT Multidaya Fortuna	Unknown	~3	June 15 – July 15, 2019	None
PT Sumber Madu Bukari	Unknown	~3	June 15 – July 15, 2019	None

## Repeat Cases

Concession license area	Group/ownership	Area covered by screened GLAD alerts (ha)	Time period	Rapid Response reports related to each case
PT Sawit Mandiri Lestari	PT Sawit Sumbermas Sarana Tbk	~3	June 15 – July 15, 2019	Rapid Response reports <a href="#">3</a> , <a href="#">7</a> , <a href="#">8</a> , <a href="#">9</a> , <a href="#">10</a> , <a href="#">14</a> , <a href="#">17</a>
PT Persada Era Agro Kencana	Mulia Sawit Group	~42	June 15 – July 15, 2019	Rapid Response reports <a href="#">9</a> , <a href="#">10</a> , <a href="#">11</a> , <a href="#">12</a> , <a href="#">15</a> , <a href="#">17</a>
PT Kayan Plantation	Unknown	~6	June 15 – July 15, 2019	Rapid Response reports <a href="#">15</a> and <a href="#">17</a>
Empresa (M) Sdn Bhd (OT/0351)	Yuwang Group	~6	June 15 – July 15, 2019	<a href="#">Rapid Response report 17</a>
Dataran Linau OP (SY) (Lot 1 Block 14 Murum LD)	Shin Yang	~20	June 15 – July 15, 2019	<a href="#">Rapid Response report 17</a>
Woodman Group (Adong Estate, part of LPF/0004)	Woodman Group	~4	June 15 – July 15, 2019	<a href="#">Rapid Response report 17</a>
Woodman Group (Liku Estate, part of LPF/0004)	Woodman Group	~3	June 15 – July 15, 2019	<a href="#">Rapid Response report 17</a>
Hua Seng Plantation Sdn Bhd	Double Dynasty	~43	June 15 – July 15, 2019	<a href="#">Rapid Response report 17</a>
PT Usaha Sawit Unggul	Asian Agri (RGE)	~43	June 15 – July 15, 2019	<a href="#">Rapid Response report 17</a>
PT Agro Lintas Nusantara	Unknown	~34	June 15 – July 15, 2019	<a href="#">Rapid Response report 17</a>
PT Wahana Hampanan Hijau	First Borneo Group	~33	June 15 – July 15, 2019	<a href="#">Rapid Response report 17</a>
Mutiara Pelita Genaan Plantation Sdn Bhd	Double Dynasty	~31	June 15 – July 15, 2019	Rapid Response reports <a href="#">15</a> and <a href="#">16</a>
LPF/0006 Samling Lana	Samling	~105	June 15 – July 15, 2019	Rapid Response reports <a href="#">15</a> and <a href="#">16</a>

## Repeat Cases (continued)

Concession license area	Group/ownership	Area covered by screened GLAD alerts (ha)	Time period	Rapid Response reports related to each case
LPF/0007 Samling Jelalong (OP)	Samling	~33	June 15 – July 15, 2019	Rapid Response reports <a href="#">15</a> and <a href="#">16</a>
LPF/0007 Jelalong OP (Glenealy) Part 1	Samling	~8	June 15 – July 15, 2019	Rapid Response reports <a href="#">15</a> and <a href="#">16</a>
PT Pinang Witmas Abadi	Pundi Group	~7	June 15 – July 15, 2019	Rapid response reports <a href="#">12</a> and <a href="#">16</a>
PT Palem Segar Lestari	Henan Jiujiu Chemical Co. Ltd	~3	June 15 – July 15, 2019	Rapid response reports <a href="#">12</a> and <a href="#">16</a>
PT Borneo Estate Sejahtera	First Borneo Group	~27	June 15 – July 15, 2019	Rapid Response report <a href="#">15</a>
Ladang Tabung Haji	TH Plantations Bhd	~13	June 15 – July 15, 2019	Rapid Response report <a href="#">15</a>
PT Kahayan Agro Plantation	Anglo-Eastern Plantations	~19	June 15 – July 15, 2019	Rapid Response reports <a href="#">1</a> , <a href="#">14</a> , <a href="#">15</a>
PT Rimbun Sawit Papua	Salim/IndoGunta	~8	June 15 – July 15, 2019	Rapid Response reports <a href="#">3</a> , <a href="#">10</a> , <a href="#">13</a> , <a href="#">14</a>
PT Arjuna Utama Sawit (area 1)	Pactra Group	~39	June 15 – July 15, 2019	Rapid Response report <a href="#">14</a>
PT Arjuna Utama Sawit (area 2)	Pactra Group	~8	June 15 – July 15, 2019	Rapid Response report <a href="#">14</a>