

Rapid Response

Palm Oil, Report 16



June 2019

Prepared with support from MapHubs

Table of Contents

Cases identified using Planet imagery

Indonesian Companies

Bakrie Group: PT Menthobi Mitra Lestari 4

Malaysian Companies

Samling Group: Samling Jelalong LPF 0007 (Part 2) 7

Additional Cases Identified Using Filtered GLAD Alerts

New Cases

Best Group: PT Wanasawit Subur Lestari 10

Unknown Group: PT Gapura Alas Lestari 10

Leow family: PT Gunung Agung Perkasa 10

Unknown Group: PT Laot Bangko 10

Repeat Cases

Ta Ann Group: Ladang Selezu Sdn Bhd 11

Double Dynasty Group: Mutiara Pelita Genaan Plantation Sdn Bhd 11

Unknown Group: PT Borneo Estate Sejahtera 11

Genting Group: PT Citra Sawit Cemerlang 11

Indonusa Group: PT Internusa Jaya Sejahtera 11

KPP Group: PT Kayan Plantation 11

Widya Corporation: PT Mulia Inti Perkasa 11

Genting Group: PT Permata Sawit Mandiri 11

Samling Group: Samling Jelalong LPF 0007 Part 1 11

Samling Group: Samling Jelalong LPF 0007 Part 3 11

Samling Group: Samling Lana LPF 0006 11

Puncak Niaga: Danum Jaya Sdn Bhd 11

Unknown Group: PT Ichiko Agro Lestari 11

Jeff Setiawan and Ir. Daud: PT Rimbun Sawit Papua 12

Hayel Saeed Anam Group: PT Kartika Cipta Pratama 12

Shanghai Xinjui Checmical Co Ltd: PT Sebaung Sawit Plantation 12

Makin Group: PT Krida Darma Kahripan 12

Sources for supply chain information: <https://bit.ly/2EI4goY>

Supply chain information included in Rapid Response reports is based on latest publicly versions of mill disclosures and grievance logs. Mighty Earth encourages companies to send updated versions of mill disclosures as soon as they become available and any decision to suspend supplies with a given group/company listed in those mill disclosures; please send to rapidresponse@mightyearth.org.

Table of Contents (cont.)

Additional Cases Identified Using Filtered GLAD Alerts

Repeat Cases

Henan Jiujiu Chemical Co Ltd: PT Palem Segar Lestari	12
Mulia Sawit Group: PT Persada Era Agro Kencana	12
Pundi Group: PT Pinang Witmas Abadi	12
Makin Group: PT Krida Darma Kahuripan	12
Tuan Junus Sutiono and Tuan Watson Dharma: PT Subur Karunia Raya	12
Starmas Sentosa Mandiri: PT Agrindo Sukses Sejahtera	12
Metro Jaya Lestari: PT Sawit Mandiri Lestari	12
Karyadeka Group/Korompis family: PT Berau Karetindo Lestari	12

Group: Bakrie

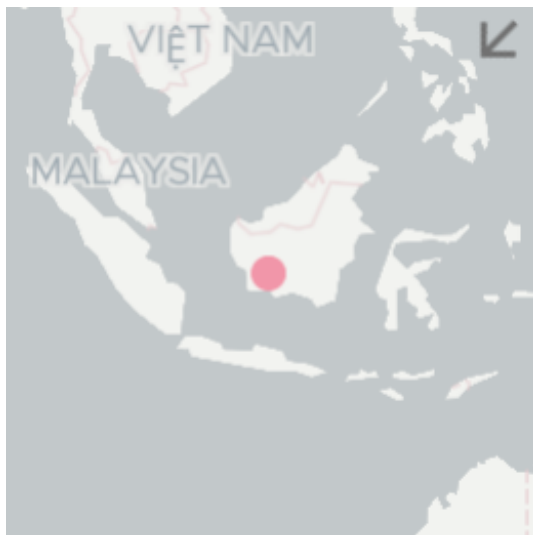
PT Mentohi Mitra Lestari

Location: -1.753, 111.6

Deforestation and/or peat development

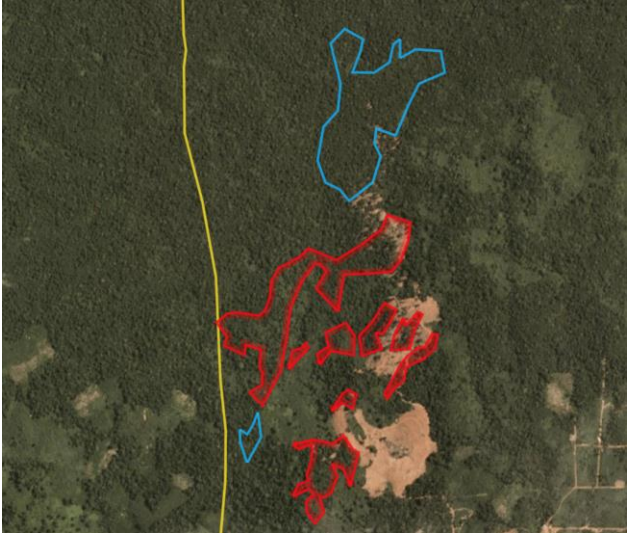
Report	Deforestation (ha)	Peat development (ha)	Peat forest development (ha)	Clearance prep/Stacking lines (ha)	Time period
Report 16	115	-	-	40	April 17 - May 27, 2019

Satellite imagery (see below) shows that between April 17, 2019 and May 27, 2019 a total of 115 hectares of forest were cleared and 40 hectares were prepared for clearance in the PT Mentohi Mitra Lestari concession. (Imagery © 2019 Planet Labs Inc.)

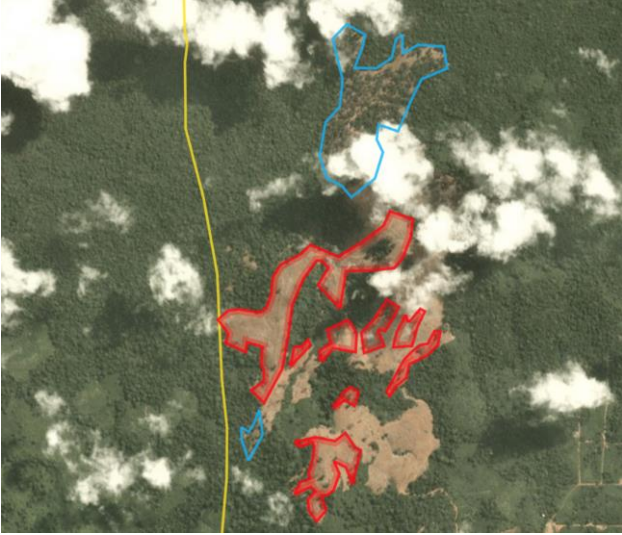


Alert Imagery (before and after satellite images)

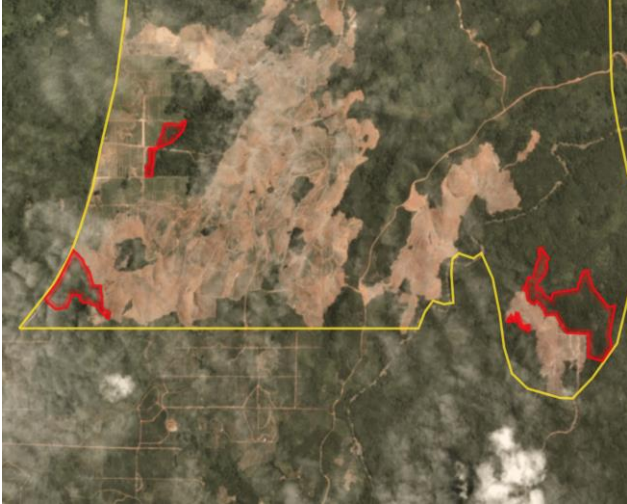
Date: April 17, 2019



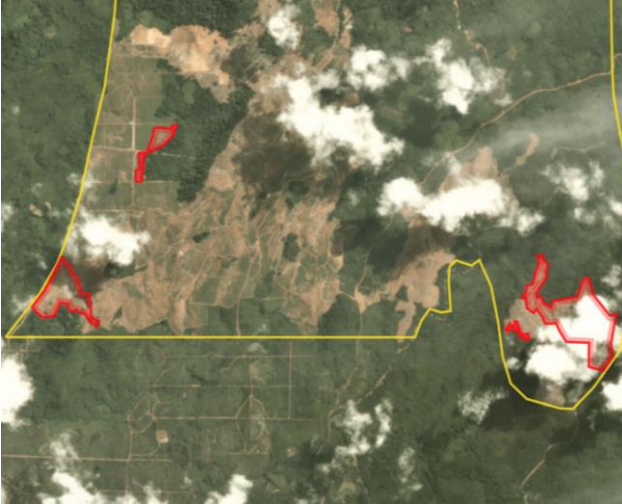
Date: May 27, 2019



Date: April 17, 2019



Date: May 27, 2019



Ownership Information

PT Mentohi Mitra Lestari is part of the Bakrie Group.¹

1. PT MML <http://bit.ly/2QAjXIM>; Bakrie Annual Report 2018, p98 <http://bit.ly/2QE9d0T>

Supply Chain Information

Supply Chain Links: Traders	AAK	ADM	Apical	Bunge LC	Cargill	Fuji Oil	GAR	Louis Dreyfus
PT Menthobi Mitra Lestari								
Bakrie Group	x	x	x	x	x	x	x	x

Supply Chain Links: Traders	Musim Mas	Olam	Sime Darby	Wilmar
PT Menthobi Mitra Lestari				
Bakrie Group	x	x	x	x

Supply Chain Links: Consumer Brands	Avon	Colgate-Palmolive	General Mills	Hershey	Kellogg's	Mars	Mondelez	Nestle
PT Menthobi Mitra Lestari								
Bakrie Group	x	x	x	x	x	x	x	x

Supply Chain Links: Consumer Brands	PepsiCo	P&G	PZ Cussons	Reckitt Benckiser	Unilever
PT Menthobi Mitra Lestari					
Bakrie Group	x	x	x	x	x

Group: Samling

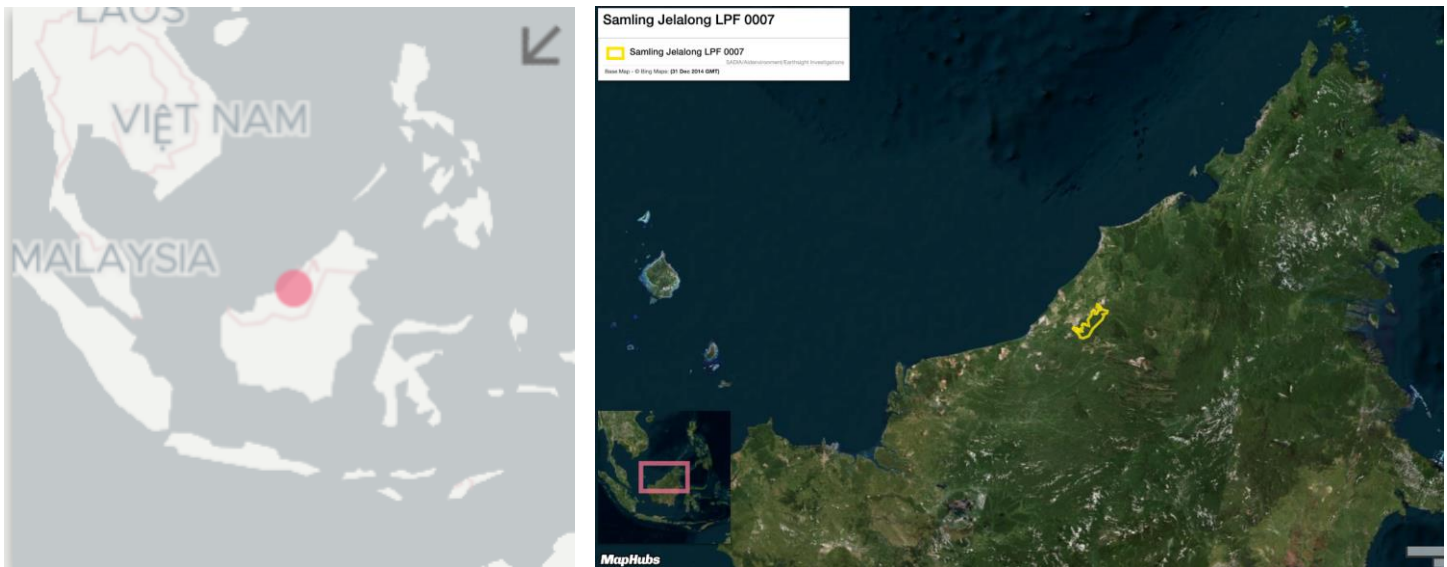
Samling Jelalong LPF 0007 (Part 2)

Location: 3.209, 113.8

Deforestation and/or peat development

Report	Deforestation (ha)	Peat development (ha)	Peat forest development (ha)	Clearance prep/Stacking lines (ha)	Time period
Report 16	6	-	-	56	May 15 – May 27, 2019

Satellite imagery (see below) shows that between May 15, 2019 and May 27, 2019 a total of 6 hectares of forest were cleared and 56 hectares were prepared for clearance in the Samling Jelalong LPF 0007 (Part 2) concession. (Imagery © 2019 Planet Labs Inc.)

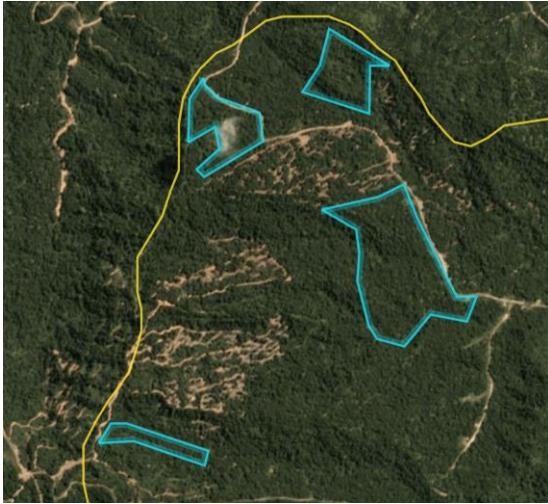


Case Notes

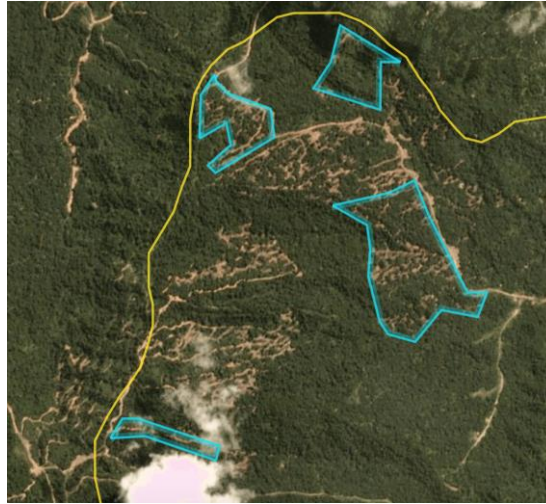
The LPF 0007 case was included in Rapid Response report 15, which covered Part 1 and Part 3 of the concession. This report presents deforestation analysis for the remainder of the LPF 0007 concession, which we are referring to as Part 2.

Alert Imagery (before and after satellite images)

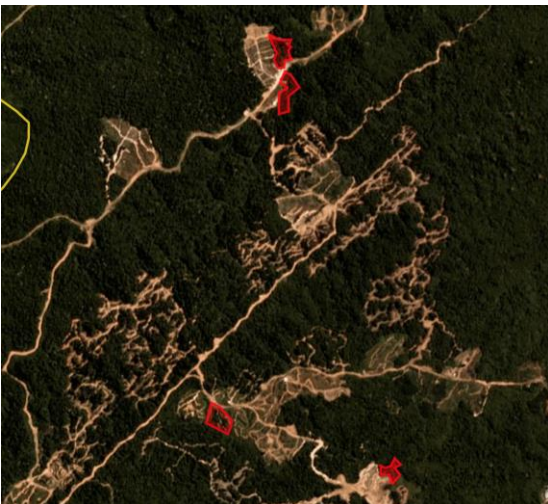
Date: May 15, 2019



Date: May 27, 2019



Date: May 15, 2019



Date: May 27, 2019



Ownership Information

The Samling Jelalong LPF 0007 concession is part of the Samling Group.²

2. Samling Group Ltd Public Disclosure, 2007 <http://doc.irasia.com/listco/hk/samling/circulars/c20214-eltn20071022285.pdf>

Supply Chain Information

Supply Chain Links: Traders	AAK	ADM	Cargill	Fuji Oil	IOI	KLK
Samling Jelalong LPF 0007						
Samling	x	x	x	x	x	x

Supply Chain Links: Traders	Olam	Sime Darby	Wilmar
Samling Jelalong LPF 0007			
Samling	x	x	x

Supply Chain Links: Consumer Brands	Avon	Colgate-Palmolive	General Mills	Hershey	Kellogg's	Mars	Mondelez
Samling Jelalong LPF 0007							
Samling	x	x	x	x	x	x	x

Supply Chain Links: Consumer Brands	Nestle	PepsiCo	P&G	PZ Cussons	Reckitt Benckiser	Unilever
Samling Jelalong LPF 0007						
Samling	x	x	x	x	x	x

Additional cases identified using screened GLAD alerts

The following cases have been identified through screened GLAD alerts (see methodology below). As these cases are either repeat cases from previous Rapid Response reports or where Mighty Earth did not determine any supply chain links for these concessions/Groups, no Planet image analysis was conducted for these cases to save resources.

Mighty Earth expects that palm oil traders conduct their own due diligence to determine if they are exposed to such companies/Groups. Further, traders without supply chain links to these cases should put them on their 'no buy' lists.

Methodology:

For Indonesia, GLAD alerts are screened using the Indonesia Ministry of Forestry and the Environment land cover dataset for 2017 which classifies existing palm oil plantations and primary and secondary forest. Hence, only GLAD alerts in primary and secondary forest according to that dataset are included.

For Malaysia, GLAD alerts are screened to exclude known plantation areas using the Global Forest Watch (GFW) plantations dataset. This automatically eliminates the most common false positives, i.e. the replanting of palm that existed prior to the year 2000.

New Cases				
Concession / license area	Group/ownership	Area covered by screened GLAD alerts (ha)	Time period	Supply Chain Connections
PT Wanasawit Subur Lestari	Best Group	~37	March 31 - April 29, 2019	Not identified
PT Gapura Alas Lestari	Unknown	~44	April 19 - May 18, 2019	Not identified
PT Gunung Agung Perkasa	Leow family	~36	April 19 - May 18, 2019	Not identified
PT Laot Bangko	Unknown	~27	April 19 - May 18, 2019	Not identified

Repeat Cases				
Concession license area	Group/ownership	Area covered by screened GLAD alerts (ha)	Time period	Last Rapid Response report related to each case
Ladang Selezu Sdn Bhd	Ta Ann Group	~25	April 19 - May 18, 2019	Rapid Response report 15
Mutiara Pelita Genaan Plantation Sdn Bhd	Double Dynasty Group	~123	April 19 - May 18, 2019	Rapid Response report 15
PT Borneo Estate Sejahtera	Unknown	~31	April 19 - May 18, 2019	Rapid Response report 15
PT Citra Sawit Cemerlang	Genting Group	~169	April 19 - May 18, 2019	Rapid Response report 15
PT Internusa Jaya Sejahtera	Indonusa Group	~621	April 19 - May 18, 2019	Rapid Response report 15
PT Kayan Plantation	KPP Group	~27	April 19 - May 18, 2019	Rapid Response report 15
PT Mulia Inti Perkasa	Widya Corporation	~119	April 19 - May 18, 2019	Rapid Response report 15
PT Permata Sawit Mandiri	Genting Group	~92	April 19 - May 18, 2019	Rapid Response report 15
Samling Jelalong LPF 0007 Part 1	Samling Group	~47	April 19 - May 18, 2019	Rapid Response report 15
Samling Jelalong LPF 0007 Part 3	Samling Group	~25	April 19 - May 18, 2019	Rapid Response report 15
Samling Lana LPF 0006	Samling Group	~129	April 19 - May 18, 2019	Rapid Response report 15
Danum Sinar Sdn Bhd	Puncak Niaga	~166	April 19 - May 18, 2019	Rapid Response report 14
PT Ichiko Agro Lestari	Unknown	~64	April 19 - May 18, 2019	Rapid Response report 14

Repeat Cases (cont.)

Concession license area	Group/ownership	Area covered by screened GLAD alerts (ha)	Time period	Last Rapid Response report related to each case
PT Rimbun Sawit Papua	Jeff Setiawan and Ir. Daud	~141	April 19 - May 18, 2019	Rapid Response report 14
PT Kartika Cipta Pratama	Hayel Saeed Anam Group	~81	April 19 - May 18, 2019	Rapid Response report 13
PT Sebaung Sawit Plantation	Shanghai Xinjui Chemical CO Ltd	~70	April 19 - May 18, 2019	Rapid Response report 13
PT Krida Darma Kahuripan	Makin Group	~73	April 19 - May 18, 2019	Rapid Response report 12
PT Palem Segar Lestari	Henan Jiujiu Chemical Co. Ltd	~56	April 19 - May 18, 2019	Rapid Response report 12
PT Persada Era Agro Kencana	Mulia Sawit Group	~99	April 19 - May 18, 2019	Rapid Response report 12
PT Pinang Witmas Abadi	Pundi Group	~63	April 19 - May 18, 2019	Rapid Response report 12
PT Krida Darma Kahuripan	Makin Group	~73	April 19 - May 18, 2019	Rapid Response report 12
PT Subur Karunia Raya	Tuan Junus Sutiono and Tuan Watson Dharma	~33	April 19 - May 18, 2019	Rapid Response report 9
PT Agrindo Sukses Sejahtera	Starmas Sentosa Mandiri	~27	April 19 - May 18, 2019	Rapid Response report 8
PT Sawit Mandiri Lestari	Metro Jaya Lestari	~40	April 19 - May 18, 2019	Rapid Response report 3
PT Berau Karetindo Lestari	Karyadeka Group/Korompis family	~35	April 19 - May 18, 2019	Rapid Response report 2