



Mighty Earth Rapid Response Report 8

Indonesian companies:

PT Permata Putera Mandiri (Blok I), PT Sawit Mandiri Lestari, PT Sebaung Sawit Plantations, PT Agrindo Sukses Sejahtera, PT Sanggam Harapan Sejantera, and KUD Restu Bersama

September 2018

Prepared with support from Aidenvironment and MapHubs

Table of contents

Indonesian Companies

PT Permata Putera Mandiri (Blok I)	3
PT Sawit Mandiri Lestari	6
PT Sebaung Sawit Plantations	9
PT Agrindo Sukses Sejahtera	12
PT Sanggam Harapan Sejantera	14
KUD Restu Bersama	16
Sources for supply chain information	18

PT Permata Putera Mandiri (Blok I)

PT Permata Putera Mandiri Blok I (PT PPM) is located in West Papua province. It covers an area of 34,310 hectares¹.

Long 132°21'17.93"E, Lat 1°53'45.09"S)



Deforestation

Report	Deforestation (ha)	Peat development (ha)	Peat forest clearance (ha)	Clearance prep/ stacking lines (ha)	Time period
Report 3	668	-	-	-	June – December 2017
Report 4	951	-	-	-	March 11 – May 25, 2018
Report 6	82	-	-	-	May 25 – July 9, 2018
Report 8	114	-	-	-	July 9 – August 18, 2018

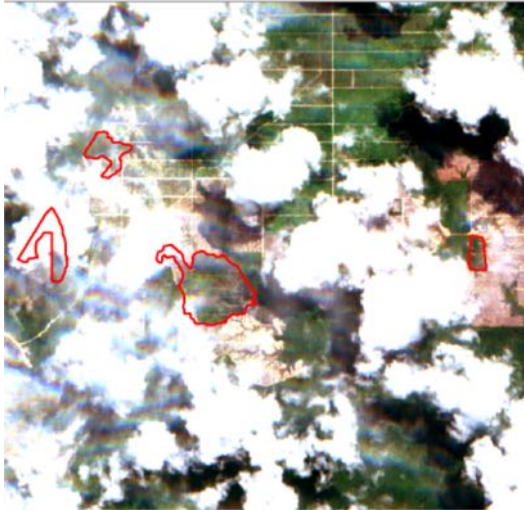
PT Permata Putera Mandiri Blok I (PT PPM) was featured in Rapid Response reports 3, 4 and 6 due to ongoing deforestation. Satellite imagery (see below) shows that 114 hectares of forest were cleared in the concession from July 9 to August 18, 2018.



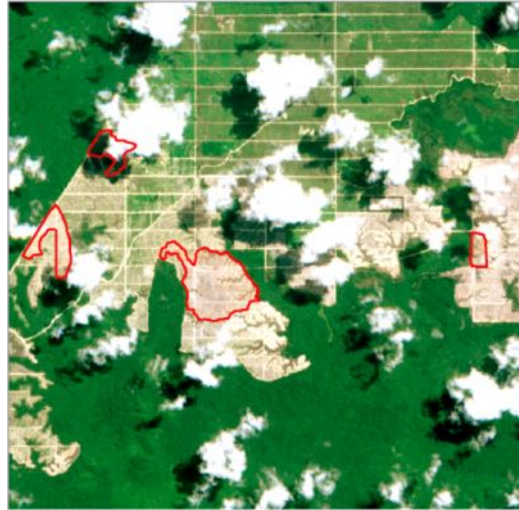
¹ Dinas Perkebunan Papua 2015

Alert Imagery (before and after satellite images)

Date: July 9, 2018



Date: August 18, 2018



Ownership Information

Group: Austindo Nusantara Jaya Tbk (ANJ Group)

PT Permata Putera Mandiri is owned by PT Austindo Nusantara Jaya Agri, a subsidiary of PT Austindo Nusantara Jaya Tbk (ANJ Group). Mr. Geetha Govindan is the President Director of Austindo Nusantara Jaya Tbk.²

Identity	Ownership	Position
Mr. Geetha Govindan	-	President director
Mr. Sucipto Maridjan	-	Director
Mrs. Nopri Pitoy	-	Director
Mr. Aloysius D'Cruz	-	Director
Mr. Handi Belamande Syarif	-	Director
Mr. Sonny Sunjaya Sukada	-	Director
Mr. George Santosa Tahija	28.99%	President commissioner
Mrs. Istini Tatiek Siddharta	-	Commissioner
Mr. Anastasius Wahyuhadi	-	Commissioner

² <https://anj-group.com/en/group-structure>

Supply Chain Information

Traders:

Supply chain links:	Iffco	Gokul Agro Resources
PT Permata Putera Mandiri (Blok I)		
ANJ Group	X	X

PT Sawit Mandiri Lestari

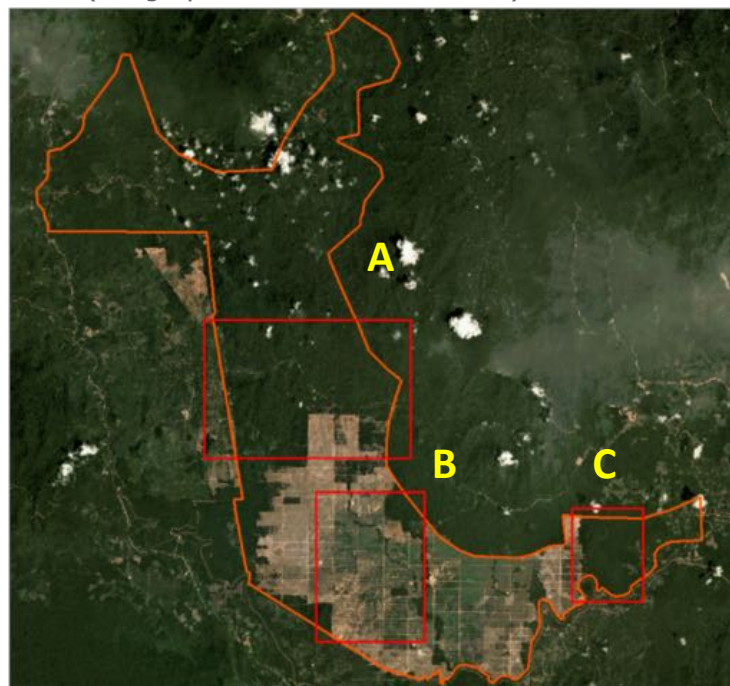
PT Sawit Mandiri Lestari is located in Lamandau Regency, Central Kalimantan. The concession covers an area of 19,635 hectares³. (Long 111°10'42.9"E, Lat 1°52'57.3"S)



Deforestation

Report	Deforestation (ha)	Peat development (ha)	Peat forest clearance (ha)	Clearance prep/stacking lines (ha)	Time period
Report 3	5,600	-	-	-	March 8, 2016 – December 12, 2017
Report 7	761	-	-	-	May 22 – August 2, 2018 (A) and May 22 – August 13, 2018 (B)
Report 8	630	-	-	-	August 2 – September 14, 2018 (A & B) and August 13 – September 14, 2018 (C)

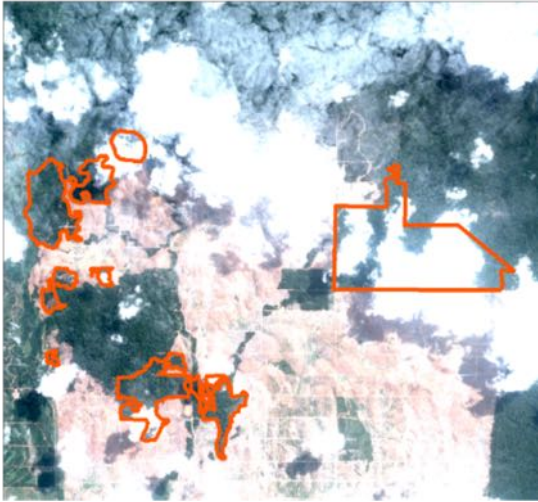
Satellite imagery (see below) shows that between August 2 to September 14, 2018 (Site A & B) and between August 13 to September 14, 2018 (Site C), a total of 630 hectares of forest were cleared in PT Sawit Mandiri Lestari concession (Imagery © 2018 Planet Labs Inc.)



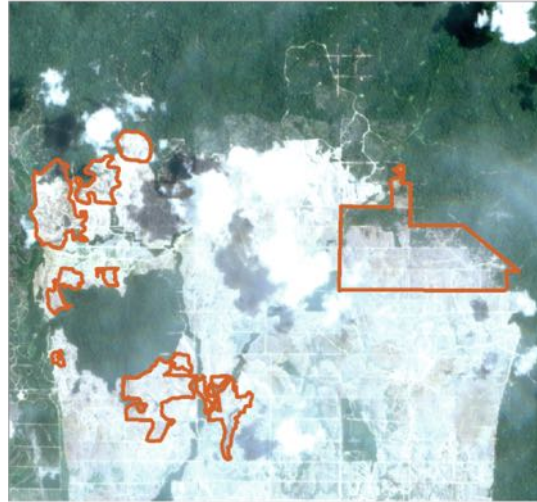
³ Ijin Usaha Perkebunan Tahun 2014

Alert Imagery (before and after satellite images)

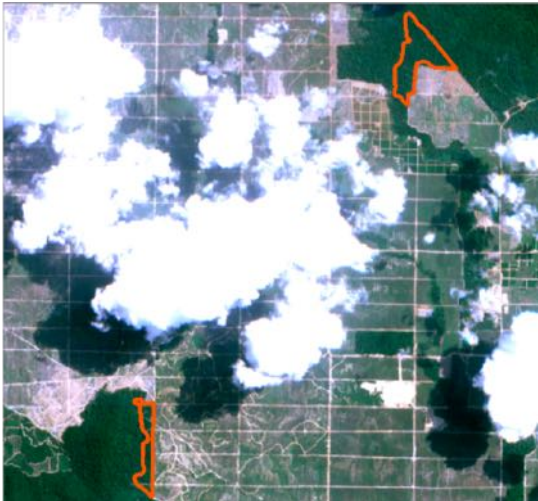
Date: August 2, 2018 A



Date: September 14, 2018 A



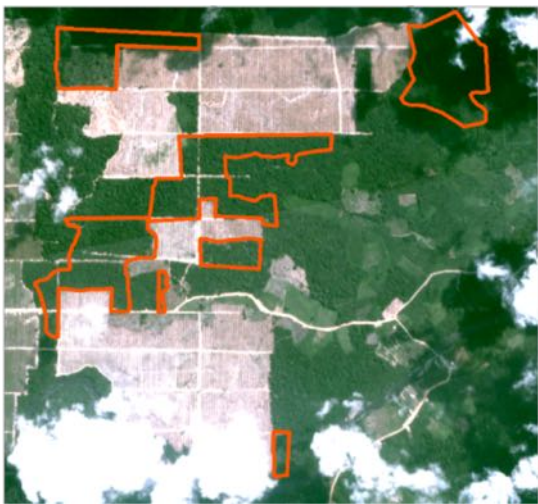
Date: August 2, 2018 B



Date: September 14, 2018 B



Date: August 13, 2018 C



Date: September 14, 2018 C



Ownership Information

Group: PT Metro Lestari Jaya

Up until December 2015, PT Sawit Mandiri Lestari was a subsidiary of Sawit Sumbermas Sarana (SSMS), part of the Citra Borneo Indah Group. PT Sawit Mandiri Lestari is now owned by Rinawati (60%) and Hamidi Mukhdar Said (40%) through PT Metro Lestari Jaya⁴.

Identity	Ownership	Position
Rinawati	60%	-
Hamidi Mukhdar Said	40%	-
Afrian Fanani	-	Director
Dona Malindo	-	Commissioner

Supply Chain Information

No supply chain information available.

⁴ Notary Act – Sawit Mandiri Lestari & Mitra Jaya Lestari

PT Sebaung Sawit Plantations

PT Sebaung Sawit Plantations is located in Nunukan Regency, North Kalimantan. The concession covers an area of 11,537 hectares.⁵
(Long 3° 50' 08" N 117° 23' 14" E)



Peat development

Report	Deforestation (ha)	Peat development (ha)	Peat forest clearance (ha)	Clearance prep/stacking lines (ha)	Time period
Report 8	-	198	-	-	July 25 – September 18, 2018 (A & C) and July 25 – August 29, 2018 (B)

Satellite imagery (see below) shows that from July 25 to September 18, 2018 (Site A & C) and from July 25 to August 29, 2018 (Site B), a total of 198 hectares of peat were developed in the PT Sebaung Sawit Plantations concession (Imagery © 2018 Planet Labs Inc.)



⁵ Dinas Perkebunan Kaltim & Kaltara Tahun 2012

Alert Imagery (before and after satellite images)

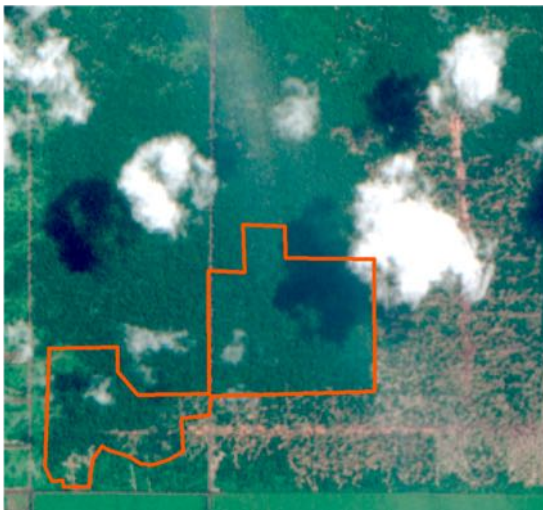
Date: July 25, 2018 A



Date: September 18, 2018 A



Date: July 25, 2018 B



Date: August 29, 2018 B



Date: July 25, 2018 C



Date: September 18, 2018 C



Ownership Information

Group: Shanghai Xinjiu Chemical Co. Ltd.

PT Sebaung Sawit Plantations is owned by Shanghai Xinjiu Chemical Co. Ltd (90%) and by PT Citra Makmur Sentosa (10%). Shanghai Xinjiu Chemical Co. Ltd is a China-registered company specializing in fatty acids and derivative products.

Mr. Tjia Ke Seng (also known as 'Dachlan'), a Chinese citizen, is President Director of PT Sebaung Sawit Plantations⁶. He is also a Director of PT Palembang Segar Lestari, also located in North Kalimantan.

Identity	Ownership	Position
Mao Chunning	-	President Commissioner
Tjia Ke Seng/Dachlan	-	President Director

Supply Chain Information

No supply chain information available.

⁶ Notary Act – Sebaung Sawit Plantations

PT Agrindo Sukses Sejahtera

PT Agrindo Sukses Sejahtera is located in Berau Regency, North Kalimantan. The concession covers an area of 5,314 hectares⁷.
(Long 2° 18' 56" N 116° 54' 44" E)



Deforestation

Report	Deforestation (ha)	Peat Development (ha)	Peat forest clearance (ha)	Clearance prep/ stacking lines (ha)	Time period
Report 8	78	-	-	-	July 15 – September 15, 2018

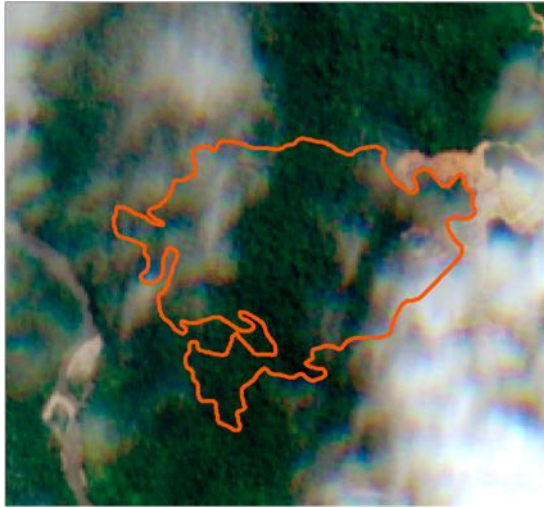
Satellite imagery (see below) shows that between July 15 to September 15, 2018, a total of 78 hectares of forest were cleared in the PT Agrindo Sukses Sejahtera concession (Imagery © 2018 Planet Labs Inc.)



⁷ Dinas Perkebunan Kaltim Tahun 2016

Alert Imagery (before and after satellite images)

Date: July 15, 2018



Date: September 15, 2018



Ownership Information

Group: Starmas Sentosa Mandiri

PT Agrindo Sukses Sejahtera is owned by Starmas Sentosa Mandiri through PT Agrindo Usaha Mandiri, PT Langgeng Prima Lestari and Borneomas Heritage Coal.⁸

Identity	Ownership	Position
Agus Suparmanto	99.6 %	Commissioner
Rusdji Musa	-	Director
Ratna Dewi Tampubulon	0.4 %	-

Supply Chain Information

No supply chain information available.



PT Sanggam Harapan Sejahtera

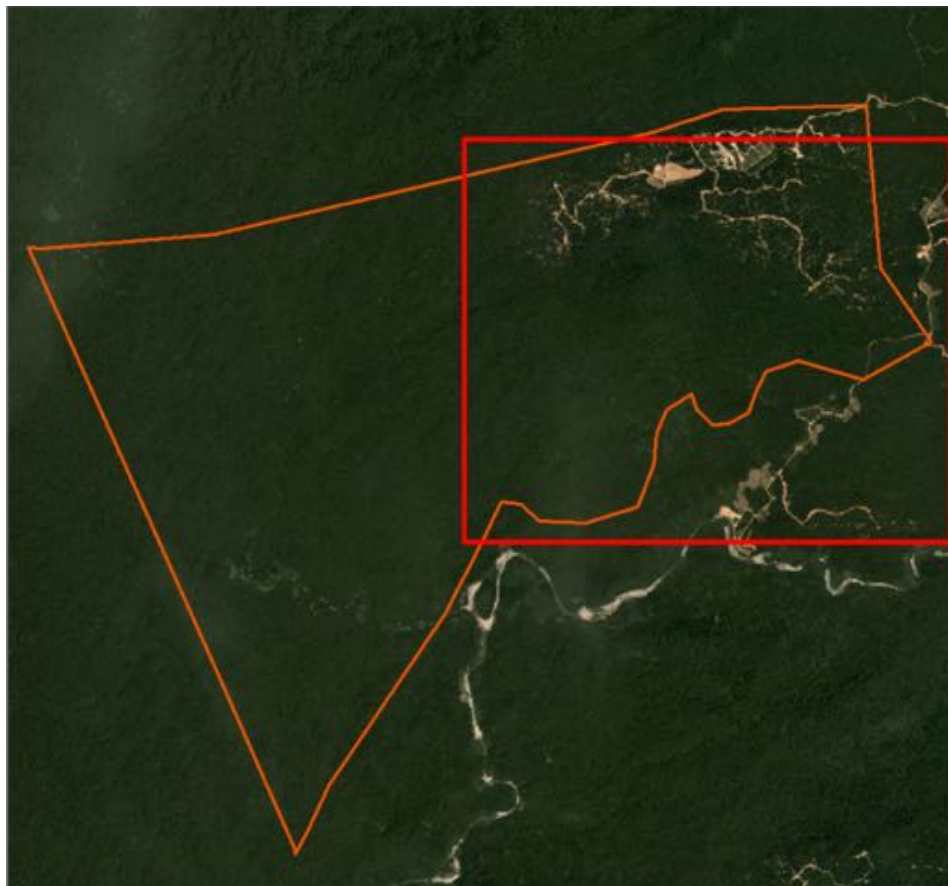
PT Sanggam Harapan Sejahtera is located in Berau Regency, North Kalimantan. The concession covers an area of 5,425 hectares⁹.
(Long 2° 18' 56" N 116° 49' 36" E)



Deforestation

Report	Deforestation (ha)	Peat development (ha)	Peat forest development (ha)	Clearance Prep/Stacking lines (ha)	Time Period
Report 8	503	-	-	-	June 7 – September 3, 2018

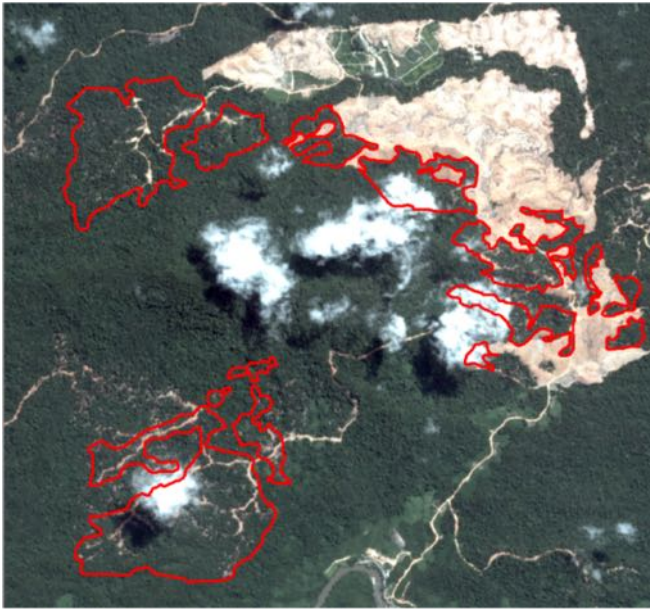
Satellite imagery (see below) shows that between June 7 to September 3, 2018, a total of 503 hectares of forest were cleared in the PT Sanggam Harapan Sejahtera concession (Imagery © 2018 Planet Labs Inc.)



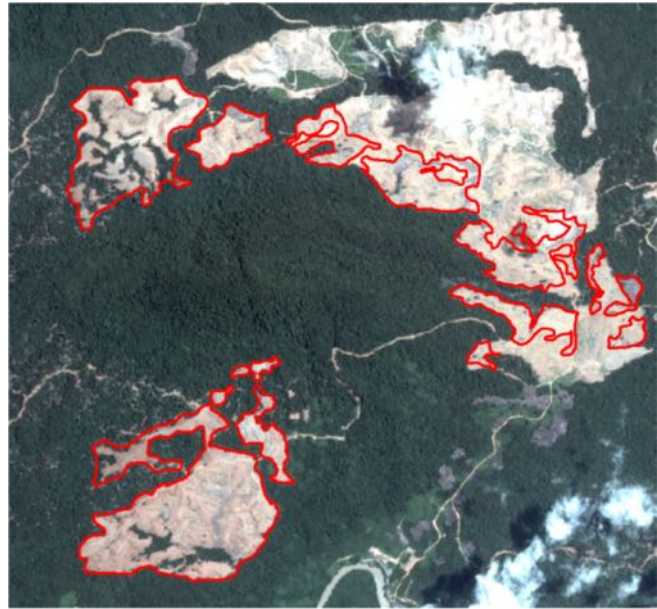
⁹ Dinas Perkebunan Kaltim Tahun 2016

Alert Imagery (before and after satellite images)

Date: June 7, 2018



Date: September 3, 2018



Ownership Information

Group: Venture Resources Pte. Ltd

PT Sanggam Harapan Sejahtera is owned by Venture Resources Pte. Ltd (95%) and PT Gagasan Maju Cemerlang (5%). Venture Resources Pte. Ltd. is a Singaporean financial and insurance services company.

Identity	Ownership	Position
Jimmy Gunawan Linardo	-	President Commissioner
Kho Kuswanda	-	President Director

Supply Chain Information

No supply chain information available.

KUD Restu Bersama

KUD Restu Bersama is located in Berau Regency, North Kalimantan. The concession covers an area of 3,253 hectares¹⁰.
(Long 2° 12' 50" N 117° 57' 29" E)



Deforestation

Report	Deforestation (ha)	Peat development (ha)	Peat forest development (ha)	Clearance Prep/Stacking lines (ha)	Time Period
Report 8	246	-	-	-	July 7 – September 12, 2018

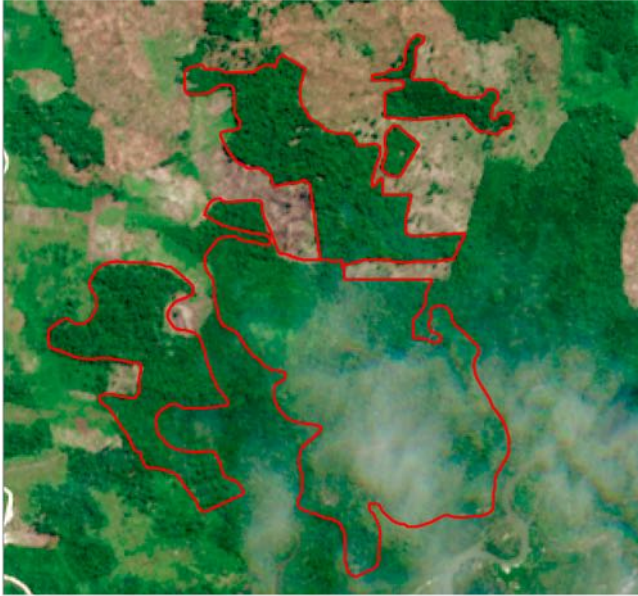
Satellite imagery (see below) shows that between July 7 and September 12, 2018, a total of 246 hectares of forest were cleared in the KUD Restu Bersama concession (Imagery © 2018 Planet Labs Inc.)



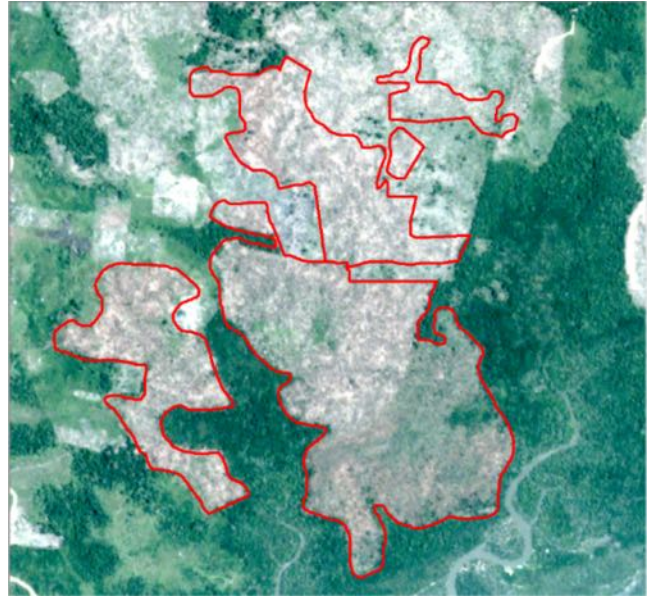
¹⁰ Greenpeace Maps concession

Alert Imagery (before and after satellite images)

Date: July 7, 2018



Date: September 12, 2018



Ownership Information

No ownership information available.

Supply Chain Information

No supply chain information available.

Sources for supply chain information:

Supply chain information included in Rapid Response reports is based on the following publicly disclosed sources. Mighty Earth encourages companies to send updated versions of mill disclosures as soon as they become available and of any decision to terminate supplies with a given company listed in those mill disclosures; please send to rapidresponse@mightyearth.org.

Companies	Source	Link	Date
AAK	Mill disclosure	bit.ly/2uRN6KL	May-18
ADM	Mill disclosure	bit.ly/2wuPNIm	Dec-17
Apical	Mill disclosure	bit.ly/2OnO6Bn	Jun-18
Bunge/Bunge Loders Croklaan	Mill disclosure	bit.ly/2v3tT8j	Mar-18
Cargill	Mill disclosure	bit.ly/2NZ0N5k	Jun-18
Iffco (PT SON)	Financial report SSMS page 106	bit.ly/2LmM2UC	Mar-18
	2017 Annual report ANJ page 248	bit.ly/2O3Tmd4	Mar-18
Fuji Oil	Mill disclosure	bit.ly/2AcVtFN	Jun-18
GAR	Mill disclosure: Tarjun - Pola Kahuripan Inti Sawit, Wana Karya Mulya Kahuripan	bit.ly/2DjQ2Xi	Jun-18
	Mill disclosure: Dumai - Sumber Mukti Kahuripan, Wana Karya Mulya Kahuripan		
	Mill disclosure: Surabaya - Sumber Mukti Kahuripan, Wana Karya Mulya Kahuripan		
	Mill disclosure: Marunda - Sumber Mukti Kahuripan, Wana Karya Mulya Kahuripan		
General Mills	Mill disclosure	bit.ly/2v7hFvn	
Gokul Agro Resources	A2017 Annual report ANJ page 248 (misspelled as Gobel Agro Resources)	bit.ly/2O3Tmd4	Mar-18
Hershey	Mill disclosure	bit.ly/2MRmcsz	Dec-17
Louis Dreyfus	Mill disclosure	bit.ly/2DIDGOf	Dec-17
Mars	Mill disclosure	bit.ly/2KBcYDT	Feb-18
Mondelez	Mill disclosure	bit.ly/2Oh8voJ	Mar-18
Musim Mas	Mill disclosure	bit.ly/2O3LbNS	Jun-18
Nestlé	Mill disclosure	bit.ly/2AbVHgh	Feb-18
Olam	Mill disclosure	bit.ly/2PVdqeX	Jun-18
PepsiCo	Mill disclosure	bit.ly/2NLzGad	2017
P&G	Mill disclosure	bit.ly/2On28TL	2017
PZ Cussons	Mill disclosure	bit.ly/2MxQjds	Mar-18
Reckitt Benckiser	Mill disclosure	bit.ly/2LopMyw	2017
Sime Darby	Mill disclosure SDB Hunson & Knight - Produk Sawitindo Jambi	bit.ly/2DlZApG	Mar-18
	Mill disclosure SDB GH Nha Be ref - Produk Sawitindo Jambi	bit.ly/2MTvXq1	Mar-18
Tunas Baru Lampung	Financial report SSMS page 106	bit.ly/2LmM2UC	Mar-18
Unilever	Mill disclosure	bit.ly/2pswGp9	2017
Wilmar	Mill disclosure WINA Gresik - Katingan Indah Utama, Surya Inti Sawit Kahuripan	bit.ly/2OFGxmw	Mar-18
	Mill disclosure WINA Pelintung - Produk Sawitindo Jambi	bit.ly/2I4drdQ	Mar-18
	Mill disclosure MNS Bitung - Sumber Mukti Kahuripan	bit.ly/2OGtlxy	Mar-18