



MIGHTY EARTH

# Mighty Earth Rapid Response Report 3

PT Rimbun Sawit Papua, PT Sawit Mandiri Lestari, PT Agriprima Cipta Persada,  
PT Agrinusa Persada Mulia, PT Permata Putera Mandiri (Blok I), PT Citra Palma  
Pertiwi 2, PT Borneo Citra Palma Abadi

**February 2018**

Prepared with support from Aidenvironment and MapHubs

---

<b>PT Rimbun Sawit Papua</b>	5
Concession Information	5
Deforestation	5
Alert Overview	5
Alert Imagery	6
Ownership Information	6
Supply Chain Information	6
<b>PT Sawit Mandiri Lestari</b>	7
Concession Information	7
Deforestation	7
Alert Overview	7
Alert Imagery	8
Ownership Information	8
Supply Chain Information	8
<b>PT Agriprima Cipta Persada</b>	9
Concession Information	9
Deforestation	9
Alert Overview	9
Alert Imagery	10
Ownership Information	10
Supply Chain Information	10
<b>PT Agrinusa Persada Mulia</b>	11
Concession Information	11

Deforestation	11
Alert Overview	11
Alert Imagery	12
Ownership Information	12
Supply Chain Information	12
<b>PT Permata Putera Mandiri (Blok I)</b>	13
Concession Information	13
Deforestation	13
Alert Overview	13
Alert Imagery	14
Ownership Information	14
Supply Chain Information	15
<b>PT Citra Palma Pertiwi 2</b>	16
Concession Information	16
Deforestation	16
Alert Overview	17
Alert Imagery	17
Ownership Information	17
Supply Chain Information	18
<b>PT Borneo Citra Palma Abadi</b>	19
Concession Information	19
Deforestation	19
Alert Overview	19
Alert Imagery	20

Ownership Information 20

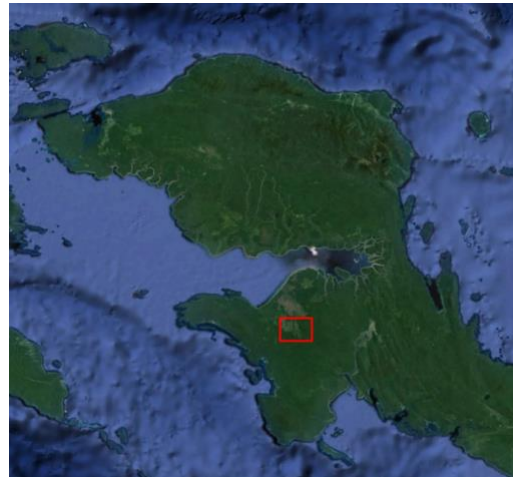
Supply Chain Information 20



## PT Rimbun Sawit Papua

### Concession Information

PT Rimbun Sawit Papua (PT RSP) is located in West Papua province. It covers an area of 30,596 hectares.  
(Long 133° 6'58.80"E, Lat 2°55'32.52"S)



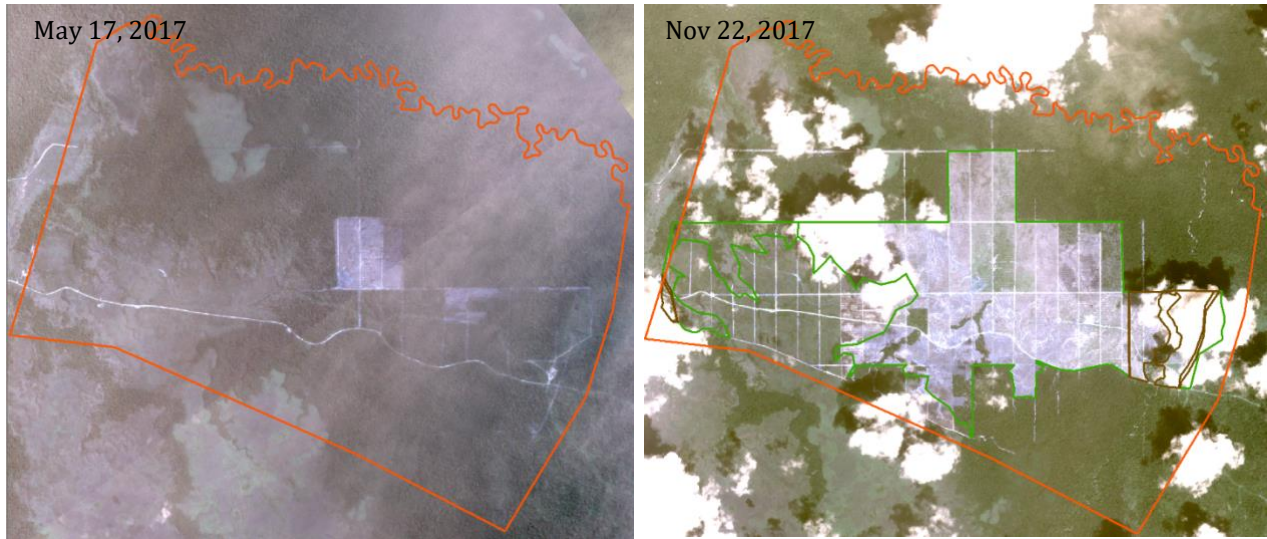
### Deforestation

412 hectares of forest alerts detected in October - November 2017. Review of the satellite imagery shows that 1,197 hectares of forest (1,070 ha) and peat forest (127 ha) were cleared in 2017.

#### Alert Overview



## Alert Imagery



Note: Green Line = Forest, Brown Line = Peat.

## Ownership Information

PT Rimbun Sawit Papua is ultimately owned by Jeff Setiawan (direct shares), Ir. Daud (through PT Palmandiri Plantation), Junus Sutiono and Watson Dharma. Mr. Junus Sutiono and Mr. Watson Dharma own PT RSP through PT Mulia Abadi Lestari, one of the shareholding companies of PT Duta Rendra Mulya, a Salim owned plantation company.

Identity	Ownership	Position
Mr. Jeff Setiawan Winata	20%	Commissioner
Mr. Wiandi Halisantoso	-	President director
Mr. Rapman Hutabarat	-	Director
Mr. Ir. Daud	-	President commissioner

## Supply Chain Information

Not available



## PT Sawit Mandiri Lestari

### Concession Information

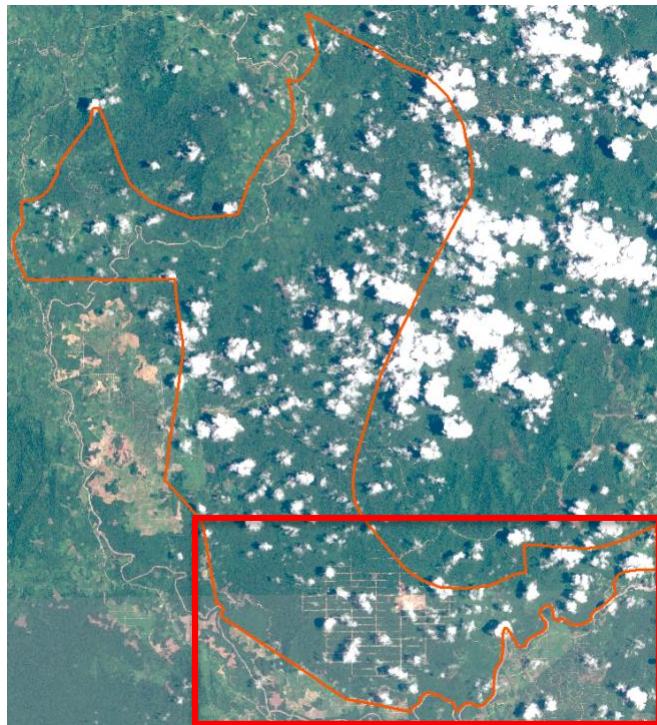
PT Sawit Mandiri Lestari (PT SML) is located in Central Kalimantan province. It covers an area of 27,056 hectares.  
(Long 111°12'25.40"E, Lat 1°53'51.50"S)



### Deforestation

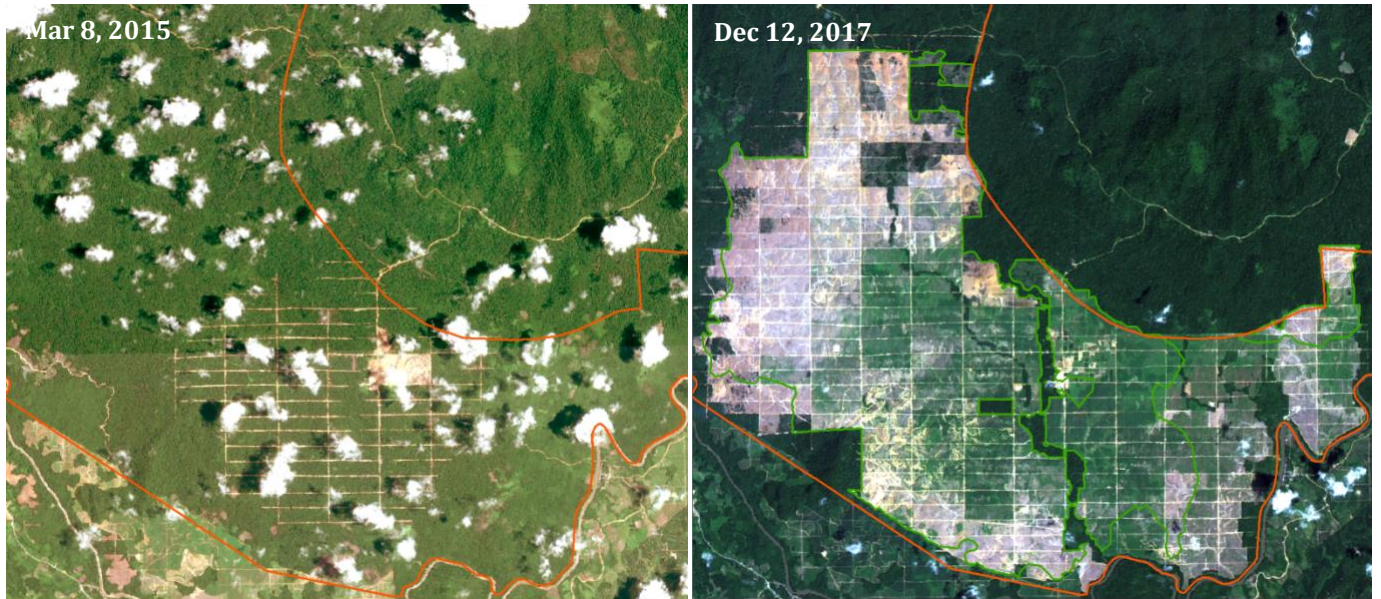
We detected 1,348 hectares of forest alerts in October of 2017. After inspecting the imagery, we found an area of 5,600 hectares cleared beginning in March 2016 and continuing through December 2017.

### Alert Overview





## Alert Imagery



### Ownership Information

PT Sawit Mandiri Lestri was sold by Sawit Sumbermas Sarana (SSMS) in December 2015 while there was a RSPO complaint pending initiated by the NGOs Environmental Investigation Agency and JPIK Kalteng. The company is, therefore, no longer subject to the RSPO's Principles and Criteria. PT SML is 60% owned by Rinawati and 40% owned by Hamidi Mukhdar Said, through PT Metro Jaya Lestari.

No information could be found concerning Rinawati but Hamidi Mukhdar Said is a member of Commission IV of the house of representatives of Indonesia. The director mentioned in PT SML's notary act is also the commercial director of SSMS (Ramzi Sastra) and the address of PT SML is the same as the address of another plantation company belonging to SSMS. This concession still appears to be connected to the Abdul Rasyid family.

### Supply Chain Information

Not available



## PT Agriprima Cipta Persada

### Concession Information

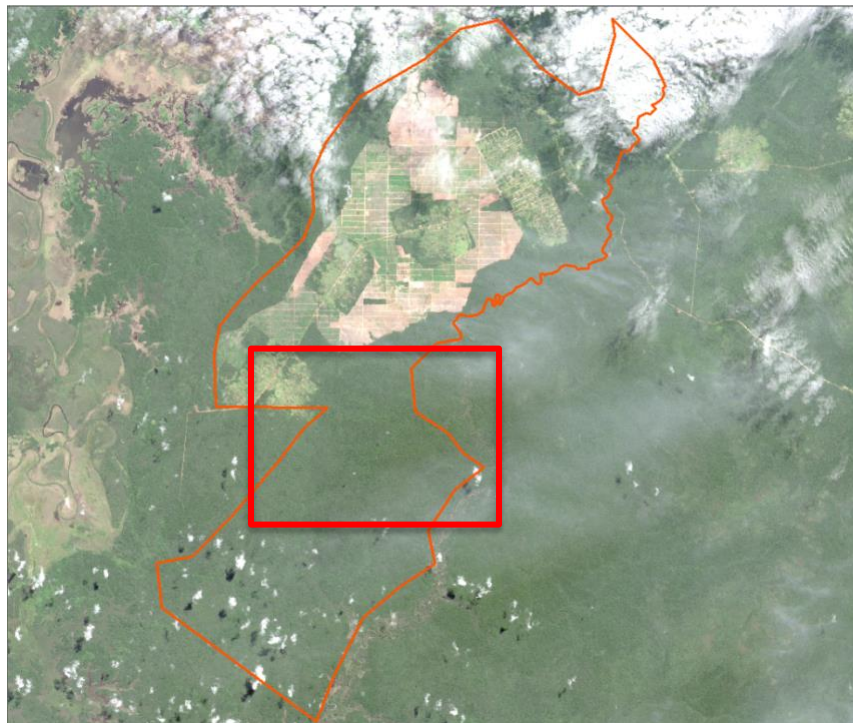
PT Agriprima Cipta Persada (PT ACP) is located in Papua province. It covers an area of 59,796 hectares.  
(Long 140°32'15.31"E, Lat 7°26'12.59"S)



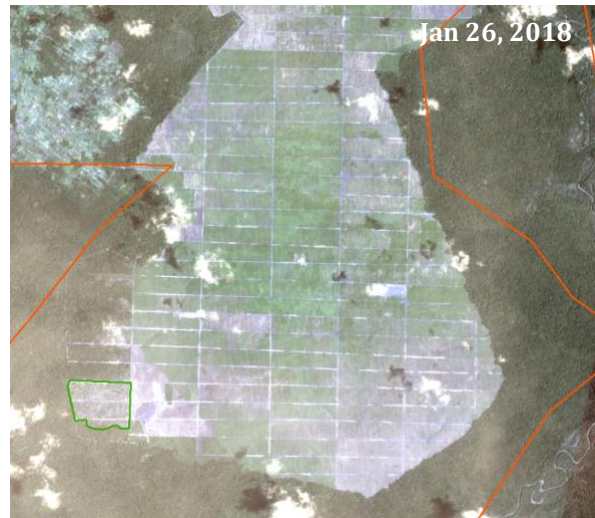
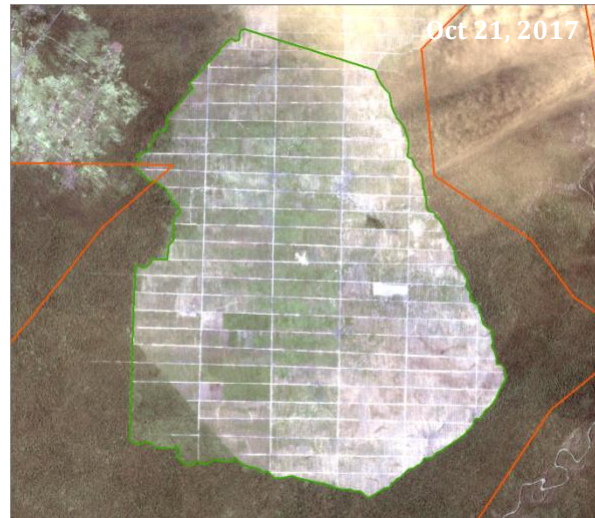
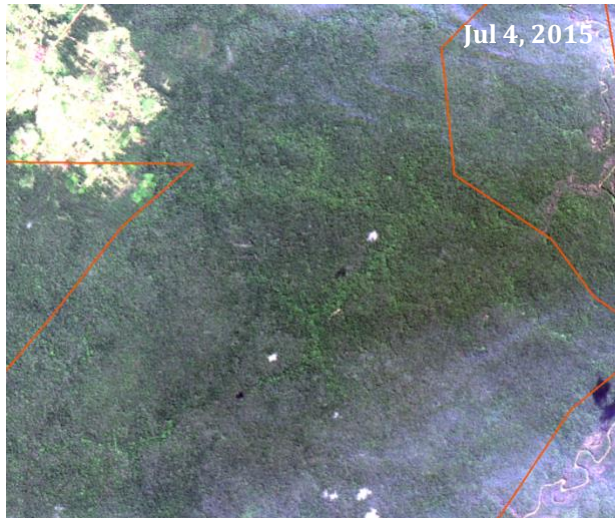
### Deforestation

2,847 hectares cleared in 2015 and 2016. Alerts detected in 2017 appear to be residual alerts (due to cloudy satellite imagery) and not early 2017 clearance. However, we see evidence of a new road cut in November - December 2017 and clearance of 70 hectares in November 2017 - January 2018.

### Alert Overview



## Alert Imagery



## Ownership Information

PT ACP is owned in part by GAMA Group.

## Supply Chain Information

The main known buyers of GAMA Group are Wilmar, GAR, IOI, Olam, ADM and Cargill (based on information available on companies' sustainability dashboards).



## PT Agrinusa Persada Mulia

### Concession Information

PT Agrinusa Persada Mulia (PT APM) is located in Papua province. It covers an area of 29,423 hectares.

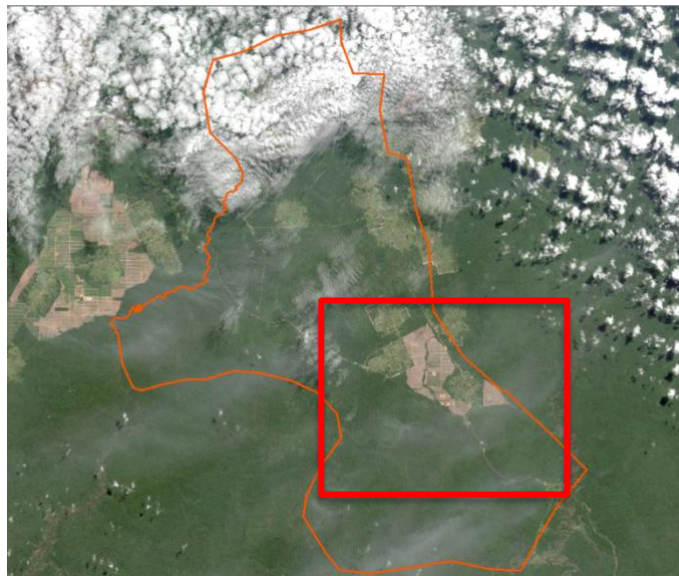
(Long 140°42'31.45"E, Lat 7°25'35.32"S)



### Deforestation

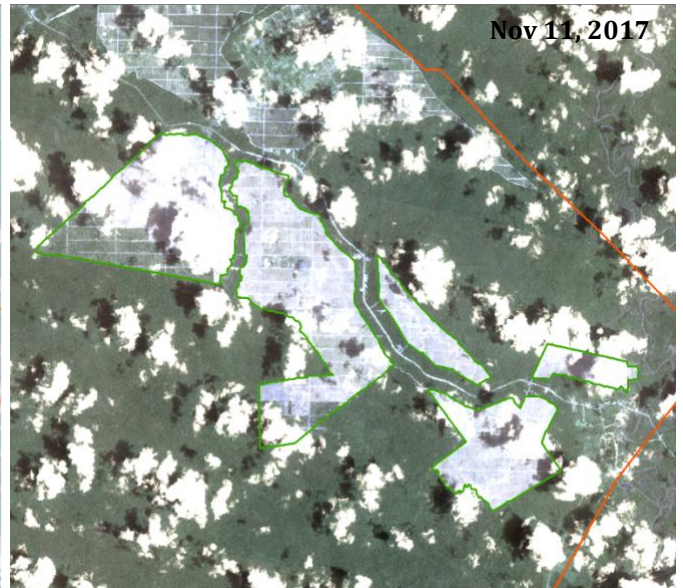
We found 2,361 hectares of clearance between May and November 2017.

#### Alert Overview





## Alert Imagery



## Ownership Information

PT APM is owned in part by GAMA Group.

## Supply Chain Information

The main known buyers of GAMA Group are Wilmar, GAR, IOI, Olam, ADM and Cargill (based on information available on companies' sustainability dashboards).

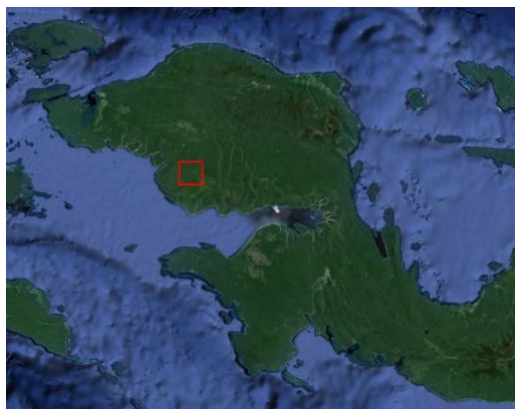
---

## PT Permata Putera Mandiri (Blok I)

### Concession Information

PT Permata Putera Mandiri Blok I (PT PPM) is located in West Papua province. It covers an area of 34,147 hectares.

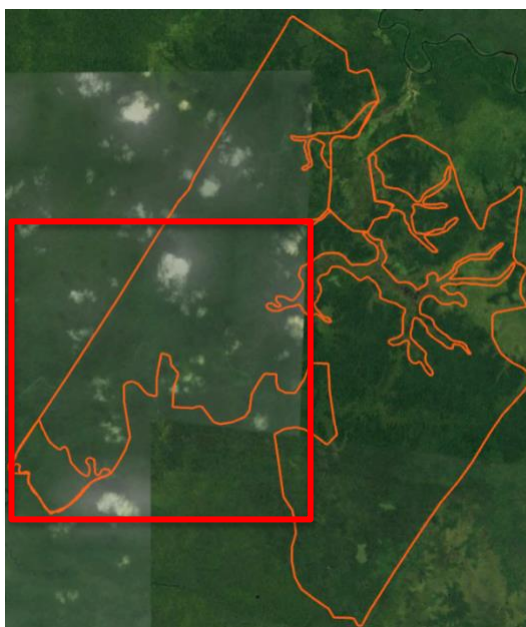
(Long 132°21'3.44"E, Lat 1°53'19.68"S)



### Deforestation

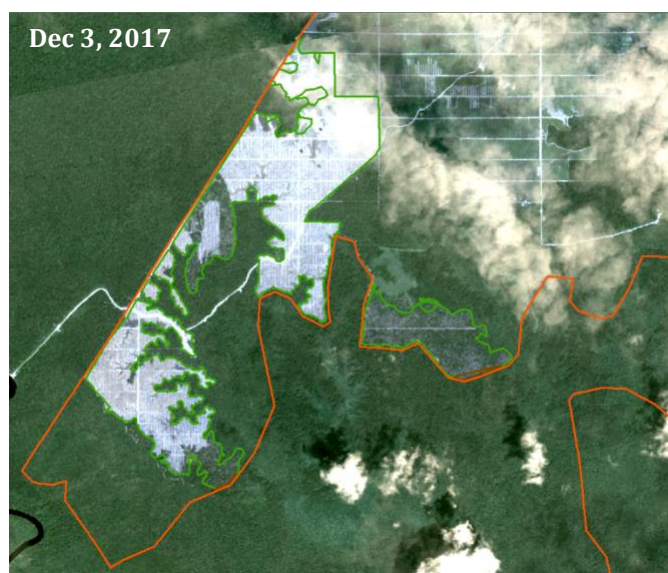
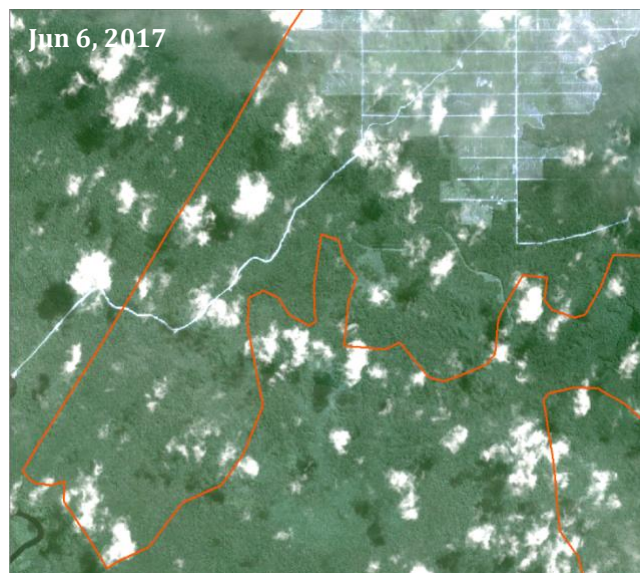
We found 668 hectares of clearance between June 2017 and December 2017.

### Alert Overview





## Alert Imagery



## Ownership Information

Austindo Nusantara Jaya Agri

PT PPM is owned by Austindo Nusantara Jaya Agri. The group was suspended in 2015 by its buyers with integrated sustainability policies over non compliant deforestation activities in PT PPM. The company stopped clearance activities on the ground for two years. Deforestation started again in late 2017.

(Shares in ANJ Tbk and not ANJ Agri)

Identity	Ownership	Position
Mr. Geetha Govindan	-	President director
Mr. Sucipto Maridjan	-	Director
Mrs. Nopri Pitoy	-	Director
Mr. Aloysius D'Cruz	-	Director
Mr. Handi Belamande Syarif	-	Director
Mr. Sonny Sunjaya Sukada	-	Director
Mrs. George Santosa Tahija	28.99%	President Commissioner
Mrs. Istini Tatiek Siddharta	-	Commissioner
Mr. Anastasius Wahyuhadi	-	Commissioner

## Supply Chain Information

As of Q3 in 2017, the main customers of Austindo Nusantara Jaya are Felda Iffco (FGV and Tabung Haji's PT Synergy Oil Nusantara Refinery located in Batam, Indonesia), Gokul Agro Resources (an Indian processor and manufacturer of edible and non edible oils) and Kuala Lumpur Kepong Berhad (through its PT Adei Plantation and Industry in Riau).

---

## PT Citra Palma Pertiwi 2

### Concession Information

PT Citra Palma Pertiwi 2 (PT CPP2) is located in East Kalimantan province. It covers an area of approximately 7,584 hectares.

(Long 115°55'32.78"E, Lat 0°57'3.38"S)



### Deforestation

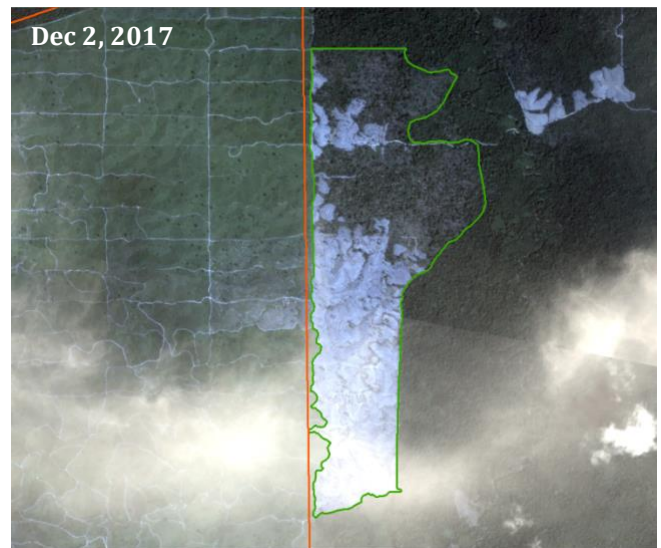
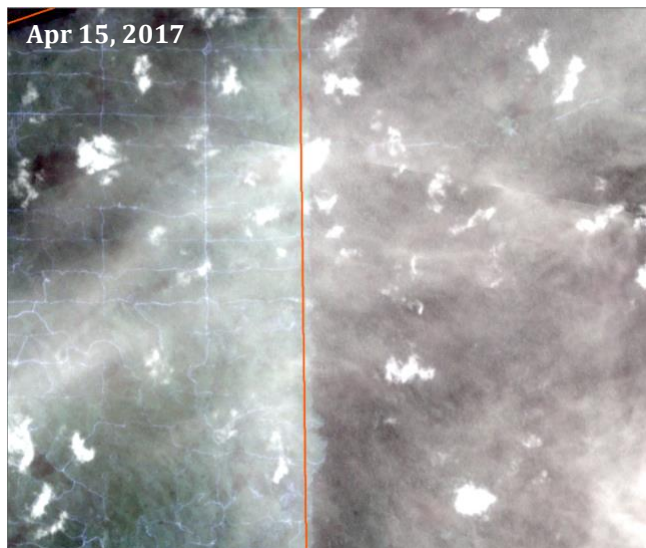
CPP2 is owned by the same company as PT Borneo Citra Palma Abadi (PT BCPA), featured below. Both CPP2 and BCPA have cleared significant amounts of forest within the past year. In CPP2, there is evidence of cutting roads with the likely intention of further clearance. In BCPA, there is thinning clearance in the southeast section of the concession. In the combined analysis we found a total of 593 hectares of clearance in 2017 in BCPA and CPP2.

## Alert Overview



Alert

Imagery



## Ownership Information

Both PT CPP2 and BCPA belong to PT Bangka Bumi Lestari, ultimately owned by Mr. Sulaidy (99.9% shares). Mr Sulaidy used to be a shareholder of Surya Dumai Industri Tbk until 2014 and seems to be related to Mr. Martias Fangiono (owner of Surya Dumai).



## Supply Chain Information

The nearest mill is PT Ketapang Agro Lestari, owned by First Resources. First Resources has stated that it does not accept supplies from BBL, so we do not know where BBL's supplies are being sold. (The plantation is very young, so it may not yet have reached production yet).



---

## PT Borneo Citra Palma Abadi

### Concession Information

PT Borneo Citra Palma Abadi (PT BCPA) is located in East Kalimantan province. It covers an area of 3,630 hectares.

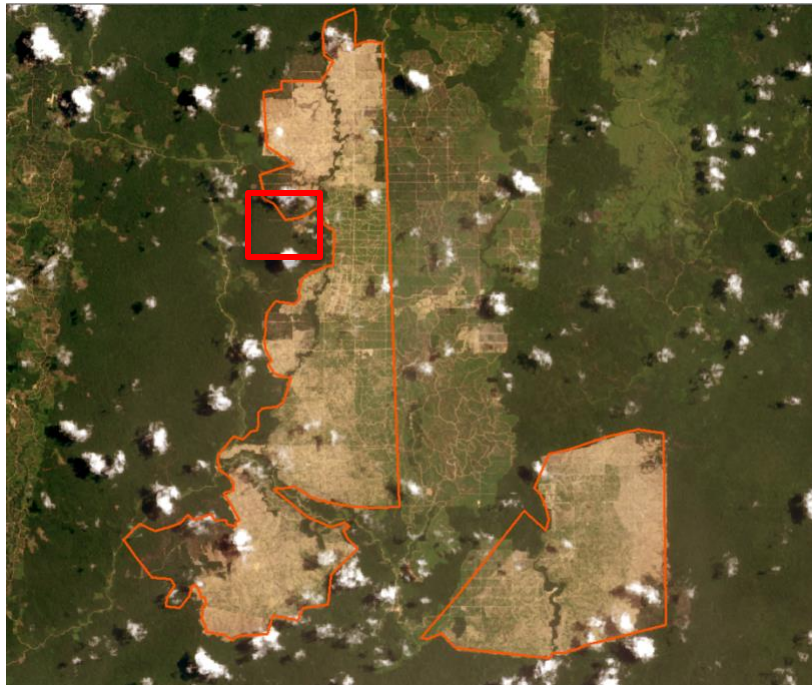
(Long 115°50'59.84"E, Lat 0°54'10.86"S)



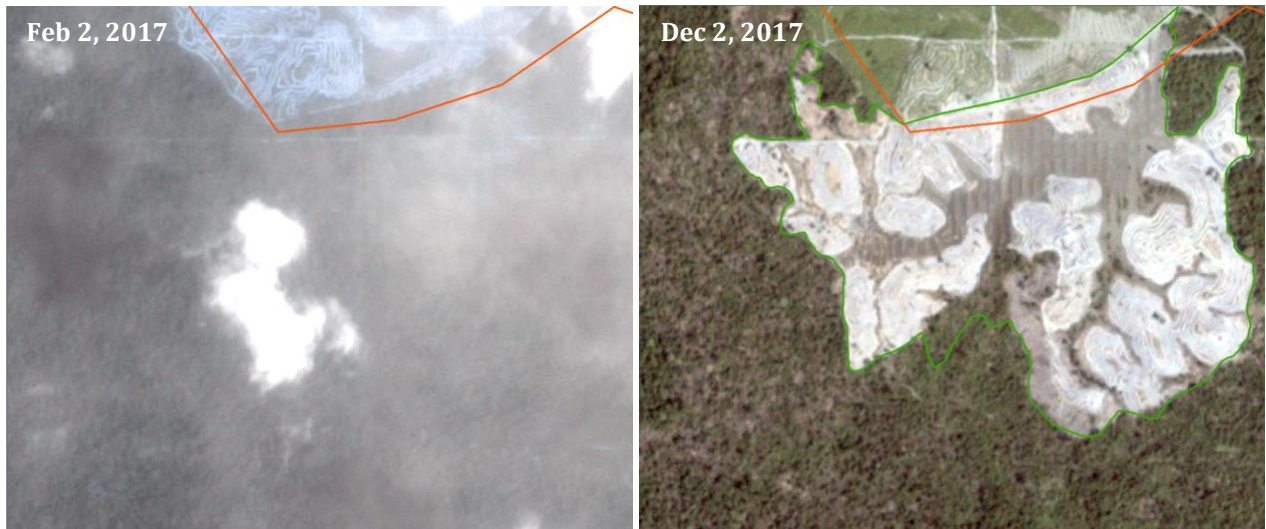
### Deforestation

Both BCPA and CPP2 have cleared significant amounts of forest within the past year. In CPP2, there is evidence of cutting roads with the likely intention of further clearance. In BCPA, there is thinning clearance in the southeast section of the concession. In the combined analysis we found a total of 593 hectares of clearance in 2017 in BCPA and CPP2.

### Alert Overview



## Alert Imagery



### Ownership Information

Both PT CPP2 and BCPA belong to PT Bangka Bumi Lestari, ultimately owned by Mr. Sulaidy (99.9% shares). Mr Sulaidy used to be a shareholder of Surya Dumai Industri Tbk until 2014 and seems to be related to Mr. Martias Fangiono (owner of Surya Dumai).

### Supply Chain Information

The nearest mill is PT Ketapang Agro Lestari, owned by First Resources. First Resources has stated that it does not accept supplies from BBL, so we do not know where BBL's supplies are being sold. (The plantation is very young, so it may not yet have reached production yet).