

Rapid Response

Palm Oil, Report 17



July 2019

Prepared with support from MapHubs

Table of Contents

Cases identified using Planet imagery

Indonesian Companies

Evershine Asset Corporation / Everbright Resources Corporation: PT Anugerah Makmur Sejati	4
Incasi Raya Group: PT Arvenasepakat	7
CB Inudustrial Product Holding / Jhonlin Group: PT Kurun Sumber Rezeki	10
Makin Group: PT Mekar Karya Kahuripan	13
Dharma Satya Nusantara Tbk (DSN Group): PT Prima Sawit Andalan	17
Kirana Megatara: PT Putra Katingan Pratama	20

Malaysian Companies

RGE Group: PT Usaha Sawit Unggul	23
Shin Yang Holding Sdn Bhd / Sarawak Oil Palm Bhd: Dataran Linau Sdn Bhd (Lot 1 Block 14 Murum LD)	26
Yuwang Group: Empresa (M) Sdn Bhd (OT/0351)	29
Rimbunan Hijau: Poh Zhen Sdn Bhd	32
WTK Group: Southwind Plantation Sdn Bhd	35
Samling Group: Syarikat Samling Timber Sdn Bhd (LPF 0014)	38
Woodman Group: Adong Estate, Part of LPF 0004	41
Woodman Group: Liku Estate, Part of LPF 0004	44

Additional cases identified using filtered GLAD alerts

New Cases

Unknown Group: PT Agro Lintas Nusantara	47
Unknown Group: PT Triomas Forestry Development Indonesia	47
Unknown Group: PT Ruta Jona Lestari	47
Cilandry Anky Abadi Group: PT Citra Agro Abadi	47
First Borneo Group: PT Wahana Hamparan Hijau	47
First Borneo Group: PT Khatulistiwa Agro Abadi	47
Unknown Group: Koperasi Usaha Mandiri	48
Unknown Group: PT Katingan Hijau Lestari	48

Sources for supply chain information: <https://bit.ly/32sPnez>

Supply chain information included in Rapid Response reports is based on latest publicly versions of mill disclosures, recent export data, grievance logs and other available data. Mighty Earth encourages companies to send updated versions of mill disclosures as soon as they become available and any decision to suspend supplies with a given group/company listed in those mill disclosures; please send to rapidresponse@mightyearth.org.

Table of Contents (cont.)

Additional Cases Identified Using Filtered GLAD Alerts

New Cases (cont.)

Unknown Group: PT Tani Subur Makmur	48
Unknown Group: PT Duet Rija	48
Tadmax Sdn Bhd: PT Trimegah Karya Utama	48
Bukit Berlian Plantation Group: PT Ginang Fohu Plantation	48
Unknown Group: PT Uniseraya	48
JSK International Co Ltd (Korea): PT Future Agropia Indonesia	48
Unknown Group: PT Cipta Karya Sesayap	48
Double Dynasty: Hua Seng Plantation Sdn Bhd	48
Pelita Holdings Sdn Bhd: Pelita Holdings Sdn Bhd	48
Pelita Holdings Sdn Bhd: Pelita Ilham Sdn Bhd	48
Kwantas Corporation: Kwantas Corporation	48
Hayel Saeed Anam (HSA) Group: PT Graha Kencana Mulia	48

Repeat Cases

Unknown Group: PT Laot Bangko	49
PT Bakrie Sumatra Plantations Tbk: PT Mentobi Mitra Lestari	49
Best Group: PT Wanasawit Subur Lestari	49
Indonusa Group: PT Internusa Jaya Sejahtera	49
Unknown Group: PT Persada Era Agro Kencana	49
Genting Group: PT Permata Sawit Mandiri	49
Unknown Group: PT Sumber Sawit Mitrajaya	49
Unknown Group: PT Kayan Plantation	49
Genting Group: PT Citra Sawit Cemerlang	49
Salim/IndoGunta: PT Rimbun Sawit Papua	49
PT Sawit Sumbermas Sarana Tbk: PT Sawit Mandiri Lestari	49
Unknown Group: PT Ichiko Agro Lestari	49
Kwantas Corporation: Kwantas Pelita	49
Samling Group: Samling Reforestation (Bintulu) Sdn Bhd: LPF/0008 Marudi Estate	50
Hayel Saeed Anam Group: PT Kartika Cipta Pratama	50
Unknown Group (former Makin Group): PT Krida Darma Kahuripan	50
Unknown Group: PT Marita Makmur Jaya	50
Evershine Asset Corporation and Everbright Resources Corporation: PT Kapuasindo Palm Industri	50
Alas Kusuma: PT Kusuma Alam Sari	50
Unknown Group: PT Prasetya Mitra Muda (Block II)	50
Unknown Group: PT Pipit Citra Persada	50
Unknown Group: PT Rimba Karya Rayatama	50
Korindo: PT Berkat Cipta Abadi	50

Group: Evershine Asset Corporation / Everbright Resources Corp.

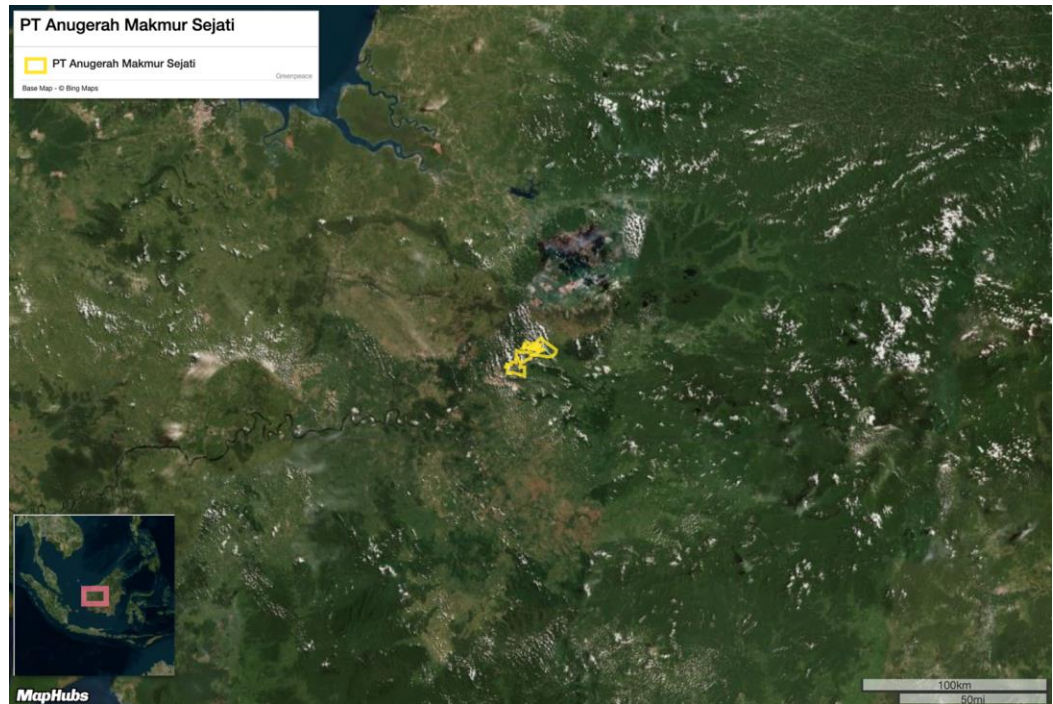
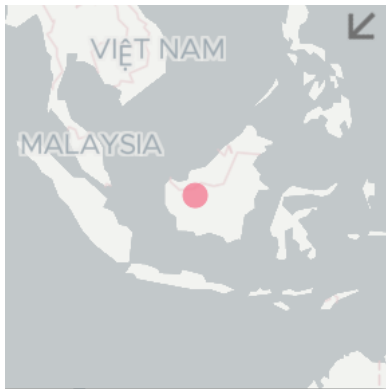
PT Anugerah Makmur Sejati

Location: 0.4105, 111.9

Deforestation and/or peat development

Report	Deforestation (ha)	Peat development (ha)	Peat forest development (ha)	Clearance prep/Stacking lines (ha)	Time period
Report 17	4	-	-	-	Feb 25 – June 16, 2019

Satellite imagery (see below) shows that between February 25, 2019 and June 16, 2019 a total of 4 hectares of forest were cleared in the PT Anugerah Makmur Sejati concession. (Imagery © 2019 Planet Labs Inc.)



Alert Imagery (before and after satellite images)

Date: February 25, 2019



Date: June 16, 2019



Ownership Information

PT Anugerah Makmur Sejati is owned by Evershine Asset Corporation and Everbright Resources Corporation, ultimately through PT Kencana Agung Lestari.² See the case for PT Kapuasindo Palm Industry in Rapid Response report 12, for another case related to Evershine Asset Corporation and Everbright Resources Corporation.

2. Notary Act for PT Kencana Agung Lestari

Supply Chain Information

Supply Chain Links: Traders	AAK	ADM	Fuji Oil	GAR
PT Anugerah Makmur Sejati				
Evershine Asset Corporation / Everbright Resources Corporation	x	x	x	x

Supply Chain Links: Consumer Brands	Avon	Colgate- Palmolive	General Mills	Hershey	Kellogg's	Mars
PT Anugerah Makmur Sejati						
Evershine Asset Corp. / Everbright Resources Corp	x	x	x	x	x	x

Supply Chain Links: Consumer Brands	Nestle	PepsiCo	P&G	Reckitt Benckiser	Unilever
PT Anugerah Makmur Sejati					
Evershine Asset Corp. / Everbright Resources Corp.	x	x	x	x	x

Group: Incasi Raya

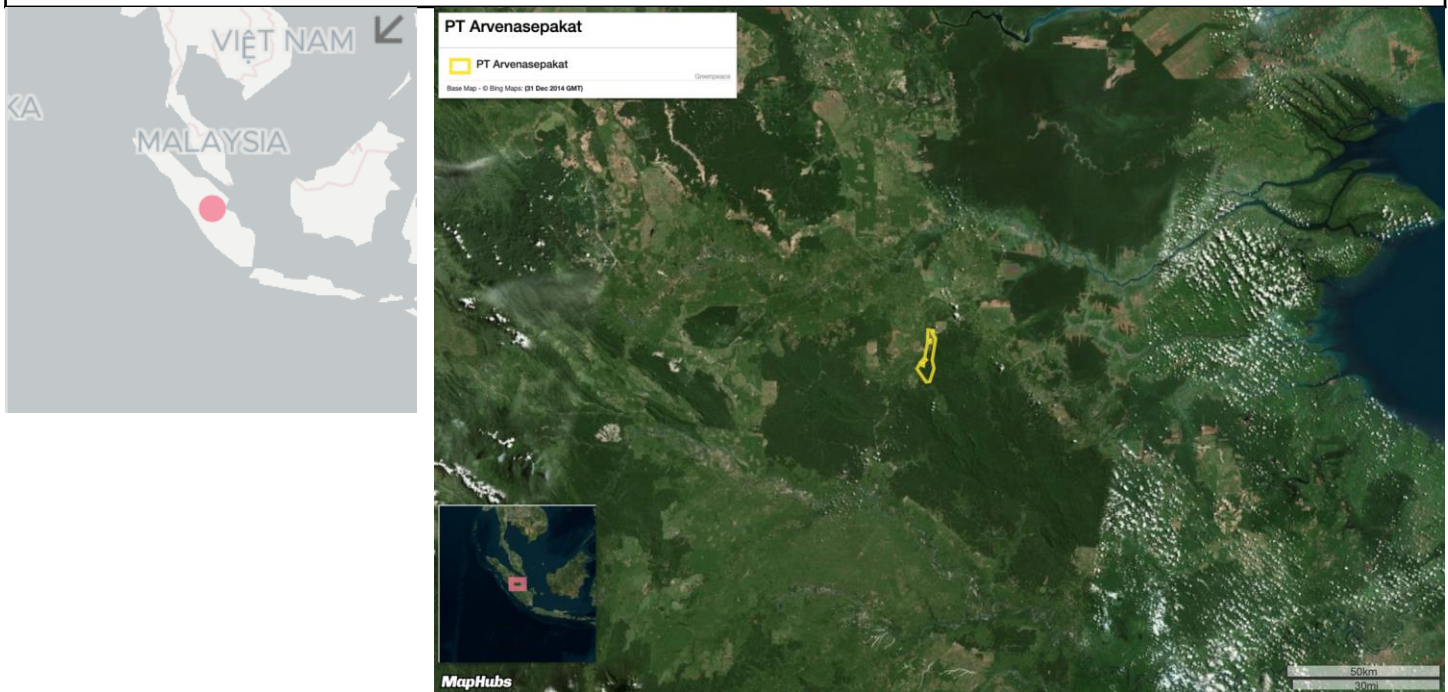
PT Arvenasepakat

Location: -0.7945, 102.3

Deforestation and/or peat development

Report	Deforestation (ha)	Peat development (ha)	Peat forest development (ha)	Clearance prep/Stacking lines (ha)	Time period
Report 17	9	-	-	-	March 19 – June 2, 2019

Satellite imagery (see below) shows that between March 19, 2019 and June 2, 2019 a total of 9 hectares of forest were cleared in the PT Arvenasepakat concession. (Imagery © 2019 Planet Labs Inc.)



Alert Imagery (before and after satellite images)

Date: March 19, 2019



Date: June 2, 2019



Ownership Information

PT Arvenasepakat is part of the Incasi Raya Group, owned by the Gunawan family. PT Arvenasepakat is owned through PT Bumimekar Inti Lestari and PT Gunas Investa.³

3. Notary Act for PT Arvenasepakat

Supply Chain Information

Supply Chain Links: Traders	AAK	ADM	Bunge	Fuji Oil	KLK	Musim Mas	Sime Darby	Wilmar
PT Arvenasepakat								
Incasi Raya Group	x	x	x	x	x	x	x	x

Supply Chain Links: Consumer Brands	Avon	Colgate-Palmolive	General Mills	Hershey	Kellogg's	Mars	Nestle
PT Arvenasepakat							
Incasi Raya Group	x	x	x	x	x	x	x

Supply Chain Links: Consumer Brands	PepsiCo	P&G	PZ Cussons	Reckitt Benckiser	Unilever
PT Arvenasepakat					
Incasi Raya Group	x	x	x	x	x

Group: CB Industrial Product Holding / Jhonlin Group

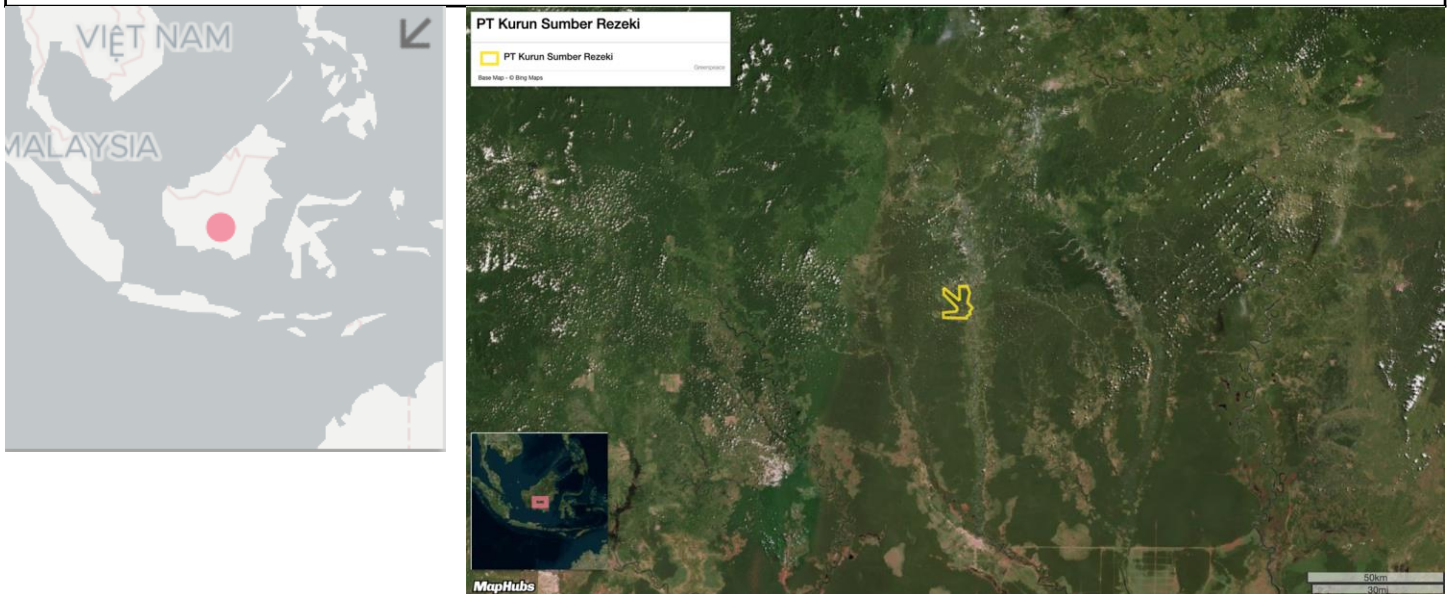
PT Kurun Sumber Rezeki

Location: -1.478, 113.8

Deforestation and/or peat development

Report	Deforestation (ha)	Peat development (ha)	Peat forest development (ha)	Clearance prep/Stacking lines (ha)	Time period
Report 17	65	-	-	-	Feb. 20 – July 8, 2019

Satellite imagery (see below) shows that between February 20, 2019 and July 8, 2019 a total of 65 hectares of forest were cleared in the PT Kurun Sumber Rezeki concession. (Imagery © 2019 Planet Labs Inc.)



Alert Imagery (before and after satellite images)

Date: Feb. 20, 2019



Date: July 8, 2019



Ownership Information

PT Kurun Sumber Rezeki is a joint-venture between PT Jhonlin Agro Mandiri, Jhonlin Group (80%) and CB Industrial Product Holding Bhd, CBIP Group (20%).⁴

CBIP has at least two joint ventures with Tradewinds Plantation Bhd, Solar Green Sdn Bhd (CBIP holds 50%) and Kumpulan Kris Jati Sdn Bhd (CBIP 30%).⁵ These companies are named in a recent report by Earthsight, which claims that CBIP has 'destroyed 1,126 hectares of forest in 2018 for palm oil cultivation in Indonesia' and that the group has been 'caught up in a major land rights corruption scandal.'

The Earthsight report further states:

CBIP entered into an agreement with relatives and close associates of the then Bupati (elected head) of Gunung Mas in 2012 to purchase from them a majority interest in four shell companies they had incorporated.

These firms were immediately thereafter issued with oil palm permits by the Bupati, Hambit Bintih, for almost 60,000 hectares of land: an area three times the size of Washington DC. Much of the land was covered by dense forest, but the boundaries of the new permits also encompassed the traditional lands of thousands of local people.

The process of issuing such permits usually takes months, but by forgoing any environmental impact assessment and not consulting affected communities, the illegal deals were promptly passed. Locals were paid as little as 400 rupiah (\$300) per hectare by CBIP for land which was reportedly worth much more. One local described the prices as 'murder'.

Earthsight's full report can be [read here](#). Mighty Earth expects palm oil traders to review the report and enter a grievance into their system regarding CBIP and Tradewinds.

4. p. 117 www.cbip.com.my/main/pdf/ar2018.pdf; Notary Act for PT Kurun Sumber Rezeki

5. Company profiles from Company Commission of Malaysia

Supply Chain Information

Supply Chain Links: Traders	AAK	ADM	Bunge	Cargill	Fuji Oil	Inter-Continental Oil & Fats Pte Ltd (ICOF)	IOI	KLK
PT Kurun Sumber Rezeki								
CB Industrial Product Holding Bhd / Jhonlin Group			x	x				x
Solar Green Sdn Bhd		x		x	x			
Kumpulan Kris Jati Sdn Bhd	x	x		x	x		x	x
CBIP/ Tradewinds	x	x	x	x	x	x	x	x

Supply Chain Links: Traders	Louis Dreyfus	Mewah	Musim Mas	Olam	Pacific Inter-Link (PIL) (via ICOF)	Sime Darby	Wilmar
PT Kurun Sumber Rezeki							
CB Industrial Product Holding Bhd / Jhonlin Group				x			
Solar Green Sdn Bhd		x				x	
Kumpulan Kris Jati Sdn Bhd	x	x		x		x	x
CBIP/ Tradewinds	x	x	x	x	x	x	x

Supply Chain Information (continued)

Supply Chain Links: Consumer Brands	Avon	Colgate-Palmolive	General Mills	Hershey	ISF	Kellogg's	Mars
PT Kurun Sumber Rezeki							
CBIP / Jhonlin Group		x	x				x
Solar Green Sdn Bhd	x	x	x	x		x	x
Kumpulan Kris Jati Sdn Bhd	x	x	x	x		x	x
CBIP/ Tradewinds	x	x	x	x	x	x	x

Supply Chain Links: Consumer Brands	Mondelez	Nestle	P&G	PepsiCo	PZ Cussons	Reckitt Benckiser	Unilever
PT Kurun Sumber Rezeki							
CBIP / Jhonlin Group	x					x	x
Solar Green Sdn Bhd	x	x	x	x		x	x
Kumpulan Kris Jati Sdn Bhd	x	x	x	x	x	x	x
CBIP / Tradewinds	x	x	x	x	x	x	x

Group: Makin

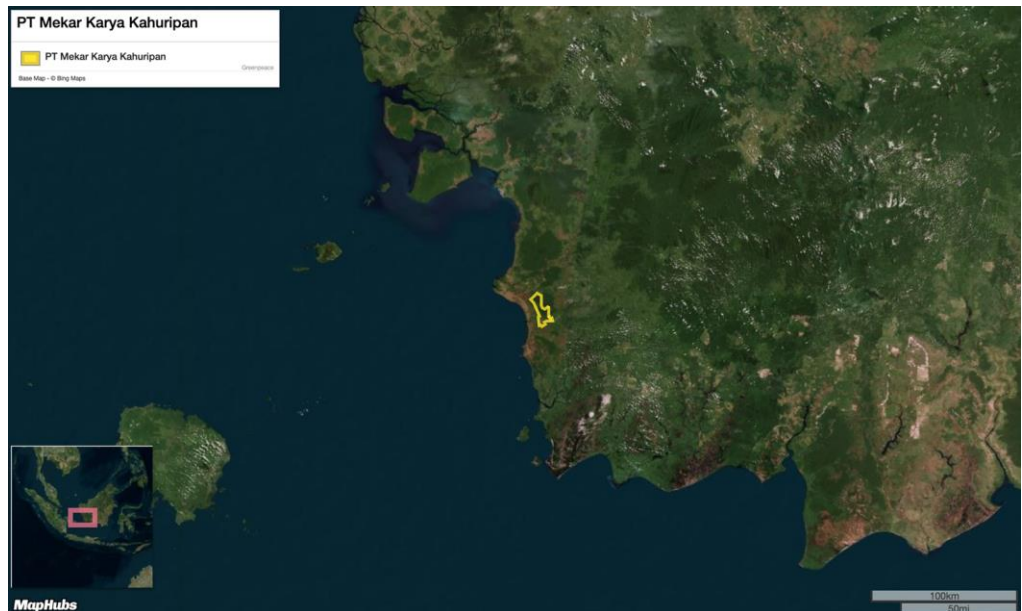
PT Mekar Karya Kahuripan

Location: -1.883, 110.1

Deforestation and/or peat development

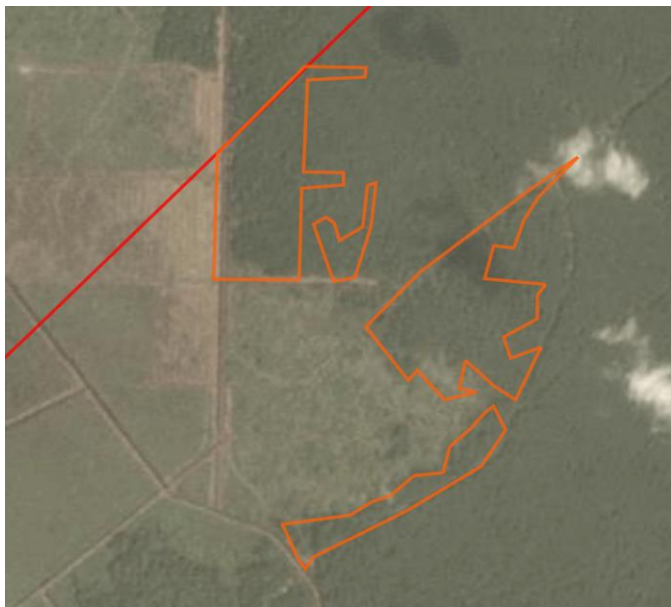
Report	Deforestation (ha)	Peat development (ha)	Peat forest development (ha)	Clearance prep/Stacking lines (ha)	Time period
Report 17	-	-	25	-	Jan 5 – June 29, 2019

Satellite imagery (see below) shows that between January 5, 2019 and June 29, 2019 a total of 25 hectares of peat forest were cleared in the PT Mekar Karya Kahuripan concession. (Imagery © 2019 Planet Labs Inc.)



Alert Imagery (before and after satellite images)

Date: January 5, 2019



Date: June 29, 2019



Ownership Information

PT Mekar Karya Kahuripan is a subsidiary (98.8%) of PT Matahari Kahuripan Indonesia (Makin Group).⁶

6. Notary Act for PT Mekar Karya Kahuripan; www.makingroup.com/company_profile.html

Supply Chain Information

Supply Chain Links: Traders	AAA Oils and Fats	AAK	ADM	Apical	Bunge	Cargill	Fuji Oil	Olam	Pacific Inter-Link (via AAA)
PT Mekar Karya Kahuripan									
Makin Group	x	x	x	x	x	x	x	x	x

Supply Chain Links: Consumer Brands	Colgate-Palmolive	General Mills	Kellogg's	Mondelez	Nestle
PT Mekar Karya Kahuripan					
Makin Group	x	x	x	x	x

Supply Chain Links: Consumer Brands	PepsiCo	PZ Cussons	Unilever
PT Mekar Karya Kahuripan			
Makin Group	x	x	x

Group: Dharma Satya Nusantara Tbk (DSN Group)

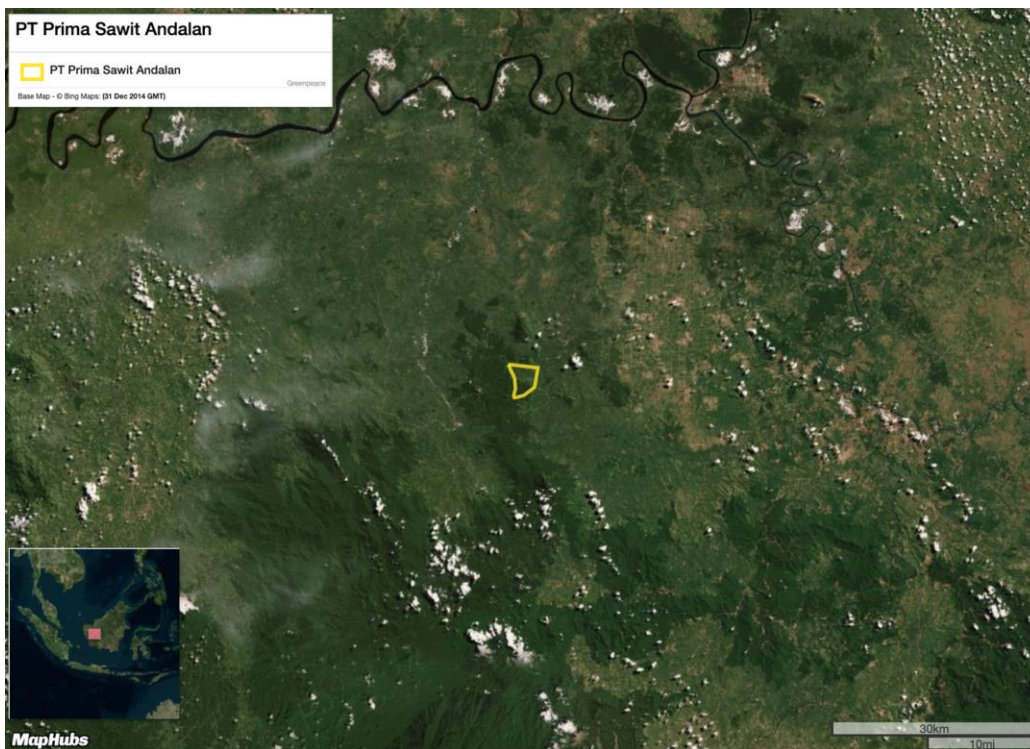
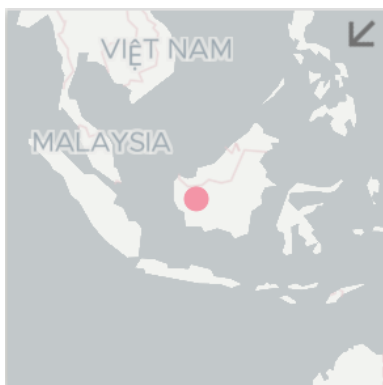
PT Prima Sawit Andalan

Location: 0.1328, 110.8

Deforestation and/or peat development

Report	Deforestation (ha)	Peat development (ha)	Peat forest development (ha)	Clearance prep/Stacking lines (ha)	Time period
Report 17	4	-	-	-	May 2 – July 6, 2019

Satellite imagery (see below) shows that between May 2, 2019 and July 6, 2019 a total of 4 hectares of forest were cleared in the PT Prima Sawit Andalan concession. (Imagery © 2019 Planet Labs Inc.)



Alert Imagery (before and after satellite images)

Date: May 2, 2019



Date: July 6, 2019



Ownership Information

PT Prima Sawit Andalan is part of Dharma Satya Nusantara Tbk (DSN Group).⁷

7. Dharma Sawit Nusantara Tbk Annual Report 2018 p24, www.dsn.co.id/uploads/AR%20DSNG%202018%20OK.pdf

Supply Chain Information

Supply Chain Links: Traders	AAK	ADM	Apical	Cargill	Fuji Oil	GAR	KLK
PT Prima Sawit Andalan							
Dharma Satya Nusantara Tbk (DSN Group)	x	x	x	x	x	x	x

Supply Chain Links: Traders	Louis Dreyfus	Olam	Wilmar
PT Prima Sawit Andalan			
Dharma Satya Nusantara Tbk (DSN Group)	x	x	x

Supply Chain Links: Consumer Brands	Avon	Colgate-Palmolive	Ferrero	General Mills	Hershey	Kellogg's	Mars	Mondelez
PT Prima Sawit Andalan								
Dharma Satya Nusantara Tbk (DSN Group)	x	x	x	x	x	x	x	x

Supply Chain Links: Consumer Brands	Nestle	PepsiCo	P&G	PZ Cussons	Reckitt Benckiser	Unilever
PT Prima Sawit Andalan						
Dharma Satya Nusantara Tbk (DSN Group)	x	x	x	x	x	x

Group: Kirana Megatara

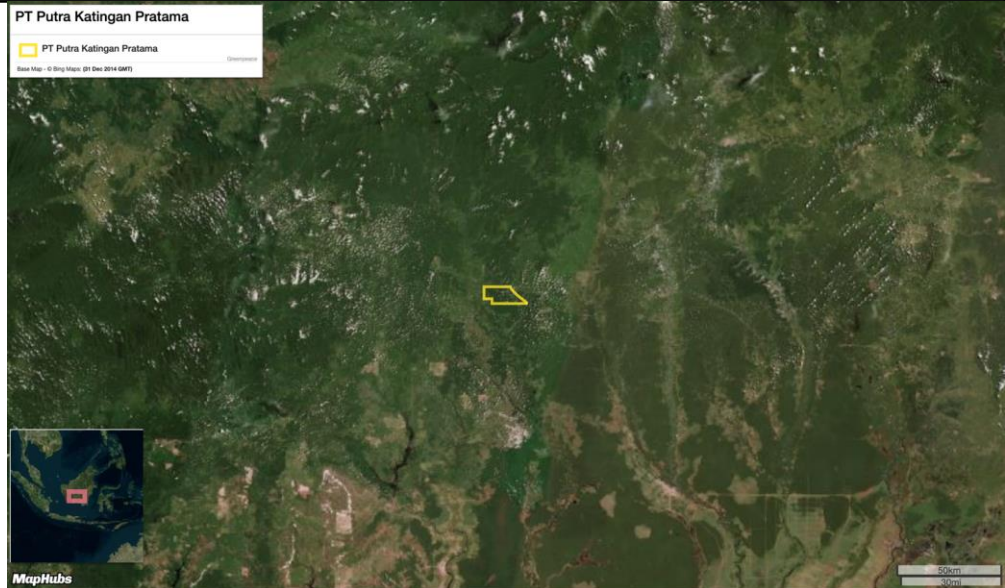
PT Putra Katingan Pratama

Location: -1.259, 113.2

Deforestation and/or peat development

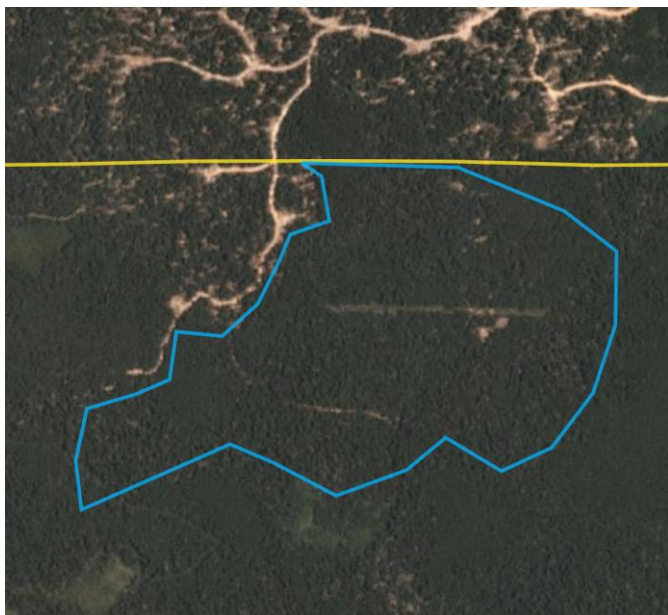
Report	Deforestation (ha)	Peat development (ha)	Peat forest development (ha)	Clearance prep/Stacking lines (ha)	Time period
Report 17	-	-	-	167	Sept. 22, 2018 – July 5, 2019

Satellite imagery (see below) shows that between September 22, 2018 and July 5, 2019 a total of 167 hectares were prepared for clearance in the PT Putra Katingan Pratama concession. (Imagery © 2019 Planet Labs Inc.)

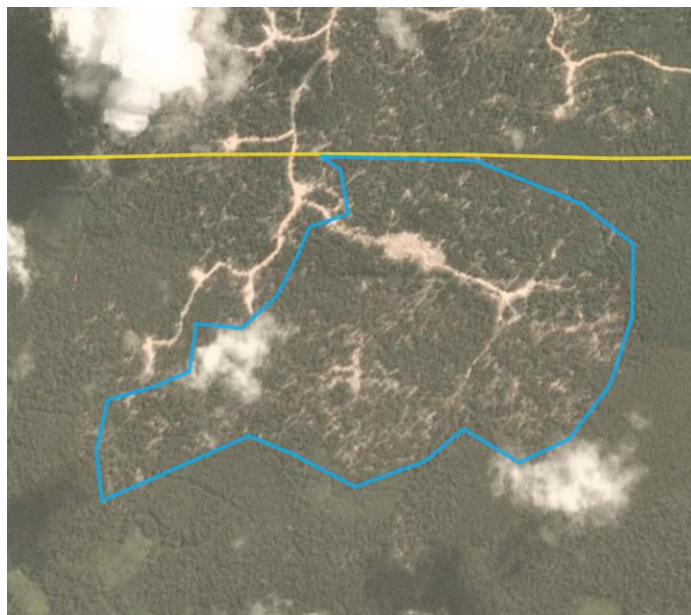


Alert Imagery (before and after satellite images)

Date: Sept. 22, 2018



Date: July 5, 2019



Ownership Information

PT Putra Katingan Pratama is part of the Kirana Megatara Group.⁸

In 2018, Kirana Megatara sold all its palm oil production to PT Etam Bersama Lestari and PT Dwi Lestari Jaya, Triputra Agro Persada (TAP Group) subsidiaries,⁹ hence why we are including supply chain links to TAP in the supply chain information below.

8 . PT Kirana Megatara Tbk Annual Report 2018 p31, www.kiranamegatara.com/uploads/product/Annual_Report_2018_-_PT_Kirana_Megatara_Tbk1.pdf

9. PT Kirana Megatara Tbk Annual Report 2018 p75, www.kiranamegatara.com/uploads/product/Annual_Report_2018_-_PT_Kirana_Megatara_Tbk1.pdf

Supply Chain Information

Supply Chain Links: Traders	AAK	ADM	Apical	Bunge	Cargill	Fuji Oil	KLK
PT Putra Katingan Pratama							
Kirana Megatara	x	x	x	x	x	x	x

Supply Chain Links: Traders	Louis Dreyfus	Musim Mas	Pacific Inter-Link (via PT Pacific Indopalm Industries)	PT Pacific Indopalm Industries	Sime Darby	Wilmar
PT Putra Katingan Pratama						
Kirana Megatara	x	x	x		x	x

Supply Chain Links: Consumer Brands	Avon	Colgate-Palmolive	General Mills	Hershey	Kellogg's	Mars	Mondelez	Nestle
PT Putra Katingan Pratama								
Kirana Megatara	x	x	x	x	x	x	x	x

Supply Chain Links: Consumer Brands	PepsiCo	P&G	PZ Cussons	Reckitt Benckiser	Unilever
PT Putra Katingan Pratama					
Kirana Megatara	x	x	x	x	x

Group: RGE

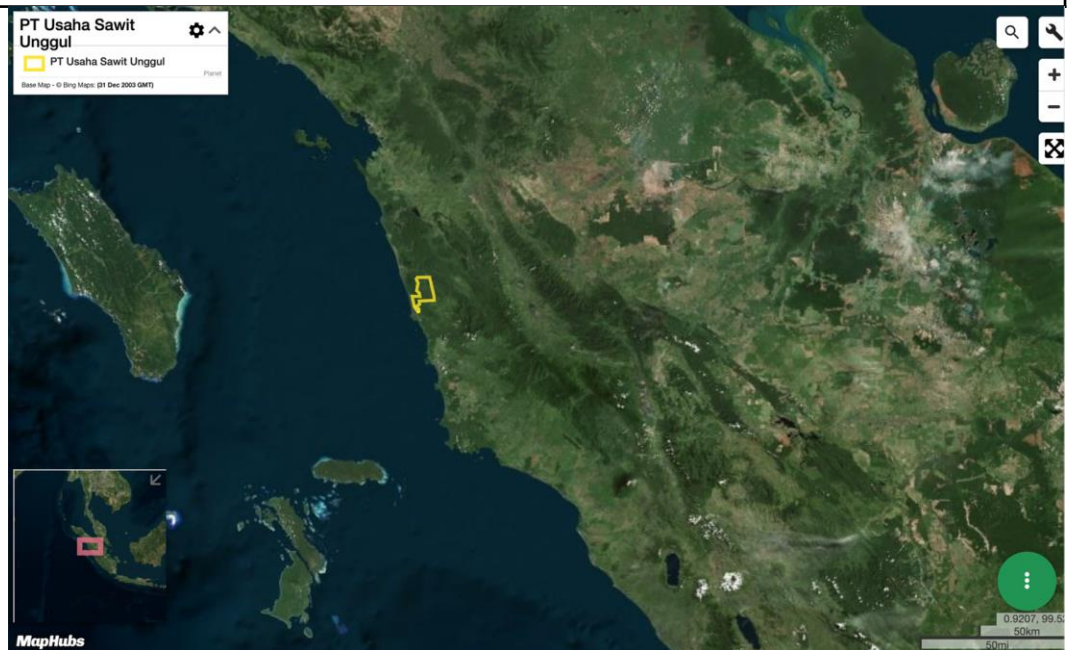
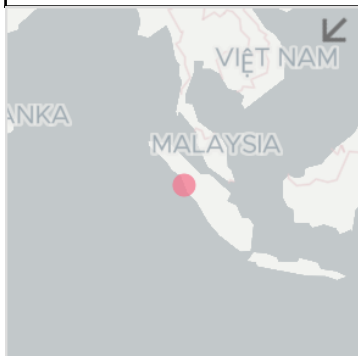
PT Usaha Sawit Unggul

Location: 0.9364, 98.99

Deforestation and/or peat development

Report	Deforestation (ha)	Peat development (ha)	Peat forest development (ha)	Clearance prep/Stacking lines (ha)	Time period
Report 17	-	-	23	28	April 29 – July 5, 2019

Satellite imagery (see below) shows that between April 29, 2019 and July 5, 2019 a total of 23 hectares of peat forest were cleared and 28 hectares were prepared for clearance in the PT Usaha Sawit Unggul concession. (Imagery © 2019 Planet Labs Inc.)

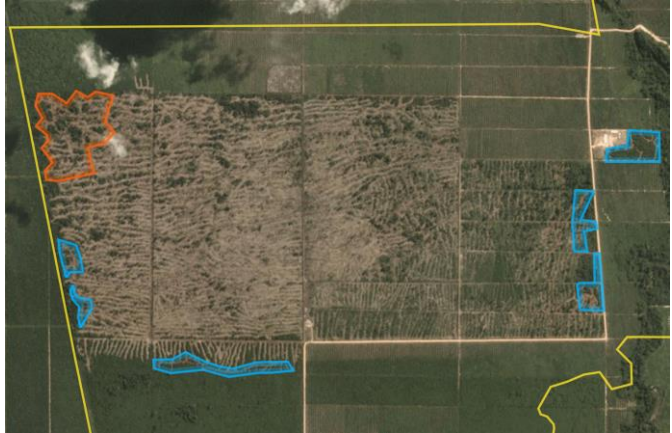


Alert Imagery (before and after satellite images)

Date: April 29, 2019



Date: July 5, 2019



Ownership Information

PT Usaha Sawit Unggul is a subsidiary of PT Asianagro Lestari,¹¹ which is part of the RGE Group.¹² RGE Group companies include Asian Agri and Apical.¹³

11. Notary Act for PT Usaha Sawit Unggul

12. Toba Pulp Tbk Annual Report 2018 states that PT Asianagro Lestari is 'under common control' as Toba Pulp Lestari Tbk, which is part of the RGE Group, p175, www.tobapulp.com/wp-content/uploads/2019/05/LAPORAN-TAHUNAN-INRU-2018.pdf.

13. www.rgei.com/?gclid=EA1aIQobChMI8sfalLWU4wIVV-DtCh0_BARXEAAYASAAEgIzSvD_BwE

Supply Chain Information

Supply Chain Links: Traders	AAA Oils and Fats	AAK	ADM	Apical	Cargill	Fuji Oil
PT Usaha Sawit Unggul						
RGE Group	x	x	x	x	x	x

Supply Chain Links: Traders	KLK	Louis Dreyfus	Musim Mas	Olam	Pacific Inter-Link (via AAA)
PT Usaha Sawit Unggul					
RGE Group	x	x	x	x	x

Supply Chain Links: Consumer Brands	Avon	General Mills	Hershey	Kellogg's	Mars	Nestle
PT Usaha Sawit Unggul						
RGE Group	x	x	x	x	x	x

Supply Chain Links: Consumer Brands	PepsiCo	P&G	PZ Cussons	Reckitt Benckiser	Unilever
PT Usaha Sawit Unggul					
RGE Group	x	x	x	x	x

Group: Shin Yang Holding Sdn Bhd / Sarawak Oil Palms Bhd

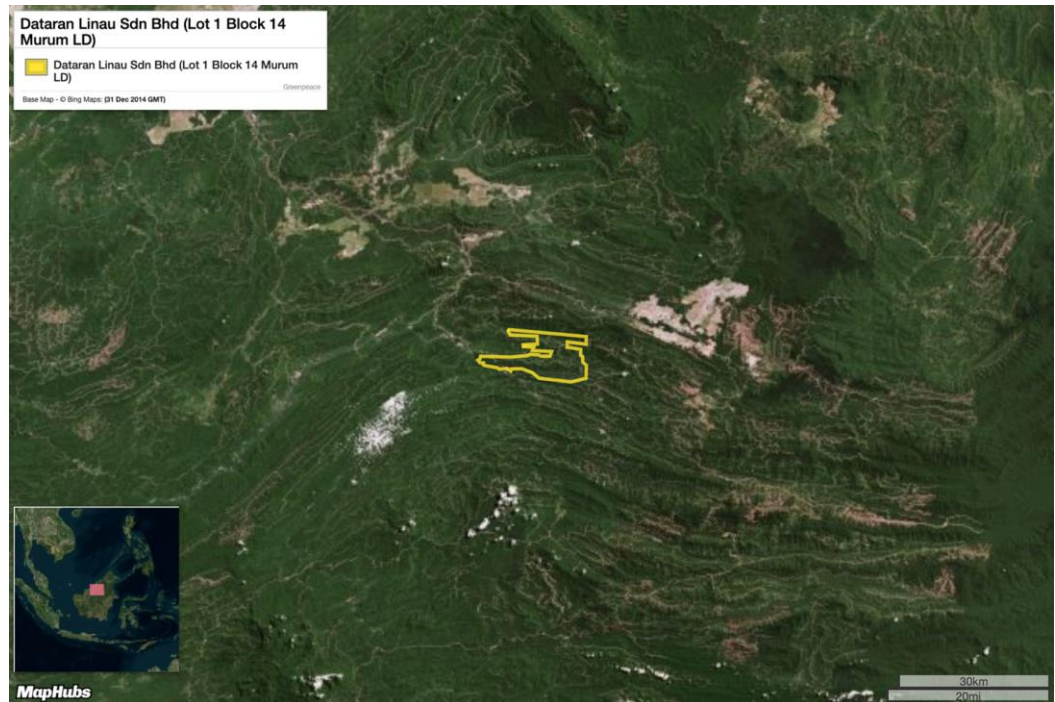
Dataran Linau Sdn Bhd (Lot 1 Block 14 Murum LD)

Location: 2.667, 114.3

Deforestation and/or peat development

Report	Deforestation (ha)	Peat development (ha)	Peat forest development (ha)	Clearance prep/Stacking lines (ha)	Time period
Report 17	-	-	-	548	Feb. 27 – May 27, 2019

Satellite imagery (see below) shows that between February 27, 2019 and May 27, 2019 a total of 548 hectares were prepared for clearance in the Dataran Linau Sdn Bhd concession. (Imagery © 2019 Planet Labs Inc.)



Alert Imagery (before and after satellite images)

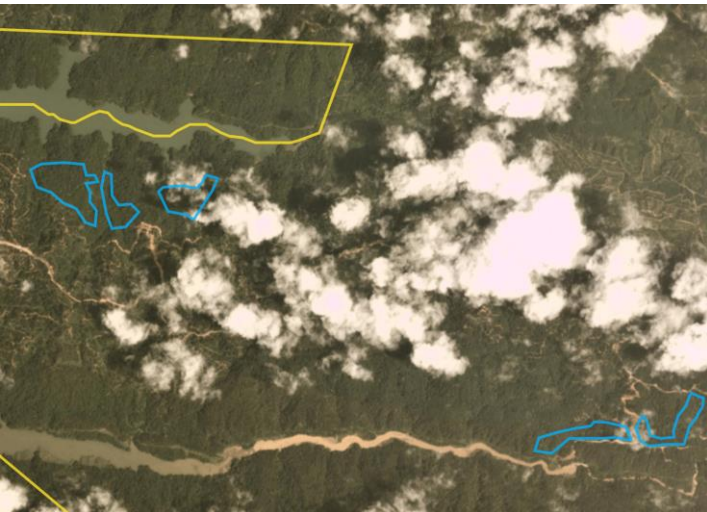
Date: February 27, 2019



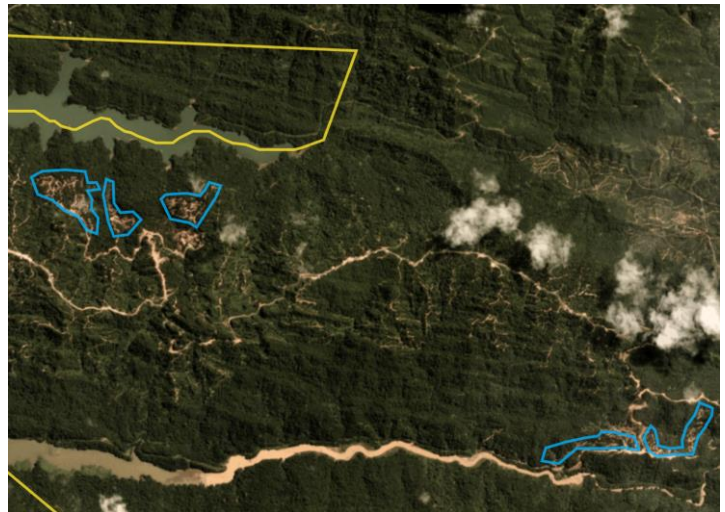
Date: May 27, 2019



Date: February 27, 2019



Date: May 27, 2019



Ownership Information

Dataran Linau Sdn Bhd is part of Shin Yang Holding Sdn Bhd (Shin Yang Group), which is a major shareholder (28.51%) in Sarawak Oil Palms Bhd (also part of the Shin Yang Group).¹⁵

Tan Sri Datuk Ling Chiong Ho is founder of the Shin Yang Group, and serves as the Chairman of Shin Yang Holding Sdn Bhd and Sarawak Oil Palms Bhd. Tan Sri Datuk Ling Chiong Ho and his brothers - Ling Chiong Sing, Ling Chiong Pin and Ling Chiong Sieng - are substantial shareholders of Shin Yang Holding Sdn Bhd. Tan Sri Datuk Lin Chiong Ho, Ling Chiong Sing and Lin Lu Kwang (the eldest son of Tan Sri Datuk Lin Chiong Ho) are substantial shareholders of Sarawak Oil Palms Bhd.¹⁶

15. Shin Yang Shipping Corporation Bhd circular to shareholders, 31 October 2016 P9 http://disclosure.bursamalaysia.com/FileAccess/apbursaweb/download?id=177560&name=EA_DS_ATTACHMENTS; Sarawak Oil Palm Bhd Annual Report 2018 p84

16. Sarawak Oil Palms Bhd Annual Report 2018, www.sop.com.my/wp-content/uploads/2019/05/SOP-AR-2018.pdf

Supply Chain Information

Supply Chain Links: Traders	AAK	ADM	Cargill	Fuji Oil	KLK	Louis Dreyfus	Olam	Sime Darby
Dataran Linau Sdn Bhd								
Shin Yang Holding Bhd / Sarawak Oil Palms	x	x	x	x	x	x	x	x

Supply Chain Links: Consumer Brands	Avon	Colgate-Palmolive	General Mills	Hershey	Kellogg's	Mars	Nestle
Dataran Linau Sdn Bhd							
Shin Yang Holding Bhd / Sarawak Oil Palms	x	x	x	x	x	x	x

Supply Chain Links: Consumer Brands	P&G	Reckitt Benckiser	Unilever
Dataran Linau Sdn Bhd			
Shin Yang Holding Bhd / Sarawak Oil Palms	x	x	x

Group: Yuwang

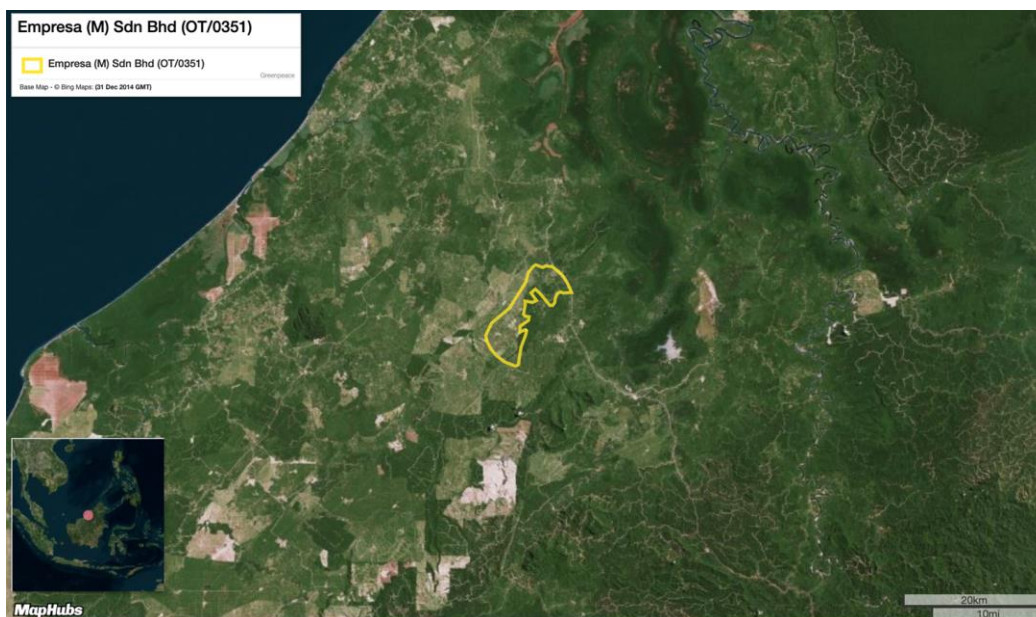
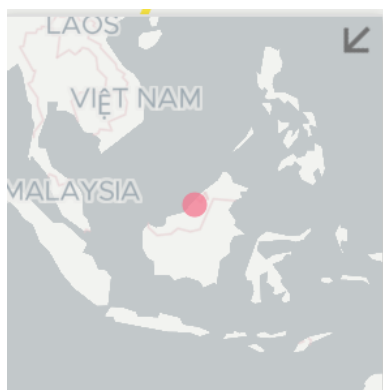
Empresa (M) Sdn Bhd (OT/0351)

Location: 3.831, 114.0

Deforestation and/or peat development

Report	Deforestation (ha)	Peat development (ha)	Peat forest development (ha)	Clearance prep/Stacking lines (ha)	Time period
Report 17	4	-	-	-	March 10 – July 9, 2019

Satellite imagery (see below) shows that between March 10, 2019 and July 9, 2019 a total of 4 hectares of forest were cleared in the Empresa (M) Sdn Bhd concession. (Imagery © 2019 Planet Labs Inc.)



Alert Imagery (before and after satellite images)

Date: March 10, 2019



Date: July 9, 2019



Ownership Information

Empresa (M) Sdn Bhd (OT/0351) is part of the Yuwang Group.¹⁷

17. www.bloomberg.com/research/stocks/private/snapshot.asp?privcapId=32317135; <http://www.yuwang.com.my/webpages/plantation.asp>; Company profile from Companies Commission Malaysia.

Supply Chain Information

Supply Chain Links: Traders	ADM	BLD	Cargill	Fuji Oil	IOI	KLK
Empresa (M) Sdn Bhd (OT/0351)	x		x	x	x	
Yuwang Group	x	x	x	x	x	x

Supply Chain Links: Traders	Louis Dreyfus	Mewah	Olam	Sime Darby	Wilmar
Empresa (M) Sdn Bhd (OT/0351)		x	x	x	x
Yuwang Group	x	x	x	x	x

Supply Chain Links: Consumer Brands	Avon	Colgate-Palmolive	General Mills	Hershey	Kellogg's	Mars	Mondelez	Nestle
Empresa (M) Sdn Bhd (OT/0351)	x	x	x	X	X	X	X	x
Yuwang Group	x	x	x	X	X	X	x	x

Supply Chain Links: Consumer Brands	PepsiCo	P&G	PZ Cussons	Reckitt Benckiser	Unilever
Empresa (M) Sdn Bhd (OT/0351)		x	x		x
Yuwang Group	x	x	x	x	x

Group: Rimbunan Hijau

Poh Zhen Sdn Bhd

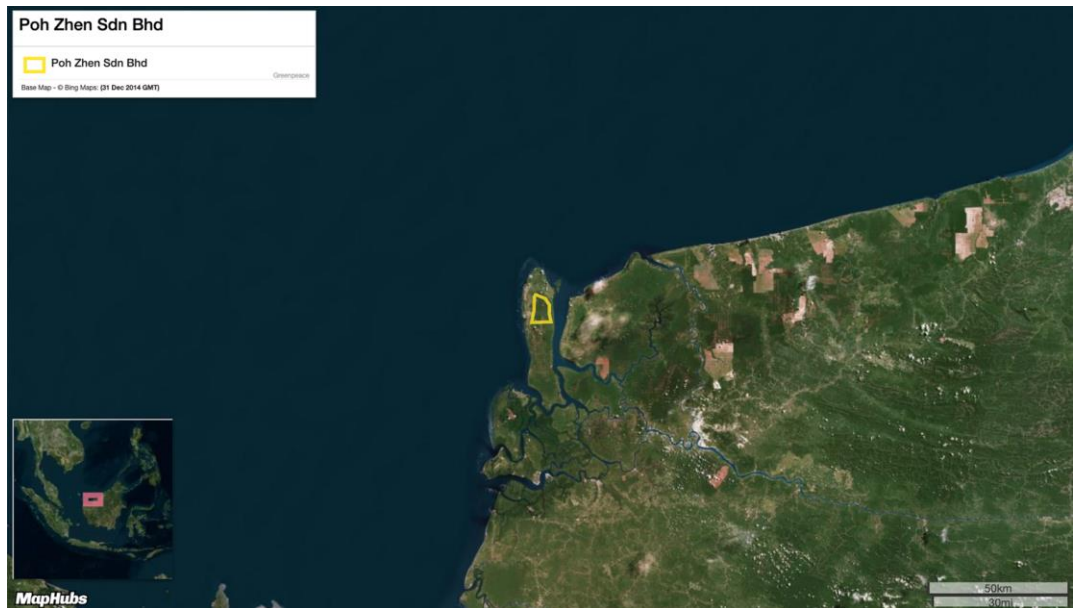
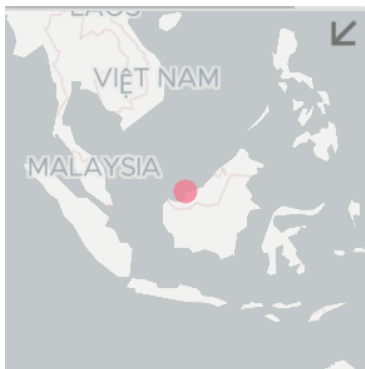
Location: 2.672, 111.3

Deforestation and/or peat development

Report	Deforestation (ha)	Peat development (ha)	Peat forest development (ha)	Clearance prep/Stacking lines (ha)	Time period
Report 17	-	40	-	58	March 12 – July 7, 2019

Satellite imagery (see below) shows that between March 12, 2019 and July 7, 2019 a total of 40 hectares of peat were developed and 58 hectares were prepared for clearance in the Poh Zhen Sdn Bhd concession.

(Imagery © 2019 Planet Labs Inc.)



Alert Imagery (before and after satellite images)

Date: March 12, 2019



Date: July 7, 2019



Ownership Information

Poh Zhen Sdn Bhd is a wholly owned subsidiary of Jaya Tiasa Bhd, part of the Rimbunan Hijau Group.¹⁸

¹⁸. Company profile from Companies Commission Malaysia.

Supply Chain Information

Supply Chain Links: Traders	AAK	ADM	BLD	Bunge	Cargill	Fuji Oil	KLK	Olam	Sime Darby	Wilmar
Poh Zhen Sdn Bhd										
Rimbunan Hijau Group	x	x	x	x	x	x	x	x	x	x

Supply Chain Links: Consumer Brands	Avon	Colgate-Palmolive	General Mills	Hershey	Kellogg's	Mars	Nestle
Poh Zhen Sdn Bhd							
Rimbunan Hijau Group	x	x	x	x	x	x	x

Supply Chain Links: Consumer Brands	PepsiCo	P&G	PZ Cussons	Reckitt Benckiser	Unilever
Poh Zhen Sdn Bhd					
Rimbunan Hijau Group	x	x	x	x	x

Group: WTK

Southwind Plantation Sdn Bhd

Location: 3.637, 113.5

Deforestation and/or peat development

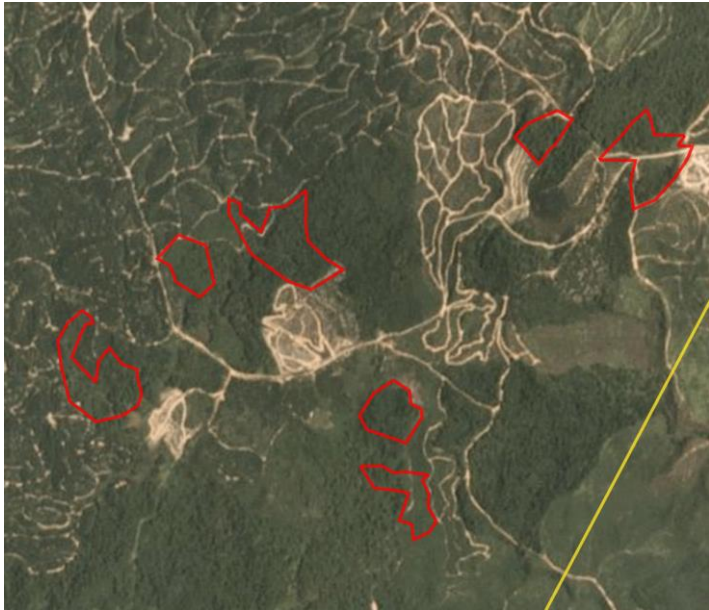
Report	Deforestation (ha)	Peat development (ha)	Peat forest development (ha)	Clearance prep/Stacking lines (ha)	Time period
Report 17	23	-	-	-	March 25 – July 5, 2019

Satellite imagery (see below) shows that between March 25, 2019 and July 5, 2019 a total of 23 hectares of forest were cleared in the Southwind Plantation Sdn Bhd concession. (Imagery © 2019 Planet Labs Inc.)



Alert Imagery (before and after satellite images)

Date: March 25, 2019



Date: July 5, 2019



Ownership Information

Southwind Plantation Sdn Bhd is part of the WTK Group, through WTK Realty.¹⁹

¹⁹. Company profile from Companies Commission Malaysia.

Supply Chain Information

Supply Chain Links: Traders	AAK	ADM	BLD	Bunge	Cargill	Fuji Oil	IOI
Southwind Plantation Sdn Bhd		x				x	
WTK Group	x	x	x	x	x	x	x

Supply Chain Links: Traders	KLK	Mewah	Olam	Sime Darby	Wilmar
Southwind Plantation Sdn Bhd	x	x	x	x	x
WTK Group	x	x	x	x	x

Supply Chain Links: Consumer Brands	Avon	Colgate-Palmolive	General Mills	Hershey	Kellogg's	Mars	Mondelez	Nestle
Southwind Plantation Sdn Bhd	x		x			x	x	x
WTK Group	x	x	x	x	x	x	x	x

Supply Chain Links: Consumer Brands	PepsiCo	P&G	PZ Cussons	Reckitt Benckiser	Unilever
Southwind Plantation Sdn Bhd		x	x	x	x
WTK Group	x	x	x	x	x

Group: Samling

Syarikat Samling Timber Sdn Bhd (LPF 0014)

Location: 3.149, 113.1

Deforestation and/or peat development

Report	Deforestation (ha)	Peat development (ha)	Peat forest development (ha)	Clearance prep/Stacking lines (ha)	Time period
Report 17	-	6	-	-	Jan. 5 – July 6, 2019

Satellite imagery (see below) shows that between January 5, 2019 and July 6, 2019 a total of 6 hectares of peat were developed in the Syarikat Samling Timber Sdn Bhd concession. (Imagery © 2019 Planet Labs Inc.)



Alert Imagery (before and after satellite images)

Date: January 5, 2019



Date: July 6, 2019



Ownership Information

Syarikat Samling Timber Sdn Bhd (LPF 0014) is part of the Samling Group.²⁰

²⁰ www.samling.com/itp.php; http://www.samling.com/sic_pubsummary.php

Supply Chain Information

Supply Chain Links: Traders	AAK	ADM	BLD	Cargill	Fuji Oil	IOI	KLK	Olam	Sime Darby	Wilmar
Syarikat Samling Timber Sdn Bhd (LPF 0014)										
Samling Group	x	x	x	x	x	x	x	x	x	x

Supply Chain Links: Consumer Brands	Avon	Colgate-Palmolive	General Mills	Hershey	Kellogg's	Mars	Mondelez	Nestle
Syarikat Samling Timber Sdn Bhd (LPF 0014)								
Samling Group	x	x	x	x	x	x	x	x

Supply Chain Links: Consumer Brands	PepsiCo	P&G	PZ Cussons	Reckitt Benckiser	Unilever
Syarikat Samling Timber Sdn Bhd (LPF 0014)					
Samling Group	x	x	x	x	x

Group: Woodman

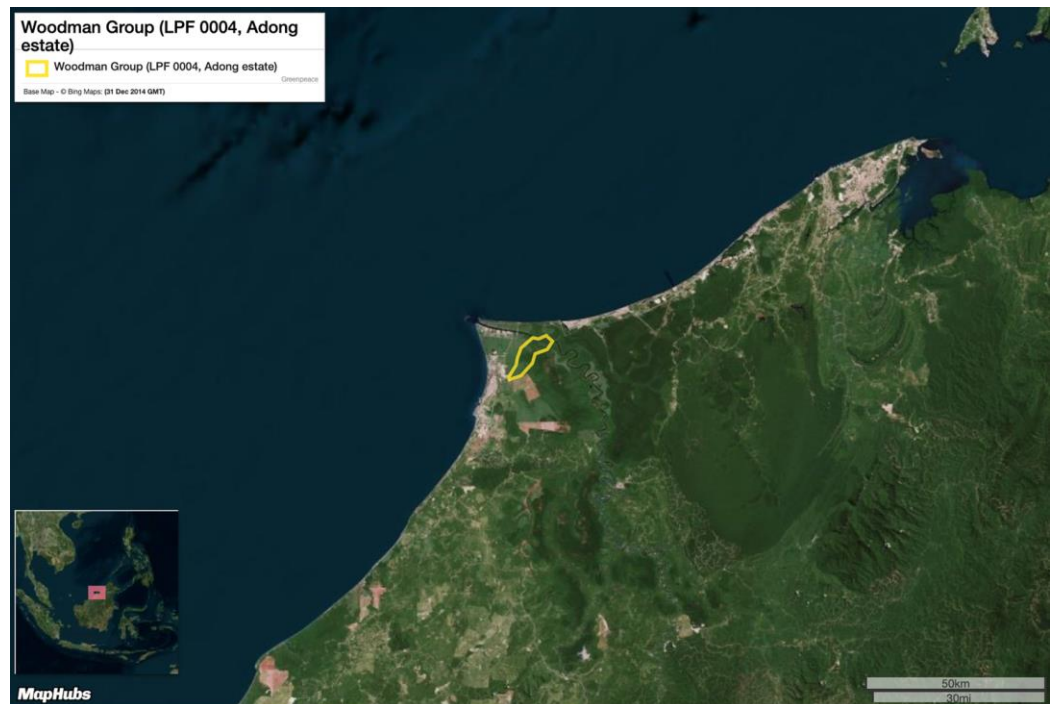
Adong estate, part of LPF 0004

Location: 4.470, 114.1

Deforestation and/or peat development

Report	Deforestation (ha)	Peat development (ha)	Peat forest development (ha)	Clearance prep/Stacking lines (ha)	Time period
Report 17	-	79	-	-	March 17 – July 7, 2019

Satellite imagery (see below) shows that between March 17, 2019 and July 7, 2019 a total of 79 hectares of peat were developed in the Woodman Adong estate (part of LPF 0004) concession. (Imagery © 2019 Planet Labs Inc.)



Alert Imagery (before and after satellite images)

Date: March 17, 2019



Date: July 7, 2019



Ownership Information

The Adong estate of LPF 0004 is held by the Woodman Group.²²

22. www.sgs.com/en/certified-clients-and-products/fcm/malaysia/-/media/3D89ECFC5278435DA65647823890FD89.ashx

Supply Chain Information

Supply Chain Links: Traders	ADM	Bunge	BLD	Cargill	Fuji Oil	KLK	Mewah	Olam	Sime Darby	Wilmar
Adong estate, part of LPF 0004	x	x		x	x	x		x	x	x
Woodman Group	x	x	X	x	x	x	x	x	x	x

Supply Chain Links: Consumer Brands	Avon	Colgate-Palmolive	General Mills	Hershey	Kellogg's	Mars	Mondelez	Nestle
Adong estate, part of LPF 0004	x	x	x	x	x	x	x	x
Woodman Group	x	x	x	x	x	x	x	x

Supply Chain Links: Consumer Brands	PepsiCo	P&G	PZ Cussons	Reckitt Benckiser	Unilever
Adong estate, part of LPF 0004	x	x	x	x	x
Woodman Group	x	x	x	x	x

Group: Woodman

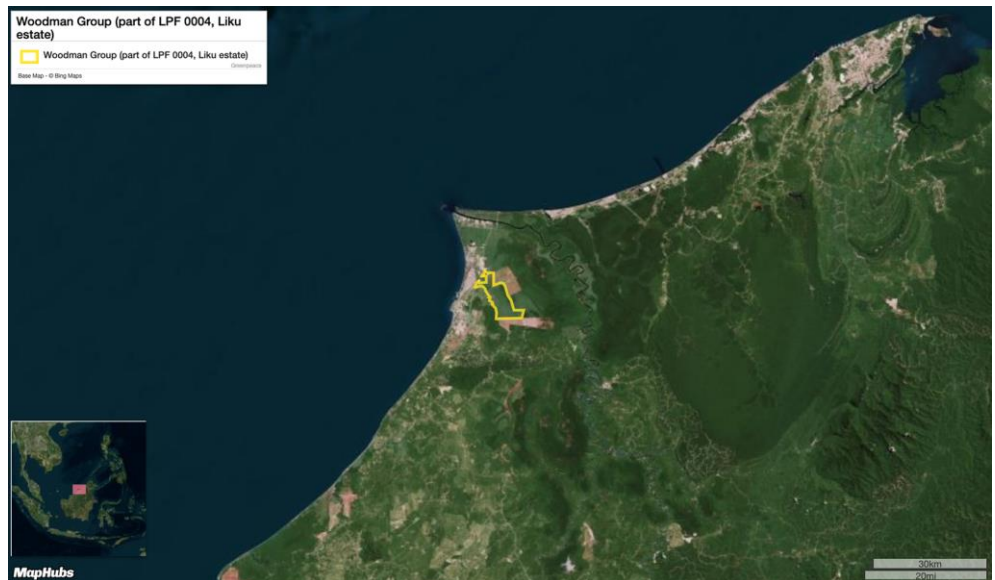
Liku estate, part of LPF 0004

Location: 3.209, 113.8

Deforestation and/or peat development

Report	Deforestation (ha)	Peat development (ha)	Peat forest development (ha)	Clearance prep/Stacking lines (ha)	Time period
Report 17	-	5	-	-	Feb. 19 – July 9, 2019

Satellite imagery (see below) shows that between February 19, 2019 and July 9, 2019 a total of 5 hectares of peat were developed in the Woodman Liku estate (part of LPF 0004) concession. (Imagery © 2019 Planet Labs Inc.)



Alert Imagery (before and after satellite images)

Date: February 19, 2019



Date: July 9, 2019



Ownership Information

The Liku estate of LPF 0004 is held by the Woodman Group.²³

23. www.sgs.com/en/certified-clients-and-products/fcm/malaysia/-/media/3D89ECFC5278435DA65647823890FD89.ashx

Supply Chain Information

Supply Chain Links: Traders	ADM	BLD	Bunge	Cargill	Fuji Oil	KLK	Mewah	Olam	Sime Darby	Wilmar
Liku estate, part of LPF 0004										
Woodman Group	x	x	x	x	x	x	x	x	x	x

Supply Chain Links: Consumer Brands	Avon	Colgate-Palmolive	General Mills	Hershey	Kellogg's	Mars	Mondelez	Nestle
Liku estate, part of LPF 0004								
Woodman Group	x	x	x	x	x	x	x	x

Supply Chain Links: Consumer Brands	PepsiCo	P&G	PZ Cussons	Reckitt Benckiser	Unilever
Liku estate, part of LPF 0004					
Woodman Group	x	x	x	x	x

Additional cases identified using screened GLAD alerts

The following cases have been identified through screened GLAD alerts (see methodology below). As these cases are either repeat cases from previous Rapid Response reports or where Mighty Earth did not determine any supply chain links for these concessions/Groups, no Planet image analysis was conducted for these cases to save resources.

Mighty Earth expects that palm oil traders conduct their own due diligence to determine if they are exposed to such companies/Groups. Further, traders without supply chain links to these cases should put them on their 'no buy' lists.

Methodology:

For Indonesia, GLAD alerts are screened using the Indonesia Ministry of Forestry and the Environment land cover dataset for 2017 which classifies existing palm oil plantations and primary and secondary forest. Hence, only GLAD alerts in primary and secondary forest according to that dataset are included.

For Malaysia, GLAD alerts are screened to exclude known plantation areas using the Global Forest Watch (GFW) plantations dataset. This automatically eliminates the most common false positives, i.e. the replanting of palm that existed prior to the year 2000.

New Cases				
Concession / license area	Group/ownership	Area covered by screened GLAD alerts (ha)	Time period	Supply chain connection identified
PT Agro Lintas Nusantara	Unknown	~63	May 19 - June 20, 2019	None
PT Triomas Forestry Development Indonesia	Unknown	~36	May 19 - June 20, 2019	None
PT Ruta Jona Lestari	Unknown	~16	May 19 - June 20, 2019	None
PT Citra Agro Abadi	Cilandry Anky Abadi Group	~14	May 19 - June 20, 2019	None
PT Wahana Hamparan Hijau	First Borneo Group	~8	May 19 - June 20, 2019	None
PT Khatulistiwa Agro Abadi	First Borneo Group	~5	May 19 - June 20, 2019	None

New Cases (continued)				
Concession license area	Group/ownership	Area covered by screened GLAD alerts (ha)	Time period	Supply chain connection identified
Koperasi Usaha Mandiri	Unknown	~9	May 19 - June 20, 2019	None
PT Katingan Hijau Lestari	Unknown	~18	May 19 - June 20, 2019	None
PT Tani Subur Makmur	Unknown	~6	May 19 - June 20, 2019	None
PT Duet Rija	Unknown	~5	May 19 - June 20, 2019	None
PT Trimegah Karya Utama	Tadmax Sdn Bhd	~5	May 19 - June 20, 2019	None
PT Ginang Fohu Plantation	Bukit Berlian Plantation Group	~5	May 19 - June 20, 2019	None
PT Uniseraya	Unknown	~5	May 19 - June 20, 2019	None
PT Future Agropia Indonesia	JSK International Co Ltd (Korea)	~5	May 19 - June 20, 2019	None
PT Cipta Karya Sesayap	Unknown	~5	May 19 - June 20, 2019	None
Hua Seng Plantation Sdn Bhd	Double Dynasty	~82	May 19 - June 20, 2019	None
Pelita Holdings Sdn Bhd	Pelita Holdings Sdn Bhd	~7	May 19 - June 20, 2019	None
Pelita Ilham Sdn Bhd	Pelita Holdings Sdn Bhd	~6	May 19 - June 20, 2019	None
Kwantas Corporation	Kwantas Corporation	~6	May 19 - June 20, 2019	None
PT Graha Kencana Mulia	Hayel Saeed Anam (HSA) Group	~31	May 19 - June 20, 2019	None

Repeat Cases

Concession license area	Group/ownership	Area covered by screened GLAD alerts (ha)	Time period	Rapid Response report related to each case
PT Laot Bangko	Unknown	~21	May 19 - June 20, 2019	Rapid Response report 16
PT Menthobi Mitra Lestari	PT Bakrie Sumatra Plantations Tbk	~33	May 19 - June 20, 2019	Rapid Response report 16
PT Wanasawit Subur Lestari	Best Group	~19	May 19 - June 20, 2019	Rapid Response report 16
PT Internusa Jaya Sejahtera	Indonusa Group	~621	May 19 - June 20, 2019	Rapid Response reports 7 , 10 , 11 , 12 , 15
PT Persada Era Agro Kencana	Unknown	~99	May 19 - June 20, 2019	Rapid Response reports 9 , 10 , 11 , 12 , 15
PT Permata Sawit Mandiri	Genting	~92	May 19 - June 20, 2019	Rapid Response report 15
PT Sumber Sawit Mitrajaya	Unknown	~14	May 19 - June 20, 2019	Rapid Response report 15
PT Kayan Plantation	Unknown	~77	May 19 - June 20, 2019	Rapid Response report 15
PT Citra Sawit Cemerlang	Genting Group	~45	May 19 - June 20, 2019	Rapid Response reports 14 and 15
PT Rimbun Sawit Papua	Salim/IndoGunta	~67	May 19 - June 20, 2019	Rapid Response reports 3 , 10 , 13 , 14
PT Sawit Mandiri Lestari	PT Sawit Sumbermas Sarana Tbk	~40	May 19 - June 20, 2019	Rapid Response reports 3 , 7 , 8 , 9 , 10 , 14
PT Ichiko Agro Lestari	Unknown	~28	May 19 - June 20, 2019	Rapid Response report 14
Kwantas Pelita	Kwantas Corporation	~6	May 19 - June 20, 2019	Rapid Response report 14

Repeat Cases (continued)

Concession license area	Group/ownership	Area covered by screened GLAD alerts (ha)	Time period	Rapid Response reports related to each case
Samling Reforestation (Bintulu) Sdn Bhd: LPF/0008 Marudi estate	Samling Group	~12	May 19 - June 20, 2019	Rapid Response report 13
PT Kartika Cipta Pratama	Hayel Saeed Anam Group	~81	May 19 - June 20, 2019	Rapid Response reports 5 , 7 , 9 , 10 , 11 , 12 , 13
PT Krida Darma Kahuripan	Unknown (former Makin Group)	~73	May 19 - June 20, 2019	Rapid Response reports 5 , 6 , 11 , 12
PT Marita Makmur Jaya	Unknown	~28	May 19 - June 20, 2019	Rapid Response report 12
PT Kapuasindo Palm Industri	Evershine Asset Corporation and Everbright Resources Corporation	~5	May 19 - June 20, 2019	Rapid Response reports 5 , 6 , 12
PT Kusuma Alam Sari	Alas Kusuma	~12	May 19 - June 20, 2019	Rapid Response report 7
PT Prasetya Mitra Muda (Block II)	Unknown	~7	May 19 - June 20, 2019	Rapid Response report 6
PT Pipit Citra Persada	Unknown	~5	May 19 - June 20, 2019	Rapid Response report 6
PT Rimba Karya Rayatama	Unknown	~12	May 19 - June 20, 2019	Rapid Response report 2
PT Berkat Cipta Abadi	Korindo	~6	May 19 - June 20, 2019	Burning Paradise report