

Rapid Response

Palm Oil, Report 15



May 2019

Prepared with support from MapHubs

Table of Contents

Cases identified using Planet imagery

Indonesian Companies

Indonusa Group: PT Internusa Jaya Sejahtera	3
Genting Plantations Bhd: PT Citra Sawit Cemerlang	6
Genting Plantations Bhd: PT Permata Sawit Mandiri	9
Mulia Sawit Group: PT Persada Era Agro Kencana	12
Widya Corporation: PT Mulia Inti Perkasa	15
Anglo-Eastern Plantations: PT Kahayan Agro Plantation	18
CB Industrial Product Holding: PT Jaya Jadi Utama	21

Malaysian Companies

Samling Group: Samling Jelalong LPF 0007 (Parts 1 & 3)	23
Samling Group: Samling Lana LPF 0006	29
Double Dynasty Sdn Bhd: Mutiara Pelita Genaan Plantation Sdn Bhd	32
TH Plantations Bhd: Ladang Tabung Haji	35
Shin Yang Group: Shin Yang LPF 0018	38
Ta Ann Group: Ladang Selezu Sdn Bhd	41

Additional Cases Identified Using Filtered GLAD Alerts

Hayel Saeed Anam Group: PT Kartika Cipta Pratama	44
KPP Group: PT Kayan Plantation	44
Unknown Group: PT Palmakharisma Sekawan	44
Unknown Group: PT Sawit Berkat Sejahtera	44
Korompis Family and Peak Capital: PF Berau Karetindo Lestari	44
Mitra Jaya Group: PT Sumber Sawit Mitrajaya	44
Metro Lestari Jaya Group: PT Sawit Mandiri Lestari	44
Unknown Group: PT Borneo Agro Sawit	44
Mariya Family: PT Malindo Jaya Diraja	44
Puncak Niaga Holdings: Danum Sinar (Sarawak)	45
Unknown Group: PT Marita Makmur Jaya	45
Unknown Group: PT Borneo Estate Sejahtera	45
Unknown Group: PT Repindo Sawit Sejati	45

Sources for supply chain information: <https://bit.ly/2EI4goY>

Supply chain information included in Rapid Response reports is based on latest publicly versions of mill disclosures and grievance logs. Mighty Earth encourages companies to send updated versions of mill disclosures as soon as they become available and any decision to suspend supplies with a given group/company listed in those mill disclosures; please send to rapidresponse@mightyearth.org.

Group: Indonusa

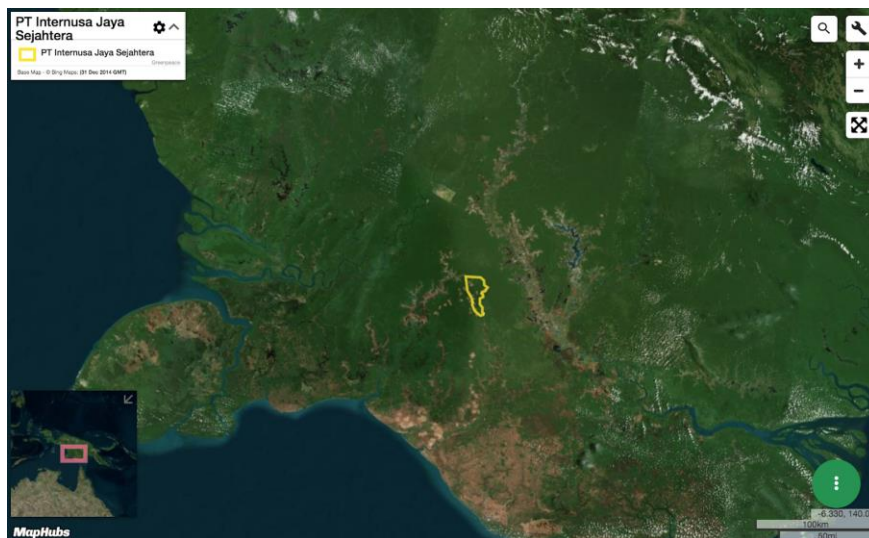
PT Internusa Jaya Sejahtera

Location: -7.258, 140.7

Deforestation and/or peat development

Report	Deforestation (ha)	Peat development (ha)	Peat forest development (ha)	Clearance prep/Stacking lines (ha)	Time period
Report 7	502	-	-	168	March 9-July 28, 2018
Report 10	517	-	-	-	July 29-Oct. 9, 2018
Report 11	635	-	-	-	Oct. 9 – Dec. 4 (Area A) and Oct. 6 – Dec. 11, 2018 (Area B)
Report 12	217	-	-	-	Dec. 4, 2018 – Jan. 6, 2019 (Area A) and Dec. 11, 2018 – Jan. 6, 2019 (Area B)
Report 15	767	-	-	-	Jan 6 – April 19, 2019

Satellite imagery (see below) shows that between January 6, 2019 and April 19, 2019 a total of 767 hectares of forest were cleared in the PT Internusa Jaya Sejahtera concession. (Imagery © 2019 Planet Labs Inc.)

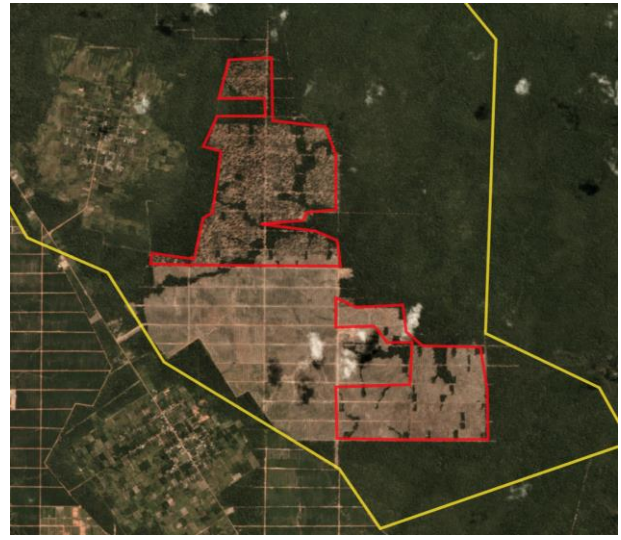


Alert Imagery (before and after satellite images)

Date: January 6, 2019



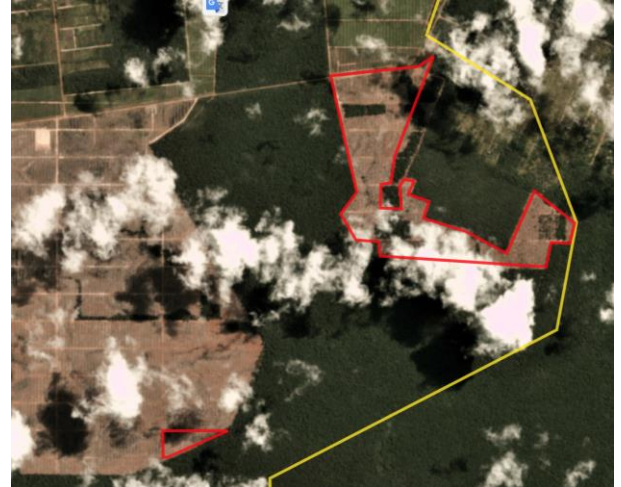
Date: April 19, 2019



Date: January 6, 2019



Date: April 19, 2019



Ownership Information

PT Internusa Jaya Sejahtera is part of Indonusa Agromulia Group, commonly known as Indonusa group. PT Internusa Jaya Sejahtera is owned by Rosna Tjuatja (99.87%), who sits as the Commissioner on the Indonusa Agromulia Group and also serves as President commissioner at PT Profindo International Securities.¹

1. https://profindo.com/?page_id=57&lang=id

Supply Chain Information

Supply Chain Links: Traders	AAA Oils & Fats	Pacific Inter-Link (via AAA)
PT Internusa Jaya Sejahtera		
Indonusa	x	x

Supply Chain Links: Consumer Brands	Avon	Kellogg's	Reckitt Benckiser
PT Internusa Jaya Sejahtera			
Indonusa	x	x	x

Group: Genting Plantations Bhd

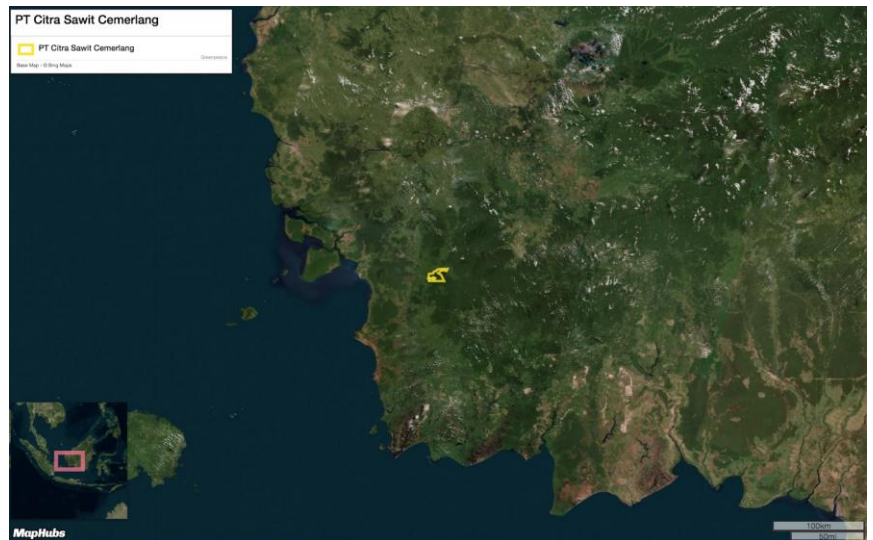
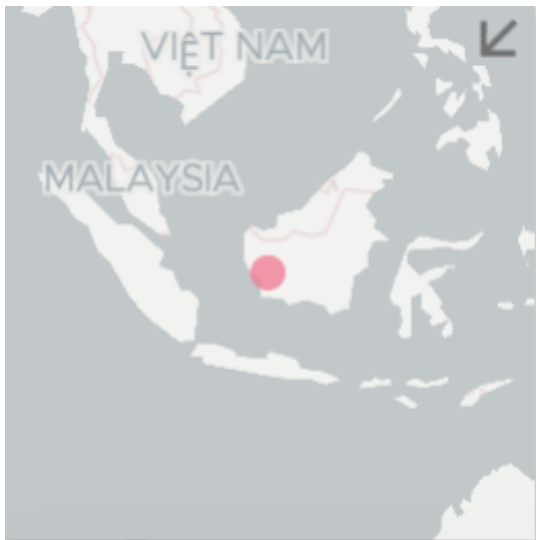
PT Citra Sawit Cemerlang

Location: -1.205, 110.7

Deforestation and/or peat development

Report	Deforestation (ha)	Peat development (ha)	Peat forest development (ha)	Clearance prep/Stacking lines (ha)	Time period
Report 14	125	-	-	-	January 9, 2019 – February 19, 2019
Report 15	175	-	-	-	March 17 – May 15, 2019

Satellite imagery (see below) shows that between March 17, 2019 and May 15, 2019, a total of 175 hectares of forest were cleared in PT Citra Sawit Cemerlang concession. (Imagery © 2019 Planet Labs Inc.)



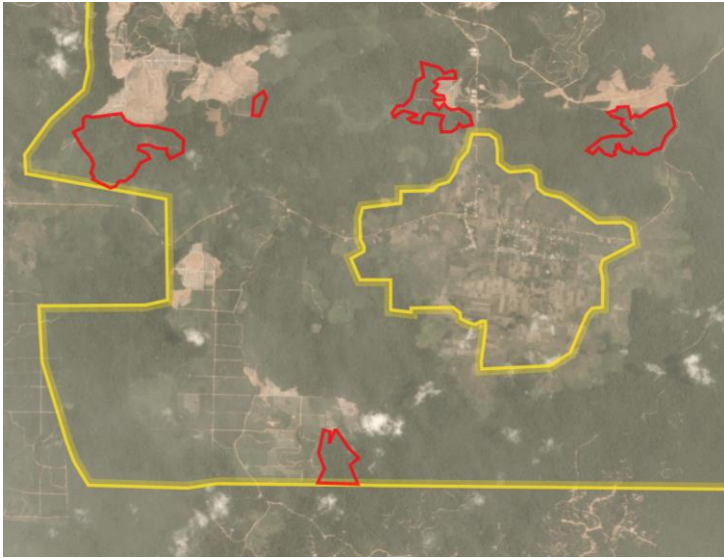
Case Notes

This case was included in Rapid Response report.

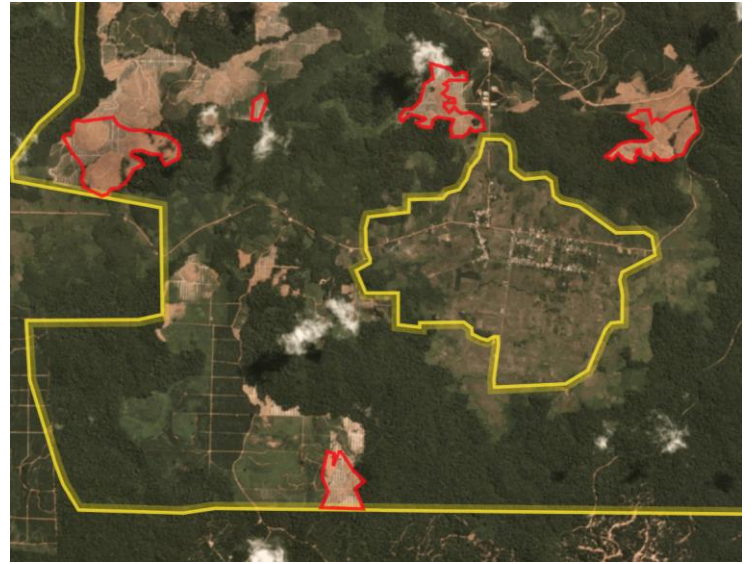
Since publishing the report, Wilmar has informed Mighty Earth that a 'stop work order' was put in place following a meeting with Genting on April 17, 2019. However, Planet imagery shows that a significant percentage of the deforestation that took place between March 17 and May 15, 2019 (as highlighted in this report) was conducted after April 17, 2019.

Alert Imagery (before and after satellite images)

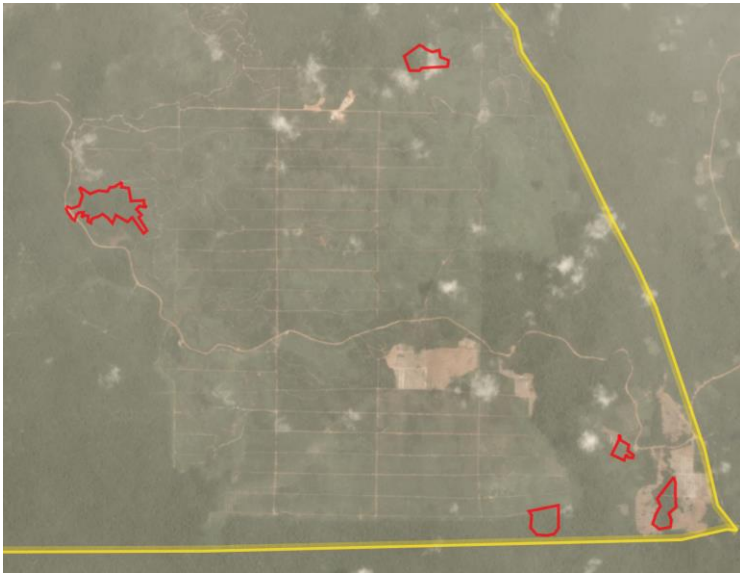
Date: March 17, 2019



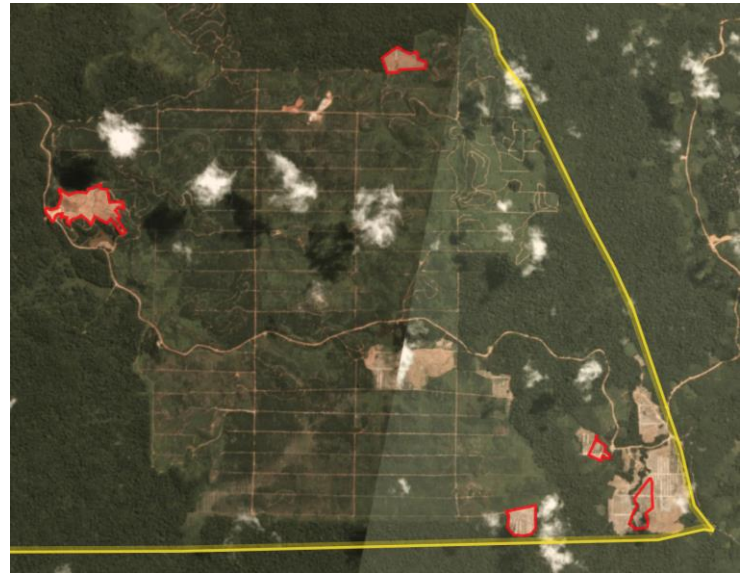
Date: May 15, 2019



Date: March 17, 2019



Date: May 15, 2019



Ownership Information

PT Citra Sawit Cemerlang is a subsidiary of Genting Plantations Bhd.²

2. Genting Plantations Bhd AR 2017, p 139, <http://bit.ly/2TO9wGg>

Supply Chain Information

Supply Chain Links: Traders	AAK	ADM	Bunge LC	Cargill	Fuji Oil	IOI	ISF	KLK
PT Citra Sawit Cemerlang								
Genting Plantations Bhd	x	x	x	x	x	x	x	x

Supply Chain Links: Traders	Louis Dreyfus	Mewah	Musim Mas	Olam	Pacific Inter-Link (via ISF)	Sime Darby	Wilmar
PT Citra Sawit Cemerlang	x						
Genting Plantations Bhd	x	x	x	x	x	x	x

Supply Chain Links: Consumer Brands	Avon	Colgate-Palmolive	Ferrero	General Mills	Hershey	Kellogg's	Mars
PT Citra Sawit Cemerlang							
Genting Plantations Bhd	x	x	x	x	x	x	x

Supply Chain Links: Consumer Brands	Mondelez	Nestle	PepsiCo	P&G	PZ Cussons	Reckitt Benckiser	Unilever
PT Citra Sawit Cemerlang							
Genting Plantations Bhd	x	x	x	x	x	x	x

Group: Genting Plantations Bhd

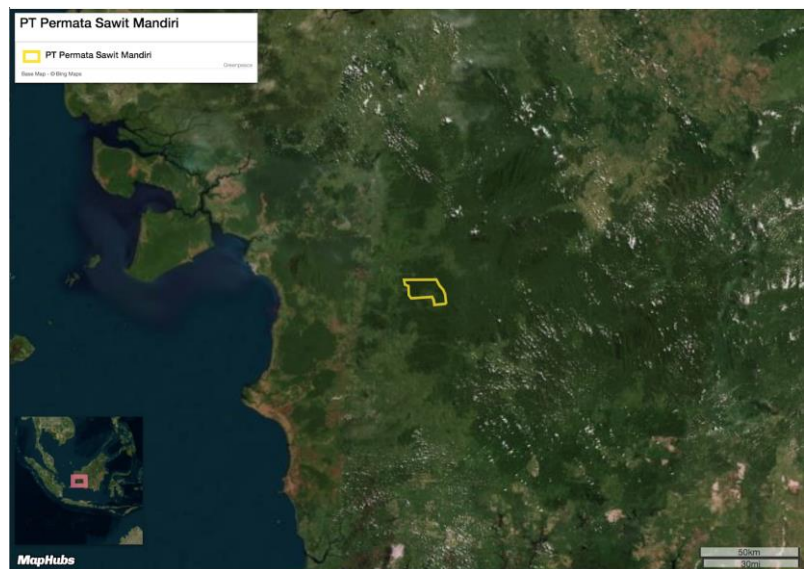
PT Permata Sawit Mandiri

Location: -1.308, 110.6

Deforestation and/or peat development

Report	Deforestation (ha)	Peat development (ha)	Peat forest development (ha)	Clearance prep/Stacking lines (ha)	Time period
Report 15	84	-	-	-	April 4 – May 15, 2019

Satellite imagery (see below) shows that between April 4, 2019 and May 15, 2019 a total of 84 hectares of forest were cleared in the PT Permata Sawit Mandiri concession. (Imagery © 2019 Planet Labs Inc.)

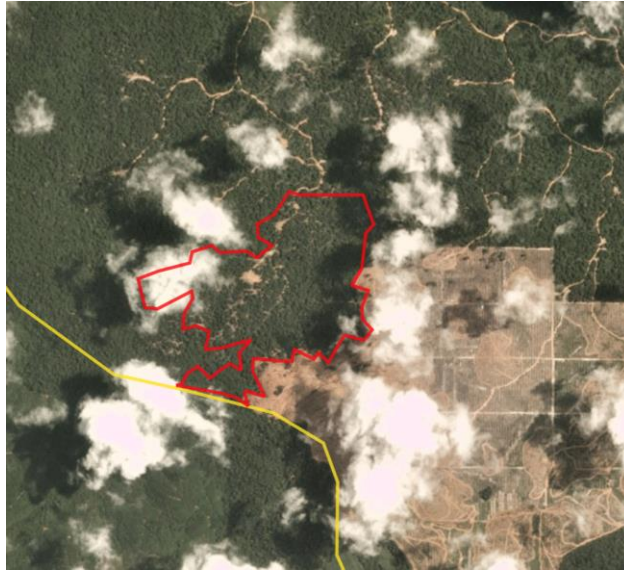


Alert Imagery (before and after satellite images)

Date: April 4, 2019



Date: May 15, 2019



Ownership Information

PT Permata Sawit Mandiri is an indirect subsidiary of Genting Plantations Bhd.³

Supply Chain Information

Supply Chain Links: Traders	AAK	ADM	Bunge LC	Cargill	Fuji Oil	IOI	ISF	KLK
PT Permata Sawit Mandiri								
Genting Plantations Bhd	x	x	x	x	x	x	x	x

Supply Chain Links: Traders	Louis Dreyfus	Mewah	Musim Mas	Olam	Pacific Inter-Link (via ISF)	Sime Darby	Wilmar
PT Permata Sawit Mandiri							
Genting Plantations Bhd	x	x	x	x	x	x	x

3. Genting Plantations Bhd AR 2017, p 157, <http://bit.ly/2TO9wGg>

Supply Chain Information (cont.)

Supply Chain Links: Consumer Brands	Avon	Colgate- Palmolive	Ferrero	General Mills	Hershey	Kellogg's	Mars
PT Permata Sawit Mandiri							
Genting Plantations Bhd	x	x	x	x	x	x	x

Supply Chain Links: Consumer Brands	Mondelez	Nestle	PepsiCo	P&G	PZ Cussons	Reckitt Benckiser	Unilever
PT Permata Sawit Mandiri							
Genting Plantations Bhd	x	x	x	x	x	x	x

Group: Mulia Sawit

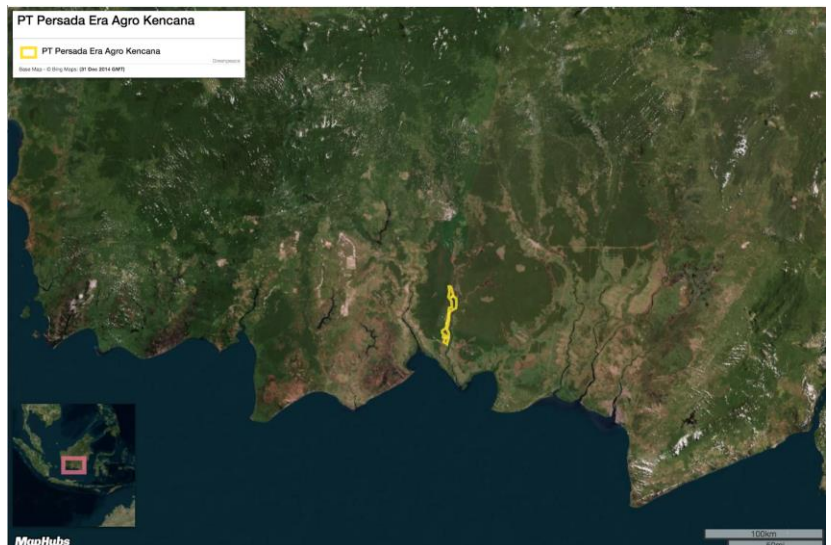
PT Persada Era Agro Kencana

Location: -2.897, 133.0

Deforestation and/or peat development

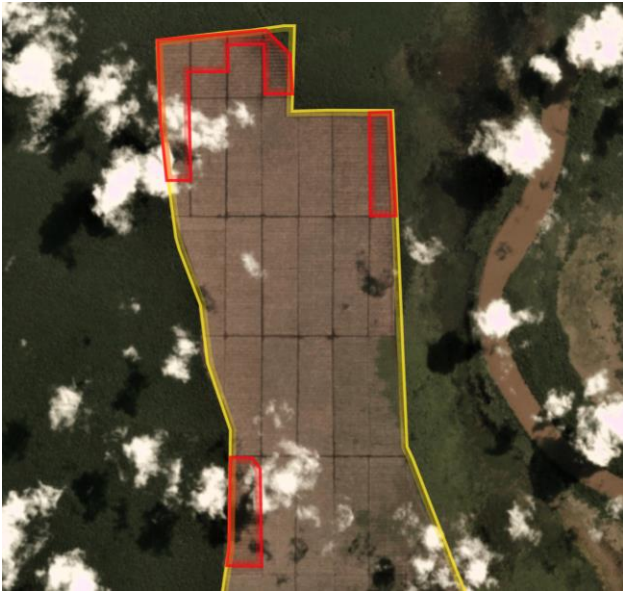
Report	Deforestation (ha)	Peat development (ha)	Peat forest development (ha)	Clearance prep/Stacking lines (ha)	Time period
Report 9	-	-	129	-	Aug 27 – Sept 25, 2018
Report 10	-	383	-	-	Aug 27 – Oct 31, 2018
Report 11	-	200	189	-	Sept 25 – Dec 1, 2018 and Oct 31 – Dec 5, 2018
Report 12	-	-	189	-	Dec 5, 2018 – Jan 7, 2019
Report 15	-	419	144	188	March 19 – May 4, 2019

Satellite imagery (see below) shows that between March 19, 2019 and May 4, 2019 a total of 419 hectares of peatland was cleared, 144 hectares of peat forest were cleared, and 188 hectares of forest were prepared for clearance in the PT Persada Era Agro Kencana concession. (Imagery © 2019 Planet Labs Inc.)



Alert Imagery (before and after satellite images)

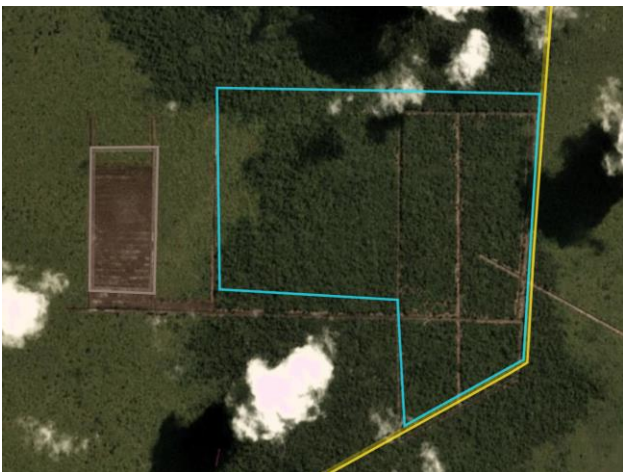
Date: March 19, 2019



Date: May 4, 2019



Date: March 19, 2019



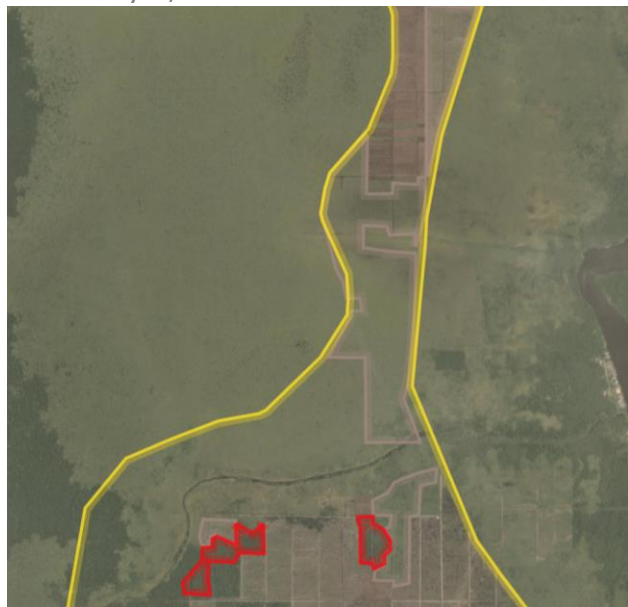
Date: May 4, 2019



Date: March 19, 2019



Date: May 4, 2019



Ownership Information

PT Persada Era Agro Kencana is a subsidiary of Mulia Sawit group. Mulia Sawit group is owned by Kurnia Lukman Goutama, Tjio Andre Yenatha, Kevin Wusman and Sanjaya Lukman. Tjio Andra Yenatha, known as Andre, also serves as a Director of PT Bangun Jaya Alam Permai of the Best Plantation Group.⁴

Supply Chain Information

Supply Chain Links: Traders	AAK	ADM	Fuji Oil	Wilmar
PT Persada Era Agro Kencana				
Mulia Sawit Group	x	x	x	x

Supply Chain Links: Consumer Brands	Avon	Colgate-Palmolive	General Mills	Hershey	Mars	Mondelez	Nestlé	PZ Cussons	Unilever
PT Persada Era Agro Kencana									
Mulia Sawit Group	x	x	x	x	x	x	x	x	x

4. Notary acts related to PT Persada Era Agro Kencana

Family: Widya Corporation

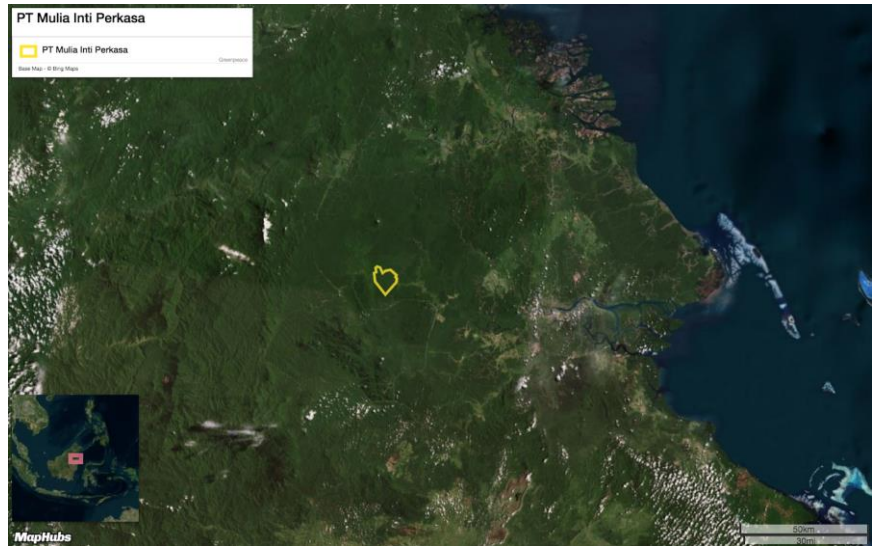
PT Mulia Inti Perkasa

Location: 2.289, 116.9

Deforestation and/or peat development

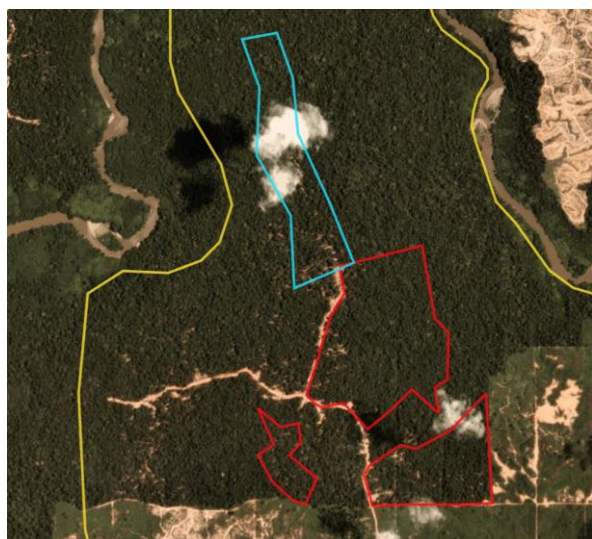
Report	Deforestation (ha)	Peat development (ha)	Peat forest development (ha)	Clearance prep/Stacking lines (ha)	Time period
Report 6	30	-	-	-	May 11 – July 19, 2018
Report 15	119	-	-	46	April 6 – May 8, 2019

Satellite imagery (see below) shows that between April 6, 2019 and May 8, 2019, a total of 119 hectares of forest were cleared and 46 hectares were prepared for clearance in the PT Mulia Inti Perkasa (Imagery © 2019 Planet Labs Inc.)

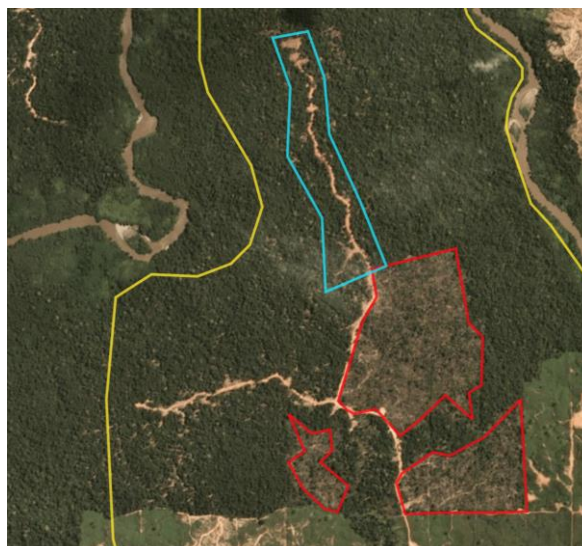


Alert Imagery (before and after satellite images)

Date: April 6, 2019



Date: May 8, 2019



Ownership Information

PT Mulia Inti Perkasa is part of the Widya Corporation. For further information about ownership, see the PT Mulia Inti Perkasa case highlighted in [Rapid Response report 6](#).

Supply Chain Information

Supply Chain Links: Traders	AAK	ADM	Astra	Bunge LC	Fuji Oil	GAR	Wilmar
PT Mulia Inti Perkasa							
Widya Corporation	x	x	x	x	x	x	x

Supply Chain Links: Consumer Brands	Avon	Colgate-Palmolive	General Mills	Hershey	Kellogg's
PT Mulia Inti Perkasa					
Widya Corporation	x	x	x	x	x

Supply Chain Information (cont.)

Supply Chain Links: Consumer Brands	Mars	Mondelez	Nestle	PepsiCo	P&G
PT Mulia Inti Perkasa					
Widya Corporation	x	x	x	x	x

Supply Chain Links: Consumer Brands	PZ Cussons	Reckitt Benckiser	Unilever
PT Mulia Inti Perkasa			
Widya Corporation	x	x	x

Group: Anglo-Eastern Plantations

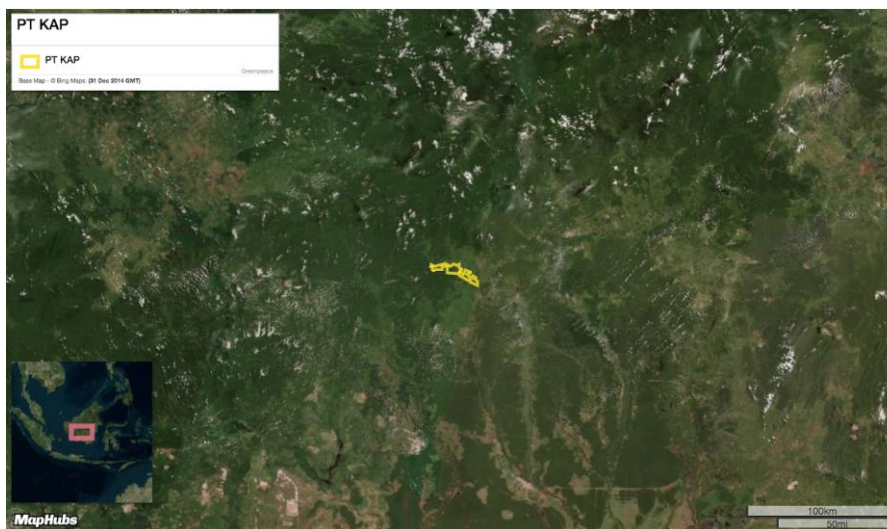
PT Kahayan Agro Plantation

Location: -0.8675, 113.3

Deforestation and/or peat development

Report	Deforestation (ha)	Peat development (ha)	Peat forest development (ha)	Clearance prep/Stacking lines (ha)	Time period
Report 1	420	-	-	-	Oct 16, 2016 – Sept 26, 2017
Report 14	189	-	-	-	May 18, 2018 - April 1, 2019
Report 15	40	-	-	-	April 1 – May 2, 2019

Satellite imagery (see below) shows that a total of 40 hectares of forest were cleared between April 1, 2019 and May 2, 2019 in the PT Kahayan Agro Plantation concession. (Imagery © 2019 Planet Labs Inc.)



Case notes

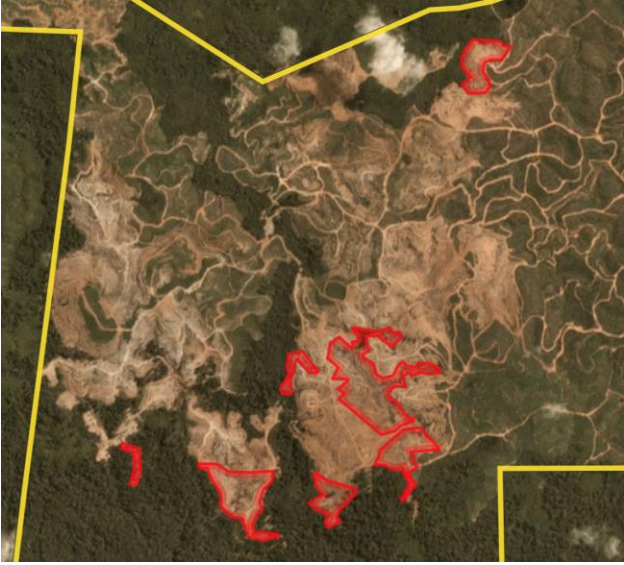
This case was first included in Mighty Earth’s Rapid Response report 1, published in November 2017. According to GAR’s grievance log,⁵ on 18 May 2018 Anglo Eastern Plantations ‘*announced the HCS study at KAP, declared to cease land clearing, and that it would follow the result of the study*’. However, the evidence below indicates that deforestation continued after 18 May 2018. At the time of publishing this report, the HCSA website shows that the HCS study for PT Kahayan Agro Plantation has not completed the peer review process.⁶ Hence, Anglo-Eastern Plantations continues to bypass the HCS peer review process, which is intended to finalise the HCS study quality assurance process.

5. GAR’s grievance log on PT Kahayan Agro Plantation (see “View Progress”), <http://bit.ly/2Dh1u3B>

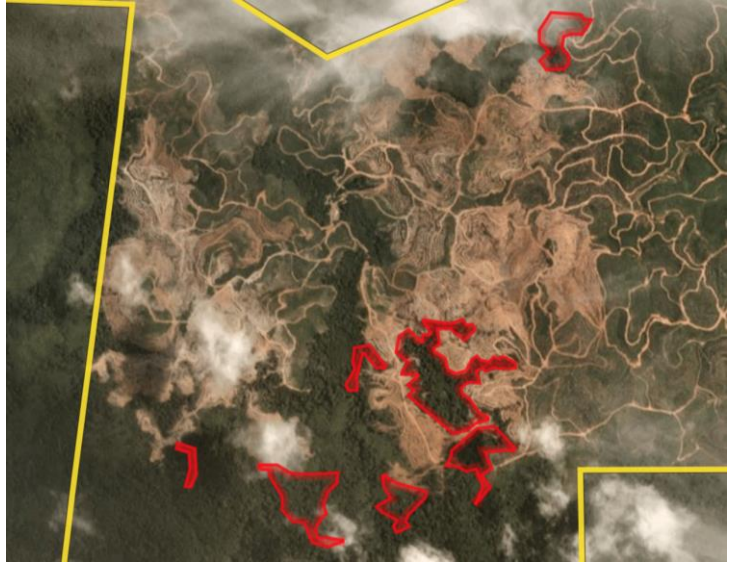
6. HCSA website, <http://bit.ly/2D87wTO>; GAR’s grievance log on PT Kahayan Agro Plantation (see “View Progress”), <http://bit.ly/2Dh1u3B>

Alert Imagery (before and after satellite images)

Date: April 1, 2019



Date: May 2, 2019



Date: April 1, 2019



Date: May 2, 2019



Ownership Information

PT Kahayan Agro Plantation is a subsidiary of Anglo-Eastern Plantations PLC.⁷

⁷ Anglo Eastern Plantations Annual Report 2017, p 93, <http://bit.ly/2D74Rd>

Supply Chain Information

Supply Chain Links: Traders	AAK	ADM	Apical	Bunge LC	Cargill	Fuji Oil	KLK
PT Kahayan Agro Plantation							
Anglo-Eastern Plantations	x	x	x	x	x	x	x

Supply Chain Links: Traders	Louis Dreyfus	Musim Mas	Olam	Pacific Inter-Link (via PT Pacific Indopalm Industries)	PT Pacific Indopalm Industries	Sime Darby	Wilmar
PT Kahayan Agro Plantation							
Anglo-Eastern Plantations	x	x	x	x	x	x	x

Supply Chain Links: Consumer Brands	Avon	Colgate	General Mills	Hershey	Kellogg's
PT Kahayan Agro Plantation					
Anglo-Eastern Plantations	x	x	x	x	x

Supply Chain Links: Consumer Brands	Mars	Nestlé	P&G	Pepsico	Reckit Benckiser
PT Kahayan Agro Plantation					
Anglo-Eastern Plantations	x	x	x	x	x

Group: CB Industrial Product Holding

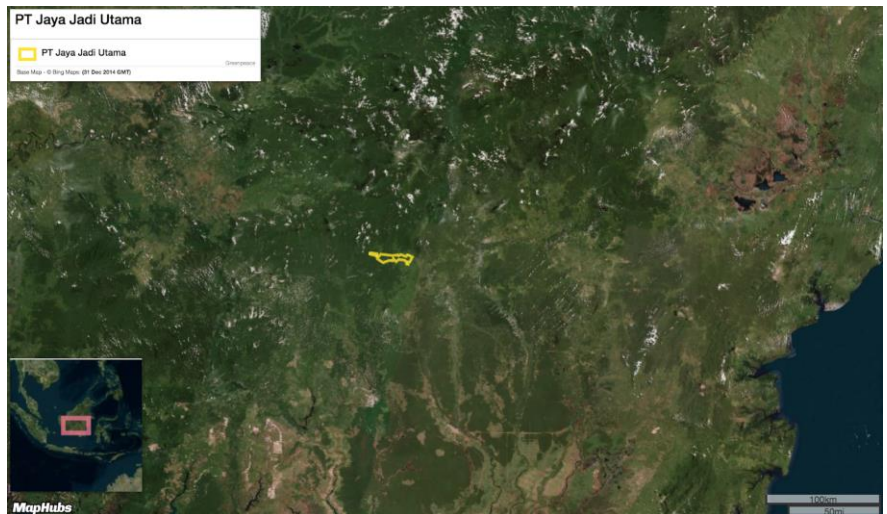
PT Jaya Jadi Utama

Location: -0.8792, 113.3

Deforestation and/or peat development

Report	Deforestation (ha)	Peat development (ha)	Peat forest development (ha)	Clearance prep/Stacking lines (ha)	Time period
Report 15	7	-	-	4	March 15 – May 2, 2019

Satellite imagery (see below) shows that between March 15, 2019 and May 2, 2019 a total of 7 hectares of forest were cleared and 4 hectares were prepared for clearance in the PT Jaya Jadi Utama concession. (Imagery © 2019 Planet Labs Inc.)



Alert Imagery (before and after satellite images)

Date: March 15, 2019

Date: May 2, 2019



Ownership Information

PT Jaya Jadi Utama is a subsidiary of CB Industrial Product Holding Bhd.⁸

Supply Chain Information

Supply Chain Links: Traders	Bunge LC
PT Jaya Jadi Utama	
CB Industrial Product Holding	x

Supply Chain Links: Consumer Brands	Nestle	Reckitt Benckiser	Unilever
PT Jaya Jadi Utama			
Genting Plantations	x	x	x

8. CB Industrial Product Holding Bhd Annual Report 2018, p 117, <https://bit.ly/2VHNoDl>

Group: Samling

Samling Jelalong LPF 0007 Part 1

Location: 3.209, 113.8

Deforestation and/or peat development

Report	Deforestation (ha)	Peat development (ha)	Peat forest development (ha)	Clearance prep/Stacking lines (ha)	Time period
Report 15	-	-	-	28	April 8 – May 12, 2019

Satellite imagery (see below) shows that between April 8, 2019 and May 12, 2019 a total of 28 hectares of forest were prepared for clearance in the Samling Jelalong LPF 0007 Part 1 concession. (Imagery © 2019 Planet Labs Inc.)

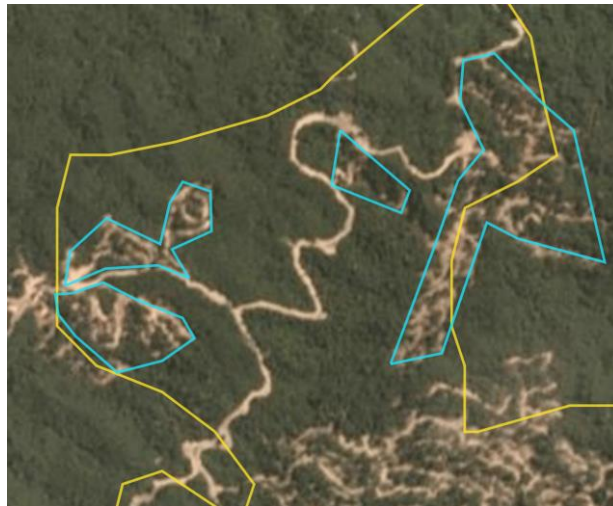


Alert Imagery (before and after satellite images)

Date: April 8, 2019



Date: May 12, 2019



Ownership Information

The Samling Jelalong LPF 0007 concession is part of the Samling Group.¹⁰

Supply Chain Information

Supply Chain Links: Traders	AAK	ADM	Cargill	Fuji Oil	IOI	KLK
Samling Jelalong LPF 0007 Part 1						
Samling	x	x	x	x	x	x

Supply Chain Links: Traders	Olam	Sime Darby	Wilmar
Samling Jelalong LPF 0007			
Samling	x	x	x

10. Samling Group Ltd Public Disclosure, 2007 <http://doc.irasia.com/listco/hk/samling/circulars/c20214-etn20071022285.pdf>

Supply Chain Information (cont.)

Supply Chain Links: Consumer Brands	Avon	Colgate- Palmolive	General Mills	Hershey	Kellogg's	Mars	Mondelez
Samling Jelalong LPF 0007 Part 1							
Samling	x	x	x	x	x	x	x

Supply Chain Links: Consumer Brands	Nestle	PepsiCo	P&G	PZ Cussons	Reckitt Benckiser	Unilever
Samling Jelalong LPF 0007 Part 1						
Samling	x	x	x	x	x	x

Group: Samling

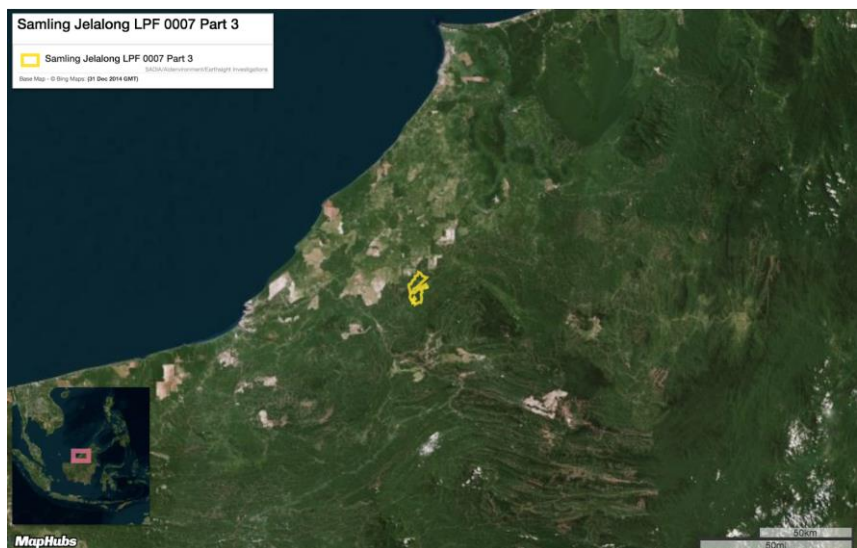
Samling Jelalong LPF 0007 Part 3

Location: 3.316, 113.8

Deforestation and/or peat development

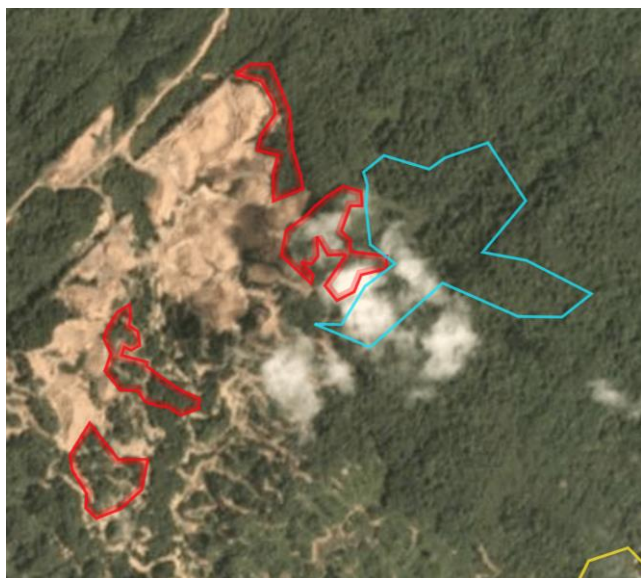
Report	Deforestation (ha)	Peat development (ha)	Peat forest development (ha)	Clearance prep/Stacking lines (ha)	Time period
Report 15	13	-	-	20	Feb 12 – May 12, 2019

Satellite imagery (see below) shows that between February 12, 2019 and May 12, 2019 a total of 13 hectares of forest were cleared and 20 hectares were prepared for clearance in the Samling Jelalong LPF 0007 Part 3 concession. (Imagery © 2019 Planet Labs Inc.)

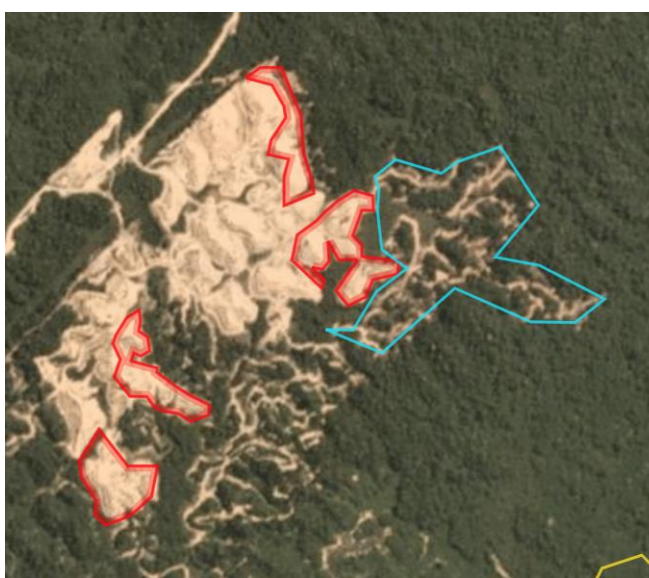


Alert Imagery (before and after satellite images)

Date: February 12, 2019



Date: May 12, 2019



Ownership Information

The Samling Jelalong LPF 0007 Part 3 concession is part of the Samling Group.

Supply Chain Information

Supply Chain Links: Traders	AAK	ADM	Cargill	Fuji Oil	IOI	KLK
Samling Jelalong LPF 0007 Part 3						
Samling	x	x	x	x	x	x

Supply Chain Links: Traders	Olam	Sime Darby	Wilmar
Samling Jelalong LPF 0007 Part 3			
Samling	x	x	x

Supply Chain Information (cont.)

Supply Chain Links: Consumer Brands	Avon	Colgate-Palmolive	General Mills	Hershey	Kellogg's	Mars	Mondelez
Samling Jelalong LPF 0007 Part 3							
Samling	x	x	x	x	x	x	x

Supply Chain Links: Consumer Brands	Nestle	PepsiCo	P&G	PZ Cussons	Reckitt Benckiser	Unilever
Samling Jelalong LPF 0007 Part 3						
Samling	x	x	x	x	x	x

Group: Samling

Samling-Lana LPF 0006

Location: 3.311, 113.8

Deforestation and/or peat development

Report	Deforestation (ha)	Peat development (ha)	Peat forest development (ha)	Clearance prep/Stacking lines (ha)	Time period
Report 11	104	-	-	-	September 12 – November 30, 2018
Report 15	63	-	-	80	Feb 25 – May 15, 2019

Satellite imagery (see below) shows that between February 25, 2019 and May 15, 2019 a total of 63 hectares of forest were cleared and 80 hectares were prepared for clearance in the Samling-Lana LPF 0006 concession. (Imagery © 2019 Planet Labs Inc.)



Alert Imagery (before and after satellite images)

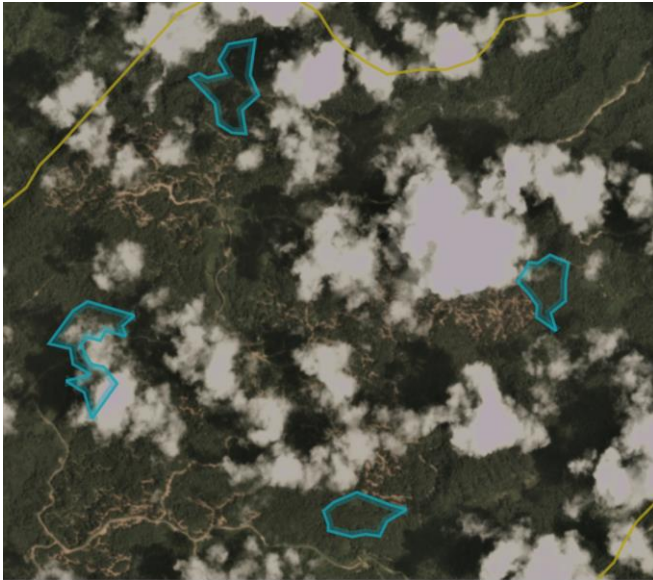
Date: February 25, 2019



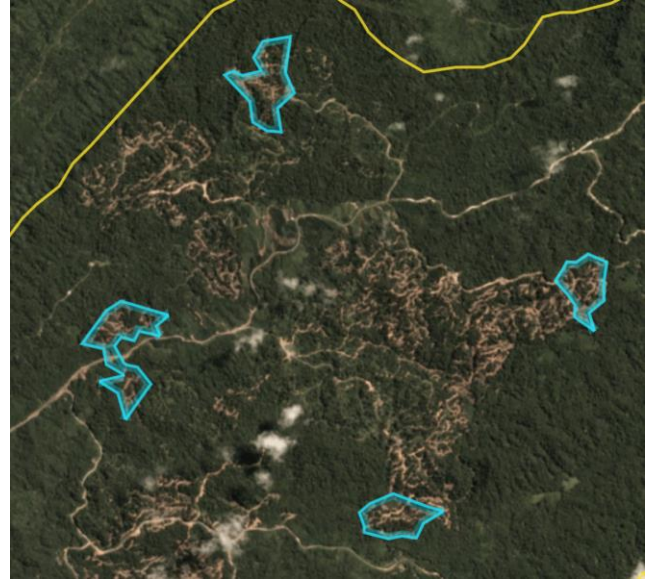
Date: May 15, 2019



Date: February 25, 2019



Date: May 15, 2019



Ownership Information

The Samling-Lana LPF 0006 concession is part of the Samling Group.¹¹ For further information about ownership, see the same case highlighted in [Rapid Response report 11](#).

11. Samling website, http://www.samling.com/sic_pubsummary.php

Supply Chain Information

Supply Chain Links: Traders	AAK	ADM	Cargill	Fuji Oil	IOI	KLK
Samling Lana LPF 0006						
Samling	x	x	x	x	x	x

Supply Chain Links: Traders	Olam	Sime Darby	Wilmar
Samling Lana LPF 0006			
Samling	x	x	x

Supply Chain Links: Consumer Brands	Avon	Colgate-Palmolive	General Mills	Hershey	Kellogg's	Mars	Mondelez
Samling Lana LPF 0006							
Samling	x	x	x	x	x	x	x

Supply Chain Links: Consumer Brands	Nestle	PepsiCo	P&G	PZ Cussons	Reckitt Benckiser	Unilever
Samling Lana LPF 0006						
Samling	x	x	x	x	x	x

Group: Double Dynasty Sdn Bhd

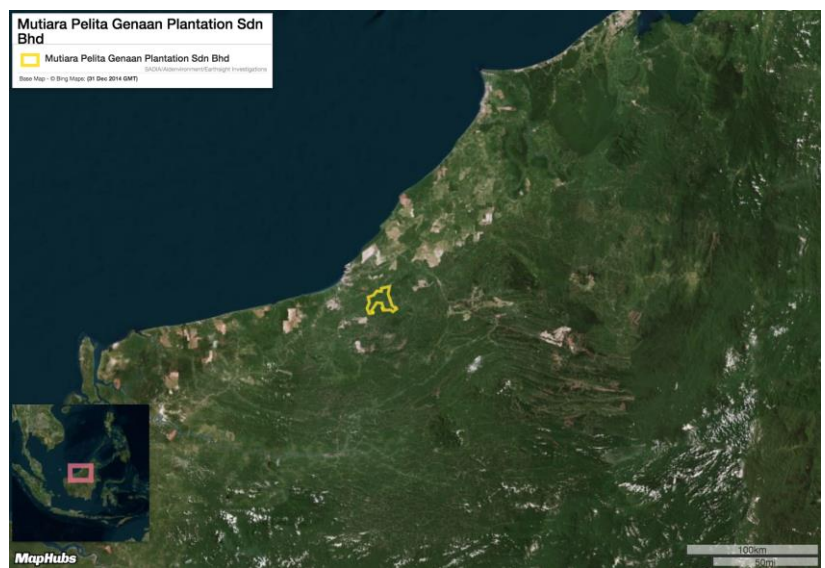
Mutiara Pelita Genaan Plantation Sdn Bhd

Location: 3.112, 113.2

Deforestation and/or peat development

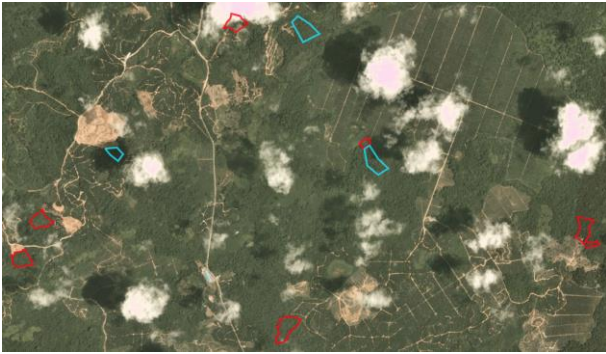
Report	Deforestation (ha)	Peat development (ha)	Peat forest development (ha)	Clearance prep/Stacking lines (ha)	Time period
Report 15	22	-	-	9	Feb 25 – April 29, 2019

Satellite imagery (see below) shows that between February 25, 2019 and April 29, 2019 a total of 22 hectares of forest were cleared and 9 hectares were prepared for clearance in the Mutiara Pelita Genaan Plantation Sdn Bhd concession. (Imagery © 2019 Planet Labs Inc.)

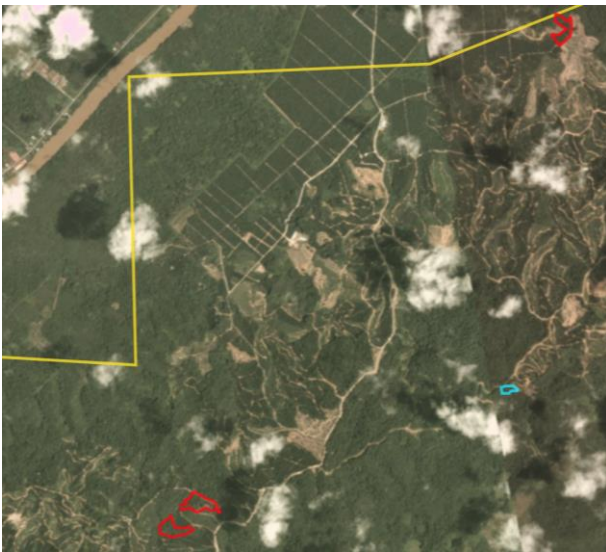


Alert Imagery (before and after satellite images)

Date: February 25, 2019



Date: February 25, 2019



Date: April 29, 2019



Date: April 29, 2019



Ownership Information

Mutiara Pelita Genaan Plantation Sdn Bhd is part of the Double Dynasty Group.

Mutiara Pelita Genaan Plantation Sdn Bhd is 40% owned by DD Plantations Sdn Bhd (Double Dynasty Group), through Mutiara Hartabumi Sdn Bhd. The remaining 60% is registered to the Sarawak State, the Land Custody and Development Authority through Pelita Holdings Sdn Bhd.¹²

Supply Chain Information

Supply Chain Links: Traders	ADM	Bunge LC	Fuji Oil
Mutiara Pelita Genaan Plantation Sdn Bhd			
Double Dynasty	x	x	x

12. Company profiles obtained from the Companies Commission of Malaysia.

Supply Chain Information (cont.)

Supply Chain Links: Consumer Brands	Avon	Colgate- Palmolive	General Mills	Hershey	Kellogg's	Mars	Mondelez
Mutiara Pelita Genaan Plantation Sdn Bhd							
Double Dynasty	x	x	x	x	x	x	x

Supply Chain Links: Consumer Brands	Nestle	PepsiCo	P&G	PZ Cussons	Reckitt Benckiser	Unilever
Mutiara Pelita Genaan Plantation Sdn Bhd						
Double Dynasty	x	x	x	x	x	x

Group: TH Plantations Bhd

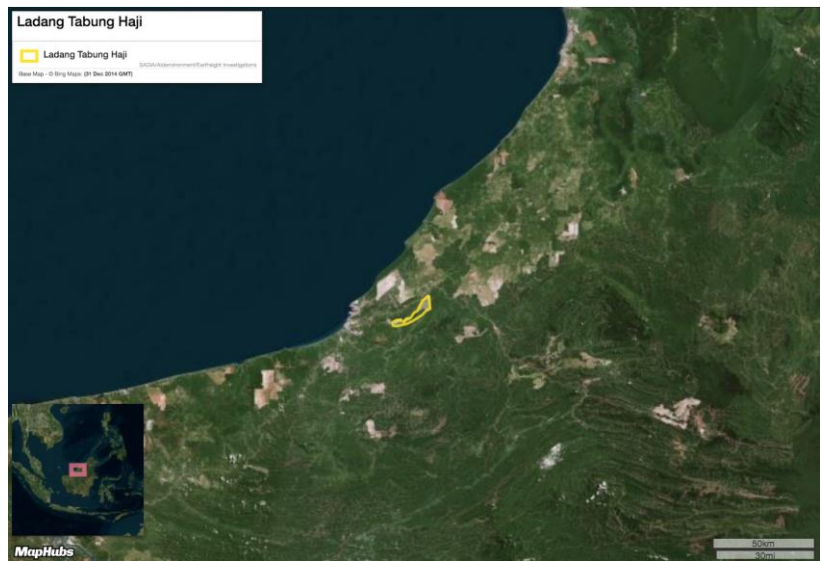
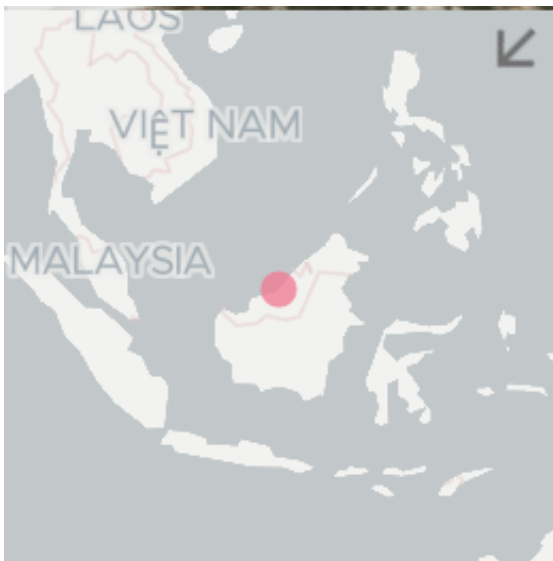
Ladang Tabung Haji

Location: 3.222, 113.3

Deforestation and/or peat development

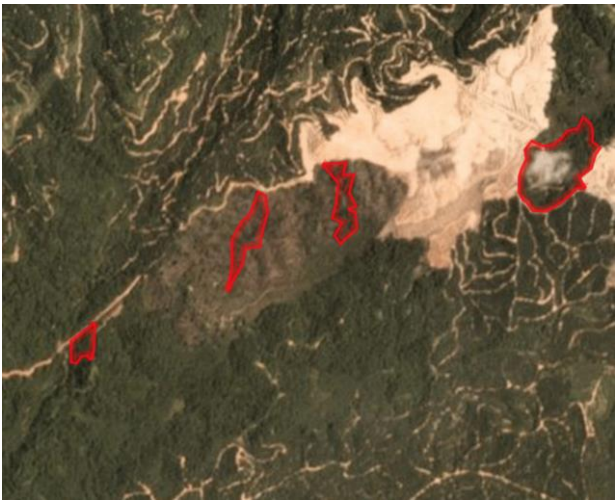
Report	Deforestation (ha)	Peat development (ha)	Peat forest development (ha)	Clearance prep/Stacking lines (ha)	Time period
Report 15	22	-	-	-	March 24 – May 10, 2019

Satellite imagery (see below) shows that between March 24, 2019 and May 10, 2019 a total of 22 hectares of forest were cleared in the Labang Tabung Haji concession. (Imagery © 2019 Planet Labs Inc.)



Alert Imagery (before and after satellite images)

Date: March 24, 2019



Date: May 10, 2019



Date: March 24, 2019



Date: May 10, 2019



Ownership Information

Ladang Tabung Haji is part of TH Plantations Bhd.¹³

Supply Chain Information

Supply Chain Links: Traders	AAK	ADM	Cargill	Felda IFFCO Oil Products	Fuji Oil	ISF	KLK
Ladang Tabung Haji	x		x				
TH Plantations Bhd	x	x	x	x	x	x	x

13. TH Plantations Bhd website, http://www.thplantations.my/group_structure.php

Supply Chain Information (cont.)

Supply Chain Links: Traders	Louis Dreyfus	Mewah	Musim Mas	Olam	Pacific Inter-Link (via Felda IFFCO Oil Products)	Sime Darby
Ladang Tabung Haji						
TH Plantations Bhd	x	x	x	x	x	x

Supply Chain Links: Consumer Brands	Avon	Colgate-Palmolive	General Mills	Hershey	Kellogg's	Mondelez
Ladang Tabung Haji			x		x	x
TH Plantations Bhd	x	x	x	x	x	x

Supply Chain Links: Consumer Brands	Nestle	PepsiCo	P&G	PZ Cussons	Reckitt Benckiser	Unilever
Ladang Tabung Haji	x	x				
TH Plantations Bhd	x	x	x	x	x	x

Group: Shin Yang / Sarawak Oil Palms Bhd

Shin Yang LPF 0018

Location: 2.733, 114.3

Deforestation and/or peat development

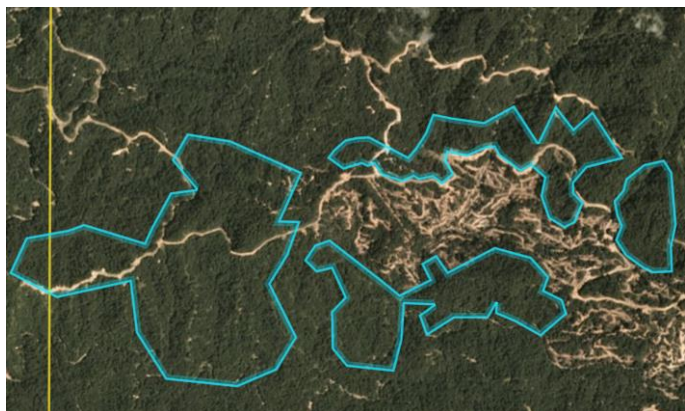
Report	Deforestation (ha)	Peat development (ha)	Peat forest development (ha)	Clearance prep/Stacking lines (ha)	Time period
Report 15	-	-	-	214	Feb 20 – May 13, 2019

Satellite imagery (see below) shows that between February 20, 2019 and May 13, 2019 a total of 214 hectares of forest were prepared for clearance in the Shin Yang LPF 0018 concession. (Imagery © 2019 Planet Labs Inc.)



Alert Imagery (before and after satellite images)

Date: February 20, 2019



Date: May 13, 2019



Ownership Information

The Shin Yang LPF 0018 concession is part of the Shin Yang Group,¹⁴ which is involved in the oil palm and timber business in Sarawak.

Tan Sri Datuk Ling Chiong Ho is founder of the Shin Yang Group, and serves as the Chairman of Shin Yang Holding Sdn Bhd and Sarawak Oil Palms Bhd. Tan Sri Datuk Ling Chiong Ho and his brothers - Ling Chiong Sing, Ling Chiong Pin and Ling Chiong Sieng - are substantial shareholders of Shin Yang Holding Sdn Bhd. Tan Sri Datuk Lin Chiong Ho, Ling Chiong Sing and Lin Lu Kwang (the eldest son of Tan Sri Datuk Lin Chiong Ho) are substantial shareholders of Sarawak Oil Palms Bhd.

Supply Chain Information

Supply Chain Links: Traders	AAK	ADM	Bunge LC	Cargill	Fuji Oil	Louis Dreyfus	Olam	Sime Darby
Shin Yang LPF 0018								
Shin Yang / Sarawak Oil Palms Bhd	x	x	x	x	x	x	x	x

14. Shin Yang Group website, <https://bit.ly/2YrZoG0>

Supply Chain Information (cont.)

Supply Chain Links: Consumer Brands	General Mills	Kellogg's	Nestle	P&G	Reckitt Benckiser	Unilever
Shin Yang LPF 0018						
Shin Yang / Sarawak Oil Palms Bhd	x	x	x	x	x	x

Group: Ta Ann

Ladang Selezu Sdn Bhd

Location: - 0.5129, 109.5

Deforestation and/or peat development

Report	Deforestation (ha)	Peat development (ha)	Peat forest development (ha)	Clearance prep/Stacking lines (ha)	Time period
Report 15	15	-	-	-	Feb 19 – May 7, 2019

Satellite imagery (see below) shows that between February 19, 2019 and May 7, 2019 a total of 15 hectares of forest were cleared in the Ladang Selezu Sdn Bhd concession. (Imagery © 2019 Planet Labs Inc.)



Alert Imagery (before and after satellite images)

Date: February 19, 2019

Date: May 7, 2019



Ownership Information

Ladang Selezu Sdn Bhd is part of the Ta Ann Group.

Ladang Selezu Sdn Bhd is 100% owned by Palmhead Holdings Sdn Bhd, which is owned by key individuals and directors of the Ta Ann Group.¹⁵ For example, the three founders of Ta Ann - Datuk Wahab Bin Haji Dolah, Datuk Amar Abdul Hamed Bin Haji Sepawi and Dato Wong Kuo Hea - all hold deemed interests in Palmhead Holdings Sdn Bhd through multiple holding companies.^{16, 17}

Supply Chain Information

Supply Chain Links: Traders	ADM	Bunge LC	Cargill	Fuji Oil	Olam	Sime Darby	Wilmar
Ladang Selezu Sdn Bhd							
Ta Ann	x	x	x	x	x	x	x

Supply Chain Links: Consumer Brands	Avon	Colgate-Palmolive	General Mills	Hershey	Kellogg's	Mars
Ladang Selezu Sdn Bhd						
Ta Ann	x	x	x	x	x	x

15. Company profile obtained from the Companies Commission of Malaysia.

16. Ta Ann circular to shareholders (April 2018), p 25, http://disclosure.bursamalaysia.com/FileAccess/apbursaweb/download?id=185913&name=EA_DS_ATTACHMENTS

17. Ta Ann Annual Report 2018, p 1, [https://cdn1.i3investor.com/my/files/st88k/5012_TAANN/annual/2018-12-31/5012_TAANN_AnnualReport_2018-12-31_Ta%20Ann%20Annual%20Report%202018%20\(Part%201\)_-2122235602.pdf](https://cdn1.i3investor.com/my/files/st88k/5012_TAANN/annual/2018-12-31/5012_TAANN_AnnualReport_2018-12-31_Ta%20Ann%20Annual%20Report%202018%20(Part%201)_-2122235602.pdf)

Supply Chain Information (cont.)

Supply Chain Links: Consumer Brands	Nestle	PepsiCo	P&G	PZ Cussons	Reckitt Benckiser	Unilever
Ladang Selezu Sdn Bhd						
Ta Ann	x	x	x	x	x	x

Additional cases identified using screened GLAD alerts

The following cases have been identified through screened GLAD alerts (see methodology below). As Mighty Earth did not determine any supply chain links for these concessions/Groups, no Planet image analysis was conducted for these cases to save resources.

Mighty Earth expects that palm oil traders conduct their own due diligence to determine if they are exposed to such companies/Groups. Further, traders without supply chain links to these cases should put them on their 'no buy' lists.

Methodology:

For Indonesia, GLAD alerts are screened using the Indonesia Ministry of Forestry and the Environment land cover dataset for 2017 which classifies existing palm oil plantations and primary and secondary forest. Hence, only GLAD alerts in primary and secondary forest according to that dataset.

For Malaysia, GLAD alerts are screened to exclude known plantation areas using the Global Forest Watch (GFW) plantations dataset. This automatically eliminates the most common false positives, i.e. the replanting of palm that existed prior to the year 2000.

Concession/ license area	Group/ownership	Area covered by screened GLAD alerts (ha)	Time period	Previous cases of deforestation and/or peat development
PT Kartika Cipta Pratama	Hayel Saeed Anam Group	~166	March 31 - April 29, 2019	Rapid Response report 13
PT Kayan Plantation	KPP Group	~81	March 31 - April 29, 2019	
PT Palmakharisma Sekawan	Unknown	~77	March 31 - April 29, 2019	Rapid Response report 9
PT Sawit Berkat Sejahtera	Unknown	~69	March 31 - April 29, 2019	
PT Berau Karetindo Lestari	Korompis Family and Peak Capital	~51	March 31 - April 29, 2019	Rapid Response report 2
PT Sumber Sawit Mitrajaya	Mitra Jaya Group	~45	March 31 - April 29, 2019	
PT Sawit Mandiri Lestari	Metro Lestari Jaya Group	~38	March 31 - April 29, 2019	Rapid Response report 14
PT Borneo Agro Sawit	Unknown	~37	March 31 - April 29, 2019	Rapid Response report 11
PT Malindo Jaya Diraja	Mariya Family	~28	March 31 - April 29, 2019	Rapid Response report 13

Concession license area	Group/ownership	Area covered by screened GLAD alerts (ha)	Time period	Previous cases of deforestation and/or peat development
Danum Sinar (Sarawak)	Puncak Niaga Holdings	~166	March 31 - April 29, 2019	
PT Marita Makmur Jaya	Unknown	~104	March 31 - April 29, 2019	
PT Borneo Estate Sejahtera	Unknown	~66	March 31 - April 29, 2019	
PT Repindo Jaya Sawit Sejati	Unknown	~59	March 31 - April 29, 2019	