



# Mighty Earth Rapid Response Report 13

## **Indonesian companies:**

HSA Group - PT Kartika Cipta Pratama  
Mariya Family - PT Malindo Jaya Diraja  
Palma Serasih - PT Global Primatama Mandiri  
PT Rimbun Sawit Papua  
Shanghai Xinjiu Chemical Co. Ltd. - PT Sebaung Sawit Plantation

## **Malaysian companies:**

Samling Group - Samling Reforestation (Bintulu) Sdn Bhd  
Shin Yang Group - Linau Sinar Sdn Bhd  
Double Dynasty Group – Radiant Lagoon Sdn Bhd

**February 2019**

Prepared with support from Aidenvironment and MapHubs

# Table of contents

## Indonesian Companies

HSA Group - PT Kartika Cipta Pratama	3
Mariya Family - PT Malindo Jaya Diraja	6
Palma Serasih - PT Global Primatama Mandiri	8
PT Rimbun Sawit Papua	11
Shanghai Xinjiu Chemical Co. Ltd. - PT Sebaung Sawit Plantation	13

## Malaysian Companies

Samling Group - Samling Reforestation (Bintulu) Sdn Bhd	16
Shin Yang Group - Linau Sinar Sdn Bhd	19
Double Dynasty Group – Radiant Lagoon Sdn Bhd	21

References	24
------------	----

## HSA Group

### PT Kartika Cipta Pratama

PT Kartika Cipta Pratama is located in Boven Digoel Regency, Papua. The concession covers a total area of 41,257 hectares<sup>1</sup>.

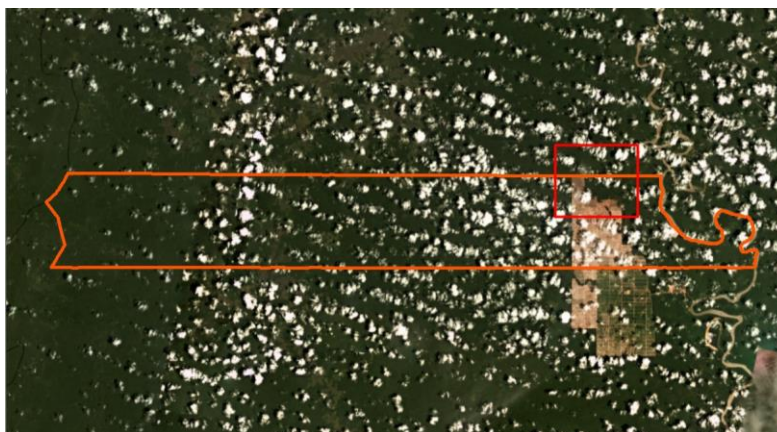
(Long 140°12'31.6"E, Lat 6°20'26.6"S)



#### Deforestation

Report	Deforestation (ha)	Peat development (ha)	Peat forest development (ha)	Clearance prep/Stacking lines (ha)	Time period
Report 5	322	-	-	-	March 31 – May 31 2018
Report 7	828	-	-	-	May 30 – August 13, 2018
Report 9	781	-	-	-	August 13 – October 8, 2018
Report 10	363	-	-	-	October 8 – November 7, 2018
Report 11	227	-	-	-	November 7 – December 6, 2018
Report 12	286	-	-	-	December 6, 2018 – January 11, 2019
Report 13	77	-	-	-	January 11, 2019 – January 31, 2019

Satellite imagery (see below) shows that between January 11, 2019 and January 31, 2019, a total of 77 hectares of forest were cleared in the PT Kartika Cipta Pratama concession. (Imagery Sentinel-2).



## Alert Imagery (before and after satellite images)

Date: Jan 11, 2019

Date: Jan 31, 2019



## Ownership Information

### Group: HSA Group

In 2012, four UAE holding companies (Prestige Holding Ltd., Malindo Investments Ltd, Crescent Investments Ltd, and Green Resources Ltd) believed to be affiliated with the Yemen-based HSA Group purchased 80% stake of each of these four companies located in the Boven Digoel district of West Papua, Indonesia: PT Megakarya Jaya Raya, PT Kartika Cipta Pratama, PT Graha Kencana Mulia and PT Energi Samudera Kencana. PT Megakarya Jaya Raya and PT Kartika Cipta Pratama are two concessions involved in Tanah Merah project in Boven Digoel Regency. These concessions cover a combined 155,330 hectares. Since January 2014, around 5,000 hectares of forest have been cleared in PT Megakarya Jaya Raya and PT Kartika Cipta Pratama.

Up until June 5, 2018, the four plantation companies had Fouad Hayel Saeed Anam listed as President Commissioner on their notary acts. Fouad Hayel Saeed is Regional Director-Malaysia of the HSA Group and Managing Director of Pacific Inter-Link, the group's subsidiary. Legal documents also listed Salah Ahmed Hayel Saeed as Commissioner of PT Energi Samudera Kencana & PT Megakarya Jaya Raya and President Director of PT Graha Kencana Mulia & PT Kartika Cipta Pratama. Hayel Saeed is Director of Pacific Inter-Link's refining division, PT Pacific Palmindo Industri. Recent notary acts confirm that on June 5, 2018, Fouad Hayel Saeed ceased to be President Commissioner of PT Megakarya Jaya Raya and PT Kartika Cipta Pratama, and Salah Ahmed Hayel Saeed is no longer Commissioner of PT Megakarya Jaya Raya and President Director of PT Kartika Cipta Pratama. Nakul Rastogi also disappeared from PT Kartika Cipta Pratama's notary acts.

However, June 5, 2018 notary acts does not show any change in PT Megakarya Jaya Raya, PT Kartika Cipta Pratama, PT Graha Kencana Mulia and PT Energi Samudera Kencana shareholders. Hence, it is assumed that these companies remain affiliated with the HSA Group. Little is known about the new directors of the two concessions, except that some notable individuals in Indonesian politics and business are involved. Mr. Alwi Abdurrahman Shihab, former Foreign Minister of the Indonesian government, has become President Commissioner of PT Megakarya Jaya Ray. Drs. Tommy Sagiman is now the commissioner of PT KCP. He is ex-Inspector General of the police. Nata Singh Gurdev Singh became director of PT Megakarya Jaya Raya in June 2018. Until April 2018, he worked for Sime Darby. Alwi Abdurrahman Shihab is the Indonesian President's special envoy to the Middle East and the Organisation of Islamic Cooperation.

The HSA Group is one of the oldest business conglomerate in the Middle East, founded in 1938 by Al Haj Hayel Saeed Anam and his brothers Mohamed, Abdo and Gazern. The Group is today headed by Abdul Gabbar Hayel Saeed, CEO and Chairman. The HSA Group is involved in the palm oil industry through its subsidiaries PT Pacific Palmindo Industri, PT Pacific Medan Industry, PT Pacific Indopalm Industries, Pacific Oil & Fats Industries and Pacific Inter-Link, which are all RSPO members<sup>2</sup>, and PT Pacific Indomas.

Additional evidence shows continued family links to the PT Tulen Jayamas Timber Industries timber complex, a joint-venture project with Bumimas Raya Sdn Bhd, Pacific Inter-Link Sdn Bhd, Yakin Dijaya Sdn Bhd and Al Salam Bank Bahrain' announced by Tadmax Resources in 2012.<sup>3</sup> The PT Tulen Jayamas Timber Industries timber complex is situated within the PT Kartika Cipta Pratama concession.

Malindo Investments Ltd which holds 80% shares in PT Kartika Cipta Pratama (see above), also holds 40% of the shares in the Malaysian-based parent company of PT Tulen Jayamas Timber Industries – i.e. Tulen Jayamas Sdn Bhd. Mr. Salah Ahmed Hayel Saeed and Mr. Fouad Hayel Saeed Anam are directors of Tulen Jayamas Sdn Bhd, in addition to their positions in the Indonesian subsidiary (PT Tulen Jayamas Timber Industries) as of 28 April 2018.

In the period 21 February 2013 to 24 April 2018, Mr Salah Ahmed Hayel Saeed held 1 share in PT Tulen Jayamas Timber Industries, with the remaining 499 shares held by Tulen Jayamas Sdn Bhd. As of 11 November 2018 Mr Salah Ahmed Hayel Saeed and Mr Fouad Hayel Saeed Anam were no longer directors of Tulen Jayamas Sdn Bhd. However, Malindo Investments Ltd still holds 40% in Tulen Jayamas Sdn Bhd.

Between 24 April 2018 and 13 December 2018, Mr Salah Ahmed Hayel Saeed was no longer a shareholder and director in PT Tulen Jayamas Timber Industries. Also, Mr Fouad Hayel Saeed Anam ceased to be a director in PT Tulen Jayamas Timber Industries.

## Supply Chain Information

The HSA Group company Pacific Inter-Link (PIL) used to trade with IOI and Nestlé, however both companies have suspended trade with the company due to concerns over its involvement in deforestation. Pacific Inter-Link claims to be one of the largest palm oil traders to the Middle East, Africa, Russia, Ukraine and Turkey.<sup>4</sup>

---

<sup>2</sup> <https://www.rspo.org/members/617/PT.-Pacific-Palmindo-Industri>,  
<https://www.rspo.org/members/3152/PT.-Pacific-Medan-Industri>,  
<https://www.rspo.org/members/714/pt-pacific-indopalm-industries>,  
<https://www.rspo.org/members/602/Pacific-Oils-Fats-Industries-Sdn-Bhd>,  
<https://www.rspo.org/members/304/pacific-inter-link-sdn-bhd>

<sup>3</sup> See: Bursa Malaysia [bit.ly/2z9WNq4](http://bit.ly/2z9WNq4) and Tadmax Annual Report 2012  
[bit.ly/2ON2cbE](http://bit.ly/2ON2cbE)

<sup>4</sup> Pacific Inter-Link corporate brochure



## Mariya Family

### PT Malindo Jaya Diraja

PT Malindo Jaya Diraja is located in Tanah Laut and Balangan Regency, South Kalimantan. The concession covers a total area of 31,043 hectares<sup>5</sup>.

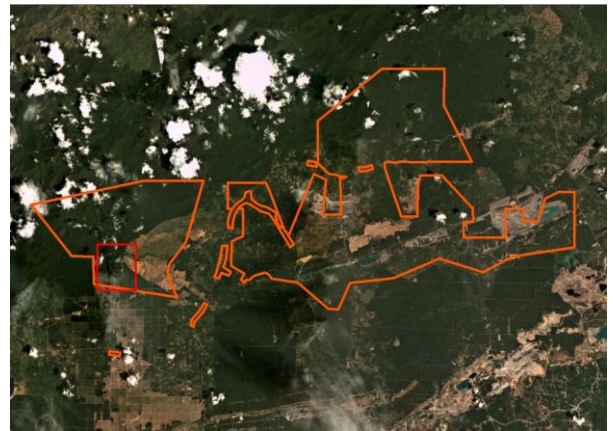
(Long 115° 5'25.86"E, Lat 3°47'22.15"S)



## Deforestation

Report	Deforestation (ha)	Peat development (ha)	Peat forest development (ha)	Clearance prep/Stacking lines (ha)	Time period
Report 13	9	-	-	-	December 20, 2018 – January 12, 2019

Satellite imagery (see below) shows that between December 20, 2018 and January 12, 2019, a total of 9 hectares of forest were cleared in the PT Malindo Jaya Diraja concession. (Imagery © 2019 Planet Labs Inc.)



<sup>5</sup> HGU, 09/HGU/BPN/98

Date: Dec 20, 2018

Date: Jan 12, 2019



## Ownership Information

### Mariya Family

PT Malindo Jaya Diraja is 70% owned by Ms Mariya, who is currently the Commissioner, 20% by Marita family members and 10% by Sidharta<sup>6</sup>.

Identity	Ownership	Position
Mariya	70%	Commissioner
Gulberson Simare Mare	-	Director
Sidharta	10%	-
Jenny Marita	5%	-
Dessy Marita	5%	-
Sally Marita	5%	-
Harry Marita	5%	-

## Supply Chain Information

No supply chain information available.

<sup>6</sup>Notary Act

## Palma Serasih Group

### PT Global Primatama Mandiri

PT Global Primatama Mandiri is located in Berau Regency, North Kalimantan. The concession covers a total area of 7,396 hectares<sup>7</sup>.

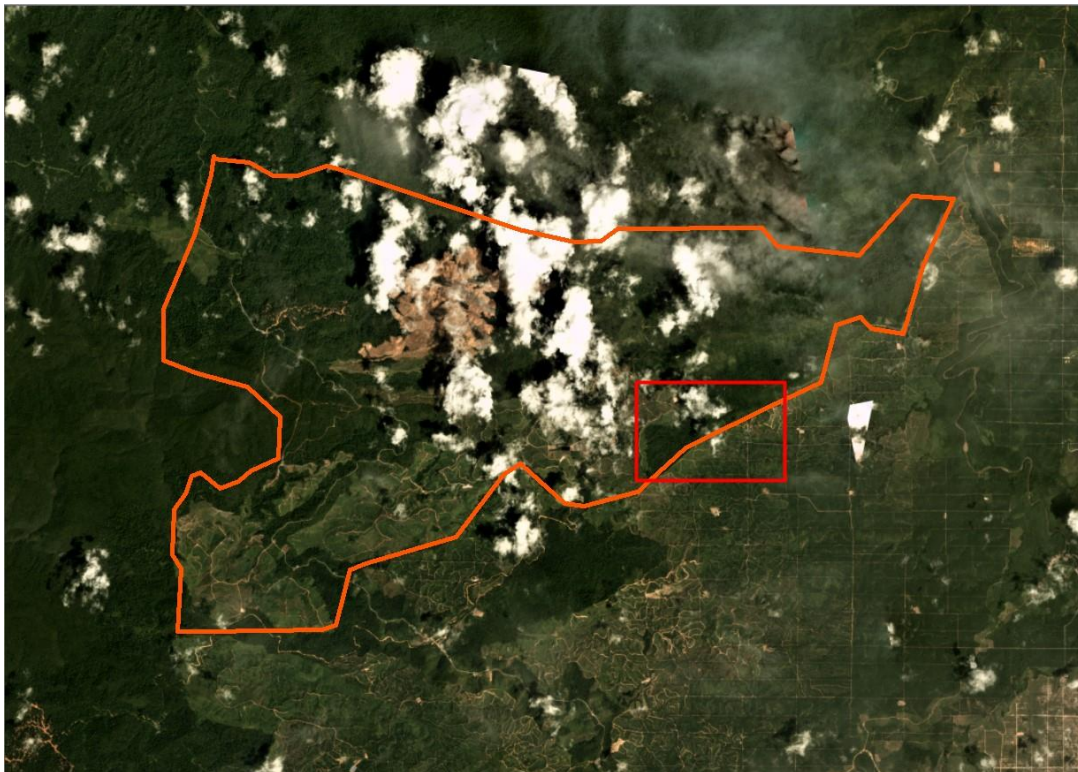
(Long 117° 7'0.09"E, Lat 1°30'37.39"N)



### Deforestation

Report	Deforestation (ha)	Peat development (ha)	Peat forest development (ha)	Clearance prep/Stacking lines (ha)	Time period
Report 13	102	-	-	-	January 4, 2019 – February 7, 2019

Satellite imagery (see below) shows that between January 4, 2019 and February 7, 2019, a total of 102 hectares of forest were cleared in the PT Global Primatama Mandiri concession. (Imagery © 2019 Planet Labs Inc and Sentinel 2.)



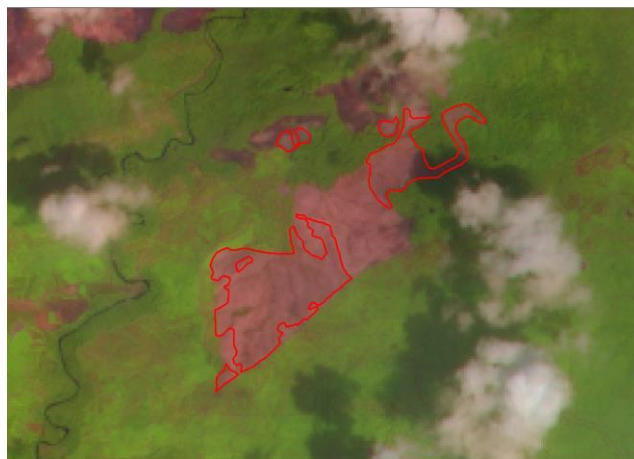
<sup>7</sup> Dinas Perkeunan Kalimantan Tmur, 2016



Alert Imagery (before and after satellite images)

Date: Jan 4, 2019

Date: Feb 7, 2019



## Ownership Information

### Palma Serasih Group

PT Global Primatama Mandiri is part of the Palma Serasih group, controlled by Palma Serasih.<sup>8</sup>

Identity	Ownership	Position
Palma Serasih	98.8%	
Elisabeth Priska Chairul	0.2%	Director

## Supply Chain Information

Traders:

Supply chain links:	AAK	ADM	Apical	Bunge	Cargill	Fuji Oil	GAR
PT Global Primatama Mandiri							
<b>Palma Serasih</b>	<b>X</b>	<b>X</b>	<b>X</b>	<b>X</b>	<b>X</b>	<b>X</b>	<b>X</b>

<sup>8</sup>Notary Act

Traders (cont) :

Supply chain links:	KLK	Musim Mas	Louis Dreyfus	Wilmar
PT Global Primatama Mandiri				
<b>Palma Serasih</b>	<b>X</b>	<b>X</b>	<b>X</b>	<b>X</b>

Consumer Brands:

Supply chain links:	General Mills	Hershey	Kellogg's	Mars	Mondelez	Mars	P&G	PepsiCo	Reckitt Benckiser
PT Global Primatama Mandiri									
<b>Palma Serasih</b>	<b>X</b>	<b>X</b>	<b>X</b>	<b>X</b>	<b>X</b>	<b>X</b>	<b>X</b>	<b>X</b>	<b>X</b>

## PT Rimbun Sawit Papua

PT Rimbun Sawit Papua is located in Fakfak Regency, West Papua. The concession covers a total area of 19,931 hectares<sup>9</sup>. (Long 133° 2'48.08"E, Lat 2°54'14.94"S)



## Deforestation

Report	Deforestation (ha)	Peat development (ha)	Peat forest development (ha)	Clearance prep/Stacking lines (ha)	Time period
Report 3	1070		127		May 17 – November 22, 2017
Report 10	1260		263		December 22, 2017 – October 28, 2018
Report 13	95	-	-	-	January 2, 2019 – January 22, 2019

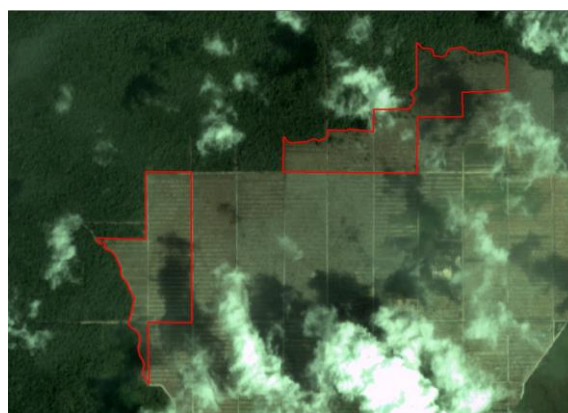
Satellite imagery (see below) shows that between January 2, 2019 and January 22, 2019, a total of 95 hectares of forest were cleared in the PT Rimbun Sawit Papua concession. (Imagery © 2019 Planet Labs Inc).



Alert Imagery (before and after satellite images)

Date: Jan 2, 2019

Date: Jan 22, 2019



## Ownership Information

### PT Rimbun Sawit Papua

PT Rimbun Sawit Papua is owned by Jeff Setiawan Winata (through direct shares), Ir. Daud (through PT Palmandiri Plantation), Junus Sutiono and Watson Dharma. Mr. Junus Sutiono and Mr. Watson Dharma own PT Rimbun Sawit Papua through PT Mulia Abadi Lestari, one of the shareholding companies of PT Duta Rendra Mulya, a Salim owned plantation company.<sup>10</sup>

Identity	Ownership	Position
Mr. Ir. Daud	-	President commissioner
Mr. Jeff Setiawan Winata	20%	Commissioner
Mr. Wiandi Halisantoso	-	President Director
Mr. Rapman Hutabarat	-	Director

## Supply Chain Information

No supply chain information available.

<sup>10</sup> [bit.ly/2TSzGYW](https://bit.ly/2TSzGYW), [bit.ly/2QRsNVN](https://bit.ly/2QRsNVN), Notary Act

# Shanghai Xinjiu Chemical Co. Ltd.

## PT Sebaung Sawit Plantations

PT Sebaung Sawit Plantation is located in Nunukan Regency, North Kalimantan. The concession covers a total area of 8,886 hectares<sup>11</sup>.

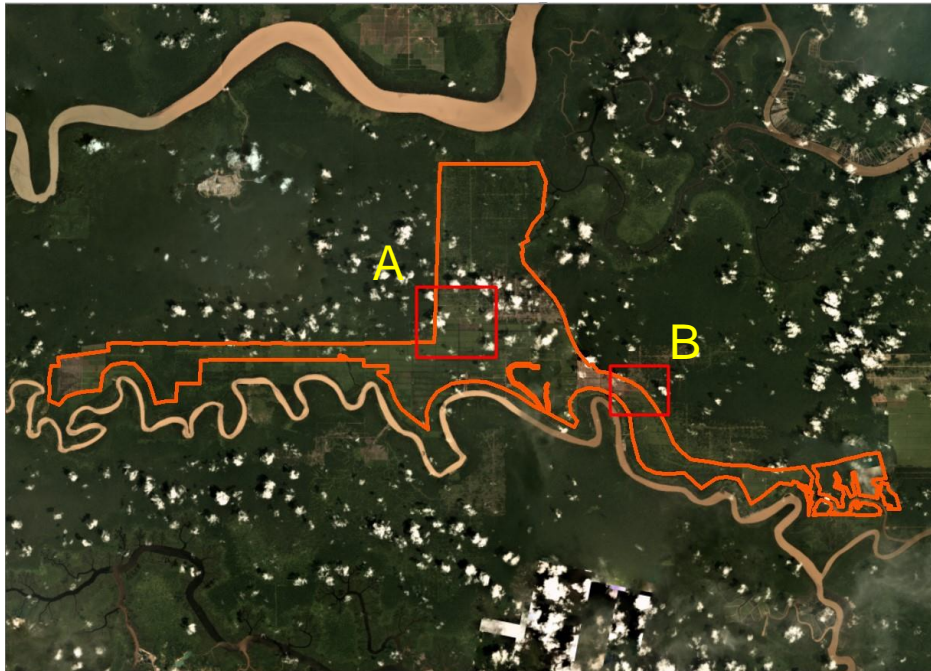
(Long 117°21'45.73"E, Lat 3°51'23.24"N)



### Peat development

Report	Deforestation (ha)	Peat development (ha)	Peat forest clearance (ha)	Clearance prep/ stacking lines (ha)	Time period
Report 8	-	198	-	-	July 25 – September 18, 2018 (A & B) and July 25 – August 29, 2018 (C)
Report 12	-	48	-	-	October 24, 2018 – January 6, 2019
Report 13	-	93	-	-	January 6, 2019 – February 2, 2019

Satellite imagery (see below) shows that between January 6, 2019 and February 2, 2019, a total of 48 hectares of peat were developed in the PT Sebaung Sawit Plantations concession (Imagery © 2019 Planet Labs Inc.)



<sup>11</sup> HGU, 37/HGU/BPN RI/2013

Alert Imagery (before and after satellite images)

Date: Jan 6, 2019



Date: Feb 2, 2019



Date: Jan 6, 2019



Date: Feb 2, 2019



## Ownership Information

### Group: Shanghai Xinjiu Chemical Co. Ltd.

PT Sebaung Sawit Plantations is owned by Shanghai Xinjiu Chemical Co. Ltd (90%) and by PT Citra Makmur Sentosa (10%). Shanghai Xinjiu Chemical Co. Ltd is a China-registered company specializing in fatty acids and derivative products.

Mr. Tjia Ke Seng (alias 'Dachlan'), a Chinese citizen, is the President Director of PT Sebaung Sawit Plantations<sup>12</sup>. He is also the Director of PT Palem Segar Lestari, also located in North Kalimantan.

Identity	Ownership	Position
Mao Chunning	-	President Commissioner
Tjia Ke Seng/Dachlan	-	President Director

## Supply Chain Information

No supply chain information available.

---

<sup>12</sup> Notary Acts

## Samling Group

### LPF/0008 Marudi & Batu Belah

LPF/0008 Marudi & Batu Belah is located in Long Lama and Marudi Regency, Sarawak. The concession covers an area of 31,679 hectares<sup>13</sup>.  
(Long 114°30'22.64"E, Lat 4° 4'16.98"N)



### Forest clearing

Report	Deforestation (ha)	Peat development (ha)	Peat forest clearance (ha)	Clearance prep/ stacking lines (ha)	Time period
Report 13	44				January 7, 2019 – February 16, 2019

Satellite imagery (see below) shows that between January 7, 2019 and February 16, 2019, a total of 44 hectares of forest were cleared in the LPF/0008 Marudi & Batu Belah concession (Imagery © 2018 Planet Labs Inc.). Under the Malaysia regulations relating to LPFs, a proportion of the licensed area can be planted with oil palm.



<sup>13</sup>Sahabat Alam Malaysia maps

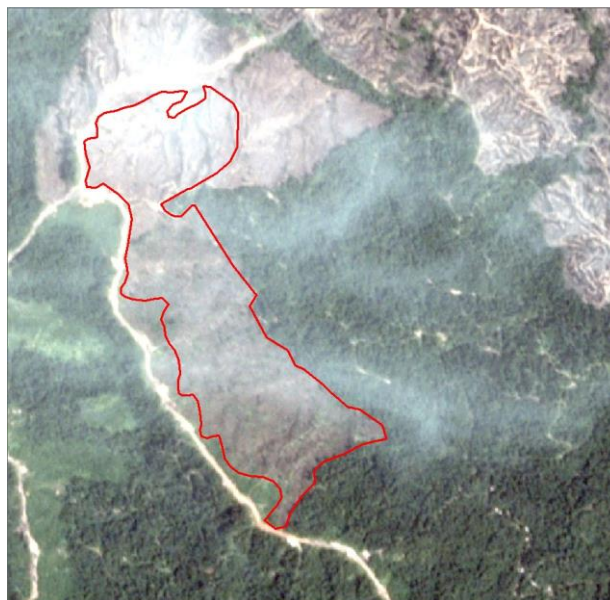


Alert Imagery (before and after satellite images)

Date: Jan 7, 2019



Date: Feb 16, 2019



## Ownership Information

### Group: Samling group

LPF/0008 Marudi & Batu Belah was issued to Samling Reforestation (Bintulu) Sdn Bhd– a subsidiary of Syarikat Samling Timber Sdn Bhd (SST) in Sarawak, Malaysia and a member of Samling group. The Samling group – which was founded by Tan Sri Yaw Teck Seng, a Malaysian businessman – is engaged in timber, oil palm, property and automotive business ventures.<sup>14</sup>

<sup>14</sup>Samling website: [www.samling.com](http://www.samling.com)

## Supply Chain Information

Traders:

Supply chain links:	AAK	ADM	Bunge LC	Cargill	Fuji Oil	IOI	Louis Dreyfus	Olam	Wilmar
<b>Samling Group</b>	X	X	X	X	X	X	X	X	X

Consumer Brands:

Supply chain links:	General Mills	Hershey	Kellogg's	Mars	Mondelez	Nestlé	Pepsi Co	P&G	Reckitt Benckiser	Unilever
<b>Samling Group</b>	X	X	X	X	X	X	X	X	X	X

## Shin Yang Group

### Linau Sinar Sdn Bhd (Metalon OP Estate, Lot 2, Danum LD)

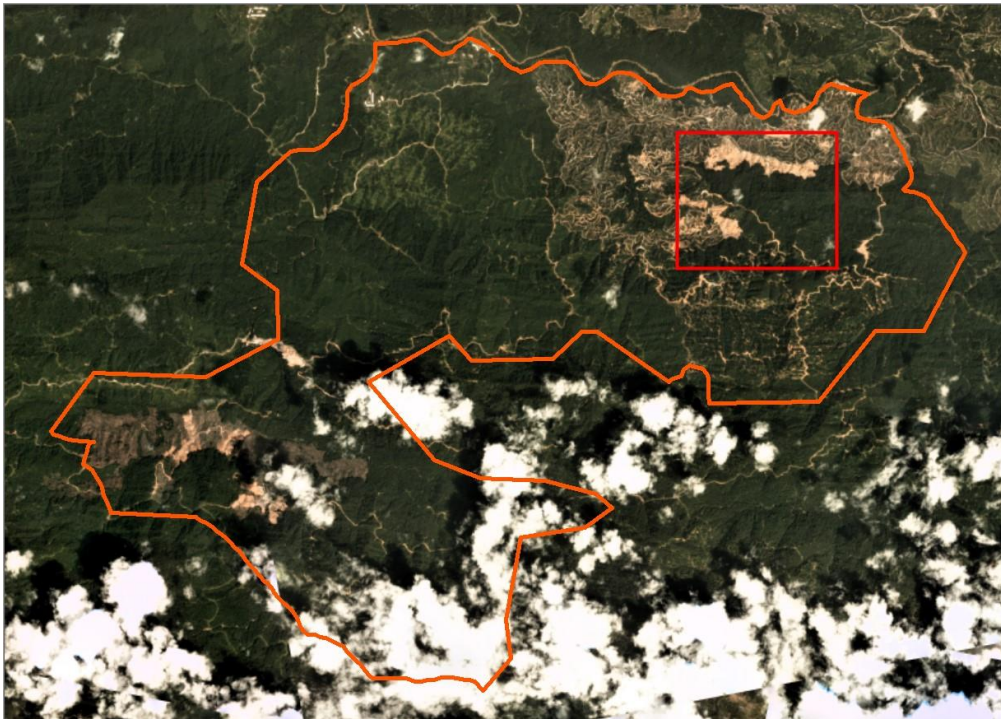
Metalon OP Estate (SY) (Linau Sinar Sbn Bhd, Lot 2, Danum LD) is located in Belaga Regency, Sarawak. The concession covers a total area of 6,951 hectares<sup>15</sup>.  
(Long 114°45'24.59"E, Lat 2°37'30.09"N)



### Peat development

Report	Deforestation (ha)	Peat development (ha)	Peat forest clearance (ha)	Clearance prep/ stacking lines (ha)	Time period
Report 13		10			December 13, 2018 – January 30, 2019

Satellite imagery (see below) shows that between December 13, 2018 and January 30, 2019, a total of 10 hectares of peat was developed in the Linau Sinar Sdn Bhd oil palm concession: Metalon OP Estate, Lot 2, Danum LD (Imagery © 2019 Planet Labs Inc.)



<sup>15</sup> Sarawak Forest Department maps, 2010

Alert Imagery (before and after satellite images)

Date: Dec 13, 2018

Date: Jan 30, 2019



## Ownership Information

### Group: Shin Yang

Linau Sinar Sdn Bhd is wholly owned subsidiary of Shin Yang Holding Sdn Bhd (Shin Yang Group),<sup>16</sup> which is involved in the oil palm and timber business in Sarawak.

Tan Sri Datuk Ling Chiong Ho is founder of the Shin Yang Group, and serves as the Chairman of Shin Yang Holding Sdn Bhd and Sarawak Oil Palms Bhd. Tan Sri Datuk Ling Chiong Ho and his brothers - Ling Chiong Sing, Ling Chiong Pin and Ling Chiong Sieng - are substantial shareholders of Shin Yang Holding Sdn Bhd. Tan Sri Datuk Lin Chiong Ho, Ling Chiong Sing and Lin Lu Kwang (the eldest son of Tan Sri Datuk Lin Chiong Ho) are substantial shareholders of Sarawak Oil Palms Bhd.<sup>17</sup>

## Supply Chain Information

Traders:

Supply chain links:	ADM	Bunge LC	Cargill	Fuji Oil	IOI	Louis Dreyfus	Olam	Sime Darby
<b>Shin Yang Group / Sarawak Oil Palms</b>	X	X	X	X	X	X	X	X

Consumer Brands

Supply chain links:	General Mills	Kellogg's	Nestlé	P&G	Reckitt Benckiser	Unilever
<b>Shin Yang Group / Sarawak Oil Palms</b>	X	X	X	X	X	X

# Double Dynasty Group

## Radiant Lagoon Sdn Bhd

Radiant Lagoon Bhd Sdn is located in Long Lama Regency, Sarawak. Lot 2 and 3 of the concession covers an area of ~4,440 hectares<sup>18</sup>.

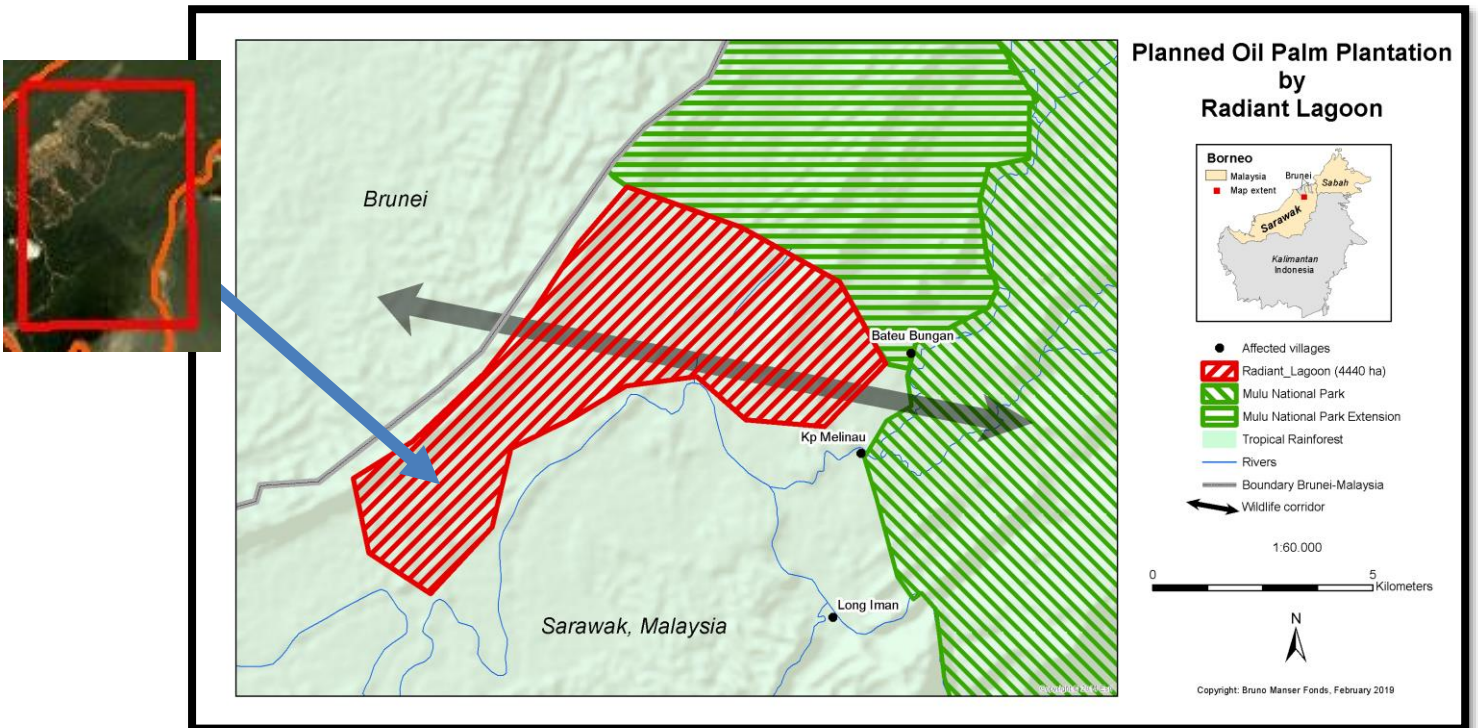
(Long 114°44'31.81"E, Lat 4° 2'54.55"N)



### Forest clearing

Report	Deforestation (ha)	Peat development (ha)	Peat forest clearance (ha)	Clearance prep/ stacking lines (ha)	Time period
Report 13				98	December 31, 2018 – January 20, 2019

Satellite imagery (see below) shows that between December 31, 2018 and January 20, 2019, a total of 98 hectares of forest were cleared or prepared for clearance in the Radiant Lagoon Sdn Bhd concession (Imagery © 2018 Planet Labs Inc.)



<sup>18</sup> Based on map by Alam Malaysia maps.

Alert Imagery (before and after satellite images)

Date: Dec 31, 2018

Date: Jan 20, 2019



### Group: Double Dynasty

Radiant Lagoon Sdn Bhd is a wholly owned subsidiary of Onlyee Plantations Sdn Bhd, which is part of the Double Dynasty group. The group is controlled by Tan Sri Yee Ming Seng and his family.<sup>19</sup>

According to the Bruno Manser Fund (BMF), Radiant Lagoon Sdn Bhd is currently involved in a major controversy with indigenous Penan and Berawan communities as a result of the development of this concession.<sup>20</sup>

### Supply Chain Information

Traders:

Supply chain links:	ADM	Bunge LC	Cargill	Fuji Oil	Louis Dreyfus	Sime Darby	Wilmar
<b>Double Dynasty</b>	<b>X</b>	<b>X</b>	<b>X</b>	<b>X</b>	<b>X</b>	<b>X</b>	<b>X</b>

<sup>19</sup> Companies Commission of Malaysia

<sup>20</sup> <https://bmf.ch/en/news/mpanie>

Consumer Brands:

Supply chain links:	General Mills	Hershey	Kellogg's	Mars	Mondelez	Nestlé	Pepsi
<b>Double Dynasty</b>	<b>X</b>	<b>X</b>	<b>X</b>	<b>X</b>	<b>X</b>	<b>X</b>	<b>X</b>

Supply chain links:	P&G	Reckitt Benckiser	Unilever
<b>Double Dynasty</b>	<b>X</b>	<b>X</b>	<b>X</b>

## Sources for supply chain information:

Supply chain information included in this Rapid Response report is based on the following publicly disclosed sources and corporate communications. Mighty Earth encourages companies to send updated versions of mill disclosures as soon as they become available and any decision to terminate supplies with a given company listed in those mill disclosures; please send to [rapidresponse@mightyearth.org](mailto:rapidresponse@mightyearth.org).

Companies	Source	Link	Date
AAK	Mill disclosure	<a href="https://bit.ly/2RECJ9E">bit.ly/2RECJ9E</a>	Dec-18
ADM	Mill disclosure	<a href="https://bit.ly/2wuPNlm">bit.ly/2wuPNlm</a>	Jun-18
Apical	Mill disclosure SDS-Hamita Utama Karsa, Pundi Lahan Khatulistiwa, Asam Jawa	<a href="https://bit.ly/2K1QoS1">bit.ly/2K1QoS1</a>	Sep-18
Bunge/Bunge Lodgers Croklaan	Mill disclosure	<a href="https://bit.ly/2FiPn7N">bit.ly/2FiPn7N</a>	Jan-19
Cargill	Mill disclosure	<a href="https://bit.ly/2La1p49">bit.ly/2La1p49</a>	Jun-18
Ferrero	Mill disclosure	<a href="https://bit.ly/2SzdHio">bit.ly/2SzdHio</a>	Jun-18
Fuji Oil	Mill disclosure	<a href="https://bit.ly/2HwX5hu">bit.ly/2HwX5hu</a>	Jan-19
GAR	Mill disclosure Lubuk Gaung - Asam Jawa	<a href="https://bit.ly/2DjQ2Xi">bit.ly/2DjQ2Xi</a>	Sep-18
General Mills	Mill disclosure	<a href="https://bit.ly/2PH3G8t">bit.ly/2PH3G8t</a>	
Hershey	Mill disclosure	<a href="https://bit.ly/2PYM3Ez">bit.ly/2PYM3Ez</a>	Jun-18
IOI	Mill disclosure Total IOI Grup Full mill list - Sawai Palm Oil Mill, Igan Palm Oil Mill	<a href="https://bit.ly/2LcN6Mh">bit.ly/2LcN6Mh</a>	Nov-18
	Mill disclosure Oleochemical Prai Full mill list – Sawai Palm Oil Mill, Igan Palm Oil Mill	<a href="https://bit.ly/2RRMw97">bit.ly/2RRMw97</a>	Nov-18
Louis Dreyfus	Mill disclosure	<a href="https://bit.ly/2KtmnKX">bit.ly/2KtmnKX</a>	Nov-18
Mars	Mill disclosure	<a href="https://bit.ly/2VAlbL4">bit.ly/2VAlbL4</a>	Dec-18
Mondelez	Mill disclosure	<a href="https://bit.ly/2Oh8voJ">bit.ly/2Oh8voJ</a>	Mar-18
Musim Mas	Mill disclosure	<a href="https://bit.ly/2O3LbNS">bit.ly/2O3LbNS</a>	Dec-18
Nestlé	Mill disclosure	<a href="https://bit.ly/2AbVHgh">bit.ly/2AbVHgh</a>	Feb-18
Olam	Mill disclosure	<a href="https://bit.ly/2OqVsQx">bit.ly/2OqVsQx</a>	Sep-18
Pacific Inter-Link/HSA	Dashboard	<a href="https://bit.ly/2RR1RqI">bit.ly/2RR1RqI</a>	Dec-18
PepsiCo	Mill disclosure	<a href="https://bit.ly/2TfbQH7">bit.ly/2TfbQH7</a>	2017
P&G	Mill disclosure	<a href="https://bit.ly/2OTRgsH">bit.ly/2OTRgsH</a>	2017
PZ Cussons	Mill disclosure	<a href="https://bit.ly/2EqVklQ">bit.ly/2EqVklQ</a>	Nov-18
Reckitt Benckiser	Mill disclosure	<a href="https://bit.ly/2LopMyw">bit.ly/2LopMyw</a>	2017
Sime Darby	Mill disclosure SDB H&K - Asam Jawa	<a href="https://bit.ly/2EsTMWe">bit.ly/2EsTMWe</a>	Jun-18
	Mill disclosure PTGHN – Adisurya Cipta Lestari, Batulicin Agro Sensiosa	<a href="https://bit.ly/2UIn1cf">bit.ly/2UIn1cf</a>	Jun-18
Unilever	Mill disclosure	<a href="https://bit.ly/2tINqjW">bit.ly/2tINqjW</a>	2018



## Sources for supply chain information (continued):

Supply chain information included in this Rapid Response report is based on the following publicly disclosed sources. Mighty Earth encourages companies to send updated versions of mill disclosures as soon as they become available and any decision to terminate supplies with a given company listed in those mill disclosures; please send to [rapidresponse@mightyearth.org](mailto:rapidresponse@mightyearth.org).

Companies	Source	Link	Date
Wilmar	Mill disclosure WICA Pontianak - Asam Jawa	<a href="https://bit.ly/2Bdi3v9">bit.ly/2Bdi3v9</a>	Jun-18
	Mill disclosure SAP Kumai - Sapta Karya Damai	<a href="https://bit.ly/2PucVgk">bit.ly/2PucVgk</a>	Jun-18
	Mill disclosure WINA Gresik - Sapta Karya Damai	<a href="https://bit.ly/2zQ2f0W">bit.ly/2zQ2f0W</a>	Jun-18
	Mill disclosure MNA Kuala Tanjung - Asam Jawa	<a href="https://bit.ly/2DH0EPg">bit.ly/2DH0EPg</a>	Jun-18
	Mill disclosure WINA Dumai - Asam Jawa	<a href="https://bit.ly/2DjlbbM">bit.ly/2DjlbbM</a>	Jun-18