



# Mighty Earth Rapid Response Report 10

## **Indonesian companies:**

PT Kartika Cipta Pratama, PT Rimbun Sawit Papua, PT Internusa Jaya Sejahtera, PT Sawit Mandiri Lestari, PT Putera Manunggal Perkasa, PT Sebukit Inter Nusa, PT Permata Putera Mandiri (Blok I), PT Pinang Witmas Abadi, PT Persada Era Agro Kencana, PT Sumur Pandanwangi and PT Sumatera Jaya Agro Lestari

**November 2018**

Prepared with support from Aidenvironment and MapHubs

## **Table of contents**

### **Indonesian Companies**

PT Kartika Cipta Pratama	3
PT Rimbun Sawit Papua	6
PT Internusa Jaya Sejahtera	8
PT Sawit Mandiri Lestari	11
PT Putera Manunggal Perkasa	13
PT Permata Putera Mandiri (Blok I)	16
PT Sebukit Inter Nusa	19
PT Pinang Witmas Abadi	21
PT Persada Era Agro Kencana	24
PT Sumur Pandanwangi	27
PT Sumatera Jaya Agro Lestari	30
References	33

## PT Kartika Cipta Pratama

PT Kartika Cipta Pratama is located in Boven Digoel Regency, Papua. The concession covers an area of 40,882 hectares<sup>1</sup>.

(Long 140°12'31.6"E, Lat 6°20'26.6"S)



### Deforestation

Report	Deforestation (ha)	Peat development (ha)	Peat forest development (ha)	Clearance prep/Stacking lines (ha)	Time period
Report 5	322	-	-	-	March 31 – May 31 2018
Report 7	828	-	-	-	May 30 – August 13, 2018
Report 9	781	-	-	-	August 13 – October 8, 2018
Report 10	363	-	-	-	October 8 – November 7, 2018

Satellite imagery (see below) shows that between October 8 and November 7, 2018, a total of 363 hectares of forest were cleared in the PT Kartika Cipta Pratama concession. (Imagery © 2018 Planet Labs Inc.)



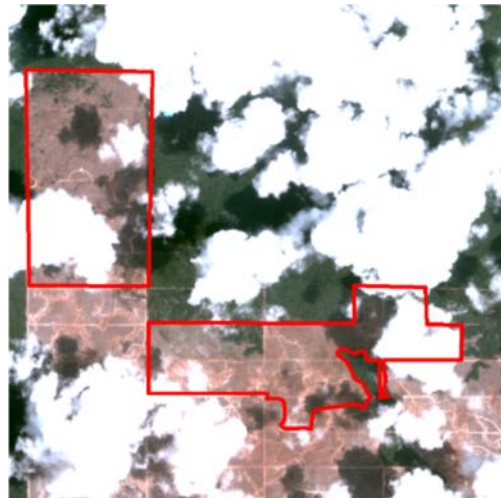
<sup>1</sup> Dinas Perkebunan Kaltim 2016

## Alert Imagery (before and after satellite images)

Date: Oct 8, 2018



Date: Nov 7, 2018



## Ownership Information

### Group: HSA Group

In 2012, four UAE holding companies (Prestige Holding Ltd., Malindo Investments Ltd, Crescent Investments Ltd, and Green Resources Ltd) believed to be affiliated with the Yemen-based HSA Group purchased 80% stake of each of these four companies located in the Boven Digoel district of West Papua, Indonesia: PT Megakarya Jaya Raya, PT Kartika Cipta Pratama, PT Graha Kencana Mulia and PT Energi Samudera Kencana. PT Megakarya Jaya Raya and PT Kartika Cipta Pratama are two concessions involved in Tanah Merah project in Boven Digoel Regency. These concessions cover a combined 155,330 hectares. Since January 2014, around 5,000 hectares of forest have been cleared in PT Megakarya Jaya Raya and PT Kartika Cipta Pratama.

Up until June 5, 2018, the four plantation companies had Fouad Hayel Saeed Anam listed as President Commissioner on their notary acts. Fouad Hayel Saeed is Regional Director-Malaysia of the HSA Group and Managing Director of Pacific Inter-Link, the group's subsidiary. Legal documents also listed Salah Ahmed Hayel Saeed as Commissioner of PT Energi Samudera Kencana & PT Megakarya Jaya Raya and President Director of PT Graha Kencana Mulia & PT Kartika Cipta Pratama. Hayel Saeed is Director of Pacific Inter-Link's refining division, PT Pacific Palmindo Industri. Recent notary acts confirm that on June 5, 2018, Fouad Hayel Saeed ceased to be President Commissioner of PT Megakarya Jaya Raya and PT Kartika Cipta Pratama, and Salah Ahmed Hayel Saeed is no longer Commissioner of PT Megakarya Jaya Raya and President Director of PT Kartika Cipta Pratama. Nakul Rastogi also disappeared from PT Kartika Cipta Pratama's notary acts.

However, June 5, 2018 notary acts does not show any change in PT Megakarya Jaya Raya, PT Kartika Cipta Pratama, PT Graha Kencana Mulia and PT Energi Samudera Kencana shareholders. Hence, it is assumed that these companies remain affiliated with the HSA Group. Little is known about the new directors of the two concessions, except that some notable individuals in Indonesian politics and business are involved. Mr. Alwi Abdurrahman Shihab, former Foreign Minister of the Indonesian government, has become President Commissioner of PT Megakarya Jaya Ray. Drs. Tommy Sagiman is now the commissioner of PT KCP. He is ex-Inspector General of the police. Nata Singh Gurdev Singh became director of PT Megakarya Jaya Raya in June 2018. Until April 2018, he worked for Sime Darby. Alwi Abdurrahman Shihab is the Indonesian President's special envoy to the Middle East and the Organisation of Islamic Cooperation.

The HSA Group is one of the oldest business conglomerate in the Middle East, founded in 1938 by Al Haj Hayel Saeed Anam and his brothers Mohamed, Abdo and Gazern. The Group is today headed by Abdul Gabbar Hayel Saeed, CEO and Chairman. The HSA Group is involved in the palm oil industry through its subsidiaries PT Pacific Palmindo Industri, PT Pacific Medan Industry, PT Pacific Indopalm Industries, Pacific Oil & Fats Industries and Pacific Inter-Link, which are all RSPO members<sup>2</sup>.

Additional evidence shows continued family links to the PT Tulen Jayamas Timber Industries timber complex, a joint-venture project with Bumimas Raya Sdn Bhd, Pacific Inter-Link Sdn Bhd, Yakin Dijaya Sdn Bhd and Al Salam Bank Bahrain<sup>3</sup> announced by Tadmax Resources in 2012.<sup>3</sup> The PT Tulen Jayamas Timber Industries timber complex is situated within the PT Kartika Cipta Pratama concession.

Malindo Investments Ltd which holds 80% shares in PT Kartika Cipta Pratama (see above), also holds 40% of the shares in the Malaysian-based parent company of PT Tulen Jayamas Timber Industries – i.e. Tulen Jayamas Sdn Bhd. Mr. Salah Ahmed Hayel Saeed and Mr. Fouad Hayel Saeed Anam are directors of Tulen Jayamas Sdn Bhd, in addition to their positions in the Indonesian subsidiary (PT Tulen Jayamas Timber Industries) as of 28 April 2018.

## Supply Chain Information

The HSA Group company Pacific Inter-Link (PIL) used to trade with IOI and Nestlé, however both companies have suspended trade with the company due to concerns over its involvement in deforestation. Pacific Inter-Link claims to be one of the largest palm oil traders to the Middle East, Africa, Russia, Ukraine and Turkey.<sup>4</sup>

<sup>2</sup> <https://www.rspo.org/members/617/PT.-Pacific-Palmindo-Industri>,  
<https://www.rspo.org/members/3152/PT.-Pacific-Medan-Industri>,  
<https://www.rspo.org/members/714/pt-pacific-indopalm-industries>,  
<https://www.rspo.org/members/602/Pacific-Oils-Fats-Industries-Sdn-Bhd>,  
<https://www.rspo.org/members/304/pacific-inter-link-sdn-bhd>

<sup>3</sup> See: Bursa Malaysia [bit.ly/2z9WNq4](http://bit.ly/2z9WNq4) and Tadmax Annual Report 2012

[bit.ly/2ON2cbF](http://bit.ly/2ON2cbF)

<sup>4</sup> Pacific Inter-Link corporate brochure



## PT Rimbun Sawit Papua

PT Rimbun Sawit Papua is located in West Papua province. The concession covers an area of 30,596 hectares.<sup>5</sup>

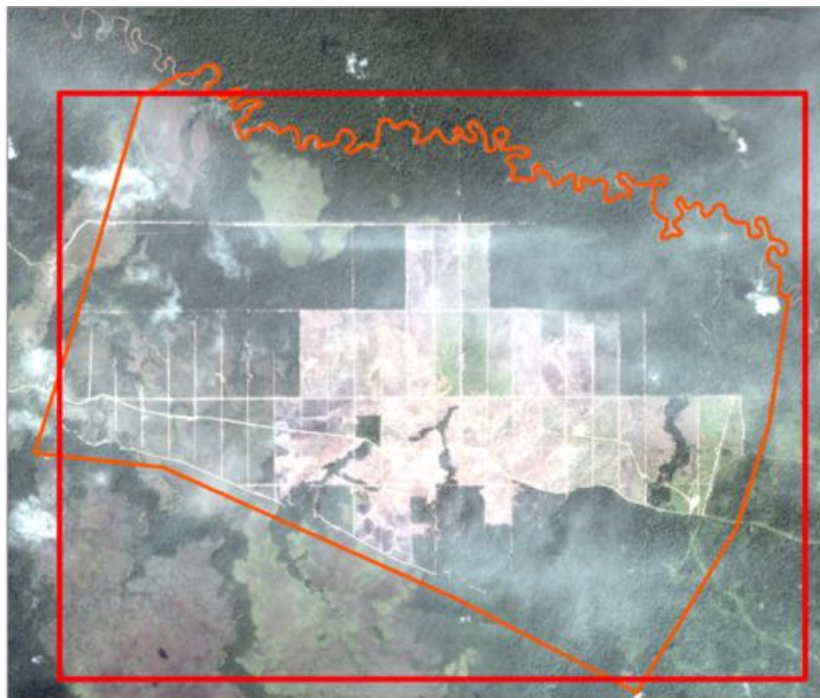
(Long 133° 6'58.80"E, Lat 2°55'32.52"S)



## Deforestation

Report	Deforestation (ha)	Peat development (ha)	Peat forest development (ha)	Clearance prep/Stacking lines (ha)	Time period
Report 3	1,070	-	127	-	May 17 - November 22, 2017
Report 10	1,260	-	263	-	December 22, 2017 – October 28, 2018

Satellite imagery (see below) shows that between December 22, 2017 and October 28, 2018, a total of 1,260 hectares of forest and 263 hectares of peat forest were cleared in the PT Rimbun Sawit Papua concession. (Imagery © 2018 Planet Labs Inc).

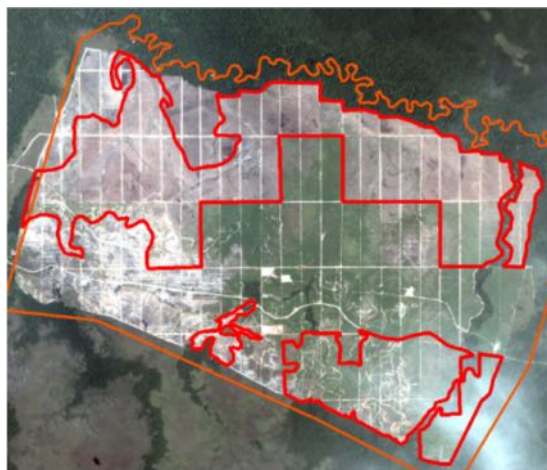


<sup>5</sup> Dinas Perkebunan Papua 2015

Alert Imagery (before and after satellite images)

Date: Dec 22, 2017

Date: Oct 28, 2018



## Ownership Information

### Family: Jeff Setiawan and Ir. Daud

PT Rimbun Sawit Papua is owned by Jeff Setiawan Winata (20%), the Commissioner of PT Rimbun Sawit Papua, PT Sawit Timur Nusantara (50%) and PT Palmandiri Plantation (30%).<sup>6</sup>

PT Sawit Timur Nusantara is owned by Dedi Mulyadi (2.5%) and PT Mulia Abadi Lestari (97.5%), which ultimately owned by Dedi Mulyadi and Junus Sutiono. PT Palmandiri Plantation is ultimately owned by Ir. Daud (99.2%), the President Director of PT Rimbun Sawit Papua.<sup>7</sup>

PT Mulia Abadi Lestari holds 28.6% shares in PT Duta Rendra Mulya<sup>8</sup>, a Salim-owned plantation company.<sup>9</sup>

Identity	Ownership	Position
Mr. Ir. Daud	-	President commissioner
Mr. Jeff Setiawan Winata	20%	Commissioner
Mr. Wiandi Halisantoso	-	President Director
Mr. Rapman Hutabarat	-	Director

## Supply Chain Information

No supply chain information available.

<sup>6</sup>Notary Acts

<sup>7</sup>Notary Acts

<sup>8</sup>Notary Acts

<sup>9</sup>[https://d3n8a8pro7vhmx.cloudfront.net/rainforestactionnet/work/pages/19575/attachments/original/1523418189/Salim\\_Peat\\_Report\\_04102018.pdf?1523418189](https://d3n8a8pro7vhmx.cloudfront.net/rainforestactionnet/work/pages/19575/attachments/original/1523418189/Salim_Peat_Report_04102018.pdf?1523418189)

## PT Internusa Jaya Sejahtera

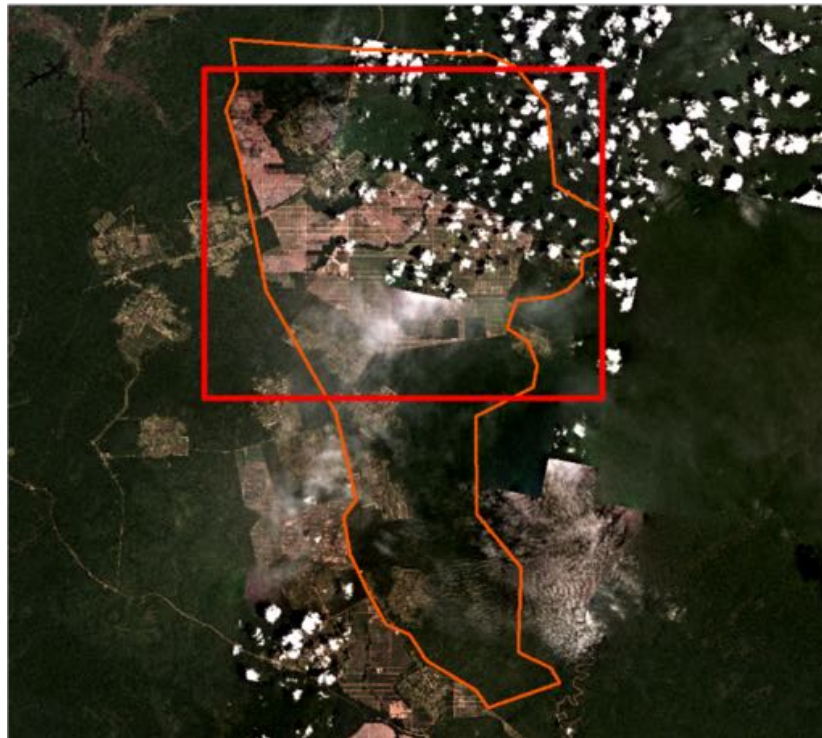
PT Internusa Jaya Sejahtera is located in the province of Papua. The concession covers an area of 25,395 hectares<sup>10</sup>.  
(Long 140°48'22.6"E, Lat 7°19'30.0"S)



### Deforestation

Report	Deforestation (ha)	Peat development (ha)	Peat forest development (ha)	Clearance prep/Stacking lines (ha)	Time period
Report 7	502	-	-	168	March 9 – July 28, 2018
Report 10	517	-	-	-	July 28 – Oct 9, 2018

Satellite imagery (see below) shows that between July 28 and October 9, 2018, a total of 517 hectares of forest were cleared in the PT Internusa Jaya Sejahtera concession. (Imagery © 2017 Planet & Landsat 8 Imagery 2018).



<sup>10</sup>Dinas Perkebunan Papua 2015



Alert Imagery (before and after satellite images)

Date: Jul 28, 2018



Date: Oct 9, 2018



## Ownership Information

### Group: Indonusa Agromulia Group/Indonusa Group

PT Internusa Jaya Sejahtera is part of Indonusa Agromulia Group. Indonusa Agromulia Group is commonly known as Indonusa group. PT Internusa Jaya Sejahtera is owned by Rosna Tjuatja (99.87%). She sits as the Commissioner on the Indonusa Agromulia Group and also serves as President commissioner at PT Profindo International Securities<sup>11</sup>.

Identity	Ownership	Position
Rosna Tjuatja	99.87%	Commissioner

<sup>11</sup> bit.ly/2BR0d4l

## Supply Chain Information

Traders:

Supply chain links:	Apical	Bunge LC	Cargill	Louis Dreyfus	Musim Mas
PT Internusa Jaya Sejahtera					
<b>Indonusa Group</b>	<b>X</b>	<b>X</b>	<b>X</b>	<b>X</b>	<b>X</b>

Consumer Brands:

Supply chain links:	PZ Cussons	Reckitt Benckiser
PT Internusa Jaya Sejahtera		
<b>Indonusa Group</b>	<b>X</b>	<b>X</b>

## PT Sawit Mandiri Lestari

PT Sawit Mandiri Lestari is located in Lamandau Regency, Central Kalimantan. The concession covers an area of 19,635 hectares<sup>12</sup>.  
(Long 111°10'42.9"E, Lat 1°52'57.3"S)



### Deforestation

Report	Deforestation (ha)	Peat development (ha)	Peat forest development (ha)	Clearance prep/Stacking lines (ha)	Time period
Report 3	5,600	-	-	-	March 8, 2016 – December 12, 2017
Report 7	761	-	-	-	May 22 – August 2, 2018 (Area A) and May 22 – August 13, 2018 (Area B)
Report 8	630	-	-	-	August 2 – September 14, 2018 (Areas A & B) and August 13 – September 14, 2018 (Area C)
Report 9	111	-	-	-	September 14 – October 10, 2018
Report 10	160	-	-	-	October 10 – 31, 2018

Satellite imagery (see below) shows that between October 10 and October 31, 2018, a total of 160 hectares of forest were cleared in the PT Sawit Mandiri Lestari concession. (Imagery © 2018 Planet Labs Inc).

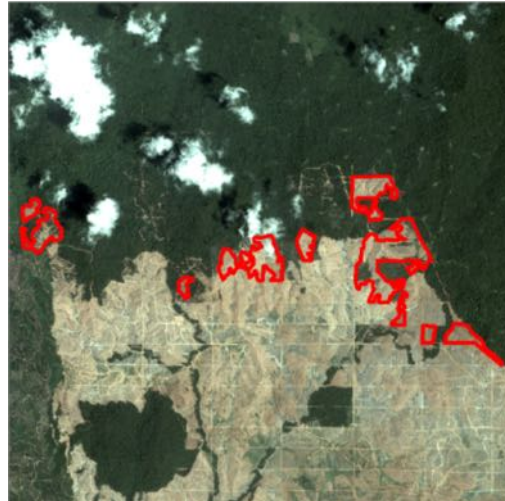
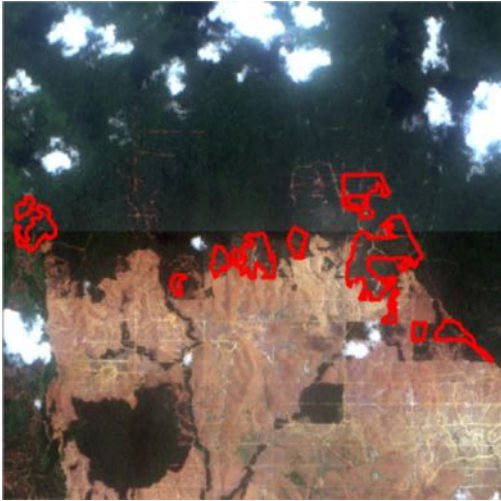


<sup>12</sup> Ijin Usaha Perkebunan Tahun 2014

Alert Imagery (before and after satellite images)

Date: Oct 10, 2018

Date: Oct 31, 2018



## Ownership Information

**Group: PT Metro Lestari Jaya**

Up until December 2015, PT Sawit Mandiri Lestari was a subsidiary of Sawit Sumbermas Sarana (SSMS), part of the Citra Borneo Indah Group. PT Sawit Mandiri Lestari is now owned by Rinawati (60%) and Hamidi Mukhdar Said (40%) through PT Metro Lestari Jaya<sup>13</sup>.

Identity	Ownership	Position
Rinawati	60%	-
Hamidi Mukhdar Said	40%	-
Afrian Fanani	-	Director
Dona Malindo	-	Commissioner

## Supply Chain Information

No supply chain information available.

<sup>13</sup> Rapid Response 9

## PT Putera Manunggal Perkasa

PT Putera Manunggal Perkasa is located in West Papua province. The concession covers an area of 34,310 hectares<sup>14</sup>.

Long 132°21'17.93"E, Lat 1°53'45.09"S)



### Deforestation

Report	Deforestation (ha)	Peat development (ha)	Peat forest development (ha)	Clearance prep/Stacking lines (ha)	Time period
Report 10	107	-	-	-	August 18 – October 29, 2018

Satellite imagery (see below) shows that between August 18 and October 29, 2018, a total of 107 hectares of forest were cleared in the PT Putera Manunggal Perkasa concession. (Imagery © 2018 Sentinel 2 Imagery).

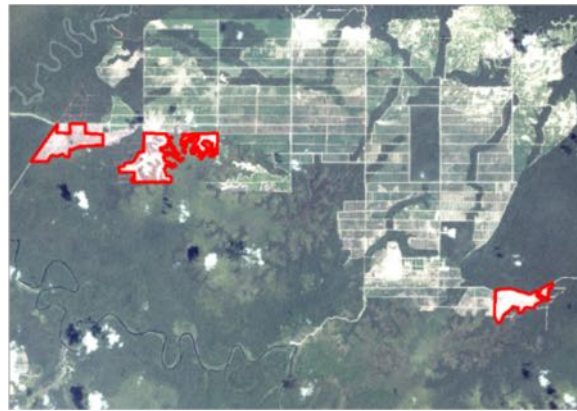
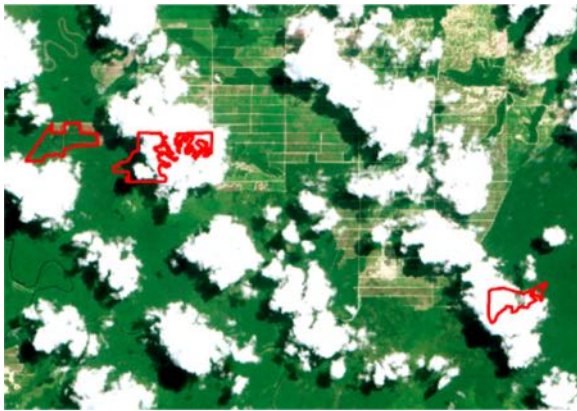


<sup>14</sup> Dinas Perkebunan Papua 2015

Alert Imagery (before and after satellite images)

Date: Aug 18, 2018

Date: Oct 29, 2018



## Ownership Information

### Group: Austindo Nusantara Jaya Tbk (ANJ Group)

PT Putera Manunggal Perkasa is a subsidiary of Austindo Nusantara Jaya Tbk (ANJ Group). Mr. Geetha Govindan is the President Director of Austindo Nusantara Jaya Tbk.<sup>15</sup>

Identity	Ownership	Position
Mr. Geetha Govindan	-	President director
Mr. Sucipto Maridjan	-	Director
Mrs. Nopri Pitoy	-	Director
Mr. Aloysius D'Cruz	-	Director
Mr. Handi Belamande Syarif	-	Director
Mr. Sonny Sunjaya Sukada	-	Director
Mr. George Santosa Tahija	28.99%	President commissioner
Mrs. Istini Tatiek Siddharta	-	Commissioner
Mr. Anastasius Wahyuhadi	-	Commissioner

<sup>15</sup> Annual Report ANJ 2017. [bit.ly/2PLZNCw](http://bit.ly/2PLZNCw)

## Supply Chain Information

Traders:

Supply chain links:	Gokul Agro Resources
PT Putera Manunggal Perkasa	
<b>ANJ Group</b> <sup>16</sup>	<b>x</b>

<sup>16</sup> <https://anj-group.com/en/annual-report>, 2017. Page:250.

## PT Permata Putera Mandiri (Blok I)

PT Permata Putera Mandiri (Blok I) is located in West Papua province. The concession covers an area of 34,310 hectares<sup>17</sup>.

Long 132°21'17.93"E, Lat 1°53'45.09"S)



### Deforestation

Report	Deforestation (ha)	Peat development (ha)	Peat forest development (ha)	Clearance prep/Stacking lines (ha)	Time period
Report 3	668	-	-	-	June – December 2017
Report 4	951	-	-	-	March 11 – May 25, 2018
Report 6	82	-	-	-	May 25 – July 9, 2018
Report 8	114	-	-	-	July 9 – August 18, 2018
Report 10	14	-	-	-	August 18 – November 7, 2018

Satellite imagery (see below) shows that between August 18 and November 7, 2018, a total of 14 hectares of forest were cleared in the PT Permata Putera Mandiri (Blok I) concession. (Imagery © 2018 Planet Labs Inc).

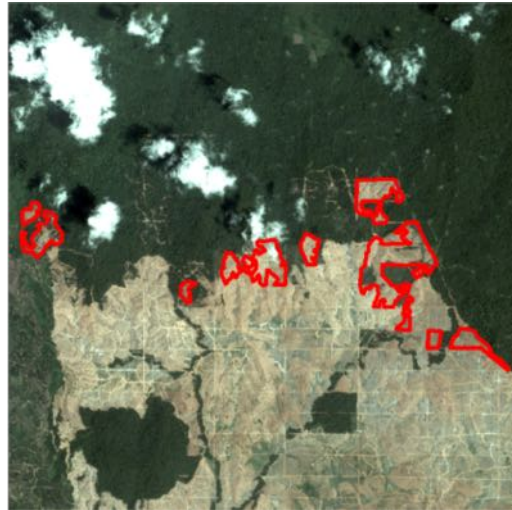




Alert Imagery (before and after satellite images)

Date: Aug 18, 2018

Date: Nov 7, 2018



## Ownership Information

### Group: Austindo Nusantara Jaya Tbk (ANJ Group)

PT Permata Putera Mandiri is owned by PT Austindo Nusantara Jaya Agri, a subsidiary of PT Austindo Nusantara Jaya Tbk (ANJ Group). Mr. Geetha Govindan is President Director of Austindo Nusantara Jaya Tbk.<sup>18</sup>

Identity	Ownership	Position
Mr. Geetha Govindan	-	President director
Mr. Sucipto Maridjan	-	Director
Mrs. Nopri Pitoy	-	Director
Mr. Aloysius D'Cruz	-	Director
Mr. Handi Belamande Syarif	-	Director
Mr. Sonny Sunjaya Sukada	-	Director
Mr. George Santosa Tahija	28.99%	President commissioner
Mrs. Istini Tatiek Siddharta	-	Commissioner
Mr. Anastasius Wahyuhadi	-	Commissioner

<sup>18</sup><https://anj-group.com/en/group-structure>

## Supply Chain Information

Traders:

Supply chain links:	Gokul Agro Resources
PT Permata Putera Mandiri (Blok 1)	
<b>ANJ Group</b> <sup>19</sup>	X

<sup>19</sup> <https://anj-group.com/en/annual-report>, 2017. Page:250.

## PT Sebukit Inter Nusa

PT Sebukit Inter Nusa is located in West Kalimantan Province, Kuburaya district. The concession covers an area of 10,098 hectares<sup>20</sup>. (Long 109° 31' 46" E, Lat 0° 19' 27" S).



### Peat development

Report	Deforestation (ha)	Peat development (ha)	Peat forest development (ha)	Clearance prep/Stacking lines (ha)	Time period
Report 10	-	2,131	-	-	August 13 – October 10, 2018

Satellite imagery (see below) shows that between August 13 and October 10, 2018, a total of 2,131 hectares of peat were developed in the PT Sebukit Inter Nusa concession. (Imagery © 2018 Planet Labs Inc).



<sup>20</sup>Ijin Lokasi Kalimantan Barat 2014

## Alert Imagery (before and after satellite images)

Date: Aug 13, 2018



Date: Oct 10, 2018



## Ownership Information

### Family: Tuan Ted Sioeng / Sioeng Group

PT Sebukit Inter Nusa is owned by Tuan Ted Sioeng / Sioeng Group. Tuan Ted Sioeng – also known as Xiong Delong and Sioeng Wong – is an Indonesian businessman of Chinese descent. He is also owner of the Chinese-language International Daily News. Jessica Gatot Elnitiarta. The Commissioner of PT Sebukit Inter Nusa, is the daughter of Tuan Ted Sioeng.<sup>21</sup>

Identity	Ownership	Position
Tuan Ted Sioeng	98%	-
Nona Jessica Gatot Elnitiarta	2%	Commissioner
Tuan Insinyur Herry Santosa	-	Director

## Supply Chain Information

No supply chain information available.

<sup>21</sup> Notary Acts

## PT Pinang Witmas Abadi

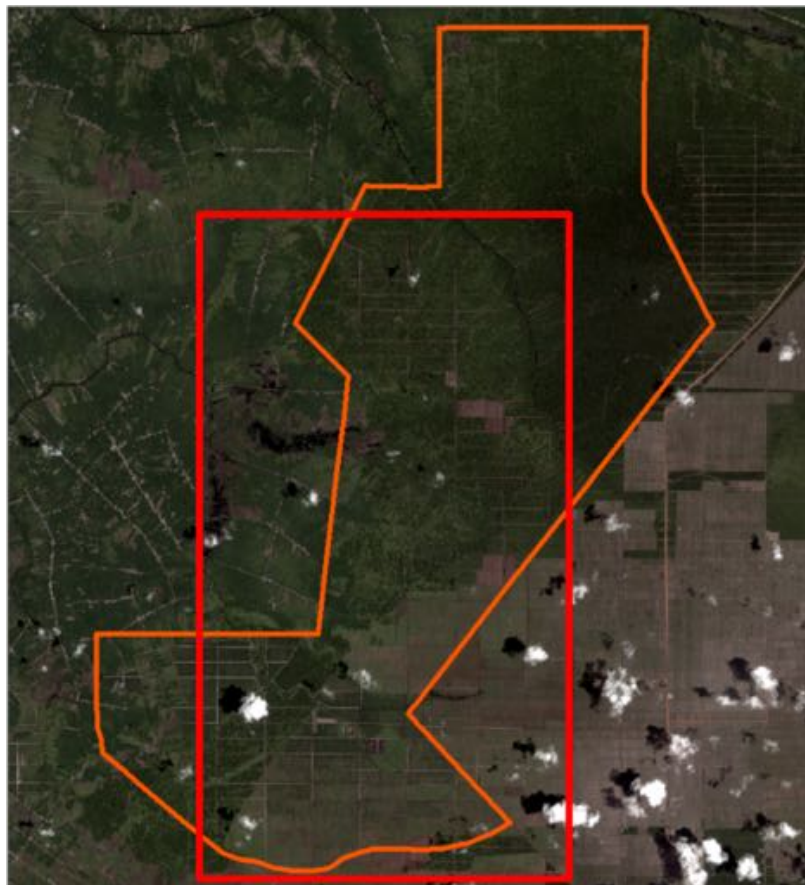
PT Pinang Witmas Abadi is located in West Kalimantan Province, Kuburaya district. The concession covers an area of 10,510 hectares<sup>22</sup>. (Long 109° 37' 06" E, 0° 08' 03" S).



### Deforestation

Report	Deforestation (ha)	Peat development (ha)	Peat forest development (ha)	Clearance prep/Stacking lines (ha)	Time period
Report 10	-	-	168	1,487	July 16 – October 22, 2018

Satellite imagery (see below) shows that between July 16 and October 22, 2018, a total of 168 hectares of peat forest were cleared and 1,487 hectares were prepared with stacking lines in the PT Pinang Witmas Abadi concession. (Imagery © 2018 Planet Labs Inc & Sentinel 2 Imagery).

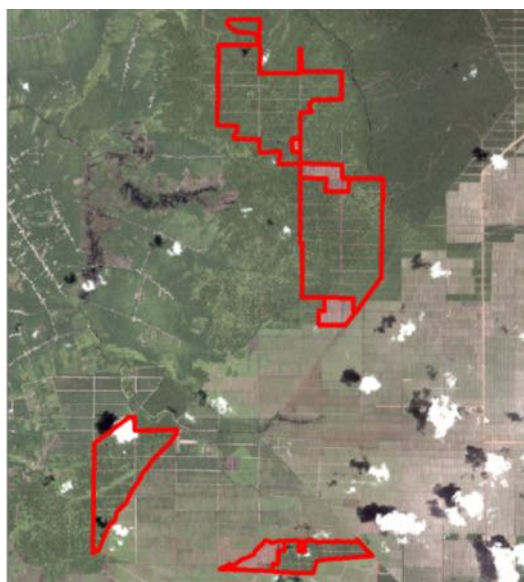
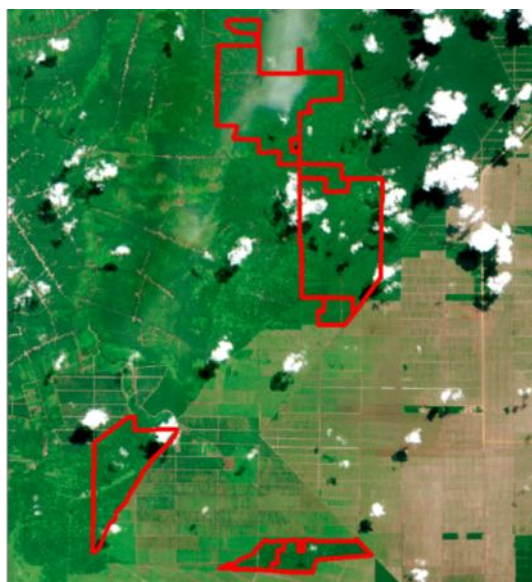


<sup>22</sup> Ijin Lokasi Kalimantan Barat 2014

Alert Imagery (before and after satellite images)

Date: Jul 16, 2018

Date: Oct 22, 2018



## Ownership Information

### Group: Pundi Lahan Khatulistiwa (Pundi group)

PT Pinang Witmas Abadi is owned by PT Pundi Bhakti Khatulistiwa through PT Pundi Lahan Khatulistiwa<sup>23</sup> (Pundi group). Currently, a Director of Pundi Bhakti Khatulistiwa is The Kie Jok, who also serves as the President Director of PT Pundi Lahan Khatulistiwa. Mr. Suryadi Polem is a major shareholder and Commissioner in both PT Pundi Lahan Khatulistiwa and PT Pundi Bhakti Khatulistiwa.

Identity	Ownership	Position
Suryadi Polem	40%	President Commisioner
Iwan Koniman	10%	Commissioner
Herry Utomo	2.5%	President Director
The Kie Hok	10%	Director
Roesman Nilam	10%	-
Haji Soedarso Luslim	5%	-

<sup>23</sup> Notary Acts

## Supply Chain Information

Traders:

Supply chain links:	ADM	Apical	Bunge LC	Fuji Oil	Wilmar
PT Pinang Witmas Abadi					
<b>Pundi Lahan Khatulistiwa</b>	X	X	X	X	X

Consumer Brands:

Supply chain links:	General Mills	Hershey	Mars	Mondelez	Nestlé	PepsiCo	P&G	Unilever
PT Pinang Witmas Abadi								
<b>Pundi Lahan Khatulistiwa</b>	X	X	X	X (via Bunge, IOI)	X (via Bunge)	X	X	X

## PT Persada Era Agro Kencana

PT Persada Era Agro Kencana is located in Central Kalimantan Province, Katingan district. The concession covers an area of 12,933 hectares<sup>24</sup>. (Long 113° 17' 02" E, Lat 2° 34' 09" S).



### Deforestation

Report	Deforestation (ha)	Peat development (ha)	Peat forest development (ha)	Clearance prep/Stacking lines (ha)	Time period
Report 9	-	-	129	-	August 27 – September 25, 2018
Report 10	-	383	-	-	August 27 – October 31, 2018

Satellite imagery (see below) shows that between August 27 and October 31, 2018, a total of 383 hectares of peat were cleared in the PT Persada Era Agro Kencana concession. (Imagery © 2018 Sentinel Imagery).



<sup>24</sup>BPN HGU KESEPAKATAN



## Alert Imagery (before and after satellite images)

Date: Aug 27, 2018



Date: Oct 31, 2018



## Ownership Information

### Group: Mulia Sawit group

PT Persada Era Agro Kencana is a subsidiary of Mulia Sawit group. Mulia Sawit group is owned by Kurnia Lukman Goutama, Tjio Andre Yenatha, Kevin Wusman and Sanjaya Lukman. Tjio Andra Yenatha, known as Andre, also serves as a Director of PT Bangun Jaya Alam Permai of the Best Plantation Group.<sup>25</sup>

Identity	Ownership	Position
Kurnia Lukman Goutama	-	Director
Tjio Andre Yennatha	-	Director
Kevin Wusman	-	Director
Sanjaya Wusman	-	Director

<sup>25</sup> Notary Acts

## Supply Chain Information

Traders:

Supply chain links:	ADM	Bunge LC	Fuji Oil	Musim Mas
PT Persada Era Agro Kencana				
<b>Mulia Sawit group</b>	X	X	X	X

Consumer Brands:

Supply chain links:	General Mills	Mars	Mondelez	Nestlé	PepsiCo	PZ Cussons	Unilever
PT Persada Era Agro Kencana							
<b>Mulia Sawit group</b>	X	X	X (via Apical)	X (via Bunge)	X	X	X

## PT Sumur Pandanwangi

PT Sumur Pandanwangi is located in Seruyan Regency, Central Kalimantan. The concession covers 7,492 hectares.<sup>26</sup>  
(Long: 112°36'52.62"E, Lat: 3°19'29.78"S).



### Peat development

Report	Deforestation (ha)	Peat development (ha)	Peat forest development (ha)	Clearance prep/Stacking lines (ha)	Time period
Report 6	-	243	-	-	April 24 – 23 July, 2018
Report 10	-	528	-	-	August 20 – November 5, 2018

Satellite imagery (see below) shows that between August 20 and November 5, 2018, a total of 528 hectares of peat were developed in the PT Sumur Pandanwangi concession. (Imagery © 2018 Planet Labs Inc).

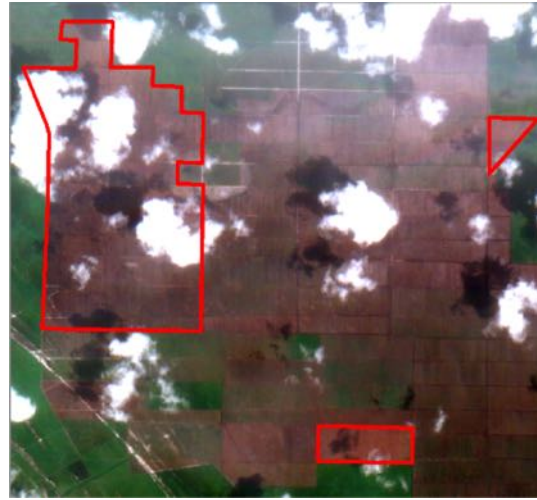


<sup>26</sup>Ijin Lokasi Kalimantan Barat 2014

## Alert Imagery (before and after satellite images)

Date: Aug 20, 2018

Date: Nov 5, 2018



## Ownership Information

### Group: Musirawas

PT Sumur Pandawangi is part of the Musirawas Group, which is still commonly referred to as the Asam Jawa Group. The Musirawas Group owns three plantation companies which operate in the Seruyan and East Kotawaringin districts of Central Kalimantan. Together they hold a total land bank of 34,000 hectares, with roughly 24,000 hectares producing oil palm. Musirawas has four operational palm oil mills.

The founder of oil palm operations is Mr. Widjojo Soejono, who was a General in the Indonesian National Armed Forces (TNI). Each of his five children hold a 20% share in PT Sumur Pandawangi.<sup>27</sup>

Identity	Ownership	Position
Wedhia Purwaningsih	20%	President Commissioner
Hardini Surjaningsih	20%	Commissioner
Enny Lukitaning Diah	20%	President Director
Ariyati Sihwarini Wynn	20%	Director
Budhi Soejono	20%	Director

<sup>27</sup> Rapid Response 6

## Supply Chain Information

Traders:

Supply chain links:	AAK	ADM	Apical	BLC	Cargill	Fuji Oil	GAR	Louis Dreyfus	Musim Mas	Olam	Sime Darby
PT Sumur Pandanwangi											
<b>Musirawas group</b>	X	X	X	X	X	X	X	X	X	X (via Bunge)	X

Consumer Brands:

Supply chain links:	General Mills	Hershey	Mars	Mondelez	Nestlé	PepsiCo	Reckitt Benckiser	Unilever
PT Sumur Pandanwangi								
<b>Musirawas group</b>	X	X	X	X (via AAK, Bunge, Cargill, Wilmar)	X (AAK, ADM, Bunge, Fuji Oil, Wilmar)	X	X	X

## PT Sumatera Jaya Agro Lestari

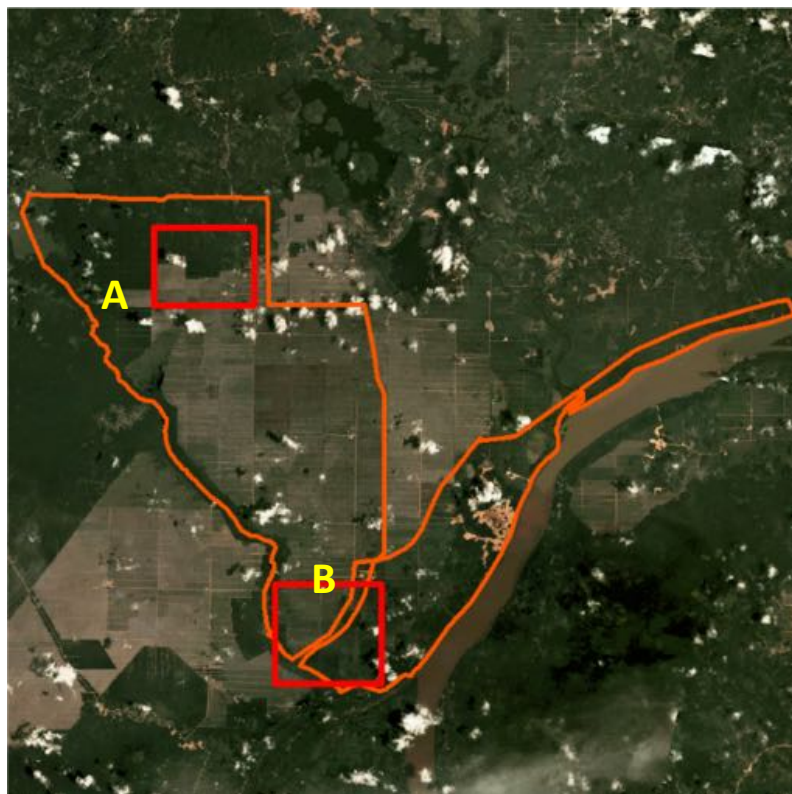
PT Sumatera Jaya Agro Lestari is located in West Kalimantan Province, Sanggau district. The concession covers an area of 37,090 hectares<sup>28</sup>. (Long 113° 17' 02" E, Lat 2° 34' 09" S).



### Deforestation

Report	Deforestation (ha)	Peat development (ha)	Peat forest development (ha)	Clearance prep/Stacking lines (ha)	Time period
Report 10	27	12	61	-	August 12 – October 23, 2018 and September 16 – October 23, 2018

Satellite imagery (see below) shows that between August 12 and October 23, 2018 a total of 27 hectares of forest were cleared and 12 hectares of peat were developed in Area A of the PT Sumatera Jaya Agro Lestari concession. Also between September 16 and October 23, 2018 a total of 61 hectares of peat forest were developed in Area B of the PT Sumatera Jaya Agro Lestari concession. (Imagery © 2018 Planet Labs Inc).



<sup>28</sup> Ijin Lokasi Kalimantan Barat 2014

Alert Imagery (before and after satellite images)

Date: Aug 12, 2018 (Area A)



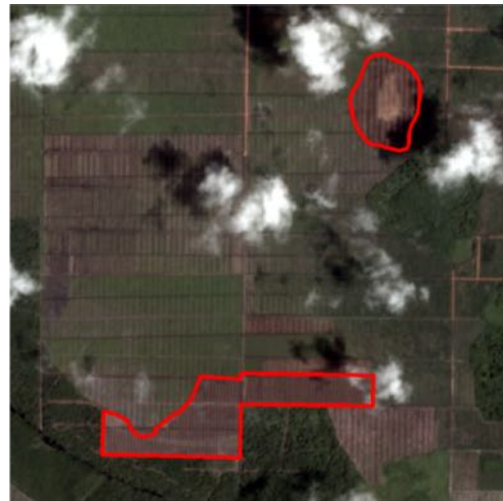
Date: Oct 23, 2018 (Area A)



Date: Sep 16, 2018 (Area B)



Date: Oct 23, 2018 (Area B)



## Ownership Information

### Group: Incasi Raya group

PT Sumatera Jaya Agro Lestari is a subsidiary of Incasi Raya group, which is owned by the Gunawan family. The family has business relations with GAPKINDO (Rubber Association of Indonesia).<sup>29</sup>

Identity	Ownership	Position
Husdi Gunawan	-	President Director
Ridwan Gunawan	-	Director
Sendra Gunawan	-	Director
Sumadi Gunawan	-	President Commissioner
Jullyati Gunawan	-	Commissioner
Erwady Gunawan	-	Commissioner

## Supply Chain Information

Traders:

Supply chain links:	AAK	ADM	Bunge LC	Fuji Oil	IOI	Musim Mas	Olam	Sime Darby	Wilmar
PT Sumatera Jaya Agro Lestari	X	X				X			X
<b>Incasi Raya group</b>	<b>X</b>	<b>X</b>	<b>X</b>	<b>X</b>	<b>X</b>	<b>X</b>	<b>X</b>	<b>X</b>	<b>X</b>

Consumer Brands:

Supply chain links:	General Mills	Hershey	Mars	Mondelez	Nestlé	Pepsi Co	P&G	PZ Cussons	RB	Unilever
PT Sumatera Jaya Agro Lestari	X		X	X (via AAK, Bunge, Wilmar)	X (via AAK, Bunge)	X	X	X	X	
<b>Incasi Raya group</b>	<b>X</b>	<b>X</b>	<b>X</b>	<b>X (via AAK, Bunge, Cargill, IOI, Wilmar)</b>	<b>X (via AAK, ADM, Bunge)</b>	<b>X</b>	<b>X</b>	<b>X</b>	<b>X</b>	<b>X</b>

<sup>29</sup> <https://www.gapkindo.org/>



## Sources for supply chain information:

Supply chain information included in this Rapid Response report is based on the following publicly disclosed sources. Mighty Earth encourages companies to send updated versions of mill disclosures as soon as they become available and any decision to terminate supplies with a given company listed in those mill disclosures; please send to [rapidresponse@mightyearth.org](mailto:rapidresponse@mightyearth.org).

Companies	Source	Link	Date
AAK	Mill disclosure	<a href="http://bit.ly/2uRN6KL">bit.ly/2uRN6KL</a>	May-18
ADM	Mill disclosure	<a href="http://bit.ly/2wuPNlm">bit.ly/2wuPNlm</a>	Jun-18
Apical	Mill disclosure SDS-Hamita Utama Karsa, Pundi Lahan Khatulistiwa, Asam Jawa	<a href="http://bit.ly/2K1QoS1">bit.ly/2K1QoS1</a>	Sep-18
Bunge/Bunge Loders Croklaan	Mill disclosure	<a href="http://bit.ly/2Cp1kHI">bit.ly/2Cp1kHI</a>	Sep-18
Cargill	Mill disclosure	<a href="http://bit.ly/2NZ0N5k">bit.ly/2NZ0N5k</a>	Jun-18
Ferrero	Mill disclosure	<a href="http://bit.ly/2CTUmvh">bit.ly/2CTUmvh</a>	Jun-17
Fuji Oil	Mill disclosure	<a href="http://bit.ly/2AcVtFN">bit.ly/2AcVtFN</a>	Jun-18
GAR	Mill disclosure Lubuk Gaung - Asam Jawa	<a href="http://bit.ly/2DjQ2Xi">bit.ly/2DjQ2Xi</a>	Jun-18
General Mills	Mill disclosure	<a href="http://bit.ly/2PH3G8t">bit.ly/2PH3G8t</a>	
Gokul Agro Resources	Annual report (ANJ)	<a href="http://bit.ly/2ELsZfw">bit.ly/2ELsZfw</a>	2017
Hershey	Mill disclosure	<a href="http://bit.ly/2MRmcsz">bit.ly/2MRmcsz</a>	Dec-17
IOI	Mill disclosure Total IOI Grup Full mill list - Sumatera Makmur Lestari	<a href="http://bit.ly/2PRSTfd">bit.ly/2PRSTfd</a>	Jun-18
Louis Dreyfus	Mill disclosure	<a href="http://bit.ly/2DIDGOf">bit.ly/2DIDGOf</a>	Dec-17
Mars	Mill disclosure	<a href="http://bit.ly/2KBcYDT">bit.ly/2KBcYDT</a>	Feb-18
Mondelez	Mill disclosure	<a href="http://bit.ly/2Oh8voJ">bit.ly/2Oh8voJ</a>	Mar-18
Musim Mas	Mill disclosure	<a href="http://bit.ly/2O3LbNS">bit.ly/2O3LbNS</a>	Sep-18
Nestlé	Mill disclosure	<a href="http://bit.ly/2AbVHgh">bit.ly/2AbVHgh</a>	Feb-18
Olam	Mill disclosure	<a href="http://bit.ly/2OqVsQx">bit.ly/2OqVsQx</a>	Sep-18
Pacific Inter-Link/HSA	Dashboard	<a href="http://bit.ly/2SI5UvT">bit.ly/2SI5UvT</a>	Sep-18
PepsiCo	Mill disclosure	<a href="http://bit.ly/2NLzGad">bit.ly/2NLzGad</a>	2017
P&G	Mill disclosure	<a href="http://bit.ly/2OTRgsH">bit.ly/2OTRgsH</a>	2017
PZ Cussons	Mill disclosure	<a href="http://bit.ly/2OPVcja">bit.ly/2OPVcja</a>	Mar-18
Reckitt Benckiser	Mill disclosure	<a href="http://bit.ly/2LopMyw">bit.ly/2LopMyw</a>	2017
Sime Darby	Mill disclosure SDB H&K - Asam Jawa, Sumatera Makmur Lestari	<a href="http://bit.ly/2z7IEtB">bit.ly/2z7IEtB</a>	Mar-18
Unilever	Mill disclosure	<a href="http://bit.ly/2pswGp9">bit.ly/2pswGp9</a>	2017

## Sources for supply chain information (continued):

Supply chain information included in this Rapid Response report is based on the following publicly disclosed sources. Mighty Earth encourages companies to send updated versions of mill disclosures as soon as they become available and any decision to terminate supplies with a given company listed in those mill disclosures; please send to [rapidresponse@mightyearth.org](mailto:rapidresponse@mightyearth.org).

Companies	Source	Link	Date
Wilmar	Mill disclosure SAP Palembang - Hamita Utama Karsa	<a href="https://bit.ly/2OILqu6">bit.ly/2OILqu6</a>	Jun-18
	Mill disclosure SAP Kumai - Sapta Karya Damai	<a href="https://bit.ly/2PucVgk">bit.ly/2PucVgk</a>	Jun-18
	Mill disclosure WINA Gresik - Sapta Karya Damai	<a href="https://bit.ly/2zQ2f0W">bit.ly/2zQ2f0W</a>	Jun-18
	Mill disclosure MNA Kuala Tanjung - Asam Jawa	<a href="https://bit.ly/2DH0EPg">bit.ly/2DH0EPg</a>	Jun-18
	Mill disclosure WINA Pelintung - Asam Jawa	<a href="https://bit.ly/2DCT7AW">bit.ly/2DCT7AW</a>	Jun-18
	Mill disclosure WINA Dumai - Asam Jawa	<a href="https://bit.ly/2DjlbbM">bit.ly/2DjlbbM</a>	Jun-18
	Mill disclosure WICA Pontianak - Sumatera Jaya Agro Lestari, Sumatera Makmur Lestari	<a href="https://bit.ly/2RTv4Ro">bit.ly/2RTv4Ro</a>	Jun-18
	Mill disclosure IUP Padang - Sumatera Jaya Agro Lestari, Megasawindo Perkasa, Bina Tani Nusantara, Jamika Raya, Selago Makmur Plantation, Sumbar Andalas Kencana	<a href="https://bit.ly/2RStizX">bit.ly/2RStizX</a>	Jun-18